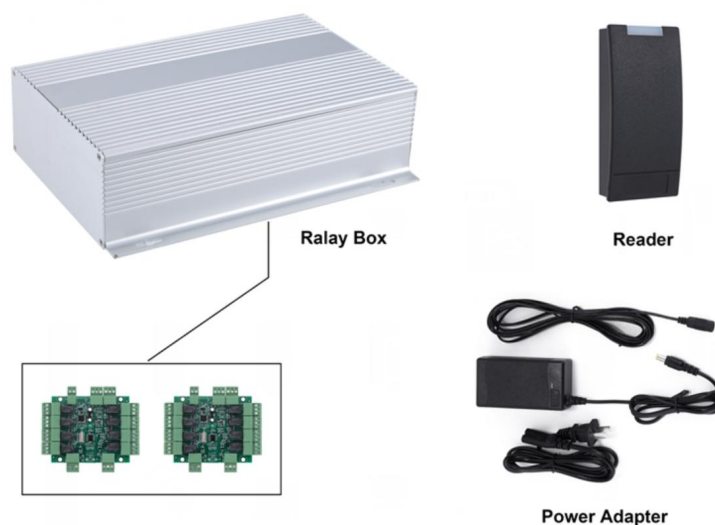

Elevator Control Manual **Instruction**



Content

1. Device Overview	3
2. Parameter	3
3. Working Environment	3
4. Cable Requirements	3
5. Installation of requirement for elevator control	4
6. Installation tools	4
7. Preparations:	5
8. Installation Position of Elevator Controller	5
8.1. Reader installation	5
8.2. Relay board or relay box installation	5
9. Caution Before Installing Elevator Control	6
9.1. Power Setting	6
9.2. Check the integrity of system before installation. (wiring and testing methods are shown below) .	6
9.3. Check If Elevator Control Working Properly	6
9.3.1. Check if Buttons are correctly connected to relays	6
9.3.2. After setting up the Elevator, whether Relays on Control Box Working Properly (Setting Card Test)	6
9.3.3. Whether Relays on Control Board are Functional when using Emergency Card	6
9.3.4. Check Whether Relays on relay Board Working Properly, after Using Control Card	6
9.4. How to Find the Elevator Signal Wires	6
10. Software Setting Manual for elevator Control	7
10.1. Enable elevator function in the software	7
10.2. Setting Procedures	7
10.2.1. Create elevator in software	7
10.2.2. Elevator Configuration card	9
10.2.3. Build Up the Relationship Between elevator and Room Door	9
10.2.3.1. Guest card	9
10.2.3.2. Manager card with elevator function	10
10.2.3.3. Manager card with elevator function	11
10.3. How to use the Guest card, Master card, Manager card, Staff card	11

1. Device Overview



2. Parameter

Working Current	$\leq 1A$
Working Voltage	DC 12V
12V DC Adapter	
Input Voltage	AC 220V 50 HZ
Output Voltage	DC 12V
Output Current	$\leq 3.0A$
Working Voltage	DC 12V

3. Working Environment

Environment class 2: -10 ~ 40C/ 75%RH

4. Cable Requirements

300/500V PVC Insulated Shielded Flexible cable, 6 core 0.3mm copper wire for floor buttons

300/500V PVC Insulated Shielded Flexible cable, 2 core 0.3mm copper wire for emergency switch

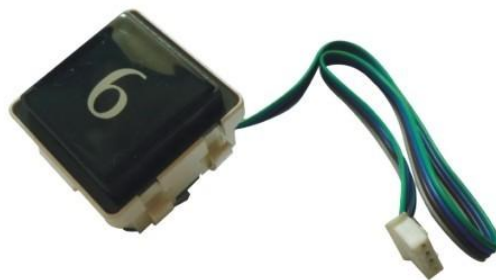
NOTE: On long power cable runs, the cable resistance causes a drop in voltage at the end of the cable

run. Be sure your power supply provides 12 VDC at the end of the cable run.

5. Installation of requirement for elevator control

Check with local authorities when installing Elevator Control panels. Your elevator control application must meet all local and national safety codes. The Main or Lobby Floor cannot have access control applied – all people must be able to exit the elevator at all times on at least one common, ground-level access floor.

It is necessary that the Elevator floor buttons are connected by wires (see the picture as below). Otherwise, you need to contact with the elevator company for more technical support if Luokai elevator can be installed.



Luokai Elevator controller is especially for hotel elevator with purposes of enhancing safety and saving energy for the hotels. It is operated with BIS lock management software to attain the level management and authorization. Only authorized valid cards can access to the elevator up and down, which prevent irrelevant personnel from entering the elevators, and hence protect the hotel safety and extend the service lifetime of elevators.

The elevator controller does not communicate with central controller of elevator itself, so there is no directly mutual control between them. Its function is to control the elevator floor buttons. Therefore, all the existing security features of the elevator itself are not affected.

Note:

If there are two key pads in the elevator car, you need to install two Luokai elevator controllers. It means that how many elevator controllers need to be installed depends on how many key pads inside the elevator car.

6. Installation tools



7. Preparations :

1. Set up a computer before testing the devices.
2. Inform Elevator Company to have staff present during installation
3. The elevator car must be in a position that staff can climb to the roof of the car.
4. Prepare a universal meter, it is needed to test the elevator control system.
5. Electric drills are required to drill holes for the front reader installation. Required drill bits sizes: 4.5mm and 16-20mm.
7. Electrical tape and ribbon

8. Installation Position of Elevator Controller

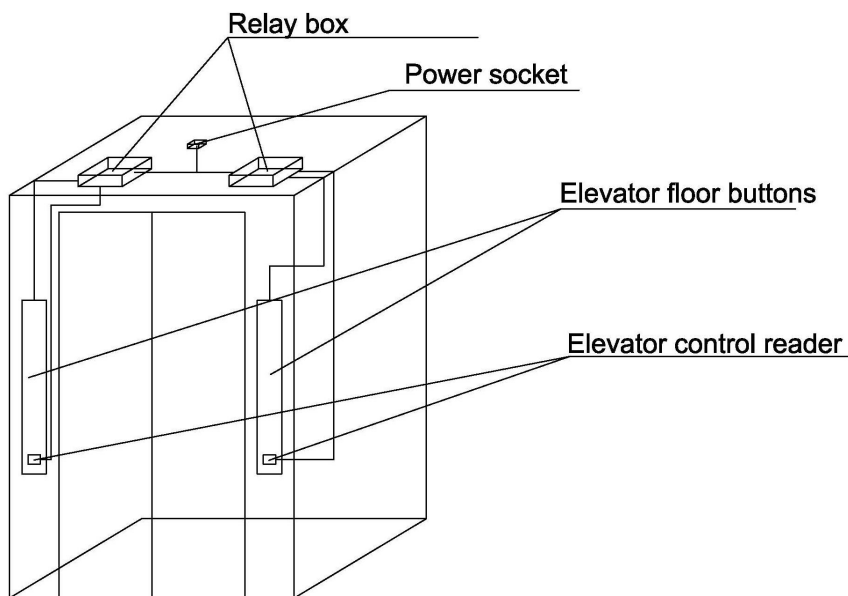
8.1. Reader installation

Default position of the card reader is next to the floor selection button (Details are based on specific requirements of clients and limitations of the environment)

8.2. Relay board or relay box installation

If the environment of the elevator is allowed, you can install the relay attaching to elevator car near to the reader, it will make you easily to maintain when the elevator control stops working.

If there is not enough space to install the relay board, you have to install them with a box on the top of the elevator card.



Note: If there are panels of floor buttons, and you want to control both of them, two elevator controllers are required.

9. Caution Before Installing Elevator Control

9.1. Power Setting

Preset a 220V power outlet on top of the elevator car.

9.2. Check the integrity of system before installation. (wiring and testing methods are shown below)

Before installation, please check if the controller works properly.

9.3. Check If Elevator Control Working Properly

9.3.1. Check if Buttons are correctly connected to relays

If wires are connected correctly, relays are connected when the device is off power, and floors selection buttons are working normally. After disconnect the wires between the floor selection buttons and relays on relay box, the buttons should not respond, otherwise, need to recheck if the connections are correct.

9.3.2. After setting up the Elevator, whether Relays on Control Box Working Properly (Setting Card Test)

After set up elevator with Elevator configuration card, relays on control box will switch from close to open, and buttons can not be used. After setting up the system, if relays are not working and buttons are still functional, please check whether the circuit board has power, and check the +485 and -485 are on the correct port.

9.3.3. Whether Relays on Control Board are Functional when using Emergency Card

After setting card test success, using emergency card, user can access all floors. If successfully used emergency card, but some of the floor can not be access, which indicates some of relays are broken.

9.3.4. Check Whether Relays on relay Board Working Properly, after Using Control Card

Scanning control card onto card reader, yellow indication light shall turn on, and relays on control board shall switch from open to close. Then, buttons on elevator are not under control, and can be operated freely. Scan the control card to the card reader again, green indication light shall turn on with one beep, then elevator is in controlled mode. Under control mode, all buttons are not functional without using elevator enable card.

9.4. How to Find the Elevator Signal Wires

In most cases, staffs from the elevator company will assist Luokai installation staffs to locate the signal wires. However, if the elevator company refuse to assist or for some reasons unable to provide assistance, we will take the following steps:

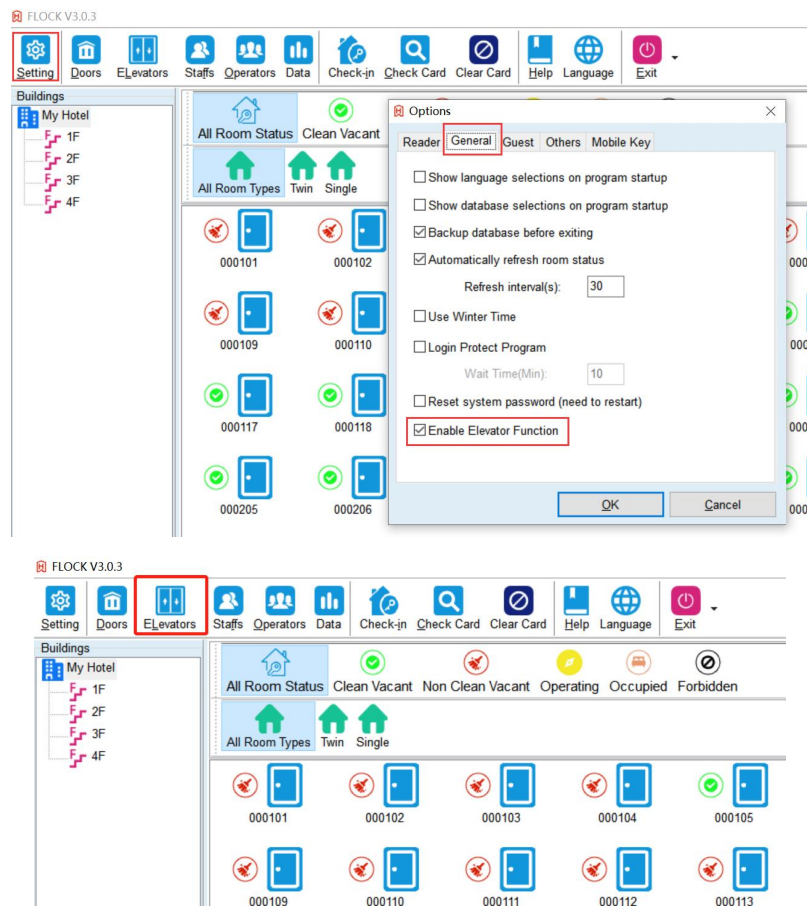
Most elevators have 4 wires for a button, two for the LED light, the other two for signaling. We only need to find out one of the signaling wire.

If we cut a lighting wire, elevator will operate when we press a button, but button light won't turn on

If we cut a signaling wire, when we press a button, button light won't be on and elevator won't operate.

10. Software Setting Manual for elevator Control

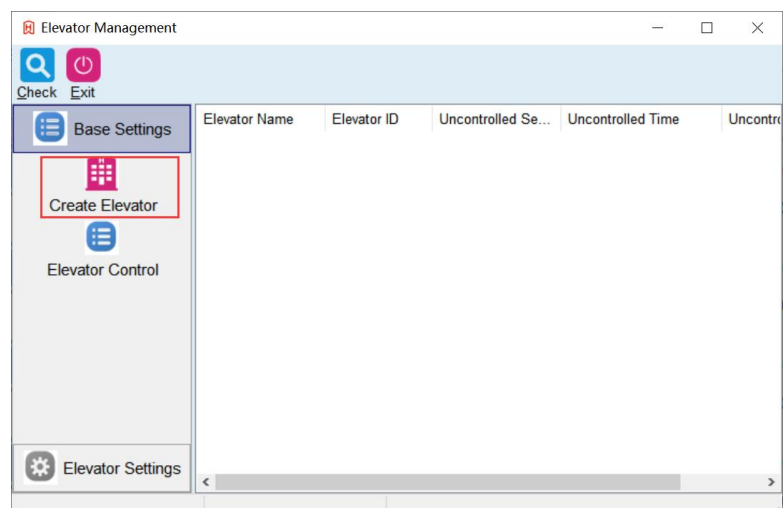
10.1. Enable elevator function in the software



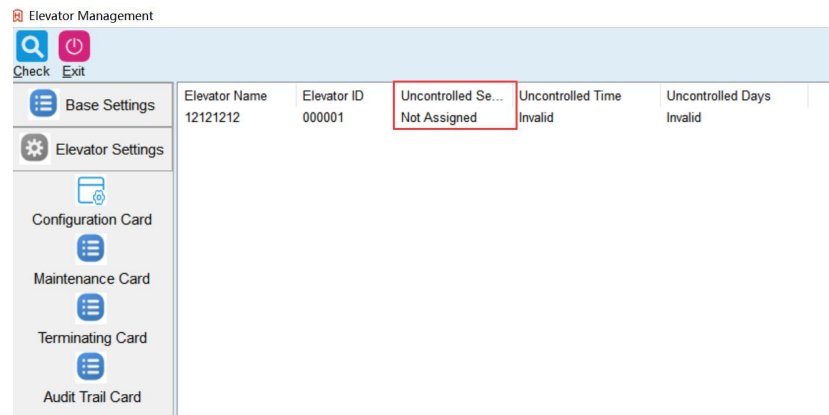
10.2. Setting Procedures

Make sure all the room list information is ready.

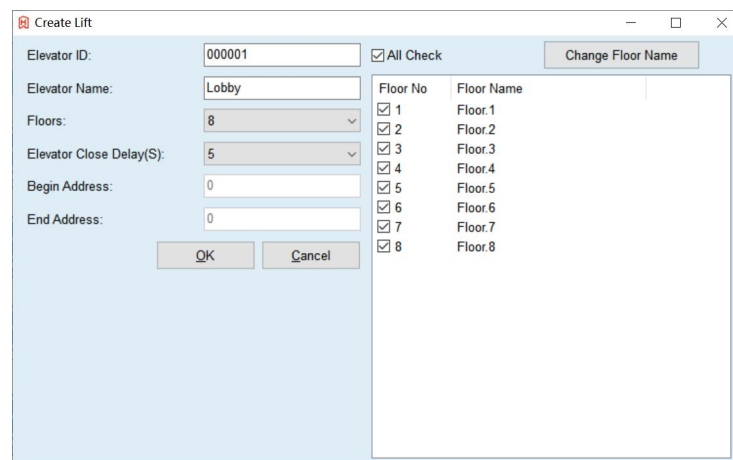
10.2.1. Create elevator in software



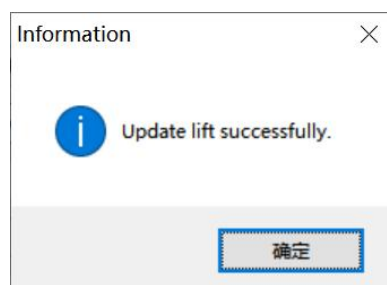
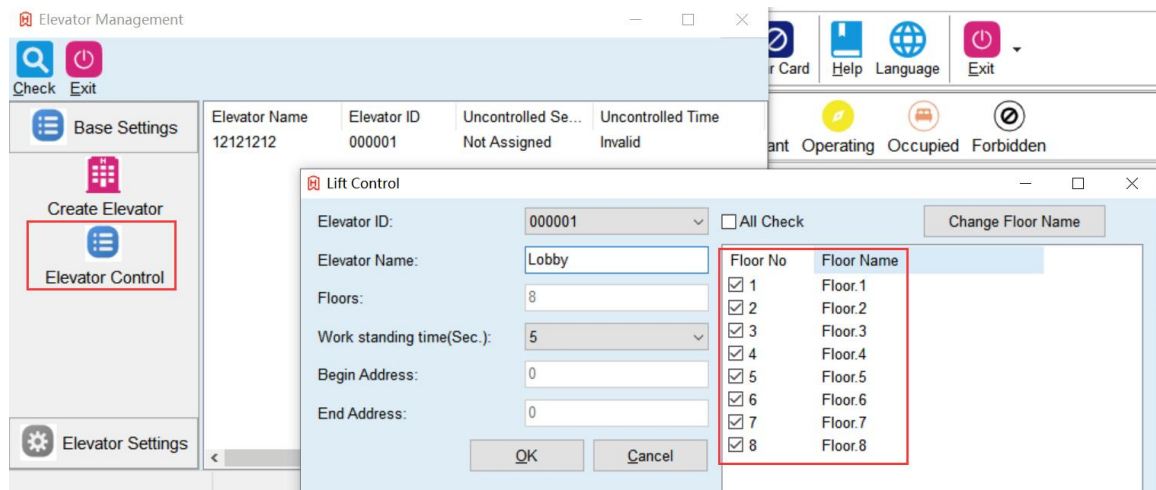
Make sure the uncontrolled section in “ Not Assigned”, right click the list to set the information



Enter Elevator ID and name, set the floor number of the building, close delay, then press “OK”.

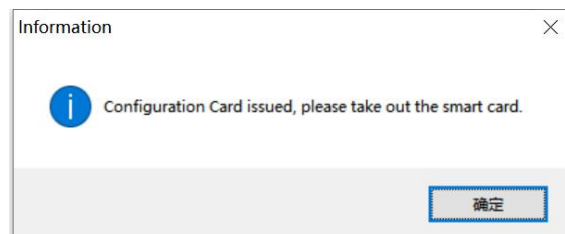
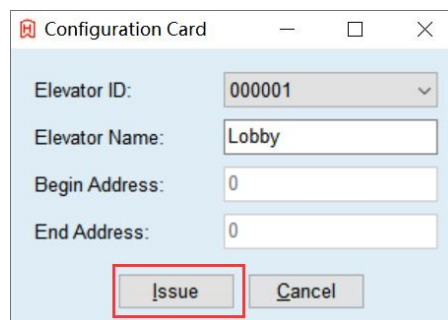
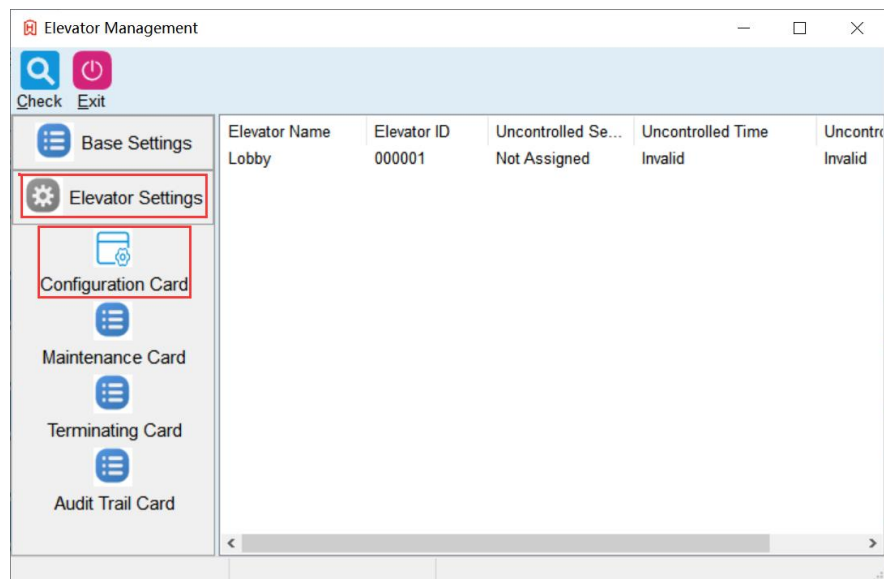


Select the floor that you want to control



10.2.2. Elevator Configuration card

Click “elevator Setting ” , select “Configuration Card”, put the card on the encoder and issue.



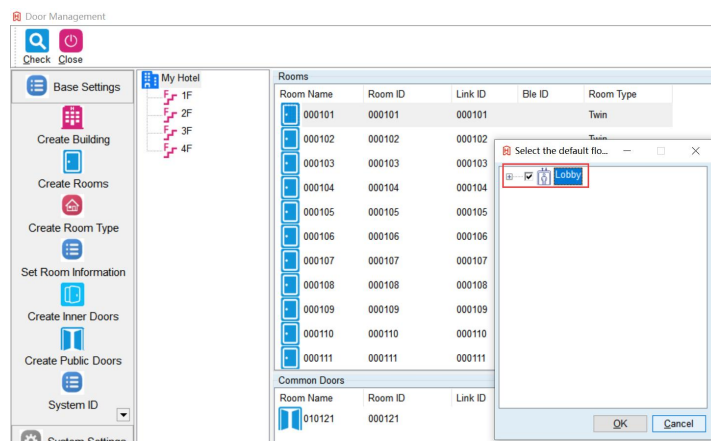
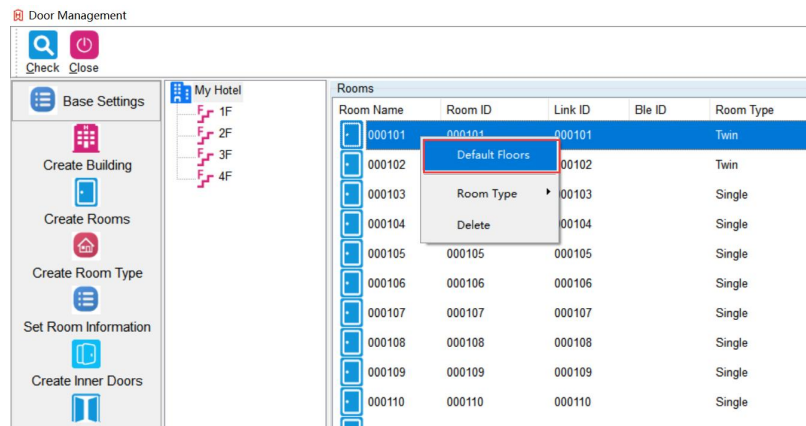
Take the card to the elevator reader, the reader **BLUE** LED light will turn to **RED**, the relays of the relay board will be activated, means the elevator setup is done.

10.2.3. Build Up the Relationship Between elevator and Room Door.

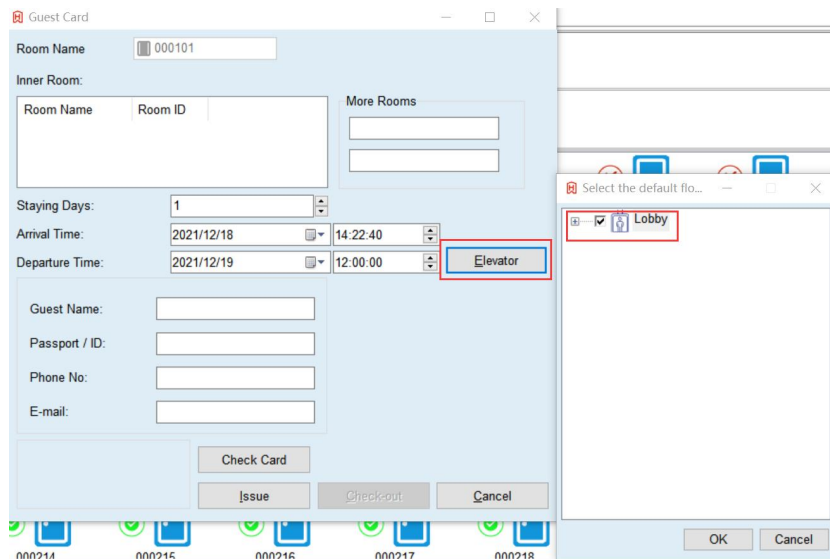
10.2.3.1. Guest card

You can default the floor to each room, so the elevator information will automatically write to the card when the guest check-in.

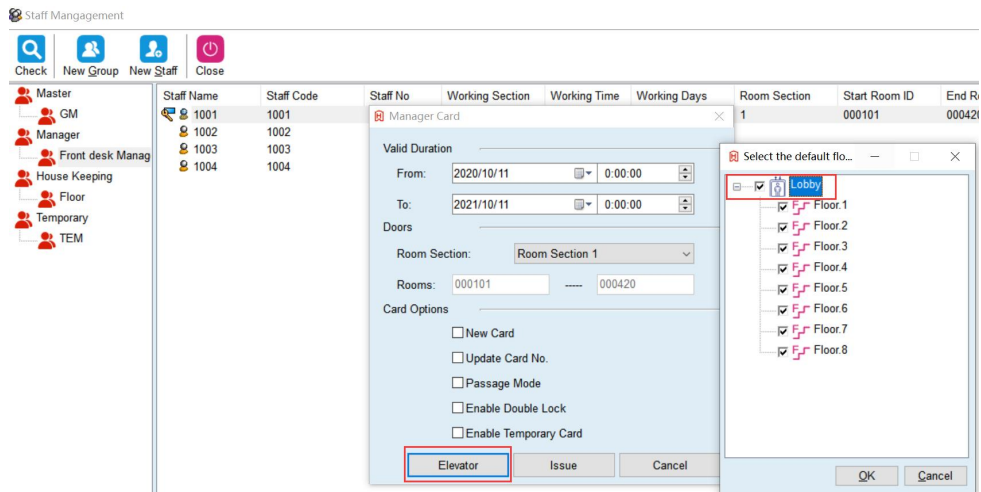
Right click the room number and select “Default Floor”



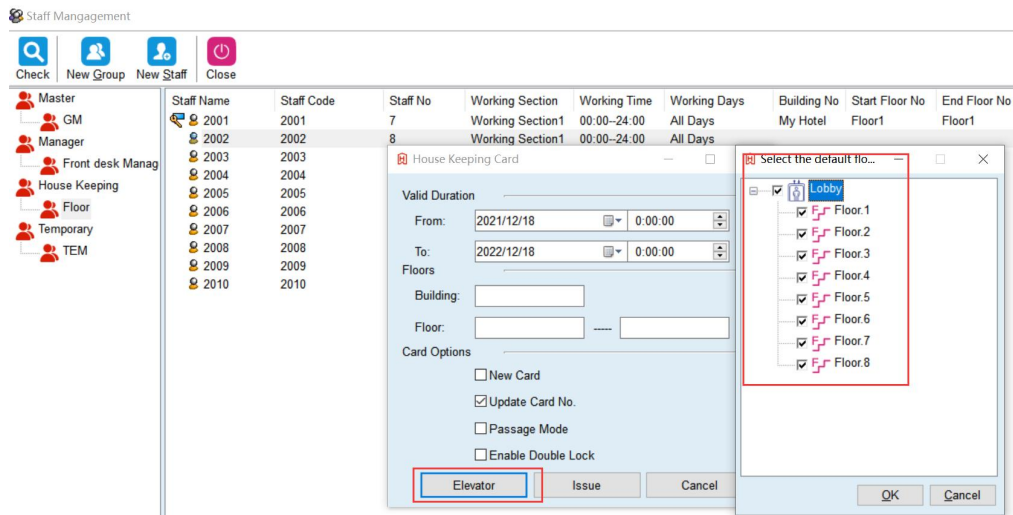
You can issue the Guest card directly after the default floor is set for the room



10.2.3.2. Manager card with elevator function



10.2.3.3. Manager card with elevator function



10.3. How to use the Guest card, Master card, Manager card, Staff card

Tap the card to the elevator reader, the reader Red LED should turn to Blue and flashed 4-5 seconds, press the floor bottom during the 4-5 seconds.