

User Manual For H3XXFMT



IMPORTANT SAFETY INSTRUCTIONS

Please read the following safety instructions to prevent any accident, property damage and inconvenience. Children should be well educated for the operating instruction. Keep this manual in a convenient place so that you can refer to it when necessary.



Caution Must be followed to protect yourself and your property.

Note

Explains product functions and features.



Prohibited



Must observe

1 Specifications

Parts	Specifications	Remarks
Operating temperature	-20 ~ 66° C	
Operating humidity	20 ~ 95%RH	
Handle	Zinc Alloy	
Master code	Set function Unlock/Lock	Only one Master code ID number is 200
User Fingerprint	Unlock/Lock	100 groups ID number are 001~100
User key	Unlock/Lock	50 user keys ID number are 160~210
User code	Unlock/Lock	10 user code ID number are 120~130
Battery	4 AA alkaline batteries	Last up to 12 months (10 times used a day)
Lock case	Stainless Steel	

※Life span of battery may vary depending on temperature, moisture levels, frequency of use and the quality of the batteries.
 ※Please make sure that all parts are included when purchasing the product.
 ※Optional products may not be available depending on your country or local dealer.
 ※Compatible with Mifare S50, Mifare S70 and Mifare S50 key fob.
 ※Two unlock mode
 Normal mode(Default): Any password/fingerprint/card has been set as user/master authority could open the lock individually.
 ※Example: Random digits +User/Master password + Random digits + # (Total 22 digits limited)
 ※Hold for 1 second when you touch the keypad to ensure it light up.

LED indications



Successful Operation



Wrong operation



Power status



Next step

Basic Contents



Front Lock



Back Lock

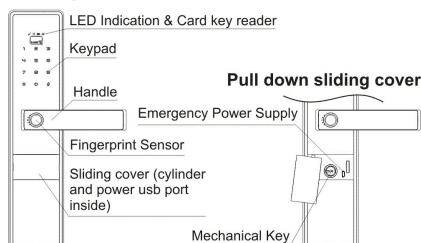


Mortise

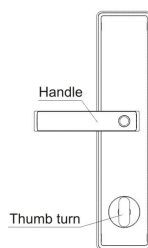
- Emergency keys
- Screws
- Installation Template
- Users Manual

2 Identification of Product

1. Front (Front Body, install on the outside of the door)



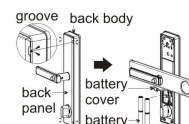
2. Back (Back Body, install on the inside of the door)



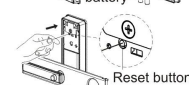
3 How to Use

1. Reset the lock

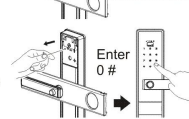
1. Dig out the back panel cover of the back assembly along the groove and rotate it 90 degrees and put batteries.



2. Use a stick to press the reset button.



3. After hearing the long beep then release the reset button, meanwhile keypad will wake up, key-in 0 # followed by three beep. The lock factory setting successfully.



Note

■ The lock will be factory setting (Automatic mode) after resetting.

2. Setting Master Code (After Reset The Lock)

Note

■ Keep the door open while you set Master code to prevent yourself from accidentally getting locked out.

1. Touch the Keypad and Enter Two Random Code.



2. Enter Code (6-12 digits) + #.

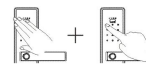


3. Repeat Code + #.

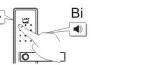


3. Turn exclusive card function on/off

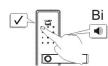
1. Touch the keypad and Enter Two Random Code.



2. Enter * + 93 + #.



3. Enter Master Code + #.



Note

■ When you heard one tone beep, it means turn exclusive card function on. If a two tone beep, turn exclusive card function off. The Turn exclusive Card function factory default on. when the Turn exclusive Card function on, only Be-Tech encryption Card can be used.

4. Register User Code

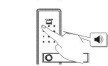
Note

■ You can continue to register when the keypad is bright. It's able to register 10 User Codes, 100 User fingerprints, 50 User Cards.

1. Touch the Keypad and Enter Two Random Code.



2. Enter * + 1 + #.



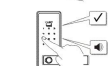
3. Input Master Code + #.



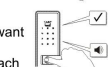
3.1 Register User Code
Enter new User Code + #.



Repeat new User Code + #.



3.2 Register User Fingerprint
Scan a new Fingerprint that you want to register as an User Fingerprint (lift up and put down fingerprint each time when you hear one beep tone)



3.3 Register User Card
Contact a new Card that you want to register as an User Card

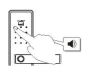


5. Delete all codes, fingerprint and key cards (include User code, fingerprint and code)

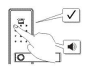
1. Touch the Keypad and Enter Two Random Code.



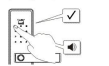
2. Enter * + 2 + #.



3. Input Master Code + #.

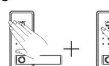


4. Repeat Master Code + #.

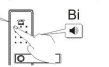


6. Automatic/Manual Lock mode

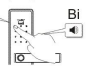
1. Touch the keypad and Enter Two Random Code.



2. Enter * + 91 + #.



3. Enter Master Code + #.



Note

■ When you heard one tone beep, it means set Manual Lock mode successfully. If a two tone beep, set Automatic Lock mode successfully.

7. Locking the door from outside

Under Automatic lock mode

1. Close the door.
2. Pull-up the Handle to enable the double lock.

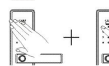


Under Manual lock mode

1. Close the door.



2. Touch the keypad and Enter Two Random Code + #.
OR
Touch the keypad and Scan User Fingerprint.
OR
Touch the keypad and Scan User Key.



3. Pull-up the Handle to enable the double lock.



8. Unlocking the door from the outside (Normal Mode)

Unlocking the door with code

1. Touch the Keypad and Enter Two Random Code.



2. Enter Master/User Code.



3. Confirming the door open.



Unlocking the door with fingerprint

1. Scan User Fingerprint.



2. Confirming the door open.



Unlocking the door with key card

1. Scan User Card.



2. Confirming the door open.

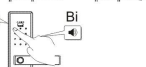


9. Turn safe mode on/off

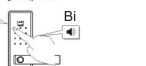
1. Touch the keypad and Enter Two Random Code.



2. Enter * + 92 + #.



3. Enter Master Code + #.



Note

■ When the safe mode on, register function and Delete function will be prevent.

1

2

3

4

5

6

10. Locking the door from the outside

1. Close the door.
2. Pull-up the Handle to enable the double lock.



11. Unlocking the door from the outside

Unlocking the door with code (Normal Mode)

1. Touch the Keypad and Enter Two Random Code.



2. Enter Master/User Code + #.



3. Confirm the door open.



Unlocking the door with fingerprint (Normal Mode)

1. Scan User Fingerprint.



2. Confirm the door open.



Unlocking the door with two different User code (Safe Mode)

1. Touch the Keypad and Enter Two Random Code.



2. Enter User Code + #.



3. Enter second User Code + #.



4. Confirm the door open.



7

13. All modes revert to the default state

1. Touch the keypad and Enter Two Random Code.



2. Enter * + 9 + #.



3. Enter Master Code + #.



Note

- When you heard one tone beep, it means all modes revert to the default state successfully.

14. Turn sound off/on

1. Touch the keypad and enter Two Random Code.



2. Enter * + 90 + #.



3. Enter Master Code + #.



Note

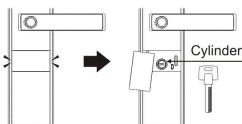
- When you heard one tone beep, it means turn sound off. If a two tone beep, turn sound on.

4 Cautions

1. Emergency mechanical key override

When it happen to the situation that all password/fingerprint/card cannot open the lock, please pull down the sliding cover and use mechanical key.

- At least 1 mechanical key should be well stored out of the house.



10

Unlocking the door with two different User card (Safe Mode)

1. Scan User card.



2. Scan second User card.



3. Confirm the door open.



Unlocking the door with two different User fingerprint (Safe Mode)

1. Scan User Fingerprint.



2. Scan second User Fingerprint.



3. Confirm the door open.



Unlocking the door with one User password and one User fingerprint (Safe Mode)

1. Touch the Keypad and Enter Two Random Code.



2. Enter User Code + #.



3. Scan User Fingerprint.



4. Confirm the door open.



8

Unlocking the door with one User password and one User card (Safe Mode)

1. Touch the Keypad and Enter Two Random Code.



2. Enter User password + #.



3. Scan User Card.



4. Confirm the door open.



Unlocking the door with one User fingerprint and one User card (Safe Mode)

1. Scan User fingerprint.



2. Scan User card.



3. Confirm the door open.



12. Changing Master code

1. Touch the keypad and Enter Two Random Code.



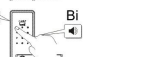
2. Enter * + 01 + #.



3. Enter Old Master Code (6-12 digits) + #.



4. Enter New Master Code (6-12 digits) + #.



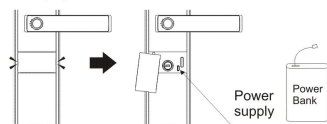
5. Repeat New Master Code (6-12 digits) + #.



9

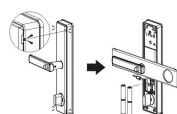
2. Emergency power supply

In case of power extremity, please pull down the sliding cover and connect the power bank to power supply port then unlock with code/fingerprint/card.



3. Battery use & Replacement.

This product uses 4 1.5V alkaline AA batteries which can be used approximately one year on the condition of 10 times open/close cycles per day.



Battery replacement warning

Replace all 4 battery waring sound rings and red LED light under unlock the lock.



Extremely low voltage

The red Led light will flash once in every 5s which is indicating extremely low voltage. It will be resumed after changing new battery and unlock.

8 beeps



The low voltage alarm 8 beeps when open the lock.



Do not mix new and used batteries.



Caution

- Always check "+" and "-" directions when inserting batteries.
- Use the authentic alkaline batteries. It is an user's responsibility for damage caused by using unauthentic batteries.
- Risk of explosion if battery is replaced by an incorrect type.
- Dispose of used batteries according to the instructions.

4. Wrong-try alarm and lock-out

When using incorrect password/fingerprint/card or verification failed for 5 times in a row, we still have 5 times to do open lock operation (if fail again with short-alarm each time). If this 5 time are also fail then the lock will lock-out all operation for 3 minutes and show 5 when you touch the keypad.

5. Latch alarm

When the door is not completely closed, the lock will continuously make short beep for reminding.

6. Anti pry alarm

If someone force apart the front panel from door, it will activate the alarm for 5 minutes. (Alarm is able to be canceled by User/Master)

7. Security bolt Function

Turn the knob and engage the Security bolt, then the door is locked from inside. In this situation, only Master authority could unlock. (Please note if children use this feature)

Trouble shooting

Please refer to below trouble shooting when you have trouble with the lock. If the problem still can't be solved, please turn to the local distributor.

Problem	solution
No response	Please check if the lock has batteries installed. Assure batteries have power and the "+" "-" direction is correct.
Cannot add fingerprint	Scan the fingerprint while keypad is bright. If keypad's LED is off then cannot scan fingerprint.
Cannot add code	Input password while keypad is bright. Please refer to Set User password, fingerprint and card instruction.
Cannot open with fingerprint	Make sure fingerprint had been added and hasn't been deleted. Make sure the fingerprint is clean and a bit moisture or cleaning the fingerprint then try.
Cannot open with code	Input password while keypad is bright. Input the next digit within 14 seconds after the last digit. Make sure the password is correct. If using scramble password function please make sure the total digit is include a complete password.
Neither password, fingerprint or card cannot open	If the door is locked from inside, then we need someone inside to open the lock.
Making beep warning while opening.	Need to change batteries
Fingerprint has been added and used for times but cannot open	Reset the lock

Note

- The actual function of the door lock changes due to the version, or slightly different from this manual, our company reserves the right of final interpretation.

12