



## Specification Sheet

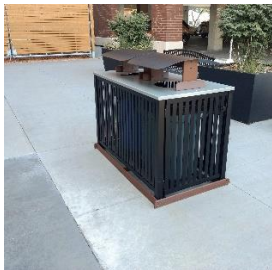
### Classic 32 Aluminum Single Stream Waste Receptacle

Part Number: 50101



# Features

## Elegant Design Style



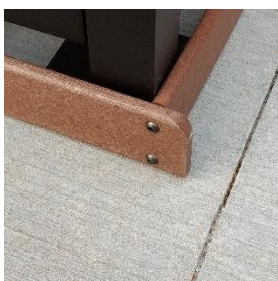
Dramatically improves site appearance resulting in positive customer perceptions.

## Lockable Door Latch



Securely controls access using a simple padlock when that function is required.

## Ground Finishing Bezel



Attractively finishes off the installation by sitting flush with uneven ground surfaces independently of the leveled base unit.

## Side Entry



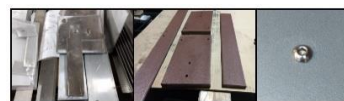
Easy and ergonomic emptying. Eliminates difficult high vertical lifting of heavy loads reducing potential workers comp issues.

## Rain/Snow Hood



Effectively keeps rain water and snow out of the liner while minimizing the visibility of contained waste.

## Corrosion Resistant Materials



No product rusting or placement surface rust stains. Aluminum, stainless steel, and recycled plastic lumber materials of construction offer superior product value.

## BRUTE Liner



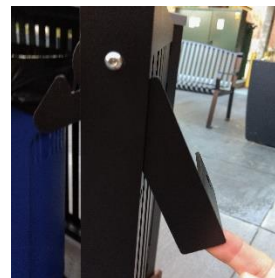
Significantly improves liner function and use. Purpose built liner is loaded with ergonomic and bag retention features.

## Laser Cut Stream Identification

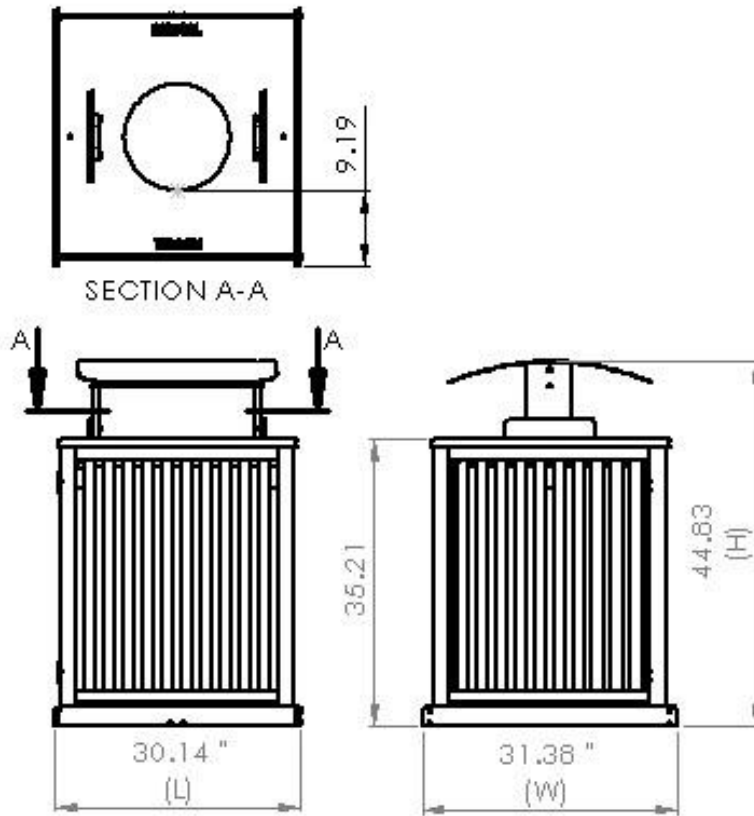


Durable and permanent for lasting product value.

## Integrated Door Latch



Neatly closes flush with the door blending into the overall product design.



**Materials of Construction:** Powder coated aluminum, recycled plastic lumber, and stainless-steel hardware.

**Capacity:** 32 Gallons

**Application:** Outdoor or Indoor

**Liner:** Rubbermaid Commercial Products BRUTE 32

**Dimensions:** L 30.14" X W 31.38" X H 44.83"

**Weight:** 116 Pounds

**Opening Type:** Drop-In Top

**Empty Access:** Side Entry

**Lid Type:** Rolled Cover

SHIPPING DATA				
Total Weight (Pounds)	Length (Inches)	Width (Inches)	Height (Inches)	Volume ( Cubic Feet)
165	48	42	51	59



Designed, Manufactured, Assembled, and Packaged in the USA.



ADA 2010 Standards: Titles II and III 308.3.1 Unobstructed Side Reach.