

# Cleanslate Operations Report

Prepared for: Far South Community Development Corporation - SSA 45  
 Prepared On: 12/07/2021  
 Reporting Period: 11/3/2021-11/27/2021

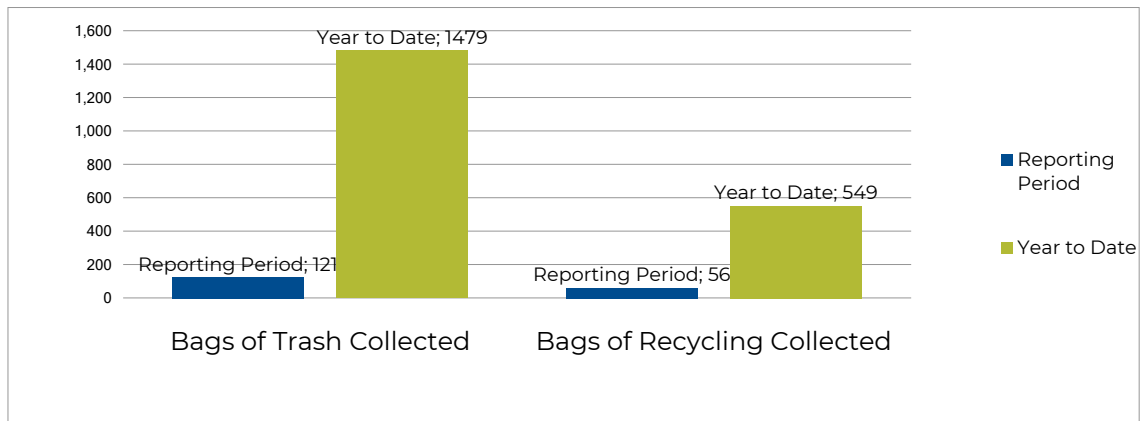


Litter Abatement and Recycling – Snow Removal  
 Landscaping – Pressure Washing – Graffiti Removal

## MISSION STATEMENT

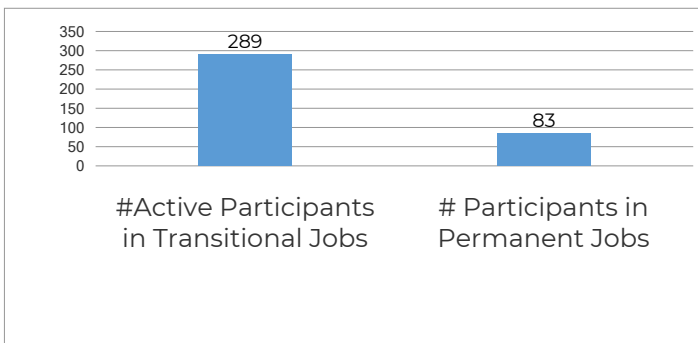
Cleanslate, a social enterprise of Cara, provides paid transitional jobs in exterior maintenance which have a dual purpose - invigorating our communities and providing the platform to help individuals build the skills to secure lasting careers. For more information, please visit [www.cleanslatechicago.org](http://www.cleanslatechicago.org)

## LITTER ABATEMENT



<b>49</b>	<b>102</b>	<b>0</b>	<b>0</b>	<b>0</b>	<b>0</b>
Receptacles Serviced	Signs Removed	Graffiti Tags Removed	Graffiti Reported <small>Please see reverse for details</small>	Crosswalks Cleared	Bus Stops Cleared

## PARTICIPANT JOB PLACEMENTS, YEAR TO DATE



## TOTAL COMMUNITY REINVESTMENT

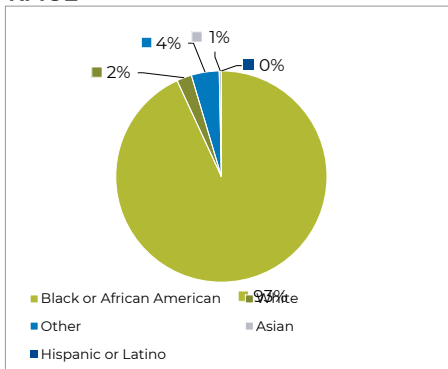
**\$2,607,412**

Includes real earnings for Cleanslate interns in Fiscal Year 2020 and real earnings for Cleanslate interns who were also placed into permanent, quality employment in Fiscal Year 2020.

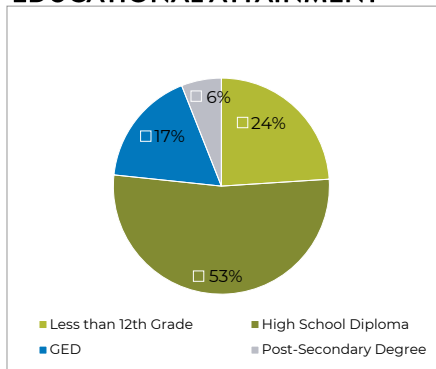
Transitional and permanent jobs noted include activity from all of Cleanslate's contracts; they are not unique to this contract.

## PARTICIPANT DEMOGRAPHICS, YEAR TO DATE

### RACE



### EDUCATIONAL ATTAINMENT



72%

of Cleanslate participants who found permanent jobs stayed employed for at least a year in Fiscal Year 2020!

Cleanslate participants who find permanent jobs currently earn an average hourly wage of...



\$16.21

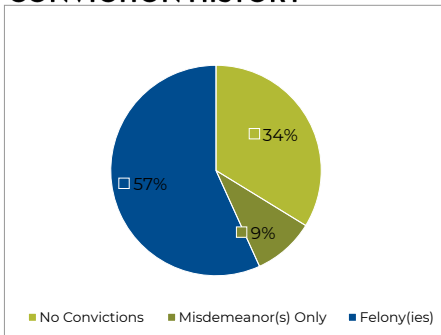
Cleanslate participants who find permanent jobs work...



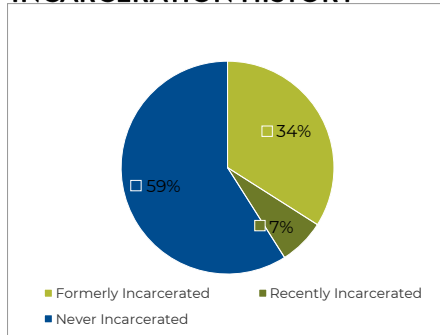
39

hours per week, on average.

### CONVICTION HISTORY



### INCARCERATION HISTORY



## GRAFFITI DETAIL, YEAR TO DATE

Date Reported	# of Tags Reported	Graffiti Reference Numbers

## CONTACT CLEANSLATE

### MAILING ADDRESS

1540 S. Ashland  
Suite 105  
Chicago, IL 60608

### REFER SOMEONE TO OUR PROGRAM

P: 312-226-6361  
E: [contact@cleanslatechicago.org](mailto:contact@cleanslatechicago.org)  
W: [cleanslatechicago.org](http://cleanslatechicago.org)

### LEARN MORE

Cara: [carachicago.org](http://carachicago.org)  
Cara Connects: [caraconnects.com](http://caraconnects.com)

f /CleanslateChicago  
in /CleanslateChicago  
@CleanslateChicago

Property Name: FAR SOUTH  
Inspection Date: 11/03/2021

COMMENTS/NOTES:



99<sup>TH</sup> / HALSTED NB EXIT RAMP BEFORE



99<sup>TH</sup> / HALSTED NB EXIT RAMP AFTER



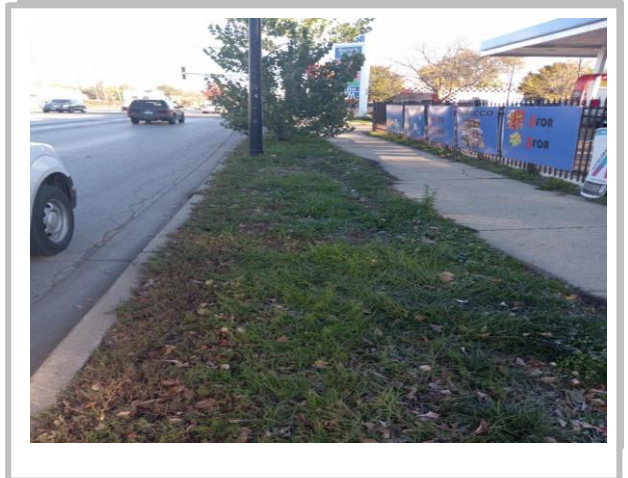
99<sup>TH</sup> / HALSTED SB ENTRANCE RAMP BEFORE



99<sup>TH</sup> / HALSTED SB ENTRANCE RAMP AFTER



115<sup>TH</sup> / HALSTED BEFORE

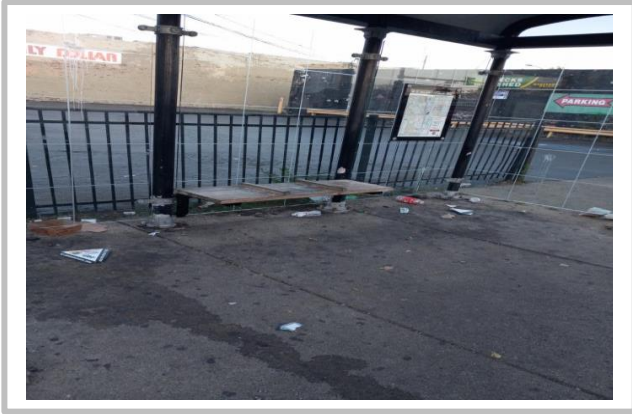


115<sup>TH</sup> / HALSTED AFTER

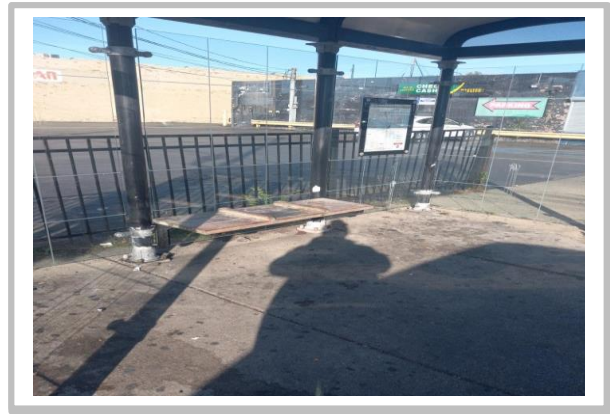


Property Name: FAR SOUTH  
Inspection Date: 11/06/21

COMMENTS/NOTES:



108<sup>TH</sup> / HALSTED BEFORE



108<sup>TH</sup> / HALSTED AFTER



115<sup>TH</sup> / HALSTED BEFORE



115<sup>TH</sup> / HALSTED AFTER



103<sup>RD</sup> / HALSTED BEFORE

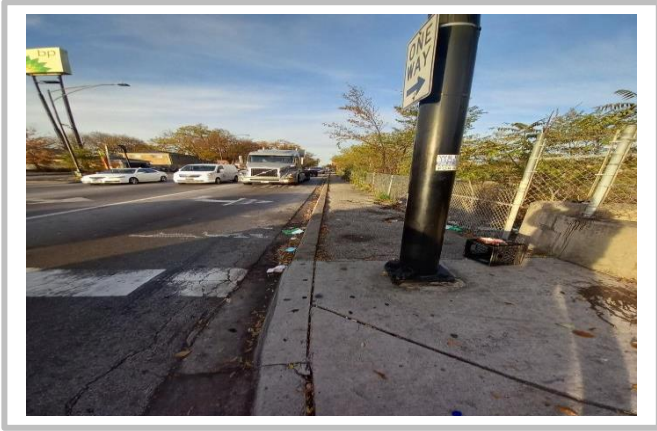


103<sup>RD</sup> / HALSTED AFTER



Property Name: FAR SOUTH  
Inspection Date: 11/10/2021

COMMENTS/NOTES:



99<sup>TH</sup> / HALSTED NB EXIT RAMP BEFORE



99<sup>TH</sup> / HALSTED NB EXIT RAMP AFTER



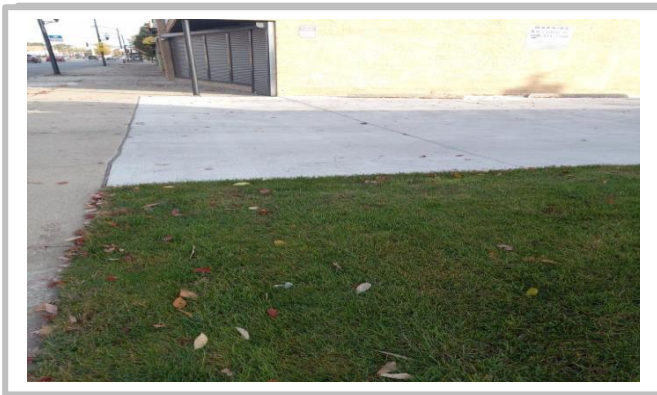
99<sup>TH</sup> / HALSTED SB ENTRANCE RAMP BEFORE



99<sup>TH</sup> / HALSTED SB ENTRANCE RAMP AFTER



111<sup>TH</sup> / HALSTED BEFORE



111<sup>TH</sup> / HALSTED AFTER



Property Name: FAR SOUTH  
Inspection Date: 11/13-20/2021

COMMENTS/NOTES:



115<sup>TH</sup> / HALSTED BEFORE



115<sup>TH</sup> / HALSTED AFTER



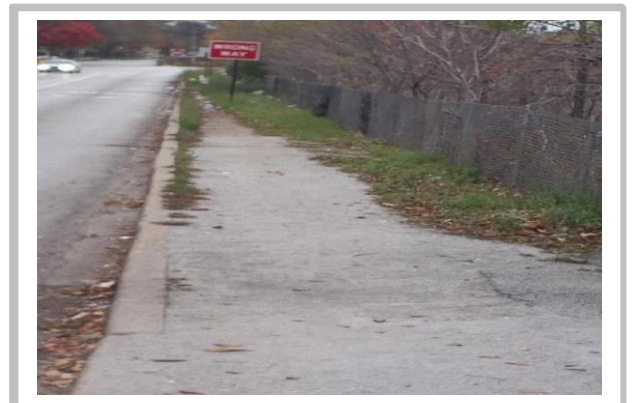
99<sup>TH</sup> / HALSTED SB ENTRANCE RAMP BEFORE



99<sup>TH</sup> / HALSTED SB ENTRANCE RAMP AFTER



99<sup>TH</sup> / HALSTED SB EXIT RAMP BEFORE



99<sup>TH</sup> / HALSTED SB EXIT RAMP AFTER



Property Name: FAR SOUTH  
Inspection Date: 11/24 - 27/2021

COMMENTS/NOTES:



99<sup>TH</sup> / HALSTED SB ENTRANCE RAMP BEFORE



99<sup>TH</sup> / HALSTED SB ENTRANCE RAMP AFTER



99<sup>TH</sup> / HALSTED SB EXIT RAMP BEFORE



99<sup>TH</sup> / HALSTED SB EXIT RAMP AFTER



115<sup>TH</sup> / HALSTED BEFORE



115<sup>TH</sup> / HALSTED AFTER