

# Cleanslate Operations Report

Prepared for: Far South Community Development Corporation - SSA 45  
Prepared On: 11/10/2021  
Reporting Period: 10/2/2021-10/30/2021

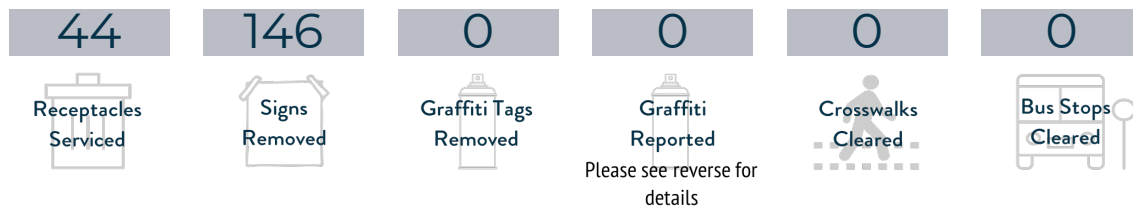
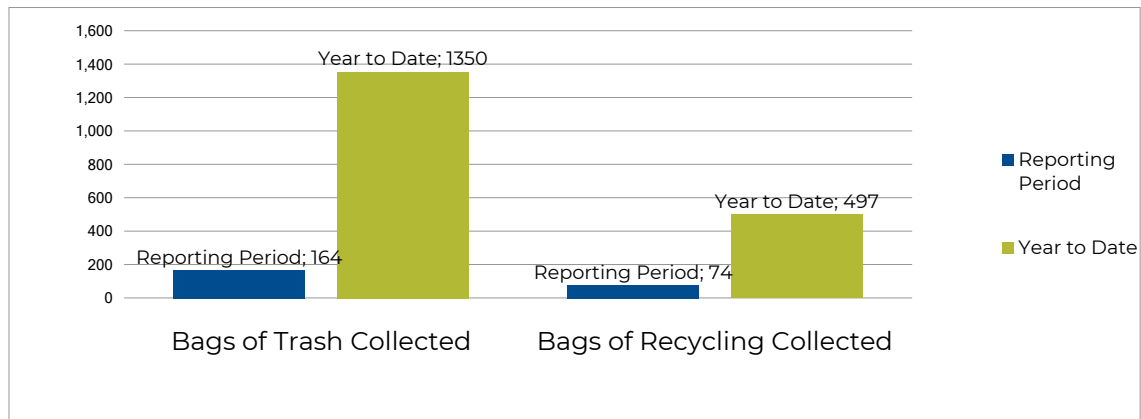
**CLEANSLATE** BY **cara**

Litter Abatement and Recycling – Snow Removal  
Landscaping – Pressure Washing – Graffiti Removal

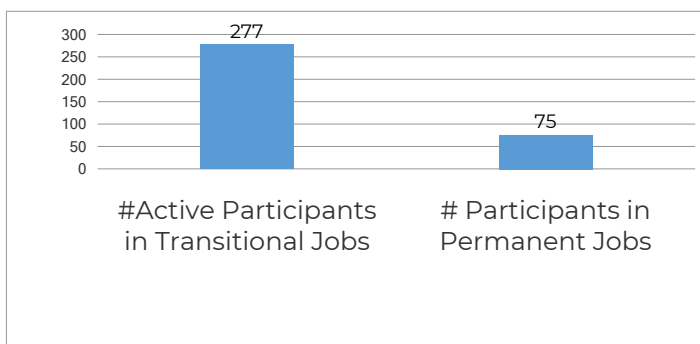
## MISSION STATEMENT

Cleanslate, a social enterprise of Cara, provides paid transitional jobs in exterior maintenance which have a dual purpose - invigorating our communities and providing the platform to help individuals build the skills to secure lasting careers. For more information, please visit [www.cleanslatechicago.org](http://www.cleanslatechicago.org)

## LITTER ABATEMENT



## PARTICIPANT JOB PLACEMENTS, YEAR TO DATE



## TOTAL COMMUNITY REINVESTMENT

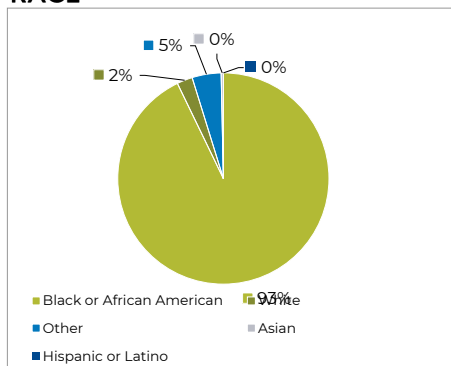
**\$2,607,412**

Includes real earnings for Cleanslate interns in Fiscal Year 2020 and real earnings for Cleanslate interns who were also placed into permanent, quality employment in Fiscal Year 2020.

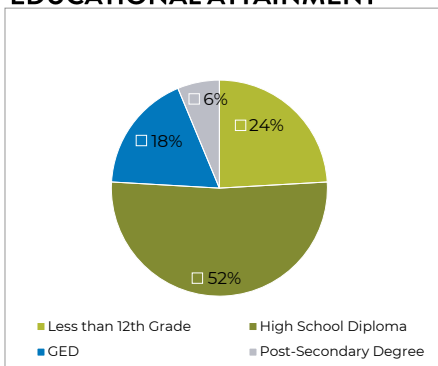
Transitional and permanent jobs noted include activity from all of Cleanslate's contracts; they are not unique to this contract.

## PARTICIPANT DEMOGRAPHICS, YEAR TO DATE

### RACE



### EDUCATIONAL ATTAINMENT



72%

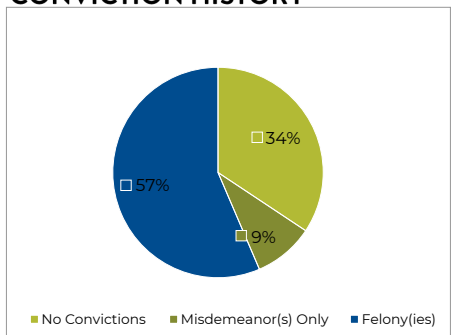
of Cleanslate participants who found permanent jobs stayed employed for at least a year in Fiscal Year 2020!

Cleanslate participants who find permanent jobs currently earn an average hourly wage of...

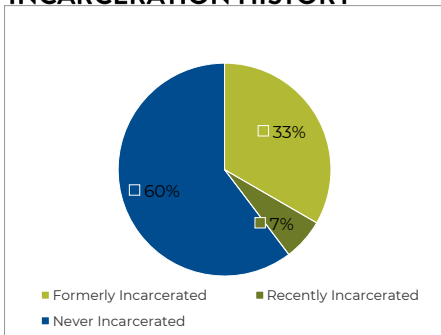


\$16.15

### CONVICTION HISTORY



### INCARCERATION HISTORY



Cleanslate participants who find permanent jobs work...



39

hours per week, on average.

## GRAFFITI DETAIL, YEAR TO DATE

| Date Reported | # of Tags Reported | Graffiti Reference Numbers |
|---------------|--------------------|----------------------------|
|               |                    |                            |

## CONTACT CLEANSLATE

### MAILING ADDRESS

1540 S. Ashland  
Suite 105  
Chicago, IL 60608

### REFER SOMEONE TO OUR PROGRAM

P: 312-226-6361  
E: [contact@cleanslatechicago.org](mailto:contact@cleanslatechicago.org)  
W: [cleanslatechicago.org](http://cleanslatechicago.org)

### LEARN MORE

Cara: [carachicago.org](http://carachicago.org)  
Cara Connects: [caraconnects.com](http://caraconnects.com)

f /CleanslateChicago  
in /CleanslateChicago  
@CleanslateChicago

Property Name: FAR SOUTH  
Inspection Date: 10/2-9/21

COMMENTS/NOTES:



99<sup>TH</sup> / HALSTED EXPWY NB EXIT RAMP BEFORE



99<sup>TH</sup> / HASLTED EXPWY NB EXIT RAMP AFTER



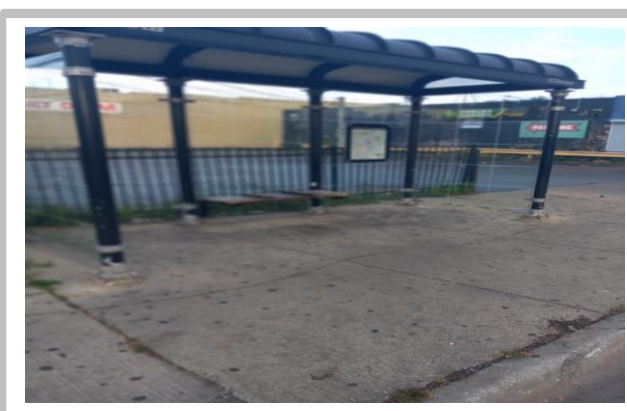
119<sup>TH</sup> / HALSTED BEFORE



119<sup>TH</sup> / HALSTED AFTER



103<sup>RD</sup> / HALSTED BEFORE



103<sup>RD</sup> / HALSTED AFTER

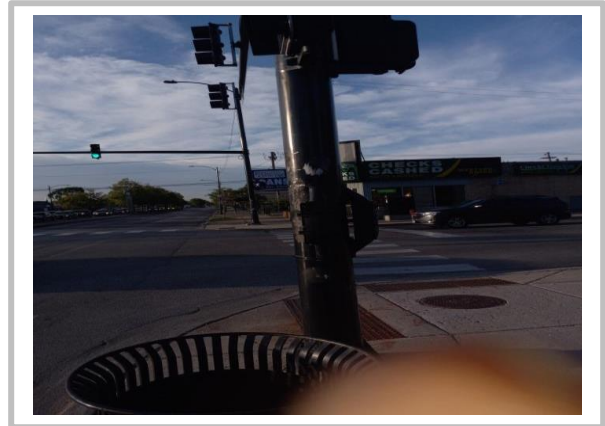


COMMENTS/NOTES:

Property Name:  
Inspection Date: 08/14/20



109<sup>th</sup> / HALSTED BEFORE



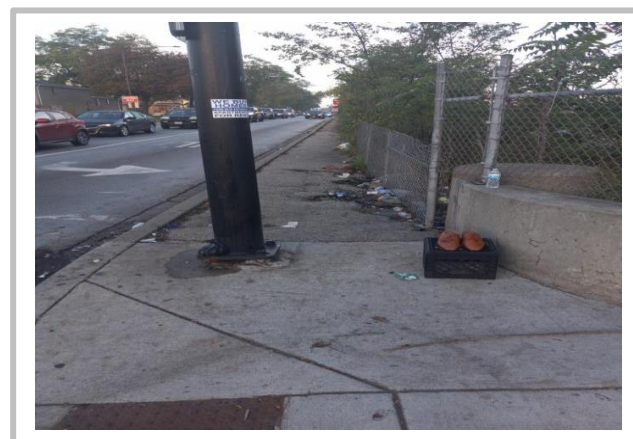
109<sup>th</sup> / HALSTED AFTER



103<sup>RD</sup> / HALSTED BEFORE



103<sup>RD</sup> / HALSTED AFTER



99<sup>TH</sup> / HALSTED EXPWY NB EXIT RAMP BEFORE



99<sup>TH</sup> / HALSTED EXPWY NB EXIT RAMP AFTER

Property Name: FAR SOUTH  
Inspection Date: 10/13-20/21

COMMENTS/NOTES:



119<sup>TH</sup> / PRINCETON BEFORE



119<sup>TH</sup> / PRINCETON AFTER



99<sup>TH</sup> / HALSTED EXPY NB EXIT RAMP BEFORE



99<sup>TH</sup> / HALSTED EXPY NB EXIT RAMP AFTER



99<sup>TH</sup> / HALSTED EXPY SB ENTRANCE RAMP BEFORE



99<sup>TH</sup> / HALSTED EXPY SB ENTRANCE RAMP AFTER



Property Name: FAR SOUTH  
Inspection Date: 10/23-27/21

COMMENTS/NOTES:



115<sup>TH</sup> / HALSTED BEFORE



115<sup>TH</sup> / HALSTED AFTER



115<sup>TH</sup> / HALSTED BEFORE



115<sup>TH</sup> / HALSTED AFTER



103<sup>RD</sup> / HALSTED BEFORE



103<sup>RD</sup> / HALSTED AFTER

Property Name: FAR SOUTH  
Inspection Date: 10/27-30/21

COMMENTS/NOTES:



99<sup>th</sup> / HALSTED EXPY SB ENTRANCE RAMP BEFORE



99<sup>th</sup> / HALSTED EXPY SB ENTRANCE RAMP AFTER



99<sup>th</sup> / HALSTED EXPWY NB EXIT RAMP BEFORE



99<sup>th</sup> / HALSTED EXPY NB EXIT RAMP AFTER

