

Land Planners  
Landscape Architects  
Urban Designers  
Placemakers

Placemaking  
for Better  
Sustainable  
Environments

Ways, Sites + Icons



O V E R S E A S   E N G A G E M E N T S

Planning + Design

P R O F I L E

2024-2025

T +632.7293.0019  
M1 +63917.863.0043  
E [tap.greenedge@gmail.com](mailto:tap.greenedge@gmail.com)  
W [www.greenedgedesign.net](http://www.greenedgedesign.net)

About Us  
Services  
Projects



## What We Do

### PLACEMAKING

### SITE + LAND PLANNING

### LANDSCAPE ARCHITECTURE

### URBAN DESIGN

### PERMACULTURE

### ENVIRONMENTAL ART

leisure + hospitality  
campuses  
townships  
nature + farm resorts  
historic conservation  
public realm  
resource conservation



Land Planners

Landscape Architects

Placemakers

## Our Ethos

Even before LEED went fad and green got gold, practical experience spanning 35 years, underpinned by our interdisciplinary outlook and an overarching mesh with sustainable design has driven our work.

Our hands-on experience in both the humid and arid tropics brings together the synergies of resource conservation, a rich understanding of various cultural and historical contexts, urban-rural dynamics and code-compliance.

Over this, we fold in the client's corporate branding and market positioning that include upscale, iconic projects within sensitive environmental concerns.

## Folio of Projects

For a downloadable full brochure of our projects folio, visit

[www.greenedgedesign.net](http://www.greenedgedesign.net)

Placemaking  
for Better  
Sustainable  
Environments



Placemaking  
for Better  
Sustainable  
Environments



T +632.7293.0019  
M1 +63917.863.0433  
E [tap.greenedge@gmail.com](mailto:tap.greenedge@gmail.com)  
W [www.greenedgedesign.net](http://www.greenedgedesign.net)



# What We Do

## Engagements

Placemaking for Better Sustainable Environments

### Site + Land Planning

In collaboration with other planning and A+E consultants, we formulate site masterplans for **townships, neighborhoods and special districts** defining land uses, circulation and **green infrastructure** including open spaces, conservation areas and scenic resources

### Landscape Architecture

Full-service total-process landscape architecture services from concept to tender documents stage, Construction supervision and Post-construction assistance  
Specialized services include consultations for site selection, **signage and wayfinding, green roofs and vertical greenwalls** among others

### Urban Design

Bridging landscape architecture and urban planning, shaping of urban form elements, circulation, and patterns in the public realm, roadways and civic space through policy and design,  
Scoping of unified urban site furniture elements

### Permaculture

Specialist land and site planning for agroforestry schemes and mixed-use farm resorts bringing together the **synergies of soils science, cropping technologies, water resources management, agricultural engineering, forestry, landscape architecture and tourism planning**

### Environmental Art

Empower places with distinctive landmarks that are works of **landscape art**, combining planting, groundshaping, landscape lighting, water effects and one-of-a-kind sculptures that capture a project's **branding signature**

### Plan + Design Reviews

Third-party independent reviews of other planning and landscape consultants' work to ensure these meet the Client's objectives, branding, and to ensure work is **complete, buildable, code-compliant and sustainable**

Supporting the firm's services are interdisciplinary resources from various disciplines.

Architecture  
Geomatics  
Civil Engineering  
Graphics Design  
Environmental Planning  
Financial Analysis  
+ Planning

**BERDE** [Building for Ecologically Responsive Design Excellence]

Work shown in this Folio illustrate the range of the Principals' experience having been either engaged or professionally involved in the projects.



# About Us

# Principals

## Principals' Affiliations



Philippine Institute of  
Environmental Planners  
[PIEP], Manila



International  
Federation of  
Landscape  
Architects  
[IFLA], Geneva



Philippine  
Association  
of Landscape  
Architects  
[PALA], Manila



Building for Ecologically  
Responsible Design  
Excellence,  
Manila

## Placemaking for Better Sustainable Environments

The Principals bring together more than 35 years of collective practical experience in a wide range of upscale high-end projects commissioned locally and overseas.

**Work had long been grounded on sustainable design long before LEED went fad**, demonstrating the planning and design philosophy behind the practice.

### Rick A Hilario II

MSc | MPIEP | FPALA  
CEO, Technical Services

Rick brings in a rich, **interdisciplinary experience in the planning and design of iconic spaces** well grounded on the **principles of sustainability**. Familiar with branding and complex coordination needed by prime property developers, work engaged spans **a wide range and depth of projects locally and overseas**.

M1 +974.5023.9835  
M2 +63998.537.9734  
E rah.greenedge@gmail.com

### Marianne Balbuena

MPALA | CBP  
Studio + Technical Director

**Overseeing the design documentation of projects** under a common CAD platform, Marianne's design and presentation skills comes with **practical know-how on buildability gained from construction supervision**. Her signature work is evident in the built grounds for a long-running TV reality show : Pinoy Big Brother.

M +63917.852.4479  
E mmb.greenedge@gmail.com

### Christopher S Partolin III

MPALA | CBP  
Studio + Technical Director

Christopher's design management outlook comes grounded from years of maintained **client relations**. **Exposure on green products, technologies and services, and experience in landscape construction industry** brings in practical insights and depth in how project design and documentation can work within client expectations.

M +63908.284.9550  
E csp.greenedge@gmail.com





# About Us

## P r i n c i p a l s

### Principals' Affiliations



Philippine Institute of  
Environmental Planners  
[PIEP], Manila



International  
Federation of  
Landscape  
Architects  
[IFLA], Geneva



Philippine  
Association  
of Landscape  
Architects  
[PALA], Manila



Building for Ecologically  
Responsible Design  
Excellence,  
Manila

## Placemaking for Better Sustainable Environments

Creative work in our design studios are managed under time-based project schedules, providing cost-effective, easy to maintain built work on the ground.

Work had long been grounded on sustainable design long before LEED went fad, demonstrating the planning and design philosophy behind the practice.

### Ronaldo DC Trabajo

CPA | MPICPA | CBP  
Chief Financial Officer

With a track record of turning around his company that now has a regional presence in Southeast Asia, Ronald brings in a solid experience in **financial management and business strategy**. His years as a consulting **business life coach** is a rich resource of visionary market development, combined with practical experience as a **certified public accountant**.

M +63918.900.4379  
E rdt.greenedge@gmail.com

### Gracelyn A Arquisola

Director,  
Business Development

Riding onto her **civil engineering** education, Grace's early launch as an entrepreneur in the site construction industry brings in her gift for **marketing and business operations**. Acting as lead for new and recurring business development, her capability for business networking is merged with the goals of the firm's Design Studios.

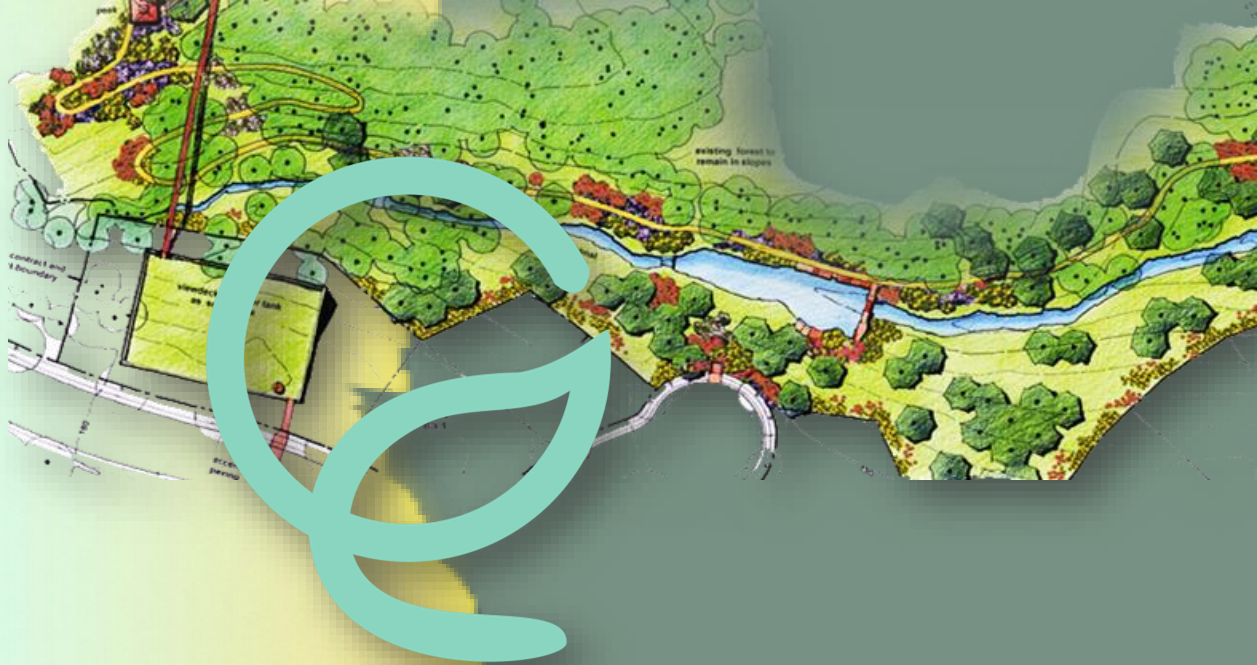
M1 +63917.703.0021  
E grace\_arquisola@yahoo.com

### Francesca S. Reyes

MPALA | CBP  
Studio + Technical Coordinator

Francesca, a licensed landscape architect with a keen eye for detail, provides a **fresh perspective in developing designs** and visually communicating these in compelling presentations. She mentors emerging talents, fosters collaboration and inspires creative thinking, contributing to a vibrant and innovative atmosphere across design teams.

M1 +63917.552.9928  
E fsr.greenedge@gmail.com



## OVERSEAS ENGAGEMENTS

### PLACEMAKING PROJECTS

SITE + LAND PLANNING  
LANDSCAPE ARCHITECTURE  
URBAN DESIGN  
PERMACULTURE  
ENVIRONMENTAL ART

### OUR RANGE Ways, Sites + Icons

Local + International  
Plot to Township Scale  
Arid + Humid Tropics  
Corporate, Government + Institutional  
Planned Developments  
Public Realm



## Office + Hotel Block, Financial Center District

West Bay Doha, Qatar

## Design

## Landscape Architecture Mixed-Use Office Development

### Greenroofs

Stacked layers of intensive greenroofs are throughout this **9-tower** mixed-use block development, spread out in and among buildings in some **7 hectares** across the Doha waterfront corniche.

### Canopies

Canopy patterns in **overlapping circles** were designed to contrast against the façade's mashrabiya lattice screens. *[left below].*

Since design completion, the project was totally acquired as **Qatar Petroleum's** corporate headquarters

Design and Executive Architects **KEO International**  
Site Design Concept **Rick A Hilario II** lead design while with KEO







**Design**

**Landscape Architecture**  
Mixed-Use Office Development

Office + Hotel Block,  
Financial Center  
District  
West Bay  
Doha, Qatar

**Water Feature  
at Arrival Plaza**

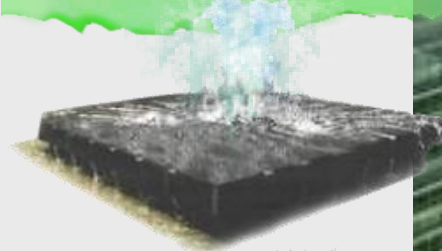
Since design completion, the project  
was totally acquired as **Qatar Petroleum's**  
corporate headquarters

Design and Executive Architects: KEO International  
Site Design Concept: Rick A. Hilario II lead design team with KEO



Office + Hotel Block,  
Financial Center District  
West Bay Doha, Qatar

## Design



## Landscape Architecture Mixed-Use Office Development



### Water Features, Pooldecks

Seen as important, water featured prominently in the ground and roofdeck levels. Themed water features and a pooldeck at the hotel tower's penthouse level accommodated a split-level **adult and kiddie pool** integrated with a **waterplay area**.

Design and Executive Architects **KEO International**  
Site Design Concept **Rick A Hilario II** lead design while with KEO



stainless steel basin



water berm  
using indescient  
glass mosaic tiles



dry fountain

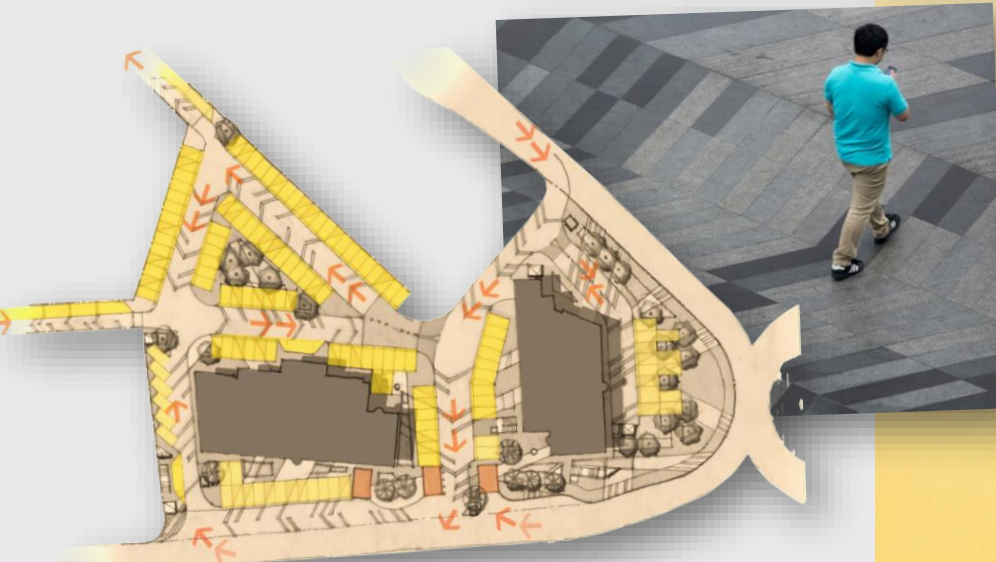
runnel



## Design

### Office Block, Kuwait Business Town [KBT] Al Sharq Kuwait City, Kuwait

Overlooking Kuwait's central business district (CBD), this planned office tower development was built around by a parking motorcourt. **The expanse of paving was proposed to assume a graphic diagrid pattern to serve as a traffic directional cue and at the same time to break out the outline of a conventional parking space.**



## Landscape Architecture Office Development



In keeping with a security strategy, planters at the streetfront doubled up as **safety barriers**.





## Office Towers, Abraj Quartier

The Pearl, Qatar

### Gateway to Pearl Island

These twin towers are portals to Qatar's resort playground, The Pearl. Offices open up to **terraced greenroofs** overlooking panoramas of the West Bay and the Doha Urban Area.

Apart from the **grounds merging with the public realm, the design of greenroofs at split-level podiums and sky gardens** was also part of the engagement.

A **salt and wind-tolerant planting** was kept as simple as possible, softening up the hard and formal edges of the building envelope.

Design Architects **WMZH**  
Executive A+E Design **KEO**

Landscape Architecture Lead Design,  
**Rick A Hilario II** while with **KEO**

## Design



## Landscape Architecture Mixed-Use Residential Highrise





Office  
Towers,  
Abraj  
Quartier  
The Pearl,  
Qatar



## Design

## Landscape Architecture Mixed-Use Residential Highrise



The Oyster Poolbar



Design Architects **WMZH** Executive A+E Design **KEO**

Landscape Architecture Lead Design,  
**Rick A Hilario II** while with **KEO**



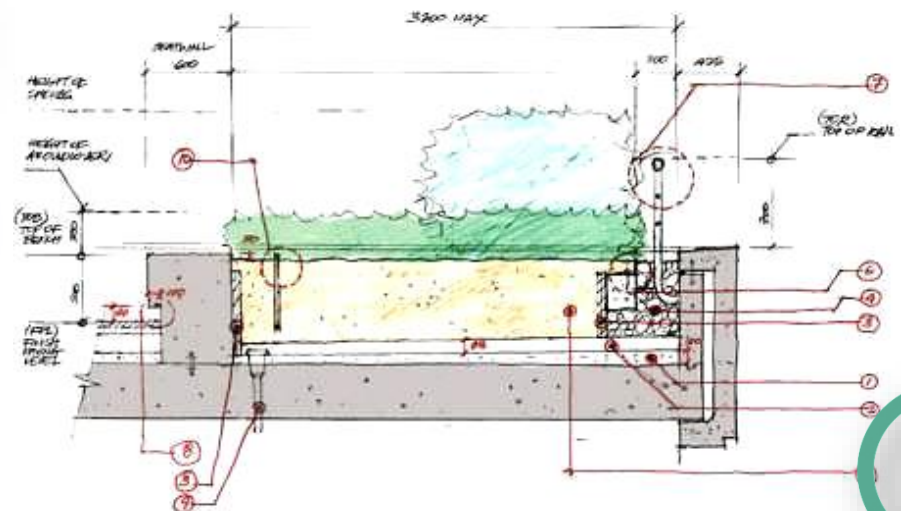


# Landscape Architecture

## Mixed-Use Residential Highrise

**1/3**  
**Weight**

Landscape Architecture Lead Design,  
**Rick A Hilario II** while with **KEO**





## Mixed-Use, Qanat Quartier The Pearl, Qatar

**Pockets of greenery** were strategically inserted in this highly built-up development to relieve the expanses of paving.

# Design

# Landscape Architecture

Mixed-Use Residential



Executive A+E Design KEO

Landscape Architecture Lead Design,  
Rick A Hilario II while with KEO



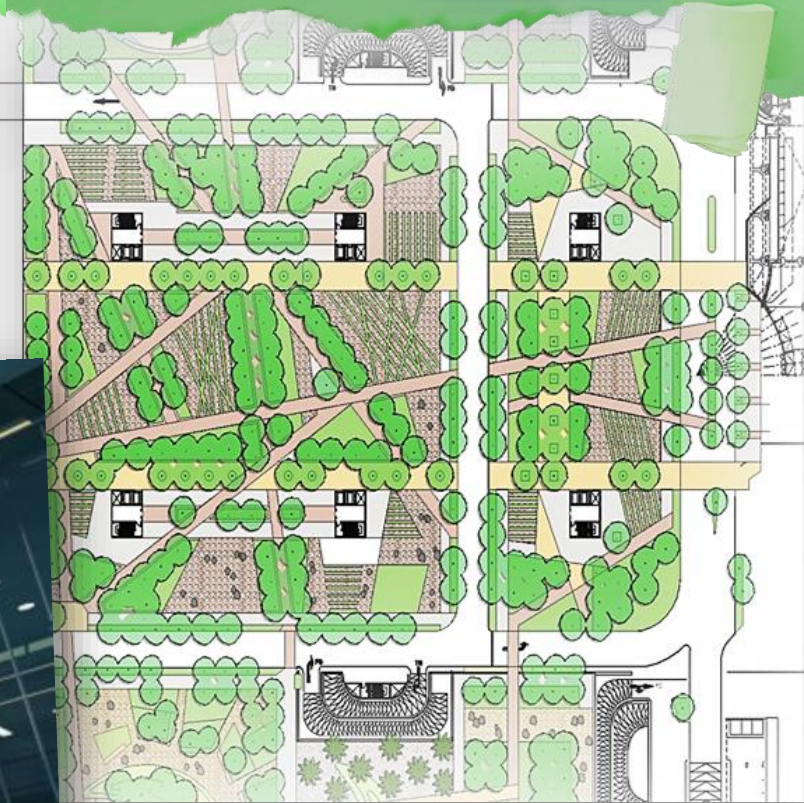
Civic Center  
**Jahra Ministries Complex**  
Jahra Governorate , Kuwait

## Design

## Landscape Architecture Public Realm

### Retail + Institutional Integration

As a one-stop shop, this 35-hectare civic space integrates retail zones for **24/7** public convenience. The landscape design has **circulation cutting across the site orthogonally anticipating desire lines**. Pedestrian movement cuts across gardens in contemporary water-wise design.



Partial Site Plan :  
**Pearl Place, Ground Level**



view of building envelope at main drop-off  
from the Pearl Plazas





Civic Center  
Jahra Ministries Complex  
Jahra Governorate, Kuwait

## Design

## Landscape Architecture Public Realm





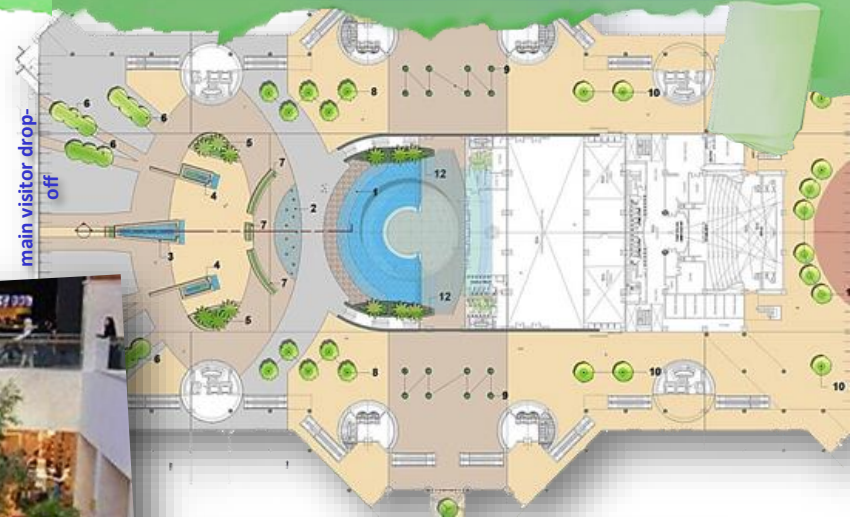
Civic Center  
**Jahra Ministries Complex**  
Jahra Governorate, Kuwait

## Design

## Landscape Architecture Interior Plantscaping

### Green Islands

A combination of natural and artificial daylighting allow inclusion of interior **planting islands and green-walls** for an inviting mall-like effect.



Ovoid form-factor planters of variable diameters provide seating opportunities, apart from dining sets associated with designated retail spaces within the facility.

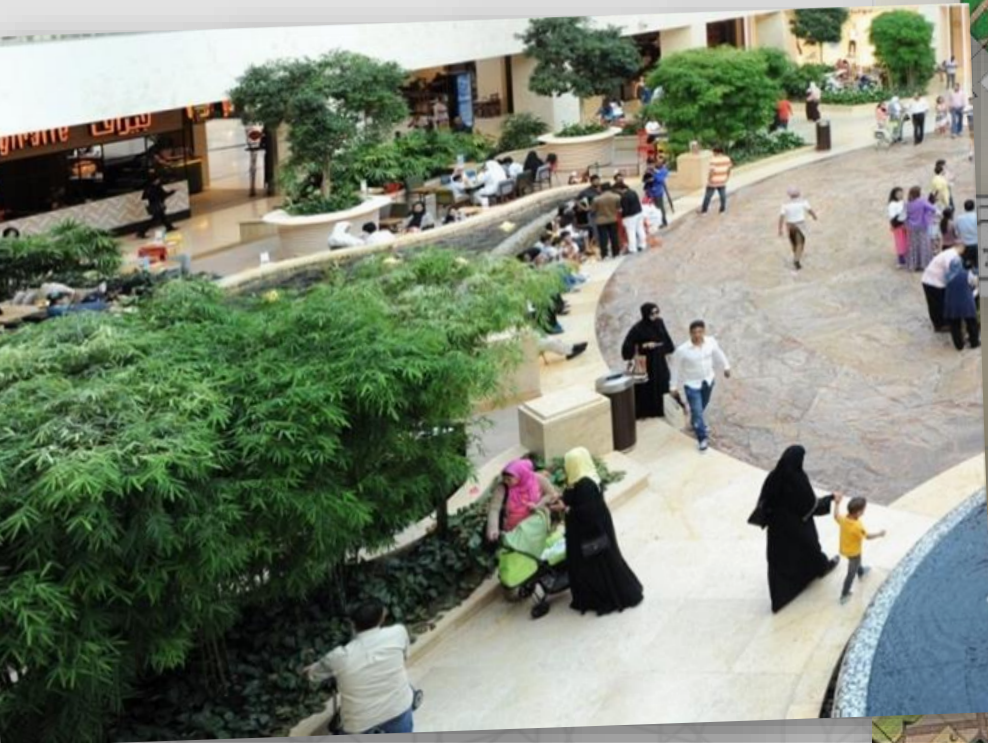




Civic Center  
**Jahra Ministries Complex**  
Jahra Governorate, Kuwait

## Design

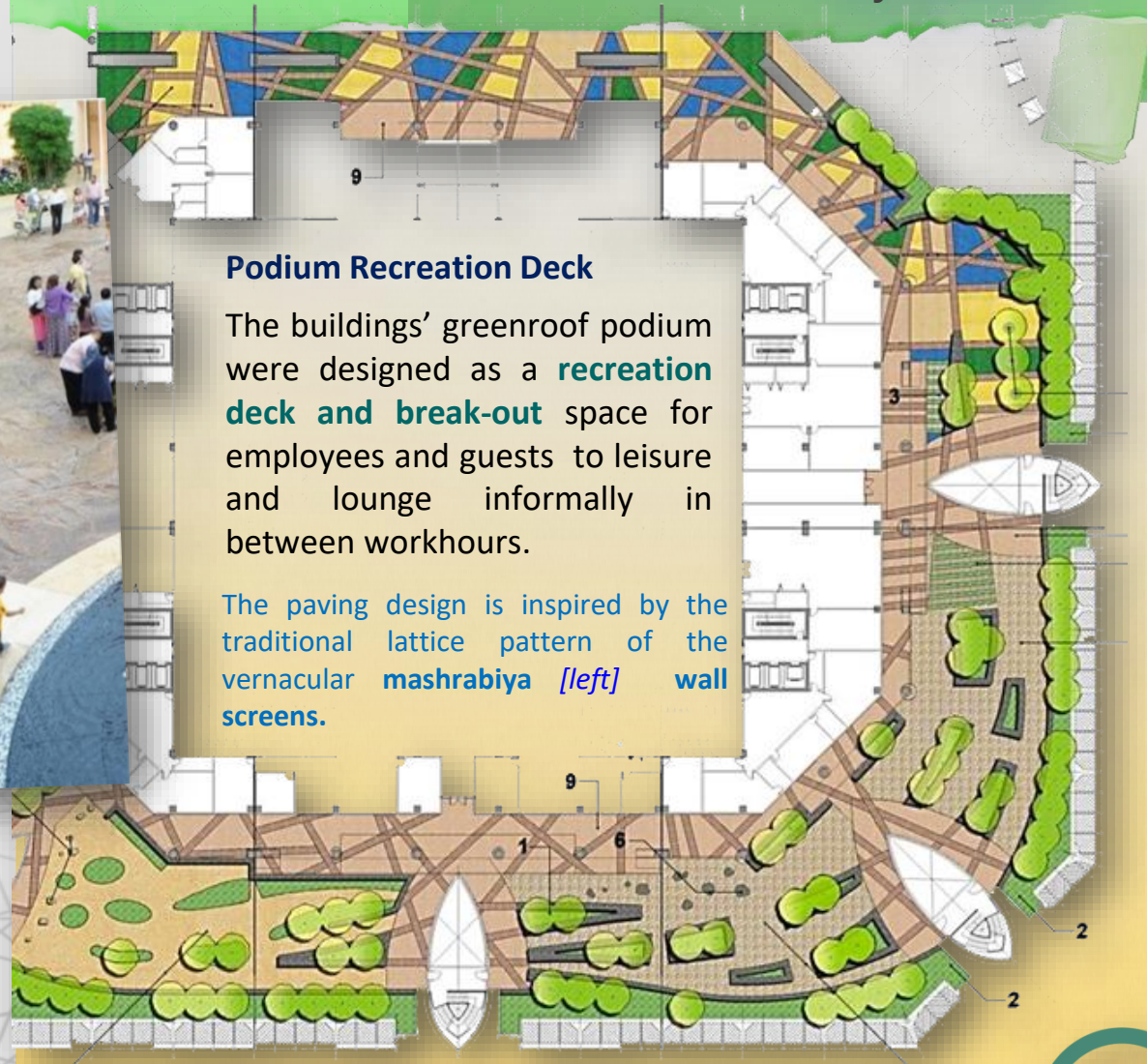
## Landscape Architecture Sky Gardens



### Podium Recreation Deck

The buildings' greenroof podium were designed as a **recreation deck and break-out** space for employees and guests to leisure and lounge informally in between workhours.

The paving design is inspired by the traditional lattice pattern of the vernacular **mashrabiya [left] wall screens.**





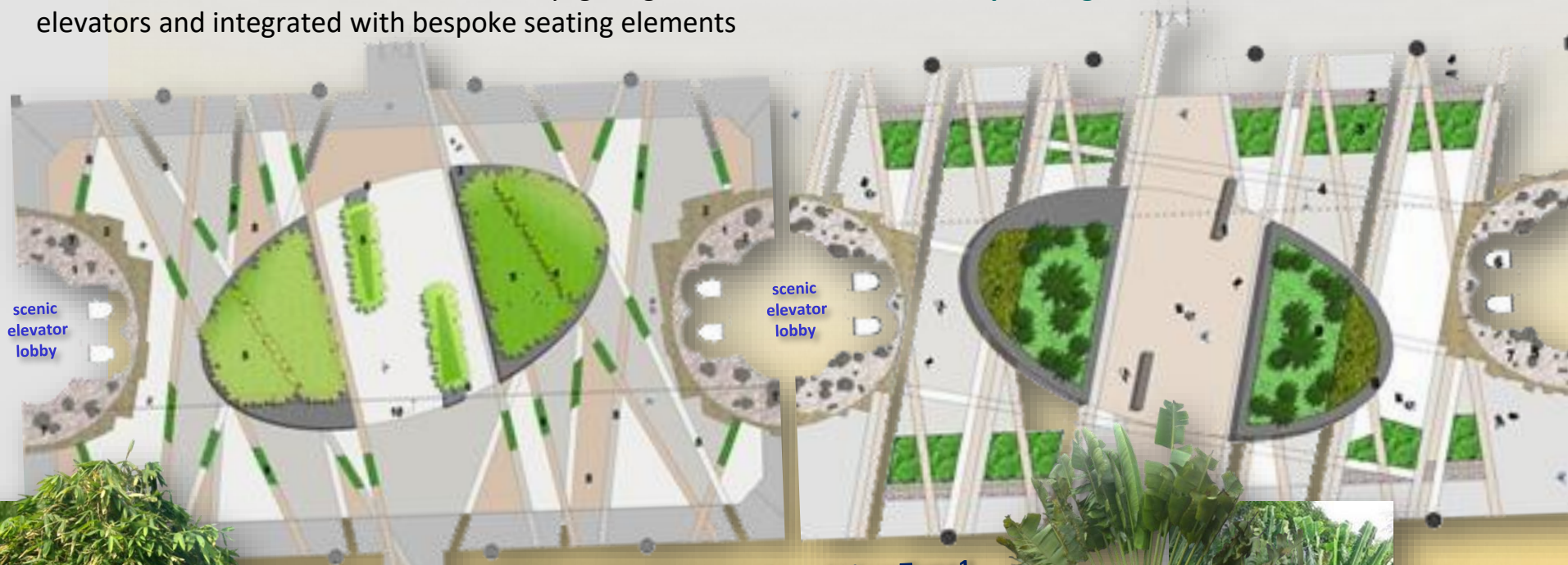
# Design

# Landscape Architecture Interior Plantscaping

Civic Center  
**Jahra Ministries Complex**  
Jahra Governorate , Kuwait

## Atriums at Various Lobby Nodes

A combination of natural and artificial daylighting allow inclusion of interior **planting islands**, viewable from scenic elevators and integrated with bespoke seating elements



**Atrium Type 2,  
Blocks C + D**

fast-growing tropical  
bamboo clusters in  
planters make a  
sustainable carbon sink

**Atrium Type 1,  
Blocks A + B**

Ravenala specimen  
clusters with understory  
provide a departure from  
the usual interior palms





## Mixed-Use Mall + Office Towers, The Promenade

Hawally

Kuwait City, Kuwait

### Hardscape Design

Given the limited green footprint in the public realm allocated for this mall, the solutions were mostly in hardscape design in **surfacing and paving finishes while meeting ADA-compliance grading design**. Limited planting in raised planters was possible and tree planting out of the way of street utilities and services.

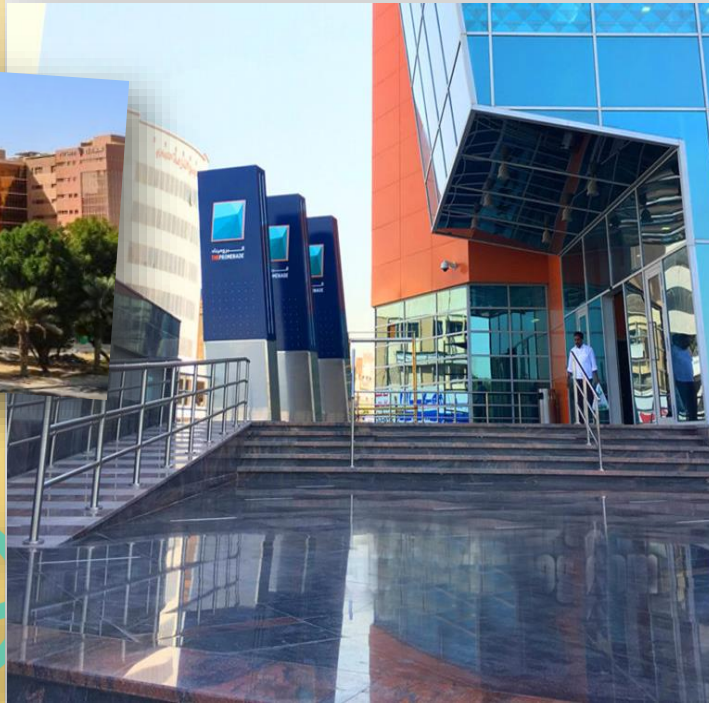
### Design

### Landscape Architecture Retail + Commercial



### Canopies

Canopies over entrances were co-created with the architects to impart a **distinct ambience**.





# Residential Highrise, Al Shams Beach Towers

Abu Dhabi, UAE

## Shared Amenity Podium

A common amenity podium shared by two residential towers is designed as a split-level deck with **a central pool** and **al fresco dining**.

## Design

## Landscape Architecture Mixed-Use Residential Highrise





## Planning

Botanic Center, **Bayan Palace**  
Amiri Guest Palace Bayan, Kuwait

### Outdoor + Indoor Plant Exhibits

Both outdoor and indoor house plant collections have added to Kuwait's biodiversity. The greenhouse conservatories are totally climate-controlled featuring a selected display of five [5] biomes or bioecological regions.

The facility is a recent addition to attractions for visiting foreign dignitaries billeted at the Palace, as with Bill Gates on a tour of the center *[left below]*.



## Site Planning Biodiversity + Conservation





# Planning

## Site Planning Biodiversity + Conservation

Botanic Center, **Bayan Palace**  
Amiri Guest Palace Bayan, Kuwait

### Xeriscape

Spread in 14 hectares of crown land in the Amiri Diwan's guest palace for diplomatic dignitaries, this educational facility was masterplanned and designed also open public use on certain events. With an emphasis on desert-adapted water-wise planting, the design challenge for a **xeriscape strategy** was to have a palette of color in a flat featureless landscape.





# Planning

## Recreation Deck, Lusail Towers Lusail City Waterfront Lusail, Qatar

Located in reclaimed land, the **waterfront development is part of an urban leisure and retail precinct**. Heavy demand for street-level parking has prompted a site circulation legible to both motorists and pedestrians. Landscape design was done to design development stage.



## Site Planning Multi-Use Developments



Scope of the site design was the **split-level amenity deck** linking the residential with the retail towers., as shown in the axonometric plan *[above]*.

Also designed was the ground level landscape design, with an emphasis on reformatting the **pedestrian circulation and the introduction of traffic calming strategies**.

Design and Executive Architects **KEO International**  
Site Design Concept **Rick A Hilario II** lead design while with KEO



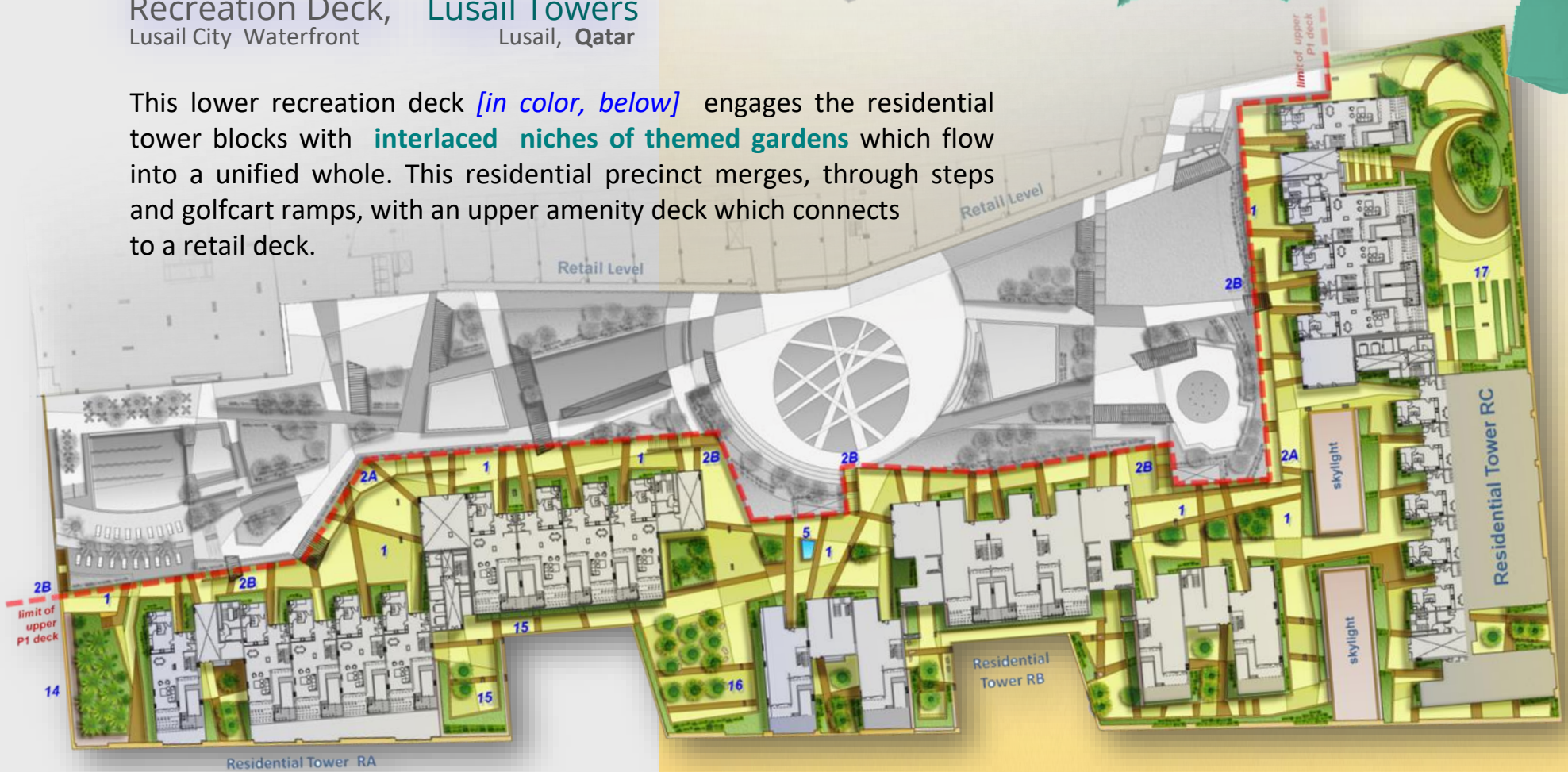


# Planning

## Site Planning Multi-Use Developments

### Recreation Deck, Lusail Towers Lusail City Waterfront Lusail, Qatar

This lower recreation deck *[in color, below]* engages the residential tower blocks with **interlaced niches of themed gardens** which flow into a unified whole. This residential precinct merges, through steps and golfcart ramps, with an upper amenity deck which connects to a retail deck.



Site Development Plan,  
Lower Deck Residential Towers

The site circulation, while allowing direct convenient access to each unit, emulates the **Old World feel of the traditional Arab village street pattern**.





# Planning

## Site Planning Multi-Use Developments

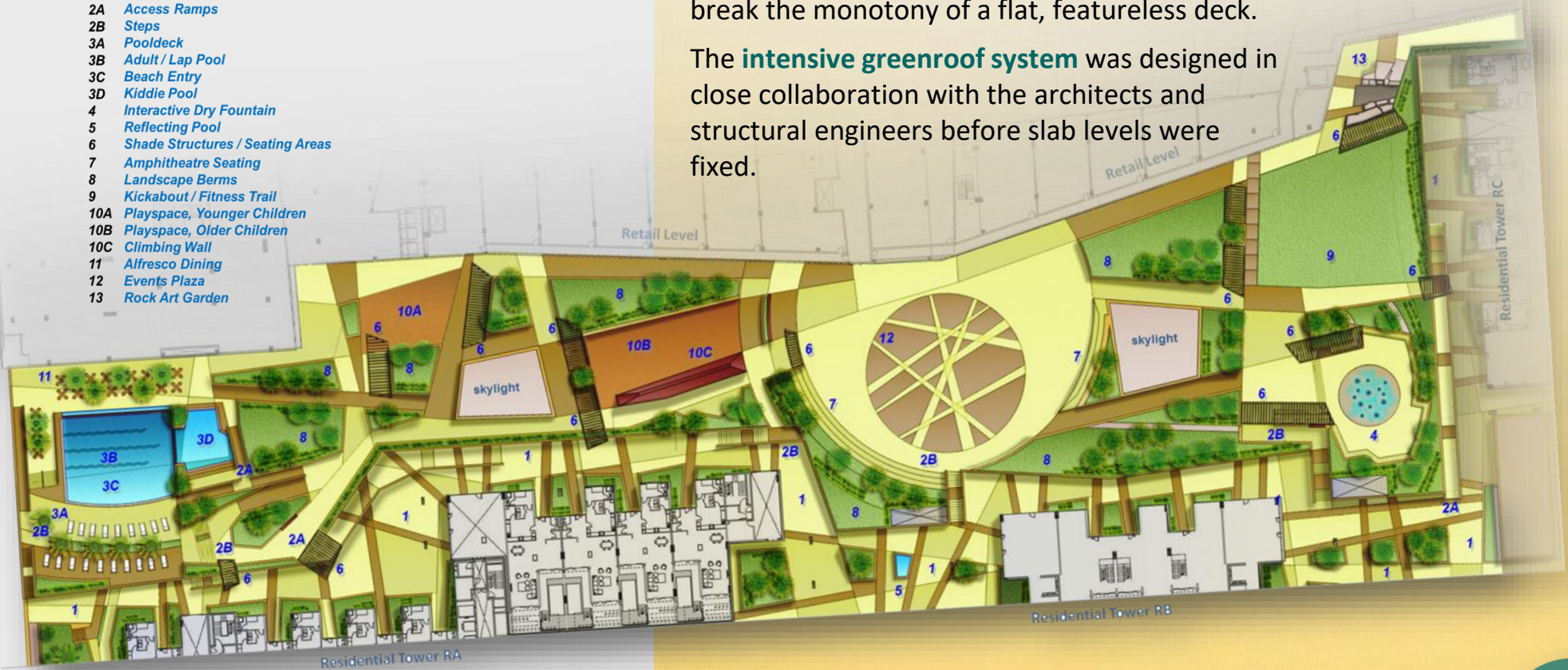
Recreation Deck, Lusail Towers  
Lusail City Waterfront Lusail, Qatar

### Site Programme

- 1 Entry / Arrival Statements
- 2A Access Ramps
- 2B Steps
- 3A Pooldeck
- 3B Adult / Lap Pool
- 3C Beach Entry
- 3D Kiddie Pool
- 4 Interactive Dry Fountain
- 5 Reflecting Pool
- 6 Shade Structures / Seating Areas
- 7 Amphitheatre Seating
- 8 Landscape Berms
- 9 Kickabout / Fitness Trail
- 10A Playspace, Younger Children
- 10B Playspace, Older Children
- 10C Climbing Wall
- 11 Alfresco Dining
- 12 Events Plaza
- 13 Rock Art Garden

This split-level amenity deck was programmed to provide a wide range of leisure amenities to tower residents, animating the entire deck space with a **play of levels and inclined greens** to break the monotony of a flat, featureless deck.

The **intensive greenroof system** was designed in close collaboration with the architects and structural engineers before slab levels were fixed.



Design and Executive Architects **KEO International**  
Site Design Concept **Rick A Hilario II** lead design while with KEO

Site Development Plan,  
**Upper Entertainment Deck Residential Towers**



# Highrise, Lusail Towers

Lusail City Waterfront Lusail, Qatar

## Design

## Landscape Architecture

Multi-Use Developments

### Amenity Multi-level Deck

The flat, featureless deck had to be articulated with **changes in levels for kinetic and visual interest** *[below]* and to demarcate and mediate between the retail and residential zones.



### Site Signage

Schematics for site signage as environmental art provided the key strategy for a **welcome and arrival statements** to various parts of the development.

Design and Executive Architects **KEO International**  
Site Design Concept **Rick A Hilario II** while with KEO





## Highrise, Lusail Towers

Lusail City Waterfront Lusail, Qatar

## Design

## Landscape Architecture

Multi-Use Developments

### Sky Gardens

A resilient **wind and salt-spray tolerant plant palette** was selected for the skygardens. [\[image, right\]](#)

### Canopies at Entrances

Working closely with the building architects and structural engineers, **distinct identities** for the major entrances called for varying canopy patterns to boldly announce these portals [\[images, below\]](#).



Design and Executive Architects **KEO International**  
Site Design Concept **Rick A Hilario II** while with KEO



## Design

## Urban Design

Retail, Leisure + Hospitality

### Mixed-Use Mall + Hotel Towers, The Reem Mall

Reem Island

Abu Dhabi, UAE

#### Seamless Merge with Public Realm

From building envelope to street curb, the transition projects a whole seamless experience. Entry through a signature **ramp and steps passing through vegetated slopes at greenroofs** is a progressive realization into the multi-level retail zones designed to better engage the public.



Design and Executive Architects **KEO International**  
Landscape Design Concept **Rick A Hilario II** lead design while with **KEO**



#### Coordination of Utilities, Retail Planning

Multiple stakeholders were consulted to resolve clashes with existing and proposed utility and services alignments along the streetscape.

The greenroof designs had to be resolved with Structural and MEP engineers as with retail consultants





## Historic District, The Heritage Village

Al Sharq

Kuwait City, Kuwait

### Adaptive Reuse

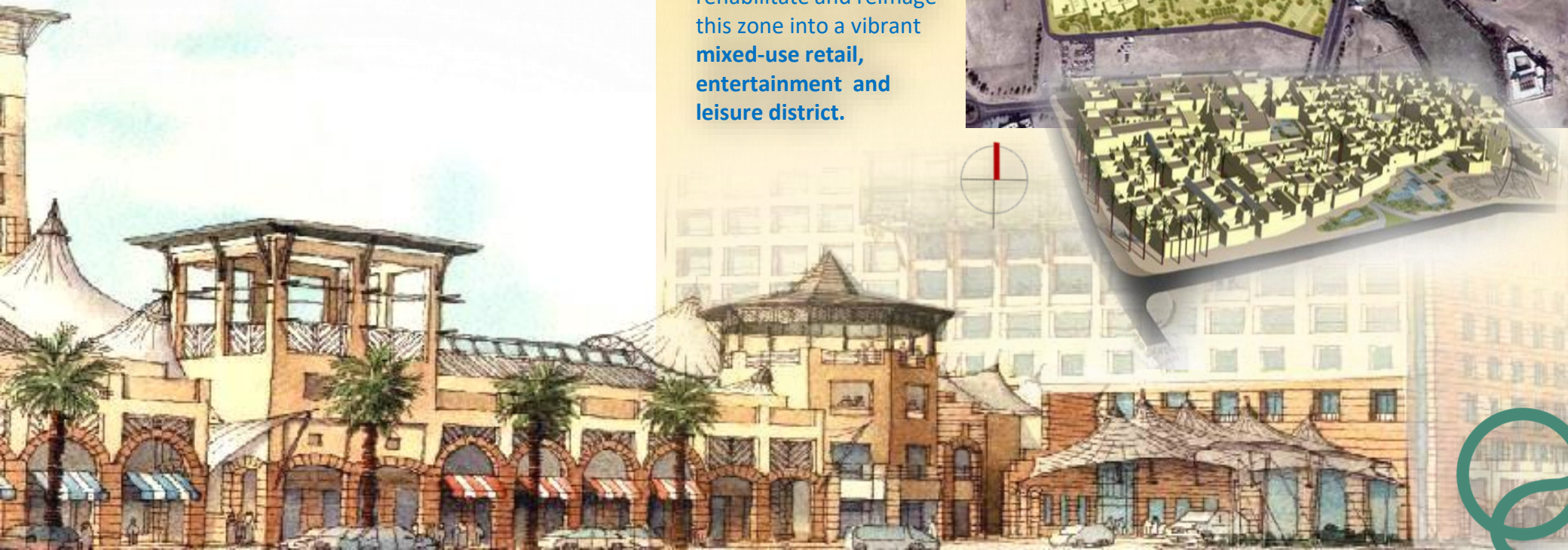
Retaining most of the traditional village's street pattern, the urban design drew inspiration from a traditional vocabulary of village life's maritime past.

## Design

Along the strategic Gulf Road by the corniche, the site *[in yellow, right]* was once an old fishing village spread out in some **7.5 hectares**.

The proposed development attempts to rehabilitate and reimage this zone into a vibrant **mixed-use retail, entertainment and leisure district**.

## Urban Design Heritage Conservation





## Historic District, The Heritage Village

Al Sharq

Kuwait City, Kuwait

### Site Elements

Site furniture, signage and wayfinding and environmental art were folded into an **overarching unified theme** that celebrated the maritime tradition of old Kuwait in a vibrant animated ambience.

Part of the old city wall that used to run through this district was rediscovered and commemorated in paving.



educational exhibits as site furniture *[above]*  
replica maritime artifacts such as these  
ancient ship's stone and wooden  
anchors *[right]* were part  
of the site's environ-  
mental art and site furniture  
statements



## Design



commemorative paving,  
marking the old Kuwait  
fortress wall



## Urban Design Heritage Conservation





# Design

## Urban Design Heritage Conservation

### Historic District, The Heritage Village

Al Sharq

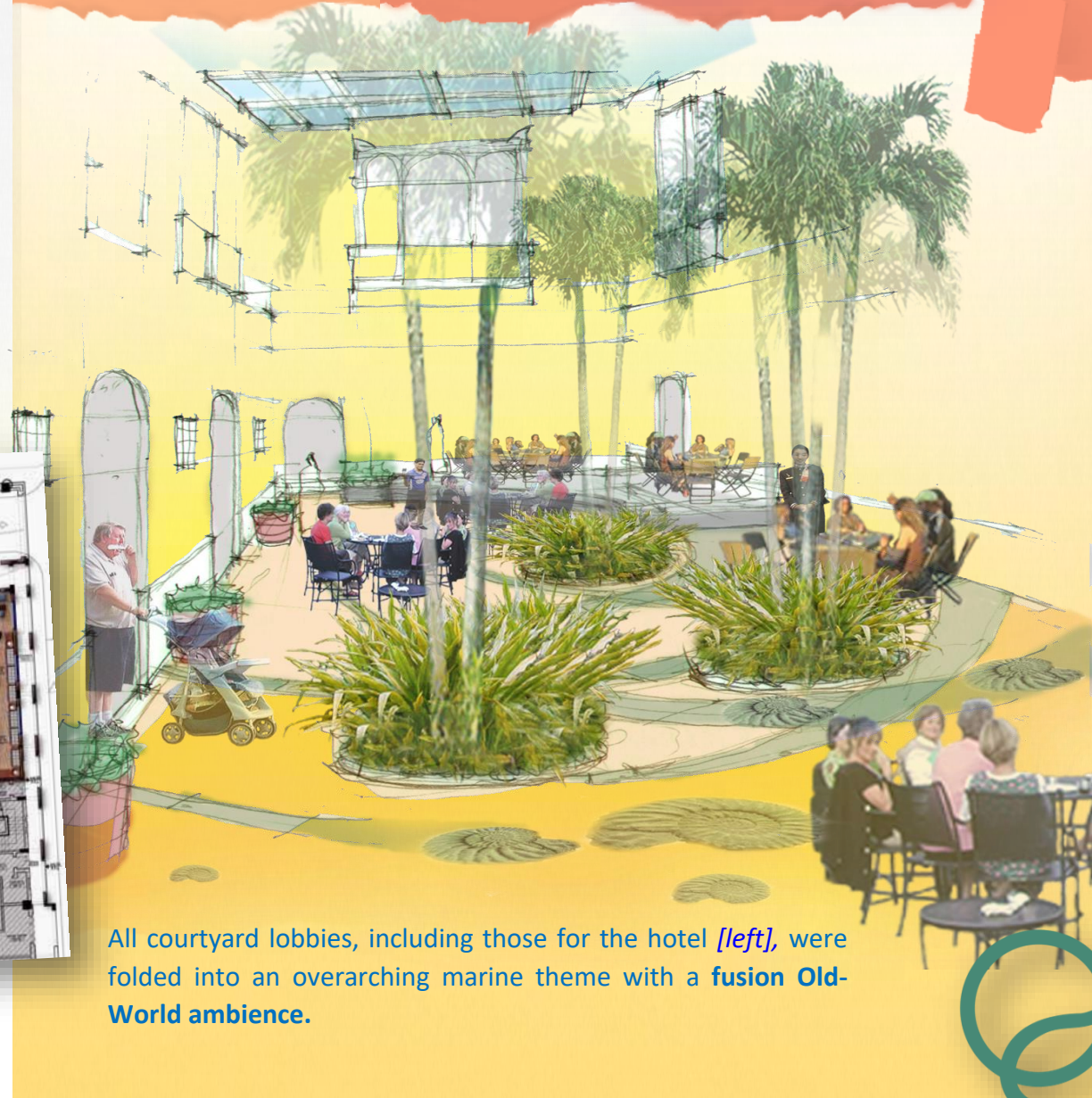
Kuwait City, Kuwait

#### Interior Plantscaping, Inner Courtyards

Working with the interior architect, space planning and furniture layout was iterated with the strategic positioning of **water features and planting**. Likewise, paving patterns had to reflect with the maritime theme of the project.



Main Lobby, Hotel



All courtyard lobbies, including those for the hotel [left], were folded into an overarching marine theme with a **fusion Old-World** ambience.



## Historic District, The Heritage Village

Al Sharq

Kuwait City, Kuwait

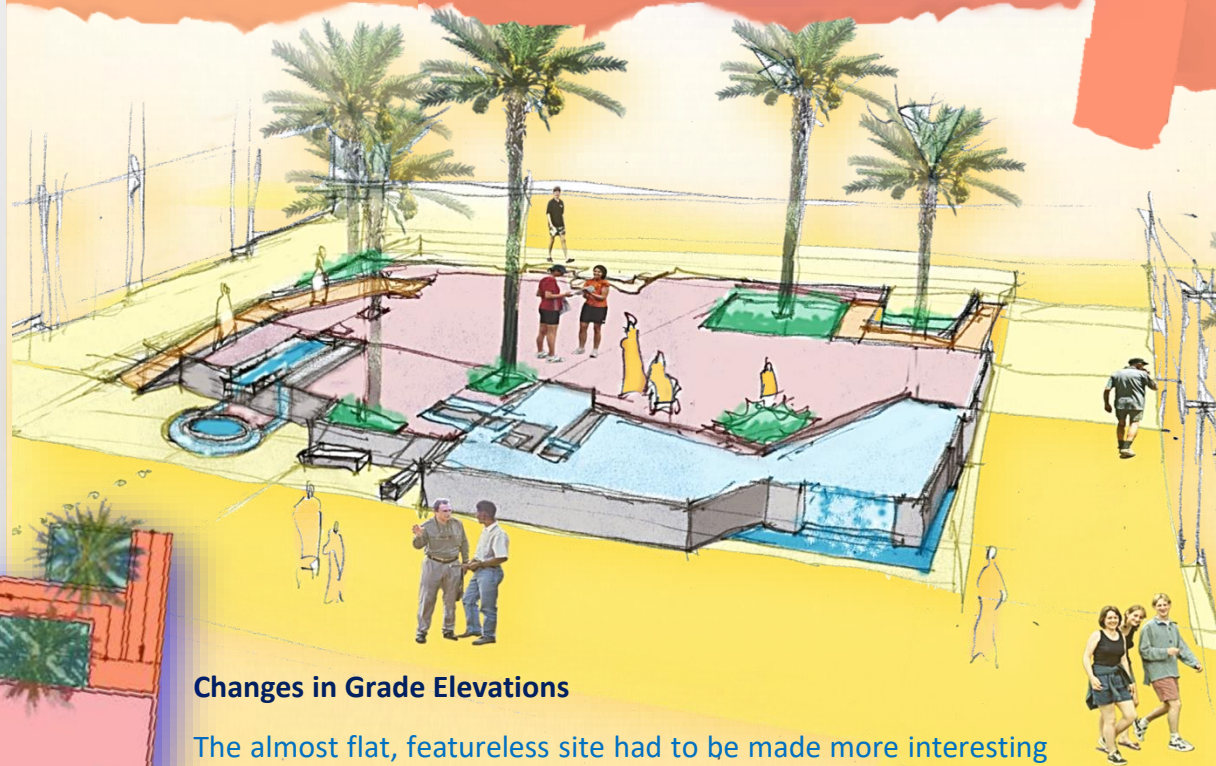
### Outer Courtyards

Given the design restrictions imposed by the depths of structural slab levels, raised podiums were created for both visual interest and to allow planting of large planting materials.



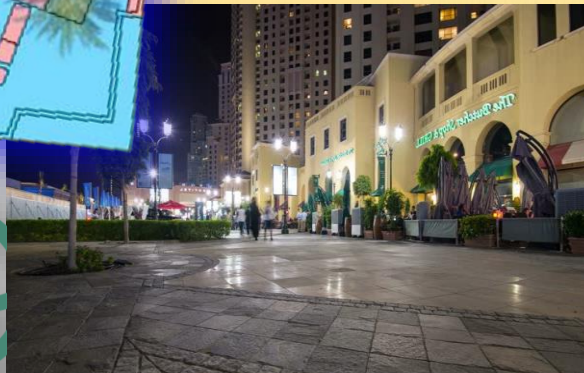
## Design

## Urban Design Heritage Conservation



### Changes in Grade Elevations

The almost flat, featureless site had to be made more interesting by creating grade changes such as raised podiums at the courtyards accessible by ramps.





## Design

## Landscape Architecture Leisure + Hospitality

### 4-Star Hotel, The Julai'a Resort Sabahiya Kuwait

This holiday villa beachfront resort incorporated secluded quiet, themed private pools for **VIP suites** designed for family getaways. The drop to the beachfront was resolved with grassed berms with panoramas of Kuwait Bay.





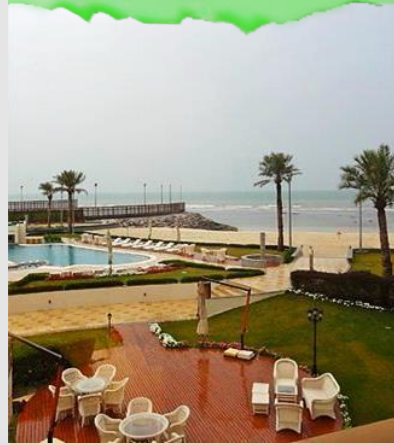
## Design

### 7-Star Hotel, The Regency

Salwa, Kuwait

Damaged after the first Gulf War, this old hotel was rehabilitated with a new look for its waterfront pooldeck. Seating coves articulate the deck.

Working with coastal hydraulics engineers, the beachfront was modified with a sand nourishment scheme.



### Interactive Dry Fountain, Pools

A dry fountain was retrofitted for its appeal to all ages *[above right]*. A lap pool is separated by a multilevel deck from the main lounge pool.





## Design

## Landscape Architecture

Retail, Hospitality + Leisure

### Mixed-Use Mall + Hotel Towers, The Reem Mall

Reem Island

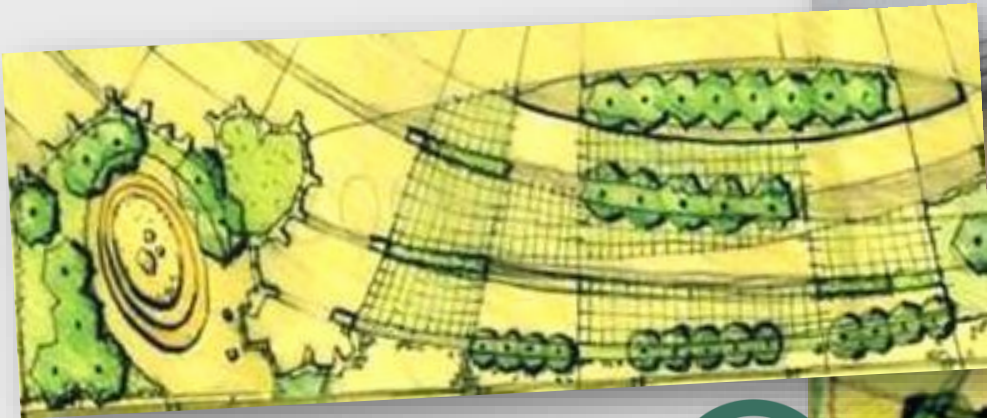
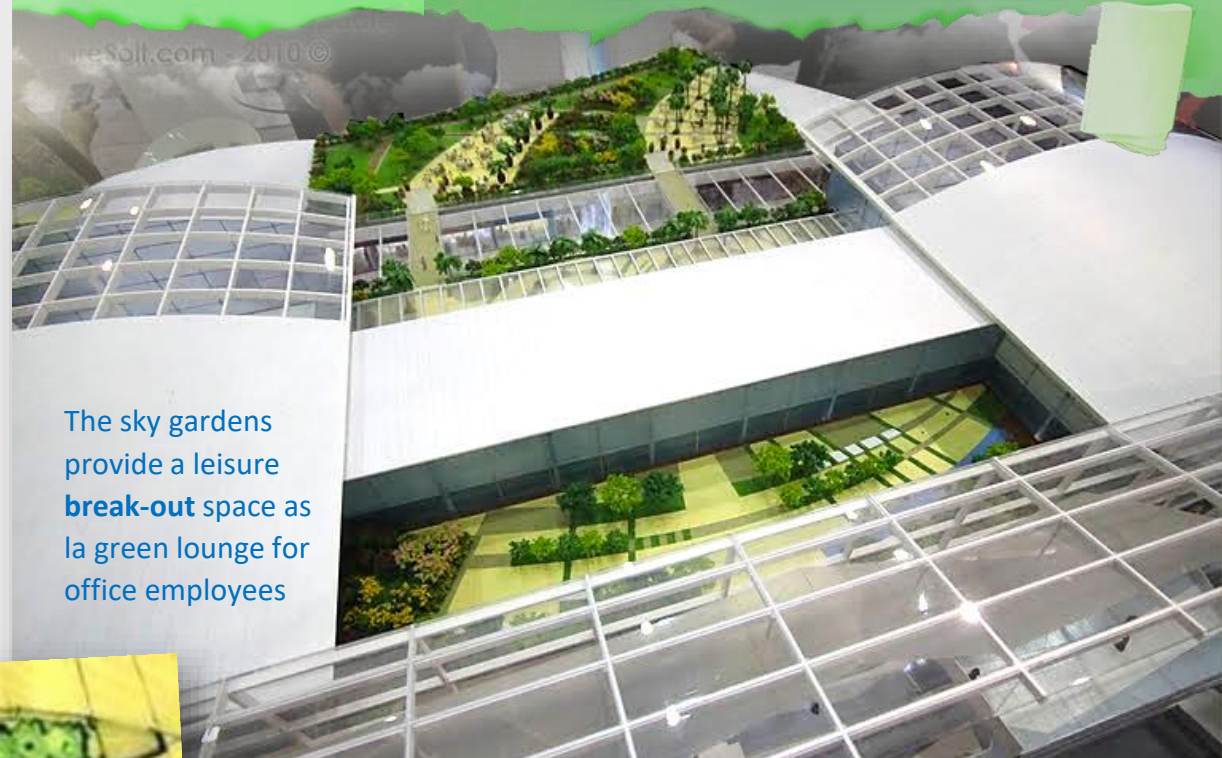
Abu Dhabi, UAE

#### Multi-Level Roofdeck Sky Gardens

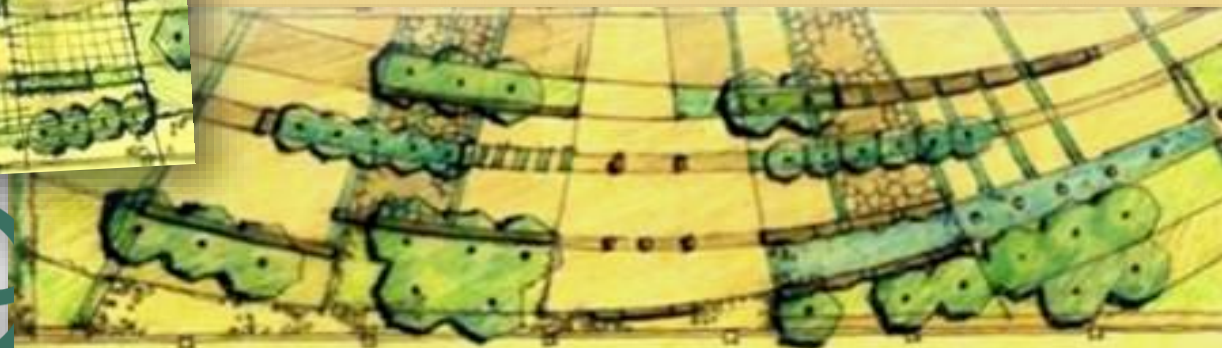
The original designs *[from sketches below]*, were faithfully adopted and presented as the development intent during a media launch for investors sometime in 2010.

Office spaces at the upper roofdeck complete the tenant mix for the project to which these deck gardens wrap around with.

The sky gardens provide a leisure **break-out** space as la green lounge for office employees



Design and Executive Architects **KEO International**  
Landscape Design Concept **Rick A Hilario II** lead design while with **KEO**





## Design

## Landscape Architecture

Retail, Hospitality + Leisure

### Mixed-Use Mall + Hotel Towers, The Reem Mall

Reem Island

Abu Dhabi, UAE

#### Vertical Gardens

Vertical gardens were conceptualized to soften up and enliven the mall's interiors, using a tested palette of lush tropical plant materials that do well under climate-controlled indoors.



Design and Executive Architects **KEO International**  
Landscape Design Concept **Rick A Hilario II** lead design while  
with **KEO**





## Design

## Landscape Architecture

Retail, Hospitality + Leisure

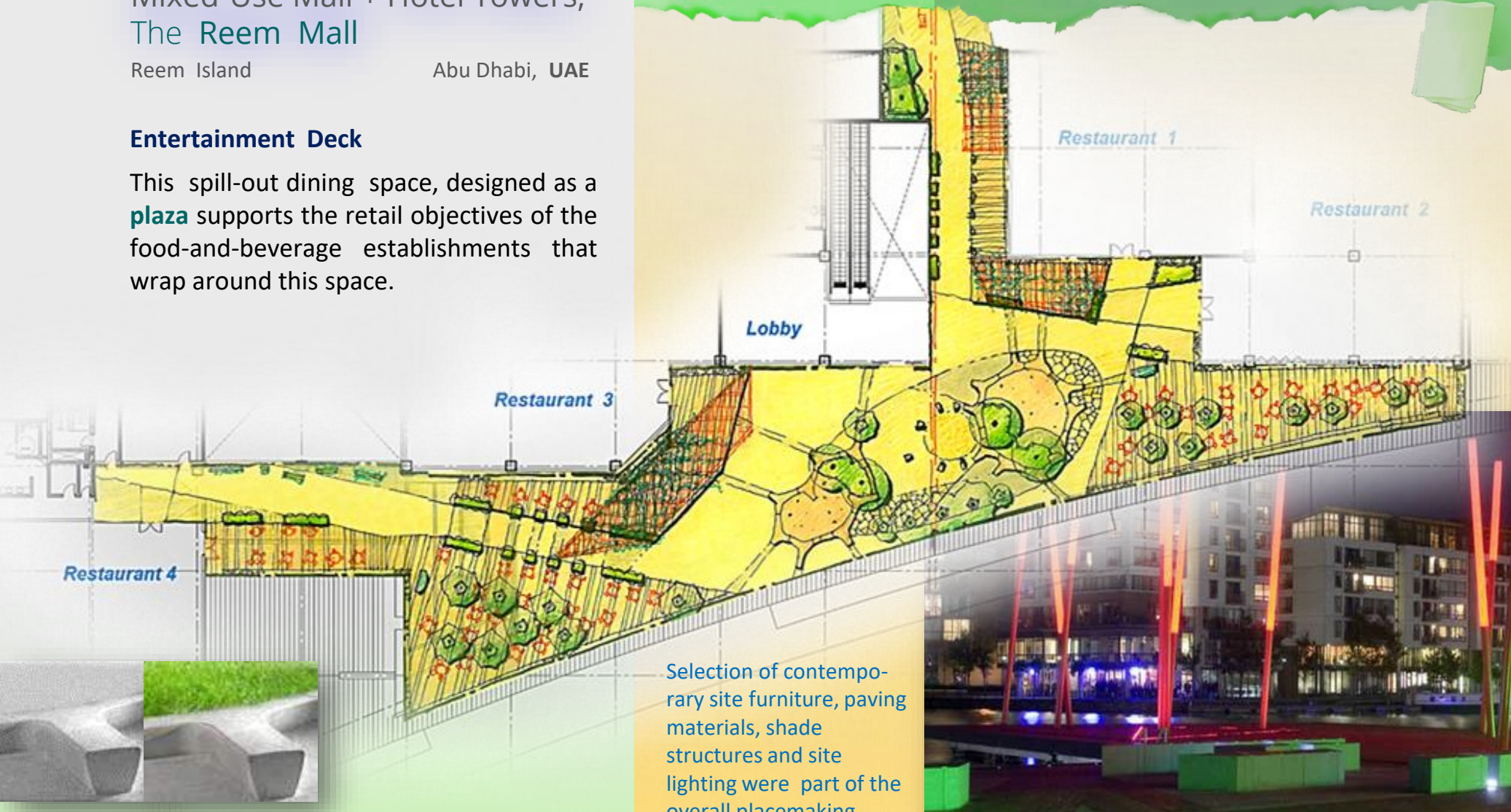
### Mixed-Use Mall + Hotel Towers, The Reem Mall

Reem Island

Abu Dhabi, UAE

#### Entertainment Deck

This spill-out dining space, designed as a **plaza** supports the retail objectives of the food-and-beverage establishments that wrap around this space.



Selection of contemporary site furniture, paving materials, shade structures and site lighting were part of the overall placemaking effort.

Seat Planter Options

Design and Executive Architects KEO International  
Landscape Design Concept Rick A Hilario II lead design while with KEO



## Mixed-Use Office + Residential Towers, The Carina Views

Reem Island

Abu Dhabi, UAE

### Entertainment Deck

This 4-tower development, adjacent to a major mall, shares an entire podium designed as an intensive roofdeck with overlooking views of the marina.

## Design

## Landscape Architecture Mixed-Use Office + Residential



### Waterfront Promenade

The edge to water was designed as a seamless promenade merged with the public realm, folding in Abu Dhabi Municipality's urban design guidelines.

Design and Executive Architects **KEO International**  
Landscape Design Concept **Rick A Hilario II** lead design while with KEO





Office Block,  
**Amiri Diwan Headquarters**  
Amiri Guest Palace Bayan, Kuwait

The facility has a number of **climate-controlled atriums** at groundfloor level, which called for interior plantscaping lending ambience for **coffeeshops and reading libraries**.

Straddling a **7.65-hectare** plot, this office sits above a large basement parking footprint. Much of the ground level space adjacent to the building is a huge **greenroof**.

## Design

## Landscape Architecture Institutional





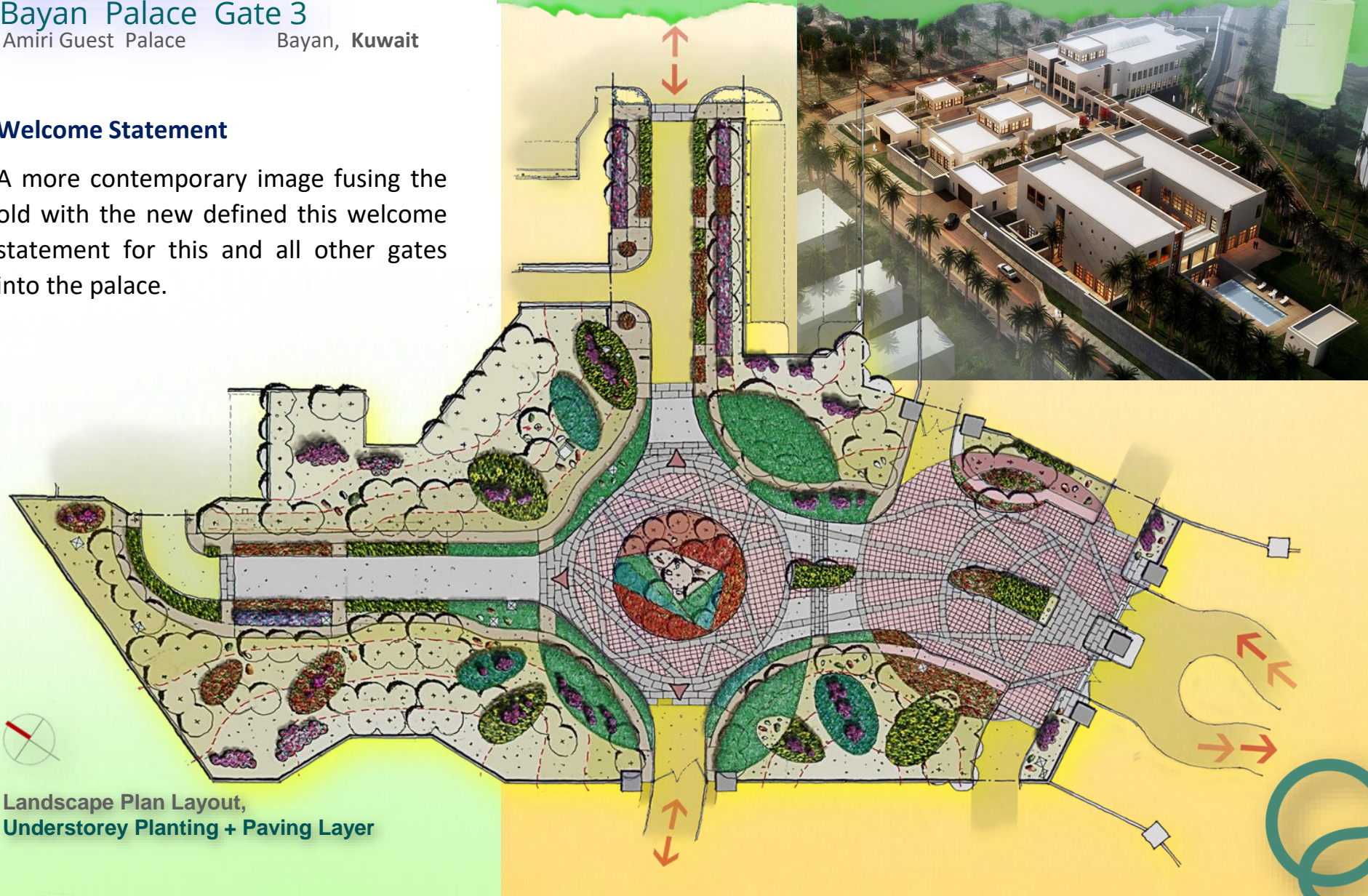
Gateway Entry,  
**Bayan Palace Gate 3**  
Amiri Guest Palace Bayan, Kuwait

**Welcome Statement**

A more contemporary image fusing the old with the new defined this welcome statement for this and all other gates into the palace.

**Design**

**Landscape Architecture**  
Institutional



**Landscape Plan Layout,  
Understorey Planting + Paving Layer**



# Linear Park, Bayan Palace

Amiri Guest Palace Bayan, Kuwait

Design

Landscape Architecture  
Institutional

Due to high-level security restrictions, no on-the-ground images of these installation is available.



Landscape Plan Layout,  
Understorey Planting + Paving Layer

## Guest Amenity

Providing visiting guests and diplomatic dignitaries with secluded and quiet **leisure opportunities** within the palace grounds, this linear park transformed what was once an idle strip of land.





## Linear Park, Bayan Palace

Amiri Guest Palace Bayan, Kuwait

Design

Landscape Architecture  
Institutional

Due to high-level security restrictions, no on-the-ground images of these installation is available.

### Guest Amenity

Providing visiting guests and diplomatic dignitaries with secluded and quiet **leisure opportunities** within the palace grounds, this linear park transformed what was once an idle strip of land.

Landscape Plan Layout,  
Understorey Planting + Paving Layer





## Streetscape Enhancement Highways Northwest of Doha Qatar

### Xeriscape Strategy



Landscape design of typical conditions along the proposed **P10**, **P15** and **P16** highway northwest of the **Doha Urban Area**, as shown across, were formulated.

## Design

## Landscape Architecture Public Realm

### Motorway Interchanges

biased towards a less manicured look, more accepting of native and adapted wildflowers



In advising infrastructure engineers, the design task was to **veer away from the default manicured landscapes** common in the region into more sustainable systems. The visualizations made folded in the **environmental services that wadis perform in annual stormwater management**. The gravelled areas act as **bioswales** to capture surface runoff.

Less lawn footprints for water conservation and stormwater management was recommended strategy.





## Design

## Environmental Art Public Monuments

Public Art Constitution Square  
Bayan Palace Kuwait City, Kuwait

### The Constitution Monument



### Encoded Gematria

The artwork encodes the significant numbers **5**, **11** and **20** which resonate in the geometry of this piece.

**20** | **11** | **5**

20 Constituent  
Assembly  
Members

11 Ministers  
11 Nov 1962

5 Chapters





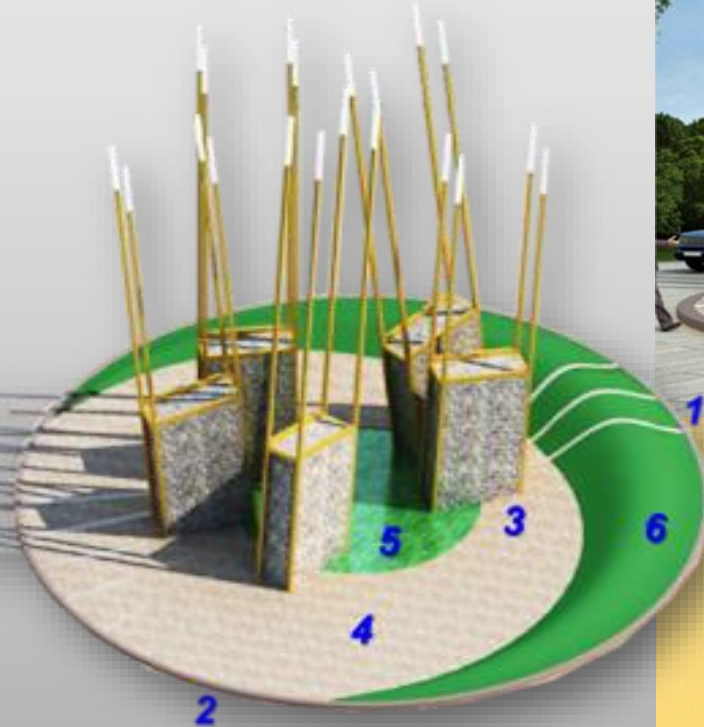
## Design

## Environmental Art Public Monuments

Public Art **Constitution Square**  
Bayan Palace Kuwait City, **Kuwait**

### The **Constitution Monument**

Commemorating the jubilee of Kuwait's adoption of its Constitution, this art installation symbolizes key historic circumstances and Kuwait's maritime heritage.



The stone 'megaliths' stand for the Constitution's five [5] chapters rendered in an assembly of **stone in stacked gabions**, the **lighted masts stand for beacons** : the founding assembly members . The masts also represent the mast of the traditional sea-voyaging **dhow**, a mainstay of Kuwait's maritime heritage.





## Design

## Environmental Art Water Features

### Water Art , Linear Park

Bayan Palace

Kuwait City , Kuwait

#### Art Series

Making up a series of five [5] installations along a Linear Park, these minimalist water art pieces are variants of a single theme, all in an aerodynamic form factor to allow pedestrian cross-traffic to easily move through.

The surfacing materials for these pieces were in various combinations of **glass mosaics**, **natural stone** and **porcelain** cladding.

Uniting the installations was an overarching **paving design** using a mixed format of different paver sizes and colors.

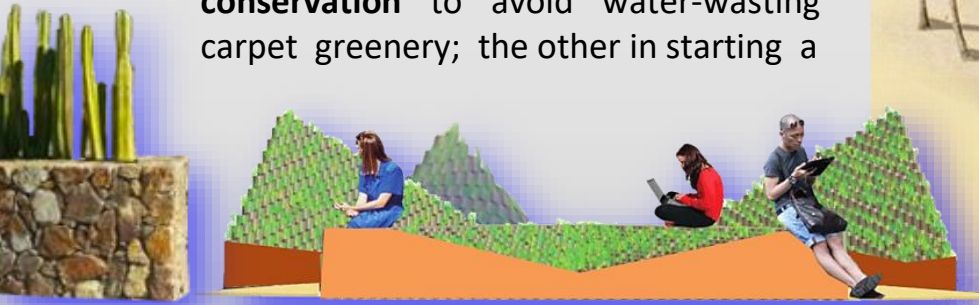




Geo + Earth Art, **Public Realm**  
Parks and Streetscapes **Abu Dhabi, UAE**

### Earth Art in Xeriscapes

Several recommendations for xeriscape schemes in the public realm had been driven by two-fold objectives : one is **conservation** to avoid water-wasting carpet greenery; the other in starting a



Combining **created landforms** as traffic barriers that double up as seating is one bespoke solution.

push towards a **new urban design esthetic**. Our principals have a depth of experience in creatively weaving plant massing that simulate the natural, clumping nature in wadis and sabkhas, and the warm textures of native natural sand and rock formations.

## Design

## Environmental Art Landforms



### The **Naturalist Beauty of Arid-Zone Stormwater Management**

Randomly placed gravel washes along natural or **terra-formed dips and contours** had been recommended to manage seasonal stormwater flows, as no different from the natural cycles in wadis and sabkhas.





Geo + Earth Art, Parks and Streetscapes  
Public Realm  
Abu Dhabi, UAE

### Landforms as Earth Art in Xeriscapes

Using **biomimicry**, planting design can achieve a different esthetic with how patches or clusters of **water-wise adapted vegetation** contrast with the stark naturalism of **desert landforms**.

Understanding the ecology of how plants compete and cooperate for resources, a better expressed landscape



design can be made to fit more with local contexts.

## Design

## Environmental Art Landforms



The key to irrigation success in Operations and Maintenance [O+M] is in grouping or clustering species with **similar water requirements**.

The use of **stone mulches** protects soil from needless sunbaking.





## Design

## Environmental Art Landforms

### Geo + Earth Art, Office Tower SAIF Center

Al Sharq Kuwait City, Kuwait

#### Landforms as Earth Art

Planted berms in the public realm and the tower's **entry plaza** provided the art components for the arrival statement, including the functional vertical axis wind turbines that also generated part of the tower's total energy demand.



#### Kuwait's First Leed-Certified Building

The Sheikh Ahmed Al Sabah International Financial Centre is Kuwait's first LEED-certified facility

clear view of  
tickertape panel  
from  
groundlevel



vertical axis wind  
turbines (VAWT) serve  
as sculptural landmarks  
and **kinetic art pieces**  
that provide  
supplementary  
energy



Design and Executive Architects **KEO International**  
Landscape Design Concept **Rick A Hilario II** lead design while with KEO





Placemaking  
for Better  
Sustainable  
Environments

Land Planners

Landscape Architects

Urban Designers

Place  
Makers

MANILA



HEAD OFFICE

26G Main Avenue  
Cubao, Quezon City 1109  
Metromanila, The Philippines

T +632.7293.0019

M1 +63917.863.0043

E [tap.greenedge@gmail.com](mailto:tap.greenedge@gmail.com)

W [www.greenedgedesign.net](http://www.greenedgedesign.net)