

ELECTRICAL SPECIFICATIONS

THE ELECTRICAL WORK SHALL CONSIST OF ALL LABOR AND MATERIAL TO COMPLETELY INSTALL ALL ELECTRICAL WORK AS SHOWN ON THESE DRAWINGS.

THE ENTIRE INSTALLATION SHALL CONFORM TO THE NATIONAL ELECTRICAL CODE AND ALL STATE AND LOCAL CODES.

THE ENTIRE ELECTRICAL SYSTEM SHALL BE GROUNDED IN ACCORDANCE WITH THE NATIONAL ELECTRICAL CODE.

ELECTRICAL CONTRACTOR SHALL SCHEDULE ALL ELECTRICAL SYSTEM OUTAGES WITH THE OWNER AND GENERAL CONTRACTOR.

ALL MATERIALS AND WORKMANSHIP PROVIDED BY THE ELECTRICAL CONTRACTOR SHALL BE WARRANTED FOR A PERIOD OF ONE YEAR FROM THE DATE OF ACCEPTANCE BY THE OWNER.

CONDUIT SHALL BE EMT OR RIGID OF 1/2" MINIMUM TRADE SIZE. ALL FEEDERS AND CONDUITS BELOW FLOOR SLAB SHALL BE PVC. EMT FITTINGS SHALL BE CAST OF THE SET SCREW TYPE.

ALL WIRE SHALL BE COPPER WITH TYPE THW, THHN, THWN, OR XHHW INSULATION. MC CABLE IN WALLS AND RELOCK ACCEPTABLE.

ALL BOXES SHALL BE PRESSED STEEL, SINGLE PIECE (NON-GANGABLE) TYPE. ALL COVER PLATES SHALL BE EQUAL TO PLASTIC.

ALL COVER PLATES ON ALL DEVICES SHALL HAVE CIRCUIT NUMBERS LABELED ON THE BACK SIDE WITH INDELIBLE INK MARKER.

RECEPTACLES SHALL BE 120 VOLT, 15 AMPERE, P & S 5262-I OR EQUAL BY G.E., HUBBELL OR SIERRA.

SWITCHES SHALL BE IVORY 120/277 VOLT, 20 AMPERE, HUBBELL #1221 I OR EQUAL.

FLUORESCENT FIXTURES SHALL BE AS SCHEDULED OR EQUAL AS MANUFACTURED BY LITHONIA.

FLUORESCENT FIXTURES SHALL BE AS SCHEDULED, OR AS APPROVED PRIOR TO BID BY THE ENGINEER.

FLUORESCENT BALLASTS SHALL BE ADVANCE, KOOL, KOIL, MARK III OR EQUAL BY G.E. OR UNIVERSAL.

PANEL BOARDS, MOTOR STARTERS, SAFETY SWITCHES (HEAVY DUTY), ETC., SHALL BE AS MANUFACTURED BY G.E., SQUARE D, ITE OR WESTINGHOUSE. A TYPED CIRCUIT SCHEDULE SHALL BE PROVIDED IN PANEL.

FLUORESCENT LAMPS SHALL BE OF THE FOUR FOOT RAPID START TYPE, 32 WATTS, WARM LITE DELUXE #F40/D30/SSP AND A LIGHT OUTPUT OF NOT LESS THAN 3050 LUMENS. FLUORESCENT LAMPS SHALL BE AS MANUFACTURED BY SYLVANIA.

FLUORESCENT LAMPS SHALL BE EQUAL TO SYLVANIA DESIGNER 3500K, 34 WATT.

FLUORESCENT LAMPS SHALL BE AS NOTED ON THE FIXTURE SCHEDULE.

ALL EQUIPMENT THAT IS TO BE MOUNTED ON MASONRY WALLS SHALL BE MOUNTED ON UNISTRUT AT LEAST 3/4" FROM WALL.

EXIT LIGHTS SHALL HAVE RED STENCIL FACE AND BE EQUAL TO McPHILBEN #ER40 SERIES.

ELECTRICAL SYMBOL SCHEDULE

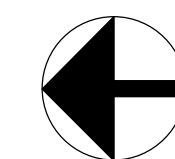
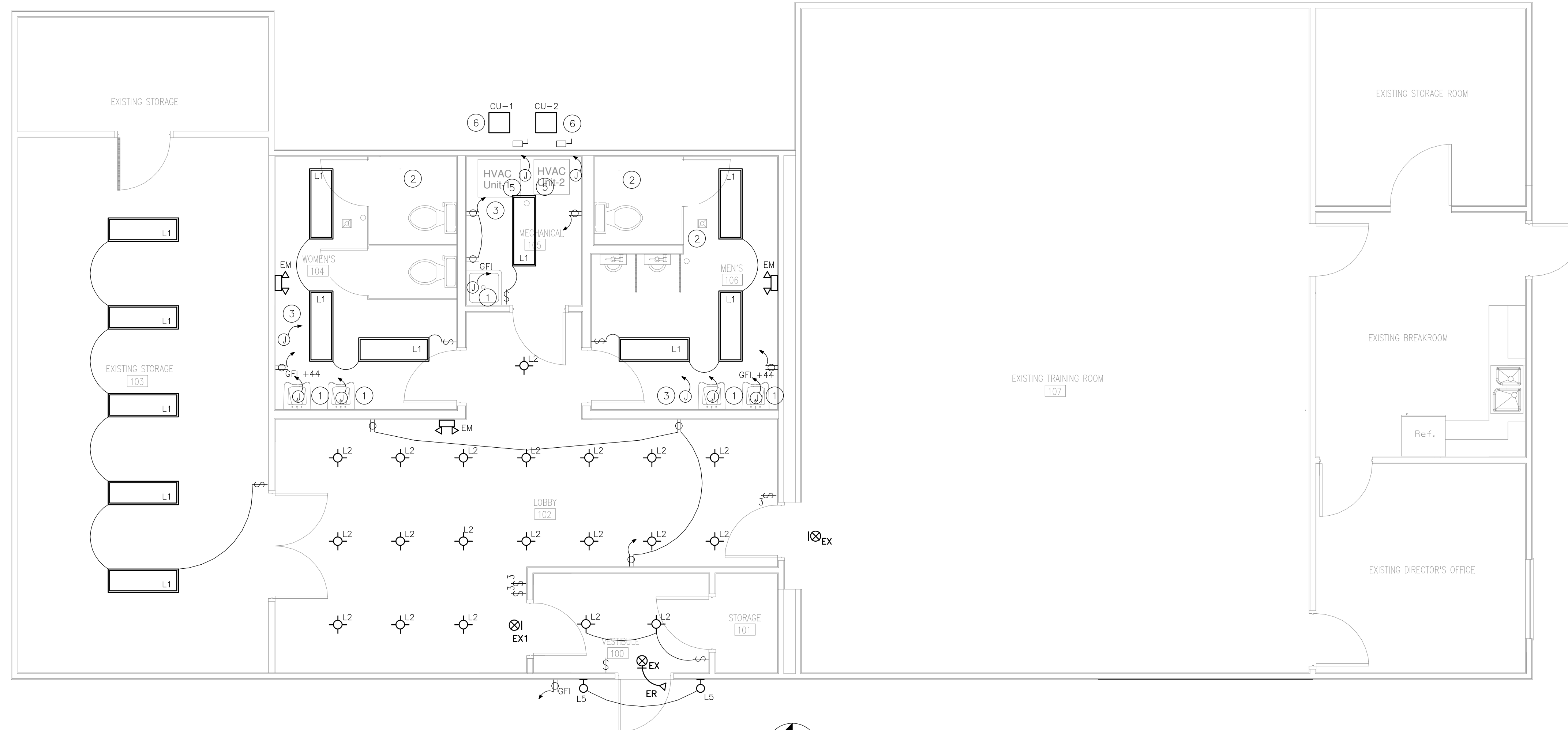
■ SURFACE MOUNTED PANEL	Ⓜ 120/230V RECEPTACLE - R INDICATES AMP RATING	WP INDICATES ITEM TO BE WEATHERPROOFED
■ RECESSED PANEL	Ⓝ 230 VOLT RECEPTACLE - N INDICATES NO. OF POLES, R INDICATES AMPERE RATING	WC INDICATES WATERCOOLER
XX CEILING/SURFACE MOUNTED INCANDESCENT/H.I.D. FIXTURE. XX INDICATES FIXTURE TYPE.	Ⓢ TWISTLOCK RECEPTACLE	Ⓞ CEILING MOUNTED CLOCK
Ⓢ INDICATES SWITCH LEG	◆ SPECIAL RECEPTACLE - SEE DRAWINGS	Ⓞ WALL MOUNTED CLOCK
Ⓢ COMBINATION STARTER, FUSED DISCONNECT NONFUSED DISCONNECT; XX INDICATES AMPERE RATING	Ⓜ 15 AMPERE RECEPTACLE	Ⓞ MAGNETIC DOOR HOLDER
Ⓢ FUSED DISCONNECT; XX INDICATES AMPERE RATING	Ⓜ 20 AMPERE RECEPTACLE WITH ISOLATED GROUND	Ⓞ DOOR MOUNTED SECURITY SWITCH
Ⓢ FUSE SIZE	Ⓜ 20 AMPERE RECEPTACLE	Ⓞ FLUORESCENT FIXTURE, TT INDICATES FIXTURE TYPE, o INDICATES SWITCHING LEG
Ⓢ MAGNETIC STARTER	Ⓜ 20 AMPERE SPLIT WIRED RECEPTACLE	Ⓞ FLUORESCENT FIXTURE, TT INDICATES FIXTURE TYPE, NL INDICATES NIGHT LIGHT
Ⓢ MANUAL STARTER WITH PILOT & THERMAL	Ⓜ 15 AMPERE RECEPTACLE-HORIZONTAL MOUNTED	Ⓞ FLUORESCENT STRIP FIXTURE, TT INDICATES FIXTURE TYPE, o INDICATES SWITCHING LEG
Ⓢ SINGLE POLE SWITCH	Ⓜ 15 AMPERE RECEPTACLE-INSTALL IN OTHER CONTRACTORS EQUIPMENT	Ⓞ WALL MOUNTED EMERGENCY LIGHT: TT INDICATES FIXTURE TYPE
Ⓢ TWO POLE SWITCH	Ⓜ 20 AMPERE RECEPTACLE WITH GROUND FAULT INTERRUPT	Ⓞ WALL MOUNTED EXIT LIGHT WITH ARROW
Ⓢ THREE WAY SWITCH	Ⓜ SURGE SUPPRESSION RECEPTACLE	Ⓞ WALL MOUNTED EXIT LIGHT WITH NO ARROWS
Ⓢ FOUR WAY SWITCH	Ⓜ FIRE ALARM HORN/STROBE - "V" SUBSCRIPT INDICATES VISUAL ONLY	Ⓞ CEILING MOUNTED EXIT LIGHT WITH NO ARROWS
Ⓢ DIMMER SWITCH (600 INDICATES WATTAGE)	Ⓜ MANUAL F.A. FULL STATION	Ⓞ DOME LIGHT
Ⓢ KEY OPERATED SWITCH	Ⓜ SMOKE/FIRE DAMPER	Ⓞ DOME LIGHT (DOUBLE)
Ⓢ MOMENTARY SWITCH	Ⓞ CEILING MOUNTED THERMAL DETECTOR	Ⓞ DENOTES HETS J-BOX W/3/4" C. UP TO CABLE TRAY WITH COAK AS PER SPECIFICATIONS.
Ⓢ LOW VOLTAGE SWITCH	Ⓞ DUCT MOUNTED THERMAL DETECTOR	Ⓞ FLOOR MOUNTED TELEPHONE OUTLET
Ⓢ SWITCH WITH PILOT LIGHT	Ⓞ DUCT MOUNTED SMOKE DETECTOR	Ⓞ WALL MOUNTED TELEPHONE JACK
Ⓢ RED MUSHROOM-HEAD PUSH BUTTON TO OPERATE COIL TO CONTROLLED SECTION OF PANEL MARK "EMERGENCY OFF"	Ⓞ CEILING MOUNTED SMOKE DETECTOR	Ⓞ TELEVISION ANTENNA OUTLET
Ⓢ MOTOR CONTROL CENTER	Ⓞ CEILING MOUNTED LOUDSPEAKER	Ⓞ DENOTES VOLUME CONTROL
Ⓢ ON-OFF PUSHBUTTON WITH PILOT LIGHT	Ⓞ CEILING MOUNTED LOUDSPEAKER WITH VOLUME CONTROL	Ⓞ DATA OUTLET
Ⓢ RELAY	Ⓞ WALL MOUNTED LOUDSPEAKER	Ⓞ DATA OUTLET: "n" DENOTES NUMBER OF CAT 5 AND DATA JACKS
Ⓞ LOW VOLTAGE RELAY	Ⓞ PUSH TO CALL SWITCH	Ⓞ DENOTES VOICE OUTLET
Ⓞ FIRE ALARM BELL	Ⓞ DENOTES INTERCOM SUB-STATION	Ⓞ DENOTES VOICE/DATA OUTLET
Ⓞ STUB CONDUIT UP 4" AND ALLOW 4"-0" OF WIRE FOR CONNECTION	Ⓞ DENOTES MASTER INTERCOM	Ⓞ SEE DETAIL
Ⓞ FLOOR MOUNTED RECEPTACLE	Ⓞ NURSE CALL-PATIENT STATION	Ⓞ SEE DETAIL
Ⓞ CEILING DROP RECEPTACLE	Ⓞ NURSE CALL-EMERGENCY STATION	Ⓞ MOTOR
Ⓞ NORMALLY OPEN CONTACTS	Ⓞ NURSE CALL-STAFF	Ⓞ JUNCTION BOX
Ⓞ NORMALLY CLOSED CONTACTS	Ⓞ NURSE CALL-DUTY	
Ⓞ MICROPHONE JACK		
Ⓞ MICROPHONE OUTPUT		
Ⓞ AUXILIARY INPUT JACK		

FIXTURE SCHEDULE

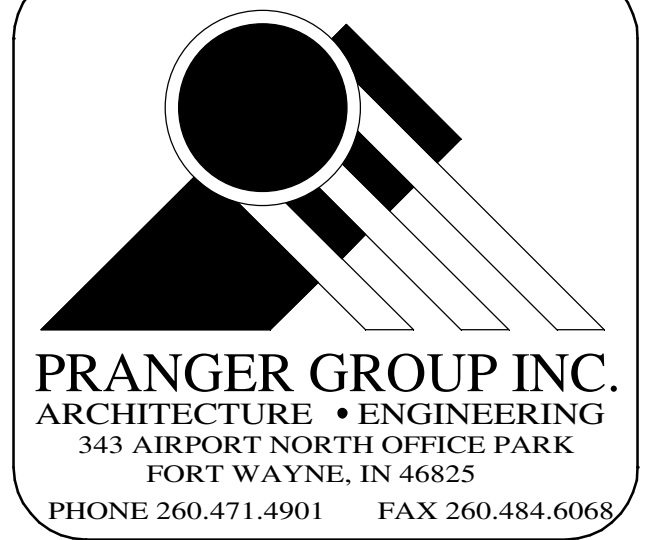
TYPE	COMPANY	MOUNT	LAMPS	DESCRIPTION
L1	METALLUX #4WSNLEDL046HLFUNV840 EQUAL BY LITHONIA	SURFACE	73W 6450L 4000K	120V, SURFACE WRAPAROUND, ACRYLIC LENS
L2	LITHONIA #LDN64020L06ARLD EQUAL BY COOLER	RECESS	22W 2000L 4000K	120V, 6" RECESSED CAN DOWN-LIGHT, CLEAR TRIM, MATTE FINISH
L5	MICORAW-EDISON #ISSAF350LEDE1T3BZ EQUAL BY LITHONIA	WALL	20 3W 2385L 4000K	120V, ISC IMPACT ELITE CYLINDER DARK BRONZE FINISH, TYPE 3
EM	LITHONIA #ELM2-LED-SD EQUAL BY SURELITES	WALL	3W LEDS	WHITE, DUAL HEAD EMERGENCY LIGHT, BATTERY BACKUP, SELF-DIAGNOSTICS
EX	LITHONIA #LOM SERIES EQUAL BY SURELITES	UNIV.	RED LEDS	WHITE, EXIT LIGHT, DUAL EMERGENCY HEADS, SELF DIAGNOSTICS, BATTERY BACKUP WITH OPTION FOR REMOTE HEAD POWER.
ER	LITHONIA #ELA LED EQUAL BY SURELITES	WALL	1W LEDS	1W

SPECIFIC POWER PLAN NOTES

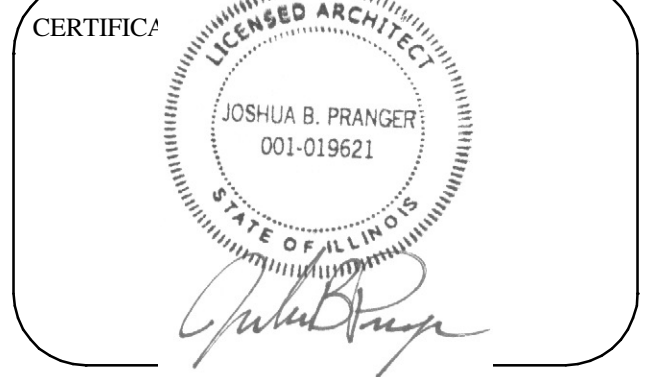
- 1 PROVIDE JUNCTION BOX AND POWER FOR WATER HEATER AS REQUIRED.
- 2 PROVIDE POWER FOR EXHAUST FAN AND INTERLOCK WITH RESTROOM LIGHTING. EXHAUST FANS EXIT THRU ROOF.
- 3 PROVIDE POWER FOR NEW ELECTRIC HAND DRYER. REFER TO SHEET A2-1.
- 4 REPLACE EXISTING WIRING IN WALLS WHERE THE GYPSUM BOARD IS BEING REMOVED AND INSULATION ADDED AND THEN NEW GYPSUM BOARD IS BEING INSTALLED. (SEE NOTE 10 ON SHEET A0-1).
- 5 PROVIDE POWER & SWITCH FOR FURNACE UNITS AS REQUIRED.
- 6 PROVIDE DISCONNECT & WIRING FOR NEW CONDENSING UNITS.



Lighting & Power Plan
SCALE: 1/4" = 1'-0"



Each concept, idea, design, plan and detail as shown on this document is the sole property of Pranger Group Inc. and shall not be used for any purpose without the expressed written consent of Pranger Group Inc. The owner shall have the right to retain copies of this document for information and reference purposes as they pertain only to this project.



Remodel for:
Mobile Law Enforcement Center
3121 Dewitt Avenue
Matttoon, Illinois

REVISION DATE BY
03-22-19 BID SET

DATE PROJECT NO.
03-05-19 5884

SHEET TITLE
Lighting & Power Plan,
Electrical Schedules &
Details

SHEET NO.
E1-1