

# HOSPITAL HOLLOWARE

PRODUCT CATALOGUE



**Hospital Holloware**  
Surgical Tray  
Bed Pan  
Catheter Tray  
**Cidex Tray**  
Dressing Drum  
Kidney Tray  
**Bed Pan**  
Surgical Tray  
Catheter Tray  
Douch Can  
Kidney Tray

# **SALWAN SURGICARE Regd.**

(Specialized Surgical Instruments)

An ISO 9001:2015 & 13485:2016 Certified company

CE Marked, FDA Approved

319, Vardhman Premium Mall, Deepali Chowk, Pitampura, New Delhi-110034

☎ +91- 9811012378    ✉ [salwansurgicare1@hotmail.com](mailto:salwansurgicare1@hotmail.com)



### Surgical Tray with cover, Stainless Steel Seamless

#### Premium

AHW-108	Size 200x150x50 mm (8x6x2 in)
AHW-109	Size 250x200x50 mm (10x8x2 in)
AHW-110	Size 300x250x50 mm (12x10x2 in)
AHW-111	Size 350x250x50 mm (14x10x2 in)
AHW-155	Size 310x195x63 mm (12.5x7.75x2.5 in)
AHW-156	Size 225x125x50 mm (9x5x2 in)

#### Economy

AHWE-104	Size (9x6x2 in)
AHWE-105	Size (8x6x2 in)
AHWE-106	Size (10x8x2 in)
AHWE-107	Size (11x7x2 in)
AHWE-108	Size (12x8x2 in)
AHWE-109	Size (12x10x2 in)
AHWE-110	Size (14x10x2 in)
AHWE-111	Size (15x12x2.5 in)
AHWE-112	Size (18x12x3 in)

	<b>Surgical Tray without cover, Stainless Steel Seamless (Mayo Tray)</b>
AHW-162	Size 480x330x19 mm (19x13x0.75 in)

### Kidney Tray Stainless Steel

#### Premium

AHW-113	Size (150x70x40 mm) 6"
AHW-114	Size (200x90x45 mm) 8"
AHW-115	Size (250x100x52 mm) 10"
AHW-116	Size (300x130x60 mm) 12"
AHW-157	250 X 150 X 40 (Cap. 825 ml) 10"

#### Economy

AHWE-113	6"
AHWE-114	8"
AHWE-115	10"
AHWE-116	12"



### Catheter Tray Stainless Steel

AHW-117	222x82x41 mm (8.5x3.25x1.5 in)
AHWE-117	8x3 in
AHWE-118	17x4 in

### Urinal Stainless Steel (Cap. 700ml) Economy Model

AHW-121	Male
AHW-122	Female



### Bed Pan Stainless Steel

AHWE-121	Perfection without cover
AHWE-122	Perfection with cover
AHWE-123	Male with cover

### Irrigator (Douch Can) Stainless Steel Economy

AHW-128	With Handle, Hook & Nipple 2 Ltr.
AHW-129	With Handle, Hook & Nipple 1.5 Ltr.





#### Spitting Mug with Lid, Stainless Steel

AHW-130 100x50mm (4x2 in)

AHWE-124 100x50mm (4x2 in)

#### Bucket Stainless Steel with Cover, Seamless, Economy

AHW-131 250 mm, 10 in

AHW-132 280 mm, 11 in

AHW-133 300 mm, 12 in



#### Wash Basin Stainless Steel, Heavy

AHW-134 300mm, 12 in

AHW-135 350mm, 14 in

AHW-136 400mm, 16 in

#### Bowl Solution, Stainless Steel

AHW-137 85mm, 3.25 in

AHW-138 100mm, 4 in

AHW-139 120mm, 4.75 in

AHW-140 140mm, 5.5 in

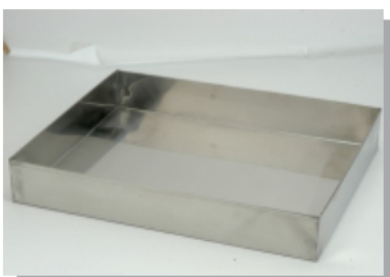
AHW-141 160mm, 6.25 in

AHW-142 180mm, 7 in

AHW-143 200mm, 8 in

AHW-158 125 X 57 (Cap.600ml) half curl open rim

AHW-159 160 X 75 (Cap.1200ml) half curl open rim



#### Baby Tray without cover, Stainless Steel, 500x400x75mm (19.75x15.75x3 in)

AHW-145

#### Cidex Tray with cover, Stainless Steel, 680x180x115mm (27.75x7x4.5 in)

AHW-146



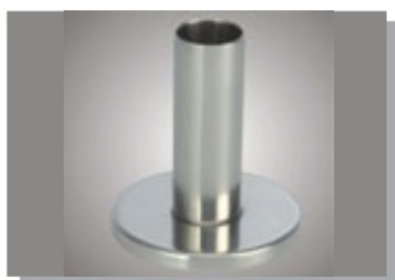


#### Gallipot, Stainless Steel

AHW-147	50ml., without Lid
AHW-148	100ml., without Lid
AHW-149	150ml., with Lid
AHW-150	250ml., with Lid

#### Foreceps Jar Stainless Steel

AHW-151	With Heavy Base, 2x7.25 in
AHW-152	With Heavy Base, 2x7.25 in



#### Thermometer Jar, Stainless Steel

AHW-153

#### Dressing Drum, Stainless Steel

AHW-103	225 X 225 mm (9 x 9 in.)
AHW-104	275 X 240 mm (11 x 9.5 in.)
AHW-105	275 X 125 mm (11 x 5 in.)
AHW-106	350 X 240 mm (14 x 9.5 in.)
AHW-107	350 X 130 mm (14 x 5.2 in.)
AHWE-100	Size 9 x 9 in.
AHWE-101	Size 11 x 9 in.
AHWE-102	Size 14 x 9 in.



#### Miscellaneous Products



Medicine Cup



Iodine Cup



Dustbin



Measuring Jug



Badpan (Plastic)



Forceps Jar  
(Plastic)



Kidney Tray  
(Plastic)



Measuring Jug  
(Plastic)



Urinal Pot  
(Plastic)



Thermometer Jar  
(Plastic)

# SALWAN SURGICARE Regd.

(Specialized Surgical Instruments)

An ISO 9001:2015 & 13485:2016 Certified company

CE Marked, FDA Approved

319, Vardhman Premium Mall, Deepali Chowk, Pitampura, New Delhi-110034

+91- 9811012378    salwansurgicare1@hotmail.com