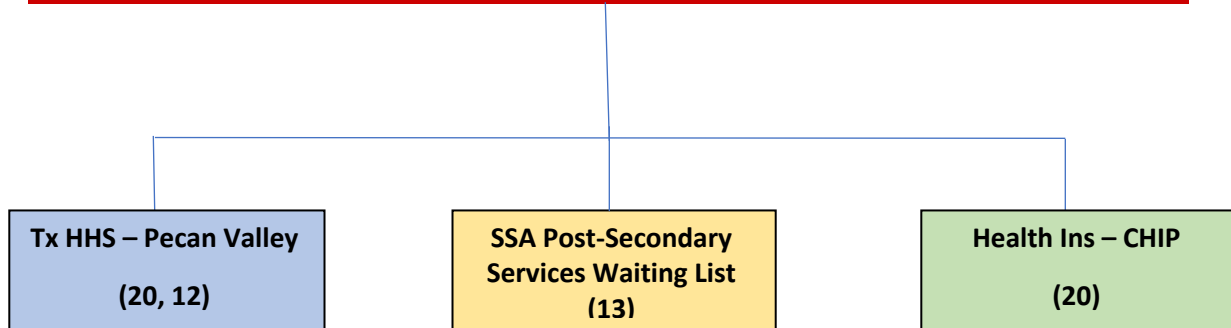


TEXAS SECONDARY TRANSITION PLANNING

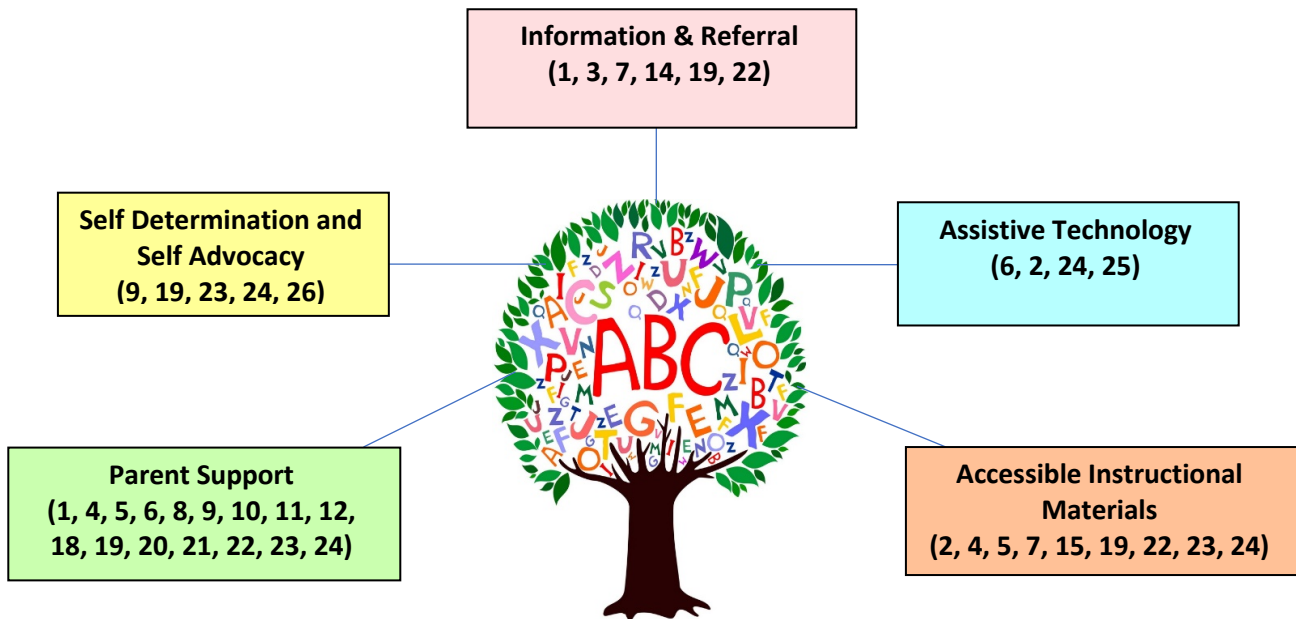


These are recommended resources, services, and activities for students with disabilities as they prepare for life after high school. The numbers in the boxes correspond to the resource list.

ELEMENTARY SCHOOL



Other resources to consider at any time



INFORMATION RESOURCE LIST

<p>(1) 2-1-1 Texas 2-1-1 provides callers with information about and referrals to human services for every day needs and crisis. 877-541-7905 http://www.211texas.org</p>	<p>(10) Navigate Life Texas – Resources, support, inspiration, & links for families of children with disabilities & special health care needs beginning at birth. Locate local resources, etc. https://navigatelifetexas.org</p>	<p>(20) Texas Health & Human Services – provide/coordinate health services for Texans with disabilities & support family members who care for them. Links for CHIP, SNAP, SS, etc. https://hhs.texas.gov</p>
<p>(2) All Blind Children of Texas – Promotes optimal physical, mental, emotional & social development of all blind children. Facilitates participation in programs, activities, events & projects designed by their Teacher of the Visually Impaired (TVI) providing hands-on learning. 512-206-9234 www.abctx.org</p>	<p>(11) Partners Resource Network – Parent Training & Information Centers serving Texas parents of children with disabilities ages 0-26. Individual assistance, workshop & webinars, and access to resources such as printed publications & online courses. 1-800-866-4726 https://prntexas.org</p>	<p>(21) Texas Parent to Parent – Comprehensive state and national resource list for families of children with disabilities listed by categories. List reviewed & edited every 6 months. 866-896-6001 or 512-458-8600 https://www.txp2p.org</p>
<p>(3) Autism Speaks – solutions throughout the life span of those with autism. Access to reliable information & services, increase early childhood screening & interventions, research, transition to adulthood sources. 888-288-4762; Espanol 888-722 9050 texas">https://www.autismspeaks.org>texas</p>	<p>(12) Pecan Valley Centers – provides mental health, developmental, and behavioral services. IDD intake 1-866-948-7198; 817-599-7634; Crisis 1-800-772-5987 www.pecanvalley.org</p>	<p>(22) Texas Project FIRST – preschool program for children ages 3-5. Head Start, Pre-K, Dual-Enrollment -private school at parent’s expense & services through school district. www.texasprojectfirst.org</p>
<p>(4) Brazos River Regional Day School for the Deaf – serves Deaf/Hard of Hearing students from birth -21 yrs. in North Central Texas by providing parent-infant services, itinerant services, audiological services & cluster sites providing specialized instruction for school ages 3-21 yrs. www.brazosriverrdspd.com</p>	<p>(13) Social Security Administration; Social Security Disability Ins. – http://www.ssa.gov http://www.ssa.gov/disability</p>	<p>(23) Texas School for the Blind & Visually Impaired – Austin Birth-22 yrs old students served through an array of programs to transform educational outcomes for students. Support provided through online courses, consultations, publication, and in-person trainings throughout Texas for students who may not attend the school in Austin. Comprehensive school program for ages 6-21, summer programs (June-July) include a variety of enrichment classes. 512-454-8631 www.tsbvi.edu</p>
<p>(5) Crossroads – state and national resources & services for Deaf and Hard of Hearing students & their parents, including summer camps, family retreats, transition, parent liaisons, mentor program, newsletter, organizations, etc. & Spanish resources for communication. Phone 512-462-5329; VP 512-462-5329; Espanol 512-743-7972 www.txssn.org/texasdeafed</p>	<p>(14) SPEDTex Special Education Information Center - Information & resources assist in understanding disabilities, rights & responsibilities under IDEA. Collaboration for development & delivery of services for children in Texas, Child-Find information, advocacy, leadership networks, & video library. 1-855-773-3839 www.spedtex.org</p>	<p>(24) Texas School for the Deaf – school for the Deaf or Hard of Hearing, including those with additional disabilities, for students age 0-21. Students have opportunity to belong in a culture that optimizes individual potential providing accessible language & communication across the curriculum. Located in Austin, Texas. 512-462-5353; VP 512-569-6324. https://www/tsd.state.tx.us</p>
<p>(6) Deaf Action Center – provides means for the Deaf and Hard of Hearing through a variety of programs to ensure advancement through education, economic security, and good health. Services include advocacy, support, telecommunications assistance, CART, housing. Phone 214-521-0407; VP 214-377-1898. https://dactexas.org</p>	<p>(15) Talking Book Program – free library services to qualifying Texans with visual, physical, or reading disabilities. 100,000 titles including some in Spanish, French, German, Russian & other languages. Webinars & trainings. 1-800-252-9605 Fax: 512-936-0685 www.tsl.texas.gov</p>	<p>(25) Texas Technology Access Program - assistive technology availability offering a short-term equip. loan program, demonstration centers, reuse, & low interest bank loan. 800-828-7839 https://techaccess.edb.utexas.edu</p>
<p>(7)) Easter Seals North Texas – from birth, services for outpatient rehabilitation therapy, autism spectrum disorder, fully inclusive pre-school program, & Medicaid waiver case mgmt. 888-617-7171; fax 817-332-7601 https://www.easterseals.com/northtexas</p>	<p>(16) TexasABLE - Tax-advantages savings option for people with disabilities without fear of exceeding Medicaid individual resource limit. https://www.texasable.org</p>	<p>(26) Texas Transition – student centered transition network with resources & monthly newsletter for parents & educators, also. https://www.texastransition.org/</p>
<p>(8) Excel Center Willow Park – short-term, outpatient treatment for adolescents & adults with emotional, behavioral, or substance abuse. https://excelwillowpark.com</p>	<p>(17) Texas A&M Univ Center on Disability Development – PATHS, 2-semester certificate program in Direct Support Professional, Child Care Professional, or Para-Support Professional. 979-845-1256 cdd@tamu.edu</p>	<p>(27) Texas Workforce Commission – provides pre-employment, employment, independent living, & self-sufficiency skills to transition from school to work for students with disabilities age 14-21. 817-598-4880 https://twc.texas.gov</p>
<p>(9) National Alliance on Mental Illness (NAMI) - NAMI Tarrant County (includes Parker Co.) Education & support programs: NAMI Family-to-Family 817-332-6677 http://www.namitarrant.org</p>	<p>(18) Texas Dept of Public Safety – identification card, on-line license manual, driver license testing. 1309 S Bowie Drive, Weatherford, TX 817-599-7631 www.dps.texas.gov</p>	<p>(28) Weatherford College Office of Accommodations & Disabilities – develops accommodation plan to help student succeed in the regular academic life at WC & may include peer tutoring, interpreting for the deaf, note taking, individual test environment. Promotes self-advocacy. 817-598-6350 or 817-598-6459 www.dkahlden@wc.edu</p>
	<p>(19) Texas Education Agency – oversees primary & secondary public education in Texas. Provides families, students & schools with high quality supports to enable students with disabilities to achieve highest outcomes. Links, resources, date, reports & dispute resolution. https://tea.texas.org</p>	