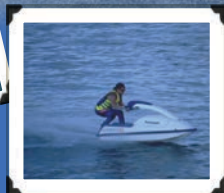


# Minnesota Lake Benton

## Visitor's Guide

2018 Visitor's Guide  
[www.lakebenton.us](http://www.lakebenton.us)



*Make your memories in Lake Benton*

# ADVERTISERS INDEX

## DINING, ENTERTAINMENT AND RECREATION

Benck Lakeview Lodge	20
Benton Fremont/Te Tonka Ha Rendezvous	22
Country House Supper Club	26
Dakota-MN Saddle Horse Holiday	21
Hole-in-the-Mountain Prairie	23
Knotty Pine Supper Club	28
Lake Benton Bar/Dad's Wine & Spirits	26
Lake Benton Opera House	16/17
Laura Ingalls Wilder Pageant	10
Lincoln County Parks	18/19
Lunch Box	25
Renee's Kitchen	25
The Center Post	25
Wooden Diamond B&B	28

## FUEL AND SUPPLIES

CHS	6
ExpressWay	10
Palisades Propane & Oil	25

## GROCERIES

ExpressWay	10
Lake Benton Grocery	10

## INSURANCE, REAL ESTATE, FINANCIAL

Buffalo Ridge State Agency	8
First Security Bank	8
First Security Insurance Services	8
Kinner & Company Ltd	8
Lake Benton Realty	29

## MEDICAL

Avera Medical Group - Tyler/Lake Benton	28
Pipestone Medical Center	12

## MEDIA

Buffalo Ridge Newspapers/Lake Benton Valley Journal	30
Christensen Broadcasting	12

## SERVICES/ORGANIZATIONS

Allete Clean Energy/Windpower	11
City of Lake Benton/City Council	3/4
Churches	6
Heritage Center	9
Interstate Telecommunications (ITC)	10
Lake Benton Area Foundation	7
Lake Benton Area Historical Society	5
Lake Benton EDA	31
Lake Benton Lake Association	13
Lake Benton Library	14
Lake Benton Lions Club	7
Lake Benton Elementary School	13
Lake Benton Sportsmen's Club	5
Lake Benton Storage	13
Lincoln County Enterprise Dev. Corp.	8
Lincoln County HRA	13
Lincoln County Veteran Services	27
Lincoln-Pipestone Rural Water	4
OtterTail Power Company	10
S & E Auto Clinic	22
Southwest Sanitation	29
Western Vet Clinic	21

## SHOPS AND SPECIALTY

Junk Peddlers Paradise	25
Kjergaard Sports	27
Lake Benton Hardware/NAPA	20



# LAKE BENTON CITY COUNCIL WELCOMES YOU!

A warm welcome is extended to each of you and we hope your stay, however long, is enjoyable and rewarding. If we can be of any assistance, please contact the city office at (507) 368-4641, ext. 1.

Lake Benton is a friendly, progressive community and we extend the invitation to have you join us as a resident. To assist those who are contemplating a business venture in the community, we offer the able assistance of the city's Economic Development Authority.

# WELCOME TO LAKE BENTON

**On behalf of the City Council, it is my pleasure to welcome you to the City of Lake Benton.**

Lake Benton is located at the crossroads of US Highway 75 and US Highway 14 in southwestern Minnesota. Whether you are visiting or have chosen to live in Lake Benton, I think you will be surprised at all our little town has to offer. As I was growing up, Lake Benton was called the “Four Season Funland”, because there is always something to do here during every season of the year.

Lake Benton has a variety of activities and conveniences to offer.

- The beautiful lake extends seven miles and covers 2,875 acres. Come and enjoy a day of fishing, waterskiing, swimming, boating or camping.
- “Original Wind Power Capital of the Midwest” – hundreds of wind turbines decorate the landscape surrounding our scenic community. Tours of a locally owned wind tower are available.
- Heritage Museum and Wind Power Learning Center
- Public Library
- Excellent elementary school
- Lake Benton Opera House for fine theatre/entertainment
- The Hole-in-the-Mountain County Park offers camping, hiking, horseback riding trails and a newly renovated Chalet, available for gatherings and entertaining.
- Horse Hill overlooks Lake Benton, as part of the Hole-in-the-Mountain County Park.
- Norwegian Creek County Park offers camping, boat access, playgrounds, beach and picnic areas.
- The Saddle Horse Holiday community celebration is held annually on Father’s Day.
- The Lake Benton Fire Department Street Dance is held annually on Saturday night during Saddle Horse

Holiday weekend.

- Benton Fremont Days / Te Tonka Ha Rendezvous is held annually the first weekend in August at the Hole-in-the-Mountain County Park.
- Lake Benton Grocery for all your food and deli needs.
- The Lunch Box Cafe is open for breakfast and lunch.
- The Country House Supper Club is open for dinner and catering.
- The Lake Benton Bar is open for lunch and dinner, including Dad’s Wine and Spirits off-sale.
- The Center Post offers a large meeting/banquet space.
- Becker’s Resort offers lodging on the lakeshore, plus Renee’s Kitchen, a restaurant/bar for lunch and dinner.
- Benck’s Lakeview Lodge offers lodging, overlooking the lake.
- The Wooden Diamond B&B offers lodging on the east lake shore.
- Delightful specialty and antique shops.
- ExpressWay offers fuel and food for take-out or dine-in.
- Lake Benton Avera Medical Clinic
- Seven beautiful houses of worship.

We are proud of our community and believe you will find that we have much to offer.

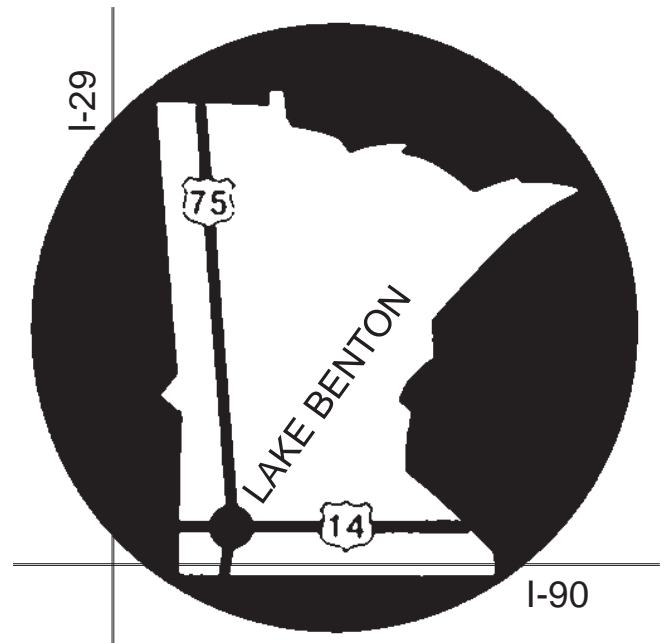
Mayor Bob Worth



## OUR LOCATION

Lake Benton (pop. 684) is located in southwestern Minnesota at the crossroads of U. S. Highways 75 and 14. Our community lies in a scenic valley in southern Lincoln County on the shores of beautiful Lake Benton. The city is located 180 miles southwest of Minneapolis and 28 miles east of Brookings, S.D. The city limits encompass 2,300 acres, making Lake Benton geographically the largest of the county’s five cities.

Lake Benton and its vicinity includes some of the highest elevation points in Minnesota. The area in and around Lake Benton is significantly different from any other city in the county. This is due to the Bemis Moraine, a glacial ridge, which forms the drainage divide between the Missouri and Mississippi River basins.



# NEW RESIDENT INFORMATION

## ELECTRICAL HOOKUP

**Otter Tail Power Co.** - District Office in Morris, 1-800-257-4044

**Lyon-Lincoln Electric Cooperative** - 507-247-5505 or 1-800-927-6276

## WATER/SANITATION SERVICE

**City Office** - 507-368-4641, ext. 1

## TELEPHONE/INTERNET SERVICE

**Interstate Telecommunications Cooperative (ITC)** - District Office/  
Clear Lake, S.D., 605-874-2181 or 1-800-417-8667

## CABLE TV

**Mediacom** - 1-800-332-0245 (Billing); 24-hour service 1-800-422-1473  
(Repair)

**Interstate Telecommunications Cooperative (ITC)** - 800-417-8667

## WEEKLY NEWSPAPER

**Lake Benton Valley Journal** - 120 North Center St., 507-368-4604

## LAKE BENTON AREA CHAMBER OF COMMERCE

106 S Center St., 507-368-9577, ext. 2, lbenton@itctel.com

## LAKE BENTON ECONOMIC DEVELOPMENT AUTHORITY

106 S. Center St., 507-368-4641, ext. 1, benton@itctel.com

## LAKE BENTON CITY OFFICE

106 S. Center St., 507-368-4641, ext. 1, benton@itctel.com  
Open Monday-Friday, 8:00 a.m. - 4:00 p.m.

## CITY PARKS

### Lakeside City Park

N. Highway 75 and west shore of Lake Benton, 507-368-4641, ext. 1  
Shelter house with water and electricity, grills, restrooms, boat ramp,  
fishing pier, handicap-accessible dock and playground equipment.

### West Side Field

Tennis courts, ball diamonds, football field, volleyball courts, shelter  
house with grills and water, restrooms and playground equipment.

## Lincoln-Pipestone Rural Water

415 East Benton St., PO Box 188  
Lake Benton, MN 56149  
(507)368-4248

*Dedicated to bringing you plentiful, pure  
water for today and future generations.*

# SERVICE NUMBERS

## EMERGENCY

**Call 911**

## LAKE BENTON POLICE DEPARTMENT

**507-368-4830**

West Benton St., Lake Benton, MN  
Tony Sievert, Police Chief

## LINCOLN COUNTY SHERIFF'S OFFICE

**507-694-1664**

433 W. Rotherwood, Ivanhoe, MN 56142

## LAKE BENTON FIRE DEPARTMENT

**Call 911**

West Benton St., Lake Benton, MN

## LAKE BENTON FIRST RESPONDERS/ RESCUE UNIT

**Call 911**

## AMBULANCES AND HOSPITALS

Located in Tyler, Ivanhoe, Hendricks and  
Pipestone: Call 911 or check local listings.

## LAKE BENTON COMMUNITY CENTER AND SENIOR DINING

**507-368-9564**

105 West Benton St., Lake Benton, MN

## LAKE BENTON PUBLIC LIBRARY

**507-368-4641, ext. 4**

110 E. Benton St., Lake Benton, MN

## U.S. POST OFFICE

**507-368-4229**

126 E. Benton St., Lake Benton, MN

## LINCOLN COUNTY VETERAN SERVICES

**507-694-1033**

319 N. Rebecca St.  
Ivanhoe, MN 56142

# HISTORICAL SOCIETY

The first meeting of the Lake Benton Area Historical Society was held September 4, 1996. The mission statement of the society is as follows: "The mission of the Lake Benton Area Historical Society shall be the collection, preservation, and dissemination of knowledge about the history of the Lake Benton area and to relate the history to that of the State of Minnesota." The society became a member of the Minnesota Historical Society in May, 1997.

Groundbreaking ceremonies of the "The Heritage and Windpower Learning Center of Southwestern Minnesota" were held June 17, 2000. Dedication of the building was held on October 13, 2001. Our beautiful museum is located at **106 South Center Street, at the Heritage Center in downtown Lake Benton.**

Donation of items unique to the Lake Benton community are gratefully accepted, as well as those that are loaned for special exhibits. Visitors are welcome during regular visiting hours or any time by special appointment. Many groups enjoy our museum and learning center, including school classes and youth groups. Tours are also given to the windpower sites.

Please contact our office for further information at (507) 368-9577 x3. Hours are: 8:00 a.m. to 4:00 p.m.-Monday through Friday. By appointment on Saturday and Sunday. E-mail address: [lbenton@itctel.com](mailto:lbenton@itctel.com)

## Lake Benton Area Historical Society

Non-Profit 501(c)3 ~ Donations Tax Deductible



*Your Donations Help To*

Preserve the Past

Focus on the Present

Enhance the Future

106 S Center St.

PO Box 267

[lbenton@itctel.com](mailto:lbenton@itctel.com)

[www.lakebenton.us](http://www.lakebenton.us)

# SERVICE CLUBS AND ORGANIZATIONS

4-H Clubs (Cross Country, Diamond Lake, Verdi Go-Getters) • Lake Benton Opera House • Farmerettes Extension Club • Henry Sollie American Legion Auxiliary • Henry Sollie American Legion Post #10 • Lake Benton Lake Association • Lake Benton Area Chamber of Commerce • Lake Benton Area Foundation • Lake Benton Area Historical Society • Lake Benton Convention & Visitor Bureau • Lake Benton Economic Development Authority • Lake Benton Fire Department • Lake Benton First Responders/Rescue Squad • Lake Benton Volunteers for Education • Lake Benton Housing and Redevelopment Authority • Lake Benton Sportsmen's Club • Lincoln County Drift Clippers • Lake Benton Lions Club • Sons of the American Legion • Town and Country Study Club • Valley Extension Club • Lake Benton Friends of the Library • Lake Benton Fiber Guild • Lincoln County Veterans Services

## The Lake Benton Sportsmen's Club



*Taking care of our lake and our wildlife.*

The Lake Benton Sportsmen's Club was organized on February 14, 1952. The goal of the organization is to promote good sportsmanship and for the preservation of fish and wildlife.

The Lake Benton Sportsmen's Club has installed and operated the lake aeration system since the fall of 1980. They have also been instrumental in promoting and funding gun training, pheasant feeding, shelter house and fish cleaning facility construction, public access purchase and Al's Landing, lakeshore cleanup, and habitat improvement. They also help fund the indoor shooting range west of Tyler, MN.

The club holds its meetings the fourth Wednesday of the month, September-May, in Lake Benton. The fishing tournament is Jan. 27, 9a.m.-3 p.m., registration at 6 a.m.; Annual game feed is on March 17; and the Annual meeting (oyster stew and ham sandwich feed) is Jan. 13. For membership information call Garret Petersen at 507-368-2075.

# LAKE BENTON CHURCHES



As you overlook the hills to the southwest, you will see a cross on the hill. It was placed there in 1976 during our nation's bicentennial, through the united efforts of an ecumenical committee who wanted to give tribute to our rich religious heritage.

As a visitor, you will be warmly welcomed by whichever church you choose to attend. Each church also has a variety of organizations that would enjoy your presence as well. Just call the church office for information regarding the meeting time.

## FIRST BAPTIST

507-368-4319  
504 Highway Street (N. Hwy. 75)  
Sunday School - 9:30 a.m.  
Sunday Worship - 10:45 a.m. and 7:00 p.m.

## KINGDOM HALL OF JEHOVAH'S WITNESSES

507-368-9365  
E. Highway 14  
Sunday - 10:00 a.m.  
Wednesday - 7:00 p.m.

## LIGHTHOUSE ASSEMBLY OF GOD

507-368-9303  
1966 Cty Rd. 124  
Norwegian Creek Park Road  
Sunday School - 9:30 a.m.  
Sunday Worship - 10:30 a.m.  
Wednesday Bible Study - 7:00 p.m.

## ST. GENEVIEVE CATHOLIC AREA FAITH COMMUNITY

507-368-4232  
119 S. Sherman St.  
Check local listings for times

## ST. JOHN'S EVANGELICAL LUTHERAN (WELS)

507-368-4656  
113 S. Garfield St.  
Sunday School and Sunday Worship - check local listings for times

## UNITED METHODIST

507-368-9395  
104 W. Bluff St.  
Sunday Worship - 8:30 a.m.  
Sunday School - 9:45 a.m.

## GRACE LUTHERAN (ELCA)

507-368-4243  
101 S. Sherman St.  
Sunday School and Sunday Worship - check local listings for times



*Serving Southwest Minnesota*

**1-800-472-8633  
or 507-658-3450**

**www.chsbrandon.com**

The Lake Benton Area Foundation is the one-stop community organization for charitable contributions that benefit our community. It is a permanent resource that provides leadership and financial resources to meet changing community needs, and offers a variety of giving options to help donors meet their unique philanthropic goals. Its volunteer board of directors is connected to the Lake Benton area and understands the issues and opportunities it faces today.

The Lake Benton Area Foundation helps make the community an even greater place to live, work, and play by awarding grants to worthy organizations and projects through its own general endowment. It helps donors achieve their charitable goals and provides the greatest of flexibility by accepting a wide variety of gifts, including cash, stock, property, real estate, retirement plans, and planned gifts. Donors can give to the causes they care most about by giving to existing funds, or creating a new fund within their area of interest.

To receive additional information about the foundation, please contact the following board members: Margo Sik, Vince Robinson, Pam Veire, Mary Caraway, Darcy Miller, Jessica Gums, Mary Carmody and Nikki Prosch.

- We are a local organization with deep roots in the community.
- We are a community leader, committed to coordinating resources to create positive change.
- We multiply the impact of gift dollars by pooling them with other gifts and grants.
- Our donor-advised funds help people invest in the causes they care most about.
- We build endowment funds that benefit the community forever and create personal legacies.
- We offer maximum tax advantage under state and federal law.
- We offer broad expertise regarding community issues and needs.
- We accept a wide variety of assets, and can facilitate even the most complex forms of giving.
- We partner with professional advisors to create highly effective approaches to charitable giving.
- We provide highly personalized service tailored to each individual's charitable and financial interests.



*We offer a variety of gifting tools to help donors achieve their charitable goals. Your gift can be used to support a variety of interests within the Lake Benton community or school... it's your choice! For more information on ways to integrate your financial planning with charitable giving, ask your financial advisor or contact us at (507) 368-4261.*

## LIONS CLUB

Some local citizens saw a need for an organization to serve the Lake Benton community. So, with the help of the Pipestone Lions Club, the Lake Benton Lions came into being. Its purpose was to give sympathy to those in distress, aid to the weak, and substance to the needy, "We Serve" being their watchword. The first official meeting of the Lake Benton Lions Club was held December 17, 1966, with Charles Parsons elected president.

The club has raised funds for their causes in many ways in the past, such as collecting newspapers, selling fish, light bulbs, and mints. The major fund-raiser of the club is now their pancake breakfasts. These are held on the first Sunday of the month, October-March, at the Center Post in Lake Benton (8:30 a.m. to 12:30 p.m.) The club donates 80% of their funds raised to assist local individuals and for various community projects. Some of their community projects of the past and present are: "bicycle day," purchasing playground equipment, athletic/activities banquet, fan of the year award, in addition to donating funds to purchase equipment at

the University of Minnesota Hospital for the sight and hearing wing of the facility.

These are a very dedicated group of individuals who invite you to join their club! They thank you for your past and present support of their pancake feeds.

The Lions meet the second Tuesday of every month at 6:00 p.m. at the Lunch Box Café.



Lake Benton Lions

## PANCAKE DAY

Serving breakfast the  
**first Sunday of each month**  
**October through March**

8:30 a.m. to 12:30 p.m.  
at the Lake Benton Center Post

**Everyone Welcome!**

Proceeds used for Community  
Projects and Services to the Blind.



## QUESTIONS ABOUT INSURANCE?

Stop in and see  
Darcy about

- Medical Insurance
- Medicare Supplement Advantage and Part D Plans
- Homeowners
- Auto
- Commercial Lines
- Farm Insurance



Proud Sponsor of the L.A. Amundson Scholarship Fund



**First Security Insurance Services**  
**Lake Benton** 507-368-4261

Not a deposit; Not FDIC-Insured; Not insured by any federal government agency;  
Not guaranteed by the bank; May go down in value (if it is an investment)

## KINNER & COMPANY LTD

Taxes, QuickBooks and Investments

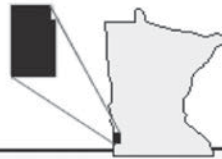


**Results Accountants**

104 Center Street, Lake Benton • 507-368-2711 or 877-542-2711

**Tax Season Office Hours:**

Mon.- Fri. 8:00 a.m. – 5 p.m. • Sat. 8 a.m. - 12 p.m.



**Lincoln County  
Enterprise Development  
Corporation**

*Helping the People of Lincoln County,  
Minnesota Pursue their Business Goals!*

**More than 600 Success Stories Since 1990!**

Visit our web site to learn how  
we can help you get started today.

[www.lincolnterprise.org](http://www.lincolnterprise.org)

*(No Charge for Services – Strict Confidentiality)*

*Providing assistance with*

- ✓ One-on-One Personalized Assistance
- ✓ Business Plan Development
- ✓ Goal Setting
- ✓ Market Research & Analysis
- ✓ Financing Options
- ✓ Loan Packaging
- ✓ Licensing & Permitting Information



**Lincoln County Enterprise  
Development Corporation**

PO Box 46, 402 N. Harold  
Ivanhoe, MN 56142

Toll Free: 800.658.2479

[vince@lincolnterprise.org](mailto:vince@lincolnterprise.org)

# Buffalo Ridge State Agency, Inc.



139 W. Hwy 14, Tyler, MN 56178

507-247-5244

**DON HUGHES – (507) 829-6693**

**JEFF VAN DYKE – (507) 820-2700**

## First Security Bank LAKE BENTON

SERVING YOU  
FOR OVER 100 YEARS!



Let our knowledgeable staff  
help you with all of your  
“FULL SERVICE” Banking Needs.

Proud Sponsor of the L.A. Amundson Scholarship Fund



107 North Center  
Lake Benton, MN 56149

Phone: 507-368-4261  
[www.firstsecuritybanks.com](http://www.firstsecuritybanks.com)

**FDIC**





# THE HERITAGE AND WINDPOWER LEARNING CENTER

The “Heritage and Windpower Learning Center of Southwest Minnesota” is located at 106 South Center Street, Lake Benton. Groundbreaking ceremonies were held on June 17, 2000. Dedication of the Victorian facade building was held on October 13, 2001.

The Heritage and Windpower Learning Center incorporates the



following: City of Lake Benton, Lake Benton Area Chamber of Commerce, Convention and Visitors Bureau, Lake Benton Historical Society, Economic Development Authority, Heritage Museum and Windpower Learning Center.

Please be sure to visit our Heritage and Windpower Learning Center on your next trip to Lake Benton. The building houses a museum with timeline displays and exhibits portraying Lake Benton’s past and present. The museum exhibits are changed often to keep it interesting to return visitors. Also available at the Center are travel brochures from the surrounding areas. Lake Benton souvenirs can be purchased at the Center.

The primary focus of the

Windpower Learning Center is to educate visitors on the numerous benefits that windpower has to offer. Come see the wind turbine model and several interactive computers that provide detailed information on wind energy. These computers will provide insight regarding the latest technology used in producing alternative sources of energy by windpower use.

Tours of the Center, wind turbine sites and area farms are available for groups and school classes. You will be fascinated by the educational experience that awaits you. Please call for appointment or for more information: 507-368-9577x 6. The center is open daily from 8 a.m. to 4 p.m. This is a must-see when visiting Lake Benton.

## HISTORY OF LAKE BENTON

The City of Lake Benton, founded in late 1879, was named after the lake which had been discovered by the exploration of the Nicollet-Fremont party through the Minnesota-Dakota territory in 1838. General John C. Fremont, second in command of the party, named the beautiful body of water “Lake Benton” in honor of his fiancée, Jessie Benton, daughter of a powerful senator from Missouri, Thomas Hart Benton. Official authorization of the municipality by the state legislature was October 24, 1881.

During the summer of 1879, the railroad began west of Tracy, Minnesota. The railroad reached Lake Benton by November of that year. The first lot, sold as a business, was located on the corner where Lake Benton Hardware/NAPA is now located. Within a year, several new businesses were established and Lake Benton became a very active, bustling village.

Lake Benton became the Lincoln County Seat in 1881 after the Village of Marshfield disbanded. In 1901, it was voted to move the county seat from Lake Benton to Ivanhoe. A supreme court judge declared the vote illegal in 1903 and the county seat was returned to Lake Benton. In 1904, it was voted to return the county seat to Ivanhoe where it remains to this day.

Lake Benton has always had the pride and determination to remain successful throughout its colorful history. We are rich in heritage and tradition for excellence. We are dedicated to pursue and expand the vision of our forefathers.

## HISTORIC SITES

Established in 1896, the Historic **Opera House** provides entertainment and theatrical productions by local talent and touring groups throughout most of the year. Pleased patrons come from more than 200 miles away to attend performances each year. Many tour directors include the Opera House at least once as they plan their annual itineraries. There are very few original opera houses left to provide the setting for this unique cultural experience. Recently, it was redecorated and new seats were installed.

The 1896 **Osbeck House** was built by an early Lake Benton merchant and was restored in 1976 by the late Jack Burk, one of the best known antique dealers in the Midwest. He lived in the house, which he furnished with many unique antiques from the Victorian era.

The **Snyder Log Cabin** in Hole-in-the-Mountain Park was the home of early settlers to the area.

Sites of **Major Brown’s 1862 Trading Post** and the Taylor family home are both marked in the north part (horse camp) of Hole-in-the-Mountain Park.

**Burial mounds**, built by the mound builders about 10,000 years ago, are located in Memorial Hill Cemetery.

**The Heritage Center** is open in downtown Lake Benton Monday through Friday from 8 a.m. to 4 p.m.

# LAKE BENTON GROCERY

104 East Benton | Lake Benton, MN | 507-368-4585

**Store Hours: Monday-Saturday  
8:30 a.m. - 6:30 p.m.**



*Walnut Grove, Minnesota*

*41st Annual Laura Ingalls Wilder Pageant*

**July 6-7, 13-14  
20-21, 2018** Outdoor drama for the whole family, based on the life of Laura Ingalls in Walnut Grove. Call 888-859-3102 for tickets

*Laura Ingalls Wilder Museum & INFORMATION CENTER*

330 8th Street • Walnut Grove, MN  
(888) 528-7298 • (507) 859-2358  
lauramuseum@walnutgrove.org

HOURS: June, July, August - Daily 10-6; May & September - Mon-Sat. 10-5; Sun. Noon-5; April & October - Mon-Sat. 10-4; Sun. Noon-4  
Museum Buildings Closed Nov. 1 - March 31; Limited Gift Store Hours November thru March. Please call ahead.

*Family Festival*  
July 7, 14 & 21 • 11 a.m. - 6 p.m.

Walnut Grove City Park  
• Music Performances • Craft & Vendor Show  
• Many Free Children's Activities • Food Vendors

**VENDORS WANTED** - email [wgff@walnutgrove.org](mailto:wgff@walnutgrove.org) for information

**www.walnutgrove.org**

**Stop in and have coffee with us at your one-stop shop!**

**FOOD SHOP**  
Hot Stuff Pizza  
Smash Hit Subs  
Videos • ATM Machine  
Hunting & fishing licenses  
Live bait & tackle  
Sporting goods

**Lake Benton, Hwy 75 & 14 • 507-368-4204**  
[www.expresswaystores.com](http://www.expresswaystores.com)

**OTTER TAIL**  
POWER COMPANY

**www.otpco.com • 800-257-4044**

**Relax - ITC will take care of your Internet**

Speeds up to 100M - local customer service  
Call 1-800-417-8667 or [www.itc-web.com](http://www.itc-web.com)

# WINDPOWER



In 1994, the Minnesota State Legislature ordered 425 megawatts of wind power and 125 megawatts of bio-based energy as down payment on the detailed nuclear phase-out plan proposed by Northern States Power (NSP), now known as Xcel Energy, for storage of 17 nuclear waste dry casks at Prairie Island Nuclear Facility located in Red Wing, Minnesota. From this law, Lake Benton became known as the “Windpower Capital of the Midwest.” As legislation continues to visit the issue of windpower, the number of megawatts continues to rise. As of 2003, Xcel was ordered to produce 825 megawatts of renewable energy.

The second highest point in southwest Minnesota is located just north of the Lake Benton city limits. Lake Benton is located on the Bemis Moraine, more commonly referred to as the Buffalo Ridge. The ridge is a moraine, which is a pile of sediment (silt, sand, gravel and boulders), that were left at the edge of a glacier. There is a 1.6 kilometer-wide break in the moraine in Lake Benton. There are similar, but less spectacular, breaks in the moraine northwest of the city. The Buffalo Ridge provides the most constant wind speed, averaging 15-18 mph. The Buffalo Ridge is approximately 10 miles wide. It begins in northwestern Iowa and stretches about 60 miles through Minnesota and into South Dakota. It is approximately 2,000 feet above sea level. More than 450 wind turbines grace the skyline along the Buffalo Ridge in Lincoln County, Minnesota.

Wind developers from around the world flocked to Lake Benton in hopes to cash in on the new crop. The initial step, Phase I, called for 25 megawatts. Kenetech Windpower was contracted to put up the first 25 megawatts. The first turbines, 73 in all, are known as the “Kenetech Turbines” and are now owned by Florida Power and Light. This was a 28 million dollar project. In 1994, they were the largest turbines in the world, reaching 125 feet in the air, the blades were on average 40 feet long and each turbine produced 360 kilowatts of electricity. This was enough to supply the electrical needs of 125 homes.

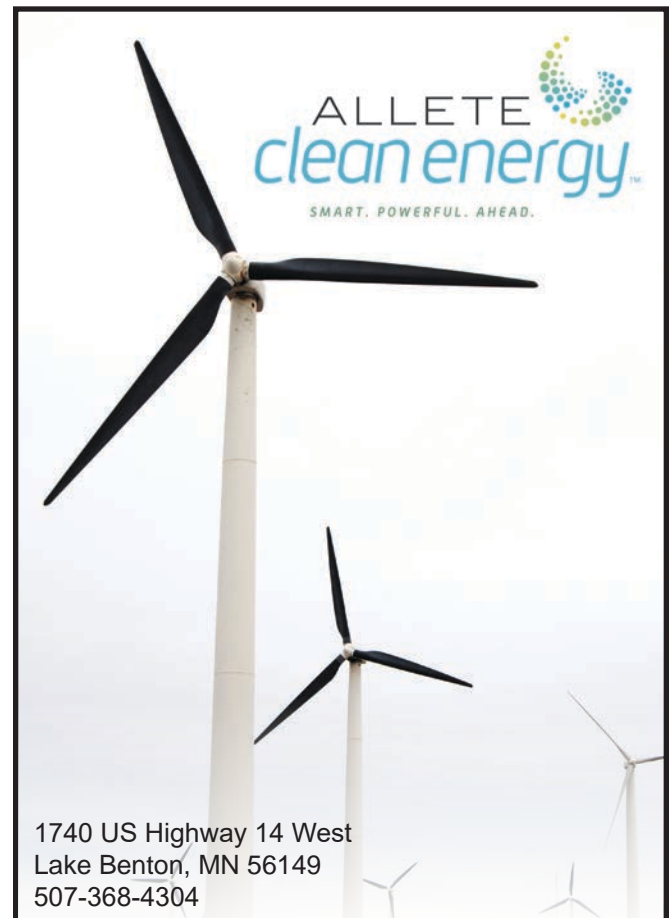
In September, 1996, and in April, 1998, Lake Benton Power Partners, LLC (formerly Zond Minnesota Development Corporation II), now known as AES Wind Generation, signed a contract with Xcel Energy to supply Xcel with 211 megawatts of clean windpower capacity for 25-30 years. These projects became known as Lake Benton I and Lake Benton II. To produce that amount of electricity, it took 291 wind turbines. Each turbine produces 750 kilowatts of electricity, which is enough to supply the electrical needs of 250 homes. Each tower stands on 415 tons of concrete, they are 168 feet tall, and weigh 124,000 pounds (62 tons). The blades measure 76

feet long and make a complete revolution every two to three seconds.

In January of 1999, Xcel Energy was mandated by the Public Utilities Commission (PUC) to double its wind power development in the coming years. The PUC ruled that it was “in the public’s interest” and that additional windpower should be developed. Xcel is now committed to 825 megawatts in its resource plan through the year 2015. The new requirements will produce enough energy to power about 100,000 homes.

The technological advances of the wind turbine have allowed for expansion on the Buffalo Ridge. The next generation of turbines reach up to 400 feet, from base to tip of blade. The blades range from 100-130 feet long. The turbines produce up to 1.8 megawatts of electricity each. Minnesota is in the top 15 states with the greatest wind energy potential, with an estimated 75,000 megawatt potential. That is enough to serve over 25 million people.

Please tour our “Heritage and Windpower Learning Center of Southwest Minnesota” located at **106 South Center Street, at the Heritage Center in downtown Lake Benton.** For further information contact: 507-368-9577 x6. The center is open 8:00 a.m. to 4:00 p.m. daily and by appointment on Saturday.



# EXPERIENCE. TECHNOLOGY. COMPASSION.

*Your Health... Our Priority*



Larry D. Christensen, MD



Brooke N. Harms, DO



Nicholas J. Harms, MD



Bruce W. Kocourek, DO



Michael L. Lastine, MD



Myles F. Zepher, DO



Maricia J. Pronk, PA-C



Cindy A. Sash, PA-C



Heidi M. Thoreson, PA-C



Daniel R. Woldt, PA-C

**507-825-5811**  
**PCMCHHealth.org**

**Pipestone County Medical Center  
& Family Clinic**

**Avera** 

83374



Streaming online 24/7 at

- KISDRadio.com
- KLOHRadio.com
- KJOERadio.com

For Advertising Information

call (507) 825-4282  
or (507) 836-6125

PO Box 456  
Pipestone, MN 56164

ChristensenBroadcasting.com



Like us on Facebook



**KISD**  
OLDIES CHANNEL 98.7 FM



**KLOH**  
BLAZIN' COUNTRY 1050 AM  
AND 99.3 FM



**K-Joe**  
COUNTRY 106.1 FM

# LAKE BENTON LAKE ASSOCIATION



The Lake Benton Lake Association (LBLA) is proud to preserve Lake Benton's history, heritage, natural beauty and environment and to promote the use and enjoyment of the lake for all. As we work together with the local communities, the Lincoln County commissioners, the Lincoln County Environmental office and the Minnesota DNR, we strive to keep Lake Benton weed free. We continue to monitor the health and ecosystem of the lake and to combat invasive weeds like the curly leaf pond weed. In conjunction with weed treatment, the LBLA has implemented a pan-fish stocking program in hopes of promoting more "family fishing fun". Everyone is welcome and encouraged to help protect the beauty and charm of the Lake Benton lake by becoming members of the LBLA. Our 4th Annual Pork Sandwich Fund Raiser and Membership drive will be held Saturday, June 30, 2018 at the Stoney Point Campground. The fundraiser is held indoors, so plan to attend

rain or shine! Please watch for further information as it becomes available. It's not too late to make a donation. Please send any donation amount to LBLA, PO Box 193, Lake Benton, MN 56149. To receive additional information or if you would like to attend our monthly meetings, please contact our President, Sam Hedge at [hedge6360@gmail.com](mailto:hedge6360@gmail.com) or our Vice President, Dean Lueck at [lesliedean@yahoo.com](mailto:lesliedean@yahoo.com).



**LAKE BENTON STORAGE  
UNITS AVAILABLE**

**CALL 368-9300**  
email: [lbstorag@itctel.com](mailto:lbstorag@itctel.com)

**Lincoln County HRA**

*One and two bedroom apartments. Two, three, and four bedroom single family homes, and two and three bedroom duplexes available throughout Lincoln County.*

---

**All incomes ~ All age groups**

---

**Benton Valley Manor**  
Jenifer Vollmer, Director of Housing Services  
106 West Bluff Street  
Lake Benton, MN 56149  
507.368.4600 or 877.484.5844

Equal Housing Opportunity

**Lake Benton  
Elementary School**

The Lake Benton Public School District envisions itself as the school of choice for families wanting their children to reach their full academic, social and extracurricular potential. Lake Benton Public School will accomplish excellence in education through

- Empowering highly qualified staff
- Focusing on individual children's strength
- Fostering high student achievement
- Innovative and Rigorous Curriculum
- Enhancing 21<sup>st</sup> Century Skills

---

**Excellence in Education  
Come Learn With Us!**

Lake Benton ISD #404 | 101 S. Garfield St. | (507) 368-4235  
[www.lakebentonschool.org](http://www.lakebentonschool.org) | Email: [dale.weegman@lb.k12.mn.us](mailto:dale.weegman@lb.k12.mn.us)

# HISTORIC HIGHWAYS

## US HIGHWAY 14

A segment of US Highway 14, from Lake Benton to Mankato, Minnesota, was designated as Laura Ingalls Wilder Historic Highway in 1994. Along the route, you will find signs at the entrance of each town. The towns along this designated route of US Highway 14 have formed a coalition for the purpose of promoting the highway and their individual communities. Each town has identified specific sites that relate to the Ingalls era of the late 1800s. The Ingalls family traveled along this route from Wisconsin to DeSmet, South Dakota, settling for a time at Walnut Grove, Minnesota. "The Laura Ingalls Wilder Guide" will help you find interesting sites and events along US Highway 14, including Lake Benton.

## US HIGHWAY 75

Historically, US Highway 75 was known as the "King of Trails" (KT) before highways were numbered in 1926. The "trail" is marked from Winnipeg, Manitoba, to the Gulf of Mexico at Galveston, Texas. This trail was originally used by the Indians and early pioneers as a trade route. Although the present "KT" does not follow the old "KT" exactly, large segments of the highway include it, while the rest of the highway was constructed nearly parallel to it. A remnant of the original "KT" is still visible today following the railroad tracks south of Lake Benton.

"The International Historic Highway 75 King of Trails Coalition" was incorporated in 2000. The purpose of the organization was for cooperative marketing and for the promotion of the communities along the highway and its corridor. The organization has developed a website: [www.highway75.com](http://www.highway75.com), which provides excellent information about member communities and additional links to those communities listed. The Minnesota Legislature designated US Highway 75 the "Historic King of Trails" in 2001.

Lake Benton Lake is the the second largest freshwater lake on the King of Trails. The community of Lake Benton is very proud of our history and we encourage our community and visitors to discover the "King of Trails."



## LAKE BENTON PUBLIC LIBRARY

The library's history began in 1929 with the Excelsior Federated Women's Club, which had a high interest in education and literacy. The Excelsior club collected more than 200 books and magazines, available opening day. The members took turns tending the library during the original hours, which were from 3-5 pm on Fridays.

The library was originally located above the city Jail, which was in the building next to the Lake Benton Community Center. We moved to our current location in 2007. In 2012 an addition was put on, doubling the space. In 2014, Carl and Joann Burk donated the construction of a patio at the back of the library, in memory of Jack Burk, Carl's brother and Lake Benton advocate

The Lake Benton Public Library has been a part of the Plum Creek Regional Library system for more than 25 years. We work hard to strengthen the relationship between our library

and the regional system to improve service to our patrons. Because we are part of the Plum Creek regional system, patrons have access to free wireless internet, a larger collection of



items, and various special events and programs.

The Lake Benton Public Library has always been proud of its collection. Patrons have access to more than 10,000 collection items, including DVDs, books, audiobooks, cake pans, CDs and other non-print materials in the Lake Benton Public Library. Patrons also have access to more

than 800,000 items within the Plum Creek Regional system and more than 28,000,000 collection items throughout the state of Minnesota.

The library has been an active learning center. The children's programs include Friday Morning Fun hour every Friday from September through April, Summer Reading Program from June through July, Chess Club, and various special programs throughout the year. By the Teens, For the Teens was recently started to increase teen programming and develop the Teen collection. The library also provides adult learning opportunities, with a computer tutor available by appointment on Tuesdays, a monthly adult book club from September through May, an outreach program for homebound community members twice a month, the Winter Reading Program from January through March and various learning opportunities and special events throughout the year.

# RECREATION

## FISHING

Lake Benton Lake is 2,875 acres in area and is the sixth largest lake in southern Minnesota. It is famous for whopper-sized walleye. It is ranked among the 10 best walleye lakes in Minnesota. Several walleye weighing over 10 pounds have been caught in recent years. Two- and three-pound “marble eyes” are common and many are caught that weigh in at the five- to eight-pound range. Blue gill, sunfish, and crappies are abundant and several trophy-sized have been caught. Many of them weigh over a pound and many have been brought in weighing more than two pounds. There are also northern pike and some large mouth bass. Fishermen who return year after year attest to the fact that Lake Benton Lake is one of southwest Minnesota’s favorite angling spots.

## HUNTING

Herds of deer make their home in the wooded hills of Lake Benton. Hunters can bag their deer with little difficulty. The thousands of acres of grassland provide excellent nesting habitat for game birds of all kinds, especially for pheasants. Our lakes and marshes attract many species of waterfowl, including geese and ducks. The bountiful supply of wildlife makes the area around Lake Benton a hunter’s paradise.

## CAMPING

There are two fine county parks available for your camping comfort and enjoyment. **Hole-in-the-Mountain Park** is located on U.S. Highway 14 on the west edge of town. The chalet provides indoor facilities for gatherings in the summer and is used as the warm-up shelter in the winter. It is a popular camping park and many family reunions are held there. The park manager’s office is also located here. **Norwegian Creek Park** is on the north shore of Lake Benton and is only one mile north of town on U.S. Highway 75 and one mile east. There is a swimming beach, a boat-launching area, picnic and shelter house facilities, restrooms, and many camp sites.

## TRAILS

A portion of Hole-in-the-Mountain Park (on the north side of Highway 14) is designated for those who like to bring their horses while camping. Facilities are there to accommodate both the campers and their horses. Horseback riding is fun on the hillside trails.

**Hiking** on the park trails give an opportunity to explore some of the evidences of early pioneer life.

**Snowmobilers** enjoy the open spaces while enjoying our winter wonderland.

## SKIING

**Water skiing** is popular in the summer. A lake that is several miles long gives everyone plenty of room without interfering with other activities on the lake.

**Cross-country skiing** is gaining popularity each winter at Hole-in-the-Mountain Park.

## WINDFARMS

Tour the “Original Windpower Capital of the Midwest” where you will view over 450 wind turbines generating electricity for Xcel Energy.



# LAKE BENTON OPERA HOUSE

In December of 1895, only two weeks after fire had destroyed the original wood frame opera house, a group of citizens formed an association to finance the construction of "a fine new brick structure." When it was finished in late 1896, it was considered one of the finest of its kind in the area, boasting a "spacious" stage, a horseshoe-shaped balcony (which is still one of its most endearing features), private boxes for honored guests, and a gas lighting system. It drew theatrical groups and traveling troupes of performers, and was the locale for school plays and concerts, church and political meetings, and July 4th and Decoration Day observances. Since the seats were movable, it also provided space for dances, card parties, dinners, basketball games, and all manner of community events. Even a few funerals for community leaders were conducted at the opera house. From the 1920s through the early '50s, the Opera House showed movies on a regular basis.

Thereafter, the unoccupied building fell into a state of disrepair, with a devastating hail storm in 1963 dealing a final blow and opening it up to the elements. In 1970, with the building already scheduled for demolition, a group of citizens united in an effort to save it. Restoration has continued for nearly fifty years, always with the goal of retaining as much as possible the original ambience of the beautiful old building. Physical maintenance has included roof repairs, tuckpointing, heating and cooling systems, and lighting and sound improvements from time to time.

Early 2001 saw the accomplishment of the monumental task of installing new seats, and, while the area was empty, the entire interior was repainted. In the fall, the disintegrating outside balcony was restored to its original form. Exterior



painting in Victorian colors brought attention to some lovely, but previously unnoticed, decorative details on the front of the building.

In 1976, the Opera House was incorporated as a non-profit organization "to restore the historical building ... and to promote and sponsor the arts." On March 25, 1977, it was placed on The National Register of Historic Places. In 2002, the companion building next door, also built in 1896, was acquired and intensive restoration of its once-glorious facade began. It provides storage for costumes and sets, and a locale for dressing rooms, rehearsals and board meetings.

The Opera House is open from March until mid-December, with a full and varied program of plays, musicals and sponsored talent.

Much credit goes to the many volunteers who keep the Opera House going and growing, whether in the ongoing preservation of the building, as a board of directors which manages its affairs, as actors, costume, set, and technical people involved in its plays, as ushers and reservationists, or as helpers with the mailings.

## 2018 Board Members

Mark Wilmes - President

Katie Decker - Treasurer

Jodi Greer - Secretary

David Norgaard - Chairman

Milo Downs - Vice Chairman

Anne Lichtsinn - Ticket Manager

Nathaniel Gates - Tech Director

Sandy Hanson - Director

Kathy Holck - Director

Lisa Willert - Director

Alan Riedel - Director

Amy Reese - Director

For tickets call 507-368-4620 from 9 a.m. to 6 p.m. or email [lakebentonoperahouse@gmail.com](mailto:lakebentonoperahouse@gmail.com)

Visit us online at [www.lakebentonoperahouse.org](http://www.lakebentonoperahouse.org)

Find pictures, videos and upcoming events on our Facebook page at [www.facebook.com/lakebentonoperahouse](http://www.facebook.com/lakebentonoperahouse)



# LAKE BENTON OPERA HOUSE



"Beauty and the Beast" - 2017



"The Cemetery Club" - 2017



"Broadway Meets Lake Benton" - 2017



"Secrets of a Soccer Mom" - 2017

## 2018 OPERA HOUSE SCHEDULE

March 17	LB Opera House Season Opener "Broadway Meets Lake Benton"
April 6-8, 13-15	LB Opera House Spring Play "Steel Magnolias"
May 11-13	RTR Spring Play - Lake Benton Opera House
May 28	Memorial Day Services - Lake Benton Opera House
July 26-29, Aug 2-5	Lake Benton Opera House Summer Musical "Footloose"
October 5-7, 12-14	LB Opera House Fall Play "A Little Murder Never Hurt Anybody"
November 17	LB Opera House Children's Theatre
December 1	Lake Benton Opera House Christmas Show

Mark your calendars now for the 2018 summer musical, "Footloose"

For reservations or information, call 507-368-4620 from 9 a.m. to 6 p.m. or write: Lake Benton Opera House, PO Box 1, Lake Benton, MN 56149

Visit us online at [www.lakebentonoperahouse.org](http://www.lakebentonoperahouse.org) or [www.facebook.com/lakebentonoperahouse](https://www.facebook.com/lakebentonoperahouse)

# LINCOLN COUNTY PARKS

## NORWEGIAN CREEK COUNTY PARK

Norwegian Creek is located one mile north, and one mile east of the City of Lake Benton. Norwegian Creek has 92 campsites with electricity and water. Facilities include two picnic shelters, a bathhouse with showers, a fish-cleaning shed, RV dump station, a swimming beach, and two boat launches.

### CAMPING RATES:

Electricity & Water \$25.00 a night

Non-Electric \$20.00 a night

Tents \$18.00 a night

For seasonal rates call 507-368-9350

Rates subject to change.

## PICNIC POINT COUNTY PARK

Picnic Point is located eight miles north, three miles west, and one mile north of Lake Benton. The park is 43 acres located on the southern side of Lake Shaokatan. Picnic Point offers 30 campsites with electricity and water. It also has numerous sites without electricity. Also, Picnic Point has one picnic shelter, a swimming beach, two boat launches, a floating T-dock, a fish cleaning shed, and a RV dump station.

### CAMPING RATES:

Electricity & Water \$25.00 a night

Non-Electric \$20.00 a night

Tents \$18.00 a night

For seasonal rates call 507-368-9350

Rates subject to change.

## HOLE-IN-THE MOUNTAIN COUNTY PARK

Hole-In-The-Mountain Park is located on the western edge of Lake Benton just off Highway 14. There are 33 campsites with electricity and water, and 30 electrical sites located in the horse campground. The park is approximately 800 acres of woodland and prairie land. Throughout the park you will find historical sites along five miles of hiking/horse trails. Hole-In-The-Mountain Park also offers two picnic shelters. The newly renovated chalet can be rented for family reunions, graduation parties, and other functions. Cost is \$100 per day.

### CAMPING RATES:

Electricity & Water \$25.00 a night

Non-Electric \$20.00 a night

Tents \$18.00 a night

For seasonal rates call 507-368-9350



FOR RESERVATIONS CALL 507-368-9350 or write to: Lincoln County Parks, P.O. Box 369, Lake Benton, MN 56149

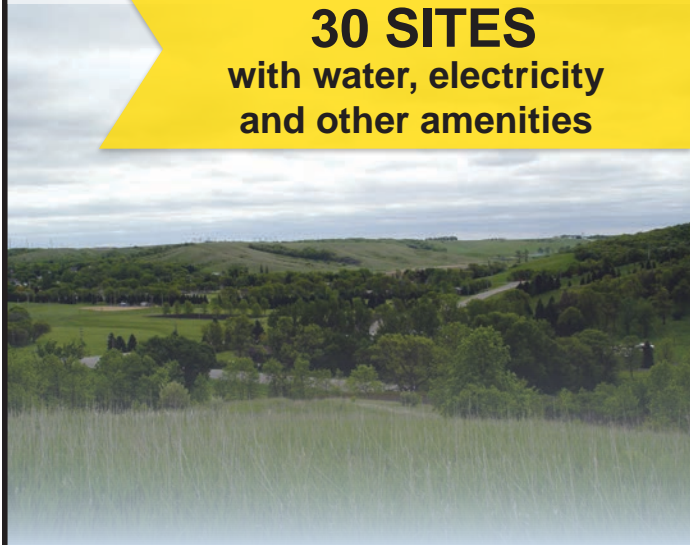


## Hole-in-the-Mountain Park and Horse Camp

Hole in the Mountain Horse Camp features

**30 SITES**  
with water, electricity  
and other amenities

The view from the horse camp is spectacular. The camp has five to seven miles of trails, electrical hookups, showers and restrooms. Protected by trees, high atop the hills, this is a calm, relaxing atmosphere for both campers and animals.



# Benck Lakeview Lodge

New Ownership in 2017

Chad and Tami Benck

605 Highway 75 North | Lake Benton, MN 56149  
(just north of Lake Benton on Hwy 75)

Telephone (507)368-2585 | email: irelandwall101@hotmail.com  
Facebook: Bencks

Open year-round and located on the west shore of Lake Benton Lake.

Call Chad or Tami for more information.

Check out our Facebook page!



## **WE HAVE IT ALL — FROM HAMMERS AND DRILLS TO A GIFT SHOP WITH ALL THE FRILLS!**

HOME OF  
VALSPAR PAINTS



Housewares • Appliances  
Giftware • Bicycles  
Lawn Mowers • Snow Blowers  
Window and Screen Repair  
Farm Parts  
Hydraulic Hose Making

Parts, accessories and  
tools in stock for:

Auto • Fleet • Agricultural  
Industrial • Small Engines • Marine  
(Overnight delivery available on items not in stock)

## **Lake Benton Hardware / NAPA Auto Parts Lake Benton Parts House**

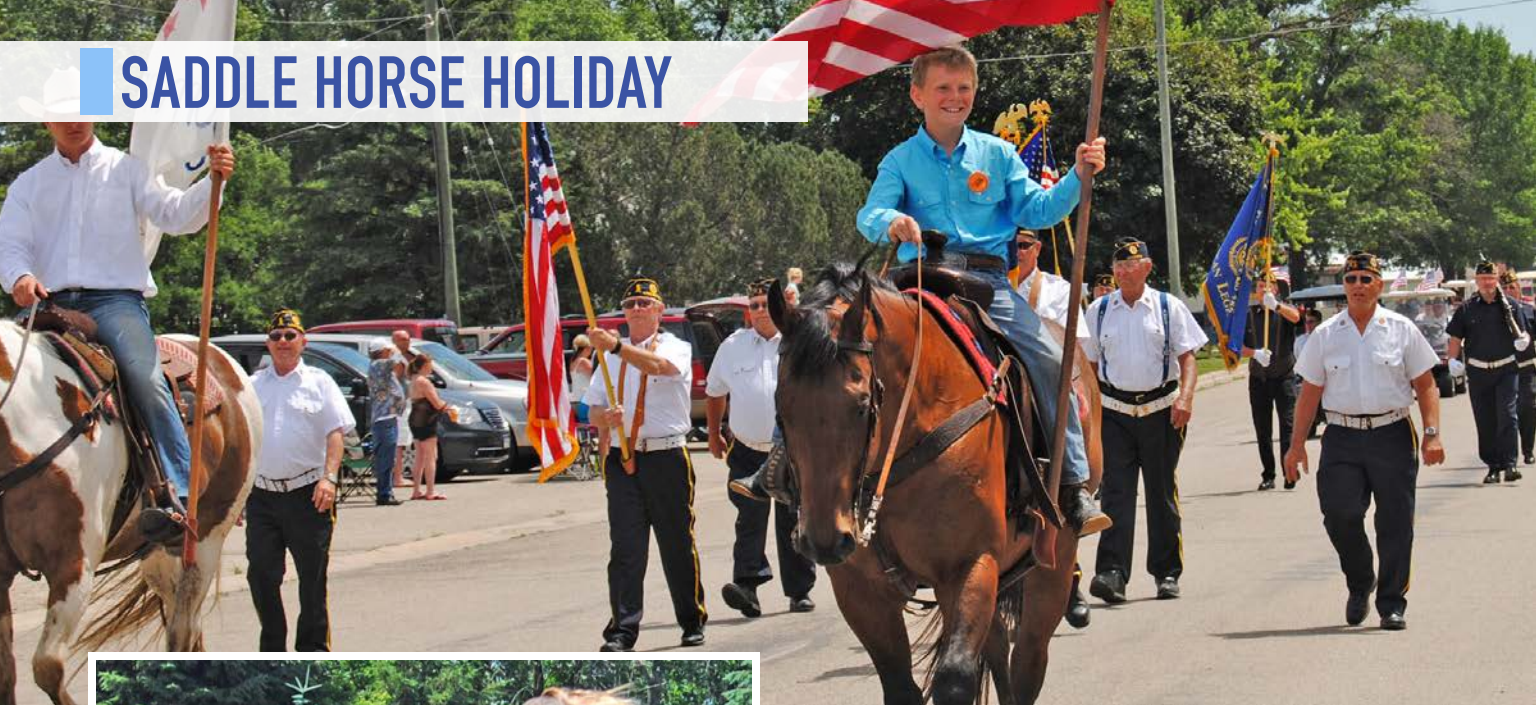
Gary and Shirl Serie, Owners

101 N. Center St., Lake Benton, MN

Phone: (507) 368-4283 • Fax: 507-368-9597 • 1-800-252-9602



# SADDLE HORSE HOLIDAY



The organizational meeting of the Dakota-Minnesota Saddle Horse Holiday was held at the Lorenzen Cafe in Lake Benton on March 23, 1947. Over the past years, the event has grown to include as many as eight hundred horses and a two-ring horse show that is held annually on the third Sunday of June.

The day begins with a trail ride at 10:00 a.m. The scenic trail takes the riders through our beautiful rolling hills and concludes at the parade route. The horses are an ever popular addition to our annual parade which takes place at noon. Our parade has also grown to include as many as 100+ units. The show begins at 1:00 p.m. at the arena, located at Horse Hill at the Hole-in-the-Mountain Park in Lake Benton. There are over thirty classes and games/contests that take place with trophies and ribbons awarded. Please join us for a day of fun and excitement! There is something for everyone.

Please contact: Mike Hauswedell 507-487-5736 or Lori Hart 605-542-4991 or 507-247-3401 for further information regarding the horse show and trail ride. Please contact Janel Steufen at 507-368-4261 regarding the parade.

## Western Veterinary Clinic

4 miles east of Lake Benton  
on Highway 14



1495 Cty. Hwy. 6  
Tyler, MN 56178  
Phone: 507-247-5410  
Phone: 507-368-4251



Veterinarians:  
Dr. Loren Johnson  
Dr. Roxanne Nielsen  
Dr. Cassy Griebel

72<sup>nd</sup> ANNUAL

## SADDLE HORSE HOLIDAY

JUNE - FATHER'S DAY WEEKEND

10:00 Trail Ride | 12:00 Noon Parade  
1:00 Two-ring Horse Show

For more information contact:

Mike Hauswedell, 507-487-5736 or  
Lori Hart, 605-542-4991 or 507-247-3401

Dakota-Minnesota Saddle Horse Holiday Committee  
Box 303, Lake Benton, MN 56149

# BENTON-FREMONT DAYS/TE TONKA HA RENDEZVOUS



Come celebrate the 20<sup>th</sup> Annual Benton-Fremont Days/Te Tonka Ha Rendezvous on August 3, 4, and 5, 2018. Go back in time when Minnesota was part of the Dakota Territory and the early explorers, Nicollet and John C. Fremont first came to the “Hole-in-the-Mountain” in 1879. The annual celebration will be held at Hole-in-the-Mountain Park, in Lake Benton, bringing re-enactors from the surrounding area to celebrate history as it once was in this part of the early fur trade and building of the American nation.

This year’s Benton-Fremont/TeTonka Ha weekend will not only entertain you, but will bring Lake Benton’s history alive, by featuring a variety of historical, educational, and fun activities for the entire family. Some of the events include; Black

Powder Shooters, Hawk and Knife demonstrations, cannon shoot, Native American singing and dancing, pottery and spinning/weaving demonstrations, Patrick’s Chuckwagon, the Fur Traders Campsite, children’s games and outdoor worship on Sunday morning. The event will also feature the 6th annual TaTonka Knap-In and the Pickers Paradise.

Exceptional entertainment will be provided by the Swanson Family, the Rolling Family, Ron & Jane Cote and a variety of other entertainers.

Remember that food will be available throughout the weekend with a freewill corn boil on Saturday and Sunday, plus with the purchase of a \$5.00 sweepstakes ticket you get a free bowl of Te Tonka Ha’s world famous buffalo stew and corn bread.

Come and enjoy the weekend sponsored by the Lake Benton

Chamber of Commerce and the Lake Benton Area Historical Society. This event is free and open to the public offering a fun-filled educational and entertaining weekend. For more information about Benton-Fremont/Te Tonka Ha contact Dave at 605-693-4589, Marc Widmark at 507-275-3655, or the Lake Benton Chamber office at 507-368-9577 x2 or email: lbenton@itctel.com.

20<sup>th</sup> ANNUAL  
**BENTON-FREMONT DAYS**



HISTORIC  
**TE TONKA HA RENDEZVOUS**

**August 3, 4, 5**  
Hole-in-the-Mountain Park  
Lake Benton, MN

**6<sup>TH</sup> ANNUAL TATONKA  
KNAP-IN AND PICKERS PARADISE**

**MUZZLELOADING SHOOT — HAWK AND KNIFE CONTESTS**

Public Welcome

## S & E Auto Clinic

**Auto Repair**  
Scott Christensen

507-368-9288 Shop  
507-368-9357 Home

Located Downtown  
Lake Benton, MN 56149



# THE HOLE-IN-THE-MOUNTAIN PRAIRIE

The Hole-in-the-Mountain Prairie is an 1,157-acre prairie and oak savanna wildlife preserve located south of Lake Benton along Highway 75. The preserve is part of a larger glacial escarpment that runs from southwest Minnesota through northeast South Dakota. Locally, this hilly region is known as Buffalo Ridge.

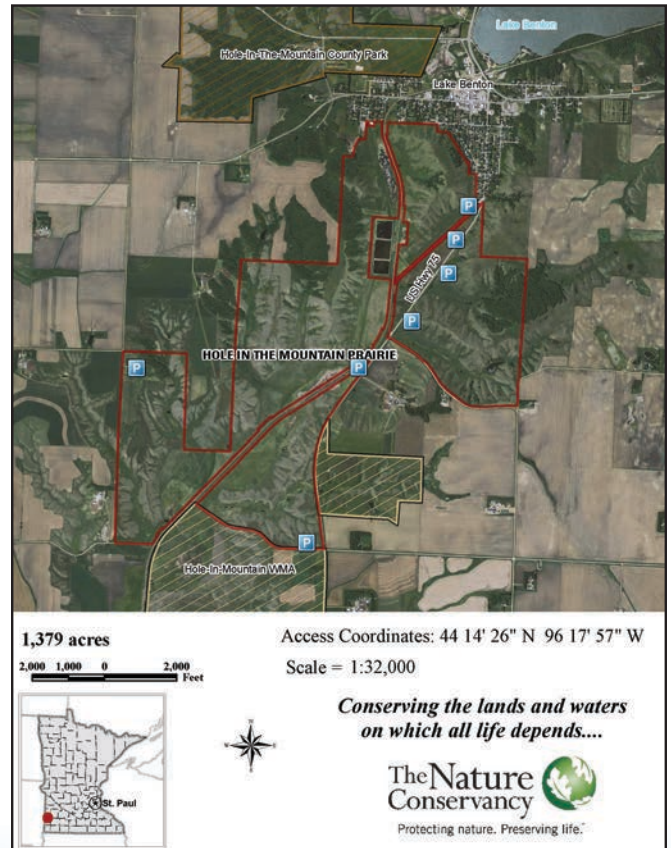
Its undulating terrain is carpeted in wildflowers and alive with birds and butterflies during summer. The preserve provides excellent habitat for rare prairie-dependent insects (including 25 species of butterflies), nesting waterfowl, passerines, raptors, and other grassland birds.

The Nature Conservancy encourages you to visit the preserve. We also strive to maintain as natural a setting as possible while minimizing wildlife disturbance. The preserve is open during daylight hours for hiking, birdwatching, photography, and any other non-consumptive uses. We remind you that access is walk-in only (no horses, mountain bikes, ATVs, or pets) from the roads around the preserve. Vehicles can be parked near the main sign near the railroad, one mile south of Lake Benton along Highway 75 or on the edge of the gravel road on the south side of the preserve. Removal of plants, animals, or any natural materials is prohibited. If you pack it in, please pack it out!

The preserve harbors more than 60 species of grasses, sedges, and rushes, 10 species of trees and shrubs and 200 species of wildflowers. Native plants include six of special concern: prairie moonwort, small-leaved pussytoes, small white lady's slipper, red threeawn, soft goldenrod, and slender milk-vetch.

Most unique to Hole-in-the Mountain are its butterflies, thriving on the native grasses and forbs protected here: The Dakota skipper and Ottoe skipper, both threatened species; and the Uncas skipper (*Hesperia uncas*), an endangered species. Visitors may also catch glimpses of a suite of prairie birds, mammals, and other insects including badger, coyote, white-tailed deer, wild turkey, red-tailed hawk, meadowlark, and bobolink.

The prairie valley is the headwaters of Flandreau Creek, which runs in a southwesterly direction toward the



Big Sioux River. Indians called the half-mile-wide valley “Mountain Pass” or “Hole-in-the-Mountain.” This preserve is owned and operated by The Nature Conservancy as part of a larger project that strives to enhance habitat across the Prairie Coteau region of Minnesota and South Dakota by working to protect native rangelands and wildlife through sound habitat management while working in partnership with the farmers, ranchers, and public agencies who share our interest in preserving this incredible landscape. Hole-In-The-Mountain Preserve represents in full beauty what the southern end of the larger 2.4-million-acre Prairie Coteau region might have looked like prior to European settlement.

# LAKE BENTON LAKE



Lake Benton Lake: one of the most popular lakes in southern Minnesota.

It's no wonder Lake Benton Lake is so well known. This famous lake has an area of 2,875 acres, making it the sixth largest lake in southern Minnesota. Fishermen from throughout the upper Midwest come the year around to catch game fish, including walleye, northern pike, and large mouth bass. Pan fishermen enjoy catching beautiful yellow perch, crappies, bluegills, and bullheads.

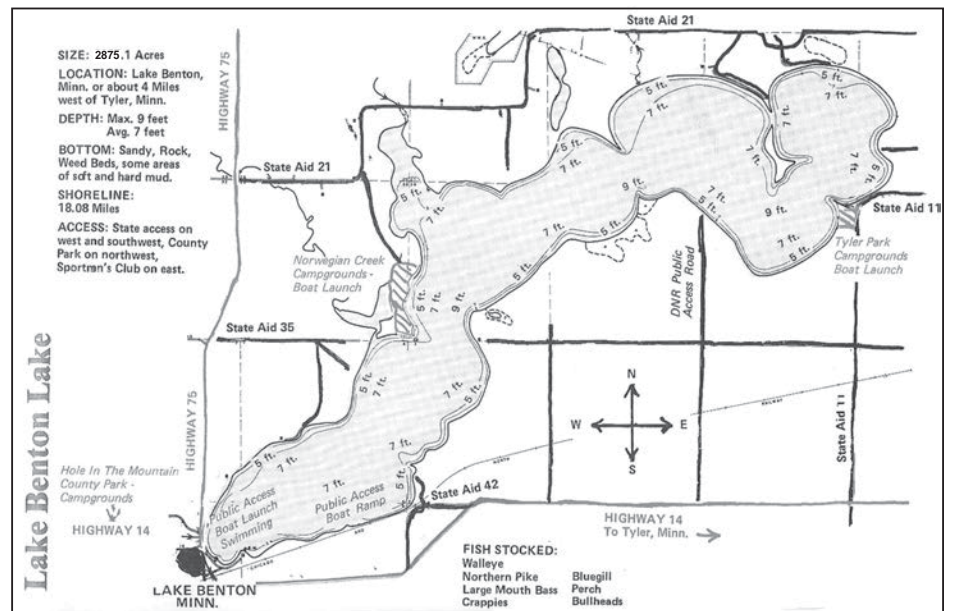
Fishermen can be seen daily on the lake, in their boats and shore fishing, as they enjoy the peaceful and relaxing atmosphere of a pleasant summer day. In the winter a "little town" appears as the ice fishermen arrive with their unique houses. The aeration system, maintained by our local Sportsmen's Club, prevents any winter-kill of fish. The fertility of this prairie lake provides the nutrients needed to produce fish that are above average in size and numbers. Many trophy walleye that are caught range from eight to twelve pounds. Walleye weighing two to four lbs. are common. Many perch are over one pound and many exceed two pounds in size.

The DNR stocks the lake with more than two million walleye fry every two years. This is in addition to those

produced in the lake itself.

Fishermen aren't the only ones who enjoy the lake. Boating and water skiing are always popular in the summertime. Swimmers gather at the beaches for a day in the sun. In the winter, for a cure of the winter blues, snowmobiling is a fun sport.

The Lake Benton Lake Association is continually involved in projects to improve the water quality of the lake. They realize that a good lake is not only an asset to the residents who live on the lake, but it is also an economic asset to the local economy as well.





## DINING

### LUNCH BOX CAFÉ

Located at 116 Center Street, Lake Benton. Enjoy home style cooking for your breakfast and lunch meals. (507-368-3400)

### THE CENTER POST

For large banquet or meeting events, contact The Center Post, located on South Center Street in downtown Lake Benton. The Center Post has facilities available to rent for meetings, banquets or receptions. In house catering services are also available. (507-368-9387)

### COUNTRY HOUSE

Located on East Highway 14, Lake Benton. Enjoy fine dining by indulging in a mouth watering four-course meal or dine casually in the lower level. They also offer catering, take out, bus and tour group packages, or book your next meeting. Children's menu on both levels. (507-368-4223)

### KNOTTY PINE SUPPER CLUB

Located near Elkton, SD. The Knotty Pine offers a gourmet menu, specializing in their well-known prime rib and garlic mashed potatoes. Their sports bar is a great place to watch the games with your friends, with prizes, specials and treats during the games. They also offer a party room for special occasions. (507-548-3781 or 1-800-442-7977)

### LAKE BENTON BAR AND

### DAD'S WINE & SPIRITS

Offers a large wine selection, along with off-sale beer and liquor sales. The on-sale bar side has a wide range of flavors, sure to please anyone's taste. Watch the game on the big screen TVs, or take on your friends with a game of pool or darts. The facility also offers delicious pizzas, sandwiches, baskets, appetizers and fresh popcorn to satisfy your appetite. (507-368-4507)

### RENEE'S KITCHEN

Located at Becker's Resort. Delicious sit down and take-out pizza, sandwiches, quesadillas and buffet meals. (507-368-4399)

### EXPRESSWAY

Located on US Highway 75, Lake Benton. The ExpressWay features Hot Stuff Pizza, Smash Hit Subs and many other delicious sandwiches and goodies. They also offer many convenience grocery items and video rentals. (507-368-4204)

## Lunch Box



Breakfast | Lunch | Takeout

Mon.-Fri. – 7:00 a.m.-1:30 p.m.  
(Dec.-March) – 7:30 a.m.-1:15 p.m.

Saturday – 7:30 a.m.-11:00 a.m.  
(Dec.-March) – Call

507-368-3400 • 116 N. Center Street, Lake Benton, MN

## Junk Peddlers Paradise

**Michelle L. Sanow**  
Owner

107 E. Benton Street  
Lake Benton, MN 56149  
sanowmichelle@yahoo.com

507-530-9220



## Make the Switch!

- PROPANE & OIL DELIVERY SERVICE
- FREE TANK SWITCH OUT
- NO TANK RENT/LEASE FEE
- MULTIPLE CONTRACT OPTIONS
- UHAUL RENTALS



**Palisades Oil & Propane**

Call today!

605-594-3465

25353 485th Ave | Garretson, SD

Palisades offers beer,  
liquor, food, and a full kitchen menu

# COUNTRY HOUSE Restaurant & Catering

Casual Family Dining | Take out | Cocktails

Private Party Room | Private Groups by Reservation

Steaks | Seafood | Broasted Chicken | Sandwiches



**OUR 36<sup>TH</sup> YEAR OF SERVING YOU!**

Open at 5:00 p.m., Thursday - Sunday

Catering in southeast South Dakota  
and southwest Minnesota

East Hwy. 14, Lake Benton, MN

Email: [aschwing@mchsi.com](mailto:aschwing@mchsi.com)

Phone: 507-368-4223 | Cell: 507-829-4843



*Get your fun on!*

## Serving Meals!

Pizza, Baskets, Sandwiches,  
Burgers and Appetizers

11 a.m. - 11 p.m. Monday-Saturday

11 a.m. - 6 p.m. Sunday

Take Out — Call 507-368-4507

Daily Noon Specials

Nightly Specials

## Happy Hour

Monday-Friday 5-7 p.m.

# Lake Benton Bar and Dad's Wine & Spirits

114 North Center Street, Lake Benton | 507-368-4507

Like us on Facebook to check out our upcoming events and daily specials! Keywords: Lake Benton Bar & Off-Sale

**Big Screen TVs** We have the BIG 10 Network. Watch the game with us!

**Thursdays** Barringo! Lots of prizes, loads of fun! 7-9 p.m.

**Friday Night Bar Jackpot** 7 p.m. - big money giveaway!

Open 11 a.m.-2 a.m. Monday-Friday, 10 a.m.-2 a.m. Saturday, 11 a.m.-6 p.m. Sunday

Check out our expanded Off-Sale selection! Big selection of wines! Affordable prices!



# LODGING

## BECKER'S RESORT

Since taking ownership of Becker's Resort, Renee Becker has remodeled all of the units and has them available year-round for ice fishing and summer activities. Most of the units have kitchenettes and all are clean, modern units. Keep Becker's Resort in mind when making reservations for wedding parties, hunting, fishing and vacation plans. They also offer boat rentals. Food and a full bar is available on-site at Renee's Kitchen. (507-368-4399)

## BENCK LAKEVIEW LODGE

Under new management in 2017, Tami and Chad Benck have remodeled all 9 units, which are available for rent year round. Two of the units are double cabins with kitchenette facilities. Benck Lakeview Lodge boasts a beautiful view of the lake with easy public access and is within walking distance of town. Come visit Benck Lakeview Lodge to enjoy fishing, boating and sight-seeing in beautiful Lake Benton. (507-368-2585)

## WOODEN DIAMOND B&B

The Wooden Diamond is a year-round B&B, subtly hidden on the shores of Lake Benton Lake, offering a truly unique and memorable experience! The Wooden Diamond offers the "Parsonage", a large guest suite with private bath & kitchenette. Plus two new rooms coming in 2018 - the "Lakeside" and the "Acreage". A private deck overlooks the lake, plus the use of the fire-pit for those cool nights! Breakfast may be served in your room or in the three-season room. Call Bill and Jenifer for reservations (507)368-4305. email: billandjenifer@gmail.com Facebook: WoodenDiamondB&B

## HELP FOR VETERANS AND FAMILIES

### LINCOLN COUNTY VETERAN SERVICES

**Dan Kuss, Veterans Service Officer**

319 N. Rebecca St. | PO Box 29

Ivanhoe, MN 56142

Cell: 507-215-3159 | Phone: 507-694-1033

DKuss@co.lincoln.mn.us



# Kjergaard Sports

1951 200<sup>th</sup> Avenue | Lake Benton, MN  
507-368-4696 | Service Line 507-368-4894

**WHERE THE SERVICE AND THE PRICE ARE WORTH THE TRIP!**



**Hours:**  
Monday-Saturday 9-8  
Sunday 1-8

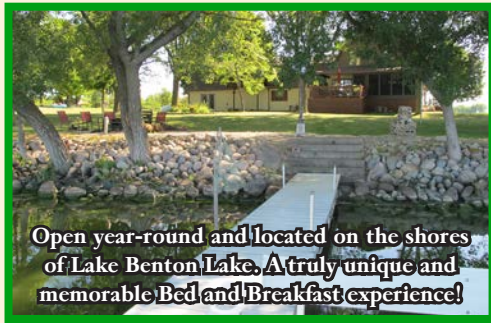
[www.kjergaardsports.com](http://www.kjergaardsports.com)  
[kjergaardguns@itctel.com](mailto:kjergaardguns@itctel.com)



- Over 4,000 firearms in stock
- Full line of Beretta, Benelli & Browning
- Dog training supplies
- Hunting clothing items
- Gun Repair
- Reloading Supplies
- Danner Boots
- Under Armour

Located from Lake Benton: 4 miles north on Hwy 75, 1 mile east on Co. 13, 1/2 mile north on 200<sup>th</sup> Ave

## Wooden Diamond B&B



Open year-round and located on the shores of Lake Benton Lake. A truly unique and memorable Bed and Breakfast experience!

A visit to the Wooden Diamond is most surely an experience to be treasured. Located on the shores of Lake Benton Lake, the "Parsonage Room" offers a large guest suite with private bath, kitchenette, free wireless connectivity, and D-TV. Choose to be outdoors? The private deck overlooking the lake with your morning coffee and use of the fire-pit for those cool nights add to your enjoyment! Breakfast may be served in your room or in the three-season room. Two new rooms to be added in 2018 - the "Lakeside Loft" and the "Acreage." Check out our FB page for progress!

### NEW OWNERSHIP IN 2017

**Bill and Jenifer Vollmer**

1593 Shady Shore Drive, Lake Benton, MN 56149  
(follow the signs on Highway 14)

Telephone (507) 368-4305

e-mail: [billandjenifer@gmail.com](mailto:billandjenifer@gmail.com)

Facebook: [WoodenDiamondB&B](https://www.facebook.com/WoodenDiamondB&B)

## KNOTTY PINE SUPPER CLUB



Join us in our cozy lounge with big screen TV or relax in our spacious dining area.

Delicious Hand Cut Steaks

Nightly Seafood Specials | Chicken | BBQ Ribs

Homemade Soups Everyday

Slow Roasted Prime Rib on Fridays and Saturdays

Something for Everyone to Enjoy!

Rehearsal Dinners | Banquets  
Birthday Parties | Anniversaries  
Special Occasions

**Open Wednesday-Sunday at 5 p.m.**

Located 1½ miles east of Elkton, SD

**(507) 548-3781**

[www.TheKnottyPineSupperClub.com](http://www.TheKnottyPineSupperClub.com)



We live for  
*happy families*

Local families depend on local care. That's why Avera invests in communities like Tyler and Lake Benton.



As part of the Avera family, Avera Medical Group Tyler and Avera Medical Group Lake Benton offer local residents the same great care.

Plus, connection to a larger health care system offers patients more access to comprehensive services near home.

Live better. Live balanced. Avera.™

**Avera**   
**Medical Group**

To schedule an appointment, call Avera Medical Group in:

Tyler: **507-247-5921**

Lake Benton: **507-368-4323**

16-PRIM-4229-REV120417

# SPECIALTY SHOPS

The beauty and charm of Lake Benton is magnified by the shopping opportunities available. You will find our fine retail stores and specialty/antique shops ready to cater to your very need from the new to the old. You will feel like royalty with the old-fashioned personal service.

## BUFFALO RIDGE ANTIQUES

has furniture, vintage clothing, collectible and antiques galore located at 112 East Benton. This unique shop is a shopper's haven, so stop in and spend the day away finding hidden treasures you are sure to enjoy for years to come.

## HOLE-IN-THE-MOUNTAIN EQUIPMENT

is a business that offers a wide variety of compact tractors and recreational vehicles. Give Steve Nichols a call to add a little fun to your leisure time.

## KJERGAARD SPORTS

is the largest gunshop in the area, just outside of Lake Benton. You'll be able to pick up any and all your hunting supplies with an amazing selection of guns, accessories, clothing and services. Stop out and see Steve and the crew, you won't go away empty-handed.

## LAKE BENTON HARDWARE AND GIFT

has about everything you would need, from gifts and garden items, seasonal supplies to the hardware section where you will find tools, paint and appliances. They have everything you may need to repair anything. The friendly, good hometown service also features free gift wrapping.

## NEW 2 YOU CONSIGNMENTS

is located at 128 East Benton Street, Lake Benton. New 2 You has a variety of consignment items such as clothing for babies, children and adults. Several household items available. (507-215-7636)

## JUNK PEDDLERS PARADISE

is located in downtown Lake Benton. The shop contains a variety of home, garden, vintage and unique antique "JUNK". The Junk Peddler also carries quality clothing for the entire family, vintage décor and furniture, jewelry and so much more. Come check it out, something for everyone. (507-530-9220)

## HAPPY HOUND GROOMING

is located at 109 South Center Street, in downtown Lake Benton. The owner/operator offers dog grooming by a certified dog groomer. Call for appointment. (507-530-1251)

## PRAIRIE ROSE ANTIQUE GALLERY

contains a plethora of antiques and collectibles ranging from coins to furniture and more. Located at 102 North Center Street the Prairie Rose Antique Gallery will provide a variety of beauty to any home. The Prairie Rose Antique Gallery also serves as a studio for the beautiful and unique artwork of Marge Petersen.

## CPR - COURTEOUS PROFESSIONAL REPAIR

Is located at 309 North Center Street. Owner, Larry Robbins, has over 40 years of experience repairing anything from bicycles to industrial robots. CPR repairs, maintains and sells all types of equipment, in addition to tool and equipment rentals for the do-it-yourselfer. CPR also offers recycling of old, gas powered equipment.

## Lake Benton Realty, Inc.

*Lisa J. Willert*  
Broker



Phone: 507-530-5361

E-mail: [lisa.willert@outlook.com](mailto:lisa.willert@outlook.com)

Website: [www.lakebentonrealty.com](http://www.lakebentonrealty.com)

1637 Edgewater Dr., Lake Benton, MN 56149

## Southwest Sanitation

Marshall, MN  
507-532-4500



Locally owned & operated by Dan & Scott Ritter

Commercial • Rural • Rolloffs • Residential • Recycling • Portable Toilets

# Covering all the news

# *on the Buffalo Ridge!*



## Buffalo Ridge Newspapers

Tyler Tribute • Hendricks Pioneer • Lake Benton Valley Journal

## Valley Journal

Lake Benton

Lincoln County's oldest newspaper, continuing the Lake Benton News

120 N. Center, PO Box 328

Lake Benton, MN 56149

507-368-4604

[www.lbvalleyjournal.com](http://www.lbvalleyjournal.com)

## Tyler Tribute



124 N. Tyler Street, PO Box Q

Tyler, MN 56178

507-247-5502

[www.tylertribute.com](http://www.tylertribute.com)

## Hendricks PIONEER



202 S. Main Street Plaza, PO Box 5

Hendricks, MN 56136

507-275-3197

[www.thehendrickspioneer.com](http://www.thehendrickspioneer.com)

# Lake Benton Economic Development Authority

Assisting with the expansion of existing business and the development of new business.

The members of the Economic Development Authority (E.D.A.) board work together with other organizations, individuals, and agencies so that Lake Benton can reach its business potential and keep abreast of the changes and progress occurring in the business world.



## COMMERCIAL AND RESIDENTIAL LOTS AVAILABLE

For business locations, inquire about the lots available in the Industrial Park development.

For residential locations, inquire about apartment availability and the newly developed residential lots in the Mork Addition.

**Please contact the Lake Benton Economic Development Authority at 507-368-4641 ext. 1**





- January 27 Sportsmen's Club Ice Fishing Tournament  
- Al's Landing
- March 17 Sportsmen's Club Wild Game Feed - Center Post
- March 17 LB Opera House Season Opener "Broadway  
Meets Lake Benton"
- March 24 LB Area Foundation/LB Volunteers for Education  
Gala - Center Post
- April 6-8, 13-15 LB Opera House Spring Play "Steel Magnolias"
- May 11-13 RTR Spring Play - Lake Benton Opera House
- May 12 Minnesota Walleye Opener
- May 24-27 Larry Olsen Music Fest - Larry Olsen Farm
- May 26 City Wide Rummage Sales
- May 28 Memorial Day Services - Lake Benton  
Opera House
- June 15-17 Saddle Horse Holiday Weekend
- June 30 Lake Benton Lake Association - Pork Sandwich  
Fundraiser/Member Drive
- July 21 Kjergaard Sports Buffalo Ridge Demo Shoot -  
Kjergaard Sports
- July 26-29, August 2-5 Lake Benton Opera House Summer  
Musical "Footloose"
- August 3-5 Benton-Fremont / Te Tonka Ha Rendezvous -  
Hole-In-The-Mountain Park
- September 8 King of Trails Market Day-Highway 75  
- Lakeside Park
- October 5-7, 12-14 LB Opera House Fall Play "A Little Murder Never  
Hurt Anybody"
- November 12 Veteran's Day Program - Lake Benton School
- November 17 LB Opera House Children's Theatre
- November 24-December 15 Lake Benton Business Holiday Open Houses
- December Holiday Tree Walk - Heritage Center
- December 1 Lake Benton Opera House Christmas Show
- December 7 Residential Holiday Lighting Contest
- December 8 Santa Claus Day - Lake Benton Elementary School
- January 2019 Lake Benton Chamber Kickoff Event



[www.lakebenton.us](http://www.lakebenton.us)

Find us on Facebook:  
search Lake Benton  
Convention and  
Visitors Bureau