

# Vacationers

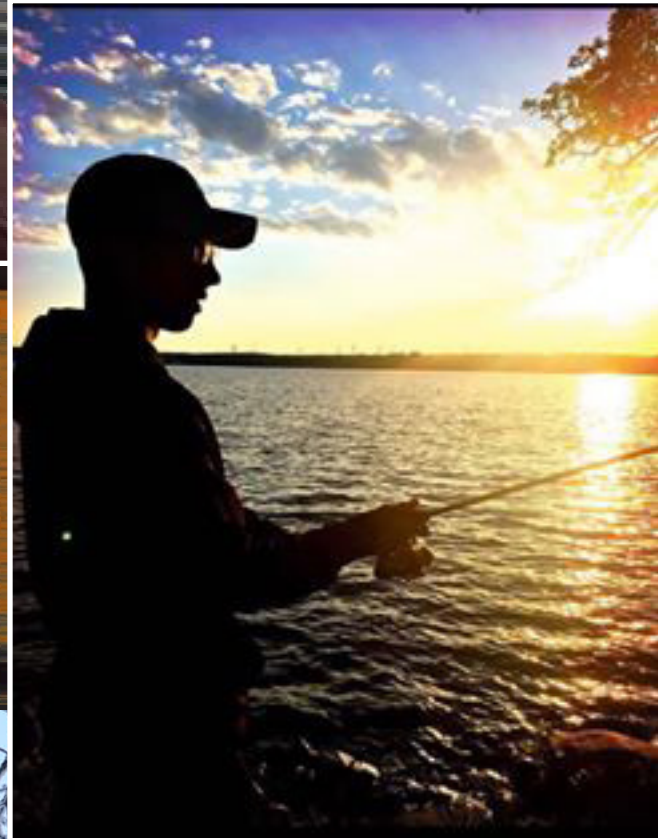


*Thank you to local residents for sharing their personal photos with the Chamber and allowing us to include them in our publication.*



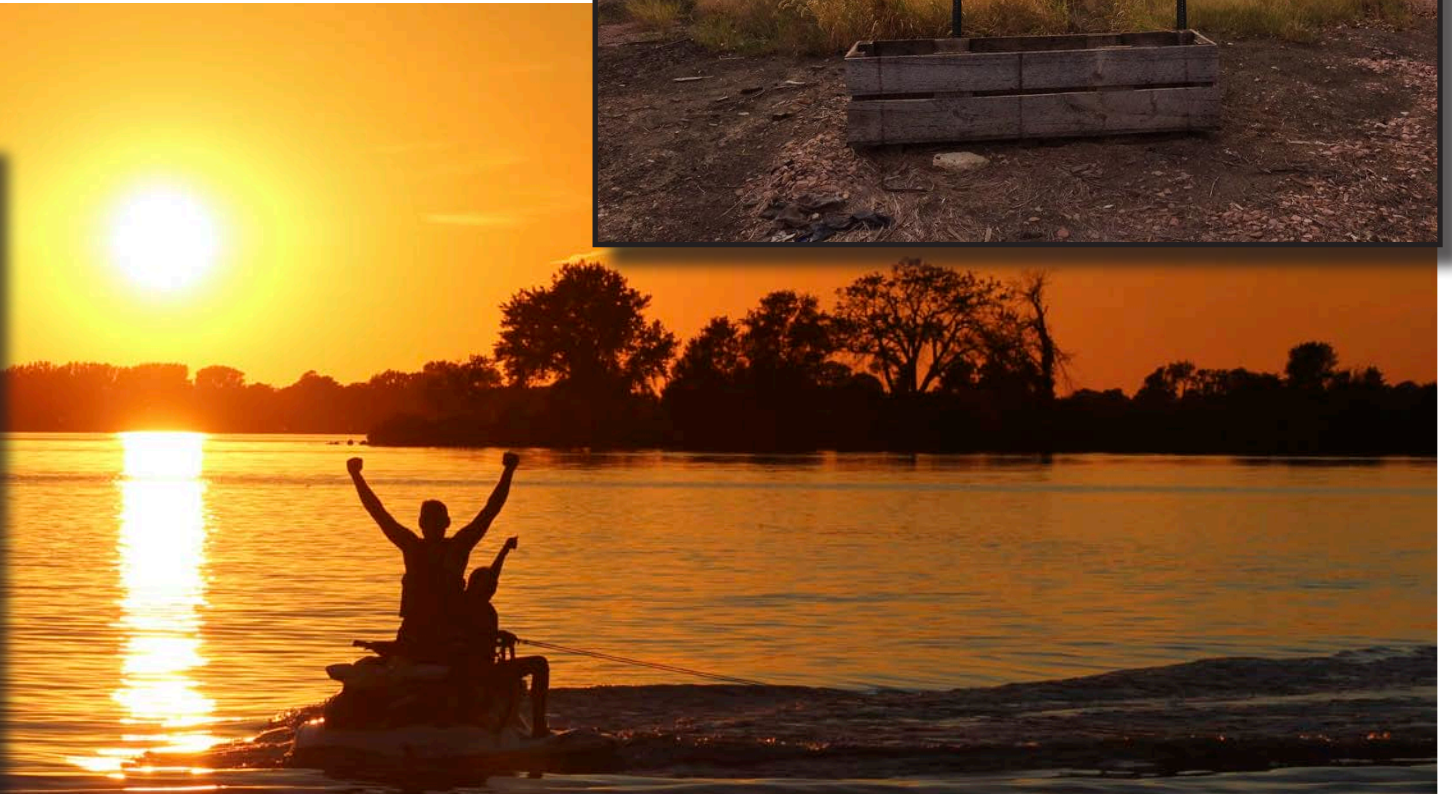
**Go, have fun!  
ITC will take care  
of your Internet!**

Speeds up to 100M - local customer service  
No data caps, No contracts  
1.800.417.8667 or [www.itc-web.com](http://www.itc-web.com)





# 's Paradise





# LINCOLN COUNTY PARKS

## NORWEGIAN CREEK COUNTY PARK

Norwegian Creek is located one mile north, and one mile east of the City of Lake Benton. Norwegian Creek has 108 campsites with electricity and water. Facilities include two picnic shelters, a bathhouse with showers, a fish-cleaning shed, RV dump station, a swimming beach, and two boat launches.

### CAMPING RATES:

Electricity & Water \$25.00 a night

Non-Electric \$20.00 a night

Tents \$18.00 a night

For seasonal rates call 507-368-9350

Rates subject to change.

## PICNIC POINT COUNTY PARK

Picnic Point is located eight miles north, three miles west, and one mile north of Lake Benton. The park is 43 acres located on the southern side of Lake Shaokatan. Picnic Point offers 30 campsites with electricity and water. It also has numerous sites without electricity. Also, Picnic Point has one picnic shelter, a swimming beach, two boat launches, a floating T-dock, a fish cleaning shed, and a RV dump station.

### CAMPING RATES:

Electricity & Water \$25.00 a night

Non-Electric \$20.00 a night

Tents \$18.00 a night

For seasonal rates call 507-368-9350

Rates subject to change.

## HOLE-IN-THE MOUNTAIN COUNTY PARK

Hole-In-The-Mountain Park is located on the western edge of Lake Benton just off Highway 14. There are 33 campsites with electricity and water, and 30 electrical sites located in the horse campground. The park is approximately 800 acres of woodland and prairie land. Throughout the park you will find historical sites along five miles of hiking/horse trails. Hole-In-The-Mountain Park also offers two picnic shelters. The newly renovated chalet can be rented for family reunions, graduation parties, and other functions. Cost is \$100 per day plus \$100 damage deposit.

### CAMPING RATES:

Electricity & Water \$25.00 a night

Non-Electric \$20.00 a night

Tents \$18.00 a night

For seasonal rates call 507-368-9350



FOR RESERVATIONS CALL 507-368-9350 or write to: Lincoln County Parks, P.O. Box 369, Lake Benton, MN 56149



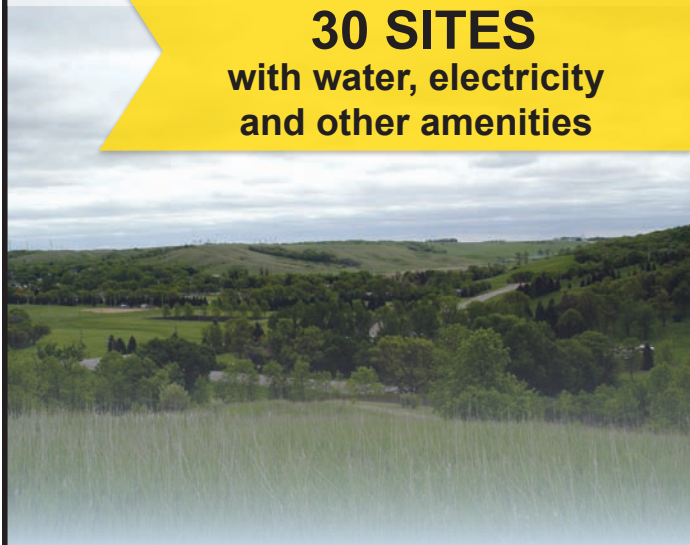


## Hole-in-the-Mountain Park and Horse Camp

Hole in the Mountain Horse Camp features

**30 SITES**  
with water, electricity  
and other amenities

The view from the horse camp is spectacular. The camp has five to seven miles of trails, electrical hookups, showers and restrooms. Protected by trees, high atop the hills, this is a calm, relaxing atmosphere for both campers and animals.





## Wooden Diamond B&B



Open year-round and located on the shores of Lake Benton Lake. A truly unique and memorable Bed and Breakfast experience! The "Parsonage Room" offers a large guest suite with private bath, kitchenette, free wireless connectivity, and D-TV. Choose to be outdoors? The private deck overlooking the lake with your morning coffee and use of the fire-pit for those cool nights add to your enjoyment! Breakfast may be served in your room or in the three-season room. The farmhouse room takes you back to a simpler time with its comfy 4-poster beds and main floor ease. Each room will sleep up to 4 guests!

**Bill and Jenifer Vollmer**

**1593 Shady Shore Drive, Lake Benton, MN 56149**  
(follow the signs on Highway 14)

**Telephone (507) 368-4305**

**e-mail: billandjenifer@gmail.com**

**Facebook: WoodenDiamondB&B**



*Providing Services to*

***Business & Communities:***

- Business & Economic Development
- Grant Services (Writing & Administration)
- Small Cities Development Program
- Community Development
- Housing Management
- Renewable Energy Development
- Maintenance Services

**Contact us today to see how DSI can offer solutions to your business or community.**

**402 N. Harold Street / Ivanhoe, MN 56142**

**Call us at (507) 694-1552**

**visit us on our webpage: [dsi-services.com](http://dsi-services.com)**

**Follow us on Facebook: Development Services, Inc.**

***Life on the lake is relaxing.***  
***Let us help make it simpler.***

***Fishing & hunting licenses,  
bait & tackle available***

**(507) 368-4399**  
[lakebentonresort@gmail.com](mailto:lakebentonresort@gmail.com)

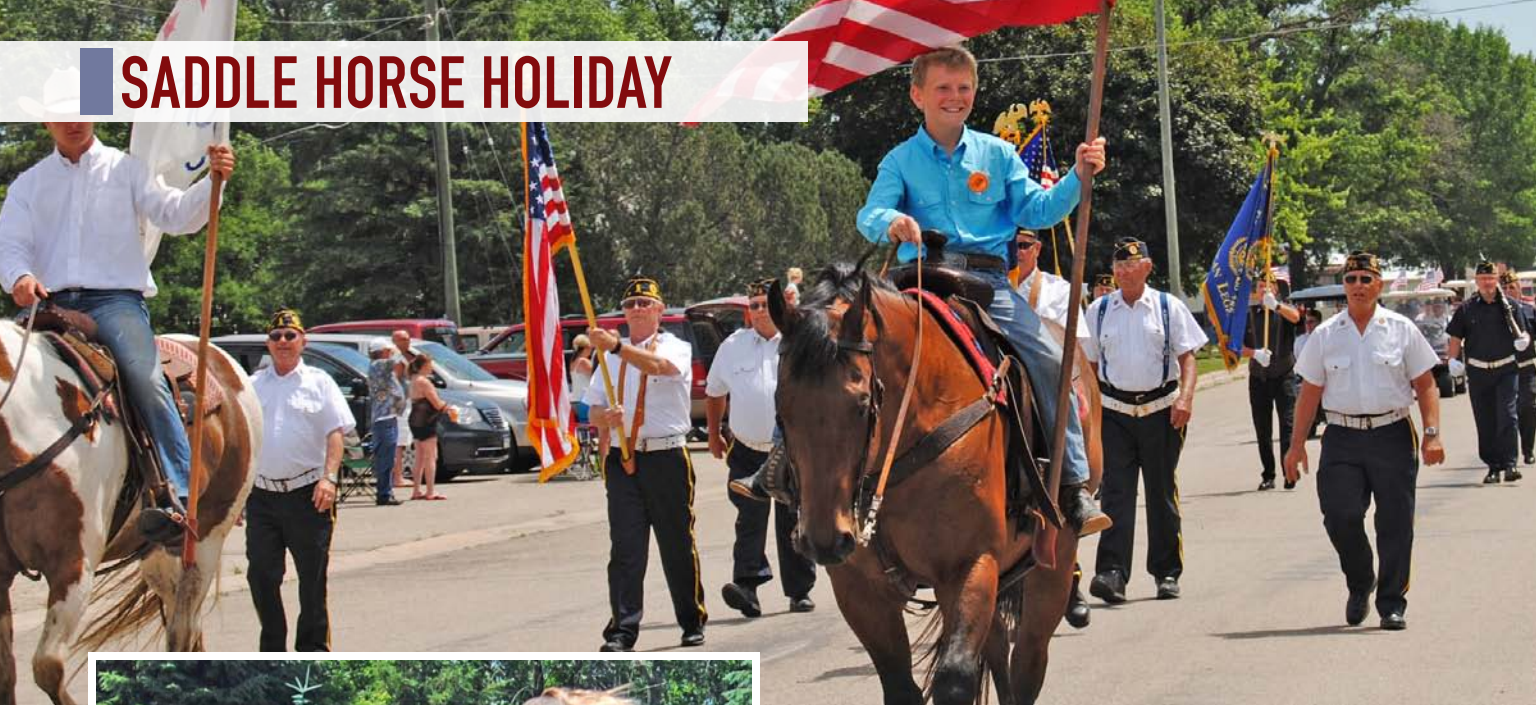


**Hours:**

**Mon - Thurs 8:00 a.m. - 9:00 p.m.**  
**Fri - Sat - Sun 8:00 a.m. - Close**



# SADDLE HORSE HOLIDAY



The organizational meeting of the Dakota-Minnesota Saddle Horse Holiday was held at the Lorenzen Cafe in Lake Benton on March 23, 1947. Over the past years, the event has grown to include as many as eight hundred horses and a two-ring horse show that is held annually on the third Sunday of June. The Chamber and local businesses host various activities for families and children throughout the weekend celebration.

The 73<sup>rd</sup> Annual event begins with a trail ride at 10:00 a.m. on Sunday. The scenic trail takes the riders through our beautiful rolling hills and concludes at the parade route. The horses are an ever popular addition to our annual parade which takes place at noon. Our parade has also grown to include as many as 100+ units. The show begins at 1:00 p.m. at the arena, located at Horse Hill at the Hole-in-the-Mountain Park in Lake Benton. There are numerous classes and games/contests that take place with trophies and ribbons awarded. Please join us for a weekend of fun! There is something for everyone.

Please contact: Lynette Hauswedell 507-531-0178, Mike Hauswedell 507-531-0164 or Lori Hart 507-247-3401 for further information regarding the horse show and trail ride. Please contact Janel Steufen at 507-368-4261 regarding the parade.

## Western Veterinary Clinic

4 miles east of Lake Benton  
on Highway 14



1495 Cty. Hwy. 6  
Tyler, MN 56178  
Phone: 507-247-5410  
Phone: 507-368-4251



Veterinarians:  
Dr. Loren Johnson  
Dr. Roxanne Nielsen  
Dr. Cassy Griebel



JUSTIN  
BUSHMAN  
OWNER



605-690-0167 • 101 Elk St., Elkton, SD 57026



# BENTON-FREMONT DAYS/TE TONKA HA RENDEZVOUS



Dave at 605-693-4589, Marc Widmark at 507-275-3655, or email: [chamber@lakebenton.us](mailto:chamber@lakebenton.us).

**C**ome celebrate the Annual Benton-Fremont Days/Te Tonka Ha Rendezvous during the first weekend in August.

Go back in time when Minnesota was part of the Dakota Territory and the early explorers, Nicollet and John C. Fremont first came to the "Hole-in-the-Mountain" in 1879.

The annual celebration will be held at Hole-in-the-Mountain Park, in Lake Benton, bringing re-enactors from the surrounding area to celebrate history as it once was in this part of the early fur trade and building of the American nation.

The Benton-Fremont/ TeTonka Ha weekend will not only entertain you, but will bring Lake Benton's history alive, by featuring a variety of historical, educational, and fun activities for the entire family. Some of the events include; Black

Powder Shooters, Hawk and Knife demonstrations, singing and dancing, pottery and spinning/weaving demonstrations, the Fur Traders Campsite, and outdoor worship on Sunday morning. The event will also feature the Annual TaTonka Knap-In and the Pickers Paradise.

Exceptional entertainment will be provided by a variety of entertainers.

Remember that food will be available throughout the weekend.

Come and enjoy the weekend sponsored by the Lake Benton Chamber of Commerce and the Brookings Renegades. This event is free and open to the public offering a fun-filled educational and entertaining weekend. For more information about Benton-Fremont/Te Tonka Ha contact

ANNUAL  
**BENTON FREMONT DAYS**  
HISTORIC  
**TE TONKA HA RENDEZVOUS**

**1<sup>st</sup> Weekend  
in August**  
**Hole-in-the-  
Mountain  
County Park**  
**Lake Benton, MN**

**ANNUAL TATONKA  
KNAP-IN AND PICKERS PARADISE**

***MUZZLELOADING SHOOT — HAWK AND KNIFE CONTESTS***  
Public Welcome - Free Admission

## S & E Auto Clinic

**Auto Repair**  
Scott Christensen

507-368-9288 Shop  
507-368-9357 Home

Located Downtown  
Lake Benton, MN 56149



# LAKE BENTON LAKE



Lake Benton Lake: one of the most popular lakes in southern Minnesota.

It's no wonder Lake Benton Lake is so well known. This famous lake has an area of 2,875 acres, making it the sixth largest lake in southern Minnesota. Fishermen from throughout the upper Midwest come the year around to catch game fish, including walleye, northern pike, and large mouth bass. Pan fishermen enjoy catching beautiful yellow perch, crappies, bluegills, and bullheads.

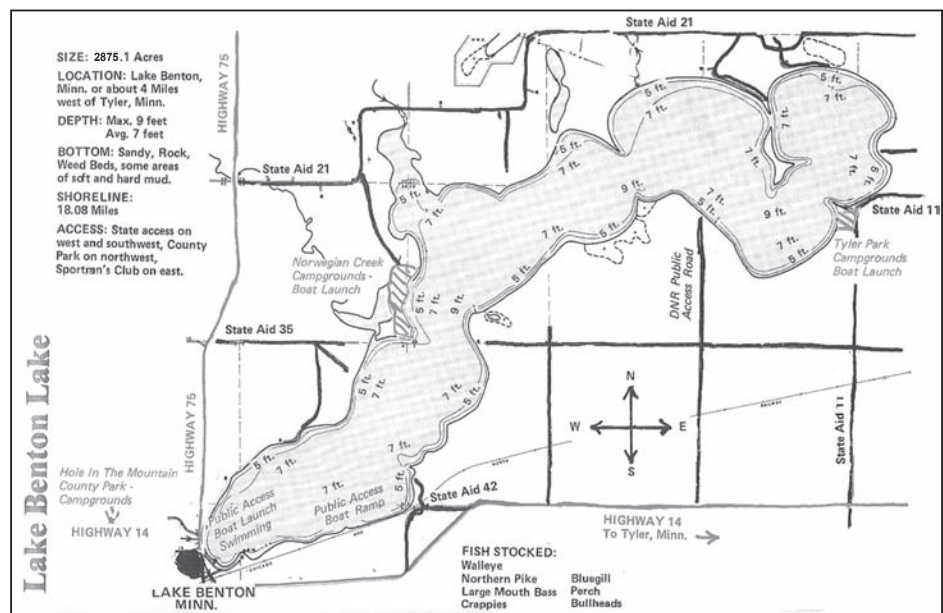
Fishermen can be seen daily on the lake, in their boats and shore fishing, as they enjoy the peaceful and relaxing atmosphere of a pleasant summer day. In the winter a "little town" appears as the ice fishermen arrive with their unique houses. The aeration system, maintained by our local Sportsmen's Club, prevents any winter-kill of fish. The fertility of this prairie lake provides the nutrients needed to produce fish that are above average in size and numbers. Many trophy walleye that are caught range from eight to twelve pounds. Walleye weighing two to four lbs. are common. Many perch are over one pound and many exceed two pounds in size.

The DNR stocks the lake with more than two million walleye fry every two years. This is in addition to those

produced in the lake itself.

Fishermen aren't the only ones who enjoy the lake. Boating and water skiing are always popular in the summertime. Swimmers gather at the beaches for a day in the sun. In the winter, for a cure of the winter blues, snowmobiling is a fun sport.

The Lake Benton Lake Association is continually involved in projects to improve the water quality of the lake. They realize that a good lake is not only an asset to the residents who live on the lake, but it is also an economic asset to the local economy as well.





# THE HOLE-IN-THE-MOUNTAIN PRAIRIE

The Hole-in-the-Mountain Prairie is an 1,157-acre prairie and oak savanna wildlife preserve located south of Lake Benton along Highway 75. The preserve is part of a larger glacial escarpment that runs from southwest Minnesota through northeast South Dakota. Locally, this hilly region is known as Buffalo Ridge.

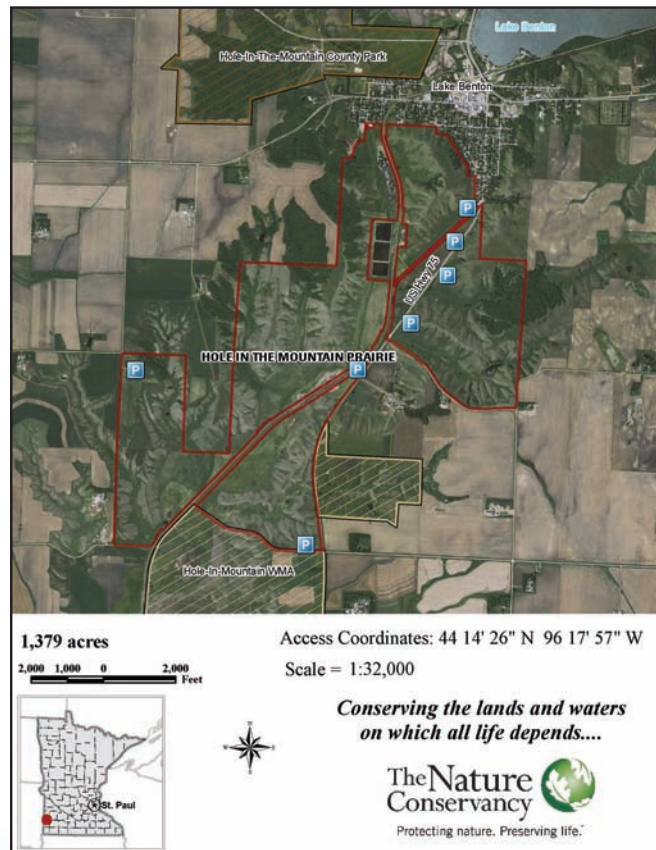
Its undulating terrain is carpeted in wildflowers and alive with birds and butterflies during summer. The preserve provides excellent habitat for rare prairie-dependent insects (including 25 species of butterflies), nesting waterfowl, passerines, raptors, and other grassland birds.

The Nature Conservancy encourages you to visit the preserve. We also strive to maintain as natural a setting as possible while minimizing wildlife disturbance. The preserve is open during daylight hours for hiking, birdwatching, photography, and any other non-consumptive uses. We remind you that access is walk-in only (no horses, mountain bikes, ATVs, or pets) from the roads around the preserve. Vehicles can be parked near the main sign near the railroad, one mile south of Lake Benton along Highway 75 or on the edge of the gravel road on the south side of the preserve. Removal of plants, animals, or any natural materials is prohibited. If you pack it in, please pack it out!

The preserve harbors more than 60 species of grasses, sedges, and rushes, 10 species of trees and shrubs and 200 species of wildflowers. Native plants include six of special concern: prairie moonwort, small-leaved pussytoes, small white lady's slipper, red threeawn, soft goldenrod, and slender milk-vetch.

Most unique to Hole-in-the Mountain are its butterflies, thriving on the native grasses and forbs protected here: The Dakota skipper and Ottoe skipper, both threatened species; and the Uncas skipper (*Hesperia uncas*), an endangered species. Visitors may also catch glimpses of a suite of prairie birds, mammals, and other insects including badger, coyote, white-tailed deer, wild turkey, red-tailed hawk, meadowlark, and bobolink.

The prairie valley is the headwaters of Flandreau Creek, which runs in a southwesterly direction toward the



Big Sioux River. Indians called the half-mile-wide valley “Mountain Pass” or “Hole-in-the-Mountain.” This preserve is owned and operated by The Nature Conservancy as part of a larger project that strives to enhance habitat across the Prairie Coteau region of Minnesota and South Dakota by working to protect native rangelands and wildlife through sound habitat management while working in partnership with the farmers, ranchers, and public agencies who share our interest in preserving this incredible landscape. Hole-In-The-Mountain Preserve represents in full beauty what the southern end of the larger 2.4-million-acre Prairie Coteau region might have looked like prior to European settlement.





# Freddy's Lake Benton Bar & Off-Sale

**Hours:** 4 p.m. – 10 p.m., Mon-Thurs  
11 a.m. – 10 p.m., Fri-Sat  
Open Sundays (Summer)

## Freddy's Lake Benton Bar



\$9.99 8oz Prime Rib every Friday and Saturday Night. Prime Rib Dinner starts at 5:30. Friday Night's we draw for the winner of Freddy's "Poor Man's Lottery" at 7 PM. FREE TO ENTER, MUST BE PRESENT TO WIN. Each week it goes up \$25 if no one wins. Minimum \$100.

Big Screen TVs, Darts, Pool, Outdoor Patio  
Check Facebook for events and live entertainment  
Gift Cards Available!

114 Center Street N.  
Lake Benton, MN 56149  
507-368-4507



Facebook: LakeBentonBar

**Great food  
at the little  
town by  
the lake!**

## Lunch Box



Breakfast | Lunch | Takeout

Mon.-Fri. – 7:30 a.m.-1:15 p.m.  
Saturday – 7:30 a.m.-11:00 a.m.  
(November – March closed on Saturdays)

507-368-3400 • 116 N. Center Street, Lake Benton, MN

## KNOTTY PINE SUPPER CLUB



Join us in our cozy lounge  
with big screen TV or relax in  
our spacious dining area.



Delicious Hand Cut Steaks  
Nightly Seafood Specials | Chicken | BBQ Ribs  
Homemade Soups Everyday  
Slow Roasted Prime Rib on Fridays and Saturdays  
Something for Everyone to Enjoy!



Rehearsal Dinners | Banquets  
Birthday Parties | Anniversaries  
Special Occasions

**Open Wednesday-Sunday at 5 p.m.**

Located 1½ miles east of Elkton, SD  
(507) 548-3781  
www.TheKnottyPineSupperClub.com

*Lake Benton Area  
Community & Event Center*

**Book Your Event With Us!**

Weddings, birthdays,  
anniversaries, family reunions,  
conferences – any special event  
for any time of the year.

**Call 507-368-4641**



## DINING

### THE LUNCH BOX

Located at 116 Center Street, Lake Benton. Enjoy home style cooking for your breakfast and lunch meals. (507-368-3400)

### COUNTRY HOUSE RESTAURANT AND CATERING

Located on East Highway 14, Lake Benton. Enjoy fine dining by indulging in a mouth watering four-course meal or dine casually in the lower level. They also offer catering, take out and group packages. Open Thursday–Sunday evenings all year long.

(507-368-4223) Facebook: CountryHouseSupperClub

### KNOTTY PINE SUPPER CLUB

Located near Elkton, SD. The Knotty Pine offers a gourmet menu, specializing in their well-known prime rib and garlic mashed potatoes. Their sports bar is a great place to watch the games with your friends. They also offer a party room for special occasions. (507-548-3781 or 1-800-442-7977)

### FREDDY'S LAKE BENTON BAR & OFF-SALE

Located downtown at 114 N. Center St. (507) 368-4507 - offering off-sale wine, beer and liquor. The Sports Bar offers a full bar, pizza, sandwiches, baskets, appetizers, along with big screen TVs, pool and darts.

### LAKE BENTON RESORT

Delicious sit down and take-out food, including pizza, sandwiches, appetizers and more. Full bar in the restaurant area. (507-368-4399) Facebook: LakeBentonResort

### EXPRESSWAY

Located on US Highway 75 and Benton Street in downtown Lake Benton. The ExpressWay features Hot Stuff Pizza, Smash Hit Subs, sandwiches and many convenience grocery items. (507-368-4204)

## COUNTRY HOUSE Restaurant & Catering

Casual Family Dining | Take out | Cocktails

Private Party Room | Private Groups by Reservation

Steaks | Seafood | Broasted Chicken | Sandwiches



Open at 5:00 p.m., Thursday - Sunday

Catering in southeast South Dakota  
and southwest Minnesota

**SERVING YOU SINCE 1983**

East Hwy. 14, Lake Benton, MN

Email: [aschwing@mchsi.com](mailto:aschwing@mchsi.com)

Phone: 507-368-4223 | Cell: 507-829-4843



## LODGING

### LAKE BENTON RESORT

Since taking ownership of the Lake Benton Resort, the owners have remodeled all of the units and are available year-round for ice fishing and summer activities. Most of the units have kitchenettes and all are clean, modern units. Keep Lake Benton Resort in mind when making reservations for wedding parties, hunting, fishing and vacation plans. They also offer pontoon, jet ski, paddle boat, paddle board and kayak rentals. Food and a full bar is available on-site. (507-368-4399) Facebook: LakeBentonResort

### BENCK LAKEVIEW LODGE

Under new management in 2017, Tami and Chad Benck have remodeled all 9 units, which are available for rent year round. Two of the units are double cabins with kitchenette facilities. Benck Lakeview Lodge boasts a beautiful view of the lake with easy public access and is within walking distance of town. Come visit Benck Lakeview Lodge to enjoy fishing, boating and sight-seeing in beautiful Lake Benton. (507-368-2585) Facebook: Bencklakeviewlodge

### WOODEN DIAMOND B&B

The Wooden Diamond is a year-round B&B, subtly hidden on the shores of Lake Benton Lake, offering a truly unique and memorable experience! The Wooden Diamond offers the "Parsonage", a large guest suite with private bath, kitchenette, free wireless connectivity and D-TV. The new "Farmhouse" room takes you back to a simpler time, with its comfy 4-poster bed and main floor ease. Each room sleeps 4 guests. Outdoor activities will add to your enjoyment; including a private deck overlooking the lake and use of the fire pit for those cool nights. Breakfast may be served in your room or in the three-season room. Call Bill and Jenifer for reservations (507) 368-4305 or email: Billandjenifer@gmail.com Facebook: WoodenDiamondB&B

## Kjergaard Sports

1951 200<sup>th</sup> Avenue | Lake Benton, MN  
507-368-4696 | Service Line 507-368-4894

**WHERE THE SERVICE AND THE PRICE ARE WORTH THE TRIP!**



**Hours:**  
Monday-Saturday 9-8  
Sunday 1-8

[www.kjergaardsports.com](http://www.kjergaardsports.com)  
[kjergaardguns@itctel.com](mailto:kjergaardguns@itctel.com)

- Over 5,000 firearms in stock
- Full line of Beretta, Benelli & Browning
- Dog training supplies
- Hunting clothing items
- Gun Repair
- Reloading Supplies
- Danner Boots
- Under Armour
- Buy, Sell and Trade!

Located from Lake Benton: 4 miles north on Hwy 75, 1 mile east on Co. 13, ½ mile north on 200<sup>th</sup> Ave



# LAKE BENTON GROCERY

104 East Benton | Lake Benton, MN | 507-368-4585

## Here to Serve You!



## Lake Benton Realty, Inc.

*Lisa J. Willert*  
Broker



Phone: 507-530-5361

E-mail: [lisa.willert@outlook.com](mailto:lisa.willert@outlook.com)

Website: [www.lakebentonrealty.com](http://www.lakebentonrealty.com)

1637 Edgewater Dr., Lake Benton, MN 56149

## BUFFALO RIDGE ANTIQUE SHOP

108 Benton Street, Lake Benton, MN 56149

**507-215-5584**

**Owner: Shirley Sandberg**

Antiques, Collectibles, Furniture, Lamps, and more!



Summer Hours: 10 a.m. - 4 p.m. (Closed Wednesdays)

Winter Hours: 11 a.m. - 2 p.m. (Closed Wednesdays)



## RETHWISCH & SON

Whether you live here, work here, play here or maybe are just passing through, you will want to stop in at Rethwisch & Son, a new family owned business established in 2018. The business began by combining a few of Lake Benton's cornerstone businesses and maintains an assortment of General Merchandise including; Auto-parts, Gifts, Hardware, Home Décor, Kitchen & Bath, Lumber, Office Supplies, Pet-care, Sporting Goods, Toys and more. Stop by and see what small towns were built on and continue to thrive on, in a place with a long history of serving the Lake Benton area community and visitors for well over 100 years. We look forward to meeting you or welcoming you back. Hope you enjoy your visit!

Main building is located at:  
101 North Center St., Lake Benton, MN 56149  
Open 6 days a week  
507-368-4283



# BUSINESSES AND SPECIALTY SHOPS

The beauty and charm of Lake Benton is magnified by the shopping opportunities available. You will find our fine stores and shops ready to cater to your every need!

## BLONDIE'S HAIR STUDIO

103 W. Benton St. (507-368-4441). Hair and beauty salon.

## BUFFALO RIDGE ANTIQUES

has furniture, vintage clothing, collectible and antiques galore located at 108 East Benton. (507-215-5584) for appointment.

## BUFFALO RIDGE STATE AGENCY

located at 107 N. Center St. (507-368-6693). For all your insurance needs.

## COUNTRY SIDE NURSERY

A local nursery providing landscaping services and retail sale of flowers, plants, trees and shrubs at their shop, located at 1186 County Road 118 in rural Lake Benton. Call Steve or Penny at (507-368-9622)

## CPR – COURTEOUS PROFESSIONAL REPAIR

Is located at 309 North Center Street. Owner, Larry Robbins, has over 40 years of experience repairing anything from bicycles to industrial robots.

## CS NATURAL HEALTH

A local Natural Health consultant. Located at 101 W. Hwy 14. Call Sandra at (507-368-9224)

## DOG TRAINING BY JESS

Safe, fun and effective dog training for all breeds and ages! Contact Jess at (612-930-3641)

## DSI (DEVELOPMENT SERVICES INC.)

Providing services and solutions to businesses and communities for economic development and management. (507-694-1552)

## EXPRESSWAY/CENEX

One-stop shop for gas, food, snacks and beverages. (507-368-4204)

## FIRST SECURITY BANK

located at 107 N. Center St. (507-368-4261). Help with all your full service banking needs.

## GAIL'S GOURMET GOODIES

Unique and delicious baked goods, delivered fresh! Call Gail at (507-368-4302)

## HAPPY HOUND GROOMING

is located at 109 South Center Street, in downtown Lake Benton. The owner/operator offers dog grooming by a certified dog groomer. Call for appointment. (507-530-1251)

## HOLE-IN-THE-MOUNTAIN EQUIPMENT

is a business that offers a wide variety of compact tractors and recreational vehicles. Located at 305 Center Street North. Steve Nichols (507-368-2351)

## KJERGAARD SPORTS

is the largest gunshop in the area, just outside of Lake Benton. Call Steve at (507-368-4696) Facebook: KjergaardSports

## KINNER & CO. LTD.

Local Accounting firm, to provide assistance with taxes, bookkeeping and investments. Contact Jenny at (507-368-2711)

## LAKE BENTON GROCERY

located at 104 E. Benton St. (507-368-4585). Offering grocery, produce, meat, bakery and floral.

## LAKE BENTON REALTY

1637 Edgewater Dr. (507-530-5361) – real estate broker – email: lisa.willert@outlook.com

## LAKE BENTON STORAGE

for your offsite storage needs. Email: LBStorag@itctel.com (507) 829-6693

## LAKE BENTON VALLEY JOURNAL

Part of Buffalo Ridge Newspapers (Tyler, Lake Benton and Hendricks). (507-368-4604)

## LAKEVIEW DESIGNS

1573 Shady Shore Dr. (507-368-4755). Offering floral design services. (co-located at LB Grocery)

## MARY'S SHOPPE

located at 120 N. Center St. (507-368-9530). Hair and beauty salon.

## NEW 2 YOU CONSIGNMENTS

is located at 128 East Benton Street, Lake Benton. Darla has a variety of consignment items such as clothing and household items. (507-215-7636)

## PATRICK HAYNES COMPUTERS

Local owner/technician providing computer repairs, software/hardware upgrades, advice and training. Call Pat at (507-368-2755)

## PLUTO BOES LEGAL PLLC

A law firm that cares for you and your family, including services related to Medical Assistance, Disability Assistance and Estate Planning. Call (1-866-457-3131) to schedule a personal appointment. Located at 106 N. Center Street in downtown Lake Benton.

## RETHWISCH & SON

Rethwisch & Son is a local hardware store and lumber supplier, located at 101 N. Center Street in downtown Lake Benton. The newly remodeled store has it all; from gifts to garden items. (507-368-4283)

## S&E AUTO CLINIC

located at 108 W. Benton St. (507-368-9288). Automotive repairs.

## WESTERN VETERINARY CLINIC

located 4 miles east of Lake Benton on Hwy 14, at 1495 Cty Hwy 6 (507-368-4251).



# Covering all the news

# *on the Buffalo Ridge!*



## Buffalo Ridge Newspapers

Tyler Tribute • Hendricks Pioneer • Lake Benton Valley Journal

## Lake Benton Valley Journal

Lincoln County's oldest newspaper, continuing the Lake Benton News

120 N. Center, PO Box 328

Lake Benton, MN 56149

507-368-4604

[www.lbvalleyjournal.com](http://www.lbvalleyjournal.com)

## Tyler Tribute

124 N. Tyler Street, PO Box Q

Tyler, MN 56178

507-247-5502

[www.tylertribute.com](http://www.tylertribute.com)

## Hendricks PIONEER



202 S. Main Street Plaza, PO Box 5

Hendricks, MN 56136

507-275-3197

[www.thehendrickspioneer.com](http://www.thehendrickspioneer.com)



# Lake Benton Economic Development Authority

Assisting with the expansion of existing business and the development of new business.

The members of the Economic Development Authority (E.D.A.) board work together with other organizations, individuals, and agencies so that Lake Benton can reach its business potential and keep abreast of the changes and progress occurring in the business world.



## COMMERCIAL AND RESIDENTIAL LOTS AVAILABLE

For business locations, inquire about the lots available in the Industrial Park development.

For residential locations, inquire about apartment availability and the newly developed residential lots in the Mork Addition.

**Please contact the Lake Benton Economic Development Authority at 507-368-4641 ext. 1**





## 2020

January 25  
March 21  
March 14  
April 4  
April 17-19, 24-26  
  
May 8-10  
May 10  
May 21-23  
May 23  
May 25  
June 6  
June 19-21  
June 27  
July 18  
July 23-26, July 29-Aug. 2  
  
July 31 - Aug. 2  
September 5  
October 10  
October 31  
November 11  
November 12-15, 19-22  
Nov. 28-Dec. 19  
December 1-31  
December 11  
December 5  
December 12  
January 2020

## 2021

January 30  
March 20  
March 13  
TBD  
TBD  
  
TBD  
May 9  
May 27-29  
May 29  
May 31  
June 5  
June 18-20  
June 26  
July 17  
TBD  
  
August 6-8  
September 4  
TBD  
October 31  
November 11  
TBD  
Nov. 27-Dec. 18  
December 1-31  
December 10  
December 4  
December 11  
January 2021

Sportsman's Club Ice Fishing Tournament - Al's Landing  
Sportsmen's Club Wild Game Feed - Center Post  
LB Opera House Season Opener "Broadway Meets Lake Benton"  
LB Area Foundation Gala - LB Community & Event Ctr  
LB Opera House Spring Play - 2020 "Out of Sight, Out of Murder",  
2021 "The Odd Couple"  
RTR Spring Play - Lake Benton Opera House  
Minnesota Walleye Opener  
Larry Olsen Music Fest - Larry Olsen Farm  
City Wide Rummage Sales  
Memorial Day Services - Lake Benton Opera House  
Sportsmen's Club Walleye Fishing Tournament  
Saddle Horse Holiday Weekend  
Lake Benton Lake Association - Pork Sandwich Fundraiser/Member Drive  
Kjergaard Sports Buffalo Ridge Demo Shoot - Kjergaard Sports  
Lake Benton Opera House Summer Play - 2020 "Grease",  
2021 "Les Miserables"  
Benton-Fremont / Te Tonka Ha Rendezvous - Hole-In-The-Mountain Park  
King of Trails Market Day-Highway 75 - Lakeside Park  
LB Opera House Children's Theatre  
Chamber Halloween "Trunk or Treat on Center St." - Heritage Center  
Veteran's Day Program - Lake Benton School  
LB Opera House Fall Play 2020 "Elf: The Musical", 2021 "Plaid Tidings"  
Lake Benton Business Holiday Open Houses  
Holiday Tree Walk - Heritage Center  
Chamber Residential Holiday Lighting Contest  
Lake Benton Opera House Christmas Show  
Santa Claus Day - Lake Benton Elementary School  
Lake Benton Chamber Kickoff Event

