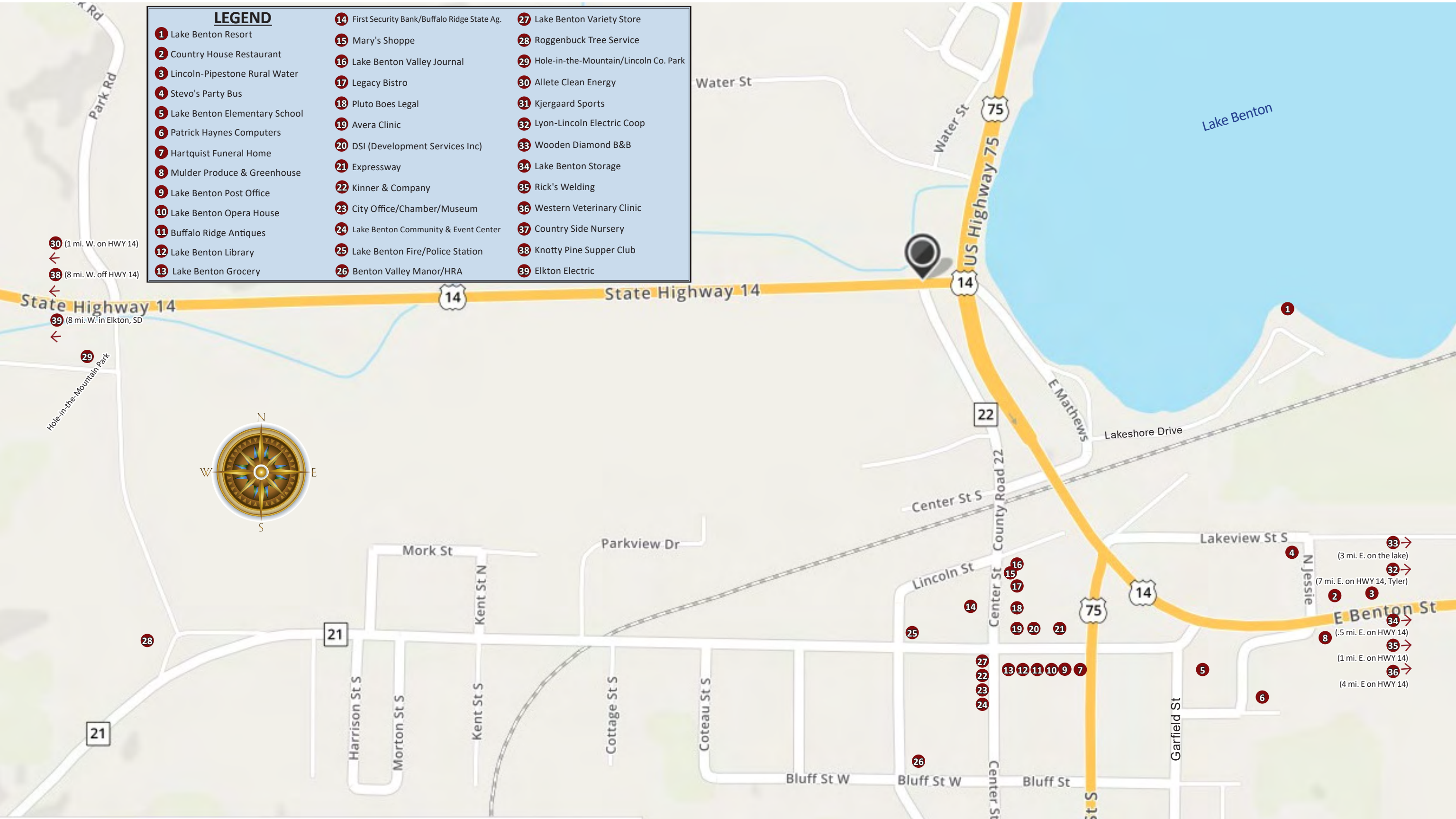


## LEGEND

- |  |   |   |
|--|---|---|
| <b>1</b> Lake Benton Resort            | <b>14</b> First Security Bank/Buffalo Ridge State Ag. | <b>27</b> Lake Benton Variety Store             |
| <b>2</b> Country House Restaurant      | <b>15</b> Mary's Shoppe                               | <b>28</b> Roggenbuck Tree Service               |
| <b>3</b> Lincoln-Pipestone Rural Water | <b>16</b> Lake Benton Valley Journal                  | <b>29</b> Hole-in-the-Mountain/Lincoln Co. Park |
| <b>4</b> Stevo's Party Bus             | <b>17</b> Legacy Bistro                               | <b>30</b> Allete Clean Energy                   |
| <b>5</b> Lake Benton Elementary School | <b>18</b> Pluto Boes Legal                            | <b>31</b> Kjergaard Sports                      |
| <b>6</b> Patrick Haynes Computers      | <b>19</b> Avera Clinic                                | <b>32</b> Lyon-Lincoln Electric Coop            |
| <b>7</b> Hartquist Funeral Home        | <b>20</b> DSI (Development Services Inc)              | <b>33</b> Wooden Diamond B&B                    |
| <b>8</b> Mulder Produce & Greenhouse   | <b>21</b> Expressway                                  | <b>34</b> Lake Benton Storage                   |
| <b>9</b> Lake Benton Post Office       | <b>22</b> Kinner & Company                            | <b>35</b> Rick's Welding                        |
| <b>10</b> Lake Benton Opera House      | <b>23</b> City Office/Chamber/Museum                  | <b>36</b> Western Veterinary Clinic             |
| <b>11</b> Buffalo Ridge Antiques       | <b>24</b> Lake Benton Community & Event Center        | <b>37</b> Country Side Nursery                  |
| <b>12</b> Lake Benton Library          | <b>25</b> Lake Benton Fire/Police Station             | <b>38</b> Knotty Pine Supper Club               |
| <b>13</b> Lake Benton Grocery          | <b>26</b> Benton Valley Manor/HRA                     | <b>39</b> Elkton Electric                       |



**30** (1 mi. W. on HWY 14)  
**38** (8 mi. W. off HWY 14)  
**39** (8 mi. W. in Elkton, SD)

**33** (3 mi. E. on the lake)  
**32** (7 mi. E. on HWY 14, Tyler)  
**2**  
**3**  
**34** (.5 mi. E. on HWY 14)  
**35** (1 mi. E. on HWY 14)  
**36** (4 mi. E on HWY 14)

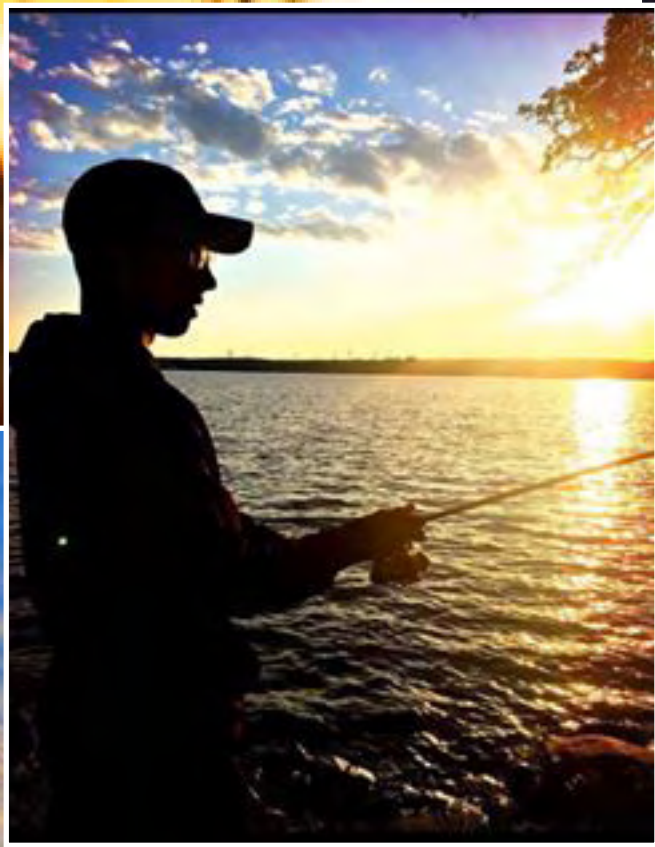


www.lakebenton.us | Chamber@LakeBenton.us  
 507-368-9577 Ext 2.

(3 mi. S. off HWY 75) **37** ↓



# Vacationer's Paradise



*Thank you to local residents for sharing their personal photos with the Chamber and allowing us to include them in our publication.*





# LINCOLN COUNTY PARKS

## NORWEGIAN CREEK COUNTY PARK

Norwegian Creek is located one mile north, and one mile east of the City of Lake Benton. Norwegian Creek has 108 campsites with electricity and water. Facilities include two picnic shelters, a bathhouse with showers, a fish-cleaning shed, RV dump station, a swimming beach, and two boat launches.

### CAMPING RATES:

Electricity & Water \$25.00 a night

Non-Electric \$20.00 a night

Tents \$18.00 a night

For seasonal rates call 507-368-9350

Rates subject to change.

## PICNIC POINT COUNTY PARK

Picnic Point is located eight miles north, three miles west, and one mile north of Lake Benton. The park is 43 acres located on the southern side of Lake Shaokatan. Picnic Point offers 30 campsites with electricity and water. It also has numerous sites without electricity. Also, Picnic Point has one picnic shelter, a swimming beach, two boat launches, a floating T-dock, a fish cleaning shed, and a RV dump station.

### CAMPING RATES:

Electricity & Water \$25.00 a night

Non-Electric \$20.00 a night

Tents \$18.00 a night

For seasonal rates call 507-368-9350

Rates subject to change.

## HOLE-IN-THE MOUNTAIN COUNTY PARK

Hole-In-The-Mountain Park is located on the western edge of Lake Benton just off Highway 14. There are 33 campsites with electricity and water, and 30 electrical sites located in the horse campground. The park is approximately 800 acres of woodland and prairie land. Throughout the park you will find historical sites along five miles of hiking/horse trails. Hole-In-The-Mountain Park also offers two picnic shelters. The newly renovated chalet can be rented for family reunions, graduation parties, and other functions. Cost is \$100 per day plus \$100 damage deposit.

### CAMPING RATES:

Electricity & Water \$25.00 a night

Non-Electric \$20.00 a night

Tents \$18.00 a night

For seasonal rates call 507-368-9350



FOR RESERVATIONS CALL 507-368-9350 or write to: Lincoln County Parks, P.O. Box 369, Lake Benton, MN 56149



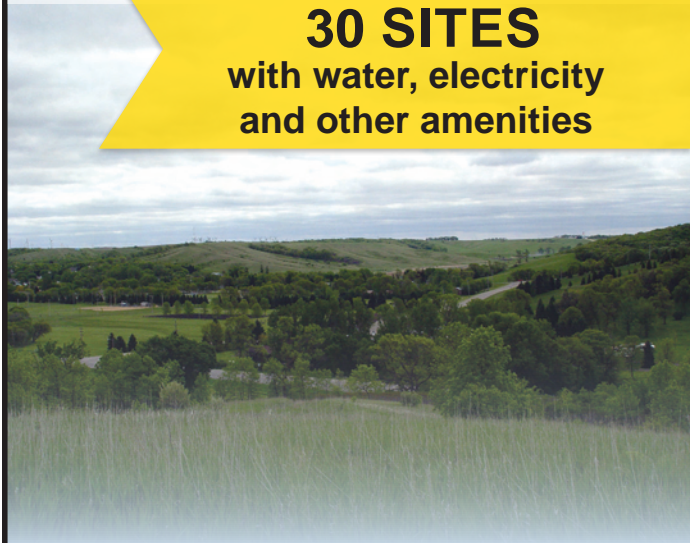


## Hole-in-the-Mountain Park and Horse Camp

Hole in the Mountain Horse Camp features

**30 SITES**  
with water, electricity  
and other amenities

The view from the horse camp is spectacular. The camp has five to seven miles of trails, electrical hookups, showers and restrooms. Protected by trees, high atop the hills, this is a calm, relaxing atmosphere for both campers and animals.





# Wooden Diamond B&B



Open year-round and located on the shores of Lake Benton Lake. A truly unique and memorable Bed and Breakfast experience! The "Parsonage Room" offers a large guest suite with private bath, kitchenette, and free wireless connectivity. Choose to be outdoors? The private deck overlooking the lake with your morning coffee and use of the fire-pit for those cool nights add to your enjoyment! Breakfast may be served in your room or in the three-season room. The "Farmhouse Room" takes you back to a simpler time with its comfy 4-poster beds and main floor ease. Each room will sleep up to 4 guests!

## Bill and Jenifer Vollmer

1593 Shady Shore Drive, Lake Benton, MN 56149  
(follow the signs on Highway 14)

Telephone (507) 828-3929  
e-mail: [billandjenifer@gmail.com](mailto:billandjenifer@gmail.com)  
Facebook: [WoodenDiamondB&B](https://www.facebook.com/WoodenDiamondB&B)  
*Find us on Airbnb!*



Providing Services to

### Business & Communities:

- Business & Economic Development
- Community Development
- Grant Services (Writing & Administration)
- Housing Management
- Small Cities Development Program
- Renewable Energy Development
- Maintenance Services

Contact us today to see how DSI can offer solutions to your business or community.

402 N. Harold Street / Ivanhoe, MN 56142

Call us at (507) 694-1552  
visit us on our webpage: [dsi-services.com](http://dsi-services.com)  
Follow us on Facebook: [Development Services, Inc.](https://www.facebook.com/DevelopmentServicesInc)

# Life on the lake is relaxing. Let us help make it simpler.

17 cabins, Restaurant, Bar & Off-Sale  
Pontoon, Kayak, and Ice House Rentals  
Bait & Tackle plus  
Fishing & Hunting Licenses

☎ 507-368-4399

[lakebentonresort@gmail.com](mailto:lakebentonresort@gmail.com)

325 Lakeshore Drive, Lake Benton, MN 56149



### Hours:

Mon - Thurs 8:00 a.m. - 9:00 p.m.  
Fri - Sat - Sun 8:00 a.m. - Close

Find us on Facebook @ Lake Benton Resort



# SADDLE HORSE HOLIDAY



The organizational meeting of the Dakota-Minnesota Saddle Horse Holiday was held at the Lorenzen Cafe in Lake Benton on March 23, 1947. Over the past years, the event has grown to include as many as eight hundred horses and a two-ring horse show that is held annually on the third Sunday of June. The Chamber and local businesses host various activities for families and children throughout the weekend celebration.

The Annual event begins with a trail ride at 10:00 a.m. on Sunday. The scenic trail takes the riders through our beautiful rolling hills and concludes at the parade route. The horses are an ever popular addition to our annual parade which takes place at noon. Our parade has also grown to include as many as 100+ units. The show begins at 1:00 p.m. at the arena, located at Horse Hill at the Hole-in-the-Mountain Park in Lake Benton. There are numerous classes and games/contests that take place with trophies and ribbons awarded. Please join us for a weekend of fun! There is something for everyone.

Please contact: Lynette Hauswedell 507-531-0178, Mike Hauswedell 507-531-0164 or Lori Hart 507-247-3401 for further information regarding the horse show and trail ride. Please contact the Chamber at 507-368-9577 regarding the parade.

## SADDLE HORSE HOLIDAY

June 17-19, 2022 and  
June 16-18, 2023

Fireworks - Family Fun Day - Hot Dog Day  
Opera House Talent Show - Citizen and  
Organization of the Year presentation -  
Fireman's Dance - Parade - Horse Show

*Fun for the entire family!*





# LAKE BENTON LAKE



Lake Benton Lake: one of the most popular lakes in southern Minnesota.

It's no wonder Lake Benton Lake is so well known. This famous lake has an area of 2,875 acres, making it the sixth largest lake in southern Minnesota. Fishermen from throughout the upper Midwest come the year around to catch game fish, including walleye, northern pike, and large mouth bass. Pan fishermen enjoy catching beautiful yellow perch, crappies, bluegills, and bullheads.

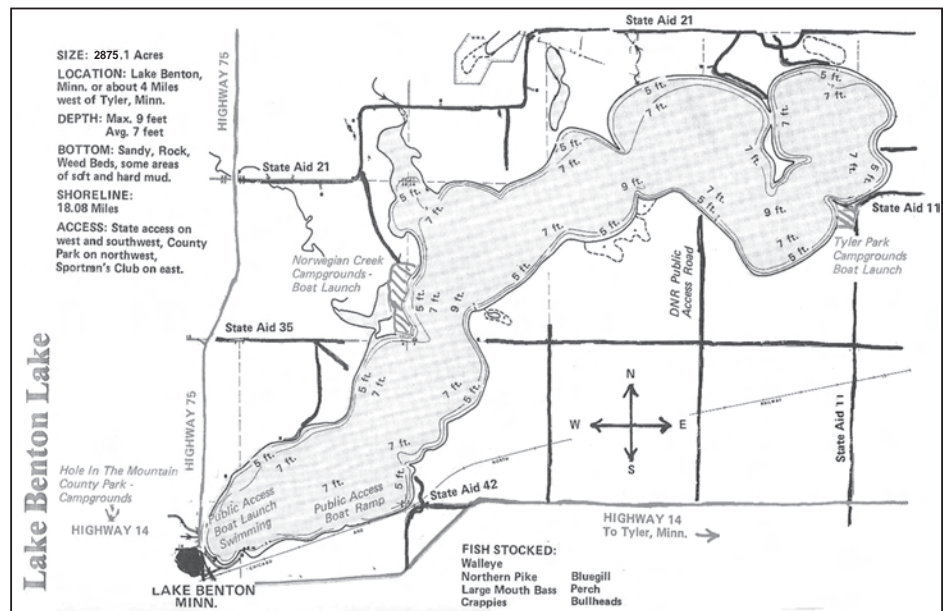
Fishermen can be seen daily on the lake, in their boats and shore fishing, as they enjoy the peaceful and relaxing atmosphere of a pleasant summer day. In the winter a "little town" appears as the ice fishermen arrive with their unique houses. The aeration system, maintained by our local Sportsmen's Club, prevents any winter-kill of fish. The fertility of this prairie lake provides the nutrients needed to produce fish that are above average in size and numbers. Many trophy walleye that are caught range from eight to twelve pounds. Walleye weighing two to four lbs. are common. Many perch are over one pound and many exceed two pounds in size.

The DNR stocks the lake with more than two million walleye fry every two years. This is in addition to those

produced in the lake itself.

Fishermen aren't the only ones who enjoy the lake. Boating and water skiing are always popular in the summertime. Swimmers gather at the beaches for a day in the sun. In the winter, for a cure of the winter blues, snowmobiling is a fun sport.

The Lake Benton Lake Association is continually involved in projects to improve the water quality of the lake. They realize that a good lake is not only an asset to the residents who live on the lake, but it is also an economic asset to the local economy as well.





# THE HOLE-IN-THE-MOUNTAIN PRAIRIE

The Hole-in-the-Mountain Prairie is an 1,157-acre prairie and oak savanna wildlife preserve located south of Lake Benton along Highway 75. The preserve is part of a larger glacial escarpment that runs from southwest Minnesota through northeast South Dakota. Locally, this hilly region is known as Buffalo Ridge.

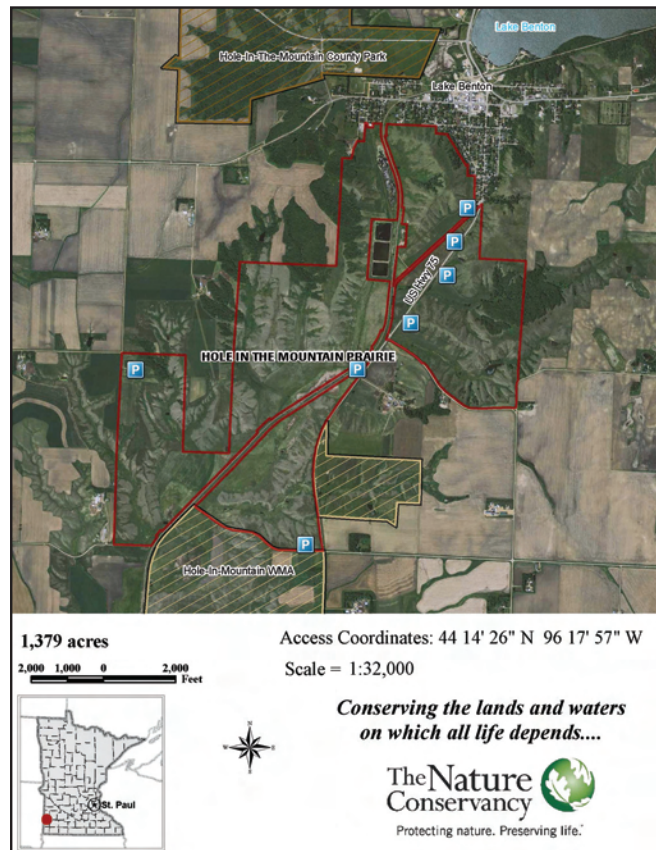
Its undulating terrain is carpeted in wildflowers and alive with birds and butterflies during summer. The preserve provides excellent habitat for rare prairie-dependent insects (including 25 species of butterflies), nesting waterfowl, passerines, raptors, and other grassland birds.

The Nature Conservancy encourages you to visit the preserve. We also strive to maintain as natural a setting as possible while minimizing wildlife disturbance. The preserve is open during daylight hours for hiking, birdwatching, photography, and any other non-consumptive uses. We remind you that access is walk-in only (no horses, mountain bikes, ATVs, or pets) from the roads around the preserve. Vehicles can be parked near the main sign near the railroad, one mile south of Lake Benton along Highway 75 or on the edge of the gravel road on the south side of the preserve. Removal of plants, animals, or any natural materials is prohibited. If you pack it in, please pack it out!

The preserve harbors more than 60 species of grasses, sedges, and rushes, 10 species of trees and shrubs and 200 species of wildflowers. Native plants include six of special concern: prairie moonwort, small-leaved pussytoes, small white lady's slipper, red threeawn, soft goldenrod, and slender milk-vetch.

Most unique to Hole-in-the Mountain are its butterflies, thriving on the native grasses and forbs protected here: The Dakota skipper and Ottoe skipper, both threatened species; and the Uncas skipper (*Hesperia uncas*), an endangered species. Visitors may also catch glimpses of a suite of prairie birds, mammals, and other insects including badger, coyote, white-tailed deer, wild turkey, red-tailed hawk, meadowlark, and bobolink.

The prairie valley is the headwaters of Flandreau Creek, which runs in a southwesterly direction toward the



Big Sioux River. Indians called the half-mile-wide valley "Mountain Pass" or "Hole-in-the-Mountain." This preserve is owned and operated by The Nature Conservancy as part of a larger project that strives to enhance habitat across the Prairie Coteau region of Minnesota and South Dakota by working to protect native rangelands and wildlife through sound habitat management while working in partnership with the farmers, ranchers, and public agencies who share our interest in preserving this incredible landscape. Hole-In-The-Mountain Preserve represents in full beauty what the southern end of the larger 2.4-million-acre Prairie Coteau region might have looked like prior to European settlement.





# KNOTTY PINE SUPPER CLUB



Join us in our cozy lounge with big screen TV or relax in our spacious dining area.



Delicious Hand Cut Steaks  
 Nightly Seafood Specials | Chicken | BBQ Ribs  
 Homemade Soups Everyday  
 Slow Roasted Prime Rib on Fridays and Saturdays  
 Something for Everyone to Enjoy!

Rehearsal Dinners | Banquets  
 Birthday Parties | Anniversaries  
 Special Occasions

**Open Wednesday-Sunday at 5 p.m.**

Located 1½ miles east of Elkton, SD  
**(507) 548-3781**  
[www.TheKnottyPineSupperClub.com](http://www.TheKnottyPineSupperClub.com)



**Fast. Reliable. Unlimited.**  
**No contracts or data caps.**  
**No hassle or worries.**

*What are you waiting for?*  
**Join ITC's Fiber-Fast network today!**

**Internet**  
**Phone • TV**



**Check for Availability!**  
**1-800-417-8667**  
[www.itc-web.com](http://www.itc-web.com)

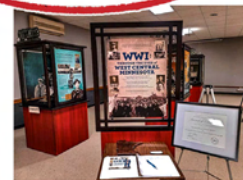
# LAKE BENTON Minnesota

AREA COMMUNITY & EVENT CENTER

**BOOK YOUR NEXT EVENT WITH US!**



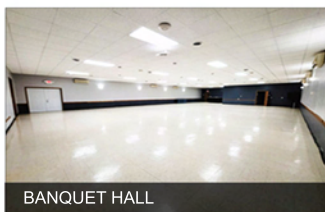
GALLERY ROOM



COMMERCIAL KITCHEN

## AVAILABLE AMENITIES

Full Commercial Kitchen  
 w/ Walk-in Cooler, Tables &  
 Chairs, Stage, Internet,  
 Sound System, TVs, Video  
 Distribution, Projector



BANQUET HALL

**CONTACT US TODAY**  
**507.368.4641 ext. 4**  
[info@lbeventcenter.com](mailto:info@lbeventcenter.com)



[@LAKEBENTONEVENTS](https://www.facebook.com/LakeBentonEvents)





# DINING

## COUNTRY HOUSE RESTAURANT AND CATERING

Located on East Highway 14, Lake Benton. Enjoy fine dining by indulging in a mouth watering four-course meal or dine casually in the lower level. They also offer catering, take out and group packages. Open Thursday–Sunday evenings all year long. (507-368-4223) Facebook: CountryHouseSupperClub

## EXPRESSWAY

Located on US Highway 75 and Benton Street in downtown Lake Benton. The ExpressWay features Hot Stuff Pizza, Smash Hit Subs, sandwiches and many convenience grocery items. (507-368-4204)

## KNOTTY PINE SUPPER CLUB

Located near Elkton, SD. The Knotty Pine offers a gourmet menu, specializing in their well-known prime rib and garlic mashed potatoes. Their sports bar is a great place to watch the games with your friends. They also offer a party room for special occasions. (507-548-3781 or 1-800-442-7977)

## LAKE BENTON RESORT

Delicious sit down and take-out food, including pizza, sandwiches, appetizers and more. Full bar in the restaurant area and off-sale liquors. (507-368-4399) Facebook: LakeBentonResort

## THE LEGACY BISTRO

Located at 116 Center Street, Lake Benton. Enjoy bistro style cuisine for your breakfast and lunches. (507-368-3400)

# COUNTRY HOUSE Restaurant & Catering

Casual Family Dining | Take out | Cocktails

Private Party Room | Private Groups by Reservation

Steaks | Seafood | Broasted Chicken | Sandwiches



Open at 5:00 p.m., Thursday - Sunday

Catering in southeast South Dakota  
and southwest Minnesota

**SERVING YOU SINCE 1983**

East Hwy. 14, Lake Benton, MN

New Email: [CountryHouseLB@gmail.com](mailto:CountryHouseLB@gmail.com)

Phone: 507-368-4223 | Cell: 507-829-4843



Find us on Facebook!



# LODGING

## LAKE BENTON RESORT

Now under new ownership, the 17 units are available year-round for ice fishing, hunting and summer activities. All units are clean and comfortable, including cable TV and kitchenettes. Keep the Lake Benton Resort in mind when making reservations for weddings, reunions, hunting, fishing and vacation plans. They also offer pontoon, ice house and kayak rentals. Food, full bar and off-sale available on-site. (507-368-4399) Facebook: LakeBentonResort Email: Lake Benton Resort@gmail.com

## WOODEN DIAMOND B&B

The Wooden Diamond is a year-round B&B, subtly hidden on the shores of Lake Benton Lake, offering a truly unique and memorable experience! The "Parsonage Room" offers a large guest suite with private bath, kitchenette, and free wireless connectivity. Choose to be outdoors? The private deck overlooking the lake with your morning coffee and use of the fire-pit for those cool nights add to your enjoyment! Breakfast may be served in your room or in the three-season room. The "Farmhouse Room" takes you back to a simpler time with its comfy 4-poster beds and main floor ease. Each room will sleep up to 4 guests!. Call Bill and Jenifer for reservations (507) 828-3929 or email: Billandjenifer@gmail.com Facebook: WoodenDiamondB&B. Find us on Airbnb!

# Kjergaard Sports

1951 200<sup>th</sup> Avenue | Lake Benton, MN  
507-368-4696

**WHERE THE SERVICE AND THE PRICE ARE WORTH THE TRIP!**



**Hours:**  
Monday-Saturday 9-7  
Sunday 1-6

- Large selection of firearms
- Full line of Beretta, Benelli & Browning
- Dog training supplies
- Hunting clothing items
- Reloading Supplies
- Danner Boots
- Under Armour
- Buy, Sell and Trade!

[www.kjergaardsports.com](http://www.kjergaardsports.com)  
[kjergaardguns@itctel.com](mailto:kjergaardguns@itctel.com)

Located from Lake Benton: 4 miles north on Hwy 75, 1 mile east on Co. 13, ½ mile north on 200<sup>th</sup> Ave



# Lake Benton Grocery

A small-town grocery store that specializes in customer service, fresh cut meats, fresh produce, and great values.  
Serving others is why we do it.



104 E. Benton Street  
Lake Benton, MN 56149  
507-368-4585

Facebook: BoltLBGrocery

Open: 8:30 a.m.-6:30 p.m., Mon-Sat  
10 a.m.-2 p.m., Sunday

# Lake Benton Realty, Inc.

*Lisa J. Willert*  
Broker



Phone: 507-530-5361

E-mail: [lisa.willert@outlook.com](mailto:lisa.willert@outlook.com)

Website: [www.lakebentonrealty.com](http://www.lakebentonrealty.com)

1637 Edgewater Dr., Lake Benton, MN 56149

# Southwest Sanitation

Marshall, MN  
507-532-4500



Locally owned & operated by Dan & Scott Ritter

Commercial • Rural • Rolloffs • Residential • Recycling • Portable Toilets

# BUFFALO RIDGE ANTIQUE SHOP

108 Benton Street, Lake Benton, MN 56149

507-215-5584

Owner: Shirley Sandberg

Antiques, Collectibles, Furniture, Lamps, and more!



Summer Hours: 10 a.m. - 4 p.m. (Closed Wednesdays)

Winter Hours: 11 a.m. - 2 p.m. (Closed Wednesdays)

# ROGGENBUCK

## Tree Service



**TREE-TRIMMING**

**TREE REMOVAL**

**STUMP GRINDING**

876 West Benton St. | Lake Benton, MN  
507-368-4833 (Work) | 507-820-2408 (Cell)



# BUSINESSES AND SPECIALTY SHOPS

The beauty and charm of Lake Benton is magnified by the shopping opportunities available. You will find our fine stores and shops ready to cater to your every need!

## **AVERA LAKE BENTON MEDICAL CLINIC**

109 E. Benton St. (507-368-4323) Open Mon/Wed/Fri

## **BLONDIE'S HAIR STUDIO**

103 W. Benton St. (507-368-4441). Hair and beauty salon.

## **BUFFALO RIDGE ANTIQUES**

has furniture, vintage clothing, collectible and antiques galore located at 108 East Benton. (507-215-5584) for appointment.

## **BUFFALO RIDGE STATE AGENCY**

located at 107 N. Center St. (507-368-6693). For all your insurance needs.

## **COUNTRY SIDE NURSERY**

A local nursery providing landscaping services and retail sale of flowers, plants, trees and shrubs at their shop, located at 1186 County Road 118 in rural Lake Benton. Call Steve or Penny at (507-368-9622)

## **CPR – COURTEOUS PROFESSIONAL REPAIR**

Is located at 309 North Center Street. Owner, Larry Robbins, has over 40 years of experience repairing anything from bicycles to industrial robots.

## **CS NATURAL HEALTH**

A local Natural Health consultant. Located at 101 W. Hwy 14. Call Sandra at (507-368-9224)

## **DOG TRAINING BY JESS**

Safe, fun and effective dog training for all breeds and ages! Contact Jess at (612-930-3641)

## **DSI (DEVELOPMENT SERVICES INC.)**

Providing services and solutions to businesses and communities for economic development and management. (507-694-1552)

## **ELKTON ELECTRIC**

101 Elk St. So. Elkton, SD (605-542-2000) Licensed electrician.

## **EXPRESSWAY**

One-stop shop for gas, food, snacks and beverages. (507-368-4204)

## **FIRST SECURITY BANK**

located at 107 N. Center St. (507-368-4261). Help with all your full service banking needs.

## **GAIL'S GOURMET GOODIES**

Unique and delicious baked goods, delivered fresh! Call Gail at (507-368-4302)

## **HAPPY HOUND GROOMING**

is located at 109 South Center Street, in downtown Lake Benton. The owner/operator offers dog grooming by a certified dog groomer. Call for appointment. (507-530-1251)

## **HARTQUIST FUNERAL CHAPEL**

102 S. Fremont St. Lake Benton, MN (507-368-9385) Providing funeral and cremation services.

## **KINNER & CO. LTD.**

104 S. Center St. Lake Benton, MN. Local Accounting firm, to provide assistance with taxes, bookkeeping and investments. Contact Jenny at (507-368-2711)

## **KJERGAARD SPORTS**

is the largest gunshop in the area, just outside of Lake Benton. Call Steve at (507-368-4696) Facebook: KjergaardSports

## **LAKE BENTON GROCERY**

located at 104 E. Benton St. (507-368-4585). Offering grocery, produce, meat, bakery and floral.

## **LAKE BENTON REALTY**

1637 Edgewater Dr. (507-530-5361) – real estate broker – email: lisa.willert@outlook.com

## **LAKE BENTON STORAGE**

for your offsite storage needs. Email: LBStorag@itctel.com (507) 829-6693

## **LAKE BENTON VARIETY STORE**

102 S. Center St. Lake Benton, MN (507-820-1233) A unique variety of refurbished and second-hand items, including custom t-shirt printing.

## **LAKE BENTON VALLEY JOURNAL**

Part of Buffalo Ridge Newspapers located at 120 N. Center (Tyler, Lake Benton and Hendricks). (507-368-4604)

## **MARY'S SHOPPE**

located at 120 N. Center St. (507-368-9530). Hair and beauty salon.

## **MULDER PRODUCE AND GARDEN GATE GREENHOUSE**

402 E. Benton St. Lake Benton, MN (605-651-3798) Seasonal Farmer's Market and Greenhouse

## **PATRICK HAYNES COMPUTERS**

Local owner/technician providing computer repairs, software/hardware upgrades, advice and training. Call Pat at (507-368-2755)

## **PLUTO BOES LEGAL PLLC**

A law firm that cares for you and your family, including services related to Medical Assistance, Disability Assistance and Estate Planning. Call (1-866-457-3131) to schedule a personal appointment. Located at 106 N. Center Street in downtown Lake Benton.

## **RETHWISCH & SON**

101 N. Center St., Lake Benton, MN (507-368-4243) Local hardware store and lumber supplier.

## **ROGGENBUCK TREE SERVICE**

876 W. Benton St. Lake Benton, MN (507-368-4833) Tree trimming and removal.

## **S&E AUTO CLINIC**

located at 108 W. Benton St. (507-368-9288). Automotive repairs.

## **STEVO'S PARTY BUS**

108 N. Jesse St. Lake Benton, MN (507-828-6875) Professional bus and coach company.

## **WESTERN VETERINARY CLINIC**

located 4 miles east of Lake Benton on Hwy 14, at 1495 Cty Hwy 6 (507-368-4251).



# Covering all the news

# *on the Buffalo Ridge!*



## Buffalo Ridge Newspapers

Tyler Tribute • Hendricks Pioneer • Lake Benton Valley Journal

## Valley Journal

Lake Benton

Lincoln County's oldest newspaper, continuing the Lake Benton News

120 N. Center, PO Box 328

Lake Benton, MN 56149

507-368-4604

lbveditor@gmail.com

## Tyler Tribute



251 N. Tyler Street, PO Box Q

Tyler, MN 56178

507-247-5502

tylertribute@gmail.com

## Hendricks PIONEER



202 S. Main Street Plaza, PO Box 5

Hendricks, MN 56136

507-275-3197

hendrickspioneer@gmail.com



# Lake Benton Economic Development Authority

Assisting with the expansion of existing business and the development of new business.

The members of the Economic Development Authority (E.D.A.) board work together with other organizations, individuals, and agencies so that Lake Benton can reach its business potential and keep abreast of the changes and progress occurring in the business world.



## COMMERCIAL AND RESIDENTIAL LOTS AVAILABLE

For business locations, inquire about the lots available in the Johnson Commercial Park development.

For residential locations, inquire about apartment availability and the newly developed residential lots in the Mork and Giles Addition.

**Please contact the Lake Benton Economic Development Authority at 507-368-4641 ext. 1**















## 2022

January 14  
 January 29  
 March 12  
 March 19  
 March 26  
 April 1-3, 8-10  
 May 14  
 May 27-28  
 May 30  
 June 4  
 June 16-18  
 June-July TBD  
 July 16  
 July 21-24, 27-31  
 September 3  
 October 8  
 October 31  
 November 11  
 November 10-13, 17-20  
 Nov 26-Dec 17  
 December 3  
 December 9  
 December 10

## 2023

January 13 Sportsman's Club Annual Meeting - Fish Fry  
 January 28 Sportsman's Club Ice Fishing Tournament  
 TBD LB Opera House Season Opener "Broadway Meets Lake Benton"  
 March 18 Sportsman's Club Wild Game Feed  
 March 25 LB Area Foundation Gala - LB Community & Event Ctr  
 TBD LB Opera House Spring Play - "The Odd Couple" (2022)  
 May 13 Minnesota Walleye Opener  
 May 26-27 City Wide Rummage Sales  
 May 29 Memorial Day Program  
 June 3 Sportsmen's Club Walleye Fishing Tournament  
 June 15-17 Saddle Horse Holiday Weekend  
 June-July TBD Lake Benton Lake Association - Pork Sandwich Fundraiser/Member Drive  
 July 15 Kjergaard Sports Buffalo Ridge Demo Shoot - Kjergaard Sports  
 TBD Lake Benton Opera House Summer Musical "Newsies" (2022)  
 September 2 King of Trails Market Day - along Highway 75  
 November TBD LB Opera House Children's Theatre  
 October 31 Chamber Halloween "Trunk or Treat on Center Street" - Heritage Center  
 November 11 Veteran's Day Program - Lake Benton School  
 TBD LB Opera House Fall Musical "Plaid Tidings" (2022)  
 Nov 25-Dec 16 Lake Benton Businesses - Holiday Open House Events  
 December 2 Lake Benton Opera House Christmas Show  
 December 8 Chamber Residential Holiday Lighting Contest  
 December 9 Santa Claus Day - Lake Benton Elementary School

