

Lake Benton

Minnesota

2024-2025 Visitor's Guide

Make your memories in Lake Benton

*Enjoy our
4-Season Funland!*

**LODGING, DINING
& SHOPPING**

**RECREATION
& PARKS**

**CALENDAR
OF EVENTS**

mn EXPLORE
MINNESOTA

www.lakebenton.us

f Find us on
Facebook

Cover Photo by Dawn Dykstra - Photo Contest First Place Winner

ADVERTISERS INDEX

DINING, ENTERTAINMENT AND RECREATION

Country House Restaurant & Catering	28
Hideaway Cafe and Coffee House	27
Hole-in-the-Mountain Prairie	26
Knotty Pine Supper Club	27
Lake Benton Area Community & Event Center	27
Lake Benton Opera House	16/17
Lake Benton Resort	23
Lincoln County Parks	21-22
Saddle Horse Holiday	24
Wooden Diamond B&B	23

GROCERIES

Lake Benton Grocery	30
---------------------	----

INSURANCE, REAL ESTATE, FINANCIAL

Buffalo Ridge State Agency, Inc. - Lake Benton	8
First Security Bank	8
Kinner & Company Ltd	8
Lake Benton Realty	30

HEALTHCARE

Dynamic Health Chiropractic	10
Pipestone Medical Center	12

MEDIA

Buffalo Ridge Newspapers/Lake Benton Valley Journal	32
Christensen Broadcasting	12

SERVICES/ORGANIZATIONS

Allele Clean Energy/Windpower	11
City of Lake Benton/City Council	2-4
Churches	6
Development Services Inc. (DSI)	23
Elkton Electric	7
Hartquist Funeral Home	10
Heritage Center	9
Interstate Telecommunications (ITC)	8
Lake Benton Area Foundation	7
Lake Benton Area Historical Society	5
Lake Benton EDA	33
Lake Benton Elementary School	10
Lake Benton Lake Association	13
Lake Benton Library	14
Lake Benton Sportsmen's Club	5
Lake Benton Storage	13
Lincoln County Enterprise Dev. Corp.	8
Lincoln County HRA	13
Lincoln-Pipestone Rural Water	10
Palisades Oil & Propane	7
Roggenbuck Tree Service	30
S & E Auto Clinic	10
Southwest Sanitation	30
Western Vet Clinic	7

SHOPS AND SPECIALTY

Buffalo Ridge Antiques	30
Kjergaard Sports	29

LAKE BENTON CITY COUNCIL WELCOMES YOU!



A warm welcome is extended to each of you and we hope your stay, however long, is enjoyable and rewarding. If we can be of any assistance, please contact the city office at (507) 368-4641, ext. 1.

Lake Benton is a friendly, progressive community and we extend the invitation to have you join us as a resident. To assist those who are contemplating a business venture in the community, we offer the able assistance of the city's Economic Development Authority.

WELCOME TO LAKE BENTON

On behalf of the City Council, it is my pleasure to welcome you to the City of Lake Benton.

Lake Benton is located at the crossroads of US Highway 75 and US Highway 14 in southwestern Minnesota. Whether you are visiting or have chosen to live in Lake Benton, I think you will be surprised at all our little town has to offer. As I was growing up, Lake Benton was called the “Four Season Funland,” because there is always something to do here during every season of the year.

Lake Benton has a variety of activities and conveniences to offer.

- The beautiful lake extends seven miles and covers 2,875 acres. Come and enjoy a day of fishing, waterskiing, swimming, boating or camping.
- “Original Wind Power Capital of the Midwest” – hundreds of wind turbines decorate the landscape surrounding our scenic community. Tours of a locally owned wind tower are available.
- Heritage Museum and Wind Power Learning Center
- Public Library
- Excellent elementary school
- Lake Benton Opera House for fine theatre/entertainment
- The Hole-in-the-Mountain County Park offers camping, hiking, horseback riding trails and a newly renovated Chalet, available for gatherings and entertaining.
- Horse Hill overlooks Lake Benton, as part of the Hole-in-the-Mountain County Park.
- Norwegian Creek County Park offers camping, boat access, playgrounds, beach and picnic areas.
- The Saddle Horse Holiday community celebration is held annually on Father’s Day weekend.
- The Lake Benton Fire Department Street Dance is held annually on Saturday night during Saddle Horse Holiday weekend.
- Lake Benton Grocery for all your food and deli needs.
- Hideaway Cafe is open for breakfast and lunch.
- The Country House Supper Club is open for dinner and catering.
- The Lake Benton Area Community & Event center offers a meeting/banquet space.
- Lake Benton Resort offers lodging on the lakeshore, plus a restaurant/bar (for lunch & dinner) and an off-sale liquor store.
- The Wooden Diamond B&B offers lodging on the east lake shore.
- Delightful specialty and antique shops.
- Station One offers fuel and food for take-out or dine-in.
- Lake Benton Avera Medical Clinic
- Seven beautiful houses of worship.
- Homer’s Bar and Grill is open for late lunch and dinner, including an off-sale liquor store.

We are proud of our community and believe you will find that we have much to offer.

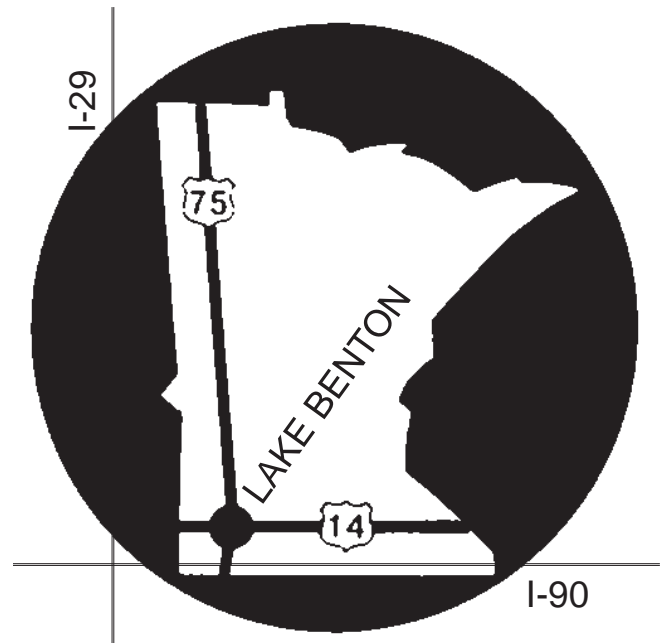
Mayor Mike Carpenter



OUR LOCATION

Lake Benton (pop. 684) is located in southwestern Minnesota at the crossroads of U. S. Highways 75 and 14. Our community lies in a scenic valley in southern Lincoln County on the shores of beautiful Lake Benton. The city is located 180 miles southwest of Minneapolis and 28 miles east of Brookings, S.D. The city limits encompass 2,300 acres, making Lake Benton geographically the largest of the county’s five cities.

Lake Benton and its vicinity includes some of the highest elevation points in Minnesota. The area in and around Lake Benton is significantly different from any other city in the county. This is due to the Bemis Moraine, a glacial ridge, which forms the drainage divide between the Missouri and Mississippi River basins.



NEW RESIDENT INFORMATION

ELECTRICAL HOOKUP

Otter Tail Power Co. - District Office in Morris, 1-800-257-4044

Lyon-Lincoln Electric Cooperative - 507-247-5505 or 1-800-927-6276

WATER/SANITATION SERVICE

City Office - 507-368-4641, ext. 1

TELEPHONE/INTERNET SERVICE

Interstate Telecommunications Cooperative (ITC) - District Office/
Clear Lake, S.D., 605-874-2181 or 1-800-417-8667

MVTV Wireless Internet - 1790 US HWY 212, Granite Falls, MN 56241
(320)564-4807

CABLE TV

Mediacom - 1-800-332-0245 (Billing); 24-hour service 1-800-422-1473
(Repair)

Interstate Telecommunications Cooperative (ITC) - 800-417-8667

WEEKLY NEWSPAPER

Lake Benton Valley Journal - 120 North Center St., 507-368-4604

LAKE BENTON AREA CHAMBER OF COMMERCE

106 S Center St., 507-368-9577, Chamber@LakeBenton.us

LAKE BENTON ECONOMIC DEVELOPMENT AUTHORITY

106 S. Center St., 507-368-4641, ext. 1, benton@itctel.com

LAKE BENTON CITY OFFICE

106 S. Center St., 507-368-4641, ext. 1, benton@itctel.com
Open Monday-Friday, 8:00 a.m. - 4:00 p.m.

CITY/SCHOOL PARKS

Lake Benton Elementary School Park/Playground

Public facility located at South Garfield and East Bluff Street.

Lakeside City Park

N. Highway 75 and west shore of Lake Benton, 507-368-4641, ext. 1
Shelter house with water and electricity, grills, boat ramp, fishing pier,
handicap-accessible dock and playground equipment.

West Side Field/DeZeeuw Field

West end of Benton Street on north side. Includes softball diamonds
and playground equipment.

SERVICE NUMBERS

EMERGENCY

Call 911

LINCOLN COUNTY SHERIFF'S OFFICE

(Serving the City of Lake Benton)

507-694-1664

433 W. Rotherwood, Ivanhoe, MN 56142

LAKE BENTON FIRE DEPARTMENT

Call 911

West Benton St., Lake Benton, MN

LAKE BENTON FIRST RESPONDERS/ RESCUE UNIT

Call 911

AMBULANCES AND HOSPITALS

Located in Tyler, Ivanhoe, Hendricks and
Pipestone: Call 911 or check local listings.

LAKE BENTON AREA COMMUNITY & EVENT CENTER

507-368-4641, ext. 4

110 E. Benton St., Lake Benton, MN

LAKE BENTON DINER'S CLUB

507-368-9564

106 South Center St., Lake Benton, MN

LAKE BENTON FOOD ASSISTANCE

507-368-3663 (Food) - Food Shelf

507-368-9577 - NAPS Food Distribution

106 South Center St., Lake Benton, MN

LAKE BENTON PUBLIC LIBRARY

507-368-4641, ext. 3

110 E. Benton St., Lake Benton, MN

U.S. POST OFFICE

507-368-4229

126 E. Benton St., Lake Benton, MN

LINCOLN COUNTY VETERAN SERVICES

507-694-1033

319 N. Rebecca St., Ivanhoe, MN 56142

City of Lake Benton

LINCOLN COUNTY

507-368-4641

507-368-4806 (FAX)

HISTORICAL SOCIETY

The first meeting of the Lake Benton Area Historical Society was held September 4, 1996. The mission statement of the society is as follows: "The mission of the Lake Benton Area Historical Society shall be the collection, preservation, and dissemination of knowledge about the history of the Lake Benton area and to relate the history to that of the State of Minnesota." The society became a member of the Minnesota Historical Society in May, 1997.

Groundbreaking ceremonies of the "The Heritage and Windpower Learning Center of Southwestern Minnesota" were held June 17, 2000. Dedication of the building was held on October 13, 2001. Our beautiful museum is located at **106 South Center Street, at the Heritage Center in downtown Lake Benton.**

Donation of items unique to the Lake Benton community are gratefully accepted, as well as those that are loaned for special exhibits. Visitors are welcome during regular visiting hours or any time by special appointment. Many groups enjoy our museum and learning center, including school classes and youth groups. Tours are also given to the windpower sites.

Please contact our office for further information at (507) 368-9577. Hours are: 8:00 a.m. to 4:00 p.m.- Monday through Friday. By appointment on Saturday and Sunday. E-mail address: lakebentonhistsociety@gmail.com

Lake Benton Area Historical Society

Non-Profit 501(c)3 ~ Donations Tax Deductible



Your Donations Help To

Preserve the Past

Focus on the Present

Enhance the Future

106 S Center St. PO Box 267

lakebentonhistsociety@gmail.com www.lakebenton.us

SERVICE CLUBS AND ORGANIZATIONS

4-H Clubs (Cross Country, Diamond Lake, Verdi Go-Getters) • Lake Benton Opera House • Farmerettes Extension Club • Henry Sollie American Legion Auxiliary • Henry Sollie American Legion Post #10 • Lake Benton Lake Association • Lake Benton Area Chamber of Commerce • Lake Benton Area Foundation • Lake Benton Area Historical Society • Lake Benton Convention & Visitor Bureau • Lake Benton Economic Development Authority • Lake Benton Fire Department • Lake Benton First Responders/Rescue Squad • Lake Benton Volunteers for Education • Lake Benton Housing and Redevelopment Authority • Lake Benton Sportsman's Club • Sons of the American Legion • Town and Country Study Club • Valley Extension Club • Lake Benton Friends of the Library • Lake Benton Fiber Guild • Lincoln County Veterans Services • Lake Benton Diner's Club • Lake Benton Food Shelf

The Lake Benton Sportsmen's Club



Taking care of our lake and our wildlife.

The Lake Benton Sportsmen's Club was organized on February 14, 1952. The goal of the organization is to promote good sportsmanship and for the preservation of fish and wildlife.

The Lake Benton Sportsmen's Club has installed and operated the lake aeration system since the fall of 1980. They have also been instrumental in promoting and funding gun training, pheasant feeding, shelter house and fish cleaning facility construction, public access purchase and Al's Landing, lakeshore cleanup, and habitat improvement. They also help fund the indoor shooting range west of Tyler, MN.

The club holds its meetings the fourth Wednesday of the month, September-May, in Lake Benton. The annual Ice Fishing Tournament is the last Saturday of January, and the Summer Walleye Tournament is on the first Saturday of June; Annual Wild Game Feed is on the third Saturday in March; and the Annual Meeting (Fish Fry) is the second Saturday in January. For membership information see our Facebook page or contact Scott Christensen.

LAKE BENTON CHURCHES



As you overlook the hills to the southwest, you will see a cross on the hill. It was placed there in 1976 during our nation's bicentennial, through the united efforts of an ecumenical committee who wanted to give tribute to our rich religious heritage.

As a visitor, you will be warmly welcomed by whichever church you choose to attend. Each church also has a variety of organizations that would enjoy your presence as well. Just call the church office for information regarding the meeting time.

FIRST BAPTIST

507-368-4319

504 US HWY 75 North, Lake Benton, MN 56149

Check local listings for times

KINGDOM HALL OF JEHOVAH'S WITNESSES

507-368-9365

E. Highway 14

Sunday - 10:00 a.m.

Wednesday - 7:00 p.m.

LIGHTHOUSE ASSEMBLY

507-368-9303

1966 Cty Rd. 124

Norwegian Creek Park Road

Sunday School - 9:30 a.m.

Sunday Worship - 10:30 a.m.

Wednesday Bible Study - 7:00 p.m.

ST. GENEVIEVE CATHOLIC AREA FAITH COMMUNITY

507-368-4232

119 S. Sherman St.

Check local listings for times

ST. JOHN'S EVANGELICAL LUTHERAN (WELS)

507-368-4656

113 S. Garfield St.

Sunday School and Sunday Worship - check local listings for times

UNITED METHODIST

507-368-9395

102 W. Bluff St.

Check local listings for times

GRACE LUTHERAN (ELCA)

507-368-4243

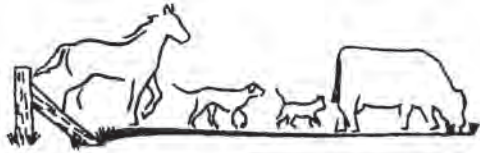
101 S. Sherman St.

Sunday School and Sunday Worship - check local listings for times



Western Veterinary Clinic

4 miles east of Lake Benton
on Highway 14



1495 Cty. Hwy. 6
Tyler, MN 56178
Phone: 507-247-5410
Phone: 507-368-4251



Veterinarians:
Dr. Loren Johnson
Dr. Roxanne Nielsen
Dr. Cassy Postler



Elkton Electric
we'll light you up

605-690-0167 • 101 Elk St., Elkton, SD 57026

JUSTIN BUSHMAN
OWNER



Make the Switch!

- PROPANE & OIL DELIVERY SERVICE
- FREE TANK SWITCH OUT
- NO TANK RENT/LEASE FEE
- MULTIPLE CONTRACT OPTIONS



Palisades Oil & Propane

Call today!

605-594-3465

25353 485th Ave | Garretson, SD

Palisades offers beer,
liquor, food, and a full kitchen menu



Lake Benton
AREA FOUNDATION
An Affiliate of Southwest Initiative Foundation
PO BOX 145 | LAKE BENTON, MN 56149

Continuing to make Lake Benton
an even better place to
live, work, and play.

GIVE WHERE YOU LIVE

What started as a group of local citizens who were looking for a way to help those who wanted to give back to the community has grown into what we now know as the Lake Benton Area Foundation.

As an affiliate of SWIF, the LBAF is dedicated to promoting a greater quality of life for the Lake Benton Area. We achieve this by helping to fund specific community projects or area organizations. These projects and organizations all enhance the community we consider home, making a better life for present and future generations.

Following true to the foundation's mission of giving back to our community, we are currently working with the City of Lake Benton to help raise funds for Lakeside Park, which will remain the focus of the LBAF's community project for years to come. Lakeside Park Project provides a safe place for our community to connect, enjoy the outdoors, and be active.

Board Members Include:
Jodi Greer, Jess Gums, Jodi Lichtsinn, Amy Lueck, Shaelean Melchor, Caitlin Petersen, Nikki Prosch, Vince Robinson, and Margo Suiter.

Scan the QR codes below to make an online donation to the LBAF Endowment or Lakeside Park Funds. Your donation will help enhance the quality of life in Lake Benton for generations to come!

LBAF Endowment Fund



Lakeside Park Fund



KINNER & COMPANY LTD

Taxes, QuickBooks and Investments



Results Accountants

104 Center Street, Lake Benton • 507-368-2711 or 877-542-2711

Tax Season Office Hours:

Mon.- Fri. 8:00 a.m. – 5 p.m. • Sat. 8 a.m. - 12 p.m.

QUESTIONS ABOUT INSURANCE?

Stop in and see Darcy about

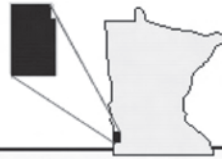
- Homeowners
- Auto
- Commercial Lines
- Farm Insurance



Buffalo Ridge State Agency, Inc.

DARCY MILLER – (507) 368-6693

107 CENTER ST. N., LAKE BENTON, MN 56149



**Lincoln County
Enterprise Development
Corporation**

*Helping the People of Lincoln County,
Minnesota Pursue their Business Goals!*

More than 600 Success Stories Since 1990!

Visit our web site to learn how
we can help you get started today.

www.lincolnterprise.org

(No Charge for Services – Strict Confidentiality)

Providing assistance with

- ✓ One-on-One Personalized Assistance
- ✓ Business Plan Development
- ✓ Goal Setting
- ✓ Market Research & Analysis
- ✓ Financing Options
- ✓ Loan Packaging
- ✓ Licensing & Permitting Information



**Lincoln County Enterprise
Development Corporation**

PO Box 46, 402 N. Harold
Ivanhoe, MN 56142

Toll Free: 800.658.2479

vince@lincolnterprise.org

**Fast. Reliable. Unlimited.
No contracts or data caps.
No hassle or worries.**

*What are you waiting for?
Join ITC's Fiber-Fast
network today!*

**Internet
Phone • TV**

**Check for Availability!
1.800.417.3667
www.itc-web.com**



First Security Bank



Lake Benton

Serving You for over 100 Years!



We're here to help you with all your Banking Needs

107 North Center St.
Lake Benton, MN 56149

Phone: 507-368-4261

www.firstsecuritybanks.com



Proud Sponsor of the L.A. Amundson Scholarship Fund

THE HERITAGE CENTER AND MUSEUM

The Heritage Center and Museum is located at 106 South Center Street, Lake Benton. Groundbreaking ceremonies were held on June 17, 2000. Dedication of the Victorian facade building was held on October 13, 2001.

The Heritage Center and Museum incorporates the following: City of Lake Benton,



Lake Benton Area Chamber of Commerce, Convention and Visitors Bureau, Lake Benton Historical Society, Lake Benton Diner's Club, Lake Benton Food Shelf, Economic Development Authority, Heritage Center and Museum.

Please be sure to visit our Heritage Center and Museum on your next trip to Lake Benton. The building houses a museum with timeline displays and exhibits portraying Lake Benton's past and present. The museum exhibits are changed often to keep it interesting to return visitors. Also available at the Center are travel brochures from the surrounding areas. Lake Benton souvenirs can be purchased at the Center.

The primary focus of the

museum is to educate visitors on the history of the community, including the impact and benefits that wind power has brought to our community. Tours of the Center, wind turbine sites and area farms are available for groups and school classes. You will be fascinated by the educational experience that awaits you. Please call for appointment or for more information: 507-368-9577. The center is open daily from 8 a.m. to 4 p.m. This is a must-see when visiting Lake Benton.

HISTORY OF LAKE BENTON

The City of Lake Benton, founded in late 1879, was named after the lake which had been discovered by the exploration of the Nicollet-Fremont party through the Minnesota-Dakota territory in 1838. General John C. Fremont, second in command of the party, named the beautiful body of water "Lake Benton" in honor of his fiancée, Jessie Benton, daughter of a powerful senator from Missouri, Thomas Hart Benton. Official authorization of the municipality by the state legislature was October 24, 1881.

During the summer of 1879, the railroad began west of Tracy, Minnesota. The railroad reached Lake Benton by November of that year. The first lot, sold as a business, was located on the corner where Lake Benton Hardware/NAPA is now located. Within a year, several new businesses were established and Lake Benton became a very active, bustling village.

Lake Benton became the Lincoln County Seat in 1881 after the Village of Marshfield disbanded. In 1901, it was voted to move the county seat from Lake Benton to Ivanhoe. A supreme court judge declared the vote illegal in 1903 and the county seat was returned to Lake Benton. In 1904, it was voted to return the county seat to Ivanhoe where it remains to this day.

Lake Benton has always had the pride and determination to remain successful throughout its colorful history. We are rich in heritage and tradition for excellence. We are dedicated to pursue and expand the vision of our forefathers.

HISTORIC SITES

Established in 1896, the Historic **Opera House** provides entertainment and theatrical productions by local talent and touring groups throughout most of the year. Pleased patrons come from more than 200 miles away to attend performances each year. Many tour directors include the Opera House at least once as they plan their annual itineraries. There are very few original opera houses left to provide the setting for this unique cultural experience. Recently, it was redecorated and new seats were installed.

The 1896 **Osbeck House** was built by an early Lake Benton merchant and was restored in 1976 by the late Jack Burk, one of the best known antique dealers in the Midwest. He lived in the house, which he furnished with many unique antiques from the Victorian era.

The **Snyder Log Cabin** in Hole-in-the-Mountain Park was the home of early settlers to the area.

Sites of **Major Brown's 1862 Trading Post** and the Taylor family home are both marked in the north part (horse camp) of Hole-in-the-Mountain Park.

Burial mounds, built by the mound builders about 10,000 years ago, are located in Memorial Hill Cemetery.

The Heritage Center Museum is open in downtown Lake Benton Monday through Friday from 8 a.m. to 4 p.m.



DYNAMIC HEALTH
Chiropractic, Ltd.

Dr. Angela Miller

Doctor of Chiropractic • BS in Nutrition
Pediatric Chiropractic Certified

220 W. Main St.
Pipestone, MN 56164

507-825-4225
888-869-2429

S & E Auto Clinic

Auto Repair
Scott Christensen

507-368-9288 *Shop*
507-368-9357 *Home*

Located Downtown
Lake Benton, MN 56149



"Alone we can do so little, together we can do so much."
- Helen Keller

Lake Benton Chapel
507-368-9385
HartquistFuneral.com



**Lincoln-Pipestone
Rural Water**

415 East Benton St., PO Box 188
Lake Benton, MN 56149
(507)368-4248

*Dedicated to bringing you plentiful, pure
water for today and future generations.*



**Lake Benton
Elementary School**



The Lake Benton Public School District envisions itself as the school of choice for families wanting their children to reach their full academic, social and emotional potential. Lake Benton Public School will accomplish excellence in education through

- Highly qualified and empowered staff
- Student centered learning approach
- Innovative and Rigorous Curriculum
- Positive Behavior Interventions and Supports that promote positive character traits
- Focused efforts on whole student growth

**Excellence in Education
Come Learn With Us!**

Lake Benton ISD #404 | 101 S. Garfield St. | (507) 368-4235
www.lakebentonschools.org | Email: jeff.hansen@lb.k12.mn.us

WINDPOWER



In 1994, the Minnesota State Legislature ordered 425 megawatts of wind power and 125 megawatts of bio-based energy as down payment on the detailed nuclear phase-out plan proposed by Northern States Power (NSP), now known as Xcel Energy, for storage of 17 nuclear waste dry casks at Prairie Island Nuclear Facility located in Red Wing, Minnesota. From this law, Lake Benton became known as the “Windpower Capital of the Midwest.” As legislation continues to visit the issue of windpower, the number of megawatts continues to rise. As of 2003, Xcel was ordered to produce 825 megawatts of renewable energy.

The second highest point in southwest Minnesota is located just north of the Lake Benton city limits. Lake Benton is located on the Bemis Moraine, more commonly referred to as the Buffalo Ridge. The ridge is a moraine, which is a pile of sediment (silt, sand, gravel and boulders), that were left at the edge of a glacier. There is a 1.6 kilometer-wide break in the moraine in Lake Benton. There are similar, but less spectacular, breaks in the moraine northwest of the city. The Buffalo Ridge provides the most constant wind speed, averaging 15-18 mph. The Buffalo Ridge is approximately 10 miles wide. It begins in northwestern Iowa and stretches about 60 miles through Minnesota and into South Dakota. It is approximately 2,000 feet above sea level. More than 450 wind turbines grace the skyline along the Buffalo Ridge in Lincoln County, Minnesota.

Wind developers from around the world flocked to Lake Benton in hopes to cash in on the new crop. The initial step, Phase I, called for 25 megawatts. Kenetech Windpower was contracted to put up the first 25 megawatts. The first turbines, 73 in all, are known as the “Kenetech Turbines” and are now owned by Florida Power and Light. This was a 28 million dollar project. In 1994, they were the largest turbines in the world, reaching 125 feet in the air, the blades were on average 40 feet long and each turbine produced 360 kilowatts of electricity. This was enough to supply the electrical needs of 125 homes.

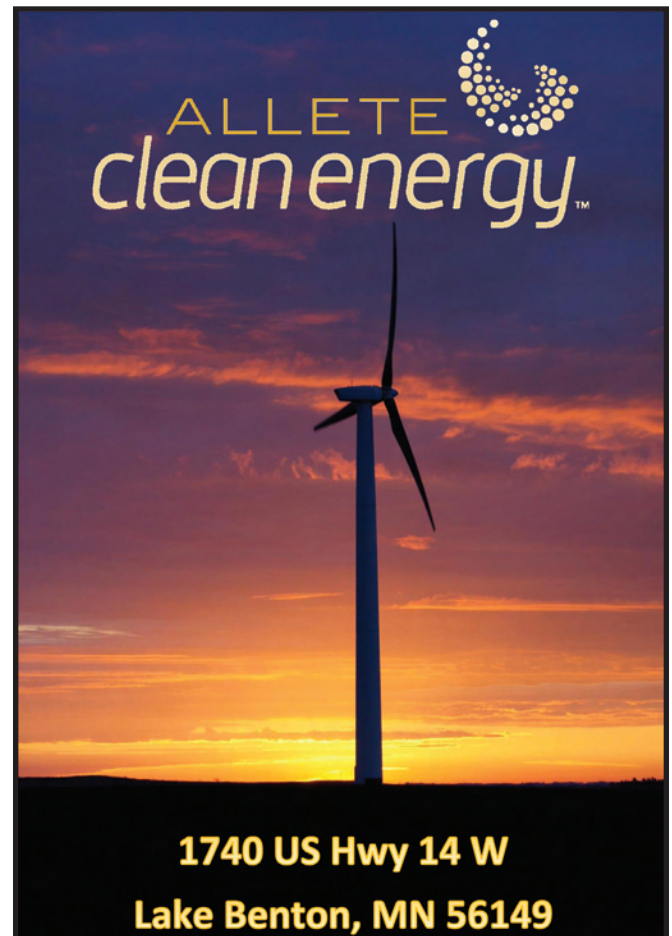
In September, 1996, and in April, 1998, Lake Benton Power Partners, LLC (formerly Zond Minnesota Development Corporation II), now known as AES Wind Generation, signed a contract with Xcel Energy to supply Xcel with 211 megawatts of clean windpower capacity for 25-30 years. These projects became known as Lake Benton I and Lake Benton II. To produce that amount of electricity, it took 291 wind turbines. Each turbine produces 750 kilowatts of electricity, which is enough to supply the electrical needs of 250 homes. Each tower stands on 415 tons of concrete, they are 168 feet tall, and weigh 124,000 pounds (62 tons). The blades measure 76 feet long and make a complete revolution every two to

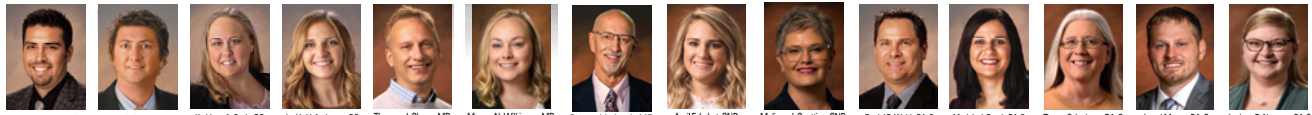
three seconds.

In January of 1999, Xcel Energy was mandated by the Public Utilities Commission (PUC) to double its wind power development in the coming years. The PUC ruled that it was “in the public’s interest” and that additional windpower should be developed. Xcel committed to 825 megawatts in its resource plan through the year 2015. The new requirements would produce enough energy to power about 100,000 homes.

The technological advances of the wind turbine have allowed for expansion on the Buffalo Ridge. The next generation of turbines reach up to 700 feet, from base to tip of blade. The blade length can be up to 215 feet long. The turbines can now produce up to 2.7 megawatts of electricity each. Minnesota is in the top 20 states with the greatest wind energy capacity, with an estimated 183,000 megawatt potential. In 2020, Minnesota generated 4,300 megawatts from over 2,500 turbines primarily located in the southern portion of the state, which is enough to serve an estimated 4.3 million people.

Please tour our Heritage Center museum located at 106 South Center Street, in downtown Lake Benton. For further information contact: 507-368-9577. The museum is open 8:00 a.m. to 4:00 p.m. daily and by appointment.





Myles F. Zepher, DO Dustin C. Stewart, MD Kathleen A. Savio, DO Jackie V. Anderson, DO Thomas J. Chapa, MD Megan N. Wilkinson, MD Steven Verbeek, MD April E. Labat, CNP Melissa J. Scotting, CNP Daniel R. Wolke, PA-C Maricia J. Prunk, PA-C Tanya C. Letham, PA-C Jared Mouw, PA-C Jordana R. Neeman, PA-C

At Pipestone County Medical Center, we know how important it is to feel comfortable with your healthcare providers and your healthcare facility.

Combining skills and talents of staff, with the most up-to-date equipment and state-of-the-art facility gives the people in our region the best of both.

Good people practicing good medicine; carrying on a tradition of caring and commitment.

You'll find what you need in Pipestone.

Pipestone County Medical Center & Family Clinic

Healing starts at home!



www.pipestonehealth.org

916 4TH AVENUE SW • PIPESTONE, MN 56164 • 507-825-5811 • ESPAÑOL 507-825-7207



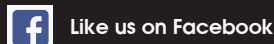
Streaming online 24/7 at

- KISDRadio.com
- KLOHRadio.com
- KDWCRadio.com
- KJOERadio.com

For Advertising Information

call (507) 825-4282
or (507) 836-6125

PO Box 456
Pipestone, MN 56164
ChristensenBroadcasting.com



LAKE BENTON LAKE ASSOCIATION



The membership of the Lake Benton Lake Association pledges to work together to protect and enhance the quality of the water, the aquatic environment, the fishery and the wildlife of Lake Benton Lake and its surrounding watershed. We are committed to preserving the health of our lake for present and future generations. LBLA is proud to preserve Lake Benton's history, heritage, natural beauty and environment and to promote its use and enjoyment for all. As we work together with local communities, the Lincoln county commissioners, the Lincoln county Environmental Office and the Minnesota DNR, we strive to keep Lake Benton

weed free. We continue to monitor the health and ecosystem of the lake and continue to combat invasive weeds like the curly leaf pondweed. In conjunction with weed treatment, we have implemented a fish stocking program of pan fish in hopes of promoting more "family fishing fun." Everyone is welcome and encouraged to help protect the beauty and charm of Lake Benton Lake by becoming members. It's not too late to become a member and support our fish stocking and other lake projects. Please contact Dawn Kutil, Secretary to LBLA at dkutil1@isd77.org to request a membership form. We are always looking for new members and LBLA Board Members. Please contact our

President, Dean Lueck, lueckdean@gmail.com, or our Vice President, Darin Cox, at BigD@sio.midco.net with any questions or concerns.

Annual Pork Sandwich Fundraiser and Membership drive will be held July 13th, 2024 at Stoney Point Campground and July 2025 at Stoney Point Campground (Date TBD). The fundraiser will be held indoors so come rain or shine! Please Watch for further information as it becomes available.



Lincoln County HRA

Income based housing

Two and three bedroom duplexes available in Tyler, Arco, Ivanhoe, Hendricks and Verdi.

Two, three, and four bedroom single family homes in Lake Benton

Benton Valley Apartments

One and two bedroom apartments.

106 West Bluff Street
Lake Benton, MN 56149
507.694.1552 or 877.484.5844

Equal Housing Opportunity



LAKE BENTON STORAGE UNITS AVAILABLE



CALL 507-829-6693

email: lbstorag@itctel.com

HISTORIC HIGHWAYS

US HIGHWAY 14

A segment of US Highway 14, from Lake Benton to Mankato, Minnesota, was designated as Laura Ingalls Wilder Historic Highway in 1994. Along the route, you will find signs at the entrance of each town. The towns along this designated route of US Highway 14 have formed a coalition for the purpose of promoting the highway and their individual communities. Each town has identified specific sites that relate to the Ingalls era of the late 1800s. The Ingalls family traveled along this route from Wisconsin to DeSmet, South Dakota, settling for a time at Walnut Grove, Minnesota. "The Laura Ingalls Wilder Guide" will help you find interesting sites and events along US Highway 14, including Lake Benton.

US HIGHWAY 75

Historically, US Highway 75 was known as the "King of Trails" (KT) before highways were numbered in 1926. The "trail" is marked from Winnipeg, Manitoba, to the Gulf of Mexico at Galveston, Texas. This trail was originally used by the Indians and early pioneers as a trade route. Although the present "KT" does not follow the old "KT" exactly, large segments of the highway include it, while the rest of the highway was constructed nearly parallel to it. A remnant of the original "KT" is still visible today following the railroad tracks south of Lake Benton.



"The International Historic Highway 75 King of Trails Coalition" was incorporated in 2000. The purpose of the organization was for cooperative marketing and for the promotion of the communities along the highway and its corridor. The organization has developed a website: www.highway75.com, which provides excellent information about member communities and additional links to those communities listed. The Minnesota Legislature designated US Highway 75 the "Historic King of Trails" in 2001.

Lake Benton Lake is the the second largest freshwater lake on the King of Trails. The community of Lake Benton is very proud of our history and we encourage our community and visitors to discover the "King of Trails."

LAKE BENTON PUBLIC LIBRARY

The library's history began in 1929 with the Excelsior Federated Women's Club, which had a high interest in education and literacy. The Excelsior club collected more than 200 books and magazines, available opening day. The members took turns tending the library.

The library was originally located above the city Jail, which was in the building next to the Lake Benton Community Center. We moved to our current location in 2007. In 2012 an addition was put on, doubling the space. In 2014, Carl and JoAn Burk donated the construction of a patio at the back of the library, in memory of Jack Burk, Carl's brother and Lake Benton advocate

The Lake Benton Public Library has been a part of the Plum Creek Regional Library system for more than 25 years. We work hard to strengthen the relationship between our library and the regional system to improve service

to our patrons. Because we are part of the Plum Creek regional system, patrons have access to free wireless internet, a larger collection of items, and various special events and



programs.

The Lake Benton Public Library has always been proud of its collection. Patrons have access to more than 10,000 collection items, including DVDs, books, audiobooks, cake pans, CDs and other non-print materials in the Lake Benton Public Library. Patrons also have access to more than 800,000 items within

the Plum Creek Regional system and more than 28,000,000 collection items throughout the state of Minnesota.

The library has been an active learning center. The children's programs include Friday Morning Fun hour every Friday from September through April, Summer Reading Program from June through July, Game Time, and various special programs throughout the year. The library also provides adult learning opportunities, with monthly adult book club from September through May, an outreach program for homebound community members twice a month, the Winter Reading Program from January through March and various learning opportunities and special events throughout the year.

Head Librarian Lynn Carpenter and Assistant Librarians Heidi Thomssen, and Corrine Crowe.

RECREATION

FISHING

Lake Benton Lake is 2,875 acres in area and is the sixth largest lake in southern Minnesota. It is famous for whopper-sized walleye. It is ranked among the 10 best walleye lakes in Minnesota. Several walleye weighing over 10 pounds have been caught in recent years. Two- and three-pound “marble eyes” are common and many are caught that weigh in at the five- to eight-pound range. Blue gill, sunfish, and crappies are abundant and several trophy-sized have been caught. Many of them weigh over a pound and many have been brought in weighing more than two pounds. There are also northern pike and some large mouth bass. Fishermen who return year after year attest to the fact that Lake Benton Lake is one of southwest Minnesota’s favorite angling spots.



HUNTING

Herds of deer make their home in the wooded hills of Lake Benton. Hunters can bag their deer with little difficulty. The thousands of acres of grassland provide excellent nesting habitat for game birds of all kinds, especially for pheasants. Our lakes and marshes attract many species of waterfowl, including geese and ducks. The bountiful supply of wildlife makes the area around Lake Benton a hunter’s paradise.



CAMPING

There are two fine county parks available for your camping comfort and enjoyment. **Hole-in-the-Mountain Park** is located on U.S. Highway 14 on the west edge of town. The chalet provides indoor facilities for gatherings in the summer and is used as the warm-up shelter in the winter. It is a popular camping park and many family reunions are held there. The park manager’s office is also located here. **Norwegian Creek Park** is on the north shore of Lake Benton and is only one mile north of town on U.S. Highway 75 and one mile east. There is a swimming beach, a boat-launching area, picnic and shelter house facilities, restrooms, and many camp sites.



TRAILS

A portion of Hole-in-the-Mountain Park (on the north side of Highway 14) is designated for those who like to bring their horses while camping. Facilities are there to accommodate both the campers and their horses. Horseback riding is fun on the hillside trails.

Hiking on the park trails give an opportunity to explore some of the evidences of early pioneer life.

Snowmobilers enjoy the open spaces while enjoying our winter wonderland.



SKIING

Water skiing is popular in the summer. A lake that is several miles long gives everyone plenty of room without interfering with other activities on the lake.

Cross-country skiing is gaining popularity each winter at Hole-in-the-Mountain Park.

WINDFARMS

Tour the “Original Windpower Capital of the Midwest” where you will view over 450 wind turbines generating electricity for Xcel Energy.

LAKE BENTON OPERA HOUSE

In December of 1895, a mere two weeks after fire had ravaged the original wooden opera house, a dedicated group of citizens rallied together to form an association aimed at financing the construction of "a fine new brick structure." Completed in late 1896, this new edifice stood out as one of the finest in its vicinity, featuring a spacious stage, a charming horseshoe-shaped balcony (still one of its most beloved attributes), private boxes for esteemed guests, and an advanced gas lighting system. It quickly became a central hub, hosting theatrical groups, traveling performers, school plays, concerts, church and political meetings, as well as events like July 4th and Decoration Day observations. The movable seats allowed for versatile use, accommodating dance, card parties, dinners, basketball games, and various community gatherings, including a few funerals for esteemed community leaders. From the 1920s to the early '50s, the Opera House even served as a regular venue for movie screenings.

However, the once-vibrant building succumbed to neglect and decay, exacerbated by a devastating hailstorm in 1963 that left it exposed to the elements. In 1970, a determined group of citizens joined forces to save the structure from impending demolition. Over the next five decades, ongoing restoration efforts focused on preserving the original ambiance of the beautiful old building. The maintenance initiatives ranged from roof repairs, tuckpointing, and heating and cooling system upgrades to periodic enhancements in lighting and sound.

In the early 2000s, a monumental task was achieved with the installation of new seats, accompanied by a thorough interior



repaint while the area was vacant. The exterior received attention, too, as the deterioration balcony was restored to its original form, and Victorian colors were applied to highlight previously overlooked decorative details.

In 1976, the Opera House was officially incorporated as a non-profit organization with the mission to restore the historical building and to promote and sponsor the arts. A significant milestone occurred on March 25, 1977, when it was added to The National Register of Historic Places. In 2002, the adjacent building, constructed in 1896, was acquired, and intensive restoration work began on its once-majestic facade. This building now serves as a storage space for costumes and sets, as well as a venue for dressing rooms, rehearsals, and board meetings.

Operating from March until mid-December, the Opera House offers a diverse program featuring plays, musicals, and sponsored talent. Much of its success is owed to the dedication of numerous volunteers who contribute to the ongoing preservation of the building, serve on the board of directors, participate as actors or in various technical roles, and assist with tasks such as ushering and reservations.

2023 Board Members

David Norgaard - President
Nate Gates - Vice-President
Lisa Willert - Treasurer
Jodi Riedel - Secretary
Kathy Holck - Director
Alan Riedel - Director
Chesney Guetter - Director
Justin Condelli - Director
Tom Schmitt - Director
Priscilla Osland - Director
Milo Downs - Director
Robyn Condelli - Director
Eric Fish - Director

For tickets visit us online at www.lakebentonoperahouse.org, email info@lboh.org or call 507-368-4620.

Find pictures, videos and upcoming events on our Facebook page at www.facebook.com/lakebentonoperahouse/about

"Mary Poppins" - 2023



Children's Theater - 2023

LAKE BENTON OPERA HOUSE



2024 Opera House Schedule

April 12-14, 19-21

June 15

July 17-21, 24-28

September 27-29, October 4-6

November 9

December 7

"Kitchen Witches"

Broadway Meets Lake Benton

"Tarzan"

"Clue"

Children's Theater

Christmas in Lake Benton

WWW.LAKEBENTONOPERAHOUSE.ORG

or email: info@lboh.org

For more information call: 507-368-4620

"The Mousetrap" - 2023



"Leaving Iowa" - 2023



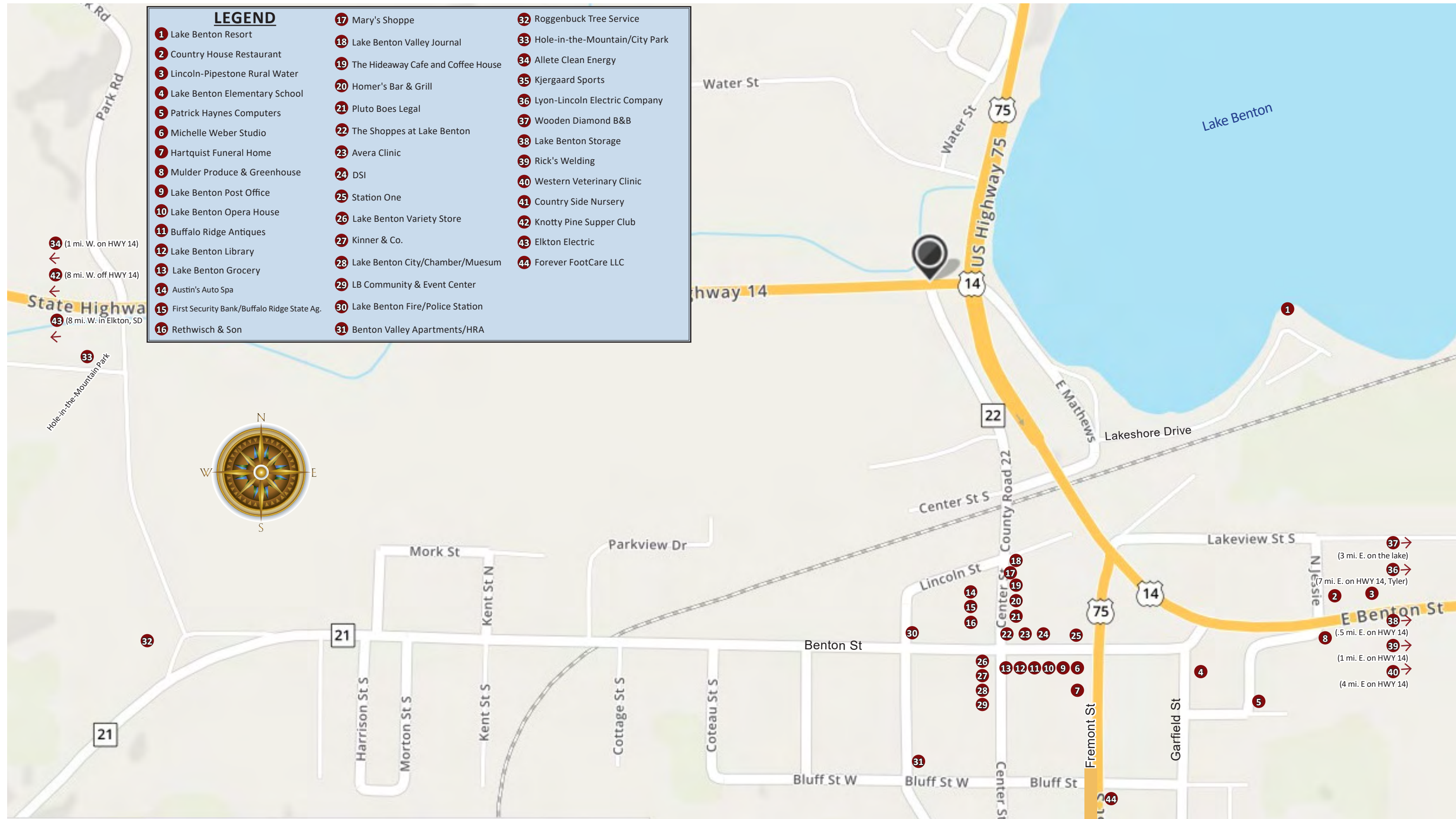
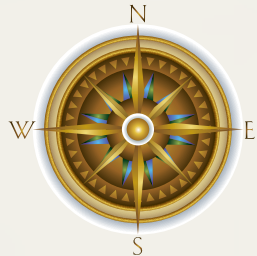
The countdown to an epic 2025 season has begun.

Stay tuned for a season like no other, where the boundaries of imagination are shattered, and the extraordinary takes center stage.

LEGEND

- | | | |
|---|--|--|
| 1 Lake Benton Resort | 17 Mary's Shoppe | 32 Roggenbuck Tree Service |
| 2 Country House Restaurant | 18 Lake Benton Valley Journal | 33 Hole-in-the-Mountain/City Park |
| 3 Lincoln-Pipestone Rural Water | 19 The Hideaway Cafe and Coffee House | 34 Allete Clean Energy |
| 4 Lake Benton Elementary School | 20 Homer's Bar & Grill | 35 Kjergaard Sports |
| 5 Patrick Haynes Computers | 21 Pluto Boes Legal | 36 Lyon-Lincoln Electric Company |
| 6 Michelle Weber Studio | 22 The Shoppes at Lake Benton | 37 Wooden Diamond B&B |
| 7 Hartquist Funeral Home | 23 Avera Clinic | 38 Lake Benton Storage |
| 8 Mulder Produce & Greenhouse | 24 DSI | 39 Rick's Welding |
| 9 Lake Benton Post Office | 25 Station One | 40 Western Veterinary Clinic |
| 10 Lake Benton Opera House | 26 Lake Benton Variety Store | 41 Country Side Nursery |
| 11 Buffalo Ridge Antiques | 27 Kinner & Co. | 42 Knotty Pine Supper Club |
| 12 Lake Benton Library | 28 Lake Benton City/Chamber/Museum | 43 Elkton Electric |
| 13 Lake Benton Grocery | 29 LB Community & Event Center | 44 Forever FootCare LLC |
| 14 Austin's Auto Spa | 30 Lake Benton Fire/Police Station | |
| 15 First Security Bank/Buffalo Ridge State Ag. | 31 Benton Valley Apartments/HRA | |
| 16 Rethwisch & Son | | |

- 34** (1 mi. W. on HWY 14) ←
- 42** (8 mi. W. off HWY 14) ←
- 43** (8 mi. W. in Elkton, SD) ←



- 37** → (3 mi. E. on the lake)
- 36** → (7 mi. E. on HWY 14, Tyler)
- 2** →
- 3** →
- 38** → (.5 mi. E. on HWY 14)
- 8** → (1 mi. E. on HWY 14)
- 39** →
- 40** → (4 mi. E on HWY 14)

(3 mi. S. off HWY 75) **41** ↓



www.lakebenton.us | Chamber@LakeBenton.us
507-368-9577 Ext 2.