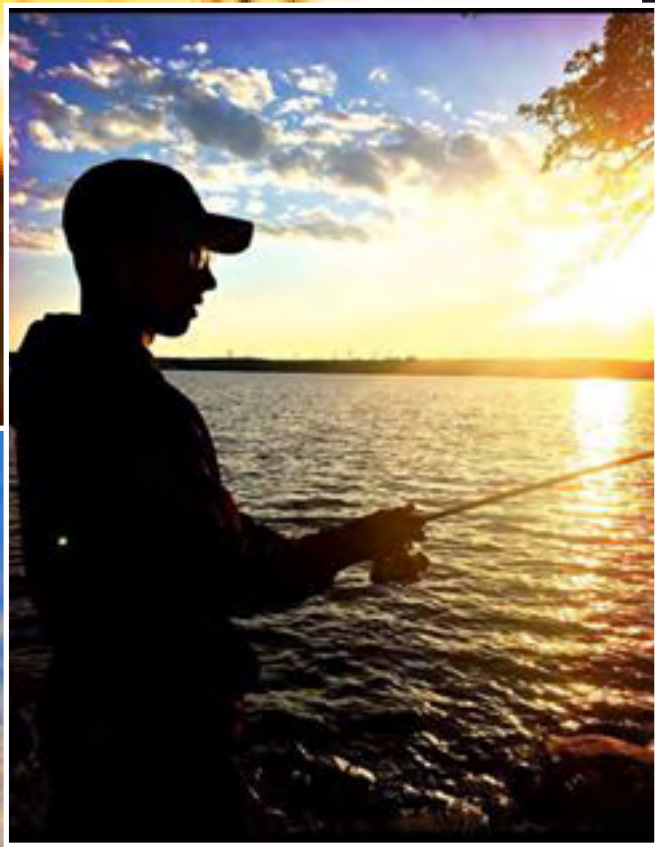


Vacationer's Paradise



Thank you to local residents for sharing their personal photos with the Chamber and allowing us to include them in our publication.



Photo by Tanya Thomas - 2nd Place Photo Contest Winner



LINCOLN COUNTY PARKS

NORWEGIAN CREEK COUNTY PARK

Norwegian Creek is located one mile north, and one mile east of the City of Lake Benton. Norwegian Creek has 108 campsites with electricity and water. Facilities include two picnic shelters, a bathhouse with showers, a fish-cleaning shed, RV dump station, a swimming beach, and two boat launches.

CAMPING RATES:

Electricity & Water \$25.00 a night

Non-Electric \$20.00 a night

Tents \$18.00 a night

For seasonal rates call 507-368-9350

Rates subject to change.

PICNIC POINT COUNTY PARK

Picnic Point is located eight miles north, three miles west, and one mile north of Lake Benton. The park is 43 acres located on the southern side of Lake Shaokatan. Picnic Point offers 30 campsites with electricity and water. It also has numerous sites without electricity. Also, Picnic Point has one picnic shelter, a swimming beach, two boat launches, a floating T-dock, a fish cleaning shed, and a RV dump station.

CAMPING RATES:

Electricity & Water \$25.00 a night

Non-Electric \$20.00 a night

Tents \$18.00 a night

For seasonal rates call 507-368-9350

Rates subject to change.

HOLE-IN-THE MOUNTAIN COUNTY PARK

Hole-In-The-Mountain Park is located on the western edge of Lake Benton just off Highway 14. There are 33 campsites with electricity and water, and 30 electrical sites located in the horse campground. The park is approximately 800 acres of woodland and prairie land. Throughout the park you will find historical sites along five miles of hiking/horse trails. Hole-In-The-Mountain Park also offers two picnic shelters. The newly renovated chalet can be rented for family reunions, graduation parties, and other functions. Cost is \$100 per day plus \$100 damage deposit.

CAMPING RATES:

Electricity & Water \$25.00 a night

Non-Electric \$20.00 a night

Tents \$18.00 a night

For seasonal rates call 507-368-9350



FOR RESERVATIONS CALL 507-368-9350 or write to: Lincoln County Parks, P.O. Box 369, Lake Benton, MN 56149

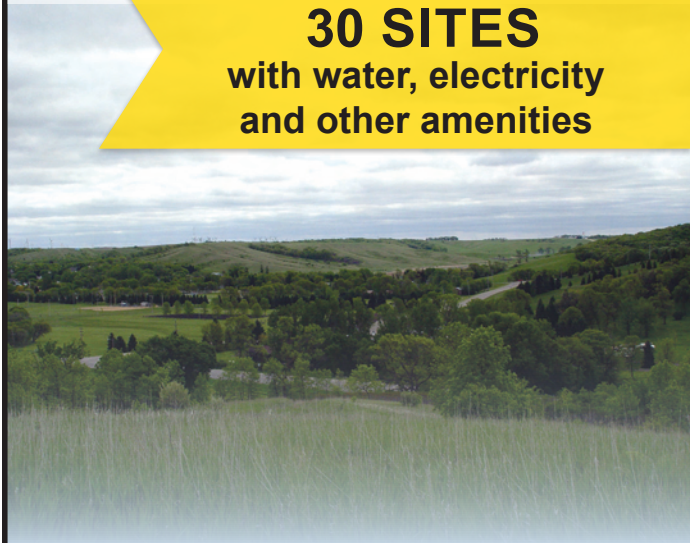


Hole-in-the-Mountain Park and Horse Camp

Hole in the Mountain Horse Camp features

30 SITES
with water, electricity
and other amenities

The view from the horse camp is spectacular. The camp has five to seven miles of trails, electrical hookups, showers and restrooms. Protected by trees, high atop the hills, this is a calm, relaxing atmosphere for both campers and animals.



Wooden Diamond B&B



Open year-round and located on the shores of Lake Benton Lake. A truly unique and memorable Bed and Breakfast experience! The "Parsonage Room" offers a large guest suite with private bath, kitchenette, and free wireless connectivity. Choose to be outdoors?

The private deck overlooking the lake with your morning coffee and use of the fire-pit for those cool nights add to your enjoyment!

Breakfast may be served in your room or in the three-season room. The "Farmhouse Room" takes you back to a simpler time with its comfy 4-poster beds and main floor ease.

Each room will sleep up to 4 guests!

Bill and Jenifer Vollmer

1593 Shady Shore Drive, Lake Benton, MN 56149
(follow the signs on Highway 14)

Telephone (507) 828-3929

e-mail: billandjenifer@gmail.com

Facebook: [WoodenDiamondB&B](https://www.facebook.com/WoodenDiamondB&B)

Find us on Airbnb!



Providing Services to

Business & Communities:

- Business & Economic Development
- Grant Services (Writing & Administration)
- Small Cities Development Program
- Community Development
- Housing Management
- Renewable Energy Development
- Maintenance Services

Contact us today to see how DSI can offer solutions to your business or community.

402 N. Harold Street / Ivanhoe, MN 56142

Call us at (507) 694-1552

visit us on our webpage: dsi-services.com
Follow us on Facebook: [Development Services, Inc.](https://www.facebook.com/DevelopmentServicesInc)

Life on the lake is relaxing. Let us help make it simpler.

17 cabins, Restaurant, Bar & Off-Sale
Pontoon, Kayak, and Ice House Rentals
Bait & Tackle plus
Fishing & Hunting Licenses

☎ 507-368-4399

lakebentonresort@gmail.com

325 Lakeshore Drive, Lake Benton, MN 56149



Hours:

Mon - Thurs 8:00 a.m. - 9:00 p.m.
Fri - Sat - Sun 8:00 a.m. - Close

Find us on Facebook @ Lake Benton Resort

SADDLE HORSE HOLIDAY



The organizational meeting of the Dakota-Minnesota Saddle Horse Holiday was held at the Lorenzen Cafe in Lake Benton on March 23, 1947. Over the past years, the event has grown to include as many as eight hundred horses and a two-ring horse show that is held annually on the third Sunday of June. The Chamber and local businesses host various activities for families and children throughout the weekend celebration.

The weekend events begin with fireworks at dusk on Friday, family events starting Saturday including a parade at noon and the firemen's street dance. On Sunday the trail ride begins at 8 a.m. followed by the annual horse show located at Horse Hill at the Hole-in-the-Mountain Park in Lake Benton. There are numerous classes and games/contests that take place with trophies and ribbons awarded. Please join us for a weekend of fun! There is something for everyone.

Please contact Mike DeVries 507-829-5857 or Lori Hart 507-247-3401 for further information regarding the horse show and trail ride. Please contact the Chamber at 507-368-9577 Regarding the parade.



SADDLE HORSE HOLIDAY

June 14-16, 2024 and
June 13-15, 2025

Fireworks - Family Fun Day - Hot Dog Day
Opera House Musical Review - Citizen and
Organization of the Year presentation -
Fireman's Dance - Parade - Horse Show

Fun for the entire family!

LAKE BENTON LAKE



Lake Benton Lake: one of the most popular lakes in southern Minnesota.

It's no wonder Lake Benton Lake is so well known. This famous lake has an area of 2,875 acres, making it the sixth largest lake in southern Minnesota. Fishermen from throughout the upper Midwest come the year around to catch game fish, including walleye, northern pike, and large mouth bass. Pan fishermen enjoy catching beautiful yellow perch, crappies, bluegills, and bullheads.

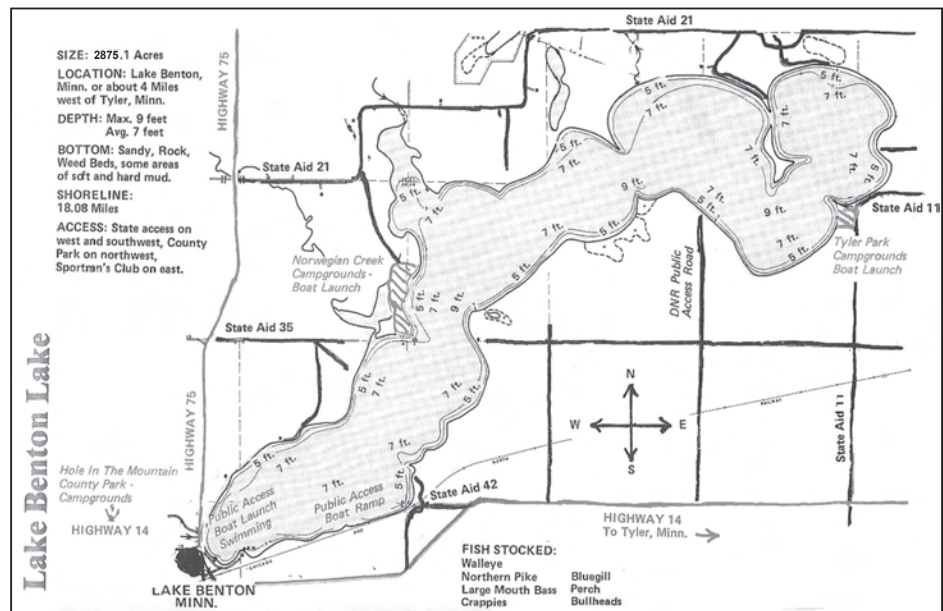
Fishermen can be seen daily on the lake, in their boats and shore fishing, as they enjoy the peaceful and relaxing atmosphere of a pleasant summer day. In the winter a "little town" appears as the ice fishermen arrive with their unique houses. The aeration system, maintained by our local Sportsmen's Club, prevents any winter-kill of fish. The fertility of this prairie lake provides the nutrients needed to produce fish that are above average in size and numbers. Many trophy walleye that are caught range from eight to twelve pounds. Walleye weighing two to four lbs. are common. Many perch are over one pound and many exceed two pounds in size.

The DNR stocks the lake with more than two million walleye fry every two years. This is in addition to those

produced in the lake itself.

Fishermen aren't the only ones who enjoy the lake. Boating and water skiing are always popular in the summertime. Swimmers gather at the beaches for a day in the sun. In the winter, for a cure of the winter blues, snowmobiling is a fun sport.

The Lake Benton Lake Association is continually involved in projects to improve the water quality of the lake. They realize that a good lake is not only an asset to the residents who live on the lake, but it is also an economic asset to the local economy as well.



THE HOLE-IN-THE-MOUNTAIN PRAIRIE

The Hole-in-the-Mountain Prairie is an 1,157-acre prairie and oak savanna wildlife preserve located south of Lake Benton along Highway 75. The preserve is part of a larger glacial escarpment that runs from southwest Minnesota through northeast South Dakota. Locally, this hilly region is known as Buffalo Ridge.

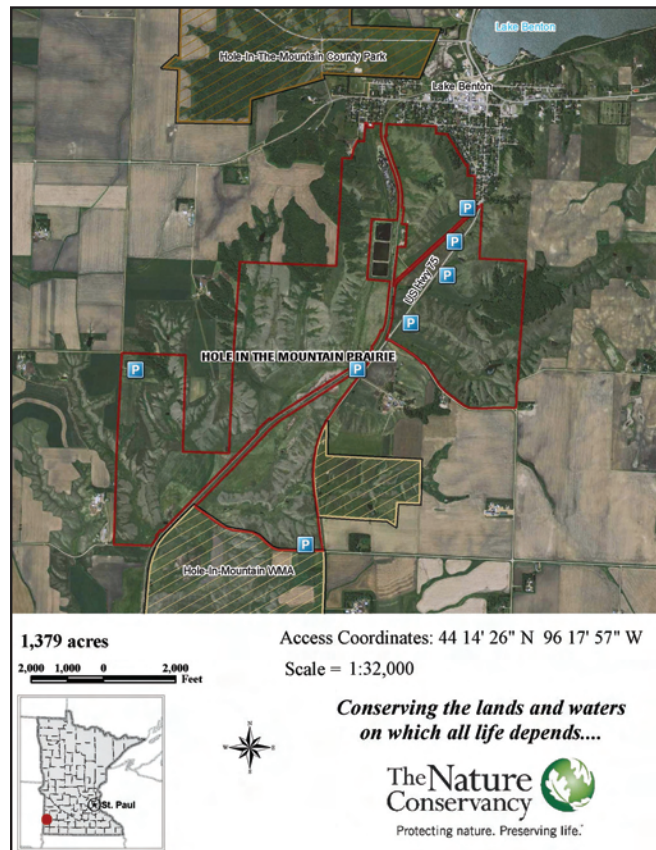
Its undulating terrain is carpeted in wildflowers and alive with birds and butterflies during summer. The preserve provides excellent habitat for rare prairie-dependent insects (including 25 species of butterflies), nesting waterfowl, passerines, raptors, and other grassland birds.

The Nature Conservancy encourages you to visit the preserve. We also strive to maintain as natural a setting as possible while minimizing wildlife disturbance. The preserve is open during daylight hours for hiking, birdwatching, photography, and any other non-consumptive uses. We remind you that access is walk-in only (no horses, mountain bikes, ATVs, or pets) from the roads around the preserve. Vehicles can be parked near the main sign near the railroad, one mile south of Lake Benton along Highway 75 or on the edge of the gravel road on the south side of the preserve. Removal of plants, animals, or any natural materials is prohibited. If you pack it in, please pack it out!

The preserve harbors more than 60 species of grasses, sedges, and rushes, 10 species of trees and shrubs and 200 species of wildflowers. Native plants include six of special concern: prairie moonwort, small-leaved pussytoes, small white lady's slipper, red threeawn, soft goldenrod, and slender milk-vetch.

Most unique to Hole-in-the Mountain are its butterflies, thriving on the native grasses and forbs protected here: The Dakota skipper and Ottoe skipper, both threatened species; and the Uncas skipper (*Hesperia uncas*), an endangered species. Visitors may also catch glimpses of a suite of prairie birds, mammals, and other insects including badger, coyote, white-tailed deer, wild turkey, red-tailed hawk, meadowlark, and bobolink.

The prairie valley is the headwaters of Flandreau Creek, which runs in a southwesterly direction toward the



Big Sioux River. Indians called the half-mile-wide valley “Mountain Pass” or “Hole-in-the-Mountain.” This preserve is owned and operated by The Nature Conservancy as part of a larger project that strives to enhance habitat across the Prairie Coteau region of Minnesota and South Dakota by working to protect native rangelands and wildlife through sound habitat management while working in partnership with the farmers, ranchers, and public agencies who share our interest in preserving this incredible landscape. Hole-In-The-Mountain Preserve represents in full beauty what the southern end of the larger 2.4-million-acre Prairie Coteau region might have looked like prior to European settlement.



KNOTTY PINE SUPPER CLUB



Join us in our cozy lounge with big screen TV or relax in our spacious dining area.



Delicious Hand Cut Steaks
 Nightly Seafood Specials | Chicken | BBQ Ribs
 Homemade Soups Everyday
 Slow Roasted Prime Rib on Fridays and Saturdays
 Something for Everyone to Enjoy!

Rehearsal Dinners | Banquets
 Birthday Parties | Anniversaries
 Special Occasions

Open Wednesday-Sunday at 5 p.m.

Located 1½ miles east of Elkton, SD
(507) 548-3781
www.TheKnottyPineSupperClub.com



Great food and entertainment at the little town by the lake!

Hideaway Cafe' & Coffee House



EST. 2023

Breakfast & Lunch

Dine In & Carry Out Available

Open Tuesday - Saturday 8 a.m. – 2 p.m. (Open 7 a.m. in Summer)

Sunday Breakfast Buffet (May - Oct. 9:30 a.m. - 1 p.m.)

116 Center Street South • Lake Benton, MN 56149
 (507) 368-3668 • Find us on Facebook: *Hideaway Cafe*

LAKE BENTON Minnesota

AREA COMMUNITY & EVENT CENTER

BOOK YOUR NEXT EVENT WITH US!



GALLERY ROOM



COMMERCIAL KITCHEN

AVAILABLE AMENITIES

Full Commercial Kitchen w/ Walk-in Cooler, Tables & Chairs, Stage, Internet, Sound System, TVs, Video Distribution, Projector



BANQUET HALL

CONTACT US TODAY
 507.368.4641 ext. 4
info@lbeventcenter.com



@LAKEBENTONEVENTS



DINING

COUNTRY HOUSE RESTAURANT AND CATERING

Located on East Highway 14, Lake Benton. Enjoy fine dining by indulging in a mouth watering four-course meal or dine casually in the lower level. They also offer catering, take out and group packages. Open Thursday-Sunday evenings all year long.

(507-368-4223) Facebook: CountryHouseSupperClub

HIDEAWAY CAFE AND COFFEE HOUSE

Located at 116 Center Street, Lake Benton. Enjoy home-cooked meals for your breakfast and lunches. (507-368-3668)

KNOTTY PINE SUPPER CLUB

Located near Elkton, SD. The Knotty Pine offers a gourmet menu, specializing in their well-known prime rib and garlic mashed potatoes. Their sports bar is a great place to watch the games with your friends. They also offer a party room for special occasions. (507-548-3781 or 1-800-442-7977)

LAKE BENTON RESORT

Located on 325 Lake Shore Drive, Lake Benton. Delicious sit down and take-out food, including pizza, sandwiches, appetizers and more. Full bar in the restaurant area and off-sale liquors. (507-368-4399) Facebook: LakeBentonResort

STATION ONE

Located on US Highway 75 and Benton Street in downtown Lake Benton. Station One features Hot Stuff Pizza, Smash Hit Subs, sandwiches and many convenience grocery items. (507-368-4204)

COUNTRY HOUSE Restaurant & Catering

Casual Family Dining | Take out | Cocktails

Private Party Room | Private Groups by Reservation

Steaks | Seafood | Broasted Chicken | Sandwiches



Open at 5:00 p.m., Thursday - Sunday

Catering in southeast South Dakota
and southwest Minnesota

SERVING YOU SINCE 1983

East Hwy. 14, Lake Benton, MN

New Email: CountryHouseLB@gmail.com

Phone: 507-368-4223 | Cell: 507-829-4843



Find us on Facebook!

LODGING

LAKE BENTON RESORT

Now under new ownership, the 17 units are available year-round for ice fishing, hunting and summer activities. All units are clean and comfortable, including cable TV and kitchenettes. Keep the Lake Benton Resort in mind when making reservations for weddings, reunions, hunting, fishing and vacation plans. They also offer pontoon, ice house and kayak rentals. Food, full bar and off-sale available on-site. 325 Lake Shore Drive, Lake Benton, MN. (507-368-4399) Facebook: LakeBentonResort Email: LakeBentonResort@gmail.com

WOODEN DIAMOND B&B

The Wooden Diamond is a year-round B&B, subtly hidden on the shores of Lake Benton Lake, offering a truly unique and memorable experience! The "Parsonage Room" offers a large guest suite with private bath, kitchenette, and free wireless connectivity. Choose to be outdoors? The private deck overlooking the lake with your morning coffee and use of the fire-pit for those cool nights add to your enjoyment! Breakfast may be served in your room or in the three-season room. The "Farmhouse Room" takes you back to a simpler time with its comfy 4-poster beds and main floor ease. Each room will sleep up to 4 guests!. Call Bill and Jenifer for reservations (507) 828-3929 or email: Billandjenifer@gmail.com Facebook: WoodenDiamondB&B. Find us on Airbnb!

Kjergaard Sports

1951 200th Avenue | Lake Benton, MN
507-368-4696

WHERE THE SERVICE AND THE PRICE ARE WORTH THE TRIP!



Hours:
Monday-Saturday 9-7
Sunday 1-6

- Large selection of firearms
- Full line of Beretta, Benelli & Browning
- Dog training supplies
- Hunting clothing items
- Reloading Supplies
- Danner Boots
- Buy, Sell and Trade!

www.kjergaardsports.com
kjergaardguns@itctel.com

Located from Lake Benton: 4 miles north on Hwy 75, 1 mile east on Co. 13, ½ mile north on 200th Ave

Lake Benton Grocery

A small-town grocery store that specializes in customer service, fresh cut meats, fresh produce, and great values. Serving others is why we do it.



104 E. Benton Street
Lake Benton, MN 56149

507-368-4585

Facebook: BoltLBGrocery

Open: 8:30 a.m.-6:30 p.m., Mon-Sat
10 a.m.-2 p.m., Sunday

BUFFALO RIDGE ANTIQUE SHOP

108 Benton Street, Lake Benton, MN 56149

507-215-5584

Owner: Shirley Sandberg

Antiques, Collectibles, Furniture, Lamps, and more!



Summer Hours: 10 a.m. - 4 p.m. (Closed Wednesdays)
Winter Hours: 11 a.m. - 2 p.m. (Closed Wednesdays)

Southwest Sanitation

Marshall, MN
507-532-4500



Locally owned & operated by Dan & Scott Ritter

Commercial • Rural • Rolloffs • Residential • Recycling • Portable Toilets

Lake Benton Realty, Inc.

Lisa J. Willert
Broker



Phone: 507-530-5361

E-mail: lisa.willert@outlook.com

Website: www.lakebentonrealty.com

1637 Edgewater Dr., Lake Benton, MN 56149

ROGGENBUCK

Tree Service



TREE-TRIMMING

TREE REMOVAL

STUMP GRINDING

876 West Benton St. | Lake Benton, MN
507-368-4833 (Work) | 507-820-2408 (Cell)

BUSINESSES AND SPECIALTY SHOPS

The beauty and charm of Lake Benton is magnified by the shopping opportunities available. You will find our fine stores and shops ready to cater to your every need!

AUSTINS AUTO SPA AND COATINGS

117 N. Center St., Lake Benton, MN (507-308-0885)

AVERA LAKE BENTON MEDICAL CLINIC

109 E. Benton St. (507-368-4323) Open Mon/Wed/Fri

BLONDIE'S HAIR STUDIO

103 W. Benton St. (507-368-4441). Hair and beauty salon.

BUFFALO RIDGE ANTIQUES

has furniture, vintage clothing, collectible and antiques galore located at 108 East Benton. (507-215-5584) for appointment.

BUFFALO RIDGE STATE AGENCY

located at 107 N. Center St. (507-368-6693). For all your insurance needs.

COUNTRY SIDE NURSERY

A local nursery providing landscaping services and retail sale of flowers, plants, trees and shrubs at their shop, located at 1186 County Road 118 in rural Lake Benton. Call Steve or Penny at (507-368-9622)

CPR – COURTEOUS PROFESSIONAL REPAIR

Is located at 309 North Center Street. Owner, Larry Robbins, has over 40 years of experience repairing anything from bicycles to industrial robots.

DOG TRAINING BY JESS

Safe, fun and effective dog training for all breeds and ages! Contact Jess at (612-930-3641)

DSI (DEVELOPMENT SERVICES INC.)

Providing services and solutions to businesses and communities for economic development and management. (507-694-1552)

ELKTON ELECTRIC

101 Elk St. So. Elkton, SD (605-542-2000) Licensed electrician.

FIRST SECURITY BANK

located at 107 N. Center St. (507-368-4261). Help with all your full service banking needs.

FOREVER FOOTCARE, LLC

Enhance foot health with a Nurse Certified in Foot Care! (605-651-1362)

GAIL'S GOURMET GOODIES

Unique and delicious baked goods, delivered fresh! Call Gail at (507-368-4302)

HAPPY HOUND GROOMING

is located at 109 South Center Street, in downtown Lake Benton. The owner/operator offers dog grooming by a certified dog groomer. Call for appointment. (507-530-1251)

HARTQUIST FUNERAL CHAPEL

102 S. Fremont St. Lake Benton, MN (507-368-9385) Providing funeral and cremation services.

HIDEAWAY CAFE AND COFFEE HOUSE

is located at 116 Center St. S., Lake Benton, MN (507-368-3668)

HOMER'S BAR AND GRILL

is located at 114 Center St. S., Lake Benton, MN (507-368-4507)

KINNER & CO. LTD.

104 S. Center St. Lake Benton, MN. Local Accounting firm, to provide assistance with taxes, bookkeeping and investments. Contact Jenny at (507-368-2711)

KJERGAARD SPORTS

is the largest gunshop in the area, just outside of Lake Benton. Call Steve at (507-368-4696) Facebook: KjergaardSports

LAKE BENTON GROCERY

located at 104 E. Benton St. (507-368-4585). Offering grocery, produce, meat, bakery and floral.

LAKE BENTON REALTY

1637 Edgewater Dr. (507-530-5361) – real estate broker – email: lisa.willert@outlook.com

LAKE BENTON RESORT

located at 325 Lake Shore Dr. (507) 368-4399 Lakeside lodging, food, bar and off-sale liquor store.

LAKE BENTON STORAGE

for your offsite storage needs. Email: LBStorag@itctel.com (507) 829-6693

LAKE BENTON VARIETY STORE

102 S. Center St. Lake Benton, MN (507-820-1233) A unique variety of refurbished and second-hand items, including custom t-shirt printing.

LAKE BENTON VALLEY JOURNAL

Part of Buffalo Ridge Newspapers located at 120 N. Center (Tyler, Lake Benton and Hendricks). (507-368-4604)

MARY'S SHOPPE

located at 120 N. Center St. (507-368-9530). Hair and beauty salon.

MICHELLE WEBER STUDIO

128 E. Benton St., Lake Benton, MN (507-530-4037) Art gallery

MULDER PRODUCE AND GARDEN GATE GREENHOUSE

402 E. Benton St. Lake Benton, MN (605-651-3798) Seasonal Farmer's Market and Greenhouse

PATRICK HAYNES COMPUTERS

Local owner/technician providing computer repairs, software/hardware upgrades, advice and training. Call Pat at (507-368-2755)

PLUTO BOES LEGAL PLLC

A law firm that cares for you and your family, including services related to Medical Assistance, Disability Assistance and Estate Planning. Call (1-866-457-3131) to schedule a personal appointment. Located at 106 N. Center Street in downtown Lake Benton.

RETHWISCH & SON AND THE SHOPPES

101 N. Center St., Lake Benton, MN (507-368-4243) Local hardware store and lumber supplier. The Shoppes offer retail clothing and seasonal decor.

ROGGENBUCK TREE SERVICE

876 W. Benton St. Lake Benton, MN (507-368-4833) Tree trimming and removal.

S&E AUTO CLINIC

located at 108 W. Benton St. (507-368-9288). Automotive repairs.

STATION ONE

One-stop shop for gas, food, snacks and beverages. (507-368-4204)

WESTERN VETERINARY CLINIC

located 4 miles east of Lake Benton on Hwy 14, at 1495 Cty Hwy 6 (507-368-4251).

WOODEN DIAMOND B&B

located at 1593 Shady Shore Dr. (507-828-3929). Lodging on the east lakeshore.

Covering all the news

on the Buffalo Ridge!



Buffalo Ridge Newspapers

Tyler Tribute • Hendricks Pioneer • Lake Benton Valley Journal

Valley Journal

Lake Benton

Lincoln County's oldest newspaper, continuing the Lake Benton News

120 N. Center, P.O. Box 328

Lake Benton, MN 56149

507-368-4604

lbveditor@gmail.com

Tyler Tribute



251 N. Tyler Street, P.O. Box Q

Tyler, MN 56178

507-247-5502

tylertribute@gmail.com

Hendricks PIONEER



202 S. Main Street Plaza, P.O. Box 5

Hendricks, MN 56136

507-275-3197

hendrickspioneer@gmail.com

Lake Benton Economic Development Authority

Assisting with the expansion of existing business and the development of new business.

The members of the Economic Development Authority (E.D.A.) board work together with other organizations, individuals, and agencies so that Lake Benton can reach its business potential and keep abreast of the changes and progress occurring in the business world.



DUPLEX UNIT FOR LEASE



COMMERCIAL AND RESIDENTIAL LOTS AVAILABLE

For business locations, inquire about the lots available in the Johnson Commercial Park development.

For residential rentals, inquire about availability of 4-plex units and the newly developed duplex units.

Please contact the Lake Benton Economic Development Authority at 507-368-4641 ext. 1





Photo by Rachel Rudebusch - 3rd Place Photo Contest Winner

2024

January 12
 February 17
 March 16
 March 23
 April 12-14, 19-21
 May 11
 May 24-25
 May 27
 June 1
 June 14-16
 June 15
 July 13
 July 13
 July 17-21, 24-28
 August 31
 September 27-29, October 4-6
 October 31
 November 9
 November 11
 Nov 29-Dec 20
 December 7
 December 13
 December 14

2025

January 10 Sportsman's Club Annual Meeting - Fish Fry
 January 25 Sportsman's Club Ice Fishing Tournament
 March 15 Sportsman's Club Wild Game Feed
 March TBD LB Area Foundation Gala - LB Community & Event Center
 April TBD LB Opera House Spring Play - "Kitchen Witches" (2024)
 May 10 Minnesota Walleye Opener
 May 23-24 City Wide Rummage Sales
 May 26 Memorial Day Program
 June 7 Sportsmen's Club Annual Fishing Tournament
 June 13-15 Saddle Horse Holiday Weekend Celebration
 June 14 Lake Benton Opera House "Broadway Meets Lake Benton"
 July 12 Lake Benton Lake Association - Pork Sandwich Fundraiser/Member Drive
 July TBD Kjergaard Sports Buffalo Ridge Demo Shoot - Kjergaard Sports
 July TBD Lake Benton Opera House Summer Musical - "Tarzan" (2024)
 August 30 King of Trails Market Day - along Highway 75
 October TBD Lake Benton Opera House Fall Production "Clue" (2024)
 October 31 Lake Benton Chamber Halloween "Trick or Treat on Center Street"
 November TBD Lake Benton Opera House Children's Theatre
 November 11 Veteran's Day Program - Lake Benton Elementary School
 Nov 28-Dec 19 Lake Benton Businesses - Holiday Open House Events
 December 6 Lake Benton Opera House "Christmas in Lake Benton"
 December 12 Lake Benton Chamber Holiday Lighting Contest
 December 13 Santa Claus Day - Lake Benton Elementary School

