

Bringing you up to date on KMA's unique architectural product collection!



Spring Is In The Air! It's that wonderful time of year where the days get longer, the air is warm and we all get excited to enjoy the outdoors. The warm sunshine and beautiful colors in nature can really brighten our day and office.

In our newsletter this month we'll be highlighting some products that will make this changing of seasons brighter and simpler.

NEW FROM MECHOSHADE!

iQ3 DC

An All-New Wireless Shade Solution



Industry-Leading Reliability with Obstacle Detection

Shades can be damaged during operation when they run into obstacles like furniture or objects resting on a window sill. These obstructions typically cause the fabric to telescope, potentially damaging or possibly even dislodging the entire shade.

Patent-pending, obstacle detection within the iQ3-DC motor helps to avoid these situations by monitoring the shade movement and sensing changes. This breakthrough feature can help prevent disruptive and costly shade maintenance situations, and reduce work space disturbance.

An All-New Wireless Shade Solution

iQ3-DC eliminates the expense and complexity of local control wiring. This motorized solution marries MechoNet's intelligence and 2-way communication with the convenience of wireless or wired control.

A 2-way wireless system improves real-time performance of the motorized shade system, enhancing long term reliability and ensuring that commands are received, acted upon and confirmed back to the control.

Improved Room Economics

When planning with iQ3-DC motors, up-to a 60% cost reduction is possible when powered by Power Panels. Unlike traditional wireless planning, cost per zone can now be optimized with a combination of higher cost wireless and lower cost serial motors. The first iQ3-DC motor distributes power and MechoNet sends commands to all other motors

The result is a system that reduces wiring requirements and eliminates the need for wireless infrastructure equipment (repeaters, routers, etc.).

With the days getting longer and weather getting nicer a lot of us enjoy spending our days outside. When we have to be inside looking out we appreciate landscape views and sunlight.

However, bright days can also be a bit of a nuisance when that sunshine is coming in directly through the window. Making a room too bright and warm, unfiltered light can make cooling costs more expensive.

Motorized shades help to block out excess sunlight and help keep spaces cooler by blocking out the extra heat. Being motorized also adds ease of use.

Introducing the new Mecho iQ3 DC Motor!

iQ3-DC Features

- Hybrid network solution with 2-way wireless and serial communication.
- ETL Listed to UL325 to ensure the highest quality and reliability.
- Obstacle detection in both up and down directions.
- Auto return to automation.
- Pocket heat gain sensing.
- Ultra-quiet operation (<40dBA)
- Variable speed control between 10-28rpm.
- Best-in-class 4nM power.
- Works with Mecho/7, Electro/3 and Electro/1 & 2 bracket systems.
- Integrates with third party controls and SolarTrac automation via Standard EnOcean messaging.
- MechoNet scalability without requiring repeaters or routers.

Concertex®



Concertex®



Spring 2022 – Elemental Collection



The Elemental Collections features 9 performance upholsteries that are inspired by the five enduring elements of nature. It is an ethereal collection that provides an everyday antidote to a beautifully unpredictable world.

Earth: Bloom & Sanctuary

Wind: Ostro & Sirocco

Fire: Flare & Scoria

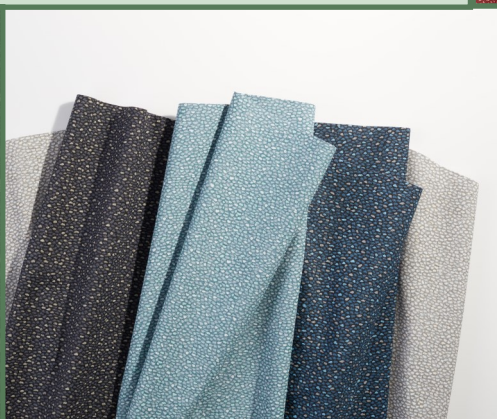
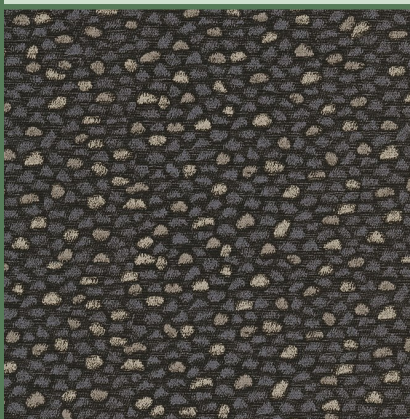
Sky: Orb & Asteria

Water: Serene

Orb - Inspired by Sky

The circular patterns that adorn this fabric seek to emulate the vast nature of our expansive and starry sky. With light metallic etchings in the material, a glowing shimmer brings to light the sparkle of stars.

- Content: 100% Polyurethane
- Finish: Graffiti-Free
- 200,000+ Double Rubs
- Bleach Cleanable
- Complies with Healthier Hospitals



Scoria - Inspired by Fire

When a volcano erupts and lava pours onto the surface of our earth, what remains is a smooth, cool pebble that once held a uniquely fiery power. Inspired by this act of nature, our scoria fabric features a pebbled pattern

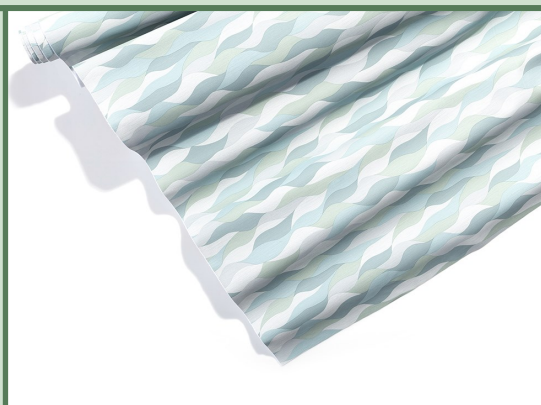
placed against a backdrop of earthy tones.

- Content: 100% Silicone, Inherently Graffiti-Free, Middle – 100% Polyurethane
- Backing: 100% Polyester
- 200,000+ Double Rubs
- Bleach Cleanable
- Complies with Healthier Hospitals

Serene - Inspired by Water

Silicone Hybrid

- Content: 100% Silicone, Inherently Graffiti-Free, Middle – 100% Polyurethane; Backing: 100% Polyester
- 200,000+ Double Rubs
- Bleach Cleanable
- Complies with Healthier Hospitals



Ostro - Inspired by Wind

Inspired by the movement and power of southerly winds on the Mediterranean Sea, our Ostro non-PVC/PU fabric was designed to be equal parts strong and breezy. As a uniquely breathable faux leather, Ostro is more comfortable to sit on with increased circulation.

- Content: 98% Polyester, 2% Silicone; Backing: 100% Polyester
- 500,000+ Double Rubs
- Breathable Coated Fabric
- PVC/Phthalate Free, No added FR/Anti-Bacterial

KMA & Associates strives to be your # 1 resource when it comes to specifying architectural products and furnishings.

Please reach out for assistance with your next project.

KMA & Associates

Please check out our website at www.kma.bz and like us on Facebook, Instagram and LinkedIn to see all the latest and greatest news from KMA!