

August, 2021

THE KMA SPEC

Architectural Products & Furnishings

KMA & Associates Great learning Environments!

www.kma.bz



Bringing you up to date on KMA's unique architectural product collection!



Back to School Time is Near! We are starting to see families preparing for getting students back in school. In this issue, we'll highlight products that enhance productivity in learning environments. As a design professional, maybe you specialize in this segment. Regardless, this is a great time to explore the elements of what makes an environment conducive to learning. Many things come into consideration such as acoustics, visual communication, daylighting, and furnishings. KMA & Associates represent many products that work well in education projects. Read on!

According to a white paper commissioned in 2010 by the Ceilings & Interior Construction Association, (CISCA) and prepared by the Informedesign Research Desk at the University of MN, it was found that classrooms in the US have a speech intelligibility rating of 75% or less, meaning that every 4th word spoken is not understood! Excessive background noise has a negative effect on student learning and performance. Background noise can come from sources from the outside, such as road traffic, as well as noise from the inside such as adjacent classrooms, HVAC, and other equipment. To minimize disruption to speech intelligibility in the classroom, consider acoustical design enhancements such as high performance ceiling tiles, baffles, banners and other sound absorbing surfaces to reduce reverberation. If you would like to view this referenced white paper please visit: www.cisca.org.



Left: ecoustic Arbor Alto from Unika Vaev. Easily assembled and suspended using Unika Vaev's proprietary mounting hardware. With a minimum NRC rating of 0.80, Arbor Alto presents a unique sound absorbing solution and a beautiful means to create interest for any ceiling application. Available as a standard size of 48" X 48", custom sizes can also be quoted and easily produced. 100% PET. Arbor Alto contributes to LEED MR Credit 4 Recycled Content.



Center Left: Depicted here is Unika Vaev's Lina Cylinders. A love of texture and sculptural forms led Icelandic artist and designer Bryndís Bolladóttir to develop Lina, a range of colorful, cylindrical products made of Icelandic felted wool. Lina Cylinder is suspended from ceilings with a proprietary bracket system. Lina Cylinder is available in 18 vibrant colors and in two lengths, 47.2" and 94.5".

Unika Vaev offers many CAD files of products. Just ask!

Read Unika Vaev's blog to learn "[15 Tips for Improving Acoustics in Classrooms](https://unikavaev.com/blog/15-acoustic-solutions-for-classrooms/)":

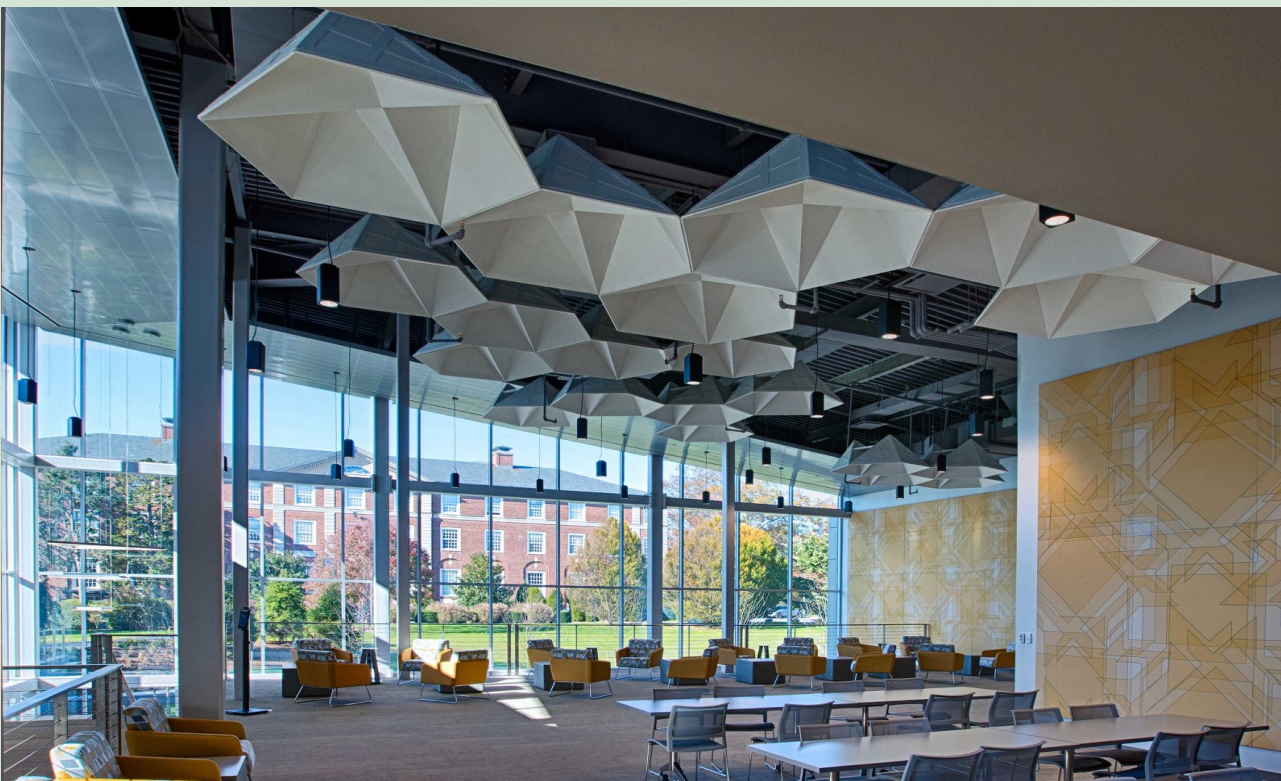
<https://unikavaev.com/blog/15-acoustic-solutions-for-classrooms/>

Arktura is another source for outstanding acoustical products.

Bottom Left: Here we have Arktura's SoundStars® working their acoustical magic in this monumental space. Pictured is the Ruth S. Harley University Center in Garden City, New York. SoundStar® ceiling system's hexagonally shaped cellular coffers offer a scalable way to add geometric dimensionality and disrupt sound's ability to travel across a space. Each module is comprised of angled surfaces made from Soft Sound® acoustical material (100% PET plastic with up to 60% recycled content) with a metal substructure. Choose from 12" or 24" deep modules, to mix and match as desired.

Architect: Lori Kupfer Architect.

Image credit: Damira Maricic Photography.



Learning Environments Continued

—Page 2!





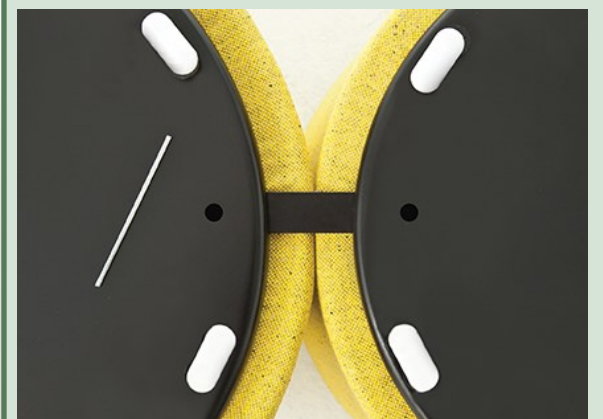
And Now for the Windows! Introducing the Newest Advancement in Performance Shade Cloth From Mecho: SoHo Elevate



Powered by **PROTX2**, SoHo Elevate shade cloth provides an additional layer of performance with patent-pending, medical-grade, metal-free technology. In addition, this first-of-its-kind innovation is durable for the life of the product and cleanable. The long lasting effect of **PROTX2** is backed up by Mecho's advanced durability testing. This collection features thin, finely woven yarns in a 2 x 2 basket weave pattern with a soft hand and smooth texture to create elegant solutions for any project. Visit www.mechoshade.com to read more and order samples. Remember, Mecho as your trusted partner to provide solutions for controlling classroom glare and contributing to effective daylighting



Left and Below: Seating for creative, spontaneous thinking by **Nienkamper!** This is the **Moment Stool**. Moment is an ottoman, stool, bench depending on the configuration and perception. It can be used as one single element or link them together to create an endless seating arrangement fun. The round shape makes Moment non-directional and can therefore be used in any space. Moment would be ideal in libraries or break out spaces.



VARYA 2.10L

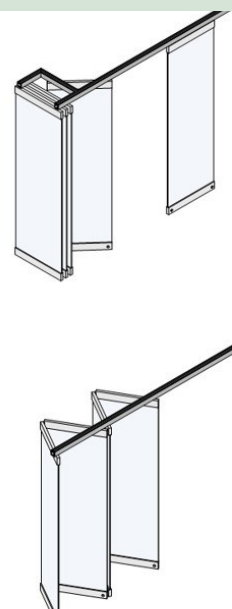


Left: From **Sandler Seating's INCLASS Collection**, the **Varya 2.10L** with Tablet Arm. We're sure you can think of many places where this chair would make a good fit! This arm chair features a cushioned seat attached to a polypropylene shell on a 4 leg epoxy coated base with casters. Note: DWG and RVT files are available for download. Also—visualize your choice of finishes and colors by using the Configurator tool on the Sandler Seating website:

<https://www.sandlerseating.com/>

Right: More for your learning environment from Sandler Seating! Here is the **BRAINSTORM 409**, a Flipchart on a steel frame with lockable castors. You'll find even more handy items like this in the BRAINSTORM series including mobile tackboards.

Bottom: Need to divide a classroom space? **CARVART** has solutions that work as hard as the teacher! Consider the **glassSTACKWALL Framless**. All of CARVART's movable walls are unique space-dividing solutions designed to custom fit into an opening and operate easily for years to come. Each solution is custom dimensioned for each project.



KMA & Associates wishes a safe and happy school year to all the families in our territories!

GOOD LUCK!



KMA & Associates strives to be your # 1 resource when it comes to specifying architectural products and furnishings.

Please reach out for assistance with your next project.

KMA & Associates. www.kma.bz

Please check out our website at www.kma.bz and like us on **Facebook**, **Instagram** and **LinkedIn** to see all the latest and greatest news from KMA!