

August, 2022

THE KMA SPEC

Architectural Products & Furnishings

KMA & Associates

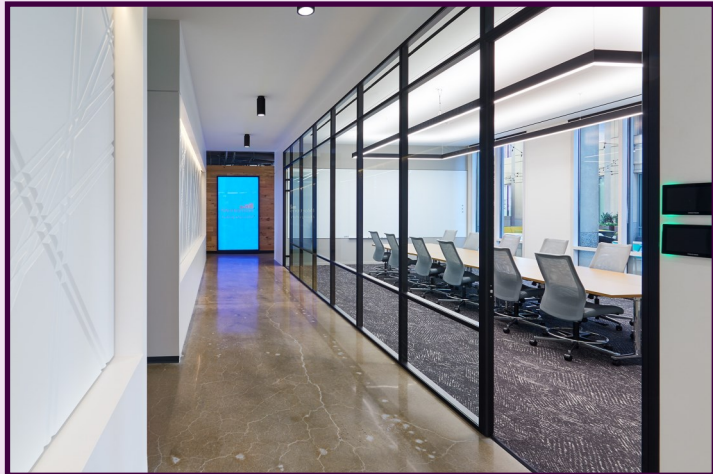


Bringing you up to date on KMA's unique architectural product collection!



KMA Is Excited To Announce A New Line! Now introducing dHive, a glass wall system. dHive, which is short for Dynamic Hive, is a US-based manufacturer with over two decades of experience providing architects and designers innovative environmental solutions.

They're built on the promise that design with substance can turn professional environments into more beautiful, efficient, and empowering spaces. Priding themselves on attention to detail and being functional.



Benefits of dHive:

High end modern aesthetic:

dHive solutions combine slim framing, along with attention to details to make a strong visual difference on any of your projects.

Edge mounted glass, mitered glass corners, hydraulic brakes at sliding doors, numerous choice of finishes, no silicon, invisible gaskets are part of the standards at dHive.

Superior Acoustic Performance:

dHive systems are all available in single and double glass and have been lab tested up to STC 45.

Whether you choose single or double glass, our solutions have a reputation for over performing most systems available in the market.

Through the way our systems are constructed to the efficiency of our doors seals, we want to make sure users of dHive solutions benefit from the best privacy.

Easy process, shorter lead times:

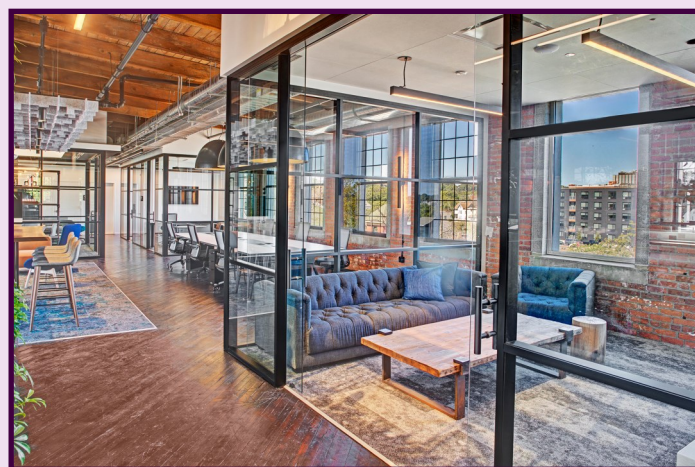
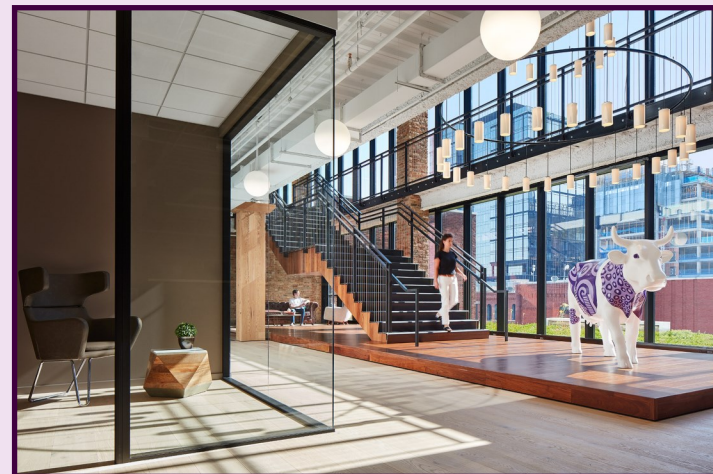
dHive processes and sequence of project solve industry issues. Quotes and shop drawings are turned around faster, production started earlier, leading to an overall reduction of the lead time by 50% vs other solutions in the market.

Our teams are dedicated to their projects, and support all parties involved so that to make sure every installation is a success.

We care.

Value:

dHive is generally considered as the best value in the top tier market. High end details, high quality operations, at attractive pricing.



Continued—Page 2!



Features of dHive Wall Systems:



Minimalistic Framing:

Low profiles and slim verticals without compromising site adjustability

- Clean Modern Aesthetic
- 1 3/8" Track-Height/ Stud Width
- 3 1/4" System Depth

Frame Finishes

- Clear and black anodized
- Custom powder coating (gloss or matte)
- Hardware can be finished to match

Can Integrate technology

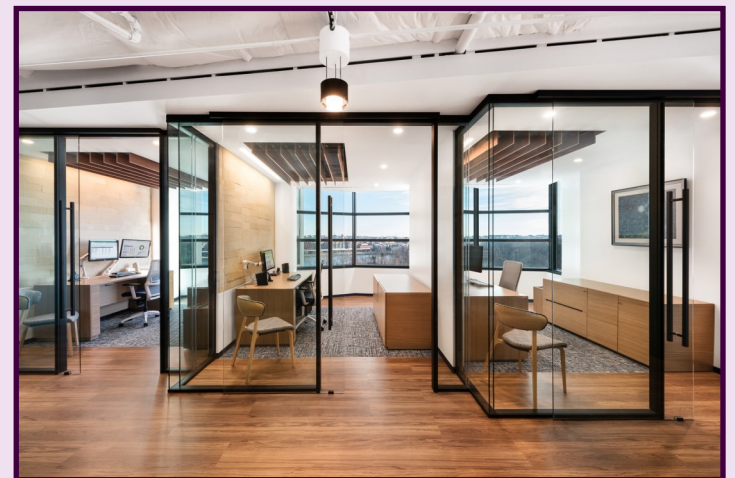
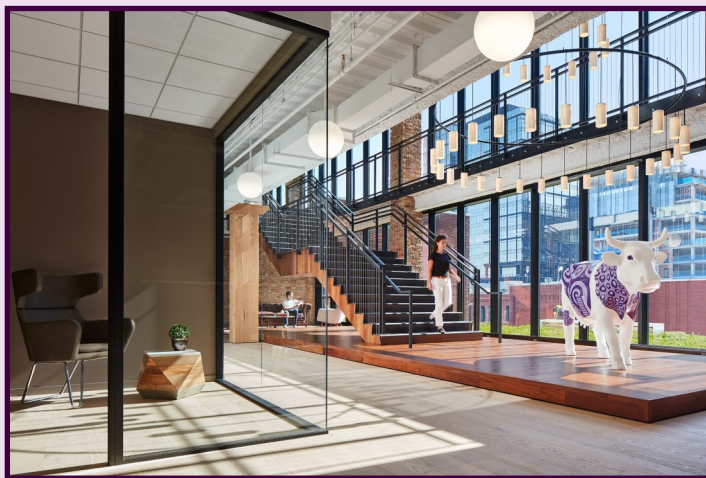
Edge– Mounted Panels:

Off-centered glass creates continuity and better transitioning between partitions and dry-walls/bulkheads, while allowing for an optional second layer of glass.

Seamless Connections:

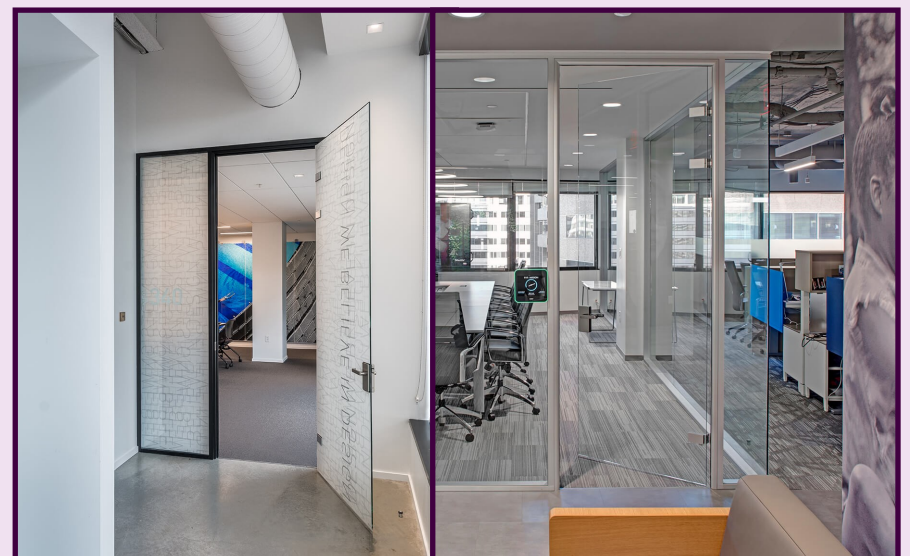
Showcases the attention to details

- Concealed Gaskets
- No silicon nor polycarbonate; invisible butt joint seals, cleaner and more durable.



Glass Doors:

- Sliding or Full– Swing
- Full Frameless
- Invisible clamps or concealed Hinges
- Hydraulic brakes as standard. Soft close option available
- Acoustic Seals



Solid Doors:

- Swing
- Full solid core or framed wood
- Available in any finish



We look forward to presenting dHive to you this year. Please reach out to us if you have any questions or are interested in hearing more about dHive and their products.

KMA & Associates strives to be your # 1 resource when it comes to specifying architectural products and furnishings.

Please reach out for assistance with your next project.

KMA & Associates

Please check out our website at www.kma.bz and like us on **Facebook**, **Instagram** and **LinkedIn** to see all the latest and greatest news from KMA!