

AC DALTON Alfalfa



✓ Alfalfa is the most important forage species in North America and is considered the “Queen of Forages”.

✓ Alfalfa is well adapted to a wide range of soil and climatic conditions but does best on deep loam soils with a neutral pH.

✓ Alfalfa is sensitive to acidic, water logged soils and will not persist under these conditions.

✓ Alfalfa requires regrowth after last harvest and prior to killing frost in order to survive the winter.



**The Brand
for
Your Land!**

Description

AC DALTON was developed in Western Canada at the Agriculture Canada Research Centre by Dr. Surya Acharya. DALTON is intended for hay, dehydration and silage in both arid and irrigated environments. Rapid regrowth provides for high yields under irrigation.

AC DALTON is similar to Beaver in fall dormancy under irrigation (1) and slightly higher under dryland conditions (2). Due to its disease resistance and cold tolerance the productive stand life of this cultivar is expected to be longer than many existing cultivars. Seed is produced in Western Canada.

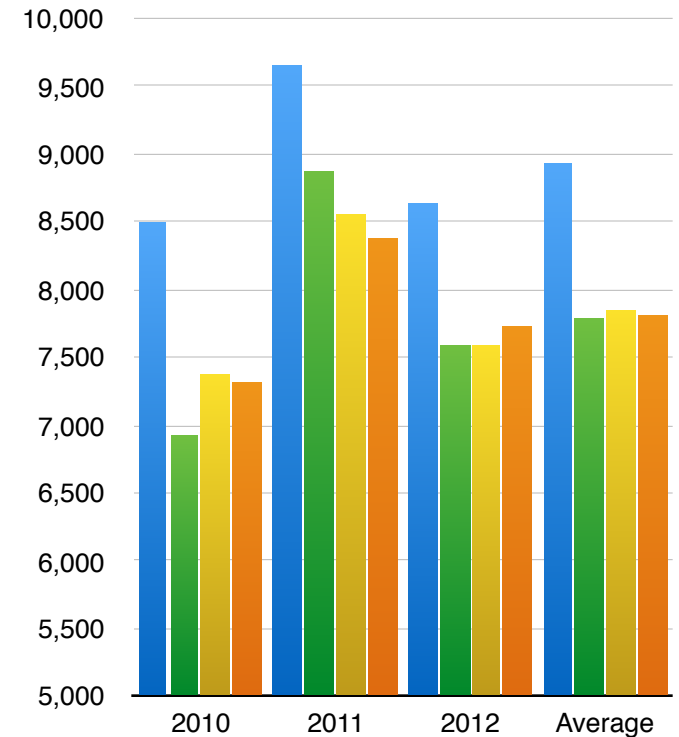
Characteristics

AC DALTON has the following traits that make it the preferred alfalfa in British Columbia.

- Very Winter-hardy
- Rapid Re-Growth
- Very Leafy Trifoliolate
- Highly Digestible
- Improved Disease Resistance
- Tap Rooted
- Deeply Set Crown
- Persistent

■ AC DALTON ■ Stealth SF
■ Tophand ■ Phabulous

Yield Data



Source: BC Forage Council Cariboo Variety Trials at Soda Creek
2010 - 2012 Harvest Years kgs per ha dry matter

Terra Seed Corp.

1-800-282-7856

Gordon Dawson

Cell: 604-220-3084

gdawson@terraseco.com

830 Taylor Rd Bowen Island BC V0N1G1