

# EXTREME HD Alfalfa



Branch & Tap Root



Extremely Leafy

✓ Alfalfa is the most important forage species in North America and is considered the “Queen of Forages”.

✓ Alfalfa is well adapted to a wide range of soil and climatic conditions but does best on deep loam soils with a neutral pH.

✓ Alfalfa is sensitive to acidic, water logged soils and may not persist under these conditions.

✓ Alfalfa requires regrowth after last harvest and prior to killing frost in order to survive the winter.



## Description

The 90 parent plants of EXTREME HD were selected phenotypically based on high forage yield, **high forage quality**, good winter survival and the absence of root and crown diseases

EXTREME HD has high resistance to Anthracnose (race 1), Bacterial wilt, Fusarium wilt, Verticillium wilt, Phytophthora root rot, and Aphanomyces root rot (race 1).

EXTREME HD is a Fall Dormancy 4 alfalfa.

## Characteristics

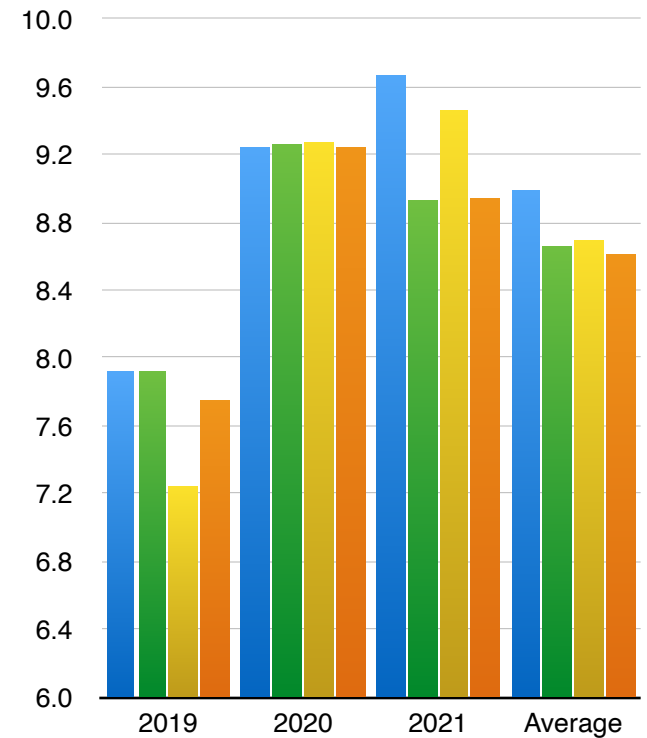
EXTREME HD has the following traits that make it a preferred alfalfa in British Columbia.

- Extreme High Digestibility
- Rapid Re-Growth
- Very Leafy
- Very High Quality
- Highly Disease Resistance
- Branch and Tap Rooted
- Persistent
- Performs in Heavier Soils

*The Brand  
for  
Your Land!*

EXTREME HD Persist III  
HI-Gest HybriForce 4400

## Yield Data



Source: Penn State University at Landisville

2019-2021 Harvest Years tons per acre dry matter

**Terra Seed Corp.**

**1-800-282-7856**

**Gordon Dawson**

**Cell: 604-220-3084**

**gdawson@terraseco.com**