

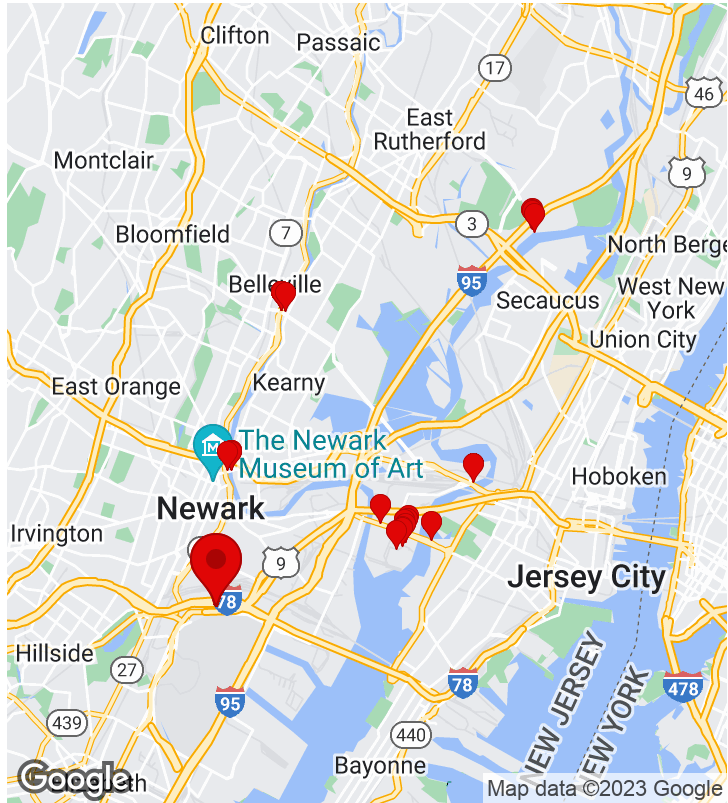
# New Jersey Data Collection - Final



Investigation of data points along the Hackensack River, Passaic River, and the South Kearny Neighborhood.

## January 9, 2023

7/9/2023, 8:41:40 PM UTC



### CREATED

1/9/2023, 1:24:44 PM UTC  
by Monique Rydel

### UPDATED

7/9/2023, 8:41:40 PM UTC  
by Monique Rydel

### LOCATION

40.709833, -74.170553

## General Report Information

Start Date	January 9, 2023
End Date	January 12, 2023
River/Body of Water	Passaic River, Hackensack River
Personnel	Seth Jones, Monique Rydel, Susan Pulliam
Start Time	08:24
Travel Method	Land

## Weather Information

Air Temperature (c)	2.2
Wind Speed (mph)	2.2

## Site Locations (19 Items)

### Site Locations - 1. Hackensack, 1

#### Weather

Air Temperature (c)	2.2
Weather Condition	Mist
Wind Speed (mph)	2.2
Humidity (%)	89
Precipitation (mm)	0

#### Details for Site

Way Point Prefix	Hackensack
Way Point Number	1
Time at Way Point	09:14
Way Point Description	Manhole
Are there visible signs indicating a cable crossing?	No
Are there buried or visible cable(s) at location?	Yes
How many cables are visible?	Buried Cables at this location.
Is lead visible?	No

Was there a general sample collected?

No

### Specific Cable Information

General Site Notes

Active construction site. Bell Systems MHx4. Buried Cables at this location. Recommend coming back once construction wraps.

### Site Photos







## Site Locations - 2. Hackensack, 2

### Weather

Air Temperature (c)	2.2
Weather Condition	Overcast
Wind Speed (mph)	3.8
Humidity (%)	85
Precipitation (mm)	0

### Details for Site

Way Point Prefix	Hackensack
Way Point Number	2
Time at Way Point	09:58
Way Point Description	Manhole, Sign
Are there visible signs indicating a cable crossing?	Yes
Identify what the signs say.	Cable Crossing. Do Not Anchor. Call Before You Dig.
Are there buried or visible cable(s) at location?	Yes
How many cables are visible?	Buried Cables at this location.
Is lead visible?	No
Was there a general sample collected?	No

### Specific Cable Information



**General Site Notes**

Signs on both sides of the river. Bell Systems Manhole x8. Lincoln Park Wetlands & Nature Trail. Public access next to wetlands. Large vault and corridor at this location that would contain numerous cables. Recommend further investigation.

**Site Photos**







### Site Locations - 3. South Kearny, End A

#### Weather

Air Temperature (c)	3.9
Weather Condition	Partly cloudy
Wind Speed (mph)	5.6
Humidity (%)	72
Precipitation (mm)	0

#### Details for Site

Way Point Prefix	South Kearny
Way Point Number	End A
Time at Way Point	10:39
Way Point Description	Overhead, Exposed Leaded Telecom Cable



Are there visible signs indicating a cable crossing?	No
Are there buried or visible cable(s) at location?	Yes
How many cables are visible?	2
Is lead visible?	Yes
Was there a general sample collected?	No

### Specific Cable Information

General Site Notes	Approximately .4 miles of exposed leaded cable (2 cables, 2" diameter). Both ends are cut and shrink wrapped. Remnants of old hangers to help hold the lead cable. Photos uploaded from MRF iPhone. End A.
--------------------	--

#### Site Photos

### Site Locations - 4. South Kearny, End B

#### Weather

Air Temperature (c)	3.9
Weather Condition	Partly cloudy
Wind Speed (mph)	5.6
Humidity (%)	72
Precipitation (mm)	0

#### Details for Site

Way Point Prefix	South Kearny
Way Point Number	End B
Time at Way Point	10:45
Way Point Description	Overhead, Exposed Leaded Telecom Cable
Are there visible signs indicating a cable crossing?	No
Are there buried or visible cable(s) at location?	Yes
How many cables are visible?	2
Is lead visible?	Yes
Was there a general sample collected?	No

### Specific Cable Information

**General Site Notes**

Approximately .4 miles of exposed leaded cable (2 cables, 2" diameter). Both ends are cut and shrink wrapped. End B.

---

**Site Photos**











## Site Locations - 5. South Kearny, 1

### Weather

Air Temperature (c)	3.9
Weather Condition	Partly cloudy
Wind Speed (mph)	5.6
Humidity (%)	72
Precipitation (mm)	0

### Details for Site

Way Point Prefix	South Kearny
Way Point Number	1
Time at Way Point	11:03
Way Point Description	Overhead, Exposed Leaded Telecom Cable
Are there visible signs indicating a cable crossing?	No
Are there buried or visible cable(s) at location?	Yes
How many cables are visible?	2
Is lead visible?	Yes
Was there a general sample collected?	Yes

## General Sample (GS) Information (1 Item)

### General Sample (GS) Information - 1. Sediment Collection, 1

Type of Sample for GS	Sediment Collection
Location of Collected Sample - GS	Underneath Overhead Cable
Time of Collection - GS	11:04
Sample Prefix - GS	South Kearny
Sample ID (#) - GS	1
Additional Notes - GS (if any)	None.
Photo of GS Sample(s)	



## Specific Cable Information

### General Site Notes

Visible overhead, exposed leaded cable between South Kearny End A and South Kearny End B.

### Site Photos









### Site Locations - 6. South Kearny, 2

#### Weather

Air Temperature (c)	3.9
Weather Condition	Partly cloudy
Wind Speed (mph)	5.6
Humidity (%)	72
Precipitation (mm)	0

#### Details for Site

Way Point Prefix	South Kearny
Way Point Number	2
Time at Way Point	11:10
Way Point Description	Overhead, Exposed Leaded Telecom Cable
Are there visible signs indicating a cable crossing?	No
Are there buried or visible cable(s) at location?	Yes



How many cables are visible?	2
Is lead visible?	Yes
Was there a general sample collected?	Yes

### General Sample (GS) Information (1 Item)

#### General Sample (GS) Information - 1. Sediment Collection, 2

Type of Sample for GS	Sediment Collection
Location of Collected Sample - GS	Underneath Overhead Cable
Time of Collection - GS	11:10
Sample Prefix - GS	South Kearny
Sample ID (#) - GS	2
Additional Notes - GS (if any)	None.

Photo of GS Sample(s)



### Specific Cable Information

General Site Notes	Visible overhead, exposed leaded cable between South Kearny End A and South Kearny End B.
--------------------	---

Site Photos

#### Site Locations - 7. South Kearny, 3

### Weather

Air Temperature (c)	5
---------------------	---

Weather Condition	Sunny
Wind Speed (mph)	8.1
Humidity (%)	65
Precipitation (mm)	0

### Details for Site

Way Point Prefix	South Kearny
Way Point Number	3
Time at Way Point	11:18
Way Point Description	Overhead, Exposed Leaded Telecom Cable, Control Location
Are there visible signs indicating a cable crossing?	No
Are there buried or visible cable(s) at location?	No
Was there a general sample collected?	Yes

### General Sample (GS) Information (1 Item)

#### General Sample (GS) Information - 1. Sediment Collection, 3 Control

Type of Sample for GS	Sediment Collection
Location of Collected Sample - GS	Control Sample collected away from cable area.
Time of Collection - GS	11:18
Sample Prefix - GS	South Kearny
Sample ID (#) - GS	3 Control
Additional Notes - GS (if any)	None.

#### Photo of GS Sample(s)





**General Site Notes**

Control Site away from the .4 mile overhead, leaded telecom cable that runs between South Kearny End A and South Kearny End B.

**Site Photos****Site Locations - 8. South Kearny, 4****Weather**

Air Temperature (c)	5
Weather Condition	Sunny
Wind Speed (mph)	8.1
Humidity (%)	65
Precipitation (mm)	0

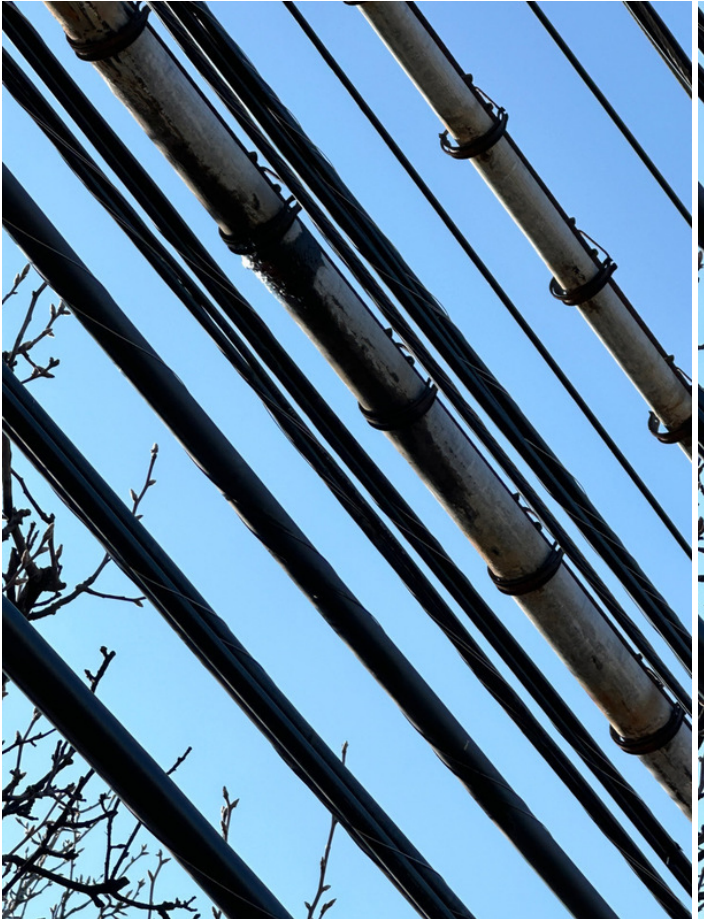
**Details for Site**

Way Point Prefix	South Kearny
Way Point Number	4
Time at Way Point	11:28
Way Point Description	Overhead, Exposed Leaded Telecom Cable
Are there visible signs indicating a cable crossing?	No
Are there buried or visible cable(s) at location?	Yes
How many cables are visible?	2
Is lead visible?	Yes
Was there a general sample collected?	Yes

**General Sample (GS) Information (1 Item)****General Sample (GS) Information - 1. Sediment Collection, 4**

Type of Sample for GS	Sediment Collection
Location of Collected Sample - GS	Underneath Overhead Cable
Time of Collection - GS	11:28
Sample Prefix - GS	South Kearny
Sample ID (#) - GS	4
Additional Notes - GS (if any)	Wet drip marks on cable.

**Photo of GS Sample(s)**







### Specific Cable Information

**General Site Notes**

Visible overhead, exposed leaded cable between South Kearny End A and South Kearny End B. See Photos under GSS Sample.

**Site Photos**

### Site Locations - 9. Passaic, 1

#### Weather

Air Temperature (c)	5
Weather Condition	Sunny
Wind Speed (mph)	8.1
Humidity (%)	65
Precipitation (mm)	0

#### Details for Site

Way Point Prefix	Passaic
------------------	---------

<b>Way Point Number</b>	1
<b>Time at Way Point</b>	11:54
<b>Way Point Description</b>	Manhole, Utility Building, ATT stickers on light post.
<b>Are there visible signs indicating a cable crossing?</b>	No
<b>Are there buried or visible cable(s) at location?</b>	Yes
<b>How many cables are visible?</b>	Buried Cable at this location.
<b>Is lead visible?</b>	No
<b>Was there a general sample collected?</b>	No

## Specific Cable Information

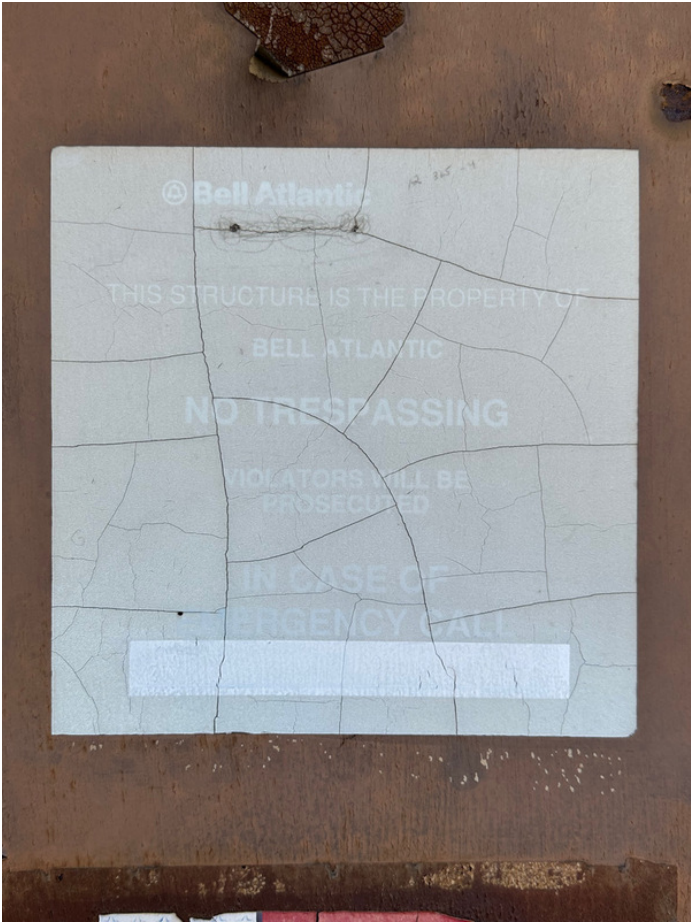
<b>General Site Notes</b>	Old Bell Utility Building. Bell Systems manholes, x7 (4 behind a chain link fence and 3 in the nearby grass area - all in close proximity to the building). New ATT Stickers on nearby light post. ATT Manhole x1 in the nearby street. This area is likely a hub or connection point for multiple cables.
---------------------------	--

## Site Photos













**Site Locations - 10. Passaic, 2**

**Weather**

Air Temperature (c)	6.7
Weather Condition	Sunny
Wind Speed (mph)	12.5
Humidity (%)	49
Precipitation (mm)	0

**Details for Site**

Way Point Prefix	Passaic
Way Point Number	2
Time at Way Point	15:26
Way Point Description	Cable Location
Are there visible signs indicating a cable crossing?	No
Are there buried or visible cable(s) at location?	Yes

How many cables are visible?	20 approximately
Is lead visible?	Yes
Was there a general sample collected?	See Specific Cable or Water

### Specific Cable Information (1 Item)

#### Specific Cable Information - 1. All

Cable #	All
Visible Length (ft)	20
Type of Cable (Power, Telecom, Fiber Optic, Other)	Telecom
Is this a leaded cable?	Yes
Is the cable(s) Terrestrial, Submarine or Both?	Submarine
Was there a sample collected?	Yes
How many samples collected?	2

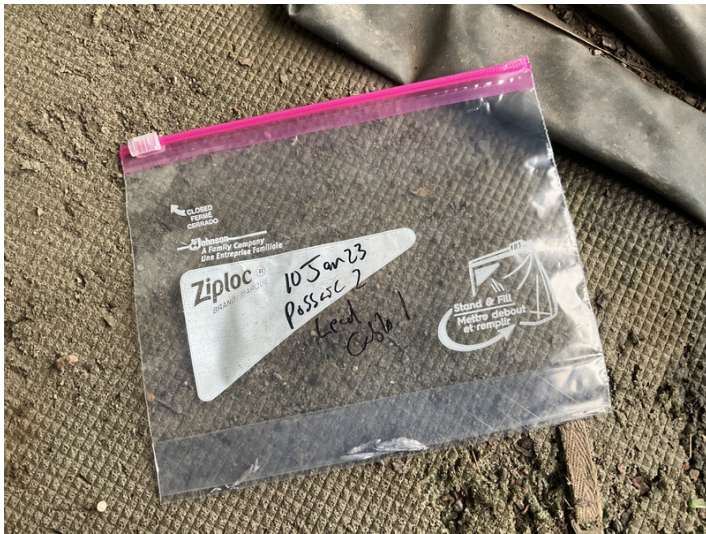
### Sample Information - Specific Cable (2 Items)

#### Sample Information - Specific Cable - 1. Lead Scraping, 2

Type of Sample	Lead Scraping
If more than one cable, what Cable was Sample collected from?	1
Time of Collection - Specific Cable	08:41
Sample Prefix - Specific Cable	Passaic
Sample ID (#) - Specific Cable	2
Additional Notes - Specific Cable Sample (if any)	No notes related to the field. The Sample was originally sent to the lab 12 January 2023. It was returned from the lab and resent 25 January 2023.

Photo of Specific Cable Sample(s)





**Sample Information - Specific Cable - 2. Water: Directly on Cable, 2**

Type of Sample	Water: Directly on Cable
If more than one cable, what Cable was Sample collected from?	All
Time of Collection - Specific Cable	08:46
Sample Prefix - Specific Cable	Passaic
Sample ID (#) - Specific Cable	2
Additional Notes - Specific Cable Sample (if any)	Collected near high tide.

**Photo of Specific Cable Sample(s)**



**General Site Notes** | There are approximately 20 cables underneath the bridge on both sides of the river.

**Site Photos**















### Site Locations - 11. Passaic, 2.1

#### Weather

Air Temperature (c)	6.7
Weather Condition	Sunny
Wind Speed (mph)	12.5
Humidity (%)	49
Precipitation (mm)	0

#### Details for Site

Way Point Prefix	Passaic
Way Point Number	2.1
Time at Way Point	15:35
Way Point Description	Cable Location
Are there visible signs indicating a cable crossing?	No
Are there buried or visible cable(s) at location?	Yes

How many cables are visible?	20
Is lead visible?	Yes
Was there a general sample collected?	No

### Specific Cable Information

General Site Notes	There are approximately 20 cables underneath the bridge on both sides of the river. See photos under Passaic 2.
--------------------	---

#### Site Photos

### Site Locations - 12. Passaic, 3

#### Weather

Air Temperature (c)	5.6
Weather Condition	Clear
Wind Speed (mph)	15
Humidity (%)	46
Precipitation (mm)	0

#### Details for Site

Way Point Prefix	Passaic
Way Point Number	3
Time at Way Point	17:15
Way Point Description	Cable Location, Armored
Are there visible signs indicating a cable crossing?	No
Are there buried or visible cable(s) at location?	Yes
How many cables are visible?	1
Is lead visible?	Yes
Was there a general sample collected?	See Specific Cable or Water

### Specific Cable Information (1 Item)

#### Specific Cable Information - 1. 1

Cable #	1
---------	---



<b>Visible Length (ft)</b>	20
<b>Type of Cable (Power, Telecom, Fiber Optic, Other)</b>	Telecom, Armored
<b>Is this a leaded cable?</b>	Yes
<b>Is the cable(s) Terrestrial, Submarine or Both?</b>	Submarine
<b>Was there a sample collected?</b>	Yes
<b>How many samples collected?</b>	2

### Sample Information - Specific Cable (2 Items)

#### Sample Information - Specific Cable - 1. Sediment Collection, 3

<b>Type of Sample</b>	Sediment Collection
<b>If more than one cable, what Cable was Sample collected from?</b>	1
<b>Location of Collected Specific Cable Sample</b>	Near the Cable
<b>Time of Collection - Specific Cable</b>	17:24
<b>Sample Prefix - Specific Cable</b>	Passaic
<b>Sample ID (#) - Specific Cable</b>	3
<b>Additional Notes - Specific Cable Sample (if any)</b>	None.
<b>Photo of Specific Cable Sample(s)</b>	



**Sample Information - Specific Cable - 2. Water: Directly on Cable, 3**

Type of Sample	Water: Directly on Cable
If more than one cable, what Cable was Sample collected from?	1
Time of Collection - Specific Cable	17:26
Sample Prefix - Specific Cable	Passaic
Sample ID (#) - Specific Cable	3
Additional Notes - Specific Cable Sample (if any)	None.

Photo of Specific Cable Sample(s)





**General Site Notes**

Cable is armored on the west side. About 15' of armoring before the cable is visible. Lead residue is visible near the water line, when the cable becomes visible.

**Site Photos**







**Site Locations - 13. Passaic, 3.1****Weather**

Air Temperature (c)	3.9
Weather Condition	Clear
Wind Speed (mph)	11.9
Humidity (%)	50
Precipitation (mm)	0

**Details for Site**

Way Point Prefix	Passaic
Way Point Number	3.1
Time at Way Point	17:18
Way Point Description	Manhole
Are there visible signs indicating a cable crossing?	No
Are there buried or visible cable(s) at location?	No
Was there a general sample collected?	No

General Site Notes | Bell Systems MHx2. DNO.

**Site Photos**



### Site Locations - 14. Passaic, 4

#### Weather

Air Temperature (c)	3.9
Weather Condition	Clear
Wind Speed (mph)	11.9
Humidity (%)	50
Precipitation (mm)	0

#### Details for Site

Way Point Prefix	Passaic
Way Point Number	4
Time at Way Point	17:32
Way Point Description	Control Location



Are there visible signs indicating a cable crossing?	No
Are there buried or visible cable(s) at location?	No
Was there a general sample collected?	Yes

### General Sample (GS) Information (1 Item)

#### General Sample (GS) Information - 1. Sediment Collection, 4

Type of Sample for GS	Sediment Collection
Location of Collected Sample - GS	Within Control Sample Limits
Time of Collection - GS	17:33
Sample Prefix - GS	Passaic
Sample ID (#) - GS	4
Additional Notes - GS (if any)	None.

Photo of GS Sample(s)



General Site Notes	See sample for site photo. Control sediment for Passaic 3
--------------------	---

Site Photos

## Site Locations - 15. Passaic, 3.2

### Weather

Air Temperature (c)	3.9
Weather Condition	Clear
Wind Speed (mph)	11.9
Humidity (%)	50
Precipitation (mm)	0

### Details for Site

Way Point Prefix	Passaic
Way Point Number	3.2
Time at Way Point	17:37
Way Point Description	Manhole, Buried Cable at this location.
Are there visible signs indicating a cable crossing?	No
Are there buried or visible cable(s) at location?	Yes
How many cables are visible?	Buried Cable at this location.
Is lead visible?	No
Was there a general sample collected?	No

### Specific Cable Information

**General Site Notes** | Bell Systems MHx2. Associated with Passaic 3 Site.

**Site Photos**





**Site Locations - 16. Hackensack, 3**

**Weather**

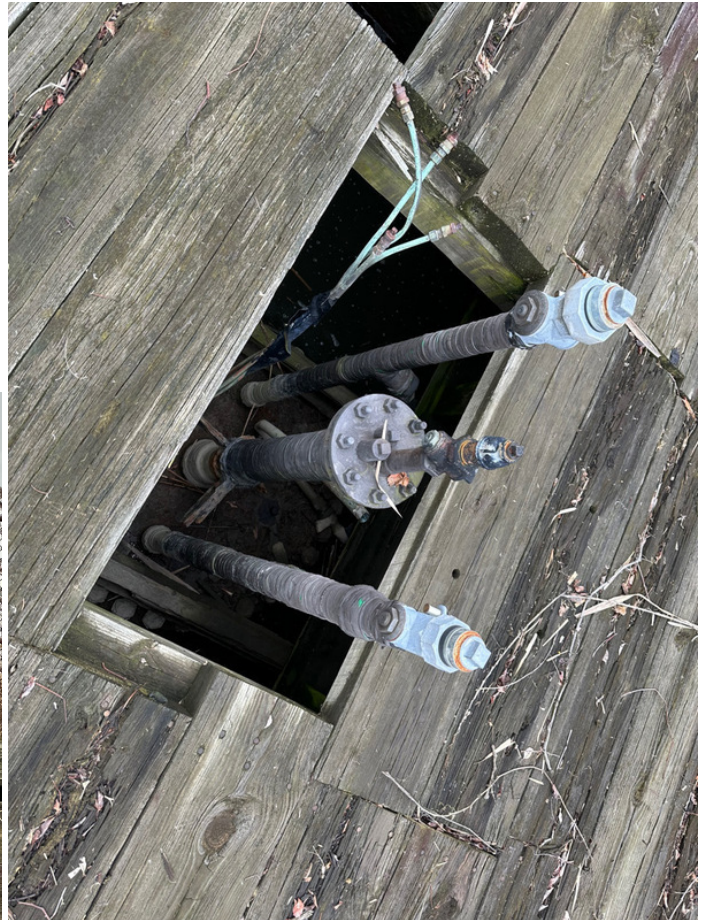
Air Temperature (c)	3.3
Weather Condition	Overcast
Wind Speed (mph)	6.9
Humidity (%)	64
Precipitation (mm)	0

**Details for Site**

Way Point Prefix	Hackensack
Way Point Number	3
Time at Way Point	10:04
Way Point Description	Cable Corridor, Sign
Are there visible signs indicating a cable crossing?	Yes
Identify what the signs say.	Unable to read. Gas Pipeline storage, possibly for the old ferry.
Are there buried or visible cable(s) at location?	No
Was there a general sample collected?	No

**General Site Notes** | Gas pipeline vault, possibly for the old ferry. Meadowlands Area. 2 different signs. On both sides of the river.

**Site Photos**



### Site Locations - 17. Hackensack, 3.1

#### Weather

Air Temperature (c)	3.3
Weather Condition	Overcast
Wind Speed (mph)	6.9



Humidity (%)	64
Precipitation (mm)	0

### Details for Site

Way Point Prefix	Hackensack
Way Point Number	3.1
Time at Way Point	10:15
Way Point Description	Telephone Pole
Are there visible signs indicating a cable crossing?	No
Are there buried or visible cable(s) at location?	No
Was there a general sample collected?	No

**General Site Notes** | Old Bell Telephone Pole. No cables found. Heavily overgrown and abandoned area in general.

### Site Photos



### Site Locations - 18. Hackensack, 3.2

## Weather

Air Temperature (c) | 3.3

Weather Condition | Overcast

Wind Speed (mph) | 6.9

Humidity (%) | 64

Precipitation (mm) | 0

## Details for Site

Way Point Prefix | Hackensack

Way Point Number | 3.2

Time at Way Point | 10:22

Way Point Description | Manhole, Bell Utility Building

Are there visible signs indicating a cable crossing? | No

Are there buried or visible cable(s) at location? | No

Was there a general sample collected? | No

**General Site Notes** | Old Bell Utility Building with indications that a cable was most likely present at one point going to the building. Bell Systems MHx1 (Reference Hackensack 3.3). There is newer AT&T flagging on the ground near the building.

## Site Photos









### Site Locations - 19. Hackensack, 3.3

#### Weather

Air Temperature (c)	3.3
Weather Condition	Overcast
Wind Speed (mph)	6.9
Humidity (%)	64



Precipitation (mm)	0
--------------------	---

### Details for Site

Way Point Prefix	Hackensack
Way Point Number	3.3
Time at Way Point	10:24
Way Point Description	Manhole, Buried Cable at this location.
Are there visible signs indicating a cable crossing?	No
Are there buried or visible cable(s) at location?	Yes
How many cables are visible?	Buried Cable at this location.
Is lead visible?	No
Was there a general sample collected?	No

### Specific Cable Information

General Site Notes	Meadowlands Area. Largely overgrown and abandoned. This MH is the same referenced in Hackensack 3.2 near the Bell Utility Building. Buried cable at this location.
--------------------	--

Site Photos

