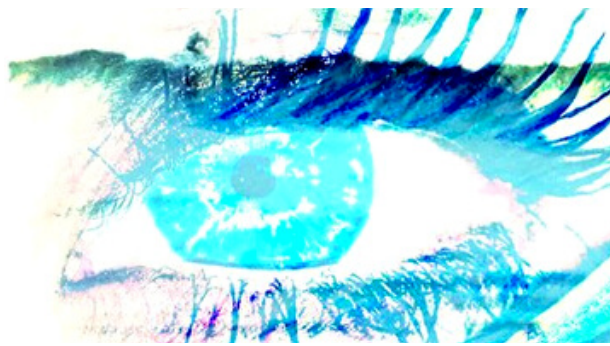


Welcome to....



LEIGHTON LASHES

Classic Eyelash Extensions

Before your appointment:

Please come with clean eyelashes, free of eye makeup, mascara and contact lenses removed.

Please don't consume coffee before your appointment as caffeine can effect your eye movements making it harder to position the eyelashes perfectly.

If you would like to listen to a podcast please feel free to bring your AirPods/headphones.

After your appointment:

Keep your eyelashes dry and avoid steam and sweat for the first 24 hours (including showers, baths, steam rooms and saunas).

Do not use mascara or oil based products on your eyelash extensions.


Brush eyelashes twice daily (an eyelash brush will be provided at all your appointments).

Wash your eyelash extensions with water daily and at least 4 times a week with gentle foaming cleanser.

Do not rub, pick or pull at your eyelash extensions.

Refill appointments should be booked within 3 weeks of your initial appointment.

106B STIRLING HIGHWAY, NORTH FREMANTLE 6159

 Kate 0406 827 224

 leighton.lashes

 leighton.lashes@outlook.com.au

 www.leightonlashes.com.au