



I Dream of Safaris

In Search of Giza

A Bespoke Safari Composition · Kenya · September 2026

Nairobi · Masai Mara · Laikipia · Samburu

In the company of Mr Nigel Marven

Wildlife Expert · Naturalist · Conservation Storyteller

Prepared by

Nehal Ahmed

Proprietor & Curator of Bespoke Safaris · I Dream of Safaris



Executive Summary

This is a journey composed around a single, rare creature: Giza, the melanistic leopard of the Laikipia Plateau.

Eleven days. Ten nights. Kenya at its most extraordinary — three landscapes as distinct as any on the continent: the great plains of the Masai Mara, the high wilderness of Laikipia, and the ochre riverine country of Samburu — threaded together so that the time in Giza’s territory sits at the very heart of the experience, not at its edges.

It is with great pleasure that Mr Nigel Marven — internationally recognised British wildlife television presenter, naturalist and conservation storyteller — will accompany guests throughout this journey. Alongside the expert local guides at each camp, his presence lends the safari a quality of insight and companionship that no itinerary alone can confer.

The Journey at a Glance

Duration:	Eleven days · ten nights Nairobi to Nairobi
Dates:	7-17 September 2026
Destination:	Kenya — Nairobi · Masai Mara · Laikipia · Samburu
The centre:	Giza — the melanistic leopard of Laikipia · Palm Camp, exclusively yours
With you:	Mr Nigel Marven — Wildlife Expert, Naturalist & Conservation Storyteller
Party:	Maximum four guests, accompanied by Mr Nigel Marven · twin-sharing at EnkaKenya Camp and Ashnil Samburu Camp
Investment:	USD 9,589 per person (twin-sharing) · ~USD 959 per person per night



Your Wildlife Expert



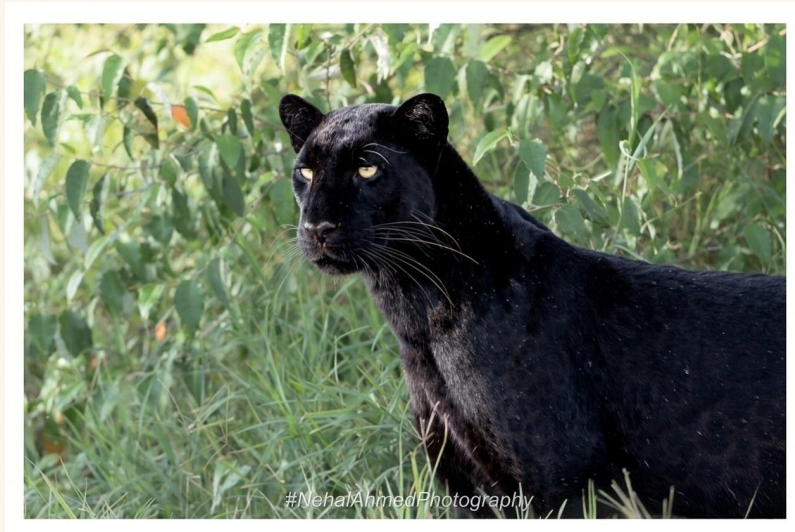
Mr Nigel Marven

Mr Nigel Marven is an internationally recognised British wildlife television presenter, naturalist and conservation storyteller, admired for bringing the wonder of the natural world to audiences across the globe. With a career spanning more than three decades, his work has taken him from the great wildernesses of Africa to some of the planet's most remote and remarkable habitats, where his knowledge, warmth and unmistakable presence have helped make wildlife both accessible and unforgettable.

To travel in Nigel's company is not simply to travel with a celebrated name. It is to move through a landscape with someone for whom the wild is not a backdrop but a living narrative — one he has spent a lifetime reading, presenting and protecting. The expert local guides and trackers at each camp will lead every drive and walk; Nigel brings a wider dimension — the perspective of a naturalist who has encountered this world across continents, and the gift of making each sighting feel both intimate and extraordinary.



Giza – The Melanistic Leopard of Laikipia



Giza, the melanistic leopard of the Laikipia Plateau · Photograph by Nehal Ahmed

There are journeys one assembles, and there are those one composes. This is the latter.

At the still point around which every element of this safari has been quietly arranged is Giza: a melanistic leopard of the Laikipia Plateau, and one of the most extraordinary wild animals in East Africa. Melanistic leopards — known colloquially, if imprecisely, as black leopards — are among the rarest sightings on the continent. What distinguishes Giza is not only her exceptional rarity but the intimacy with which she is known. The guides at Palm Camp have spent years in her territory; they understand her movements, her rhythms and her ground with a depth of familiarity that is, in the context of modern safari travel, without parallel.

Three nights at Palm Camp, with the conservancy held exclusively for your party, create the conditions under which a true encounter becomes possible. Not a sighting hoped for in passing, but an experience composed around her. September is the right season. This is the right camp. And with patience, craft, and a measure of good fortune, the hours spent in her presence will be among the most remarkable of any safari your guests have known.



The Journey

Date	Destination	Nights	Camp / Property
7 September	Nairobi	1 night	Emara Ole Sereni
8-12 September	Masai Mara	4 nights	EnkaKenya Camp · Olare Orok
12-15 September	Laikipia	3 nights	Palm Camp (exclusive-use)
15-17 September	Samburu	2 nights	Ashnil Samburu Camp
17 September	Nairobi	Departure	Road transfer to JKIA

The journey unfolds across four distinct landscapes, moving from the open plains of the Masai Mara to the high conservancy country of Laikipia — Giza’s territory, and the still centre of everything — before descending into the spare, sun-burned beauty of the Samburu National Reserve. All investment figures are stated on a twin-sharing basis in EnkaKenya Camp at Masai Mara and Ashnil Samburu Camp only.



Day by Day

7 September 2026

Nairobi — Arrival

You are met on arrival and settled for the night at Emara Ole Sereni — a well-appointed hotel on the city's southern edge, positioned for an unhurried start the following morning. One night, on a bed-and-breakfast basis. The wild begins tomorrow.

8 September 2026

Nairobi to the Masai Mara — By Road

Departure from Nairobi is early — before the city has fully stirred. Your private, chauffeured vehicle collects the party from Emara Ole Sereni and heads south-west towards the Rift Valley, one of the great geological and visual spectacles in Africa. The drive to EnkaKenya Camp covers approximately 260 kilometres and takes around six to seven hours, including a comfortable mid-morning stop.

This is not simply a transfer; it is the first act of the journey. The road descends through the escarpment at Narok, where the land opens and the sky widens in a manner that is immediately, unmistakably African. Masai bomas appear in the middle distance. Giraffe are often seen from the road as you approach the reserve. Zebra move in quiet herds through the golden grass. By the time you arrive at EnkaKenya, the Mara will already be in your blood.



Young male lions in the long grass of the Masai Mara · Photograph by Nehal Ahmed



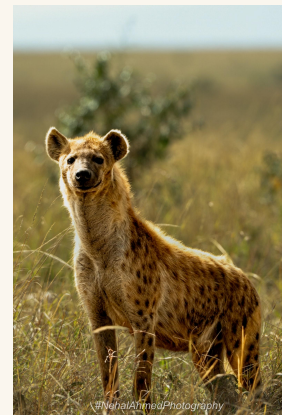
8-12 September 2026

The Masai Mara — EnkaKenya Camp · Four Nights

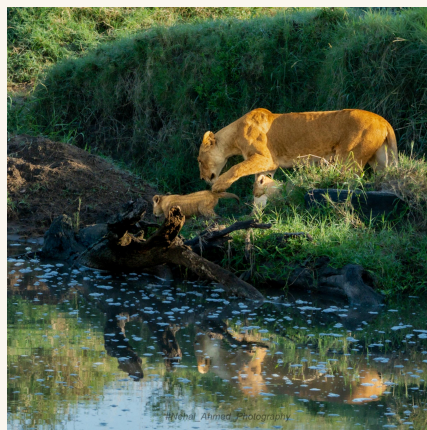
EnkaKenya Camp stands on the bank of the Olare Orok, deep within one of the most celebrated wildlife reserves on earth — eco-conscious in character, entirely of its landscape, and deliberately held apart from the more trafficked reaches of the Mara. Days are shaped by two game drives in a private Land Cruiser, with the option of a full day in the field when the country calls for it. The camp's expert guides read this ground as a first language, and Mr Nigel Marven is with you throughout.

September brings the closing movement of the Great Migration — wildebeest and zebra pressing northward in their ancient, inexorable tide, crossing and re-crossing the Mara River under skies that belong to no other time of year.

EnkaKenya holds three guest tents for this safari, one occupied by Mr Nigel Marven. The remaining two tents are offered on a twin-sharing basis with either a separate bed configuration or as a queen-sized bed suitable for couples — an intimacy that is part of what keeps this camp unspoilt.



Left: Lioness and cubs at the Olare Orok River · Right: Sunset over the Masai Mara · Photographs by Nehal Ahmed



Spotted hyena alert on the Mara plain · Photograph by Nehal Ahmed



12 September 2026

To Laikipia

A flight north to Nanyuki. A transfer through the conservancy country of the plateau. By evening, you are at Palm Camp.



Giza — the melanistic leopard of the Laikipia Plateau · Photograph by Nehal Ahmed

12-15 September 2026

Laikipia — Palm Camp · Three Nights · Exclusive-Use

Palm Camp accommodates only one party at a time. For these three nights, it is entirely yours: the firelight, the silence, and the surrounding country belong to you and your guests alone. All four guests are accommodated in separate en-suite tents (unless travelling as a couple), with complete privacy.

The programme is full board, inclusive of spirits, wines, beer and soft drinks. Six game drives — morning and afternoon, in a private vehicle with Palm Camp's specialist guide and tracker — carry you across the conservancy. In their company, and with Mr Nigel Marven alongside, the prospect of a true and unhurried encounter with Giza becomes not merely possible, but the quiet purpose of every hour in the field.



15 September 2026

Onwards to Samburu

A road transfer descends from the plateau into the drier, more ancient country of the north: the Samburu National Reserve, where the Ewaso Ng'iro cuts a green line through the red earth.

15-17 September 2026

Samburu — Ashnil Samburu Camp · Two Nights



A family of elephants moves through the red-earth country of Samburu · Photograph by Nehal Ahmed

Samburu is unlike anywhere else on the safari circuit. Its endemic species — the reticulated giraffe, the long-necked gerenuk, Grévy's zebra, the Beisa oryx — exist in no other ecosystem, and the landscape that holds them is one of spare, otherworldly beauty. Four game drives, in a private vehicle with a dedicated local expert guide and tracker, carry you through this country in the manner it deserves.

Set on the bank of the Ewaso Ng'iro, Ashnil Samburu Camp is a well-appointed property in an exceptional position: the river as constant companion, the reserve as an open stage beyond. It provides a comfortable, elegantly managed base from which to absorb Samburu's extraordinary cast of northern species.

As with EnkaKenya Camp, Ashnil Samburu holds three guest tents, one reserved for Mr Nigel Marven. The remaining two tents are offered on a twin-sharing basis with either a separate bed configuration or as a queen-sized bed suitable for couples.



17 September 2026

Homeward — Samburu to Nairobi by Road

Departure is early — while the light is still thin and the reserve holds its breath. Your private, chauffeured vehicle departs Ashnil Samburu Camp before sunrise, making the most of the cool morning hours on the road south towards Nairobi.

The drive covers approximately 340 kilometres and takes around six to seven hours at an unhurried pace. The road passes through the semi-arid landscapes of Laikipia and the Nanyuki corridor, where elephant and giraffe are frequently seen in the early hours, and the great profiles of Mount Kenya and the Aberdares emerge from the clouds on clear mornings. A comfortable stop is made en route. You will arrive in Nairobi with ample time for onward connections from Jomo Kenyatta International Airport.

It is a fitting close: the land unrolling slowly before you, the journey absorbed at the pace it deserves, the wild not left behind at an airstrip but carried home along the open road.

Investment

All figures are stated on a twin-sharing basis, for a maximum of four guests accompanied by Mr Nigel Marven across Kenya. EnkaKenya Camp and Ashnil Samburu Camp each hold three guest tents, with one reserved for Mr Nigel Marven. Guests twin-share at both properties. In Nairobi and at Palm Camp in Laikipia, all four guests are accommodated in entirely separate en-suite rooms (unless they are a couple).

Investment per person (twin-sharing)	USD 9,589
Approximate investment per person, per night	USD 959

These figures are offered without margin or fee for I Dream of Safaris. The journey has been brought to the finest standard at the truest possible cost.

Accommodation is on a full-board basis throughout. Rates include park and conservancy fees, all scheduled camp activities, and road transfers in place of internal charter flights. International airfares are not included.



What Your Journey Includes

- All airport welcomes and farewells, on arrival and departure
- One night in Nairobi, on a bed-and-breakfast basis
- All accommodation throughout the Masai Mara, Laikipia and Samburu, on a twin-sharing basis as indicated
- All meals throughout the safari
- Expert local guides and trackers for all game drives and activities at each camp
- The company of Mr Nigel Marven — wildlife expert and naturalist — throughout the full journey
- A dedicated private 4x4 Land Cruiser for your party, open-roofed
- Unlimited game-drive mileage
- Park and conservancy fees for the Masai Mara, Loisaba Conservancy and Samburu National Reserve
- Full board at Palm Camp, Laikipia, inclusive of spirits, wines, beer and soft drinks
- Unlimited mineral water throughout the journey
- Chauffeured road transfers: Nairobi to the Masai Mara on 8th September, and Samburu to Nairobi on 17th September
- Round-the-clock support for the full duration of the safari
- All applicable taxes

Not Included in the Arrangement

- International airfares
- International travel insurance
- Optional experiences — a hot-air balloon safari over the Masai Mara
- Gratuities and personal expenses
- Laundry
- Alcoholic and soft drinks, except where noted above
- Visas



*It would be the greatest of privileges to compose this journey for you —
and to place those quiet hours in Giza's company within your reach.*

Nehal Ahmed

Proprietor & Curator of Bespoke Safaris

I Dream of Safaris Pte Ltd

WhatsApp: +880 1711 083 444

instagram.com/idreamofsafaris

linkedin.com/in/nehalahmed

Nehal Ahmed is the founder and curator of I Dream of Safaris, a bespoke safari venture shaped by a deep love for wild places, thoughtful travel, and the quiet drama of the natural world. Drawing on a strong visual sensibility as a wildlife photographer and storyteller, he curates journeys that are personal, well-considered, and rooted in genuine experience of the bush. Through I Dream of Safaris, Nehal brings together wilderness, elegance, and authenticity to create safari experiences that are as meaningful as they are memorable.

