



lauxes
GRATES

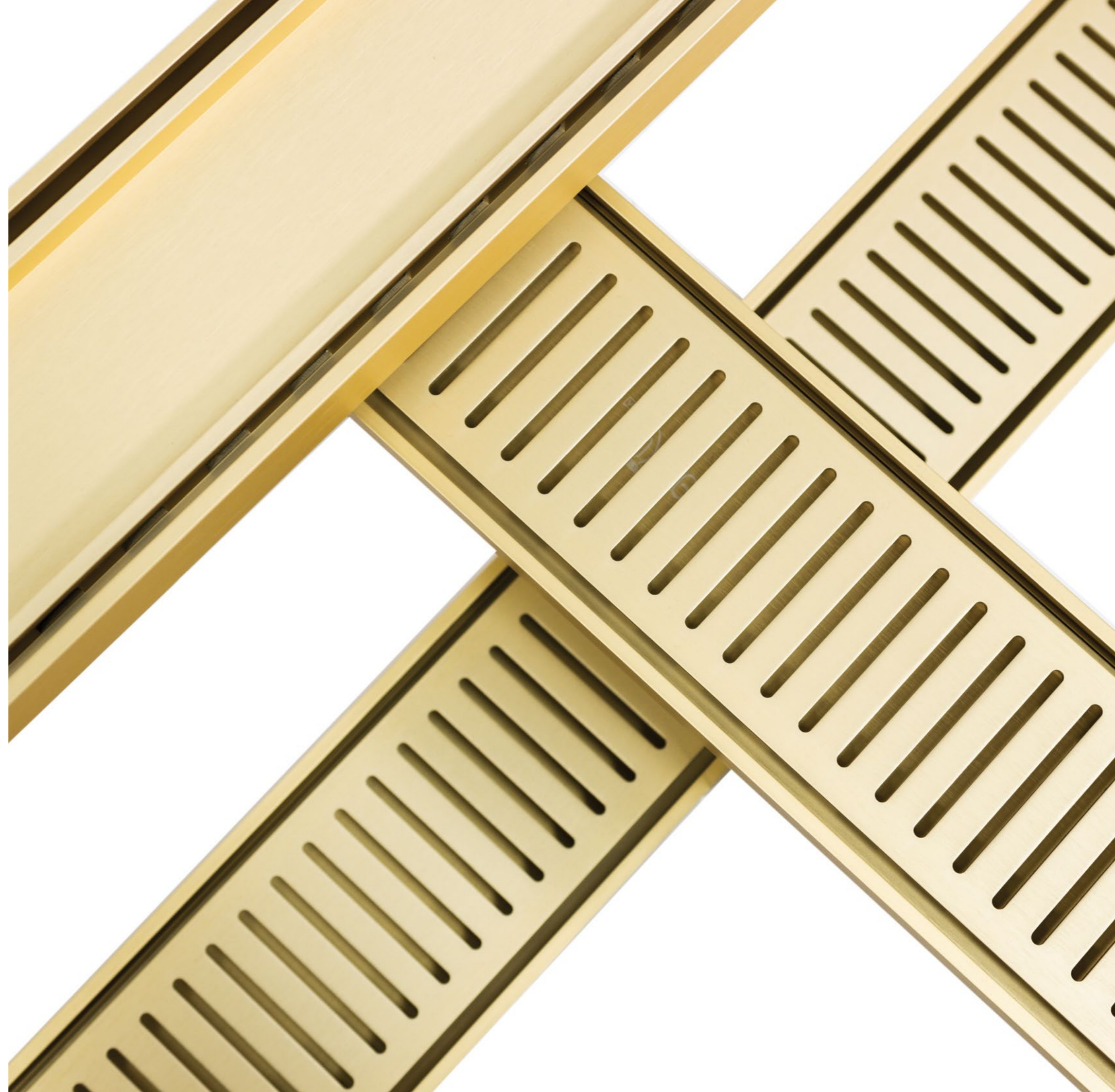
For **GRATE** peace of mind

Product Catalogue

www.lauxesgrates.com.au

CONTENTS

| | |
|-------------------------|----|
| ABOUT | 4 |
| MATERIALS | 6 |
| APPLICATIONS | 7 |
| NEXT GENERATION GRATES | 10 |
| NEXT GENERATION 14 | 12 |
| NEXT GENERATION 21 | 14 |
| NEXT GENERATION 26 | 16 |
| NEXT GENERATION 35 | 18 |
| COMMERCIAL PROJECTS | 20 |
| RESIDENTIAL PROJECTS | 21 |
| TILE INSERT GRATES | 24 |
| SLIMLINE TILE INSERT 21 | 26 |
| SLIMLINE TILE INSERT | 28 |
| TILE INSERT PLUS | 30 |
| STANDARD FLOOR GRATES | 32 |
| STANDARD FLOOR GRATE | 34 |
| STORM WATER GRATES | 38 |
| ACCESSORIES | 42 |
| END CAPS | 43 |
| 90 JOINERS | 44 |
| 180 JOINERS | 45 |
| WASTE OUTLETS | 46 |
| HOLE SAWS | 47 |
| SUMMARY | 48 |





ABOUT

Lauxes Grates is one of Australia and New Zealand's most exclusive designers and manufacturers of versatile linear drainage solutions.

As industry leaders, Lauxes Grates services approx. 1600+ distributors via our warehouses in Queensland, Victoria, Western Australia and soon to be New South Wales.

With over 20 years of combined trade experience, our developers have created innovative anodized aluminium grates that are suitable for all indoor and outdoor areas.

Offering on-site customisation, our grates offer a quick installation, seamlessly blending with all property types.

Waterproof and corrosion free, all Lauxes grates come with a lifetime rustproof guarantee, giving you grate peace of mind.

Our creativity, industry knowledge and constant innovation keeps us at the forefront of the tiling and plumbing industry.

From high traffic outdoor spaces to indoor bathrooms, Lauxes Grates are a popular choice for builders, architects, tilers, plumbers and homeowners alike.

Meeting all specifications and regulations, our products are certified under the Australian WaterMark Scheme (WMTS 040-2021).



WHAT SETS US APART FROM ALL THE OTHERS?

Here at Lauxes Grates we live and breathe our four core values; We Don't Do Boring, We Make Shit Happen, We Stay Hungry and, We Speak POFL (positive outcome focused language).

Together we know we can achieve grateness! Culture is key as we are always thinking of new and innovative ideas, striving to improve processes and introduce new products, whilst constantly evolving and responding to change.

Our team of industry professionals are happy to help you every step of the way. Whether you need help in choosing the most suitable linear floor grate for your project or guidance regarding the installation of a grate... we've got you covered. We are committed to changing the world one grate at a time and we won't stop until we get there!



- ✓ ALL GRATES COME WITH A LIFETIME RUSTPROOF WARRANTY
- ✓ AVAILABLE IN MULTIPLE WIDTHS AND DEPTHS
- ✓ CERTIFIED UNDER THE WATERMARK CERTIFICATION SCHEME
- ✓ EASILY CUSTOMISABLE ON SITE WITHOUT LENGTHY DELAYS
- ✓ AVAILABLE IN MULTIPLE COLOURS
- ✓ UV STABLE - 25 YEAR WARRANTY AGAINST FADING

With over twenty years of combined trade experience, our developers have created innovative anodised aluminium grates that are suitable for all indoor and outdoor areas

What is Anodising?

Anodising is an electrolytic passivation process where the porous on the surface of metals are coated to an oxide layer. This process increases the thickness of the natural oxide layer, making the metals resistant to corrosion and abrasion.

Why Anodise Aluminium?

Anodising the aluminium makes the metal stronger and more durable, by adding an oxide layer that is almost as strong as diamond. The oxide on aluminium is naturally corrosion resistant, making it a very hard, abrasive resistant and an insulator.

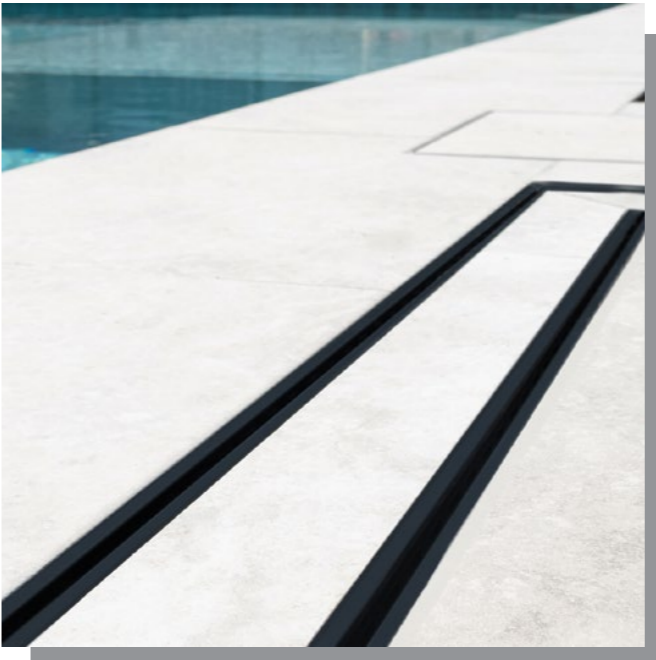
In terms of aesthetic, the anodising process adds a coloured anodic film that will retain and enhance the aluminium inherent beauty. These aesthetics and durability features make anodised aluminium the ideal material for residential, commercial and industrial projects.

Cleaning

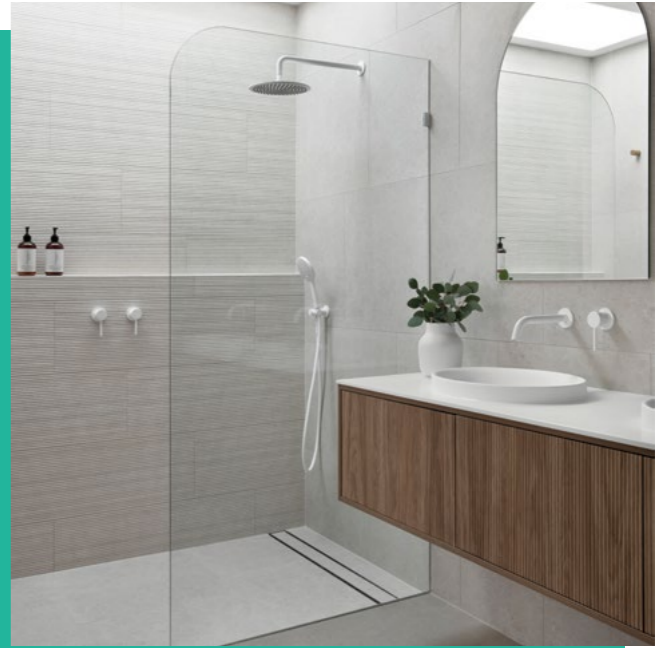
Linear floor grates are easier to maintain than regular grates. Soapy water is our recommended method of cleaning a Lauxes grate. Mild detergents can be used to wipe and remove any matter or debris caught in the drainage area. Use a nylon cleaning pad or brush to run over the surface, rinse with warm water and dry with a clean cloth. Do not use abrasive or harsh chemicals such as acidic products on the grates. Also, do not use excessive force to remove any stubborn marks.

APPLICATIONS

SWIMMING POOLS



BATHROOMS



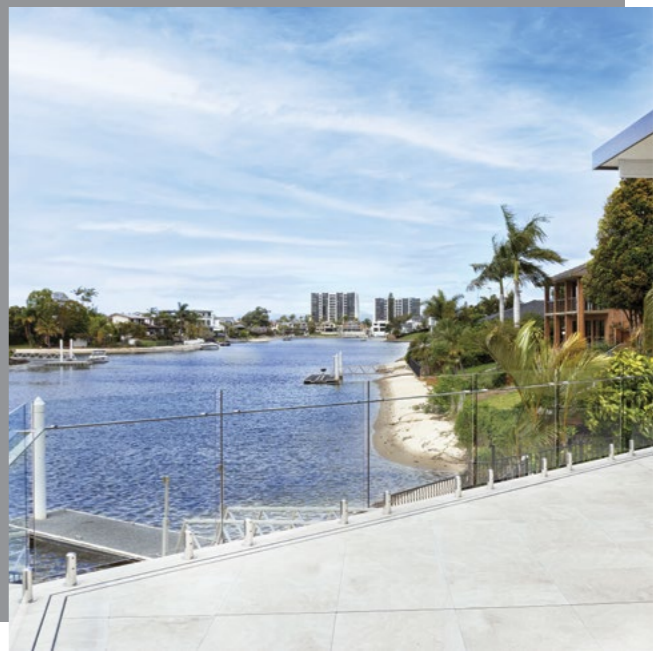
MATERIALS



SLIMLINE TILE INSERT



DRIVEWAYS



BALCONIES



NEXT GENERATION GRATES

PRODUCT FEATURES

- COMES IN MULTIPLE LENGTHS AND COLOURS
- EASILY CUSTOMISABLE ON SITE
- 3 DIFFERENT DEPTHS
- ANTI-WATER TRACKING
- HEEL PROOF
- 25 YEAR WARRANTY AGAINST FADING
- LIFETIME RUSTPROOF WARRANTY
- EASY ROLL-OUT FEATURE FOR CLEANING AND MAINTENANCE

NEXT GENERATION 14

PRODUCT SPECIFICATIONS

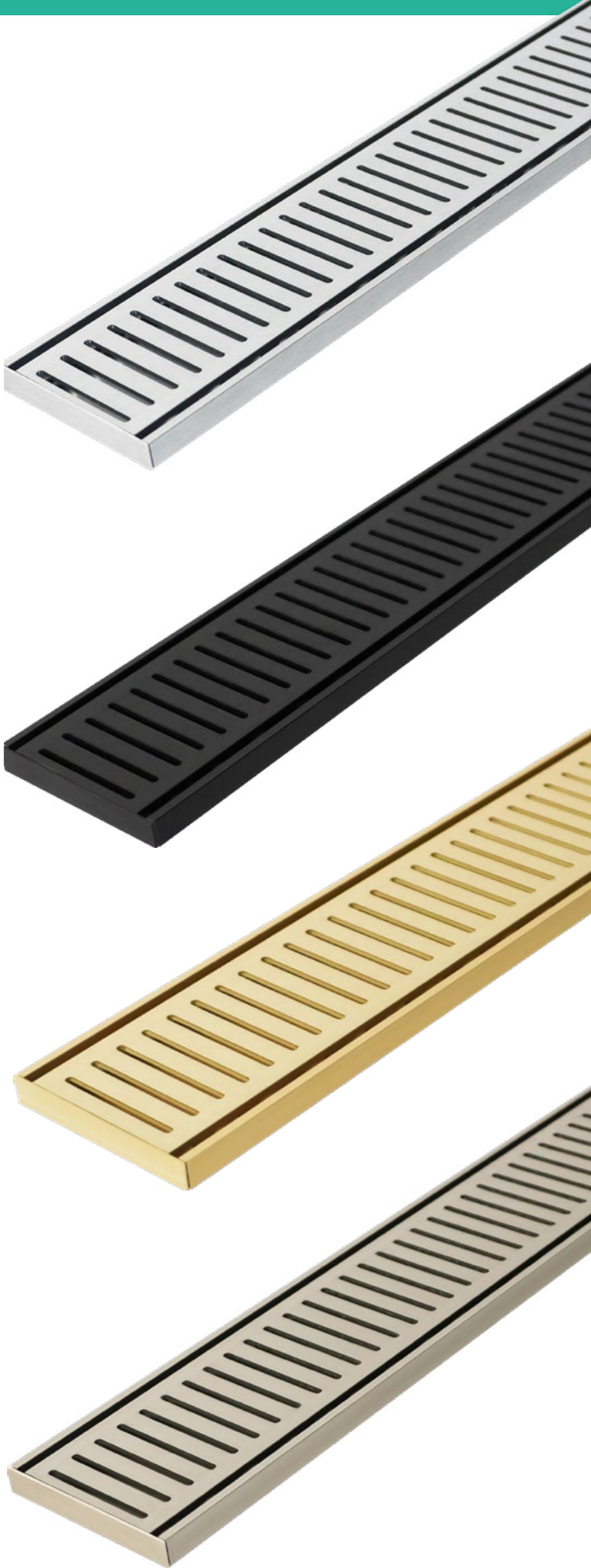
| | |
|--------------|---|
| FULL LENGTH | 3000MM or 5600MM |
| DEPTH | 14MM |
| WIDTH | 100MM |
| COLOUR | SILK SILVER, MIDNIGHT BLACK, GOLD, BRUSHED NICKEL |
| MATERIAL | ANODISED ALUMINIUM |
| APPLICATIONS | INDOOR/OUTDOOR |

SILVER NEXT
GENERATION 14
NXT14-S-3 | NXT14-S-5.6

MIDNIGHT NEXT
GENERATION 14
NXT14-M-3 | NXT14-M-5.6

GOLD NEXT
GENERATION 14
NXT14-G-3 | NXT14-G-5.6

BRUSHED NICKEL NEXT
GENERATION 14
NXT14-BN-3 | NXT14-BN-5.6



NEXT GENERATION 21

PRODUCT SPECIFICATIONS

| | |
|--------------|---|
| FULL LENGTH | 3000MM or 5600MM |
| DEPTH | 21MM |
| WIDTH | 100MM |
| COLOUR | SILK SILVER, MIDNIGHT BLACK, GOLD, BRUSHED NICKEL |
| MATERIAL | ANODISED ALUMINIUM |
| APPLICATIONS | INDOOR/OUTDOOR |

SILVER NEXT
GENERATION 21
NXT21-S-3 | NXT21-S-5.6

MIDNIGHT NEXT
GENERATION 21
NXT21-M-3 | NXT21-M-5.6

GOLD NEXT
GENERATION 21
NXT21-G-3 | NXT21-G-5.6

BRUSHED NICKEL NEXT
GENERATION 21
NXT21-BN-3 | NXT21-BN-5.6



NEXT GENERATION 26

PRODUCT SPECIFICATIONS

| | |
|--------------|---|
| FULL LENGTH | 5600MM |
| DEPTH | 26MM |
| WIDTH | 100MM |
| COLOUR | SILK SILVER, MIDNIGHT BLACK, GOLD, BRUSHED NICKEL |
| MATERIAL | ANODISED ALUMINIUM |
| APPLICATIONS | INDOOR/OUTDOOR |

SILVER NEXT
GENERATION 26
NXT26-S-5.6

MIDNIGHT NEXT
GENERATION 26
NXT26-M-5.6

GOLD NEXT
GENERATION 26
NXT26-G-5.6

BRUSHED NICKEL NEXT
GENERATION 26
NXT26-BN-5.6



NEXT GENERATION 35

PRODUCT SPECIFICATIONS

| | |
|--------------|-----------------------------|
| FULL LENGTH | 5600MM |
| DEPTH | 35MM |
| WIDTH | 100MM |
| COLOUR | SILK SILVER, MIDNIGHT BLACK |
| MATERIAL | ANODISED ALUMINIUM |
| APPLICATIONS | INDOOR/OUTDOOR |

SILVER NEXT
GENERATION 35
NXT35-S-5.6



MIDNIGHT NEXT
GENERATION 35
NXT35-M-5.6







STORM WATER GRATES



STANDARD FLOOR GRATES



TILE INSERT GRATES



NEXT GENERATION GRATES

TILE INSERT GRATES

CORAL HOUSE BY ZEPHYR AND STONE

SLIMLINE TILE INSERT

PRODUCT FEATURES

- COMES IN MULTIPLE LENGTHS AND SIZES
- ACCOMMODATES DIFFERENT TILE SIZES
- EASILY CUSTOMISABLE ON SITE
- ANTI-WATER TRACKING
- 25 YEAR WARRANTY AGAINST FADING
- LIFETIME RUSTPROOF WARRANTY
- MODERN AND STYLISH DESIGN
- EASY ROLL-OUT FEATURE FOR CLEANING AND MAINTENANCE

SLIMLINE TILE INSERT 21

PRODUCT SPECIFICATIONS

| | |
|--------------|---|
| FULL LENGTH | 3000MM OR 5600MM |
| DEPTH | 21MM |
| WIDTH | 100MM |
| COLOUR | SILK SILVER, MIDNIGHT BLACK, GOLD, BRUSHED NICKEL |
| MATERIAL | ANODISED ALUMINIUM |
| APPLICATIONS | INDOOR/OUTDOOR |
| TILE | UP TO 10MM THICK |

SILVER SLIMLINE
TILE INSERT 21
STI21-S-3 | STI21-S-5.6

MIDNIGHT SLIMLINE
TILE INSERT 21
STI21-M-3 | STI21-M-5.6

GOLD SLIMLINE
TILE INSERT 21
STI21-G-3 | STI21-G-5.6

BRUSHED NICKEL SLIMLINE
TILE INSERT 21
STI21-BN-3 | STI21-BN-5.6



SLIMLINE TILE INSERT

PRODUCT SPECIFICATIONS

| | |
|--------------|---|
| FULL LENGTH | 5600MM |
| DEPTH | 26MM |
| WIDTH | 100MM |
| COLOUR | SILK SILVER, MIDNIGHT BLACK, GOLD, BRUSHED NICKEL |
| MATERIAL | ANODISED ALUMINIUM |
| APPLICATIONS | INDOOR/OUTDOOR |
| TILE | UP TO 11MM THICK |

SILVER SLIMLINE
TILE INSERT
STI26-S-5.6

MIDNIGHT SLIMLINE
TILE INSERT
STI26-M-5.6

GOLD
SLIMLINE TILE INSERT
STI26-G-5.6

BRUSHED NICKEL SLIMLINE
TILE INSERT
STI26-BN-5.6



TILE INSERT PLUS

PRODUCT SPECIFICATIONS

| | |
|--------------|-----------------------------|
| FULL LENGTH | 5600MM |
| DEPTH | 35MM |
| WIDTH | 100MM |
| COLOUR | SILK SILVER, MIDNIGHT BLACK |
| MATERIAL | ANODISED ALUMINIUM |
| APPLICATIONS | INDOOR/OUTDOOR |
| TILE | UP TO 20MM THICK |

SILVER TILE INSERT PLUS
TIP35-S-5.6



MIDNIGHT TILE INSERT PLUS
TIP35-M-5.6



STANDARD FLOOR GRATES

PRODUCT FEATURES

- EASILY CUSTOMISABLE ON SITE
- HEEL PROOF
- 25 YEAR WARRANTY AGAINST FADING
- LIFETIME RUSTPROOF WARRANTY
- MODERN AND STYLISH DESIGN
- COMES IN 2 COLOURS

STANDARD FLOOR GRATE

PRODUCT SPECIFICATIONS

| | |
|--------------|-----------------------------|
| FULL LENGTH | 5600MM |
| DEPTH | 23MM |
| WIDTH | 70MM |
| COLOUR | SILK SILVER, MIDNIGHT BLACK |
| MATERIAL | ANODISED ALUMINIUM |
| APPLICATIONS | INDOOR/OUTDOOR |

SILVER STANDARD FLOOR GRATE
SFG23-S-5.6



MIDNIGHT STANDARD FLOOR GRATE
SFG23-M-5.6



STORM WATER GRATES

PRODUCT FEATURES

- STYLISH REPLACEMENT TOP FOR EXISTING STORM WATER GRATE
- EASILY CUSTOMISABLE ON SITE
- COMES IN 2 STYLES
- HEEL PROOF
- 25 YEAR WARRANTY AGAINST FADING
- LIFETIME RUSTPROOF WARRANTY
- ENGINEERED TO WITHSTAND HEAVY LOADS
- PERFECT FOR DRIVEWAYS AND ALFRESCO AREAS
- EASY TO REPLACE / DIY

STORM WATER GRATES

PRODUCT SPECIFICATIONS

| | |
|--------------|-----------------------------|
| FULL LENGTH | 3000MM |
| DEPTH | 19MM TOP ONLY |
| WIDTH | 128MM |
| COLOUR | SILK SILVER, MIDNIGHT BLACK |
| MATERIAL | ANODISED ALUMINIUM |
| APPLICATIONS | OUTDOOR |
| TILE INSERT | UP TO 13MM THICK |

128 STORM WATER
SILVER NEXT GENERATION
SW128-S-3

128 STORM WATER
MIDNIGHT NEXT GENERATION
SW128-M-3

128 STORM WATER
MIDNIGHT TILE INSERT
SWT128-M-3

*AVAILABLE IN MIDNIGHT BLACK ONLY







ACCESSORIES

ACCESSORIES

END CAPS

AVAILABLE IN



End Caps (pair)
14mm x 100mm
EC14-S-100
Silk Silver
Suitable for NXT14-S-3 |
NXT14-S-5.6

End Caps (pair)
14mm x 100mm
EC14-M-100
Midnight Black
Suitable for NXT14-M-3 |
NXT14-M-5.6

End Caps (pair)
14mm x 100mm
EC14-G-100
Gold
Suitable for NXT14-G-3 |
NXT14-G-5.6

End Caps (pair)
14mm x 100mm
EC14-BN-100
Brushed Nickel
Suitable for NXT14-BN-3 |
NXT14-BN-5.6

AVAILABLE IN



End Caps (pair)
21mm x 100mm
EC21-S-100
Silk Silver
Suitable for STI21-S-3 |
STI21-S-5.6 & NXT21-S-3 |
NXT21-S-5.6

End Caps (pair)
21mm x 100mm
EC21-M-100
Midnight Black
Suitable for STI21-M-3 |
STI21-M-5.6 & NXT21-M-3 |
NXT21-M-5.6

End Caps (pair)
21mm x 100mm
EC21-G-100
Gold
Suitable for STI21-G-3 |
STI21-G-5.6 & NXT21-G-3 |
NXT21-G-5.6

End Caps (pair)
21mm x 100mm
EC21-BN-100
Brushed Nickel
Suitable for STI21-BN-3 |
STI21-BN-5.6 & NXT21-BN-3 |
NXT21-BN-5.6

AVAILABLE IN



End Caps (pair)
23mm x 70mm
EC23-S-70
Silk Silver
Suitable for SFG23-S-5.6

End Caps (pair)
23mm x 70mm
EC23-M-70
Midnight Black
Suitable for SFG23-M-5.6

AVAILABLE IN



End Caps (pair)
26mm x 100mm
EC26-S-100
Silk Silver
Suitable for NXT26-S-5.6,
& STI26-S-5.6

End Caps (pair)
26mm x 100mm
EC26-M-100
Midnight Black
Suitable for NXT26-M-5.6
& STI26-M-5.6

End Caps (pair)
26mm x 100mm
EC26-G-100
Gold
Suitable for NXT26-G-5.6
& STI26-G-5.6

End Caps (pair)
26mm x 100mm
EC26-BN-100
Brushed Nickel
Suitable for NXT26-BN-5.6
& STI26-BN-5.6

AVAILABLE IN



End Caps (pair)
35mm x 100mm
EC35-S-100
Silk Silver
Suitable for NXT35-S-5.6 &
TIP35-S-5.6

End Caps (pair)
35mm x 100mm
EC35-M-100
Midnight Black
Suitable for NXT35-M-5.6 &
TIP35-M-5.6

90° JOINERS



AVAILABLE IN

| | | | |
|--|---|---|--|
| | | | |
| 90° Joiners (pair) J14-S-90 Silk Silver Suitable for NXT14-S-3 NXT14-S-5.6 | 90° Joiners (pair) J14-M-90 Midnight Black Suitable for NXT14-M-3 NXT14-M-5.6 | 90° Joiners (pair) J14-G-90 Gold Suitable for NXT14-G-3 NXT14-G-5.6 | 90° Joiners (pair) J14-BN-90 Brushed Nickel Suitable for NXT14-BN-3 NXT14-BN-5.6 |



AVAILABLE IN

| | | | |
|---|--|--|---|
| | | | |
| 90° Joiners (pair) J21-S-90 Silk Silver Suitable for STI21-S-3 STI21-S-5.6 & NXT21-S-3 NXT21-S-5.6 | 90° Joiners (pair) J21-M-90 Midnight Black Suitable for STI21-M-3 STI21-M-5.6 & NXT21-M-3 NXT21-M-5.6 | 90° Joiners (pair) J21-G-90 Gold Suitable for STI21-G-3 STI21-G-5.6 & NXT21-G-3 NXT21-G-5.6 | 90° Joiners (pair) J21-BN-90 Brushed Nickel Suitable for STI21-BN-3 STI21-BN-5.6 & NXT21-BN-3 NXT21-BN-5.6 |



AVAILABLE IN

| | |
|---|--|
| | |
| 90° Joiners (pair) J23-S-90 Silk Silver Suitable for SFG23-S-5.6 | 90° Joiners (pair) J23-M-90 Midnight Black Suitable for SFG23-M-5.6 |



AVAILABLE IN

| | | | |
|--|---|---|--|
| | | | |
| 90° Joiners (pair) J26-S-90 Silk Silver Suitable for NXT26-S-5.6 & STI26-S-5.6 | 90° Joiners (pair) J26-M-90 Midnight Black Suitable for NXT26-M-5.6 & STI26-M-5.6 | 90° Joiners (pair) J26-G-90 Gold Suitable for NXT26-G-5.6 & STI26-G-5.6 | 90° Joiners (pair) J26-BN-90 Brushed Nickel Suitable for NXT26-BN-5.6 & STI26-BN-5.6 |



AVAILABLE IN

| | |
|--|---|
| | |
| 90° Joiners (pair) J35-S-90 Silk Silver Suitable for TIP35-S-5.6 & NXT35-S-5.6 | 90° Joiners (pair) J35-M-90 Midnight Black Suitable for TIP35-M-5.6 & NXT35-M-5.6 |

180° JOINERS



AVAILABLE IN

| | | | |
|--|---|---|--|
| | | | |
| 180° Joiners (pair) J14-S-180 Silk Silver Suitable for NXT14-S-3 NXT14-S-5.6 | 180° Joiners (pair) J14-M-180 Midnight Black Suitable for NXT14-M-3 NXT14-M-5.6 | 180° Joiners (pair) J14-G-180 Gold Suitable for NXT14-G-3 NXT14-G-5.6 | 180° Joiners (pair) J14-BN-180 Brushed Nickel Suitable for NXT14-BN-3 NXT14-BN-5.6 |



AVAILABLE IN

| | | | |
|---|--|--|---|
| | | | |
| 180° Joiners (pair) J21-S-180 Silk Silver Suitable for STI21-S-3 STI21-S-5.6 & NXT21-S-3 NXT21-S-5.6 | 180° Joiners (pair) J21-M-180 Midnight Black Suitable for STI21-M-3 STI21-M-5.6 & NXT21-M-3 NXT21-M-5.6 | 180° Joiners (pair) J21-G-180 Gold Suitable for STI21-G-3 STI21-G-5.6 & NXT21-G-3 NXT21-G-5.6 | 180° Joiners (pair) J21-BN-180 Brushed Nickel Suitable for STI21-BN-3 STI21-BN-5.6 & NXT21-BN-3 NXT21-BN-5.6 |



AVAILABLE IN

| | |
|---|--|
| | |
| 180° Joiners (pair) J23-S-180 Silk Silver Suitable for SFG23-S-5.6 | 180° Joiners (pair) J23-M-180 Midnight Black Suitable for SFG23-M-5.6 |



AVAILABLE IN

| | | | |
|--|---|---|--|
| | | | |
| 180° Joiners (pair) J26-S-180 Silk Silver Suitable for NXT26-S-5.6 & STI26-S-5.6 | 180° Joiners (pair) J26-M-180 Midnight Black Suitable for NXT26-M-5.6 & STI26-M-5.6 | 180° Joiners (pair) J26-G-180 Gold Suitable for NXT26-G-5.6 & STI26-G-5.6 | 180° Joiners (pair) J26-BN-180 Brushed Nickel Suitable for NXT26-BN-5.6 & STI26-BN-5.6 |



AVAILABLE IN

| | |
|--|---|
| | |
| 180° Joiners (pair) J35-S-180 Silk Silver Suitable for TIP35-S-5.6 & NXT35-S-5.6 | 180° Joiners (pair) J35-M-180 Midnight Black Suitable for TIP35-M-5.6 & NXT35-M-5.6 |

WASTE OUTLETS

AVAILABLE IN



| | | | |
|-------------------------------|----------------------------------|------------------------|-----------------------------------|
| | | | |
| 40mm WO40-S Silk Silver | 40mm WO40-M Midnight Black | 40mm WO40-G Gold | 40mm WO40-BN Brushed Nickel |

AVAILABLE IN



| | | | |
|-------------------------------|----------------------------------|------------------------|-----------------------------------|
| | | | |
| 50mm WO50-S Silk Silver | 50mm WO50-M Midnight Black | 50mm WO50-G Gold | 50mm WO50-BN Brushed Nickel |

AVAILABLE IN



| | | | |
|-------------------------------|----------------------------------|------------------------|-----------------------------------|
| | | | |
| 72mm WO72-S Silk Silver | 72mm WO72-M Midnight Black | 72mm WO72-G Gold | 72mm WO72-BN Brushed Nickel |

AVAILABLE IN



| | | | |
|-------------------------------|----------------------------------|------------------------|-----------------------------------|
| | | | |
| 80mm WO80-S Silk Silver | 80mm WO80-M Midnight Black | 80mm WO80-G Gold | 80mm WO80-BN Brushed Nickel |

HOLE SAWS



Size: 40mm
Code: HS40

Suitable for 40mm waste outlet.

Complete assembly included - there is no requirement to purchase a separate arbor and pilot drill.



Size: 50mm
Code: HS50

Suitable for 50mm waste outlet.

Complete assembly included - there is no requirement to purchase a separate arbor and pilot drill.



Size: 72mm
Code: HS72

Suitable for 72mm waste outlet.

Complete assembly included - there is no requirement to purchase a separate arbor and pilot drill.

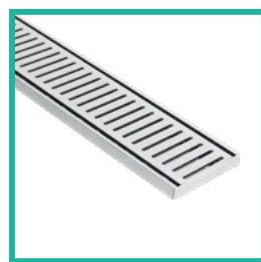


Size: 80mm
Code: HS80

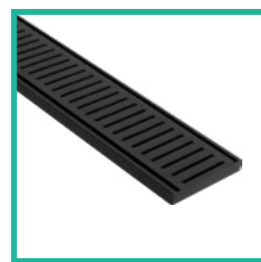
Suitable for 80mm waste outlet.

Complete assembly included - there is no requirement to purchase a separate arbor and pilot drill.

Our Product Range



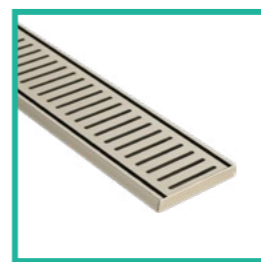
Silver
NeXT Generation 14
(NXT14-S-3 | NXT14-S-5.6)
100mm x 14mm x 3000mm
100mm x 14mm x 5600mm



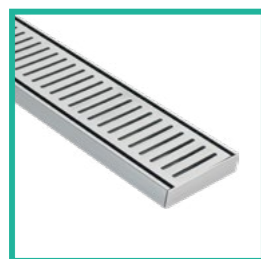
Midnight
NeXT Generation 14
(NXT14-M-3 | NXT14-M-5.6)
100mm x 14mm x 3000mm
100mm x 14mm x 5600mm



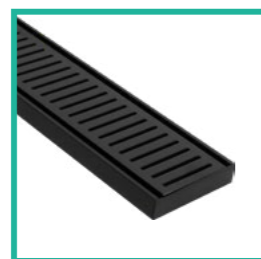
Gold
NeXT Generation 14
(NXT14-G-3 | NXT14-G-5.6)
100mm x 14mm x 3000mm
100mm x 14mm x 5600mm



Brushed Nickel
NeXT Generation 14
(NXT14-BN-3 | NXT14-BN-5.6)
100mm x 14mm x 3000mm
100mm x 14mm x 5600mm



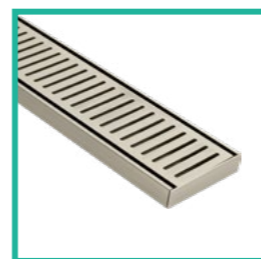
Silver
NeXT Generation 21
(NXT21-S-3 | NXT21-S-5.6)
100mm x 21mm x 3000mm
100mm x 21mm x 5600mm



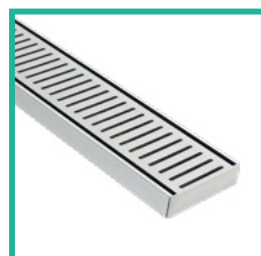
Midnight
NeXT Generation 21
(NXT21-M-3 | NXT21-M-5.6)
100mm x 21mm x 3000mm
100mm x 21mm x 5600mm



Gold
NeXT Generation 21
(NXT21-G-3 | NXT21-G-5.6)
100mm x 21mm x 3000mm
100mm x 21mm x 5600mm



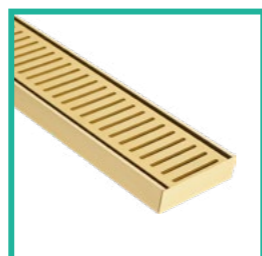
Brushed Nickel
NeXT Generation 21
(NXT14-BN-3 | NXT14-BN-5.6)
100mm x 21mm x 3000mm
100mm x 21mm x 5600mm



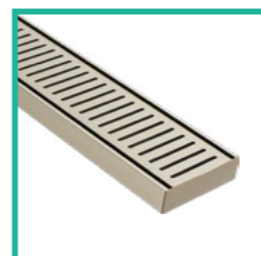
Silver
NeXT Generation 26
(NXT26-S-5.6)
100mm x 26mm x 5600mm



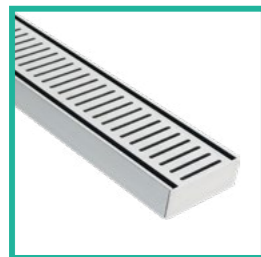
Midnight
NeXT Generation 26
(NXT26-M-5.6)
100mm x 26mm x 5600mm



Gold
NeXT Generation 26
(NXT26-G-5.6)
100mm x 26mm x 5600mm



Brushed Nickel
NeXT Generation 26
(NXT26-BN-5.6)
100mm x 26mm x 5600mm



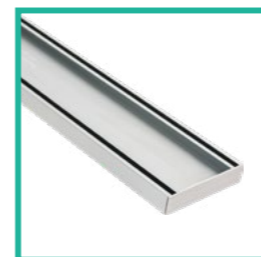
Silver
NeXT Generation 35
(NXT35-S-5.6)
100mm x 35mm x 5600mm



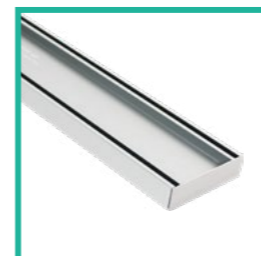
Midnight
NeXT Generation 35
(NXT35-M-5.6)
100mm x 35mm x 5600mm

Available in multiple depths and colours, this anti-water tracking, anodised aluminium grate is ideal for multiple applications. All of our grates are UV Stable and come with a 25 year warranty against fading. With a Lifetime Rustproof Warranty the NeXT Generation grates are an industry gamechanger.

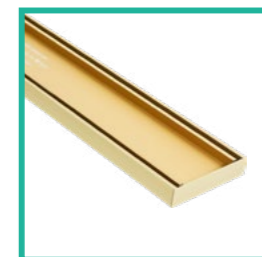
TILE INSERT GRATES



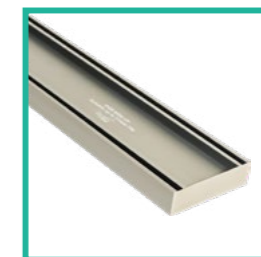
Silver
Slimline Tile Insert 21
(STI21-S-3 | STI21-S-5.6)
100mm x 21mm x 3000mm
100mm x 21mm x 5600mm



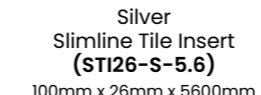
Midnight
Slimline Tile Insert 21
(STI21-M-3 | STI21-M-5.6)
100mm x 21mm x 3000mm
100mm x 21mm x 5600mm



Gold
Slimline Tile Insert 21
(STI21-G-3 | STI21-G-5.6)
100mm x 21mm x 3000mm
100mm x 21mm x 5600mm



Brushed Nickel
Slimline Tile Insert 21
(STI21-BN-3 | STI21-BN-5.6)
100mm x 21mm x 3000mm
100mm x 21mm x 5600mm



Silver
Slimline Tile Insert
(STI26-S-5.6)
100mm x 26mm x 5600mm



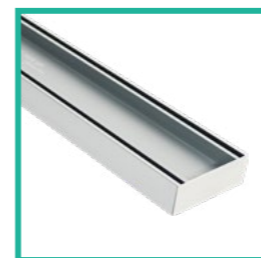
Midnight
Slimline Tile Insert
(STI26-M-5.6)
100mm x 26mm x 5600mm



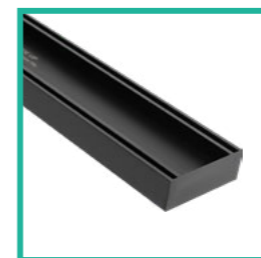
Gold
Slimline Tile Insert
(STI26-G-5.6)
100mm x 26mm x 5600mm



Brushed Nickel
Slimline Tile Insert
(STI26-BN-5.6)
100mm x 26mm x 5600mm



Silver
Tile Insert Plus
(TIP35-S-5.6)
100mm x 35mm x 5600mm



Midnight
Tile Insert Plus
(TIP35-M-5.6)
100mm x 35mm x 5600mm

Our most popular line of the Lauxes Grates collection, the tile insert range offers a range of depths to suit most applications and tiles. Backed by a Lifetime Rustproof Warranty and available in lengths up to 5.6m (extendable with joiners) these grates are ideal for both indoor/outdoor projects.

STORMWATER GRATES



128 Storm Water
Silver NeXT Generation
(SW128-S-3)
128mm x 19mm x 3000mm
TOP ONLY



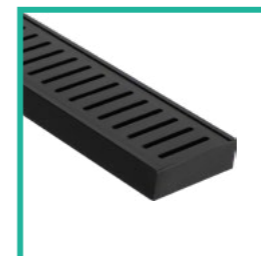
128 Storm Water
Midnight NeXT Generation
(SW128-M-3)
128mm x 19mm x 3000mm
TOP ONLY



128 Storm Water
Midnight Tile Insert
(SWT128-M-3)
128mm x 19mm x 3000mm
TOP ONLY



Silver
Standard Floor Grate
(SFG23-S-5.6)
70mm x 23mm x 5600mm



Midnight
Standard Floor Grate
(SFG23-M-5.6)
70mm x 23mm x 5600mm





For **GRATE** peace of mind

CONTACT

Phone:

1300 214 510

Email:

hello@lauxesproducts.com.au

Website:

www.lauxesgrates.com.au

Address:

Lauxes Grates
PO Box 23
Ashmore City
QLD 4214
Australia

FOR MORE INFO
VISIT

