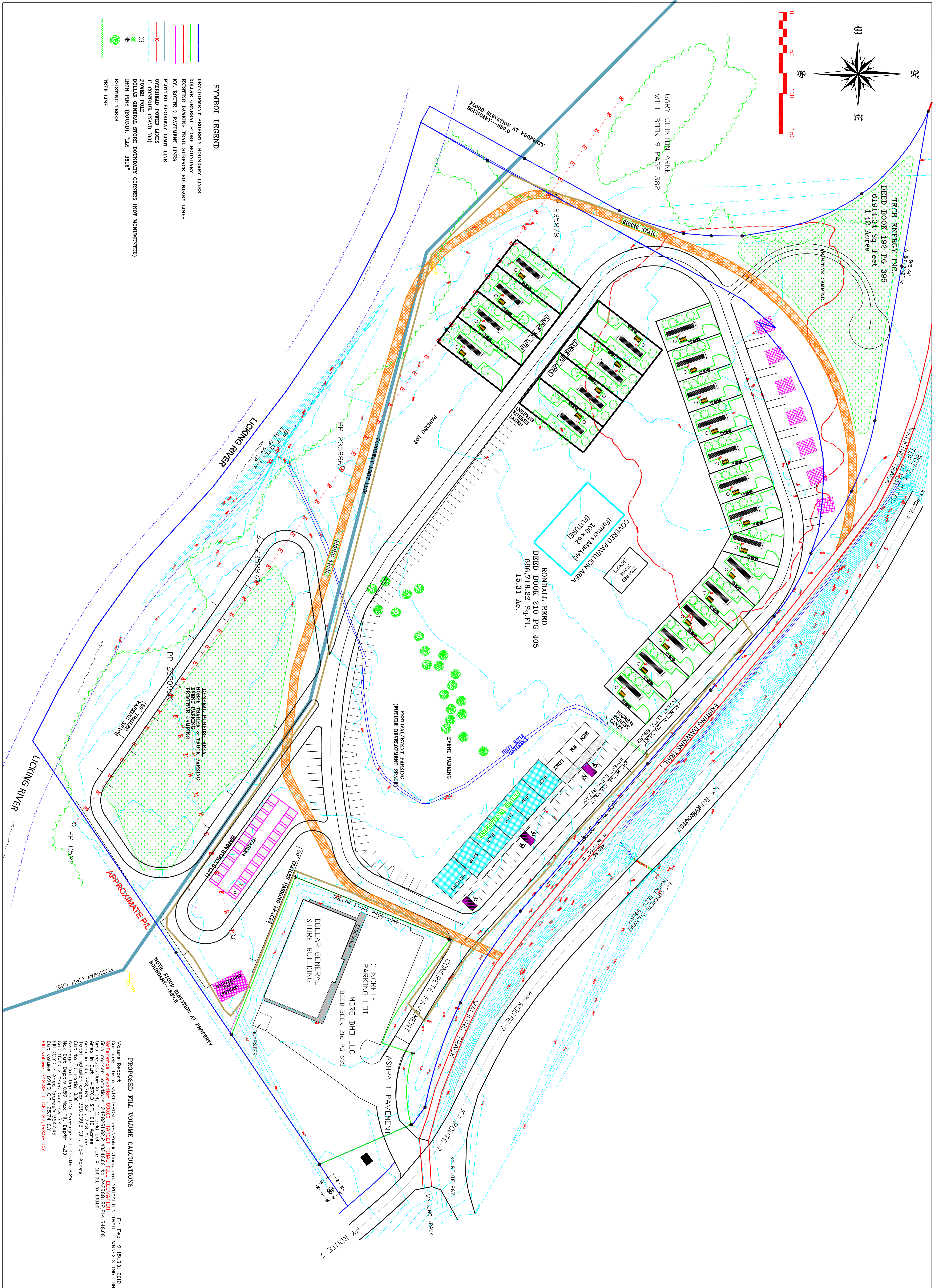


- SYMBOL LEGEND**
- Development Property Boundary Lines
 - Dollar General Store Boundary
 - Existing Damens Trail Surface Boundary Lines
 - KY Route 7 Pavement Lines
 - Plotted Floodway Limit Lines
 - Overhead Power Lines
 - 1" Contour (NAVD 88)
 - Power Pole
 - Dollar General Store Boundary Corners (Not Monumented)
 - Existing Trees
 - Tree Line



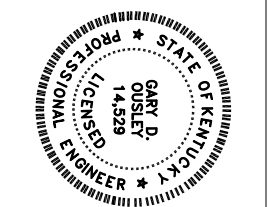
PROPOSED FILL VOLUME CALCULATIONS

Volume Report: \\MKIT-PC\Users\j\Documents\ROYALTON TRAIL TOWN\EXISTING CONTOURS.grd
 Comparing Grid: \\MKIT-PC\Users\j\Documents\ROYALTON TRAIL TOWN\EXISTING CONTOURS.grd
 Grid resolution: X: 14, Y: 11 Grid cell size: X: 100.00, Y: 100.00
 Area in Fill: 323,769.5 SF, 7.43 Acres
 Total Inclusion Area: 328,339.8 SF, 7.54 Acres
 Cut to Fill: 0.00
 Max Cut Depth: 0.59 Max Fill Depth: 4.20
 Cut (CY) / Area (Acres): 3.41 / 0.78
 Fill (CY) / Area (Acres): 694.9 / 15.87
 Fill Volume: 748,350 CF, 27,493.52 CV



**ROYALTON TRAIL TOWN--REVISED PLAN PRELIMINARY
 RECREATIONAL TRAIL FACILITY, ROYALTON, KY**

Alchemy Engineering Associates, Inc.
 MINING & CIVIL ENGINEERING CONSULTANTS
 H2O LABORATORIES
 546 West Old Middletown Road
 Prestonsburg, Kentucky 41653
 Phone: (606) 888-8859 Fax: 888-8847



REVISION DATE 02/26/2018