



THE GOOD NEWS OF GRACE

October 2025

A Newsletter for Members and Friends of
Grace Lutheran Church
1408 Washington Street
Wenatchee, WA 98801-2555
Volume 9 Issue 8



"If you had faith the size of a mustard seed, you could say to this mulberry tree, 'be uprooted and planted in the sea,' and it would obey you." Luke 17:6

*"It's important to note that mulberry trees have fast-growing and extensive root systems that can cause damage to structures such as driveways, garages, foundations, utilities, and septic systems."
(from planetnatural.com).*

Dear People of Grace;

A mustard seed, compared to a mulberry tree, is quite a contrast! Jesus teaches us here about the strength of faith, of even a little bit of faith. Since we recognize that faith is a relationship of trust (according to Hebrews, "the assurance of things hoped for, and the conviction of things not seen"), examples such as the one we encounter here in Luke 17 are partial pictures.

Jesus is good at meeting people where they are. The disciples had asked him to increase their faith. The context of the passage is that Jesus had just been teaching them about the need to forgive: "even if someone sins against you seven times a day, you must forgive." Increase our faith! Forgiving is hard. It's heavy stuff. The tangled roots of the sin or trespass are many times greater than the roots of the mulberry – especially when it involves a long relationship.

Your faith is not a thing that has weight or volume, but your faith can come to life when met by weighty things. Experiences that challenge your self-reliance, your reliance on others, even your reliance on God, can leave you feeling empty or lost. Here is where the seed of faith is planted. It is a spirit of trust. Faith is actively giving consent for the constant presence of God in your life.

I think faith is something we need to practice. Over time, God can work through our faith to uproot whatever it might be that blocks the one most essential relationship, the one we already have in Christ Jesus. In faith, we keep watch for opportunities to accompany one another. In faith, we imagine ways to use our resources for the wellbeing of all. In faith, we dig down into the roots of our relationships and allow God to be the healer, the restorer, the one who brings about new life.

Peace to you,
Pastor James Aalgaard

THE MISSION OF GRACE LUTHERAN CHURCH



To proclaim and celebrate the gospel of Jesus Christ through word and sacraments so that a community of believers is created, trained, nurtured, and sent into mission.

PASTOR JAMES CELEBRATES 25 YEARS OF MINISTRY

November 2 is All Saints Sunday, but we will also take time to recognize Pastor James' 25 years of ministry. Bishop Meggan Manlove will join us in worship as our guest preacher. You are encouraged to bring cards and/or share a special memory or thought with him. We hope you will join us in celebrating this special milestone in Pastor James' ministry journey.



Pastor Ezekiel Mwambungu was the guest preacher at worship on Sunday, September 21. Pastor Ezekiel is from our sister synod in Tanzania and was Grace Lutheran's intern in 1999-2000. It was a special treat to greet him and hear him preach.

Graceful Garden News

A **garden work party** is scheduled for **October 4th** at 9:00. Tasks that need to be completed this year: lay down cardboard, spread/stake weed barrier fabric, clean out team beds, apply wood chips and add compost to all beds. It is likely another work party will be needed late in October.

The next team meeting is October 16th at 5:00.

Irrigation water will be shut off early in October. Renters will be notified that their gardens need to be cleaned out by October 20th.

The garden has had another successful year. Because Grace had no pantry due to the remodel, produce was distributed through the pantry at the Methodist Church. Winton MFG using Grace's property as a drop off site brought many visitors to the garden and supplied our beds with abundant compost. Washington School 2nd graders planted and harvested radishes again in the spring. Jayke Olson, a church member and agricultural student at Wenatchee Valley College, was hired to assist with maintenance and improvements. Jayke has been a great support to the team.

CELEBRATION LUTHERAN CHURCH PARKING LOT TRUNK OR TREAT!

4pm-6pm

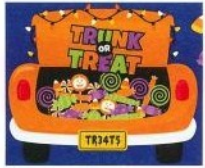
OCTOBER 31

A Community Event!
Costumes Welcomed - or Come as You Are!
Safe Family Fun for All!

801 8TH STREET NE
EAST WENATCHEE

(509)884-3817

FAMILY FUN ~ CANDY ~AND MORE!



www.clcwen.org

churchclc@nwi.net

Last year's Trunk or Treat was a huge success and a lot of fun! We are doing it again and you are invited! There are many ways to participate!

- Donate Candy - Starting September 21st - Bring in candy bags with wrapped candy (no nuts, please) and place in the BIG basket in the narthex at Celebration or in a basket in the narthex at Grace in October.
- Sign-up to provide a trunk to be Trunk'd or Treat'd - You can sign up at Celebration beginning September 21 (by the bulletin board) or in the narthex at Grace.
- Bring your family, friends, dress up, and spread the word!

We will be in Celebration's parking lot – Friday, October 31, 4:00 - 6:00 p.m.



SEPTEMBER 2025 GAME NIGHT

Grace Lutheran's September Game Night was held at Celebration Lutheran Church, 801 8th Street, East Wenatchee, and will continue to meet there during Grace's renovations.

Bring your family, your friends, your favorite games, and a snack to share to our monthly Game Night. We hope to see lots of our friends next month—Friday, OCTOBER 17—6:00—8:30 p.m. **Please join us.**

3rd Friday each month

6:00-8:30 p.m.

October 17, 2025



Generations in Grace

All generations of Grace are invited to a time of food, learning through song, scripture and activity on the 1st and 3rd Sundays, starting October 5.

Come build relationships across the generations together! Our

Generations in Grace gatherings are scheduled for the following Sundays

at 9:30 a.m.: October 5, 19,

November 2, 16, December 7 and 21.

We'll meet in the rehearsal room (use the entrance near the playground.)

Mark your calendars!

Wise Words from a Church Musician

The President of The Hymn Society, an organization dedicated to all things related to congregational song, wrote the article below in a recent issue of the Society's journal. It is good food for thought, meditation, and prayer.

I am very saddened by many things I see happening in the world today. More specifically, it saddens me to see so many attacks on people in our countries as well as other countries. What I see is a lack of respect for others. I see people degrading people. Others take joy in calling people unkind names. Others look for ways to intentionally hurt people. We all do not, cannot, nor should we, have the exact same thoughts or feelings on all subjects. It is healthy to have different opinions. We can grow as individuals and learn from others. It is imperative that we show respect towards one another. We need to look for ways to build one another up and support one another.

There are days I do not want to turn the television on or read the news. I find myself at times isolating in my home. Then, there are days I want to scream or yell at someone. How do I handle these moments? Prayer is a key for me. Spending time alone at home or in the sanctuary or chapel at church provides space and an environment where I can shut out all of the negativity I see. It provides a peaceful time to speak to as well as listen to God. Spending time reading scripture is a way to find comfort. Reading other inspirational or devotional material is another way to focus our minds and thoughts in the right direction.

I find comfort in hymns. The texts can challenge me as well as reassure me of God's faithfulness. They help me remember that my focus should be on God. God comforts me. Hymns help me remember that God is greater than any human. Through hymns I see how God has been faithful in the past, which gives me hope for the future. I want to share a few verses from some hymns I find helpful. You may want to read the entire text to get the complete message.

Come to me, O weary traveler

Come to me, O weary traveler;
Come to me with your distress;
Come to me, you heavy burdened;
Come to me and find your rest.

Rest in me, O weary traveler;
Rest in me and do not fear.
Rest in me, my heart is gentle;
Rest and cast away your care.

Calm to the waves

Calm to the waves. Calm to the wind.
Jesus whispers, "Peace be still."
Balm to our hearts. Fears at an end.
In stillness, hear his voice.

Nothing can trouble

Nothing can trouble; nothing can frighten.
Those who seek God shall never go wanting.
God alone fills us.

God is our refuge and our strength

God is our refuge and our strength,
Our ever present aid.
And therefore, though the earth be moved,
We will not be afraid.

Be still, my soul

Be still, my soul: the Lord is on thy side.
Bear patiently the cross of grief or pain.
Leave to thy God to order and provide,
Who through all changes faithful will remain.
Be still my soul: thy best, thy heavenly Friend
Through thorny ways leads to a joyful end.

Great is thy faithfulness

Great is thy faithfulness, O God my Father;
There is no shadow of turning with Thee.
Thou changest not; Thy compassions they fail not.
As Thou hast been Thou forever wilt be.
Great is Thy faithfulness! Great is Thy Faithfulness!
Morning by morning, new mercies I see.
All I have needed Thy hand hath provided.
Great is Thy faithfulness, Lord unto me!

Light dawns on a weary world

Light dawns on a weary world
when eyes begin to see all people's dignity.
Light dawns on a weary world:
the promised day of justice comes.
The trees shall clap their hands:
the dry lands, gush with springs;
The hills and mountains shall break forth with singing!
We shall go out in joy, and be led forth in peace,
As all the world in wonder echoes shalom.

I highly recommend you make a list of hymns that bring comfort to you. Then, spend time with them. We all know how powerful challenging texts can be. They also bring comfort. May you find peace through hymns during this very turbulent time in the world.

FROM THE DESK OF INTERN LAURA

For a trinitarian perspective of Creation, I don't think Proverbs 8:22-31 gets enough attention. In the lectionary, it peeks in on Holy Trinity Sunday—that makes sense—but even then, why isn't it paired with Genesis 1 or John 1? I first encountered this passage in a seminary class on Creation and Redemption in the Old Testament, and it stopped me in my tracks. When the Hebrew bible speaks of Wisdom, Christians can think of it as the Holy Spirit. Here is Wisdom at the dawn of all things, not as a gray-bearded sage, but as delight itself—dancing, playing, rejoicing in God's handiwork. From the beginning.

As I reflect on this passage, I can't help but think of your own building project. I haven't lived through the whole process the way many of you have, but I've heard stories of how long and noisy the journey has been—it's enough to test anyone's patience. And yet I find myself wondering: how might the Spirit be delighting in all of this? Where might joy or playfulness have broken through, even in the midst of hammering and scaffolding?

And then I imagine the Spirit with a Google Earth view—hovering, as Genesis puts it, over this patch of earth in Wenatchee, watching beams rise, walls take shape, spaces open up. What might she see that makes her smile? Perhaps it's the way people keep showing up and carrying on – such as partnering with Celebration in their worship. Perhaps it's the laughter that sneaks in between frustrations. Perhaps it's simply the promise that this messy, noisy, unfinished work will soon become a place of welcome and gathering.

If Wisdom could speak into our construction zone, maybe she would say: *"I was there at the beginning. I delight not just in the finished product, but in the becoming—in the dust and the delay, in the laughter and the longing."*

May we, too, learn to delight in what is still unfolding.

Blessings and peace,
Intern Laura



Pastoral Intern Laura Olsen was joined by her family as the beginning of her internship was blessed on September 7.

Proverbs 8:22-31 - Wisdom's Part in Creation

- ²² “The LORD created me at the beginning of his work,
the first of his acts of long ago.
²³ Ages ago I was set up,
at the first, before the beginning of the earth.
²⁴ When there were no depths I was brought forth,
when there were no springs abounding with water.
²⁵ Before the mountains had been shaped,
before the hills, I was brought forth,
²⁶ when he had not yet made earth and fields
or the world's first bits of soil.
²⁷ When he established the heavens, I was there;
when he drew a circle on the face of the deep,
²⁸ when he made firm the skies above,
when he established the fountains of the deep,
²⁹ when he assigned to the sea its limit,
so that the waters might not transgress his command,
when he marked out the foundations of the earth,
³⁰ then I was beside him, like a master worker,
and I was daily his delight,
playing before him always,
³¹ playing in his inhabited world
and delighting in the human race.



Laying the patio bricks



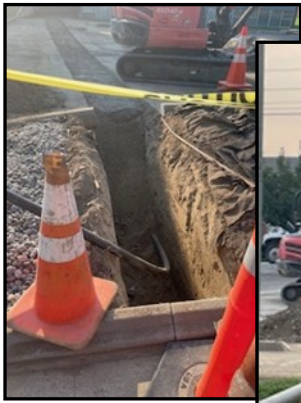
Pouring concrete around the new addition



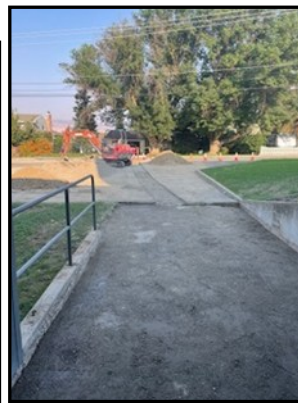
Building a template for the bridge from the patio to the Fellowship Hall



Pastor James enjoying lunch on the new patio



Creating a new water line to Elliott Street



CONSTRUCTION UPDATE



Installing Siding & windows and framing the upper windows



Painting the new fire wall in the Fellowship Hall



Mission Endowment Team News

The Mission Endowment Team, with the approval of the Church Council, has recommended the following 2025 Endowment Fund distribution requests totaling **\$30,000** to be voted on at the next congregation meeting (October 19):

1. **Wenatchee Valley Afghan Support Circle** submitted by Joyce Fisher & Rhonnie Craven -**\$2,400**
 - a. 1 month rent for refugee family.
2. **BBT Foundation Music & Arts Fund** submitted by Dr Marshall Thomas - **\$13,000**
 - a. provide music, instruments & lessons to under-served & under-privileged public school children in the Wenatchee Valley.
3. **Doris's Place** submitted by Kay Fisher & Pat Fitzgerald - **\$2,500**
 - a. social respite care program at the Seventh Day Adventist Church managed by Tamara Steffen opening spring of 2026.
4. **ELCA Global Mission/Service & Justice Unit** submitted by Pastor Jenna Bergeson - **\$7,500**
 - a. support of the GLC 2019-20 pastoral intern in her mission work as Southeast Asia Regional Representative.
5. **Project Hope & Healthy Neighbors International in Nicaragua** submitted by Dave DeJong - **\$1,600**
 - a. subsidize 40 Ecocina Stoves that are much more efficient & put out less harmful smoke than an open wood fire.
6. **Grace Quilters** submitted by Dee Ann Gregg - **\$500**
 - a. batting & backing material, shipping, truck rental, boxes for packing.
7. **Women's Resource Center Bruce Transitional Housing** submitted by Lisa Burgett - **\$2,500**
 - a. gift cards for children living there as incentives & for fun activities outside the facility.



Music Ensembles

Grace's music ensembles enliven and enrich our worship experiences. We rejoice in the addition of vocal and instrumental groups, involving dozens of talented people of school age and beyond. We invite new members in all of our groups at any point during the school year. Fall is an ideal time to explore this opportunity. For further information, or to volunteer, contact Director of Music Ministries Ruth Anderson at the church office.

Bells of Grace (teens-adults) meets in the balcony on Wednesdays, 6:15-7:15 pm.

Voices of Grace (teens-adults) meets in the balcony on Wednesdays, 7:30-9:00 pm.

Ukulele Ensemble (teens-adults) meets in the Rehearsal Room on the 2nd and 4th Tuesday of the month, 6:30-7:30 pm **beginning October 14.**

Drum Circle (all ages) meets in the Rehearsal Room on the 2nd Tuesday of the month, 5:30-6:15 pm **beginning October 14.**

Growing in Grace (children age 3 and up) meets periodically throughout the season

Brass Ensemble (teens-adults) rehearses prior to festival worship services

Join a Music Group

A month, a season, a year, a lifetime.
You'll be glad you did...

SOCIAL CONCERNS TEAM

Social Concerns Team Looking for New Members



The Social Concerns Team is looking for new members. The team meets monthly during the school year and takes the summer off for the most part. Some of the projects the team does include Packing Friendship, Dipes and Wipes Pantry, Caring Meals, 1000 Coats 4 Kidz, Families in Need, Noisy Offering, Gods Work Our Hands Sunday, and Christmas Gift Cards for WHS students that are experiencing homeless. If you are interested in serving on the committee, contact Kay Fisher at Omafisher222@gmail.com or cell 509-669-3220 or Mike Sweeney at Sweence@gmail.com or cell 360-533-4486.

1000 Coats 4 Kids – Saturday October 25th

The Social Concerns Team will be collecting and sorting coats for local students on Make A Difference Day again this year. We will continue our coat drive for senior high school students, until the 26th of October. There will be a box in the narthex where church members can leave a donated adult sized coat. Serve Wenatchee will be collecting school-aged coats at the Albertson's parking lot on Make a Difference Day, which they will deliver to the Methodist Church the same afternoon around 2:30pm. We need volunteers to help sort coats when they are delivered on Saturday, October 25th.



Pantry Update

We are still encouraging the congregation to donate extra food and items from your garden to the Little Free Pantries at First United Methodist Church and St. Luke's Episcopal Church.

Packing Friendship

We'd like to give a huge THANK YOU to St. Luke's Episcopal Church! They are providing space for us to store food and pack bags while we wait for the remodel project to be completed. We hope to be back in our usual space in January, but until then we are so thankful for the generosity of St. Luke's. We start delivering to Washington Elementary School, Foothills Middle School, and Pinnacles Prep on October 1. Special thanks to our volunteers who have been flexible and so helpful during our time of transition!

Packing Friendship supplies at St. Luke's - we're ready for another school year!



Discernment Sharing & Listening Groups Final Session - Sunday, October 5

Thank you to everyone who has participated in our discernment and listening groups. *If you weren't able to attend a session, you are welcome to attend our last session on Sunday October 5 following worship. You can also submit written answers to the discussion questions below.* Please email your response to Riva Morgan at rmorgan@nwi.net.

Discussion Questions:

1. What two specific needs are you aware of in the community that surrounds Grace?
2. What gifts/strengths does Grace have to meet those needs?
3. In what ministry areas is there energy and focus at Grace Lutheran for faith-filled ministry?
4. What does the mission and ministry of Grace mean to you?

October Worship Assistants

	Acolyte	Assisting Minister	Lector	Altar Guild	Tech	Communion Assistant
10/5		Kate Gregg	Suellen Harris		Marlena La Paz	Karen Zanol
10/12				Denise Miller	Chad DuLac	
10/19	Elsa Vogt					
10/26						

Seeking Worship Helpers

Volunteer helpers make our worship run smoothly. We would love to expand our volunteer pool. [Here is a link to a "google sheet"](#) where you can put your name on an open slot. If you are having a hard time navigating the google sheet, please call (509-663-2189) or email our [church office](#) or [Pastor Aalgaard](#) and we can help.

Please note! The google sheet is a single document that can be changed (and added to) by anyone who has the link. You are very welcome to add your name to a slot that's empty, but please do not remove others' names or otherwise change the form.

LECTIONARY READINGS

Sunday, October 5 17th Sunday after Pentecost

Habakkuk 1:1-4; 2:1-4
Psalm 37:1-9
2 Timothy 1:1-14
Luke 17:5-10

Sunday, October 12 18th Sunday after Pentecost

2 Kings 5:1-3, 7-15c
Psalm 111
2 Timothy 2:8-15
Luke 17:11-19

Sunday, October 19 19th Sunday after Pentecost

Genesis 32:22-31
Psalm 121
2 Timothy 3:14 - 4:5
Luke 18:1-8

Sunday, October 26 Reformation Sunday

Jeremiah 31:31-34
Psalm 46
Romans 3:19-28
John 8:31-36

ANNA & MIRIAM CIRCLES

Anna Circle will meet on Tuesday, October 21, at 10:00 a.m. at Grace (rehearsal room). If you have questions, feel free to contact [Linda Sinnett](#) or [Faye DeJong](#).

Miriam Circle will meet on Tuesday, October 21, at 7:00 p.m. at Grace (back of the sanctuary). If you have questions, please contact the church office.

Morning Prayer

We invite you to Morning Prayer, meeting Thursday mornings at 7:00 a.m. (as an effort to accommodate people's work schedules). The following is a description of our typical morning prayer routine:

- + a time of reflecting/sharing together about the upcoming scripture for Sunday
- + lighting candles during a time of informal prayers, which can be offered aloud or silently
- + light refreshments and fellowship afterward at approximately 7:40 a.m.

It's a great way to start the day! Hope to see you there.

PRAYERS OF GRACE

- ♦ *The Family of Bonnie Howeler* – Bonnie died on September 22. Prayers for peace and comfort for her family. A memorial service has been scheduled for October 18 at 2 p.m. at Grace.
- ♦ *Cheri Knudson* - for healing.
- ♦ *Dan Martinson (Ann Martinson-Bartlett's brother)* – prayers for continued healing for his heart and for medication refinement.
- ♦ *The Family of Patty Christensen* - Patty died on August 8. Prayers for peace and comfort for the family. A memorial service is scheduled for Saturday, October 11 at 1 p.m. at Grace.
- ♦ *Dan Hutchison* - prayers that he will be able to receive help for a medical concern. Also, emotional support for Joe Trowbridge as he navigates this time for Dan.
- ♦ *David Thomas (Marshall Thomas' brother)* - prayers for healing as he faces serious health issues.
- ♦ *Elizabeth Revelise (Chris Prince's wife)* - for healing, strength and the rebuilding of immunity as she finishes chemotherapy.
- ♦ *Jim Wurl* - as he builds strength to walk.
- ♦ *Paul Arndt* - pulmonary fibrosis which is untreatable.
- ♦ *Erling Rivedal* - receiving hospice care.

To submit a prayer, please call (509-663-2189) or email our [church office](#) or [Pastor Aalgaard](#). Please share with us details that are pertinent to the request. If you are asking us to pray for a person other than yourself, please seek that person's permission. Prayer requests are published for four weeks. You are welcome to resubmit your request if you would like it to remain on the list longer. Updates are welcome, also. We will do our best to help your request have a balance of privacy protection and sharing information. The ministry staff at Grace reserves the right to edit requests.

Semi-Annual Meeting Sunday, October 19

Our Semi-Annual Congregational meeting will be held in the sanctuary on October 19, 2025, directly following our 10:30 a.m. worship. Please plan to attend.

Agenda items include: Ministry update from Pastor Aalgaard, Building renovation update including financial position, 2025 budget review, report from our discernment group, Mission Endowment distributions, and election of leadership positions which will begin in early 2026.

OCTOBER BIRTHDAYS

Lisa Zanol	10/1	Carol Guenther	10/11	Wolf Mueller	10/26
Pat Fitzgerald	10/2	Daria Gausman	10/12	Cooper Redmon	10/26
Trina DeCamp	10/3	Grace Schauer	10/12	Rob Salter	10/27
Trish Ginty	10/6	Tim Zanol	10/13	Dee Ann Gregg	10/29
Tammy Kintner	10/7	Lisa Burgett	10/19	Soraya Martinez	10/29
Cathy Sweeney	10/7	Annika Peterson	10/19	Kim Lobe	10/30
Kay Fisher	10/8	Maren Peterson	10/19	Dean O'Daffer	10/30
Ernie Bentsen	10/10	Kathy Gavin	10/20	Andy Sheets	10/30
Gigi Shaw	10/10	Monte Olson	10/20	Sue Thompson	10/30

Building Better Tomorrows Foundation Presents First Gifts to Wenatchee High School Band

We're excited to announce that the BBT Foundation made its first official gift — a guitar and bass volume pedal — to the Wenatchee High School Band and Jazz Ensemble programs!

Band Director Jim Kovach is thrilled to receive the donation, which will be used across multiple ensembles and serve students for years to come. This marks the beginning of the Foundation's work to tangibly support young musicians — particularly underserved students — with meaningful, lasting contributions.

In addition, the Foundation received its first instrument donation from Phil Gregg: a clarinet that will be used to provide a musical experience to a deserving student. Thank you, Phil! This is very much appreciated.

Here's to the first of many ways we will fulfill the Building Better Tomorrows mission: to improve the lives of underserved youth in the Greater Wenatchee Valley through music and the arts.

For further information on the Foundation's work, or to become involved in this community endeavor, please contact Board President Joanne Dalinkus or Deacon Ruth Anderson through the church office.



WHS Band Director Jim Kovach
gratefully receives gifts

TREASURER TALK: 8/31/25 Results

Offerings for the first eight months totaled \$279,223. This is \$20,777 under budget. Offerings for the first 8 months compared to last year are down by \$21,306. Interest income for the first 8 months totaled \$52,554. This is over budget by 32,554. Expenses were \$342,558 which is \$16,034 under budget. Resulting Net Margin (\$10,781) compared to the projected deficit of (\$41,812).

	Jan-Aug 2024	Jan-Aug 2025	2025 Budget	Variance
Total Offerings, & Misc	\$300,529	\$279,223	\$300,000	(\$20,777)
Total Interest	<u>\$48,981</u>	<u>\$52,554</u>	<u>\$20,000</u>	<u>\$32,554</u>
Total Income	\$349,511	\$331,777	\$320,000	\$24,088
Operating Expenses	(\$349,378)	(\$342,558)	(\$361,812)	\$16,034
Net Margin (Deficit)	\$132	(\$10,781)	(\$41,812)	\$31,031

Cash on hand is \$435,459 which includes Treasurer Reserve of \$40,000 and the Deficit Reserve of \$258,500.

	08/31/24	8/31/25
Cash Surplus Position	\$122,563	\$122,641
Treasurer Reserve	\$40,000	\$40,000
Deficit Reserve	<u>\$258,500</u>	\$258,500
Total	\$421,063	\$421,141

[Dennis Burgett](#)

COUNCIL CORNER

September 16, 2025

- Grace’s Discernment team is having great success engaging church members on future ministry and will provide collected insights to Council in October.
- The Semi-Annual Congregation meeting will be held October 19th following worship.
- Council approved a draft Mission Endowment disbursement request that will be presented to the Congregation for approval during our semi-annual meeting.

2025 TEAM & COMMITTEE LEADERS

Arts: Marshall Thomas
Building & Grounds: Dave Coe, Tom Gausman
Endowment: Karen Zanol
Faith Formation: *Open*
Fellowship: *Open*
Graceful Garden: Linda Sinnett
Pastoral Support: Julie Banken
Staff Support: *Open*
Social Concerns: Mike Sweeney,
Bob Bartlett
Stream Team: Marlena La Paz
Worship: Kathy Gavin
Youth & Community: Sue Coe
Memorial Garden: Ernie Bentsen

2025 CHURCH COUNCIL

President: Suellen Harris
Vice President: Dave Coe
Treasurer: Dennis Burgett
Secretary: Chad DuLac
Members-at-Large: Tory Schmidt
John McQuaig
Paula Salter
Tami Woolsey

October 2025

Sunday	Monday	Tuesday	Wednesday	Thursday	Friday	Saturday
			1 11:00 a.m. Lectionary Study 6:15 p.m. Bells of Grace 7:30 p.m. Voices of Grace	2 7:00 a.m. Morning Prayer 6:30 p.m. Book Club	3	4 9:00 a.m. Garden Work Party
5 9:30 a.m. Generations in Grace 10:30 a.m. Worship	6 7:00 p.m. Appelaire's	7 7:00 p.m. Arts Team	8 11:00 a.m. Lectionary Study 6:15 p.m. Bells of Grace 7:30 p.m. Voices of Grace	9 7:00 a.m. Morning Prayer 5:30 p.m. BBTF Foundation 6:30 p.m. Book Club	10	11 1:00 p.m. Patty Christensen Memorial Service
12 10:30 a.m. Worship	13 7:00 p.m. Appelaire's	14 3:30 p.m. Building & Grounds Team 5:00 p.m. Social Concerns Team 5:30 p.m. Drum Circle 6:30 p.m. Ukuleles	15 11:00 a.m. Lectionary Study 6:15 p.m. Bells of Grace 7:30 p.m. Voices of Grace	16 7:00 a.m. Morning Prayer 6:30 p.m. Book Club 5:00 p.m. Graceful Garden	17 6:00 p.m. Game Night at Celebration Lutheran	18 2:00 p.m. Bonnie Howeler Memorial Service
19 9:30 a.m. Generations in Grace 10:30 a.m. Worship Congregational Meeting <i>following worship</i>	20 7:00 p.m. Appelaire's	21 10:00 a.m. Anna Circle 6:00 p.m. Church Council 7:00 p.m. Miriam Circle	22 11:00 a.m. Lectionary Study 6:15 p.m. Bells of Grace 7:30 p.m. Voices of Grace	23 Newsletter Deadline 7:00 a.m. Morning Prayer 6:30 p.m. Book Club	24	25
26 10:30 a.m. Worship	27 7:00 p.m. Recital	28 6:30 p.m. Ukuleles	29	30	31 4:00-6:00 p.m. Trunk or Treat at Celebration Lutheran	

GRACE LUTHERAN CHURCH
Evangelical Lutheran Church In America
1408 Washington Street
Wenatchee, WA 98801-2555
(509) 663-2189

Return Service Requested

GRACE LUTHERAN CHURCH STAFF

Pastor James Aalgaard pastor@glcwen.org	Pastor
Deacon Ruth Anderson deacon@glcwen.org	Director of Music Ministries
Laura Olsen intern@glcwen.org	Pastoral Intern
Jen Pearson -Gale office@glcwen.org	Office Administrator
Ann Martinson-Bartlett	Office Assistant

SUNDAY WORSHIP

10:30 a.m.

CHURCH OFFICE HOURS

Tuesday - Thursday 9:00 a.m. - 3:00 p.m.
Friday 9:00 a.m. - 12:00 p.m.

CONTACT

(509) 663-2189
office@glcwen.org

WEBSITE

www.glcwen.org