



# THE GOOD NEWS OF GRACE

February 2026

A Newsletter for Members and Friends of  
Grace Lutheran Church  
1408 Washington Street  
Wenatchee, WA 98801-2555  
**Volume 10 Issue 1**



*Beatitude Time (this teaching begins at Matthew 5:1)*

Dear People of Grace;

Take a moment with me to consider the word “blessing.” The beatitudes recounted in Matthew 5 begin with the word “blessed.” Another use of that Greek word is “happy,” which may give us pause if we were to read every occurrence of “blessed” as “happy.” For the sake of this article, let’s focus on “blessing.”

“To bless” can be understood as to grant permission or allow to happen. A person who holds a position of power (someone in a family or other organization) can give their blessing of an action that is about to happen. The proposed action is allowed to proceed, and the blessing gives the action added weight.

A blessing can be a material thing – something tangible that comes into one’s possession. A parcel of land, an inheritance, etc. Note that the material thing opens an opportunity or perhaps a safety net.

The sense of blessing in the Beatitudes is something else. It is relational, usually future-focused. I would like us to consider that this particular kind of blessing involves self-sacrificing love. Could we think of the many ways we bless one another as a channeling of self-sacrificing love that we ourselves have experienced through Christ? This kind of blessing expands, multiplies, even defies all the rules we know about scarcity. I do hope and pray fervently that our congregation can be a channel of God’s love, thereby being a blessing to the world. Your financial gift? A blessing. Your greeting of peace to one another? A blessing. Your attention toward the young people of the congregation? A blessing. To bless, in this sense, is to take part in the self-sacrificing love made perfect in Christ. This is our vocation.

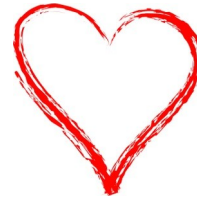
Blessings of Christ to you,  
Pastor James Aalgaard

## **Assisting Minister Workshop**

There will be a workshop for assisting ministers on Saturday February 28th from 9:00 to noon. Worship leadership comes in many forms. The assisting minister can serve as cantor and lector, lead prayers of intercession, help with communion distribution, and offer other prayers and blessings. This Workshop will give us a chance to practice some of these roles together and answer any questions about leading the liturgy here at Grace. If there are any roles that do not fit for you, we will accommodate as needed. Please sign up in the back of the sanctuary or narthex and we will reach out to you with next steps.

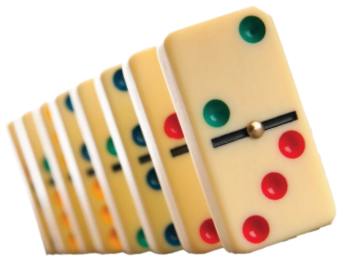
## **THE MISSION OF GRACE LUTHERAN CHURCH**

To proclaim and celebrate the gospel of Jesus Christ through word and sacraments so that a community of believers is created, trained, nurtured, and sent into mission.



## GLC Valentines

Each year we send Valentines to college students, military personnel and other far-flung friends of Grace. The valentines will be in the **Fellowship Hall** on Sunday, February 1, for you to sign. Please take a minute to add a greeting or simply sign your name. We'll add some treats and send the love to our siblings in Christ who are away from home.



**Friday, February 20**  
**6:00-8:00 p.m.**

**Fellowship Hall**

Do you like to play board games, card games, dominoes, Bunco?

We invite you to join us for **Family Game Night** on **Friday, February 20, from 6:00 - 8:00 p.m.** in the Fellowship Hall. Bring a snack and your favorite game to share. **EVERYONE** is invited to an evening of fun and fellowship!

All are welcome!

### **Future Game Nights:**

Friday, March 20

Friday, April 10

Friday, May 8



## Ash Wednesday Worship

Wednesday, February 18

12:00 and 6:30 p.m.

## Lenten Soup Suppers

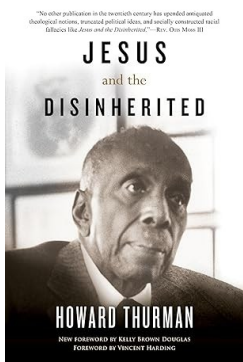
Wednesdays at 5:15 p.m., beginning February 25

Join us for our weekly Lenten Soup Suppers, each Wednesday during Lent, beginning February 25. Volunteers are needed to provide soup and bread or rolls. Sign-up sheets are in the narthex. Meals will be served at 5:15 p.m.



## Midweek Lenten Series 2026

The season of Lent begins with Ash Wednesday, February 18 (services at noon and 6:30 p.m.). During the following Wednesdays, we will have an evening prayer service on the theme “Open My Life, Lord.” It seems appropriate for the completion of our renovation! Scripture, song, and prayer will support the worship. Please arrive ahead of time for soup and bread at 5:15 p.m. (fellowship hall), then worship at 6:00 p.m. Evening prayer will be February 25, March 4, March 11, March 18, and March 25.



## Lenten Book Study

Please join us in the library (just inside the main doors to the left) for a study of Howard Thurman’s *Jesus and the Disinherited*. The study will start at 6:30 p.m., following our evening prayer service, on Wednesdays February 25, March 4, 11, 18, and 25. A second offering of the same study will take place Sundays at 9:30 a.m., starting February 22 (also in the library). Watch for a sign up in the back of the sanctuary or the narthex.

This book is described as “Thurman’s revolutionary return to the story of Jesus, an impoverished, heavily persecuted Jew who was poor, disinherited, and dispossessed. Thurman contends that Jesus has always been a partner to the oppressed, even linking his struggles to the enduring discrimination and violence Black Americans experience... *Jesus and the Disinherited* is a timeless testimony of faith that demonstrates how to thrive and flourish in a world that attempts to destroy one’s humanity from the inside out.”

# FROM THE DESK OF INTERN LAURA

## Open My Life, Lord: Lent as Desert Time—and Companioned Time

For many people, Lent is associated with giving something up—chocolate, coffee, maybe a favorite habit that's gotten a little too comfortable. Those practices can be meaningful, but for me, Lent has long meant something else. *Desert time*. Not the romantic kind of desert with colorful sunsets and solitude, but the kind that is stripped of even bare essentials. It had not been my practice to self-impose an arbitrary desert, but one year I decided to give the spiritual practice of “desert” a try.

I gave up social media—hardly a “bare essential”—but I did come to realize how much time I was wasting that could be better spent on more meaningful social interaction. It also meant that in the middle of Lent when my 2<sup>nd</sup> cancer diagnosis happened, I didn't publicly post about it. I didn't share updates or prayer requests. I didn't “control the narrative.” No one outside of my inner circle knew what I was walking through until I was on the cusp of going into the hospital for a mastectomy just after Easter.

That experience taught me something important—not just about silence, but about how easily we assume we know what one another is carrying. We live real lives. Hard things happen quietly. And sometimes we find ourselves in the desert without a map, a timeline, or an explanation.

Which is why Lenten worship matters so much to me. Not for the desert, but to remind me of the importance of accompaniment in the midst of it. Our series for midweek services, “Open My Life, Lord”, is not about fixing ourselves or performing a better spiritual discipline. It's about the grace of opening what has become closed off through fear, fatigue, grief, or survival.

Each week we will pray together for something different to be opened: our eyes, our hands, our ears, our hearts, and finally, our lives.

These are not abstract ideas. They are profoundly embodied ones. And sometimes, what needs opening most is not a single part of us, but the whole of our life—cracked open again to God's presence, even in places we would rather keep sealed.

What I love about these Wednesday evenings is that worship itself creates space for accompaniment. Silence is shared. Prayer is shared. Song is shared. Even our small, tentative gestures—open hands, lifted eyes, listening bodies—are done together. But even more than that: Christ is with us—dwelling with us in the middle of it. In joy and laughter. In grim news and sleepless nights. In water and word, bread and wine. In life, and in death, and in the life to come.

If Lent finds you feeling a little dry this year, a little worn thin, a little unsure of what comes next, you are not failing at Lent. You may simply be in desert time. Real life, as we all know, doesn't pause politely for liturgical seasons. It arrives when it arrives.

Come anyway.

Let the prayers hold you when you cannot form your own.

Let the songs carry what you cannot yet say.

Let Christ meet you where your life is cracked open.

We will walk this road together.

- Pastoral Intern Laura Olsen



## Moving into New Offices:

Seeking volunteers. We would appreciate help moving furniture and other items into the administrative office and the copy room starting at noon on Monday February 9. The staff will be doing some organizing in the morning to prepare for volunteers.



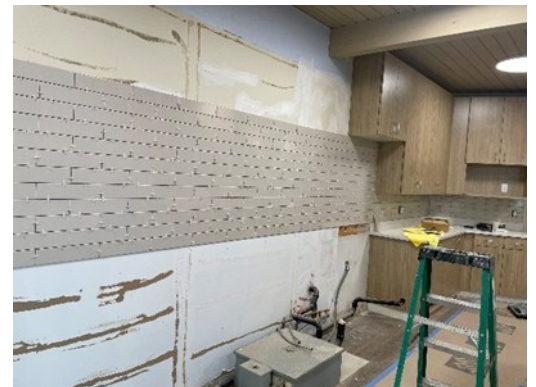
Another temporary wall is removed, and painting begins on the Elliott Street entrance walls.



The restroom installations begin.



Progress continues on the coffee bar sink and storage.



Kitchen cabinets are installed and tiling begins.



Work finishes on the narthex ceiling.



Library bookcases are installed.



Doors are framed in the administration wing.



Carpet is laid in the new administration wing.

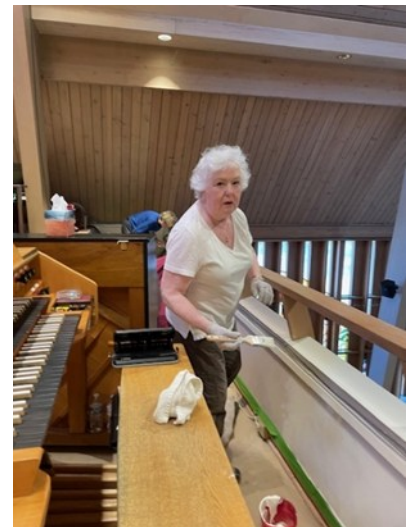




Tile is laid in the entrance area off of Elliott Street..



Flooring is laid in the new narthex and library.



Balcony painting and wall repair on January 24 was a great improvement! We are grateful to many who helped brighten up the space used by so many. Our thanks to Dean O'Daffer, Mike Sweeney, Tom Gausman, Kathy Otheim, Dave Coe, Dee Ann Gregg, Juma Khan, Kathy Gavin, Mark Woolsey and Deacon Ruth Anderson for their careful work.



## Children Leading Worship at Grace



We are thankful for the ways our young people lead us in worship. At this writing, there are 3 opportunities to gather as a group and make musical offerings this Spring term: March 8, April 26 and May 10. Watch for details in bulletin inserts, emails, and upcoming newsletters, or see Deacon Ruth for more information



## Grace Lutheran Quilters

Grace Lutheran Quilters meet on Fridays from 9-11:30. All are welcome to join in the back of the sanctuary under the choir loft. For more information, call Dee Ann Gregg: 503-801-4048.

## Learn About Contemplative Prayer

Join us at Grace Lutheran Church Saturday March 21 for a workshop on contemplative prayer. Pastor James and Ina O'Connor are organizing the event, and we are excited to invite all participants into experiences of contemplative prayer. Saturday March 21, 9:00 a.m. to 12:30. Look for a sign up sheet in the back of the sanctuary or in the narthex.



## SOCIAL CONCERNS TEAM

### Noisy Offering



It's that time of year again. Look underneath the couch, inside your drawers, pockets, in between the seat cushions, and inside your car. We are collecting coins for World Hunger. We will start handing out the piggy banks on Wednesday, February 18th. Then through Lent you can collect the coins and put them in your piggy bank. On Palm Sunday, March 29th, you can bring your piggy banks and put the coins in the big container and help bring them to the altar to be blessed. The monies we collect will help those affected by hunger in the world. This is not an event just for children. All ages are encouraged to participate!



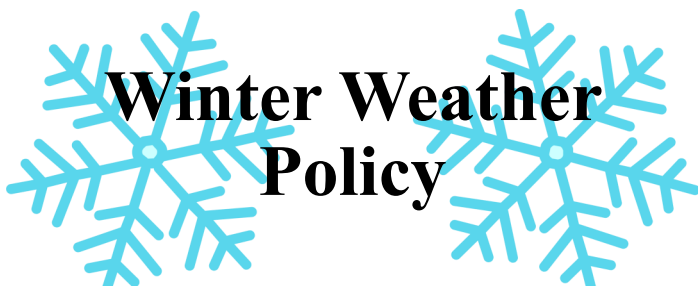
### ELCA Advocacy

ELCA Advocacy provides opportunities to connect, be informed, and reach out to officials on relevant, timely issues as we stand up for policies that create opportunities to overcome poverty, promote peace and dignity, and care for God's creation. The Social Concerns Team would like to encourage you to follow ELCA Advocacy online and to sign up for their action alerts. You can get more information and sign up on their website here:

<https://www.elca.org/our-work/publicly-engaged-church/advocacy>. Action alerts relate to the Social Concerns Team's focus on the issues of food insecurity, homelessness and education.

### Packing Friendship

Packing Friendship has continued to provide food for local students during our remodel project. Since September, we have stored food and packed bags at St. Luke's Episcopal Church. We are grateful to their congregation for the use of their space during this time, but we are also looking forward to being back at Grace starting sometime later in February. It has been extra work for the volunteers transporting food between the two churches. Pat Strand, Carolyn Bentsen and Tammy Beschen have gone above and beyond to keep the program going. Thank you!!



Midweek programming for our congregation should be a safe experience for all participants. At times, we must consider road conditions. When Wenatchee schools cancel activities due to inclement weather, Grace Lutheran Church will respond in kind and cancel or postpone all activities. We will communicate these decisions to the congregation and the public to the best of our ability.

Sunday, February 1st, following worship, please join Lutheran World Relief representative Pastor Lisa Kipp as she shares information about the work of Lutheran World Relief and has conversation with us. We will meet in the front of the sanctuary. We hope you can join us!

Rev. Lisa Kipp serves as the Director of Congregational Engagement at Lutheran World Relief. In her role, she leads a team that connects congregations across the United States with LWR's work of bringing lifesaving aid and long-term hope to our most vulnerable neighbors around the world. As part of this work, she also works closely with Lutheran World Relief's Quilt and Kit Ministry, a program that has been a part of the fabric of thousands of Lutheran congregations for the past 80 years. Prior to this role, Rev. Kipp served an ELCA congregation in Rochester, MN, for nearly twenty years. She continues to call Rochester home.

Affirming God's love for all people, Lutheran World Relief works with Lutherans and partners around the world to end poverty, injustice and human suffering. Founded by Lutherans in the United States at the end of World War II, LWR tackles global poverty by helping people adapt to the challenges that threaten their livelihoods and well-being. They provide aid in emergencies and help families restore their lives. They partner with local leaders to grow rural economies and build healthy communities, breaking the cycle of poverty so our neighbors all around the world can thrive.



**LUTHERAN  
WORLD RELIEF**

☆ All generations of Grace are invited to a time of food, learning through song, scripture and activity on the 1st and 3rd Sundays. Come build relationships across the generations together! Our Generations in Grace gatherings are scheduled for the following Sundays at 9:30 a.m.: February 1 and 15. We'll meet in the rehearsal room (use the entrance near the playground). Mark your calendars!



# FEBRUARY BIRTHDAYS

Mary DeMarce	2/1	Kate Gregg	2/11	Mary Henson	2/23
Dorothy Thompson	2/1	Isaiah Banken	2/13	Shannon Salter	2/23
David Bentsen	2/2	Gabe Stefanides	2/13	Carl Sjoberg	2/23
Barry Heminger	2/3	Emily Tilger	2/14	Rose Applegate	2/24
Lynn Heminger	2/3	Ted Crum	2/16	Alan Olson	2/24
Monte Vogt	2/3	Deborah Dormaier	2/16	Alora Martinez	2/25
Judy Johnson	2/6	Sarah Kintner-Thorpe	2/18	Nancy Spurgeon	2/25
Sara O'Daffer	2/6	Cole Godfrey	2/19	Sarah Eisert	2/26
Collin Paiva	2/7	Denise Miller	2/19	Mark Lee	2/26
Tilly Bates	2/8	Joe Trowbridge	2/20	John Applegate	2/27
Dee Griffith	2/8	Dawn Aalgaard	2/21	Tom Gausman	2/27
Matt Tilger	2/8	Pat Brown	2/21	Debbie Lapo	2/27
Peggy Swanson	2/10	Kathy Jo Evans	2/21	Jen Pearson-Gale	2/27



*Thank  
You*

I'd like to thank everyone for your prayers, and for the love and support you have shown to me and Erling over the past few years. It meant so much to both of us.

We will hold a memorial service for Erling on Saturday, March 14 at Grace Lutheran. The service is at 11:00 a.m. with a reception following.

Wanda Rivedal

# February Worship Assistants

	Greeters	Assisting Minister	Lector	Altar Guild	Tech	Communion Assistant
2/1			Lisa Zanol	Denise Miller	Asher Campbell	Karen Zanol
2/8		Kristen Thorstenson	Dee Ann Gregg		Marlena La Paz	
2/15			Joyce Owens		Phil Gregg	
2/22			Riva Morgan		Erik Olson	

## Seeking Worship Helpers

Volunteer helpers make our worship run smoothly. We would love to expand our volunteer pool. [Here is a link to a "google sheet"](#) where you can put your name on an open slot. If you are having a hard time navigating the google sheet, please call (509-663-2189) or email our [church office](#) or [Pastor Aalgaard](#) and we can help.

Please note! The google sheet is a single document that can be changed (and added to) by anyone who has the link. You are very welcome to add your name to a slot that's empty, but please do not remove others' names or otherwise change the form.

## LECTIONARY READINGS

**Sunday, February 1**  
4<sup>th</sup> Sunday after Epiphany

Micah 6:1-8  
Psalm 15  
1 Corinthians 1:18-31  
Matthew 5:1-12

**Sunday, February 8**  
5<sup>th</sup> Sunday after Epiphany

Isaiah 58:1-12  
Psalm 112:1-10  
1 Corinthians 2:1-16  
Matthew 5:13-20

**Sunday, February 15**  
Transfiguration of Our Lord

Exodus 24:12-18  
Psalm 2  
2 Peter 1:16-21  
Matthew 17:1-9

**Sunday, February 22**  
1<sup>st</sup> Sunday in Lent

Genesis 2:15-17; 3:1-7  
Psalm 32  
Romans 5:12-19  
Matthew 4:1-11

## ANNA & MIRIAM CIRCLES

**Anna Circle** will meet on Tuesday, February 17, at 10:00 a.m. at Grace (meeting room TBA). If you have questions, feel free to contact [Linda Sinnett](#) or [Faye DeJong](#).

**Miriam Circle** will meet on Tuesday, February 10, at 7:00 p.m. at Grace Lutheran (meeting room TBA). Please contact the church office if you have any questions.

# PRAYERS OF GRACE

- ♦ *Valerie (Chapman) Burgett (Kristen Thorstenson's cousin) and family* - for peace after the loss of their husband/father Richard Burgett who passed following a long courageous battle with colon cancer.
- ♦ *Fern Keith* - We pray for peace for Fern Keith and family as Fern begins hospice care.
- ♦ *Beth Smallbeck* – prayers for peace and clarity as she explores treatment options for an acoustic neuroma (benign tumor).
- ♦ *Jenny Cooper and family (friends of Jen and Bill Gale)* – Jenny has late-stage pancreatic cancer, prayers that she is admitted to a new clinical trial, as well as for pain relief and peace for Jenny, and strength and comfort for her family.
- ♦ *The friends and family of Diane Stober* - Diane was a former member of the congregation who participated in many church activities. She was also Grace's choir director for a number of years. A memorial service will be held at Grace Lutheran on Saturday, February 14 at 2:00 p.m.
- ♦ *The family of Jane Hensel* - prayers for peace and comfort as they mourn her death.
- ♦ *Cheryl Hatch* – for continued recovery following heart surgery.
- ♦ *The family of Dave Martinson (Ann Martinson-Bartlett's brother)* – prayers for peace and comfort as they mourn Dave's passing.
- ♦ *Dan Martinson (Ann Martinson-Bartlett's brother)* - please continue to keep Dan in your prayers for healing.
- ♦ *Dan Hutchison* – prayers that he will be able to receive help for a medical concern. Also emotional support for Joe Trowbridge as he navigates this time for Dan.
- ♦ *David Thomas (Marshall Thomas' brother)* - prayers for healing as he faces serious health issues.
- ♦ *Elizabeth Revelise (Chris Prince's wife)* - for healing, strength and the rebuilding of immunity as she continues chemotherapy.
- ♦ *Paul Arndt* - pulmonary fibrosis which is untreatable.

*To submit a prayer, please call (509-663-2189) or email our [church office](#) or [Pastor Aalgaard](#). Please share with us details that are pertinent to the request. If you are asking us to pray for a person other than yourself, please seek that person's permission. Prayer requests are published for four weeks. You are welcome to resubmit your request if you would like it to remain on the list longer. Updates are welcome, also. We will do our best to help your request have a balance of privacy protection and sharing information. The ministry staff at Grace reserves the right to edit requests.*

## COUNCIL CORNER

- Council will acquire new furniture for the renovated Narthex.
- We will have a prayer of dedication for our nearly completed building project on Transfiguration Sunday, February 15.



**TREASURER TALK :****12/31/25 Results**

Offerings for the first 12 months were \$397,477 and Interest Earned was \$65,545 for a total of \$463,022. Operating Expenses for the first 12 months were (\$506,594) for a Net Income of (\$43,572). Offerings for the first 12 months were (\$52,523) of Budget and (\$48,849) compared to the prior year. Net Income for the Current Year is (\$43,572) versus Budgeted Net Income of (\$83,418).

	<b>Prior Year</b>	<b>Current Year</b>	<b>Budgeted</b>	<b>Variance</b>
<b>Offerings &amp; Misc.</b>	\$ 433,745	\$ 397,477	\$ 450,000	\$ (52,523)
<b>Interest</b>	\$ 78,126	\$ 65,545	\$ 30,000	\$ 35,545
<b>Total Income</b>	\$ 511,871	\$ 463,022	\$ 480,000	\$ (16,978)
<b>Operating Expenses</b>	\$ (504,086)	\$ (506,594)	\$ (563,418)	\$ 56,824
<b>Net Income (Deficit)</b>	\$ 7,785	\$ (43,572)	\$ (83,418)	\$ 39,846

<b>AS OF</b>	<b>Prior Year</b>	<b>Prior Month</b>	<b>Current Month</b>	<b>Difference</b>
<b>Cash Surplus Position</b>	\$ 130,810	\$ 83,895	\$ 128,753	\$ 44,858 *
<b>Treasurer Reserve</b>	\$ 40,000	\$ 40,000	\$ 40,000	\$ -
<b>Deficit Reserve</b>	\$ -	\$ -	\$ -	\$ -
<b>Total</b>	\$ 170,810	\$ 123,895	\$ 168,753	\$ 44,858

[Dennis Burgett](#)

\* This is due to using the deficit reserve instead of cash.

**2026 TEAM & COMMITTEE LEADERS**

**Arts:** Marshall Thomas  
**Building & Grounds:** Dave Coe, Tom Gausman  
**Endowment:** Karen Zanol  
**Faith Formation:** *Open*  
**Fellowship:** *Open*  
**Graceful Garden:** Linda Sinnett  
**Pastoral Support:** Julie Banken  
**Staff Support:** *Open*  
**Social Concerns:** Kay Fisher, Mike Sweeney,  
Bob Bartlett  
**Stream Team:** Marlena La Paz  
**Worship:** Kathy Gavin  
**Youth & Community:** *Open*  
**Memorial Garden:** Ernie Bentsen

**2026 CHURCH COUNCIL**

**President:** Suellen Harris  
**Vice President:** Tom Gausman  
**Treasurer:** Dennis Burgett  
**Secretary:** Jody Marquardt  
**Members-at-Large:** Tory Schmidt  
Kristen Thorstenson  
Paula Salter  
Tami Woolsey

# FEBRUARY 2026

Sunday	Monday	Tuesday	Wednesday	Thursday	Friday	Saturday
<b>1</b> <b>9:30 a.m.</b> Generations in Grace <b>10:30 a.m.</b> Worship <b>Following Worship</b> Lutheran World Relief Forum	<b>2</b> <b>6:30 p.m.</b> Intern Team <b>7:00 p.m.</b> Appleaires	<b>3</b>	<b>4</b> <b>11:00 a.m.</b> Lectionary Study <b>6:15 p.m.</b> Bells of Grace <b>7:30 p.m.</b> Voices of Grace	<b>5</b> <b>7:00 a.m.</b> Morning Prayer 6:30 p.m. Book Club	<b>6</b> <b>9:00 a.m.</b> Quilters	<b>7</b>
<b>8</b> <b>9:30 a.m.</b> Confirmation <b>10:30 a.m.</b> Worship <b>Following Worship</b> Arts Team	<b>9</b> <b>7:00 p.m.</b> Appleaires	<b>10</b> <b>3:30 p.m.</b> Building & Grounds Team <b>4:00 p.m.</b> Drum Circle <b>5:00 p.m.</b> Ukuleles <b>7:00 p.m.</b> Miriam Circle	<b>11</b> <b>11:00 a.m.</b> Lectionary Study <b>6:15 p.m.</b> Bells of Grace <b>7:30 p.m.</b> Voices of Grace	<b>12</b> <b>7:00 a.m.</b> Morning Prayer <b>11:00 a.m.</b> BeFrienders <b>5:30 p.m.</b> BBT Board <b>6:30 p.m.</b> Book Club	<b>13</b> <b>9:00 a.m.</b> Quilters	<b>14</b> <b>2:00 p.m.</b> Diane Stober Memorial Service
<b>15</b> <b>9:30 a.m.</b> Generations in Grace <b>10:30 a.m.</b> Worship	<b>16</b> <b>7:00 p.m.</b> Appleaires	<b>17</b> <b>10:00 a.m.</b> Anna Circle <b>5:00 p.m.</b> Social Concerns Team <b>6:00 p.m.</b> Church Council	<b>18</b> <b>Ash Wednesday</b> <b>11:00 a.m.</b> Lectionary Study <b>12:00 p.m.</b> Worship <b>6:30 p.m.</b> Worship <b>Following Worship</b> Voices of Grace	<b>19</b> <b>Newsletter Deadline</b> <b>7:00 a.m.</b> Morning Prayer <b>5:00 p.m.</b> Graceful Garden <b>6:30 p.m.</b> Book Club <b>6:30 p.m.</b> Recital	<b>20</b> <b>9:00 a.m.</b> Quilters <b>3:00—5:30 p.m.</b> Group Piano Class <b>6:00 p.m.</b> Game Night	<b>21</b>
<b>22</b> <b>9:30 a.m.</b> Confirmation <b>9:30 a.m.</b> Book Study <b>10:30 a.m.</b> Worship	<b>23</b> <b>8:00 - 6:00</b> Piano Adjudications <b>7:00 p.m.</b> Appleaires	<b>24</b> <b>8:00 - 6:00</b> Piano Adjudications <b>5:00 p.m.</b> Ukuleles <b>7:00 p.m.</b> Recital	<b>25</b> <b>8:00 - 5:00</b> Piano Adjudications <b>11:00 a.m.</b> Lectionary Study <b>5:15 p.m.</b> Soup Supper <b>6:00 p.m.</b> Evening Prayer <b>6:30 p.m.</b> Bells of Grace <b>6:30 p.m.</b> Book Study <b>7:30 p.m.</b> Voices of Grace	<b>26</b> <b>8:00 - 6:00</b> Piano Adjudications <b>7:00 a.m.</b> Morning Prayer <b>6:30 p.m.</b> Book Club	<b>27</b> <b>8:00 - 5:30</b> Piano Adjudications <b>9:00 a.m.</b> Quilters <b>6:00 p.m.</b> Recital	<b>28</b> <b>9:00 a.m.—12:00 p.m.</b> Assisting Minister Training

**GRACE LUTHERAN CHURCH**  
Evangelical Lutheran Church In America  
1408 Washington Street  
Wenatchee, WA 98801-2555  
(509) 663-2189

**Return Service Requested**

**GRACE LUTHERAN CHURCH STAFF**

<b>Pastor James Aalgaard</b> pastor@glcwen.org	Pastor
<b>Deacon Ruth Anderson</b> deacon@glcwen.org	Director of Music Ministries
<b>Laura Olsen</b> intern@glcwen.org	Pastoral Intern
<b>Jen Pearson -Gale</b> office@glcwen.org	Office Administrator
<b>Ann Martinson-Bartlett</b>	Office Assistant

**SUNDAY WORSHIP**

**10:30 a.m.**

**CHURCH OFFICE HOURS**

**Tuesday - Thursday 9:00 a.m. - 3:00 p.m.**  
**Friday 9:00 a.m. - 12:00 p.m.**

**CONTACT**

(509) 663-2189  
office@glcwen.org

**WEBSITE**

www.glcwen.org