

GRACE



LUTHERAN CHURCH

THE GOOD NEWS OF GRACE

December 2020

A Newsletter for Members and Friends of
Grace Lutheran Church
1408 Washington Street
Wenatchee, WA 98801-2555
Volume 4 Issue 11

Growing Peace

*For a child has been born for us,
a son given to us; authority rests upon his shoulders; and he is named
Wonderful Counselor,
Mighty God,
Everlasting Father,
Prince of Peace.*

*His authority shall grow continually, and there shall be
endless peace for the
throne of David and
his kingdom.
He will establish and uphold it
with justice and
with righteousness from this time onward and
forevermore.*

The zeal of the LORD of hosts will do this. (From Isaiah 9)

Dear friends in Christ,

Remember the One born to us. Trust in the One who, born to us, grows and expands continually. Surrender to the Peace that is like a rose ever-blooming from tenderest stem. Awake, awake and greet the new morn.

I participated in a Zoom call recently, hosted by Marlene Wall, president of LCC International University in Lithuania. The virus has been a huge challenge for them as well. (Side note: our congregation has been a supporter of LCC for several years. They are the only Christian liberal arts university in the former Soviet Union.) A photo shared by Marlene showed dark clouds in the distant sky beyond the LCC campus. Yet over the campus was beautiful, warm light.

This photo comes to mind as I pray for the receding of COVID-19. I pray for the warmth of God's light to grow continually, dissipating fears and sickness and death. I pray for the warmth of the love of God in Christ Jesus to bring us together with humility, with grace and understanding.

The above passage is from our Christmas Eve scripture. When you are studying scripture, try diagramming sentences in ways that help you to have new insights. For me, when I diagrammed the above verses, the word "grow" became a new focus for me. The presence of the Christ-child in our midst is something we pray will grow continually. The presence of Christ in our hearts is an ever-unfolding, ever-blossoming kind of presence. And threatening clouds recede against that unfolding of the presence of Christ. Christmas is about the continual growing of peace in our world. We have a role in that, even if it is to simply hold that frame of mind.

Be healthy, and safe, dear people of Grace!

My days off in December: 7, 14, 21, 28, 29

Together! Pastor James Aalgaard



THE MISSION OF GRACE LUTHERAN CHURCH

To proclaim and celebrate the gospel of Jesus Christ through word and sacraments so that a community of believers is created, trained, nurtured, and sent into mission.

Intern Bergen's Top Five Choral Christmas Songs

Hello people of Grace! I pray that you are finding ways to take care of yourselves and stay spiritually nourished during the challenges that come with celebrating Christmas during a global pandemic. One of the holiday traditions I'll miss the most this year is attending Christmas choir concerts, which always managed to remove me from the business of the season and help me focus on the incredible gift of Jesus Christ. So since I won't be able to attend a concert this year, I thought that I would share five of my favorite Christmas choral pieces with you all and share a bit about why they speak the message of Christmas to me.

5. "All My Heart This Night Rejoices" — Z. Randall Stroope <https://www.youtube.com/watch?v=QL4XVyWzRho>

I love how this song slowly envelops you in the act of rejoicing. It starts off so gently, with the soft recognition of angel voices. But by the conclusion, the eight part harmonies overwhelm you with the beauty of the angel's alleluias and your heart wants to leap out of your chest with the joy of Jesus' birth.

4. "Lux Aurumque" — Eric Whitacre
<https://www.youtube.com/watch?v=0j2JRcC6wBs>

What would it be like to actually witness the birth of Christ? What would it be like to see the glory of God inhabit the body of a human baby with human parents in a humble stable? I think that it would look as mysterious as this sounds. That doesn't exactly make sense, but suffice to say that this piece is the sonic definition of divine mystery.

3. "O Day Full of Grace" — F. Melius Christiansen
<https://www.youtube.com/watch?v=IaMO1EfGpKs>

This song declares the triumph of Christmas. It begins with the gentle birth of Christ before developing into a bombastic entry into Heaven before culminating with the glorious declaration, "And there we shall walk in endless light!" Such promise! Such joy! Such certainty we can hold onto that our salvation was accomplished on the very day of Jesus' birth!

2. "Night of Silence" — Daniel Kantor
<https://www.youtube.com/watch?v=obe3cAApvGM>

I love the hymn "Silent Night," but I believe that this is my favorite interpretation of the essential Christmas hymn. This song proclaims peace not by retreating from the world's problems, but by confronting them. We are weary, we are longing, we are suffering... and still we sing "Silent Night" together to assert that our hope in the peace of Christ is stronger than any evil.

1. "O Magnum Mysterium" — Morten Lauridsen
<https://www.youtube.com/watch?v=nn5ken3RJBo>

I'll be honest, I start crying at the very first second of this song. In all of our celebration it can become easy to forget that Christmas is the ultimate gift of God's infinite love for us. This song doesn't forget. And it provides us with six minutes of reminding every cell in your body that because Jesus Christ was born through a human mother we can walk through life knowing that we are made to be loved by God. We are made to love and be loved because God loves us.

Merry Christmas, Grace people! I would love to hear your own favorite Christmas songs, so feel free to send them my way through a message! (intern@glcwen.org) But for now, I hope that you are able to find time to celebrate the gift of love that we receive this year and every year from the God who loves us eternally.

Christmas Eve and Christmas Day 2020

Christmas Eve will be online this year. We will post the service so that you can watch and participate on your own schedule. In other words, there will be no set worship time on Christmas Eve. There will be an opportunity in the service to light a candle and sing Silent Night, Holy Night. **If you would like to borrow candles from Grace**, you can pick them up outside the front entrance of the church. There will be a place to “check out” your candles. The candles will be available starting December 13. **For Christmas Day, we are offering a gift box for you to celebrate the season.** The box will contain a few Grace Lutheran Christmas treat recipes (thank you Sophie!), an ornament (handmade by Grace members), and a few other treats. For us to manage our preparations, we need you to notify us if you would like to have a gift box. Please leave a voicemail at the office at 663-2189, or email pastor@glcwen.org or email intern@glcwen.org.



Youth Christmas Zoomabstractions!

Wednesday, December 9, at 3:45 p.m. the 3rd-5th Grade youth will be celebrating over zoom. Be ready to share your best Christmas story ever!



Sunday, December 20, at 6:30 p.m. the 6th – 12th grade youth will be celebrating over zoom. We are missing our progressive dinner this year, but I have devised a way to have a gift exchange. If you are interested in participating please let Beth know no later than 12/13.

Saturday, December 26, at 4 p.m. the Alumni from near and far will be having a virtual white elephant gift exchange and post-Christmas celebration. The white elephant gift exchange is going to take some coordination, so if you are interested as an Alumni of GLC youth to participate please let Beth know no later than December 16th.

Online Book Study

Starting December 10, Pastor James and Intern Bergen will be leading a study of Dave Daubert’s *The Invitational Christian*. We are offering two time slots over Zoom: Thursdays at 11:30 a.m. and 6:00 p.m. Here’s the schedule:

December 10, 11:30 or 6:00 (please have chapter 1 read as preparation for the first session)

December 17, same times

January 7

January 14

January 21

January 28

February 4

February 11

Please join us! The book is available through online retailers. If you would like Grace to purchase one for you, please let us know. Also, it would be very helpful if you let us know you plan to participate. You can call the office at 663-2189, or better yet, email pastor@glcwen.org, or email intern@glcwen.org.



REVERSE ADVENT CALENDAR

EACH DAY PUT AN ITEM INTO A BOX FOR OUR
LITTLE ESSENTIALS PANTRY

December 1 – box of cereal

December 2 – jar of peanut butter

December 3 – jar of jam

December 4 – bar of soap

December 5 – cleaning product (Comet, dish soap, laundry detergent, etc.)

December 6 – bag of rice

December 7 – bag of dried beans

December 8 – toothbrush

December 9 – toothpaste

December 10 – can of green beans

December 11 – can of corn

December 12 – shampoo/conditioner

December 13 - deodorant

December 14 – flour, sugar, corn meal or other baking item

December 15 – roll of paper towels

December 16 – package of pasta

December 17 – jar of spaghetti sauce

December 18 – baking mix (pancake mix, Bisquick) or other baking item (baking soda, salt, etc.)

December 19 – can of fruit

December 20 – can of soup

December 21 – canned tuna or chicken

December 22 – snack item (granola bars, fruit cups, crackers, small packages of nuts, etc.)

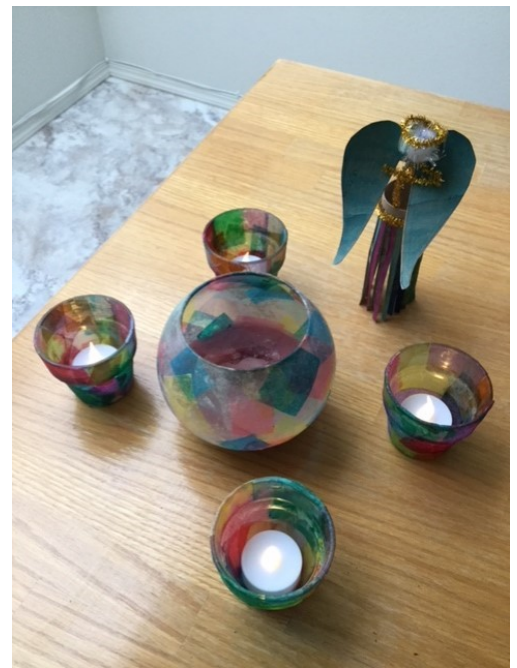
December 23 – roll of toilet paper

December 24 – baby item (food, wipes, formula, diapers, etc.)

**Drive-through drop off: 1 to 3 p.m. on Sunday, December 20
or contact office@glcwen.org for other arrangements.**

Grace Lutheran Advent Wreaths

More than 30 families received Advent Wreath kits in late November. We hope you are enjoying this Advent activity and the weekly devotionals. Thank you to the Zanol family for sharing this picture of their completed Advent wreath and Angel - they are beautiful! We'd love to see pictures of your Advent wreaths! Please send them to office@glcwen.org. If you would like a copy of the devotional book, please contact Jen at office@glcwen.org.



ANNA AND MIRIAM CIRCLES

Please stay tuned for information regarding future Anna Circle meetings once we are able to gather together.

Please contact Melanie McQuaig (melanie@mcqw.com or 509-665-9000) for more information about Miriam Circle.

DECEMBER BIRTHDAYS

Fern Keith	12/2	Michael Johnson	12/14	Jason Lake	12/27
Suellen Harris	12/3	Daryl Levine	12/14	Jan Lee	12/27
Shirley Leslie	12/5	Sylvia Hwang	12/16	Marv Dunbar	12/28
TJ McMahon	12/7	Dorothy Packard	12/16	Gavin Godfrey	12/28
Gary Nelson	12/8	Jim Fisher	12/19	Pat Strand	12/28
Dee Johnson	12/9	Hollie Olson	12/19	Brianne Vertrees	12/29
Carole Richardson	12/10	Steven Thompson	12/21	Austin Florea	12/30
Judy Conner	12/11	Tristan Cunderla	12/22	Dayne Russ	12/30
Bette Bayes	12/12	Paula Salter	12/22	Sonja Boersma	12/31
Gloria Foster	12/13	Noah Fenhaus	12/25	Jacob Didesch	12/31
Mark Woolsey	12/13	Sonya Westerman	12/25	Phillip Dormaier	12/31
Joyce Fisher	12/14				

Racial Justice Zoom

We are taking the month of December off due to the fact that ... it's December! We will be back on track January 3rd with a new speaker and some different insight. Please join us then. In the meantime, past discussions are available on our [YouTube channel](#). You will also find a link to our YouTube channel on the front page of our website glcwen.org under the "Most Recent Service" heading.

Virtual Worship

Facebook

Click [here](#) and watch for the "Facebook Premiere" which will show "live" on Sunday at 9:00 a.m. and remain on our page afterwards for viewing anytime.

Zoom

Grace Lutheran Sunday Worship (and coffee fellowship)

Time: 9:00 a.m., with fellowship following worship

To join Zoom on a computer/tablet/smartphone, click here:

<https://us02web.zoom.us/j/81304421918>

Meeting ID: 813 0442 1918

For connecting with a phone (audio only):

+1 669 900 6833 US

Meeting ID: 813 0442 1918

- When prompted, dial 813 0442 1918 #
- You may be asked to press # one more time
- That's it! You should be in after that.



Virtual Coffee Fellowship

Sign onto Zoom (following the instructions for worship) following worship for virtual coffee fellowship! Pour yourself a cozy beverage and call or sign in to meet and catch up with the Grace community. People will be randomly put into smaller virtual "rooms" for more intimate conversation. All are welcome!

SOCIAL CONCERNS TEAM

Funding Application Timeline: Applications for funding from the Social Concerns Team will be going out on December 15th. The areas of focus for 2021 will be Food Insecurities, Homelessness, Education and Health. Applications will be available on the church website, the church office, or you can email Kay Fisher at threefishers@nwi.net. Below is the timeline the Social Concerns Team adopted.

FUNDING



- December 15th applications start going out
- January 15th applications due
- March 2nd notify applicants

WHS Homeless Gift Cards Christmas:

In lieu of an advent tree this year, the Social Concerns Team will be collecting monies for the homeless students at Wenatchee High School. Checks can be written to Grace Lutheran Church with WHS Homeless Students in the memo line and mailed to the church. We hope to have a WHS T-shirt, a hat, and a couple of gift cards for each student. If you have any questions, please contact Kay Fisher at threefishers@nwi.net.



Gifts for Shut-ins: The Social Concerns Team will be delivering daily devotionals and a card to the homebound members of Grace this Christmas. Unfortunately, because of COVID we will not be able to visit with them. Please keep these individuals in your prayers.

Cold Weather Drive Final Numbers: This year's Make A Difference Day Cold Weather Drive was a huge success. We were able to collect and distribute 95 gloves, 62 pairs of socks, 209 hats, 400 hand warmers, 300 toe warmers, 75 sleeping bags, 20 pairs of snow pants, 27 boots, and several sweaters, pants, and scarves. We were also able to give boots, snow pants, and coats to 16 children at the Women's Resource Center. We would like to thank everyone for their contribution to this project.



TREASURER TALK:

HAPPY THANKSGIVING TO ALL. Well, we are TEN months into 2020.

	Jan-Oct 2019	Jan-Oct 2020	10 month 2020 Approved Budget	Variance To Date
Total Offerings, Misc.	\$407,797	\$316,648	\$429,167	(\$112,519)
Operating Expenses	<u>(422,258)</u>	<u>(386,235)</u>	<u>(446,848)</u>	<u>60,613</u>
Net Margin (Deficit)	(\$14,462)	(\$69,588)	(\$17,682)	(\$51,906)

Net loss has ultimately been funded through the PPP loan. Forgiveness application has been submitted, but at this point has not been forgiven. Below reflects the change to cash position.

	1/1/20	9/30/20
Cash Surplus Position	\$52,432	\$0
Treasurer Reserve	<u>44,500</u>	<u>27,341</u>
Total	\$96,932	\$27,341
SBA PPP Loan		<u>72,300</u>
Adjusted Cash Surplus		\$99,641

Council is beginning to put the 2021 budget together. Any thoughts/suggestions for the budget are openly welcome.

Gwen Sparks, Treasurer. 630-4239. Gwen101@nwi.net

Tune in for Our Weekly Virtual Gatherings

(on Facebook unless otherwise indicated)

Sunday

- ◆ Worship, 9:00 a.m. (also via Zoom, contact GLC office)
- ◆ Fellowship Time via Zoom, following worship
- ◆ Jr./Sr. High School Youth group, 6:30 p.m. (via Zoom, contact Beth)

Wednesday

- ◆ 10@10, 10:00 a.m.
- ◆ Lectionary Study (via Zoom, contact Pastor James), 11:00 a.m.

Friday

- ◆ 10@10, 10:00 a.m.

ELCA Good Gifts

**Are you still looking for gift ideas? Would you like to make a difference?
Consider ELCA Good Gifts!**

ELCA Good Gifts go beyond your regular congregational offering to support the ministries of the ELCA that mean the most to you and your loved ones. Together, we can do more than we ever could alone, making a huge collective impact on the needs of our church and the world.

Every project in every community starts with listening. We believe that our congregations, companion churches and partners know their communities best. That's why they identify the needs and priorities in their communities, as well as the solutions they believe will make the biggest impact.

The items in this catalog are real examples from projects currently supported through different churchwide ministries. The projects have been planned by our partners – meaning that each community receives exactly the kind of support they need and none of what they don't.

Visit www.elca.org/goodgifts. You can also give via phone: 800-638-3522. Choose the gifts that mean the most to you, or choose gifts to give in honor of friends and family. If your gift is in honor of a friend or loved one, it's easy to tell them about it!



Council Corner

1. Work on the sanctuary lighting project will begin in four to six weeks.
2. Council deliberated over the first draft of a 2021 budget proposal. They will have a Zoom "budget retreat" on December 15. Anticipating how things will be with Covid-19 in the new year is the most difficult problem.
3. Every member household is receiving a "stewardship" letter and pledge card this week. Please return your card in the self-addressed envelope provided. The information collected will help in the budgeting process.
4. Council thanks all who participated in our recent mail-in ballot election. We received over 120 returned ballots!

2020 TEAM & COMMITTEE LEADERS

Arts:	Phil Gregg
Building & Grounds:	Open
Endowment:	Karen Zanol
Faith Enrichment:	Jody Marquardt
Fellowship:	Shirley Leslie
Intern:	Andy Sheets Melanie McQuaig
Pastoral Support:	Micah Florea
Staff Support:	Ernie Bentsen
Social Concerns:	Kay Fisher
Worship:	Denise Miller
Youth:	Cheryl Salter

2020 CHURCH COUNCIL

President:	Chad DuLac
Vice President:	Cathy Sweeney
Treasurer:	Gwen Sparks
Secretary:	Jody Marquardt
Members-at-Large:	Riva Morgan Monte Olson Ann Bartlett Andy Sheets

PRAYERS OF GRACE

Please contact Colleen Smith with any prayer requests, either by phone at 679-1742 or by email at glcprayerpartners@gmail.com. We welcome all prayer requests.

George Aalgaard (Pastor Aalgaard's father) - *comfort and strength through a chronic health issue*

Della Brett - *overall health*

Patty Christensen - *thanks for healing and prayerful support*

Genevieve Crosby - *for help with problems with isolation*

Vera Curtis - *thanks for healing and recovery*

Eric DeJong - *recovery from cancer*

Marv Dunbar - *prayers for health*

Anne Erdmann

Don Evenhus - *continued prayers for health*

Chuck Graves - *recovery from recent surgical procedure*

Anna Guthrie - *support while in Indonesia*

Bonnie Howeler - *continued adaptation to visual impairment*

Gerri Kern - *continued health and peace of mind at this time of life*

Stephanie Olson - *peace and comfort*

Carol Sunada - *prayers for health*

Beatrice Tate - *for her daughter*

Wanda Rivedal - *prayers for patience and strength*

Ruthella Skagen - *peace as she begins hospice care*

Jackie Carmichael - *for comfort and strength with a chronic health issue*

Thelma Allen (Linda Luke's mom) - *prayers for health issues*

Tony Fisher - *for ongoing health issues*

Kay Fisher - *for recovery from surgery*

Gary Nelson - *prayers for healing*

Barbara Tilly - *prayers for healing*

Bob Curtis - *health support*

Dale Olson (Hollie Olson's father-in-law) - *prayers for health and peace*

Judy Olson - *recovery from knee replacement surgery*

Susan Salley - *beginning heart treatment for A-Fib*

Friends of Ann and Bob Bartlett whose newborn twin boys were born prematurely on September 3. *Prayers please for their continued growth and development and strength for the family.*

Vera Curtis - *recovering from a recent hospitalization*

Sarah Jones (Mary Henson's sister) - *prayers for healing as she undergoes treatment for cancer*

Friends and Family of Walter Brooks - *Walter died October 31 with covid-19*

Candy Davison - *diagnosed with covid-19*

Mort (Annette Mueller's father) - *in ICU with post-operative complications*

LECTIONARY READINGS

Sunday, December 6 Second Sunday of Advent

Isaiah 40:1-11
Psalm 85:1-2, 8-13
2 Peter 3:8-15a
Mark 1:1-8

Sunday, December 13 Third Sunday of Advent

Isaiah 61:1-4, 8-11
Psalm 126
1 Thessalonians 5:16-24
John 1:6-8, 19-28

Sunday, December 20 Fourth Sunday of Advent

2 Samuel 7:1-11, 16
Luke 1:46b-55
Romans 16:25-27
Luke 1:26-38

Sunday, December 27 First Sunday of Christmas

Isaiah 61:10--62:3
Psalm 148
Galatians 4:4-7
Luke 2:22-40

December 2020

Sunday	Monday	Tuesday	Wednesday	Thursday	Friday	Saturday
		1	2 10:00 a.m. 10@10 (Facebook) 11:00 a.m. Lectionary Study (Zoom)	3	4 10:00 a.m. 10@10 (Facebook)	5
6 9:00 a.m. Worship 10:30 a.m. PreK - 5 th Grade Faith Formation 6:30 p.m. Jr./Sr. High Youth Zoom Hangout	7	8 3:00 p.m. Staff Meeting	9 10:00 a.m. 10@10 (Facebook) 11:00 a.m. Lectionary Study (Zoom) 3:45 p.m. 3 rd - 5 th Grade Youth	10	11 10:00 a.m. 10@10 (Facebook)	12 4:00 p.m. Alumni Youth Zoom Hangout
13 9:00 a.m. Worship 10:30 a.m. PreK - 5 th Grade Faith Formation 6:30 p.m. Jr./Sr. High Youth Zoom Hangout	14	15 3:00 p.m. Staff Meeting 7:00 p.m. Miriam Circle	16 10:00 a.m. 10@10 (Facebook) 11:00 a.m. Lectionary Study (Zoom)	17	18 Newsletter Deadline 10:00 a.m. 10@10 (Facebook)	19
20 9:00 a.m. Worship 6:30 p.m. Jr./Sr. High Youth Zoom Hangout	21	22 3:00 p.m. Staff Meeting	23 10:00 a.m. 10@10 (Facebook)	24	25	26 4:00 p.m. Alumni Youth Zoom Hangout
27 9:00 a.m. Worship	28	29 6:00 p.m. Council	30	31		

GRACE LUTHERAN CHURCH
Evangelical Lutheran Church In America
1408 Washington Street
Wenatchee, WA 98801-2555
(509) 663-2189

Return Service Requested

GRACE LUTHERAN CHURCH STAFF

Pastor James Aalgaard Pastor
pastor@glcwen.org

Beth Smallbeck Minister of Youth & Family
youthandfamily@glcwen.org

Bergen Nelson Intern
intern@glcwen.org

Judy Olson Organist
olsonjm@nwi.net

Rich Smallbeck Facilities Maintenance Manager
rsmallbeck63@gmail.com

Jen Gale Office Administrator
office@glcwen.org

Roxanne Reindl Finance Manager
finance@glcwen.org

SUNDAY WORSHIP

9:00 a.m.

CHURCH OFFICE HOURS

As of this publication date, church offices are closed due to COVID-19. We are working from home and checking voicemail and email messages regularly. Please don't hesitate to contact us.

PHONE

(509) 663-2189

WEBSITE

www.glcwen.org