

# Former Kmart

3415 North Elizabeth Street

Pueblo \* Colorado



## \* Top retail trade area in Pueblo Colorado

- \* Hard Corner location with excellent exposure to the highest traffic intersection in the city.
- \* Aggressive sublease rate - will not demise
- \* 350 Surface parking stall 3.16/1,000 ratio

\* Total sq/ft 103,738sf

---

Demographics	1mile	3mile	5mile
Population	17,118	128,569	344,362
Median HH	\$65,945	\$55,747	\$56,932
Daytime Pop	10,797	108,262	293,562

\* Asking rent: Contact Broker

### Contact :

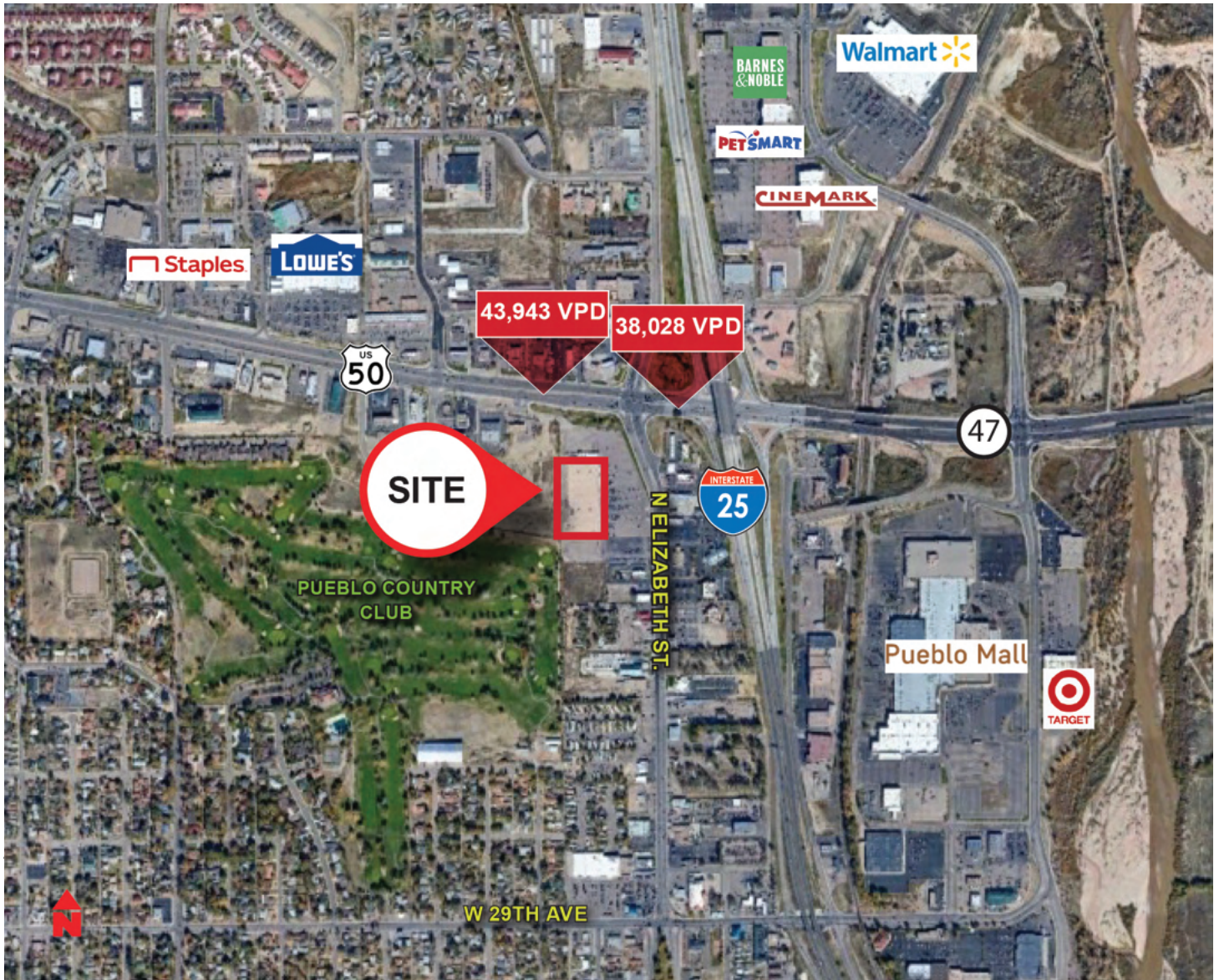
Mike Lindemann  
720.490.6806  
mike@cmcommercialpartners.com

Carolyn Martinez  
303.880.9766  
carolyn@cmcommercialpartners.com



# Former Kmart

3415 North Elizabeth Street  
 Pueblo \* Colorado



* Demographics	1mile	3mile	5mile
Population	8,426	52,942	91,754
Median HH	\$65,527	\$55,843	\$53,050
Daytime Pop	12,191	72,028	112,058

Contact:

## \* Traffic Counts:

US50 & N. Elizabeth (west) 43,943 vpd  
 US50 & N. Elizabeth (east) 38,028 vpd



Mike Lindemann  
 720.490.6806  
 mike@cmcommercialpartners.com

Carolyn Martinez  
 303.880.9766  
 carolyn@cmcommercialpartners.com