



Kyody Machining & Fabricating Ltd.

www.kyody.ca / email: info@kyody.ca

Cody Wheatley

Co-Owner/Shop Welder

Kyle Wheatley

Co-owner/Shop Machinist

In-Shop Services we provide:

Hydraulic cylinder repair:

- Re-tubes & Re-Rods – Seal land repair
- Manufacturing of Pistons & Glands –Cylinder Honing
- Cylinder Testing – Re-Sealing on Hydraulic cylinders

Line Boring

We have the ability to build-up / repair any worn out bores in many different applications

Machining

Manufacturing of Bushings, Pins, Pistons, Glands, re-tubes, Re-rods, and any custom project that you may have

Welding & Fabricating

Welding and Fabricating capabilities that include Steel & Aluminum Welding, Gouging & Crack repair, Equipment Fabrication & Repair, Small fabrication Projects



We offer quality Services at lower rates! Servicing the Forest, Mining, Snow Removal, landscaping, and heavy equipment industries. Please Visit Our Website for our rates sheet, and more information at www.kyody.ca

Kyody Machining & Fabricating Ltd.
Est.2019



Kyody Machining & Fabricating Ltd.

www.kyody.ca / email: info@kyody.ca

Cody Wheatley

Co-Owner/Shop Welder

Kyle Wheatley

Co-owner/Shop Machinist

On-Site Services we provide:

On-Site Heavy-Duty Mechanic

Removal & Repair of Cylinders, Pins, Bushings, Quick Attachments, Removal of equipment Parts & Components

Lifting (up to 3 tons)

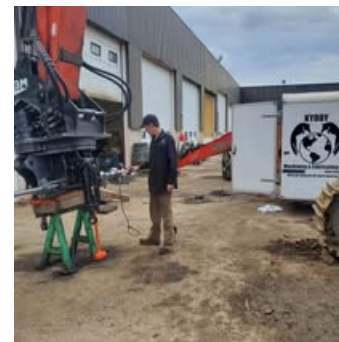
Knuckle boom with 3 ton lifting capabilities to help with on-site Heavy-Duty Mechanic, Welding, and Fabricating Services

Welding & Fabricating

On-Site Welding /Fabricating capabilities that include Steel & Aluminum Welding, Gouging & Crack repair, Equipment Fabrication & Repair

Portable Line Boring

Repair worn & sloppy bores on your equipment in order to ensure smooth and fluent operation



We offer quality Services at lower rates! Servicing the Forest, Mining, Snow Removal, landscaping, and heavy equipment industries. Please Visit Our Website for our rates sheet, and more information at www.kyody.ca

Kyody Machining & Fabricating Ltd.
Est.2019