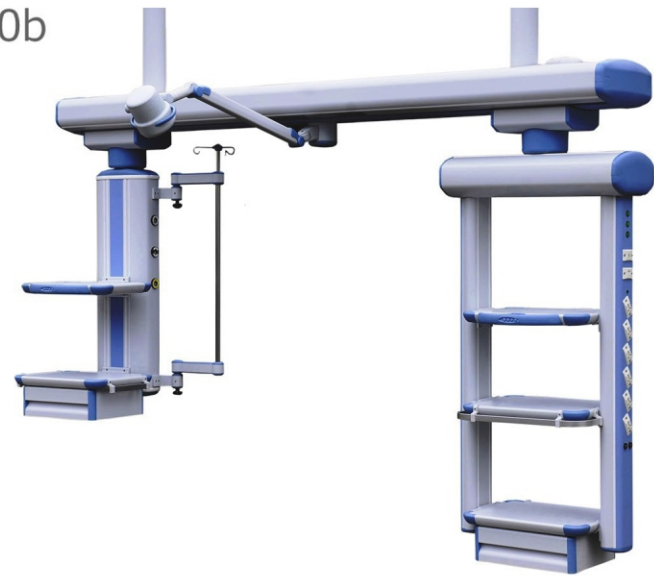


# MEDITEK® SonneMed

Perfekte Verbindung!  
Perfect connection

GERMAN Technology

Sonne Bridge 60b



Made from high-strength aluminum alloy with electrostatic epoxy powder coated with channeled supply chamber for gasses & electrical individually, whole sealed design. International Quality Directives such as ISO 9001:2008, International Medical Supply Unit EN ISO1197:2004, Applications: For ICUs, Critical Area, ER, OT (Anesthesia)

### Technical Description

Level Degrees Rotation	0 ~ 340°
Self Levelled, Non Drifting	No Requirement of configured pneumatic breaking system for controlling the pendant
Net Loading capacity	120-180 Kg
Rated Voltage	220V, Rated Frequency: 50HZ;
Input Power	5 Amp
Fitted with	- 1 no of Working Platform (Height Adjustable), additional can be ordered, have provision to accommodate upto 2 units - Control Handled drawer: 1no Round Angle Design for Prevention of Collision

### Technical Description

Level Degrees Rotation	0 ~ 340°
Self Levelled, Non Drifting	No Requirement of configured pneumatic breaking system for controlling the pendant
Net Loading capacity	120-180 Kg
Rated Voltage	220V, Rated Frequency: 50HZ;
Input Power	5 Amp
Fitted with	- 4 no of Working Platform (Height Adjustable), additional can be ordered. - Control Handled drawer: 1no Round Angle Design for Prevention of Collision

### Medical Gas Outlets (DIN Type)

Oxygen	2nos	RJ45	1 no
Vacuum	2 nos	Stainless steel I.V.	1 Set
Medical Air	1 no	Optional	Examination
Power socket	10pcs, 220V, 10A		Light Medical Air 7 bar CO2 outlet
Grounding terminal	2 nos		App. Weight 130kg

Oxygen	2nos	Grounding	2 nos
Vacuum	2 nos	terminal	
Medical Air	1 no (optional)	RJ45	1 no
Power socket	6pcs, 220V, 10A	Stainless steel I.V.	1 Set
		App. Weight	130kg



#Smart Solutions... since 1953!

**Srishty Medical Private Limited**

A 219  
Road No.6  
Mahipalpur NH-8  
New Delhi-110037 INDIA

www.sonneded.de info@sonneded.de  
www.sngindia.org  
info@sngindia.org  
+91 98100 07700  
Toll Free No. 1800 309 7909



# www.sngindia.org



- Delhi
- Mumbai
- Chennai
- Kolkata
- Bengaluru
- Hyderabad
- Pune
- Amdavad
- Coimbatore
- Vishakhapatnam
- Manipal
- Kochi
- Katmandu
- Colombo
- Dhaka



#Smart Solutions... since 1953!

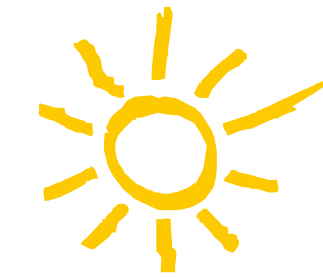
**Srishty Medical Private Limited**

A 219  
Road No.6  
Mahipalpur NH-8  
New Delhi-110037 INDIA

www.sngindia.org  
info@sngindia.org  
+91 98100 07700  
Toll Free No. 1800 309 7909



© Copyrights reserved 2024. Duplication or circulation of this catalog is restricted and prohibited. Brands, makes, models, designs, representation, specifications, drawing, features & photographs are exclusive and sole proprietary of SNG and its associates / members, and are subject to change / amendment without any prior announcements with exclusive and sole discretion of SNG & its associates/ members. All specifications are approximate, tolerances must be considered. All photos are representative only and all accessories & finishes as shown may not be part of standard supply & design.

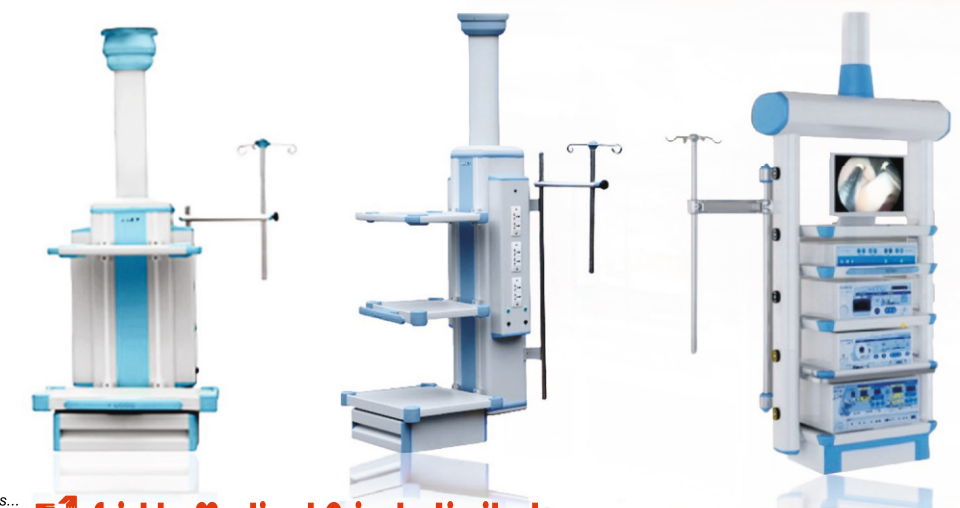


# MEDITEK® SonneMed

Perfekte Verbindung!  
Perfect connection

GERMAN Technology

## CEILING SUPPLY PENDANTS



#Smart Solutions... since 1953!

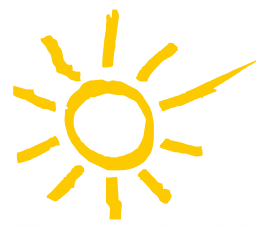
**Srishty Medical Private Limited**

A 219  
Road No.6  
Mahipalpur NH-8  
New Delhi-110037 INDIA

www.sonneded.de info@sonneded.de  
www.sngindia.org  
info@sngindia.org  
+91 98100 07700  
Toll Free No. 1800 309 7909







# MEDITEK® SonneMed

Perfekte Verbindung!  
Perfect connection

GERMAN Technology

## Sonne AC10 Drop Down Anesthesia Pendant

Made from high-strength aluminum alloy with electrostatic epoxy powder coated with channeled supply chamber for gasses & electrical individually, whole sealed design.

International Quality Directives such as ISO 9001:2008

International Medical Supply Unit EN ISO11197:2004

Applications : For ICUs, Critical Areas, ER, OT (Anesthesia)



### Technical Description

Level Degrees Rotation  
Self Leveled, Non Drifting

0 ~ 340°

No Requirement of configured pneumatic breaking system for controlling the pendant

Net Loading capacity  
Rated Voltage  
Input Power  
Fitted with

120-180 Kg

220V, Rated Frequency:50HZ;

5 Amp

- 1 no of Working Platform (Height Adjustable), additional can be ordered, have provision to accommodate upto 2 units
- Control Handled drawer: 1no Round Angle Design for Prevention of Collision

### Medical Gas Outlets (DIN Type)

Oxygen	2 nos
Nitrous	1 no
Vacuum	2 nos
Medical Air	1 no
Power socket	6pcs, 220V, 10A;
Grounding terminal	2 nos

Stainless steel I.V.	1 Set
Optional	Examination light
	AGSS Outlet
	RJ45 outlet

App. Weight	130kg
-------------	-------

## Sonne AC20 Anesthesia Single Arm Pendant

Made from high-strength aluminum alloy with electrostatic epoxy powder coated with channeled supply chamber for gasses & electrical individually, whole sealed design

International Quality Directives such as ISO 9001:2008

International Medical Supply Unit EN ISO11197:2004

Applications: For ICUs, Critical Area, ER, OT (Anesthesia)



### Technical Description

Single Arm  
Level Degrees Rotation:  
Self Leveled, Non Drifting,

1500 mm

0~340°

No Requirement of configured pneumatic breaking system for controlling the pendant

Net Loading capacity :  
Rated Voltage:  
Input Power:  
Fitted with

120- 180 Kg

220V, Rated Frequency:50HZ;

5 Amp

- 1 no of Working Platform (Height Adjustable), additional can be ordered, have provision upto 2 units
- Control Handled drawer: 1no Round Angle Design for Prevention of Collision

### Medical Gas Outlets (DIN Type)

Oxygen	2 nos
Nitrous	2 no
Vacuum	2 nos
Medical Air	1 no (Optional)
Power socket	6pcs, 220V, 10A;
Grounding terminal	2 nos

Stainless steel I.V.	1 Set
Optional	Examination light
	AGSS Outlet
	RJ45 outlet

App. Weight	150kg/180kg
-------------	-------------

All specifications, models, versions shown are indicative, representative & approximate, and are subject to change without any prior notice with exclusive discretion of the company.



# MEDITEK® SonneMed

Perfekte Verbindung!  
Perfect connection

GERMAN Technology

## Sonne SC10 Surgical Drop Down Pendant

Made from high-strength aluminum alloy with electrostatic epoxy powder coated with channeled supply chamber for gasses & electrical individually, whole sealed design.

International Quality Directives such as ISO 9001:2008,

International Medical Supply Unit EN ISO11197:2004

Applications: For OT (Surgical), Endoscopy



### Technical Description

Level Degrees Rotation  
Self Leveled, Non Drifting

0 ~ 340°

No Requirement of configured pneumatic breaking system for controlling the pendant

Net Loading capacity  
Rated Voltage  
Input Power  
Fitted with

120-180 Kg

220V, Rated Frequency:50HZ;

5 Amp

- 4 no of Working Platform (Height Adjustable), additional can be ordered
- Control Handled drawer: 1no Round Angle Design for Prevention of Collision

### Medical Gas Outlets (DIN Type)

Oxygen	2 nos
Vacuum	2 nos
Medical Air	1 no
Power socket	10pcs, 220V, 10A;
Grounding terminal	2 nos

Stainless steel I.V.	1 Set
Optional	Examination light
	Medical Air 7 bar
	CO2 Outlet

App. Weight	130kg
-------------	-------

## Sonne SC20 Surgical Single Arm Pendant

Made from high-strength aluminum alloy with electrostatic epoxy powder coated with channeled supply chamber for gasses & electrical individually, whole sealed design

International Quality Directives such as ISO 9001:2008,

International Medical Supply Unit EN ISO11197:2004

Applications: For OT , Endoscopy



### Technical Description

Single Arm  
Level Degrees Rotation:  
Self Leveled, Non Drifting,

1500 mm

0~340°

No Requirement of configured pneumatic breaking system for controlling the pendant

Net Loading capacity :  
Rated Voltage:  
Input Power:  
Fitted with

120- 180 Kg

220V, Rated Frequency:50HZ;

5 Amp

- 4 no of Working Platform (Height Adjustable), additional can be ordered
- Control Handled drawer: 1no Round Angle Design for Prevention of Collision

### Medical Gas Outlets (DIN Type)

Oxygen	2 nos
Vacuum	2 nos
Medical Air 4 bar	1 no
Power socket	10pcs, 220V, 10A;
Grounding terminal	2 nos
Stainless steel I.V.	1 Set

Optional	Examination light
	Medical Air 7 bar; 1 no
	CO2 Outlet
	Double Arm available

App. Weight	150kg/180kg
-------------	-------------

All specifications, models, versions shown are indicative, representative & approximate, and are subject to change without any prior notice with exclusive discretion of the company.



# MEDITEK® SonneMed

Perfekte Verbindung!  
Perfect connection

GERMAN Technology

## Sonne IC10 ICU / CRITICAL CARE PENDANT Ultra Slim Version

Made from high-strength aluminum alloy with electrostatic epoxy powder coated with channeled supply chamber for gasses & electrical individually, whole sealed design

International Quality Directives such as ISO 9001:2008

International Medical Supply Unit EN ISO11197:2004

Applications: For ICUs, Critical Area, ER, OT (Anesthesia)



### Technical Description

Level Degrees Rotation  
Self Leveled, Non Drifting

0 ~ 340°

No Requirement of configured pneumatic breaking system

Net Loading capacity  
Rated Voltage  
Input Power  
Fitted with

60 Kg

220V, Rated Frequency:50HZ;

5 Amp

1 side IV Pole

### Medical Gas Outlets (DIN Type)

Oxygen	2 nos
Vacuum	2 nos
Medical Air	1 no
Power socket	6pcs, 220V,
App. Weight	60kg
Grounding terminal	2 nos
Optional	Universal Monitor Arm Bracket

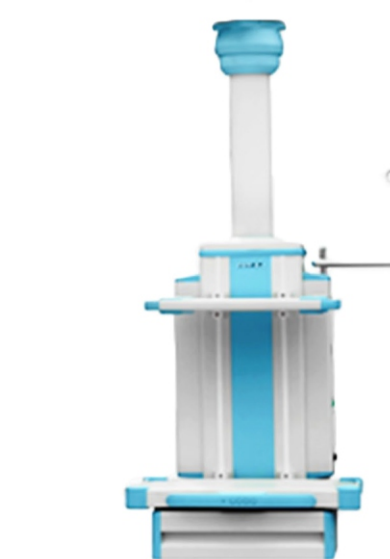
## Sonne IC20 ICU / CRITICAL CARE PENDANT Drop Down Version

Made from high-strength aluminum alloy with electrostatic epoxy powder coated with channeled supply chamber for gasses & electrical individually, whole sealed design

International Quality Directives such as ISO 9001:2008

International Medical Supply Unit EN ISO11197:2004

Applications: For ICUs, Critical Area, ER, OT (Anesthesia)



### Technical Description

Level Degrees Rotation  
Self Leveled, Non Drifting

0 ~ 340°

No Requirement of configured pneumatic breaking system

Net Loading capacity  
Rated Voltage  
Input Power  
Fitted with

100 ~ 180Kg

220V, Rated Frequency:50HZ;

5 Amp

1 no of Working Platform (Height Adjustable), Additional can be ordered, have provision upto 2

Control Handled drawer: 1no Round Angle Design for Prevention of Collision

### Medical Gas Outlets (DIN Type)

Oxygen	2 nos	Grounding	2 nos
Nitrous	1 no	terminal	
Vacuum	2 nos	Optional	Examination light
Medical Air	1 no	RJ 45	1 no
Power socket	6pcs, 220V,	App. Weight	100 kg

All specifications, models, versions shown are indicative, representative & approximate, and are subject to change without any prior notice with exclusive discretion of the company.

