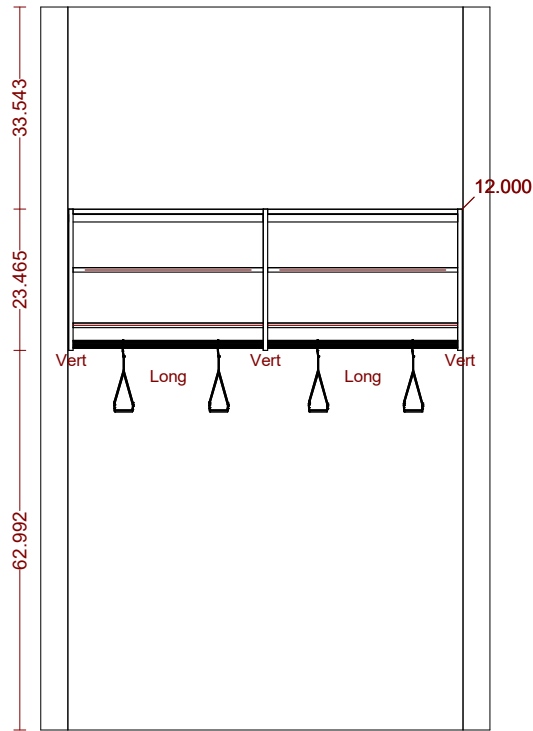


Carolina Closets

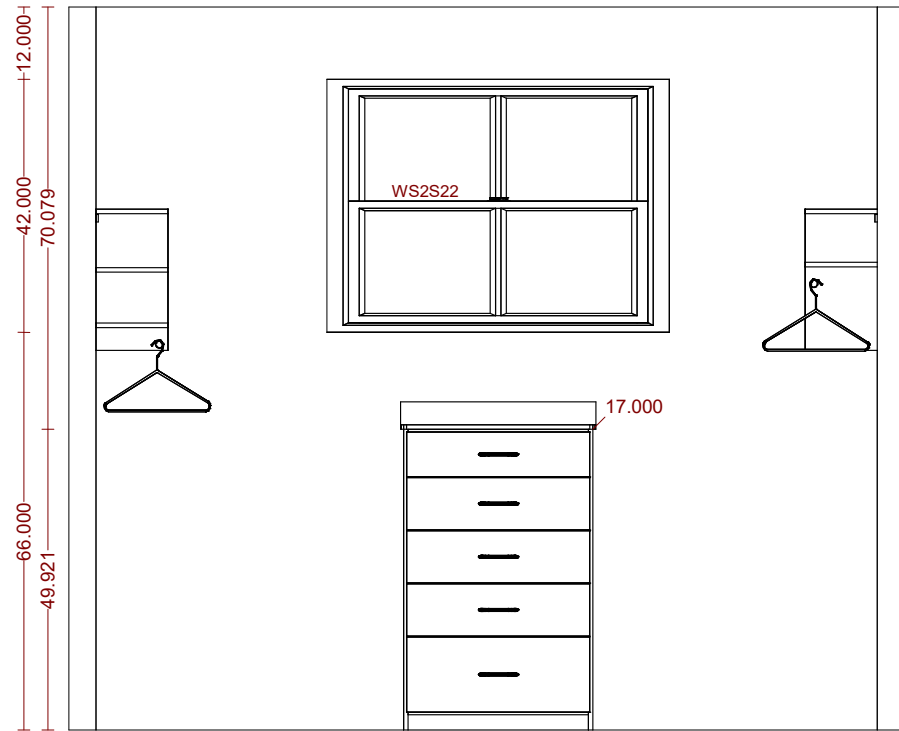
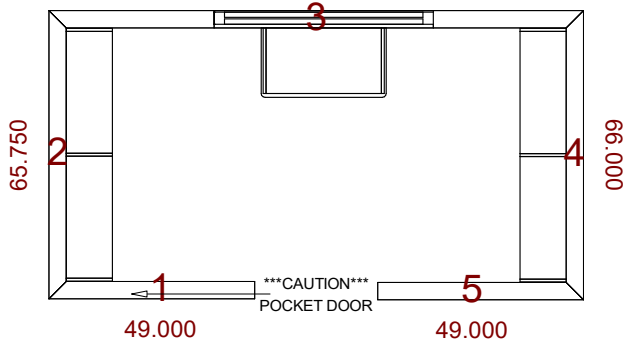
REVISIONS: 2
Apr 19 2022 - Page 1 of 7
CV11.00_CC07.03.01

Horvath - American Eagle

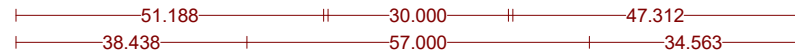
Jim Scruggs / VH :REP / CAD
:COMMENTS



2



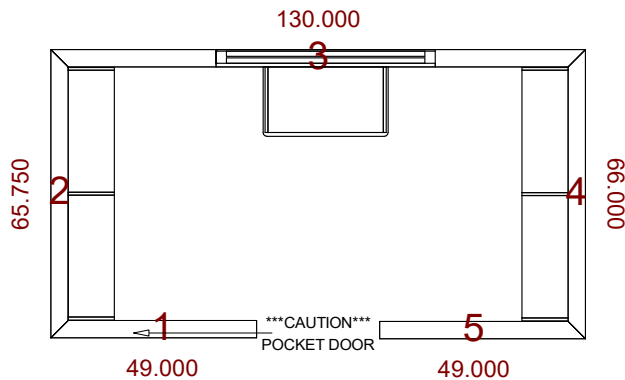
3



CLOSET 1

- Master 1

- base board (hxd) - 7.375 x 0.750
- shoe molding (r) - 0.000
- panel color - White
- rod style - Round Matte Black
- knob style - Brenton Pull - Matte Black
- drawer face style - Flat Drawer
- drawer face color - FLAT-DWR-White
- drawer box style - Dovetail Maple-Drawer
- drawer box mat - Dovetail Maple
- top color - 3/4" White



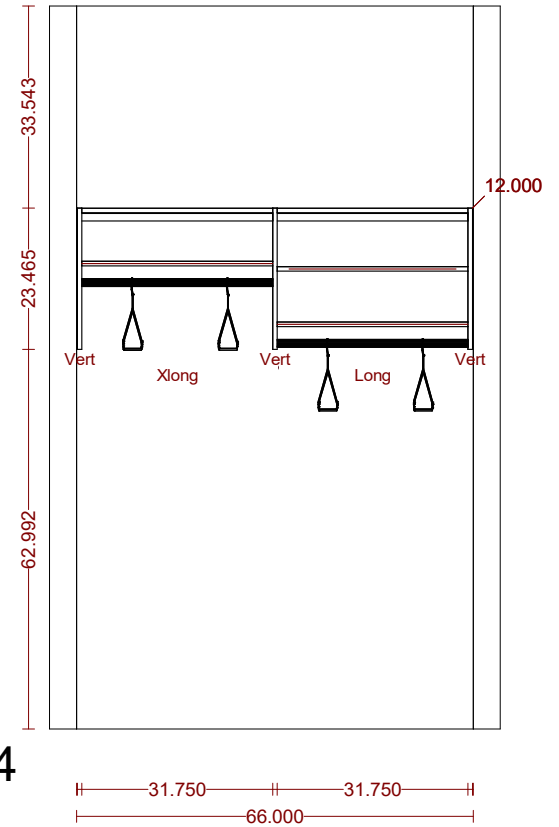
CLOSET 1

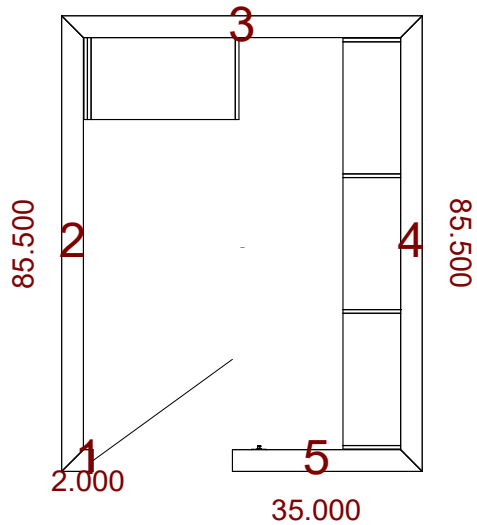
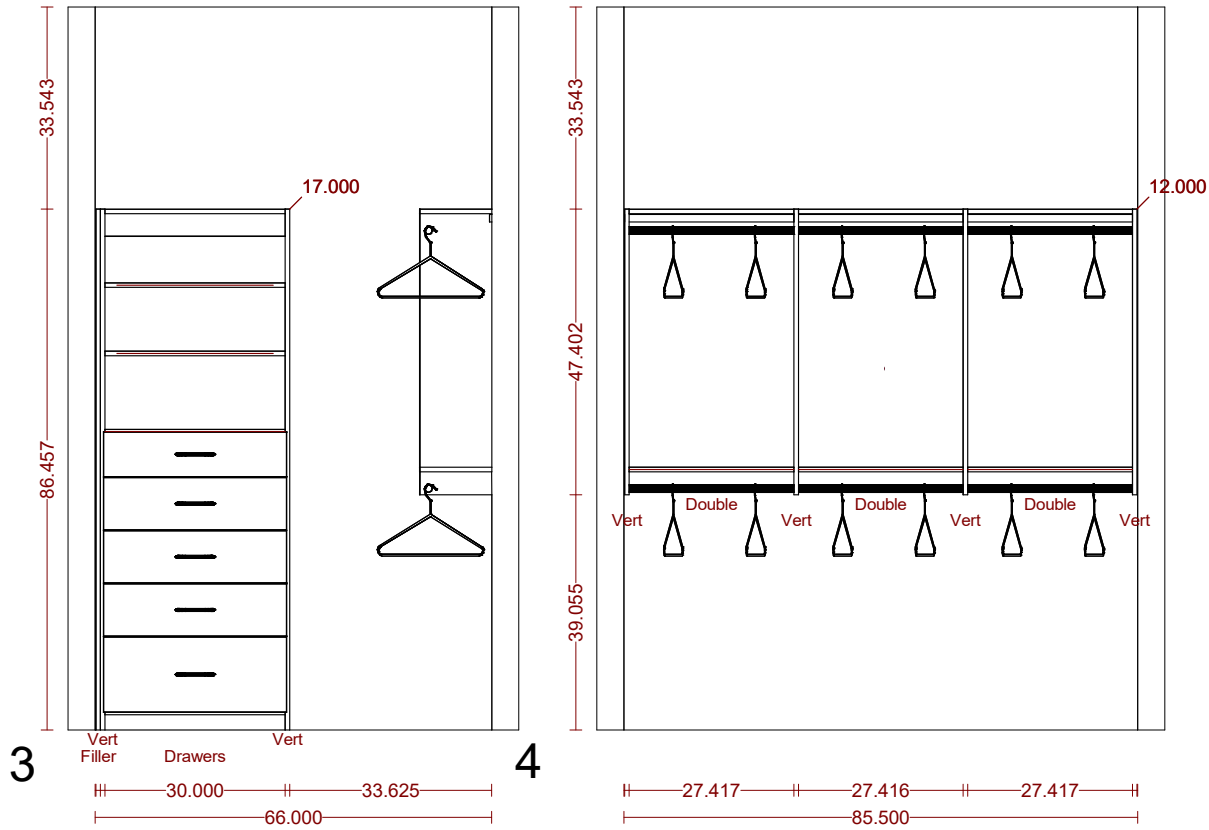
- base board (hxd)
- shoe molding (r)
- panel color
- rod style
- knob style
- drawer face style
- drawer face color
- drawer box style
- drawer box mat - Dovetail Maple
- top color

- Master 1

- 7.375 x 0.750
- 0.000
- White
- Round Matte Black
- Brenton Pull - Matte Black
- Flat Drawer
- FLAT-DWR-White
- Dovetail Maple-Drawer
- 3/4" White

4





CLOSET 2

- Master 2

base board (hxd)

- 7.375 x 0.750

shoe molding (r)

- 0.000

panel color

- White

rod style

- Round Matte Black

knob style

- Brenton Pull - Matte Black

drawer face style

- Flat Drawer

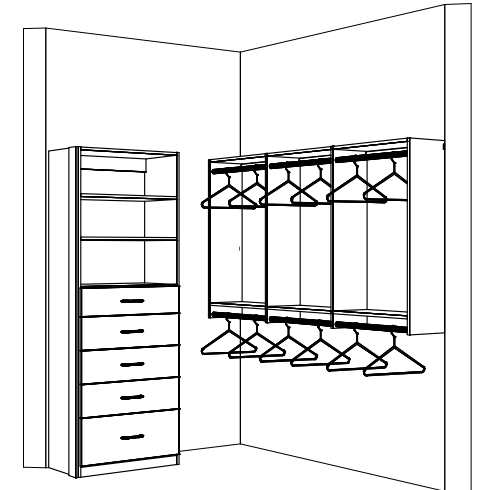
drawer face color

- FLAT-DWR-White

drawer box style

- Dovetail Maple-Drawer

drawer box mat - Dovetail Maple



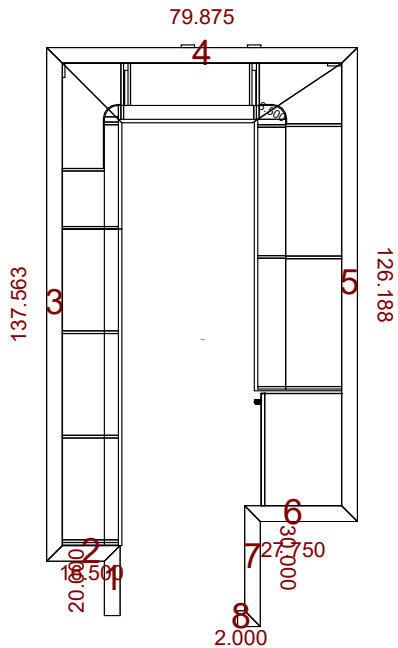


Carolina Closets

REVISIONS: 2
Apr 19 2022 - Page 5 of 7
CV11.00_CC07.03.01

Horvath - American Eagle

Jim Scruggs / VH :REP / CAD
:COMMENTS

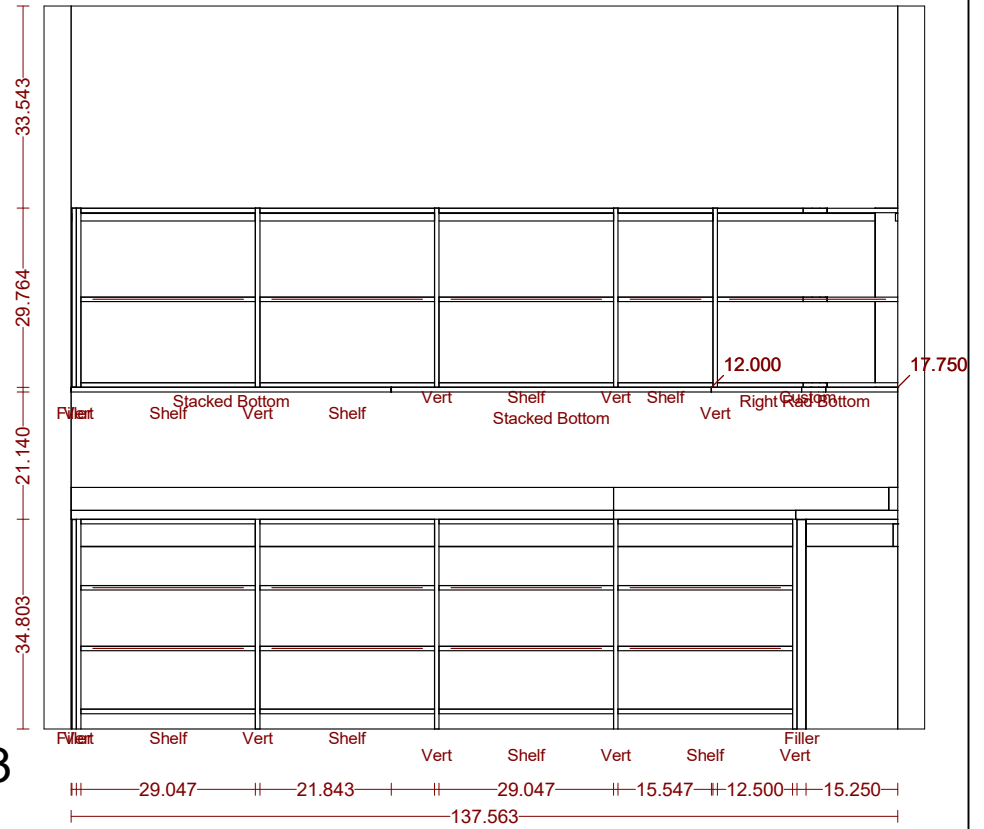


CLOSET 3

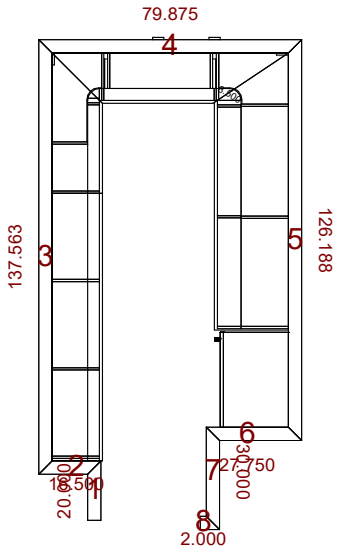
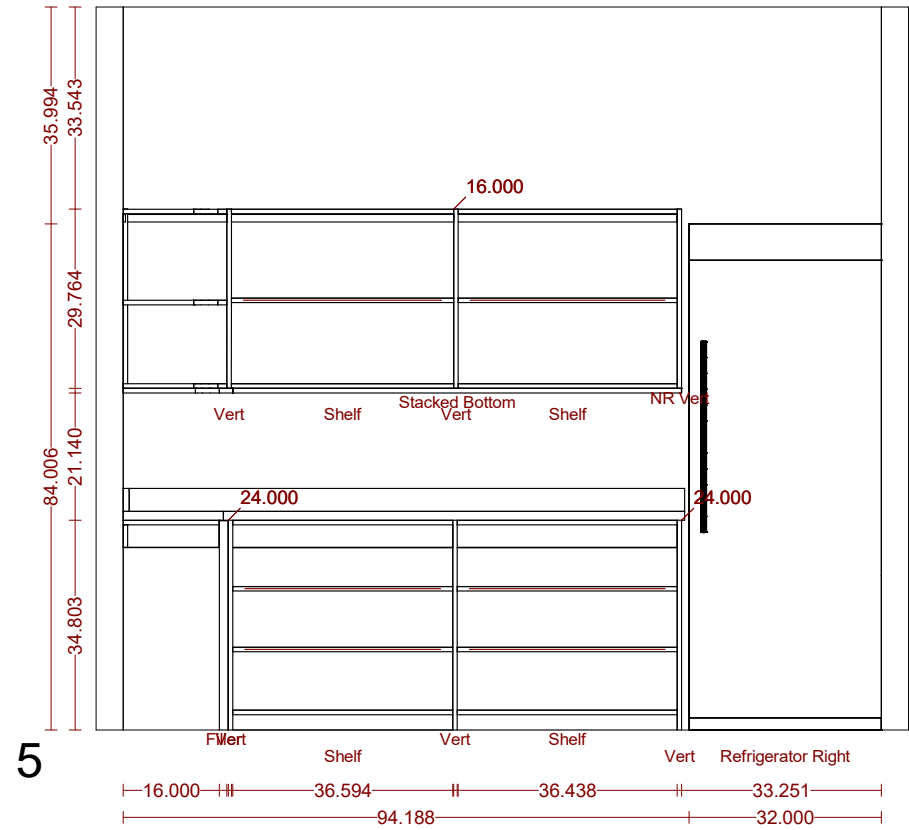
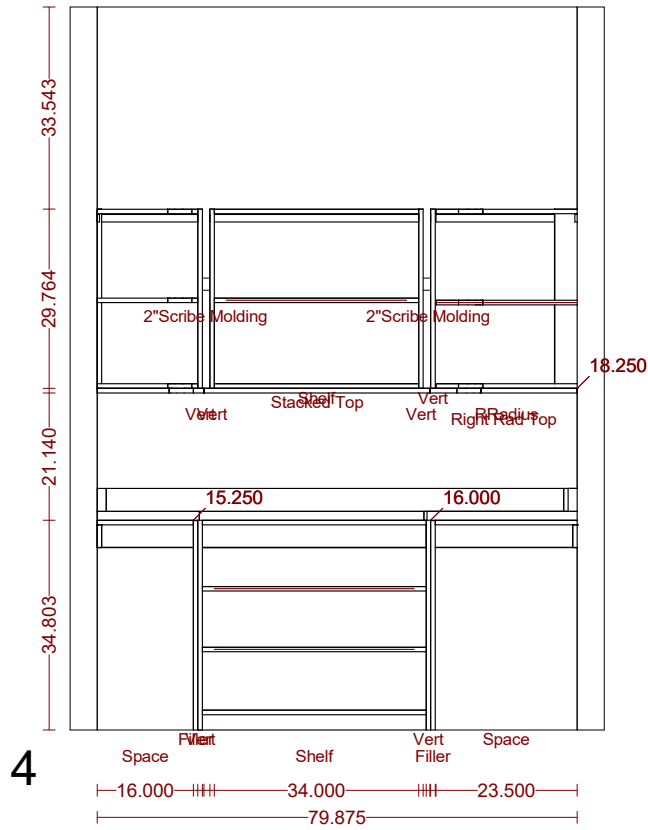
base board (hxd)
 shoe molding (r)
 panel color
 top color

- Pantry

- 7.375 x 0.750
- 0.000
- Phantom Ecru
- BUTCHER BLOCK



3



- CLOSET 3** - Pantry
- base board (hxd) - 7.375 x 0.750
 - shoe molding (r) - 0.000
 - panel color - Phantom Ecru
 - top color - BUTCHER BLOCK

Carolina Closets

REVISIONS: 2
 Apr 19 2022 - Page 7 of 7
 CV11.00_CC07.03.01

Horvath - American Eagle

Jim Scruggs / VH :REP / CAD
 :COMMENTS