



THE COASTAL NC DAYLILY SOCIETY

NEWSLETTER

MAY 2020

No. 103

PRESIDENT'S CORNER - Greetings All!

Spring has arrived and the last killing frosts are behind us. It's officially planting season! Whooo Hoooo! I love walking out and discovering new scapes because that means in just a few short weeks, we'll have blooms again.

We have not met in a while for a full club meeting due to the restrictions from Covid-19. We have decided to hold a meeting on May 20th at 10 am at Janet Hong's house. If you feel comfortable in coming please do. Janet has an absolutely beautiful garden - this will be a real treat! [See the details on the next page] We will have our usual "Show and Tell" where members can talk about what is going on in their garden and discuss problems/solutions and any exciting additions this year. If you have blooms, bring a few to show, either on or off scape. We would love to see your flowers.

Last Fall we voted to purchase Azoxystrobin, the fungicide that is used to combat Daylily rust. It is expensive and most of us only need a small amount to protect our daylilies from rust, and do not need to purchase a whole container. We will have it available in ounce size packages at the meeting. As agreed, any club member who wants some will reimburse the club for however many ounces they get.

The main purpose of the meeting will be to bring everyone up to date on plans and actions taken to date for the OBX Autumn 2020 – Division 15 Fall Regional meeting. Ken has been working diligently to make sure that every detail of the event has been worked out, tested and made ready. Because of Ken's consistent work and coordination of all facets of the Regional, from the tiniest details to the big pictures, we are in a great position to put on a production that people in Region 15 and beyond will talk about for a LONG time.

While we will look forward to seeing you at Janet's, if you feel uncomfortable about coming out just now, we will all understand. It is fine. Our main concern is that everyone stays safe.

See you all soon, Pat



HONG GARDEN DETAILS

May 20th, 10A, in Janet Hong's daylily garden: 2605 Pine Forest Lane, Chesapeake, VA 23322
757.297.8681

And there is a good chance that there will be daylilies **IN BLOOM**. Janet also sells daylilies, so you may find something that you would like to take home with you for your garden! Janet and John's home is generous in size, so we will be able to maintain "social distancing". As you may know, Janet is a distinguished painter. She is currently working on a new one featuring a cardinal, surrounded by daylilies – Perhaps she will let us peek at her work in progress!



GOOD NEWS

The Outer Banks OPEN May 16th.



MORE GOOD NEWS

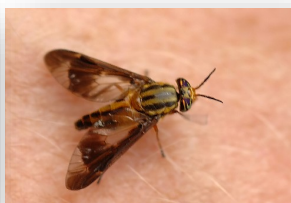
We have the opportunity to ADD one day to OBX 2020 [Thursday, October 8th], with an optional all-day tour of Linda Pinkham's daylily farm and residential garden in Carrollton, VA. This will be dependent on the response from the membership of Region 15.



THEY'RE BACK! Stay situationally AWARE



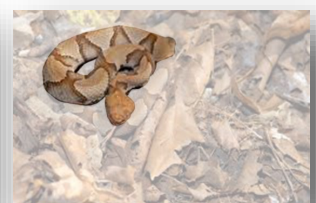
Ticks



Deer Flies

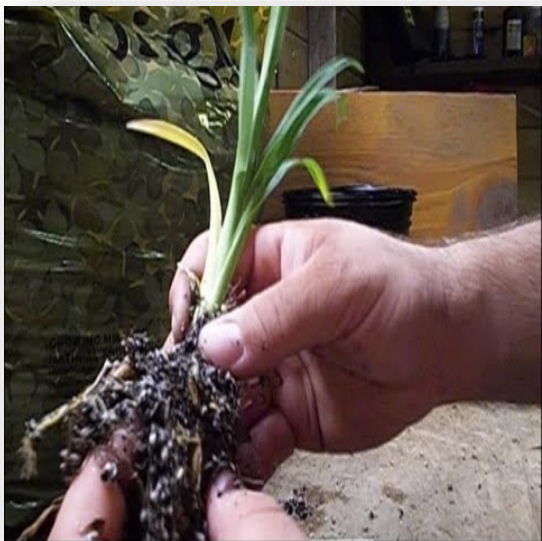


Copperheads



Homebrewed Solutions & Wisdom

by Ken Ferguson

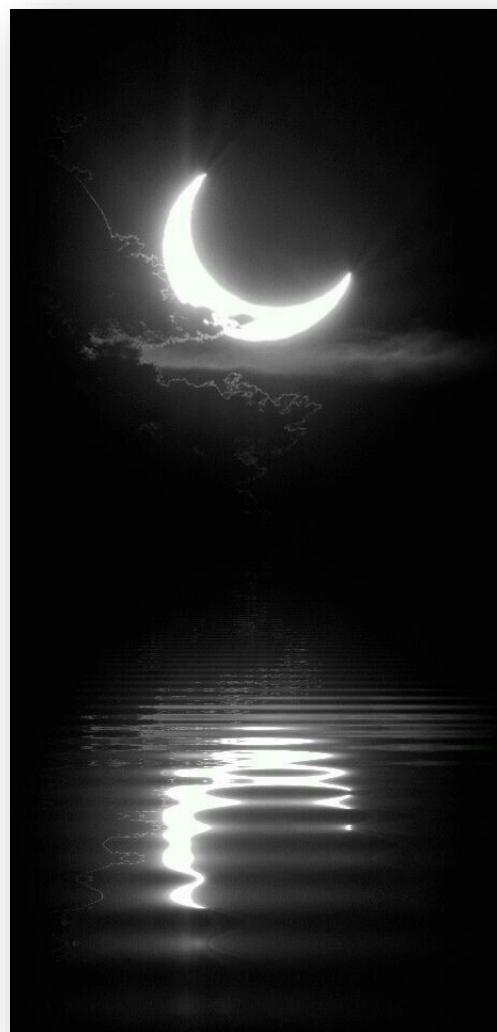


If there is a "no-brainer" perennial, it's the daylily. They thrive in USDA Plant Hardiness Zones 3 to 9, tolerate a wide variety of soil conditions, are minimally troubled by diseases or pests, and bloom faithfully for years with virtually no attention. But, just like any other plant, the better the care you provide, the better your daylilies will perform. The following is designed to help you better understand daylilies and their needs. Some suggested solutions in most cases are common, inexpensive household products.

The MOON

But before I start on some chemistry lessons, call me old-fashioned, but all of these newfangled ways of figuring out when to plant your vegetable garden seems to be making old wisdom sound like a new thing. My mother, a half century ago taught me about planting by the phases of the Moon. This obviously isn't anything new. Gardeners and farmers have been doing it for ages. Best of all, it's a fairly simple process.

- ✿ Plant your annual flowers and vegetables that bear crops above ground during the light, or waxing of the Moon ... from the day the Moon is new to the day it is full.
- ✿ Plant flowering bulbs, biennial and **perennial flowers**, and vegetables that bear crops below ground during the dark, or waning, of the Moon ... from the day after it is full to the day before it is new again.
- ✿ What does this old wisdom mean to us? The moon starts to wane on May 20th, for the next 16 days. Go online if you need info for June and beyond.



If you are actually reading this Newsletter, here is a bonus for someone. If you know the **singular** word that describes the reflection on the water in the graphic for moon phases [see orange arrow], I will give you a fan of Shari Dee, my only registered daylily. The first email with the correct answer wins. kferguson@mchsi.com Ed Cabaniss is not eligible.

SOIL

Success in the garden starts with the soil. It, as much as—and sometimes more than—moisture and sunlight, determines whether plants thrive or die. Here are a few quick and easy ways to test your soil. Soil needs to be able to provide nutrients to plants, and allow plants to take up the nutrients in the soil. Otherwise, your plants just won't grow well.

METHOD #1

Daylilies will grow in a fairly wide soil pH range, but the best results will be obtained if it is either neutral or slightly acidic. A soil test should always be conducted BEFORE amending any flower beds with sulfur or lime. Daylilies will also grow in most soil types, but like most other plants, they prefer a soil that is neither too hard nor too sandy. In extremely poor soils or in light or sandy soils which tend to leach badly, more frequent amendments may be required.

To determine the precise nutrient needs of your garden, contact your local North Carolina Cooperative Extension Service Office for more information on how to take soil samples and have them analyzed.



NOTE: Because of COVID-19, Extension Offices have been closed for several weeks now. The backlog of soil samples to be tested may delay you getting results in a timely manner, after the labs reopen.

METHOD #2

THE PEANUT BUTTER JAR SOIL TEST FOR SAND, SILT, AND CLAY



This should take about 1 hour to set up and a full day to conclude. Find an empty straight-sided jar, such as a peanut butter or mason jar, with a lid, and have a ruler handy. Dig down to root level—about 6 inches—in the area that you want to test and remove enough soil to fill the the jar to between one-third and one-half full. Next, fill the jar to the shoulder with water, then set the jar aside to let the soil soak up the water. Put the lid on the jar and shake it hard for about 3 minutes.

Set the jar down and look at your watch. In 1 minute, measure (with the ruler) the amount of sediment that has collected at the bottom. This is the sand in your soil.

Wait 4 minutes more. Measure the sediment again: The difference between the two numbers will be the amount of silt in your soil.

Take a third measurement in 24 hours. The difference between the second and third number will be the amount of clay in your soil. Calculate the percentages of sand, silt, and clay, which should add up to 100 percent. Healthy soil typically consists of 20 percent clay, 40 percent silt, and 40 percent sand.

This simple test can help you to decide what to grow: If your soil is high in sand, it will be well-draining. Silt and clay are hard to get wet, but they stay wet; plants that like “wet feet” would be happy here. Choose your plants accordingly and/or amend the soil:

IF YOU HAVE SANDY SOIL, add humus or aged manure, peat moss, or sawdust with some extra nitrogen. Heavy, clay-rich soil can also be added to improve the soil.

IF YOU HAVE SILTY SOIL, add coarse sand (not beach sand) or gravel and compost, or well-rotted horse manure mixed with fresh straw.

IF YOU HAVE CLAY SOIL, add coarse sand (not beach sand), compost, and peat moss.



THE PANTRY pH TEST FOR SOIL ACIDITY OR ALKALINITY

1. Place 2 tablespoons of soil in a bowl and add ½ cup vinegar. If the mixture fizzes, you have alkaline soil.
2. Place 2 tablespoons of soil in a bowl and moisten it with distilled water. Add ½ cup baking soda. If the mixture fizzes, you have acidic soil.

- If it does not react to either test, the soil has a neutral pH.
- A very high or very low soil pH may result in plant nutrient deficiency or toxicity.
- A pH value of 7 is neutral; microbial activity is greatest and plant roots absorb/access nutrients best when the pH is in the 5.5 to 7 range.

Once you figure out your soil pH, you can change or adjust it. Acidic (sour) soil is counteracted by applying finely ground limestone, and alkaline (sweet) soil is treated with ground sulfur.

THE EARTHWORM TEST TO GAUGE ORGANIC MATTER

The best time to check for earthworms is in the spring when the soil’s temperature has reached 50°F and its surface is moist. Use a shovel to dig up about 1 cubic foot of soil.



Put the soil on a piece of cardboard, break it apart, and look for earthworms. If your soil is healthy, you'll find at least 10 earthworms!

If your soil has fewer than 10 worms, add more organic matter—compost, aged manure, leaf mold. Organic matter improves structure, slowly releases nutrients, and increases beneficial microbial activity.

NEXT MONTH

MORE Homebrewed Solutions & Wisdom



Prophylactics - sounds nasty, but not Feeding... *"Big Box"* method
Feeding... DIY method
Modified Hooker's Formula
Bare Root Recovery Booster
First-year Seedling Bloom Potion

REGION 15 SUMMER MEETING

CANCELLED

ADS NATIONAL CONVENTION

CANCELLED

REGION 15 FALL MEETING

OBX AUTUMN 2020 IS STILL A GO

RESERVE YOUR ROOM NOW

We've booked a block of rooms at the Comfort Inn On the Ocean, Kill Devil Hills, NC. Please note rooms need to be booked by the cutoff date of Friday, Sep 11, 2020 or they'll be released to the general public. Reserve your room online or call the hotel directly.

Group Name: American Daylily Society Region 15

Group Code: WD87H3

Check In: Friday, Oct 9, 2020 (4:00 PM)

Comfort Inn On the Ocean, 1601 S. Virginia Dare Trail

Kill Devil Hills, NC, US, 27948 252.441.6333

