

# Federated Philatelist

Newsletter of the Northwest Federation of Stamp Clubs

No. 208, September 2014

## PIPEX MOU Review

— by Lawrence Clay

In 2012, a Memorandum of Understanding (MOU) was signed by the Portland Philatelic Exhibitions (PPE), the Oregon Stamp Society (OSS), and the Northwest Federation of Stamp Clubs (NWFSC) authorizing the PPE to mount the annual Pacific International Philatelic Exhibition (PIPEX) stamp show in Portland, Oregon, in 2013, 2014, and 2015, on behalf of OSS and NWFSC. PIPEX is one of the American Philatelic Society's (APS) World Series of Philately (WSP) events. It was agreed that the arrangements specified in the MOU would be reviewed during 2014, after PIPEX 2014, but in sufficient time to incorporate changes for PIPEX 2015.

An initial review of the MOU resulted in all three parties agreeing that the existing MOU would be applicable through PIPEX 2015.

The NWFSC requested a bye from the APS for conducting the show in 2016, due to conflicts with New York 2016 International Show and the APS Summer Show scheduled to be held in Portland in August 2016. This bye was approved, so the review and any potential revisions to the MOU will be effective for 2017, 2018, and 2019.

The part of the MOU pertaining to OSS and PPE will not be discussed here. As a result of a recent PIPEX committee meeting, a negotiating committee (PPE) has been established to resolve any difference between OSS and PPE for 2017, 2018, and 2019.

A negotiating committee also has been set up to discuss the relationships between PPE and NWFSC for 2017, 2018, and 2019. Preliminary discussions indicate that there probably will not be any major changes in the MOU between PPE and NWFSC.

In order that NWFSC members may better understand the arrangements outlined in the current MOU, the main points applicable to NWFSC are summarized as follows:

1. Each year in which PPE mounts a PIPEX show, PPE shall pay to NWFSC the sum of \$1,000.00 to license the name PIPEX for exclusive use in all aspects of the philatelic show (advertising, promotion, show program, etc.)

2. PPE will make meeting space available at no charge for the NWFSC to hold its Annual General Meeting and other meetings.
3. PPE will provide time at the PIPEX awards dinner for NWFSC to give its customary awards.
4. In the PIPEX show programs, PPE will continue to list NWFSC award data and provide the NWFSC with up to one page of free advertising.
5. If a PIPEX event produced by PPE loses money, PPE will not seek monetary relief from NWFSC.
6. PPE will not expect to receive from NWFSC any contributions towards the costs of awards. Also, PPE will assume responsibility for obtaining PIPEX medals and PPE purchased from NWFSC their stock of PIPEX medals.

A point in the MOU that is applicable to both OSS and NWFSC is as follows:

After meeting all financial obligations, any excess of income over expenditure generated by PPE in producing PIPEX events will accrue to PPE until such time as reserves are established. In future years, surplus funds may be distributed inter alia to OSS and NWFSC.

— continued on page 3

### Inside

PIPEX MOU Review .....	1
From the Editor's Desk .....	2
Chairman's Notes .....	3
Strait Stamp Show Report .....	3
APS Stamp Cruise 2014 .....	4
Seattle's First Stamp Dealers .....	5
SEAPEX 2014 .....	6
Club Exhibits at PIPEX .....	7
Evergreen Stamp Show Report .....	8
Club Activities .....	9
Wild Horse Wind and Solar Facility .....	10
Deer Trail, Washington DPO .....	11
Expo '74 Spokane .....	11
Stamp Show Calendar .....	12

## The Federated Philatelist

### Editor

JACK R. CONGROVE  
P.O. Box 33092  
Fort Lewis, WA 98433  
253-564-0969  
jackcongrove@comcast.net

## Northwest Federation of Stamp Clubs

<http://www.nwfedstamps.org>

### Chairman of Board of Directors

LAWRENCE CLAY  
P.O. Box 6228  
Kennewick, WA 99336-0228  
Phone: 509-735-3731  
lclay3731@charter.net

### Board of Directors

ERIC A. RANGER  
New Westminster, British Columbia

KEITH SPENCER  
Edmonton, Alberta

LAWRENCE CLAY  
Kennewick, Washington

LEONARD LUKENS  
Phoenix, Oregon

### Executive Secretary

Vacant

### Treasurer

ALEX HADDEN  
#19 – 7651 Francis Road  
Richmond, B.C. V6Y1A3  
Phone: 604-272-2614  
alex-hadden@shaw.ca

### Judging Chairman

DICKSON PRESTON  
Seattle, Washington

### History Chairman

LEN LUKENS  
Phoenix, Oregon

### Webmaster

DAVID HARRIS  
20908 W. Bannock Ave.  
Medical Lake, Washington  
509-299-7543  
sqpiano@gmail.com

## From the Editor's Desk



I have been gratified to receive some positive feedback regarding the last edition, which was my first as your editor. I hope to be able to maintain and perhaps even improve the quality of the newsletter in future editions.

This edition should be published by the last day of August. I had planned that it would go out sooner, but I have been out of town working for the past month, so I got a little behind.

Also, the previous edition was released later than intended due to a miscommunication between your editor and the publisher. I had delivered it in May, but our publisher was awaiting confirmation that it was the final copy. I will take action to insure this does not happen in the future.

The front page story explains some of the actions regarding the memorandum of understanding for the operation of PIPEX. After some negotiations, it seems that the show is back on its regular path.

This edition contains some reports on Federation Club shows that have been held this summer. The indications are that the philatelic hobby is doing very well here in The Great Northwest. Notice that when I use TGN it is always capitalized. I was not born here, but I got here as soon as I could. I greatly enjoy living in this area of the country and I am pleased to help promote the great hobby of philately here.

Recently the editor of *Astronomy* magazine observed how difficult it is to get young people interested in that hobby and in scientific pursuits in general. This is a challenge all hobbies, including ours, faces in a culture where we are immersed in a continual stream of entertainment. It is troubling that people find more amusement in the unreality of video games and television programs than in interacting with the real world.

This is why it is encouraging to see youth participation in some of our Northwest stamp shows (see page 8). I urge all of you to encourage young people of your acquaintance to give stamp collecting and especially exhibiting a try. All shows have special prizes to recognize youth exhibits and too often these go un-awarded due to the lack of a competitor.

Please keep your articles coming. I am especially interested in publicizing any upcoming events your club is planning to hold. **Input for the next edition is due to me not later than 15 November 2014.**

— Jack R. Congrove, Editor

---

## PIPEX MOU Review *(from page 1)*

This is a point that will be part of the discussions on MOU or agreement for future years.

The results of the negotiations with PPE will be published in a future *Federated Philatelist*.

---

## Strait Stamp Show

— *by Dick McCammon*

More than 150 stamp collectors from local area, Alaska, Montana, and Victoria, Canada attended the twenty-first annual Strait Stamp Show held on 9 August 2014, at the Masonic Lodge in Sequim, Washington. Seven stamp dealers were on hand to buy, sell, and appraise stamps, postal covers, and other philatelic items.

In addition to the dealers, there was a table for young and old to dig for treasure amongst thousands of stamps piled high for a penny a stamp.

Twelve exhibitors displayed frames on a wide variety of topics related to stamp collecting.

The winning exhibits were judged according to the following: Most Educational by Bea Vogel of Helena, Montana, for her exhibit on *Spiders*. Most unusual by Ann Harris of Medical Lake, Washington, for *A Day in the Life of a Frog*, and Most Attractive by Julie Tarbuck, Sequim, for *Fashions and Costumes*.

Ailicia Pairadee of Sequim won a prize for her guess of 1,400 that was closest to the 1,389 stamps in a jar.

The Sequim Postmaster was on hand to apply the special cancel designed specifically for the show. Those who missed getting the cancel may obtain one from the Sequim Postmaster by providing their own stamped envelope at the following address: Sequim, WA .98382

At the end of the day, everyone who attended the show left with the feeling stamp collecting was alive and well.



---

## Chairman's Notes

Our illustrious Chairman has been travelling extensively during the recent months attending various meetings involving the Federation business as well as the Boy Scouts and so it falls to me to fill this space.

Great. He gets to go to Copenhagen and all I get is this stupid T-shirt.

You probably have already noted the front page story regarding the memorandum of understanding that details the specifics for the operation of the Pacific International Philatelic Exposition (PIPEX).

There have been multiple proposals with regard to this MOU and the principals have been holding meetings to work out the details in which our Chairman has been intimately engaged.

Currently, the operation of the show will continue basically in accordance with the previous agreement. However, there more than likely will be some adjustments to forthcoming event as the details are negotiated among the organizations involved.

— *Jack R. Congrove, Editor*

# APS Stamp Cruise 2014

— by Lisa D. Foster

This year the American Philatelic Society Stamp Cruise set sail in the Pacific Northwest. The event took place on the Norwegian Cruise Line ship *Norwegian Jewel*, from May 17 through May 24, 2014.

Departing from Seattle, Washington, with visits to Alaskan ports-of-call in Ketchikan, Skagway, and Juneau and a stop in Victoria, British Columbia before returning to Seattle, the Stamp Cruise included 42 participants.

The cruise offered many events including presentations, philatelic show and tell, a stamp auction, and a nightly dinner. On Tuesday, participants enjoyed a private cocktail party hosted in the Stardust Lounge in front of large picture windows providing a wonderful view while the ship maneuvered through ice blocks as it neared the Sawyer Glacier. (see photo).



APS Stamp Cruise 2014  
Game Show Contestants



APS Stamp Cruise 2014  
Sawyer Glacier

On Thursday there was the “Having Nothing to do with Stamps Game Show,” which was quite entertaining. (see photo). One of the contests that I plan to try at my local club was “Name that stamp.” Participants looked at stamps, covers, and philatelic items on numbered pages, and wrote down on a numbered sheet what they believed the item was. After completion, the presenter solicited answers and the participant who answered the most correctly won a prize. It was not only fun but educational as well.

## UPCOMING SHOWS

### SEAPEX 2014

September 12-14

Community Center, Tukwila, WA

<http://seapexshow.org>

### VANPEX

September 26-27

W. Burnaby United Church, Burnaby, BC

### Inland Empire Apple Harvest

September 27-28

Hilton Garden Inn, Spokane, WA

### Umpqua Valley Stamp Show

October 4-5

Seven Feathers Hotel & Casino, Canyonville, OR

### VICPEX 2014 Stamp Show

October 4-5

Comfort Hotel, Victoria, BC

### CALTAPEX 2014 Stamp Show

October 17-19

The Kerby Centre, Calgary, AB

### Filatelic Fiesta 2014

November 14-16

Santa Clara Fair Grounds, San Jose, CA

---

# Seattle's First Stamp Dealers



— by Lyman R. Caswell

On 5 July 1904, the office of Emil Kohn, “Agency and Commissionaire,” in Temesvár, Hungary (now Timișoara, Romania), posted a letter to the “New Century Stamp Co.” at 113 28th Avenue in Seattle. The cover, shown above, is franked with a 25-fillér “Turul” definitive stamp, which paid the correct postage from Hungary to other countries from 1 January 1900 to 31 December 1913.

The address on this cover raised the question, was this the first stamp dealer in Seattle, or were there earlier stamp dealers? Inquiries at the Seattle Public Library yielded answers. City directories for Seattle do not list any stamp dealers prior to 1902. The New Century Stamp Company is listed in Polk’s Seattle City Directory for the years 1902 through 1905.

The proprietor was Lawrence Manning Sizer, who was only fourteen years old in 1902, and the place of business, 113 28th Avenue, was Lawrence’s home. In the final listing, for 1905, the place of business was 1-2 Starr Boyd Building. Lawrence’s father, Henry Sizer, had the office of his insurance agency, H. L. Sizer and Son, at 31-32 in the Starr-Boyd Building.

Young Lawrence Sizer got off to an ambitious start. He placed a classified advertisement under “Wanted--Miscellaneous” in the Seattle Daily Times for 3 October 1902:

NEW CENTURY STAMP CO., 113 28th Ave. Phone Red 4968, buys, sells, and exchanges postage and revenue stamps of all kinds Send for approval sheets. Lawrence M. Sizer, Manager.

A second advertisement appeared the following day under the heading, “Agents Wanted:”

WANTED--In city and state, agents wanted to sell our approved (sic) sheets of foreign and domestic stamps. New Century Stamp Company, 113 28th avenue.

Lawrence Sizer’s stamp business did not last very long. There is no listing for his company after 1905.

On 6 March 1907, he was appointed to a job as a clerk in the Seattle post office, but was fired on 12 October 1907 on charges of “inattention to duty, making false statements in order to obtain leave of absence, and low rating in efficiency.” He contested these charges, but lost the contest. After this he disappears from the records.

A second stamp company also appears in the records in 1902. This was the Scott-Williams Postage Stamp and Coin Co, J. C. Brassington, President, and C. D. Folger, Secretary, at 65-66 Sullivan Building. The Scott-Williams Company apparently did not last as long as the New Century Company, for its last listing was in 1903, the year after its first listing.

# SEAPEX 2014

— by Jack R. Congrove

The Seattle Philatelic Exhibition (SEAPEX) is only days away. This year we have 21 dealers providing a wide variety of stamps, postal history, and other philatelic items.

The show is also offering 133 competitive exhibit frames judged by World Series of Philately (WSP) jury, with a broad variety of both traditional and topical exhibit types.

The schedule is filled with seminars, presentations, and society meetings, and other events to enhance its program.

We will hold the show on 12–14 September at the Tukwila Community Center, located at 12424 - 42nd Avenue South, Tukwila, Washington, just north of the SeaTac Airport. It has easy access from I-5 in either direction and plenty of free parking. Admission is free.

This year SEAPEX will be celebrating the 200th anniversary of *The Star Spangled Banner*, which occurs exactly on Saturday of the show. We will have three commemorative cachets along with special show pictorial cancels available at the USPS station.

As a special event, on Saturday, we will host a First Day of Sale ceremony for the new Fort McHenry “forever” stamp marking the bicentennial of this battle that inspired the poem that became our National Anthem.

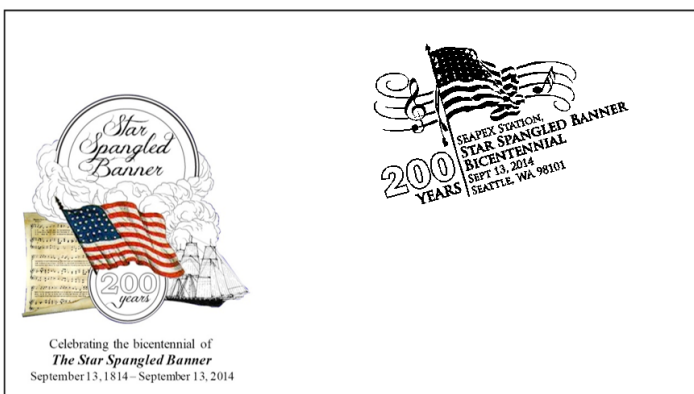
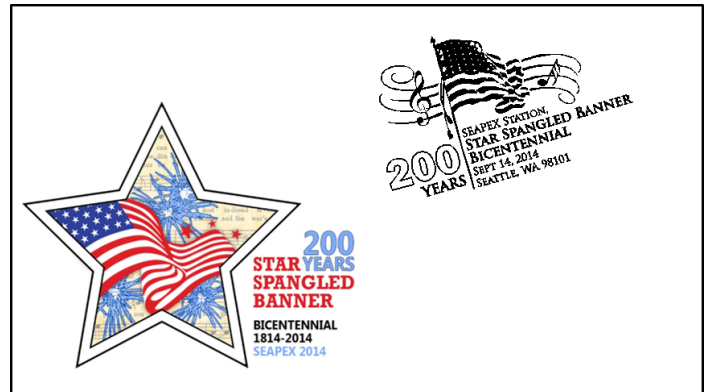
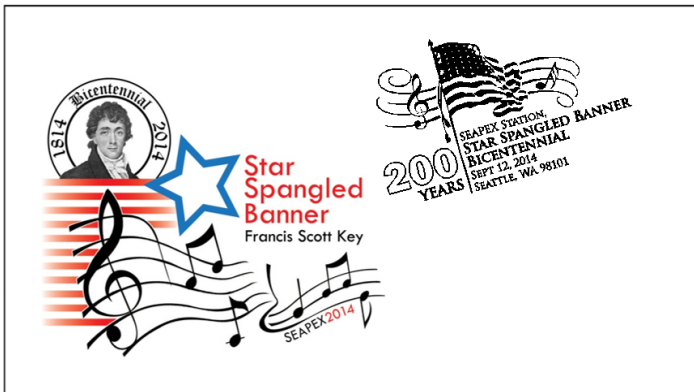
We will have several guest speakers including the Seattle Postmaster and a Soldier from the Joint Base Lewis-McChord Honor Guard dressed in a period uniform.

Meetings are scheduled for chapters of the Universal Ship Cancellation Society, German Philatelic Group, American Helvetia Philatelic Society, and Women Exhibitors.

We always have lots of Youth activities including games, design contests, and free stamps. We also expect many Boy Scouts to participate in a Merit Badge Seminar.

Again this year we are offering “What’s in Your Attic?” each day—a free service for what to do with collections or other philatelic items.

Please visit our website at [www.seapexshow.org](http://www.seapexshow.org) for more details.



---

# Club Exhibits at PIPEX

— by George Struble, PIPEX Exhibits Chair

I would like to encourage more clubs and societies in the Northwest Federation to take advantage of the opportunity to mount club exhibits in PIPEX 2015 this coming May.

Club exhibits were an innovation in PIPEX 2014. Each club or society that is a member of the Northwest Federation of Stamp Clubs was invited to mount a one-frame exhibit to represent the club or society.

The first page was to introduce the club: its name, its location, meeting places and times, history, and whatever else the club wanted to publicize about itself. Each of the remaining fifteen pages was to be supplied by a different member of the club. If that was not feasible, the rules permitted each club member to provide up to four pages. In this way, at least four members would contribute to the exhibit. There were no requirements about consistency of format, paper, or theme.

We initiated club exhibits with several objectives:

- Provide PIPEX visitors with some varied and interesting exhibit items
- Show off some of the treasures of our members
- Reinforce the value of the Northwest Federation
- Publicize our clubs and societies, encouraging new members to join them
- Build community in each of the entering clubs
- Interest members of the clubs in mounting their own individual exhibits
- Increase club members' awareness of PIPEX and encourage their attendance at PIPEX.

When the PIPEX Committee approved the initiation of club exhibits, it set a maximum of ten frames. I would have been quite satisfied with five participating clubs, but was delighted that eight clubs entered exhibits in 2014. The participating clubs:

Evergreen Stamp Club	Salem Stamp Club
Greater Eugene Stamp Society	Strait Stamp Society
Northwest Philatelic Library	Tri-Cities Stamp Club
Oregon Stamp Society	
Southern Oregon Philatelic Society	

A ninth society intended to assemble a club exhibit, but discovered too late that they had not sent an entry form and there was no space for them at the last minute.

The eight exhibits were mounted in two groups of four among the competitive exhibits. By all reports, they did fulfill our objectives, and did add variety and interest to PIPEX.

Mounting a club exhibit does take some initiative, work, and coordination. One club member takes on the coordinator responsibility for developing the list of members who will provide pages. The coordinator accepts the pages shortly before the show and delivers them to the exhibit site on Thursday for mounting. After the show, the coordinator removes the pages and returns them to their owners.

Several people thought the entries should be judged and a winner recognized. For this first year, I resisted that. However, I *did* conduct an informal survey, asking ten visitors at the show who were not members of any of the participating clubs two questions: (1) which of the club exhibits did you think was best, and (2) why.

I *did not* tabulate the answers to the first question. I was interested in what people thought made the best club exhibit. Some respondents cited the variety. More appreciated the unifying theme in one of the exhibits.

We plan to renew club exhibits in PIPEX 2015. Again the quantity of frames available will be limited, though perhaps the limit will be larger than ten. As last year, we intend to give the clubs free rein to mount a wonderful variety of pages as they are able.

We *do* plan to judge the club exhibits in a format similar to last year's informal survey. I will ask a panel of visitors unaffiliated with any of the exhibiting clubs to make their choice of best exhibit. We will not supply any criteria for this determination.

There is a large silver cup that PIPEX used as a trophy in past decades, rotating to a new winner every year. It was retired to the home of J.E.F. Robertson for some years, and returned to PIPEX in 2013. It belongs to the Northwest Federation and currently resides at the Oregon Stamp Society's clubhouse.

It is quite tarnished, but *might* be polished by May 2015. Our plan is to award this cup to the best club exhibit, to hold for a year and return to be awarded again in 2017, since there will be no PIPEX in 2016.

We expect that club exhibits in PIPEX 2015 will again build community in the participating clubs as they assemble their exhibits, will add wonderful variety to the PIPEX show, and will increase interest in PIPEX among the collecting community in the Pacific Northwest. I encourage more clubs and societies to participate this year. The prospectus and entry form will be on the PIPEX website in September at [www.pipexshow.org](http://www.pipexshow.org).

# Evergreen Stamp Show

— by Lisa D. Foster

On the weekend of 19–20 July 2014, the Evergreen Stamp Club held their annual summer show in Kent, Washington. Visitors enjoyed viewing the 13 exhibits/collections of various topics including animals (Spiders, Butterflies, Whales), famous persons (Alexander Hamilton, Henry VIII), stamps-on-stamps (German), and of course, aerophilately.

Exhibits came from ESC members and visiting exhibitors from the Greater Eastside Stamp Society and Montana. On Saturday, Philatelic Judge Dickson Preston led a walking tour of the exhibits during which he discussed the difference between a collection and an exhibit, answered questions, and provided participants encouraging feedback.

This Youth Exhibitor was thrilled to have won the People's Choice Award! Visiting youths also had fun creating cachets and first day covers of the Hot Rod stamps.



David Levy, Evergreen Stamp Club  
With his exhibit and awards

Adults participated in a card making class hosted by Carol Edholm who provided all the needed tools and instructions to create five philatelic greeting cards for \$20.00.

## PIPEX 2015

MAY 8, 9, 10, 2015

Red Lion Hotel on the River at Jantzen Beach  
909 N Hayden Island Drive, Portland 97217

SPECIAL SHOW ROOM RATE      FREE PARKING

FREE HOTEL AIRPORT SHUTTLE

Convening Societies:

American Society of Polar Philatelists  
Military Postal History Society  
Universal Ship Cancellation Society  
Civil Censorship Study Group

40 Dealers    240 Frames of Exhibits  
USPS Sales Booth

Cachet Makers Bourse    Youth Activities  
Meetings & Seminars

Stamp Buddy for Beginning & Returning Adult Collectors

Boy Scout Stamp Collecting Merit Badge Program

Harmer Schau Auctions Northwest Auction

More details on the show website:  
[www.pipexshow.org](http://www.pipexshow.org)

## SEAPEX 2014

September 12–14, 2014

\*\*\*\*\*

### Tukwila Community Center

12424 42nd Avenue South

Friday: 11:00 AM to 5:00 PM

Saturday: 10:00 AM to 5:00 PM

Sunday: 10:00 AM to 4:00 PM

<http://www.seapexshow.org>

Twenty-one dealers, 144 frames of exhibits, cachet-makers bourse, Fort McHenry First Day of Sale ceremony, youth activities, Boy Scout merit badge, society chapter meetings, presentations. Free admission.



---

## Club Activities

The **Anchorage Philatelic Society** does not publish a newsletter, but it will sponsor a show (APEX) 6–8 March 2015. Dues are \$10 per year, \$15 for families, and \$2 for youth. See their website at [www.anchoragephilatelic.org](http://www.anchoragephilatelic.org).

The **Bellingham Stamp Club** publishes *The Bellingham Philatelist* newsletter (print only). The club has been on summer break and resumes its meetings on 17 September.

The **British Columbia Philatelic Society** is planning their annual show (VANPEX) 26–27 September. Dues are \$20 per year for individuals, \$30 for families, and \$7.50 for students younger than 18. See details at their website: [www.bcphilatelic.org](http://www.bcphilatelic.org).

The Summer edition of the *West Coast Express* published by the **British North America Philatelic Society** contains a report on the society's annual meeting and banquet. Dues are \$10 per year for all. See details at their website: <http://bnaps.org/regional/pnwr/pnw2.htm>.

The *Calgary Philatelist* published by the **Calgary Stamp Society** features an article about a new stamp and postal card from Canada Post showing the Head-Smashed-In buffalo jump south of Calgary. The newsletter also includes an interesting postal history article about Mount Laggan and End-of-Track rail post office. Dues are \$15 plus \$10 initiation fee. See details at their website: [www.calgaryphilatelicssociety.com](http://www.calgaryphilatelicssociety.com).

The **Edmonton Stamp Club Bulletin** for September contains a complaint about the treatment of registered mail by the Canada Post. It also features Part 3 of an article about the formation and occupation of Eastern Silesia following WWI and the resulting overprinted stamp issues. Dues are \$25 per year for individuals, \$35 for families. See [www.edmontonstampclub.com](http://www.edmontonstampclub.com).

The **Evergreen Stamp Club** August newsletter reports on their successful summer club stamp show held 19-20 July. See the report on page 8. Dues are \$20 per year. See their website at [www.evergreenstampclub.org](http://www.evergreenstampclub.org).

The **Greater Eastside Stamp Society** does not publish a newsletter. They held their annual club picnic on 17 July. See their website at <http://home.comcast.net/~g-e-s-s/>.

The **Greater Eugene Stamp Society** *Echoes* newsletter for July features an article on forgeries of Brazil postage due stamps. The society held their annual picnic on 9 August and a club auction on 27 August. GESS is planning its fall show on 20 September. Dues are \$15 per year, \$5 for youth under 18. See [www.greatereugenestampclub.org](http://www.greatereugenestampclub.org).

The **Inland Empire Philatelic Society** is somewhat behind on publishing its newsletter, *The Lilac Hinge*. The club is preparing for its Apple Harvest stamp show 27–28 September. Dues are \$10 per year for individuals, \$15 for families, and \$5 for youth under 18. See their website at [www.ieps-stamps.com](http://www.ieps-stamps.com).

The *Album Page* newsletter for August published by the **Oregon Stamp Society**, contains an interesting article on putting together an exhibit by Sheryll Ruecker. Each edition has an article on the featured cover of the month. See their website at [www.oregonstampssociety.org](http://www.oregonstampssociety.org). Dues are \$24 per year for regular members, \$16 for associate members who reside outside the local area.

The **Northwest Philatelic Library** newsletter, *Book Reports*, for May-June features and article on encased postage stamps. It also lists several surplus literature items for sale. Dues are \$12 for those 18 and older, \$3 for under 18. See their website: <http://www.nwpl.org/>.

The **Pacific Northwest Postal History Society** publishes a quarterly journal titled *The Oregon Country* that covers the entire spectrum of Northwest postal history and includes special research projects. Dues are \$15 per year. See [www.pacificnorthwestpostalhistorysociety.org](http://www.pacificnorthwestpostalhistorysociety.org).

The **Peace Arch Stamp Club** is the newest member of the NWFSC. They do not publish a newsletter, but they offer a variety of activities including club auctions and interclub trading. Dues are \$10 per year. See <http://stampclub.ca/peacearch>.

The **Salem Stamp Society** newsletter, *Willamette Stamp & Tongs*, contains news of club activities and a report on their club auction in June. Dues are \$10 per year for individuals, \$15 for couples, and \$20 for families. See their website at [www.salemstampssociety.org](http://www.salemstampssociety.org).

The **Sno-King Stamp Club** held an auction in June and their annual picnic on 20 August. They publish a monthly newsletter, *Sno-King Stamp Club Philatelic News*. The June edition features an interesting article on stamp inverts. Dues are \$8 per year, \$5 for youth under 18. See their website at <http://sno-kingstampclub.freehostia.com>.

The **Strait Stamp Society** held their annual stamp show on 9 August. See the report on page 3. Their bi-monthly newsletter, *Strait Stamp Talk*, contains a report on PIPEX 2014 and news about upcoming club activities. The club has no dues, but accepts donations. See their website at [www.straitstamp.org](http://www.straitstamp.org).

— continued on page 10

# Wild Horse Wind and Solar Facility

— by Lisa D. Foster

On 13 April 2014, on the return home from the John D. Arn Philatelic Symposium at Moses Lake, Jack Congrove and Lisa Foster visited the Renewable Energy Center at the Wild Horse Wind and Solar Facility located on the Vantage Highway.

The center offers free tours daily at 10:00 AM and 2:00 PM April through November. Although a windy walk, it is easy to traverse, informative, and offers beautiful views.

Harnessing the wind to provide power is not something new. Humans have taken advantage of the wind throughout recorded history and there is ample evidence that pre-historic sailors employed it to propel their craft across wide stretches of the sea.

Even using it to provide power on land is not a recent invention.

Windmills have provided power for milling grain, pumping water, and other agricultural and industrial uses.



Dhow on the Nile  
Aden, Sc#8, 1937



Windmill Overprint  
Romania, Sc#4433, 2001



Kansas Statehood  
US, Sc#4493, 2011

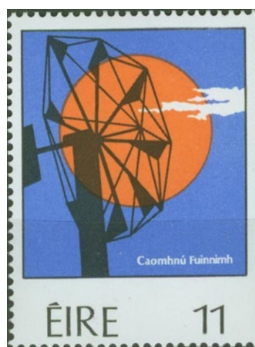
Many countries have released postage stamps picturing wind turbines including the 2011 Kansas Statehood stamp.

Like in Kansas, installed wind power capacity in Washington has seen strong growth in recent years.

Washington ranks among the top ten states with the most wind power installed. Wind power accounted for 5.3 percent of total electricity generated in Washington during 2011.



Green Energy  
Korea, Sc#2318c, 2009



Wind Turbine  
Ireland, Sc#458, 1979



Wind Energy  
Brazil, Sc#3221, 2012



Renewable Energy  
India, Sc#2218, 2007

## Club Activities *(from page 9)*

The **Sidney Stamp Club** does not publish a newsletter. They are planning a club show on 11 October. Dues are \$5 per year.

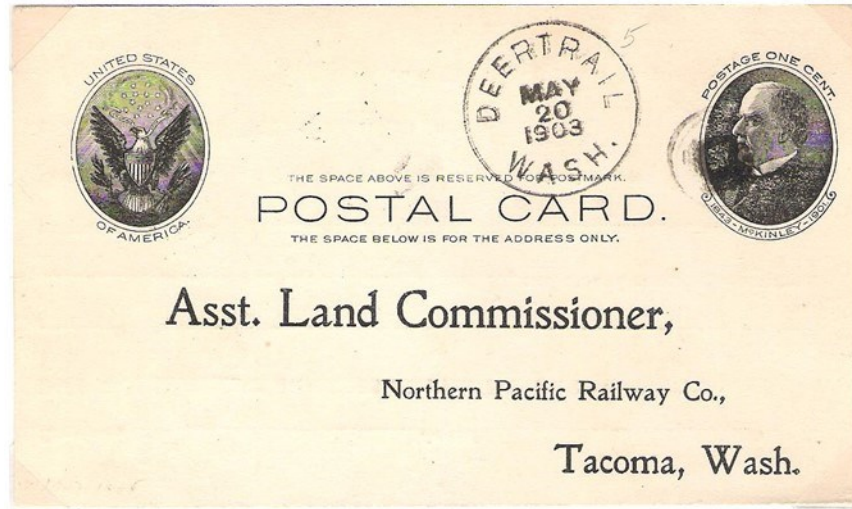
The **Tri-Cities Stamp Club** publishes *The Triangle* newsletter. They held a joint meeting with the Inland Empire Stamp Club featuring guest speakers, and auction, and a buffet on 26 July in Ritzville, Washington. Their annual picnic was on 27 August at the home of a club member. The club sponsors a show this year on 4-5 October in Richland, Washington.

The **Vancouver Island Philatelic Society** offers several presentations in their upcoming monthly meetings. They do not publish a newsletter. Dues are \$20 per year. See their information at [www.vicstamps.com/vips](http://www.vicstamps.com/vips).

[Ed. note: If you would like to have news about your club activities and upcoming plans published in future columns, please email either me ([jackcongrove@comcast.net](mailto:jackcongrove@comcast.net)) or Lisa Foster ([fosteld@gmail.com](mailto:fosteld@gmail.com)) with the details.]

---

# Deer Trail, Washington DPO



— by Bob Kinsley

Many of the discontinued post offices (DPO) of Stevens County, Washington were mining communities spawned by the gold rush and other metals explorations at the turn of the last century.

As gold, silver, and other metals were discovered and mines created, the workers and their families established communities that obtained post offices. And when the mines stopped producing, the workers and their families moved on and the post offices were closed.

A group of hunters on the trail of a deer stumbled over an outcropping that they discovered was silver ore of a very high grade. They filed a claim, constructed a mine, and created a village names Deer Trail in 1901. After mining some three to four million dollars worth of silver ore, the mine stopped producing and closed, together with the post office, in 1909.

---

## Expo '74 Spokane

— by Jack R. Congrove

Expo '74 was the first environmentally themed world's fair. Held in Spokane from May to November, it drew 5.2 million visitors.

The fair grounds were located on Canada Island, Havermale Island, and the adjacent south bank of the Spokane River in the center of the city.

At the time, Spokane was the smallest city to host a world's fair and the event served to greatly revitalize the city's urban core and boost the local economy.

The fair hosted several high-profile environmental events including a UN symposium. The IMAX movie theater made its debut at the Expo showing the movie *To Fly*.

After the fair, the fairgrounds became the city's Riverfront Park.

On 18 April 1974, the US Postal Service issued a first class stamp in Spokane to promote the fair .The design

features artwork by Peter Max, a German-American illustrator and graphic artist known for his psychedelic posters.

The images are “Cosmic Jumper” and “Smiling Sage.” Printing was by the Bureau of Engraving and Printing using the photogravure method on the Andreotti press.

The stamps are perforated 11 in sheets with four panes of 40 each with a total run of 135,052,000 stamps.



Expo '74  
US, Sc#1527, 1974

## UPCOMING STAMP SHOWS / BOURSES

SHOW DATES			Major shows in bold / PNW shows in italic	Revised: 8/30/2014	
FRI	SAT	SUN	SHOW NAME	LOCATION	TYPE
<b>12-Sep</b>	<b>13-Sep</b>	<b>14-Sep</b>	<b>SEAPEX Seattle Philatelic Exhibition</b>	<b>Tukwila, WA</b>	<b>Show</b>
12-Sep	13-Sep	14-Sep	Aerophilately 2014	Bellefonte, PA	Show
<b>19-Sep</b>	<b>20-Sep</b>	<b>21-Sep</b>	<b>MILCOPEX (Milwaukee Philatelic Society) (WSP)</b>	<b>Milwaukee, WI</b>	<b>Show</b>
19-Sep	20-Sep	21-Sep	Greater Houston Stamp Show	Humble, TX	Show
	20-Sep		<i>Greater Eugene Stamp Society Fall Show</i>	Eugene, OR	Bourse
		21-Sep	<i>STAMPEX (Salem Stamp Society)</i>	Salem, OR	Bourse
26-Sep	27-Sep		<i>VANPEX (British Columbia Philatelic Society)</i>	Burnaby, BC	Show
	27-Sep	28-Sep	<i>Inland Empire Philatelic Society Apple Harvest</i>	Spokane, WA	Bourse
3-Oct	4-Oct	5-Oct	WINEPEX 2014 (Redwood Empire Collectors Club)	San Rafael, CA	Show
	4-Oct	5-Oct	<i>Umpqua Valley Stamp Show</i>	Canyonville, OR	Show
	4-Oct	5-Oct	<i>VICPEX 2014 Stamp Show</i>	Victoria, BC	Show
	4-Oct	5-Oct	<i>Tri-Cities Stamp Show</i>	Richland, WA	Bourse
		12-Oct	<i>Fenwick Stamp &amp; Coin Show</i>	Renton, WA	Bourse
17-Oct	18-Oct	19-Oct	<i>CALTAPEX 2014 (Calgary Philatelic Society)</i>	Calgary, AB	Show
<b>17-Oct</b>	<b>18-Oct</b>	<b>19-Oct</b>	<b>SESCAL (Fed. Phil. Clubs of S. California) (WSP)</b>	<b>Los Angeles, CA</b>	<b>Show</b>
	18-Oct		<i>Great Falls Stamp and Paper Collectibles Show</i>	Great Falls, MT	Bourse
		26-Oct	<i>Olympia Round-Up Stamp Show</i>	Olympia, WA	Bourse
	25-Oct	26-Oct	East Bay Collectors Club 69th Annual Show	Walnut Creek, CA	Show
	25-Oct	26-Oct	Saskatoon Coin & Stamp Show	Saskatoon, SK	Bourse
	1-Nov	2-Nov	SACAPEX 2014 (Sacramento Philatelic Society)	Sacramento, CA	Show
	8-Nov	9-Nov	Bellevue ASDA Show	Bellevue, WA	Bourse
<b>14-Nov</b>	<b>15-Nov</b>	<b>16-Nov</b>	<b>Filatelic Fiesta 2014 (San Jose Stamp Club) (WSP)</b>	<b>San Jose, CA</b>	<b>Show</b>
		16-Nov	<i>Victoria Stamp and Coin Fair</i>	Victoria, BC	Bourse
28-Nov	29-Nov		<i>Vancouver Stamp Fair</i>	Vancouver, BC	Bourse
	6-Dec	7-Dec	<i>Salem Coin &amp; Stamp Show</i>	Salem, OR	Bourse
	6-Dec	7-Dec	PENPEX (Sequoia Stamp Club)	Redwood City, CA	Show
		14-Dec	<i>Fenwick Stamp &amp; Coin Show</i>	Renton, WA	Bourse
	20-Dec		<i>Portland Winter Stamp Fest</i>	Portland, OR	Bourse
<b>2015:</b>					
	3-Jan	4-Jan	Sacramento Stamp Faire	Sacramento, CA	Bourse
9-Jan	10-Jan	11-Jan	ORCOEXPO Stamp Show	Anaheim, CA	Show
	17-Jan	18-Jan	Great American Stamp Expo	San Jose, CA	Bourse
<b>23-Jan</b>	<b>24-Jan</b>	<b>25-Jan</b>	<b>SANDICAL (WSP)</b>	<b>San Diego, CA</b>	<b>Show</b>
<b>13-Feb</b>	<b>14-Feb</b>	<b>15-Feb</b>	<b>APS AmeriStamp Expo (WSP)</b>	<b>Riverside, CA</b>	<b>Show</b>
<b>24-Apr</b>	<b>25-Apr</b>	<b>26-Apr</b>	<b>WESTPEX (WSP)</b>	<b>Burlingame, CA</b>	<b>Show</b>
<b>8-May</b>	<b>9-May</b>	<b>10-May</b>	<b>PIPEX (WSP)</b>	<b>Portland, OR</b>	<b>Show</b>
<b>15-May</b>	<b>16-May</b>	<b>17-May</b>	<b>ROMPEX (RMSS) (WSP)</b>	<b>Denver, CO</b>	<b>Show</b>
<b>31-Jul</b>	<b>1-Aug</b>	<b>2-Aug</b>	<b>ATA National Topical Stamp Show (WSP)</b>	<b>Clackamas, OR</b>	<b>Show</b>
<b>21-Aug</b>	<b>22-Aug</b>	<b>23-Aug</b>	<b>APS StampShow (begins 20-Aug) (WSP)</b>	<b>Grand Rapids, MI</b>	<b>Show</b>
<b>11-Sep</b>	<b>12-Sep</b>	<b>13-Sep</b>	<b>SEAPEX Seattle Philatelic Exhibition</b>	<b>Tukwila, WA</b>	<b>Show</b>
<b>2016:</b>					
<b>5-Aug</b>	<b>6-Aug</b>	<b>7-Aug</b>	<b>APS StampShow (begins 4-Aug) (WSP)</b>	<b>Portland, OR</b>	<b>Show</b>
<b>Repetitive Events</b>			<i>Rose City Stamp Fair (2nd Saturday OSS clubhouse)</i>	Portland, OR	Bourse
			<i>Collector's Corner (4th Saturday OSS clubhouse)</i>	Portland, OR	Bourse