

# Federated Philatelist

Newsletter of the Northwest Federation of Stamp Clubs

No. 209, December 2014

## SEAPEX 2014



**Fort McHenry First Day of Sale Ceremony** L to R: Conner Wrynn (Scout flag detail), Jack R. Congrove, SGT Vincent E. Morales, Bailey Martinet, Thomas D. Morgan, John S. Morgan, Cameron Kwartin (Scout flag detail)

— by Jack R. Congrove

The Seattle Philatelic Exhibition (SEAPEX) held its annual show on 12–14 September at the Community Center in Tukwila, Washington, a suburb of Seattle. The exhibition included 132 frames of competitive exhibits, club exhibits, a bourse with 21 dealers, a first day of sale ceremony, and a variety of presentations and chapter meetings.

A highlight of the exhibition was the first day of sale ceremony for the Fort McHenry “Forever” commemorative stamp held on Saturday, 13 September—the 200th anniversary of the Battle of Baltimore and the birth of *The Star Spangled Banner*. This event included several speakers who gave interesting presentations on the historical aspects of the event that the stamp commemorates.

Miss Bailey Martinet sang *The Star Spangled Banner* after the posting of the colors by the flag detail from Cub Scout Pack 460 from Auburn, Washington. Jack Congrove spoke about the history of the American flag. SGT Vincent E. Morales of the I Corps Command Honor Guard, wearing a

reproduction 1814 uniform on loan from the Fort Lewis Museum, gave a description of the US Army uniforms of the period. — *continued on page 3*

### Inside

SEAPEX 2014 .....	1
From the Editor’s Desk .....	2
Chairman’s Notes .....	3
Arn Philatelic Symposium .....	4
CALTAPEX 2014 .....	5
Youth in Philately .....	6
Oregon Stamp Society Perfin .....	7
New SOPS Logo .....	8
Club Activities .....	9
Alaska State Fair Report .....	10
Mount Rainier National Park .....	11
Stamp Show Calendar .....	12

## Editor

JACK R. CONGROVE  
P.O. Box 33092  
Fort Lewis, WA 98433  
253-564-0969  
jackcongrove@comcast.net

## Northwest Federation of Stamp Clubs

<http://www.nwfedstamps.org>

## Chairman of Board of Directors

LAWRENCE CLAY  
P.O. Box 6228  
Kennewick, WA 99336-0228  
Phone: 509-735-3731  
lclay3731@charter.net

## Board of Directors

ERIC A. RANGER  
New Westminster, British Columbia

KEITH SPENCER  
Edmonton, Alberta

LAWRENCE CLAY  
Kennewick, Washington

ERIC HUMMEL  
Phoenix, Oregon

## Executive Secretary

Vacant

## Treasurer

ALEX HADDEN  
#19 – 7651 Francis Road  
Richmond, B.C. V6Y1A3  
Phone: 604-272-2614  
alex-hadden@shaw.ca

## Judging Chairman

DICKSON PRESTON  
Seattle, Washington

## History Chairman

LEONARD LUKENS  
Phoenix, Oregon

## Webmaster

DAVID HARRIS  
20908 W. Bannock Ave.  
Medical Lake, Washington  
509-299-7543  
sqpiano@gmail.com



This is the final edition for 2014, and it reminds us that the year-end holidays are upon us. I wish all of you to have enjoyable holidays and a safe and prosperous new year.

This is typically a time to reflect on the events and accomplishments of the past year and to look forward to our plans for the year to come.

This past year., the Federation had two successful national exhibitions in Edmonton and Portland and another aspiring one in Seattle plus many local and regional stamp shows and other philatelic events.

Next year, The Great Northwest will be even more blessed with philatelic opportunities when the American Topical Association brings its National Topical Stamp Show to Portland at the end of July. That will provide NW collectors with three national World Series of Philately exhibitions to attend and perhaps even a fourth WSP show if SEAPEX obtains approval from the American Philatelic Society (see story on page 1). This is something to rival even California with its wealth of exhibitions.

I regret to announce the passing of well-liked and respected Northwest stamp dealer. Arvin Morrow, owner of A & M Stamps of Renton, Washington, passed away at his home on September 21 after a short, but courageous battle with cancer. After retirement from the US Navy and a second career with Loral Corporation Arv opened his shop to focus on his lifelong passion for collecting coins and stamps. He is survived by his wife, Margaret, son Tony, and daughters Kathy White and Teri Prier, four grandchildren and one great-grandchild.

This edition contains more reports on Federation Club shows that have been held this summer. As I mentioned before, the philatelic hobby seems to be doing very well here in The Great Northwest.

Please keep your articles coming. I am especially interested in publicizing any upcoming events your club is planning to hold. **Input for the next edition is due to me not later than 15 February 2015.**

— Jack R. Congrove, Editor

## SEAPEX 2014 (from page 1)

LTC (Ret) Thomas D. Morgan of the Military History Society presented an overview of the battle and the Bombardment of Fort McHenry. John S. Morgan, Manager, Operations of the Seattle Post Office representing the USPS, spoke about the stamp design and production and unveiled the new design assisted by SGT Morales.



As an interesting aside, all four speakers were US Army combat veterans, which seemed especially appropriate since the stamp commemorates and depicts US Army soldiers in combat.

The exhibition offered a variety of interesting philatelic exhibits. Louis Fiset won the Grand Award for *Censored, Rerouted, Suspended, Resumed: U.S. International Mail in World War II*, which also won the Postal History Society Award. George Struble won the Reserve Grand for *Development of Swiss Airmail Up to 1939*.

The Single Frame Grand went to Ruth Caswell for *U.S. Advertising Covers for Book Publishers and Sellers, 1855–1910*. Geneva Varga (age 12) won the Youth Championship Award for *Lunar New Year*.

SEAPEX has been working toward obtaining certification from the American Philatelic Society (APS) to become a World Series of Philately (WSP) national exhibition. Approval requires successful completion of a four-year probationary period. This was the final year of that period and the SEAPEX will be submitting its application for WSP approval later this year.

SEAPEX 2015 will be held at the same venue on 11–13 September 2015. The exhibition will be celebrating the 75th anniversary of the opening (and collapse) of “Galloping Gertie,” the Tacoma Narrows Bridge. I invite all readers to attend SEAPEX 2015. Please visit our website at <http://seapexshow.org>, or check out our Facebook page at *Seapex: Seattle Philatelic Exhibition*, for details.

## Chairman’s Notes

The holiday season is about here. Best wishes to all of you for a Merry Christmas, Happy Holiday, and a great New Year as you continue your philatelic pursuits—successfully, I hope.

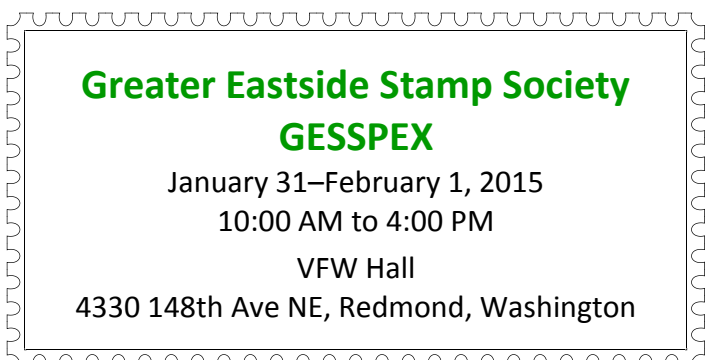
Plans are well underway for PIPEX 2015. It looks like there will be another full complement of dealers and outstanding exhibits. The NWFSC and Portland Philatelic Exhibitions (PPE) should be signing the final agreement before the end of the year that continues the relationship between PPE and NWFSC in a manner very similar to the past agreement. PPE has acquired a new domain name. It has been changed from [pipexshow.org](http://pipexshow.org) to [pipexstampshow.org](http://pipexstampshow.org).

George Struble, PIPEX exhibits chair, has again invited NWFSC clubs to prepare a one-frame exhibit for PIPEX 2015. Eight clubs exhibited last year and up to 12 clubs could be accepted this year. George sent out invitations and prospectuses for these recently to each club. If this information has been misplaced and you are interested, please contact George at [gstruble@willamette.edu](mailto:gstruble@willamette.edu).

The last two SEAPEX stamp shows in the Seattle area (Tukwila, Washington) have been successful. The NWFSC has been notified that the SEAPEX committee plans to repay at least \$500 of the \$2,000 loan that was made to SEAPEX before the 2013 show. Furthermore, the SEAPEX committee has been given the go-ahead to apply for full WSP status for their 2015 show. We extend our heartiest congratulations to them for a job well done.

As Chairman of NWFSC I have also been filling the shoes of the Executive Secretary of NWFSC for the past three years. I have enjoyed doing this but the time has come to really get serious about finding a permanent Executive Secretary. I would like to step down from both positions within the next year. Please look around and see if anyone can come up with a recommendation for the Executive Secretary position. Thank you.

—Lawrence Clay, Chairman



# Arn Philatelic Symposium

— by David Harris

The agenda for the 25th annual John D. Arn Philatelic Symposium at Moses Lake Washington has been set and it is a good assortment of speakers and events. The meeting will take place on April 11th at the Best Western in Moses Lake, Washington, and I am very pleased to report there is no increase in room or meal prices this year. Our speakers will be coming from California, Missouri, and Washington State.

Bill Dwyer, from Washougal, Washington, and a member of the WESTPEX organizing committee, will be giving a presentation on “The Philately of Air Pioneers in France.” Bill was scheduled to appear last year, but had to withdraw due to health concerns.

Carol Edholm from Mountlake Terrace, Washington, and well known to past attendees of the Moses Lake Symposium, will give a presentation on Experimental Postmarks of India.

David McNamee from Alamo, California (east of San Francisco and South of Walnut Creek), has graciously accepted an invitation to speak at Moses Lake in addition to his very busy duties with the American Philatelic Society as Chairman of the APS Committee on Accreditation of National Exhibitions and Judges (CANEJ). His topic will be “The conquest of the Zulu Nation 1877–1907.”

Henry Sweets from Hannibal, Missouri, has been associated with the Mark Twain Boyhood Home & Museum in Hannibal since 1978, and has been Director of the museum that entire time. He is also a recognized scholar of Mark Twain. He is honoring us with his appearance at his own expense and his topic will be “Mark Twain First Day—Changing With the Times.”

We will have our usual enjoyment of exchanging greetings with fellow attendees who we have not seen for a year as well as our silent and live auctions, the latter spearheaded by the very knowledgeable Howard Ness from the Inland Empire Philatelic Society in Spokane, Washington. The entire auction will be audited by a team of high-level mathematicians led by Steve Recher from the Tri-Cities Stamp Club in Kennewick, Washington.

Ruth Caswell and I have put a large amount of work into preparations for the 2015 meeting and we sincerely hope as many people attend as possible. There are many collectors who may not know about this meeting, and we hope to get more folks from Oregon, Washington, Idaho, Montana, and our neighbors in British Columbia and Alberta more involved.

Please talk it over at your stamp meetings and encourage your fellow collectors to attend. We guarantee that everyone will have a good time. Programs and registration forms will be in the mail about the middle of January 2015 to all who are on our mailing list.

## UPCOMING SHOWS

### CESSPEX

January 31-February 1  
VFW Hall, Redmond, WA

### APS AmeriStamp Expo

February 13-15  
Convention Center, Riverside, CA

### APEX

March 6-8  
Senior Activities Center, Anchorage, AK

### Edmonton Spring National Show

March 28-29  
Central Lions Recreation Centre, Edmonton, AB

### Inland Empire Apple Blossom

March 28-29  
Hilton Garden Inn, Spokane, WA

### WESTPEX 2015 Exhibition

April 24-26  
Airport Marriott Waterfront, San Francisco, CA

### PIPEX 2015 Exhibition

May 8-10  
Red Lion on the River, Portland, OR

### Evergreen Stamp Club Summer Show

July 18-19  
Kent Commons, Kent, WA

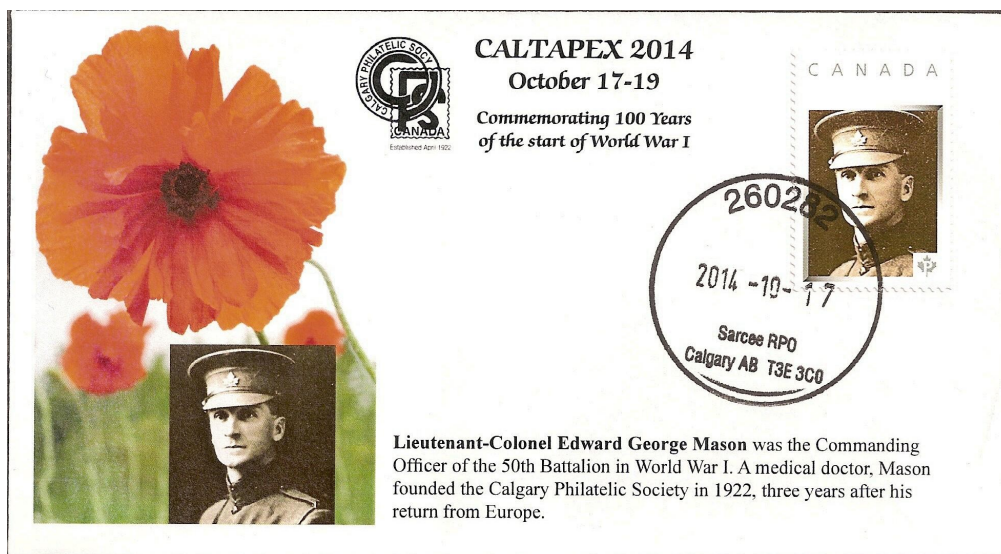
### ATA National Topical Stamp Show

July 31-August 2  
Monarch Hotel, Clackamas, OR

### APS StampShow

August 20-23  
DeVos Convention Center, Grand Rapids, MI

# CALTAPEX 2014



— by Dale Speirs

[*Ed note: Portions of this article are reprinted by permission from Calgary Philatelist, December 2014. For those who do not know, Dr. E.G. Mason was the founder of the Calgary Philatelic Society.*]

On Saturday, October 11, an underground electrical substation exploded in the west end of Calgary's downtown core. The fire, which completely destroyed the substation, traveled through the tunnels as the insulation on the power cables caught fire. After firefighters finally got the blaze out, Enmax crews worked around the clock to build a new substation from scratch and replace 3.5 kilometers of burnt cables. Five thousand residents and 1,200 businesses, including the Central Post Office, were without power for a week.

The Calgary Philatelic Society Show Committee was almost overtaken by the events. CALTAPEX 2014 was held October 17 to 19 at the Kerby Centre, on the south side of 7 Avenue SW directly on the edge of the blackout zone.

What made me nervous in my capacity as the show catalogue editor was that our printer was in the blackout zone. I dropped off the final copy for the catalogue on Friday, the day before the explosion, for pickup on Tuesday morning. When I went by the shop that day, they were jury-rigging generators. Fortunately, the power came back just in time for them to complete the printing. I picked up the catalogues on Friday an hour before the show opened.

Despite the scare of a major blackout, the show opened on time. The theme this year commemorated the centennial of World War One. The show featured 15 competitive and four non-competitive philatelic exhibits. The bourse included 13 Canadian dealers.

On Friday, after the show closed for the evening, a group of exhibitors stayed behind to enjoy a Chinese meal while listening to Chief Judge David Piercey discuss exhibit planning and layout.



The Awards Banquet was held Saturday evening at the Danish-Canadian Club. Sunday's big event was the auction, but there was also a judges' critique. The dealer bourse had steady business all weekend, and there was good customer turnout.

Peter Fleck designed a beautiful full-color show cover as shown above. He then arranged for two Picture Postage stamps, one with Dr. Edward George Mason's portrait and the other with red poppies. Dale Speirs had the covers cancelled on the first day of the show at the Sarcee retail postal outlet in the 7-Eleven at 37 Street SW and 46 Avenue, a few blocks away from where the Sarcee Field Camp once was during World War One. Dr. Mason commanded the 50th Battalion at the camp, so the postmark was very appropriate.

# Youth in Philately

— by Lisa D. Foster

The number of youth in philately appears to be dwindling as evidenced by the limited number who visited the youth table this year at SEAPEX.

In addition to the regular philatelic exhibition advertisements, we had sent invitations to local schools, youth clubs, and Boy Scout troops. The SEAPEX President made personal visits to the Girl Scouts Headquarters. We placed posters at libraries and community centers. Nevertheless, youth attendance was disappointing.

The show had one exhibit entered by a youth from outside the Pacific Northwest, thanks to the solicitation and encouragement by Vesma Grinfelds, AAPE Youth Champion of Champions Director.

Despite the limited attendance, youth played important roles at SEAPEX this year. Members of a local Cub Scout Troup provided the Flag Detail for the Fort McHenry First Day of Sale Ceremony.



Conner Wrynn and Cameron Kwartin, Cub Scout Pack 460, salute the flag during the National Anthem

Although none of the attendees participated in an activity to design their own cachet for the Fort McHenry First Day Cover, the youth seemed to enjoy rummaging through the free stamp bins, coloring the postage stamp activity pages (available online at google images) and “Guessing the Number of Stamps in the Jar” (where the closest number won all the stamps in the jar).

Anyone who is interested in sharing ideas for publication in this column, please send them to Lisa Foster ([fosteld@gmail.com](mailto:fosteld@gmail.com)). Topics to consider include information regarding how you promote youth in philately either individually or in your club, ideas to encourage youth attendance at shows, upcoming youth activities, and any



suggestions you may have to share with others. If your club has youth members, consider forwarding information about their participation and accomplishments for inclusion in this quarterly column.

The SEAPEX 2014 “Stamp” Spangled Banner T-Shirt design was conceptualized by Evergreen Stamp Club Youth member David Levy

## SEAPEX 2015 Stamp Design Youth Contest

Design a stamp to enter in the SEAPEX 2015 Stamp Design Youth Contest. SEAPEX will use the chosen stamp designs to create postage used for the exhibition’s mailings. The exhibition theme will celebrate the 75th anniversary of “Gallopig Gertie” referring to the original Tacoma Narrows Bridge that collapsed in 1940.



Draw a picture no larger than 8×11 inches. Do not write words or numbers on your design. You may draw your picture vertical or horizontal. Make sure to include your name and contact information. Place it on the back of the picture, if you mail it. Scan and email the picture to [SEAPEX@comcast.net](mailto:SEAPEX@comcast.net), or mail it to SEAPEX at 27111 167th Pl. SE, Suite #105-114, Covington, WA 98042.

(All entries become the property of SEAPEX: Seattle Philatelic Exhibition. Winners must consent to using their names and artwork in its publicity, website, and exhibits. Entrants and their families will not receive compensation for the use of designs submitted. By submitting an entry to this contest, the entrant is agreeing to transfer any copyrights of his/her artwork to SEAPEX for exclusive use for marketing, education, and publicity materials.)

# Oregon Stamp Society Perfin

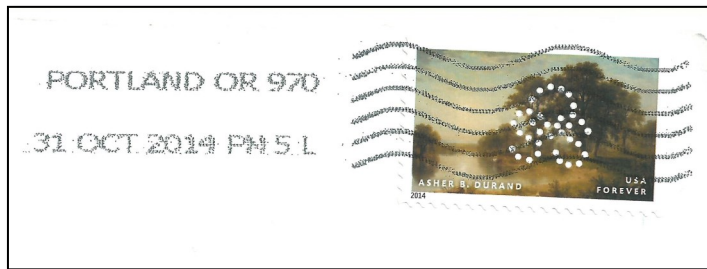
— by Eric Hummel

[Ed. note: As your editor, I receive issues of the newsletters and activity notifications published by the member clubs of the Federation. Last month, *The Album Page*, published by the Oregon Stamp Society in Portland arrived in my mail franked with the perfin stamp pictured nearby. I asked the editor, Caroline Brandt, for more information about it and the club president, Eric Hummel, responded. I thought other members of the Federation would also find this interesting.]

Back in the late 1970s, there was an active group of pre-cancel collectors in OSS. Some of *The Album Page* newsletters were actually mailed from some small post offices where members of the group were able to get the Postmasters to produce their own “local” precancels.

This grew into the idea by others that we could have a perfin punch made for use in mailing the newsletter. They came up with the design and finally found a company in England to make the machine for us. It has been in somewhat continuous use since the first stamps were perforated with our initials in 1981. We even have extra “pins” in case one ever breaks—none have so far.

At the time the purchase of the machine was contemplated, the OSS Board stipulated that OSS perforated stamps would only be used on newsletter mailings. With only two exceptions I am aware of, this has been followed.



No permit is required as far as I know. We mail through any post office we want, which is not the case with a “mailer’s permit” that is tied to a specific post office. We did have a mailer’s permit in the 1980s (and perhaps into the early 1990s). It enabled us to use our own canceling device and precanceled postage (including precanceled fractional bulk rate/non-profit rate postage).

I believe we also used the device to cancel regular stamps. As I remember the story, the only restriction was on the type of ink that we had to use with the cancel. I believe all of the mail had to go through the business bulk mail processing office at the downtown Portland Main Post Office (I am not 100 percent certain of this). Unfortunately, the cancel device has been lost, probably in one of the numerous turnovers of mailing responsibilities over the years.

The perfin punch was first used on a set of four cacheted covers postmarked from the Portland Zoo Railway—the last operating RPO cancel (and still available I think).

Celebrate the  
New Year!

Support  
SEAPEX 2015!

Come down and join SEAPEX at Reuben's  
Brews for Thank You Thursday,  
located in Ballard  
at 1406 NW 53rd St, Suite 1A,  
Seattle WA 98107-3731.

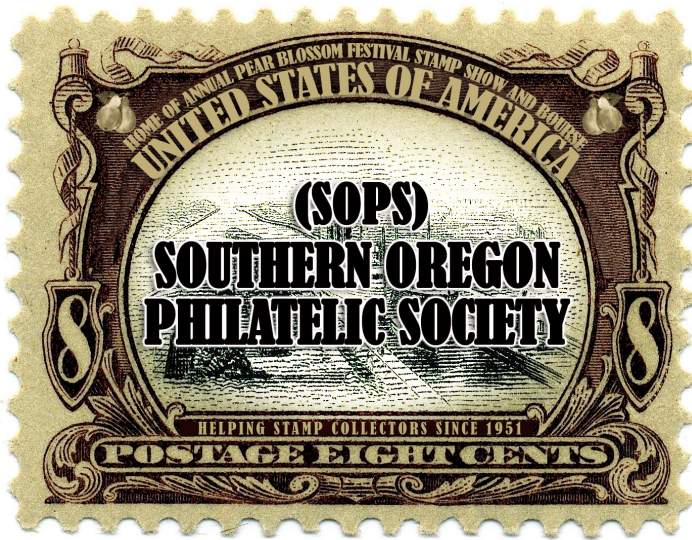
Thursday January 29, 2015  
3:00 p.m. to 9:00 p.m.

*Reuben's Brews will donate **\$1.00** to SEAPEX for each pint sold in its taproom.*

# New SOPS Logo

— by Nancy Swan

[Ed. note: Nancy Swan is the Southern Oregon Philatelic Society Librarian and Temporary Editor of their newsletter, The Philatelic Reminder. The logo is copyrighted by its creator and is used with permission]



The logo is by a relatively new member, Winfield Frazier IV, a gung-ho retired Navy photographer. He and wife Claire presented our September program on their participation in the May APS cruise to Alaska. Win has volunteered to be club photographer and work on a website newsletter.

The club prepared a display for one of our Medford public library cases for October is Stamp Collecting Month. We are fortunate to get a space once or twice a year to promote the club and philately. David Brumback, Joan Carroll, Larry Crain, Jim Gandee, and John Zenz provided exhibit pages.

I just finished an article for *Philagems* on Jackson County, Oregon post offices named for minerals. Now I am preparing a presentation for January on Jackson County Post Offices named for people to present to the Rogue Valley Genealogy Society.

On December 4th, the club will hold its Pot Luck Christmas Party at St. Mary's High Library starting at 6:30 PM.

## PIPEX 2015

MAY 8, 9, 10, 2015

Red Lion Hotel on the River at Jantzen Beach  
909 N Hayden Island Drive, Portland 97217

SPECIAL SHOW ROOM RATE      FREE PARKING

FREE HOTEL AIRPORT SHUTTLE

### Convening Societies:

American Society of Polar Philatelists  
Military Postal History Society  
Universal Ship Cancellation Society  
Civil Censorship Study Group

40 Dealers    240 Frames of Exhibits  
USPS Sales Booth

Cachet Makers Bourse    Youth Activities  
Meetings & Seminars

Stamp Buddy: Beginning & Returning Adult Collectors  
Boy Scout Stamp Collecting Merit Badge Program

Harmer Schau Auctions Northwest Auction

More details on the show website:  
[www.pipexshow.org](http://www.pipexshow.org)

## SEAPEX 2015

September 11–13, 2015

\*\*\*\*\*

### Tukwila Community Center

12424 42nd Avenue South

Friday: 11:00 AM to 5:00 PM

Saturday: 10:00 AM to 5:00 PM

Sunday: 10:00 AM to 4:00 PM

<http://www.seapexshow.org>

25+ dealers, 160 frames of exhibits, cachetmakers bourse, free stamp evaluations, youth activities, Boy Scout merit badge, society chapter meetings, presentations. Free admission.



---

## Club Activities

The *Air Mail Northwest* newsletter of the **American Air Mail Society—Northwest Chapter** reports plans for their holiday potluck on December 6. It also includes reports on the Aerophilately 2014 and SEAPEX 2014 shows as well as a description of an interesting flight cover. Dues are \$8 per year.

*The Anchorage Philatelist* published by the **Anchorage Philatelic Society** reports on plans for its Christmas Party on December 10. It also contains links to Northwest shows. The club will sponsor a show (APEX) 6–8 March 2015. Dues are \$10 per year, \$15 for families, and \$2 for youth. See their website at [www.anchoragephilatelic.org](http://www.anchoragephilatelic.org).

The **Bellingham Stamp Club** publishes *The Bellingham Philatelist* newsletter (print only). They report plans for their annual Christmas dinner. Their November meeting included a presentation about circuit books.

The **British Columbia Philatelic Society** publishes *BC Philatelic Newsletter*. They held their annual show (VANPEX) 26–27 September. Their next monthly auction will be December 17. Dues are \$20 per year for individuals, \$30 for families, and \$7.50 for students younger than 18. See details at their website: [www.bcphilatelic.org](http://www.bcphilatelic.org).

The **British North America Philatelic Society** publishes the *West Coast Express*. Dues are \$10 per year for all. See their website: <http://bnaps.org/regional/pnwr/pnw2.htm>.

The *Calgary Philatelist* published by the **Calgary Stamp Society** features articles on the postal history of Alberta and reports on their CALTAPEX show (see page 5). Their Christmas social is planned for December 3. Dues are \$15 plus \$10 initiation fee. See details at their website: [www.calgaryphilatelicsociety.com](http://www.calgaryphilatelicsociety.com).

The **Edmonton Stamp Club** *Bulletin* for December contains an article about Bruce Chalmers, aka Conde, responsible for many issues from the “sand dunes” countries. It also features Part 6 of an article about the formation and occupation of Eastern Silesia following WWI. The club will sponsor their **National Stamp Show** on March 28–29, 2015. Dues are \$25 per year for individuals, \$35 for families. See [www.edmontonstampclub.com](http://www.edmontonstampclub.com).

The **Evergreen Stamp Club** November newsletter reports the demise of the bimonthly Fenwick bourse due to the passing of Arv Morrow. The club plans to hold their Christmas dinner on December 17. Dues are \$20 per year. See their website at [www.evergreenstampclub.org](http://www.evergreenstampclub.org).

The **Greater Eastside Stamp Society** publishes the *GESS Newsletter*. They report plans for their Christmas dinner

on December 4. The club sponsors GESSPEX scheduled for January 31–February 1, 2015. See their website at <http://home.comcast.net/~g-e-s-s/>.

The **Greater Eugene Stamp Society** *Echoes* newsletter features an article on American historical figures on stamps. The society held their fall show on September 20. Dues are \$15 per year, \$5 for youth under 18. See their website at [www.greatereugenestampclub.org](http://www.greatereugenestampclub.org).

The **Inland Empire Philatelic Society** publishes *The Lilac Hinge*. They held their annual donation auction November 25 with proceeds supporting a retirement home. Their annual Christmas dinner is planned for December 9. Dues are \$10 per year for individuals, \$15 for families, and \$5 for youth under 18. See their website at [www.ieps-stamps.com](http://www.ieps-stamps.com).

The **Northwest Philatelic Library** newsletter, *Book Reports*, is somewhat behind in publication. The library recently received a significant donation of Chinese literature. They are seeking contributions of philatelic literature and materials. Dues are \$12 for those 18 and older, \$3 for under 18. See their website: <http://www.nwpl.org/>.

*The Album Page* November newsletter published by the **Oregon Stamp Society**, contains articles on interesting side trips while visiting stamp shows. Each edition has an article on the featured cover of the month. See the story on page 7. Dues are \$24 per year for regular members, \$16 for associate members who reside outside the local area. See their website at [www.oregonstampsociety.org](http://www.oregonstampsociety.org).

The **Pacific Northwest Postal History Society** publishes a quarterly journal titled *The Oregon Country* that covers the entire spectrum of Northwest postal history and includes special research projects. Dues are \$15 per year. See [www.pacificnorthwestpostalhistorysociety.org](http://www.pacificnorthwestpostalhistorysociety.org).

The **Peace Arch Stamp Club** is the newest member of the NWFSC. They do not publish a newsletter, but they offer a variety of activities including club auctions and interclub trading. Dues are \$10 per year. See <http://stampclub.ca/peacearch>.

The **Salem Stamp Society** newsletter, *Willamette Stamp & Tongs*, contains news of club activities. They held a large auction on November 12. Champion exhibitor George Struble offers advice on preparing exhibits. Their Christmas dinner party is scheduled for December 10. Dues are \$10 per year for individuals, \$15 for couples, and \$20 for families. See their website at [www.salemstampsociety.org](http://www.salemstampsociety.org).

— continued on page 10

# Alaska State Fair Report

— by David Schwantes

[Ed note: This article is extracted from *The Anchorage Philatelist*, September 2014.]

The Anchorage Philatelic Society had another successful year at the state fair. Although we never come out very much ahead financially, it is successful in other ways. We educate a lot of people and sometimes gain new members. We talk to a lot of people who have inherited collections and do not know what to do with them. However we can help them is important. We also make the hobby known to people who just stop in to look.



We had sales of \$1,832 this year, about \$200 more than last year. We sold more fair covers than we usually do, which is good. Our best day for sales was Sunday, August 31, with \$447, and our worst day was Thursday, the 28th with only \$18. The ups and downs depend a lot on the weather and attendance.



We had many club members cover five or six-hour work shifts each of the 12 days, with several taking two or more. Many thanks to the following members:

Ronda Orr, Don Faulkenburry, Ted and Judy Ireton, Stevan and Chris Cady, Pat and Theresa Hoffmann, David and Donna Thompsen, Duane Heverling, Bill Kirk, Ruth Farnsworth, and myself. Hopefully we will continue to be there in the future

## Club Activities (from page 9)

The **Sno-King Stamp Club** publishes a monthly newsletter, *Sno-King Stamp Club Philatelic News*. Their President, Larry Mann, has moved to the Spokane area and resigned his position. New officers will be installed at their Christmas dinner on December 10. Dues are \$8 per year, \$5 for youth under 18. See their website at <http://sno-kingstampclub.freehostia.com>.

The **Southern Oregon Philatelic Society** is developing a new website and has a new editor for its newsletter, *The Philatelic Reminder* (see the report on page 9). The December edition contains articles about the history of the club library and perfin collecting. Their Christmas party is planned for December 4. The club sponsors a show (SOPEX) scheduled for April 11–12, 2015.

The **Strait Stamp Society** publishes a bi-monthly newsletter, *Strait Stamp Talk*. It contains news about past and upcoming club activities. The December show and tell will focus on the letter “X.” The club has no dues, but accepts donations. See their website at [www.straitstamp.org](http://www.straitstamp.org).

The **Sidney Stamp Club** does not publish a newsletter. They are planning a Christmas meeting on December 13. Dues are \$5 per year.

The **Tri-Cities Stamp Club** publishes *The Triangle* newsletter. Their Christmas party is planned for December 17. They held their annual stamp show on October 4–5 in Richland, Washington with ten dealers. A special pictorial cancel and show cachet is available. Contact the club at P.O. Box 6228, Kennewick, WA 99336.

The **Vancouver Island Philatelic Society** publishes its newsletter, *The Guideline*, ten times per year. They plan to hold their Christmas party on December 18. Dues are \$20 per year. See their information at [www.vicstamps.com/vips](http://www.vicstamps.com/vips).

The **Washington State Philatelic Society** does not publish a newsletter. They are planning a Christmas party on December 11.

[Ed. note: If you would like to have news about your club activities and upcoming plans published in future columns, please email either me ([jackcongrove@comcast.net](mailto:jackcongrove@comcast.net)) or Lisa Foster ([fosteld@gmail.com](mailto:fosteld@gmail.com)) with the details.]

---

# EDMONTON STAMP CLUB

## 2015 SPRING NATIONAL STAMP SHOW



**March 28-29, Saturday 10-5, Sunday 10-4**

**- NEW LOCATION -**

**Central Lion's Recreational Centre**

**113 St & 111 Ave, Edmonton, Alberta**

**Stamp Dealers from across Canada**

**Stamp Circuit Books, Door Prize Draw, Junior Stamp Table**

**National-level Competitive Stamp Exhibits (WSP)**

*liuszmoser@gmail.com*

**Free Admission, Free Stamp Evaluations**

**The theme of this year's show is**

**The 100th Anniversary of the 49th Battalion Loyal Edmonton Regiment**

**For information: *eddykstra@shaw.ca* [www.edmontonstampclub.com](http://www.edmontonstampclub.com)**

---

## Mount Rainier National Park

— *by Jack R. Congrove*

Mount Rainier is a massive dormant stratovolcano located 54 miles southeast of Seattle. The mountain and area encompassing 369 square miles around it was established as the fifth US National Park in 1899. The mountain is 14,410 feet high and is covered by 25 glaciers, one of which is the largest by volume and another, the largest by area in the continental US. It is the highest point in the Cascades.

The park is a popular recreational area for hiking, skiing, and mountain climbing, receiving about 1.8 million visitors per year. Almost the entire park is preserved as wilderness.

The park itself is a National Historic Landmark and in addition, it contains 42 locations designated on the National Register including four other National Historic Landmarks. The most popular site is the Paradise Inn.

Paradise holds the Cascade record for seasonal snowfall (1,122 inches) and most snow on the ground (367 inches).

In 1934, the US Post Office issued a series of ten stamps in denominations from 1 to 10 cents featuring images of the country's National Parks. Mount Rainier appeared on the 3c value. These stamps were perforated 11. The 3c value was later issued as an imperforate souvenir sheet of six to commemorate the 1934 American Philatelic Society exhibition.

In 1935, the Farley special printings included reissues of the National Parks stamps imperforate and without gum. The USPOD did gum full sheets of these stamps for collectors who sent them in.

Mount Rainier  
US, Sc#742, 1934



## UPCOMING STAMP SHOWS / BOURSES

SHOW DATES			Major shows in bold / PNW shows in <i>italic</i>	Revised: 11/21/2014	
FRI	SAT	SUN	SHOW NAME	LOCATION	TYPE
28-Nov	29-Nov		<i>Vancouver Stamp Fair</i>	Vancouver, BC	Bourse
	6-Dec	7-Dec	<i>Salem Coin &amp; Stamp Show</i>	Salem, OR	Bourse
	6-Dec	7-Dec	PENPEX (Sequoia Stamp Club)	Redwood City, CA	Show
		14-Dec	<i>Fenwick Stamp &amp; Coin Show</i>	Renton, WA	Bourse
	20-Dec		<i>Portland Winter Stamp Fest</i>	Portland, OR	Bourse
<b>2015:</b>					
	3-Jan	4-Jan	Sacramento Stamp Faire	Sacramento, CA	Bourse
9-Jan	10-Jan	11-Jan	ORCOEXPO Stamp Show	Anaheim, CA	Show
	17-Jan	18-Jan	Great American Stamp Expo	San Jose, CA	Bourse
<b>23-Jan</b>	<b>24-Jan</b>	<b>25-Jan</b>	<b>SANDICAL (San Diego Co. Philatelic Council) (WSP)</b>	<b>San Diego, CA</b>	<b>Show</b>
	24-Jan		<i>Portland Winter Stamp Fest</i>	Portland, OR	Bourse
	31-Jan	1-Feb	<i>GESSEPEX (Greater Eastside Stamp Society)</i>	Bellevue, WA	Show
	7-Feb	8-Feb	<i>Greater Seattle Postcard &amp; Paper Show</i>	Kent, WA	Bourse
		15-Feb	<i>Sno-King Stamp Club Show</i>	Everett, WA	Bourse
<b>13-Feb</b>	<b>14-Feb</b>	<b>15-Feb</b>	<b>APS AmeriStamp Expo (WSP)</b>	<b>Riverside, CA</b>	<b>Show</b>
<b>20-Feb</b>	<b>21-Feb</b>	<b>22-Feb</b>	<b>ARIPEX (Arizona Fed. Stamp Clubs) (WSP)</b>	<b>Mesa, AZ</b>	<b>Show</b>
6-Mar	7-Mar	8-Mar	<i>APEX (Anchorage Philatelic Society)</i>	Anchorage, AK	Show
	14-Mar	15-Mar	<i>FRESPEX (Fresno Philatelic Society)</i>	Clovis, CA	Show
	21-Mar		<i>Eugene Spring Stamp Fest (GESS)</i>	Eugene, OR	Bourse
		22-Mar	<i>Salem Spring Stamp Show (Salem Stamp Society)</i>	Salem, OR	Bourse
	<b>28-Mar</b>	<b>29-Mar</b>	<b>Edmonton Spring National Stamp Show (WSP)</b>	<b>Edmonton, AB</b>	<b>Show</b>
	28-Mar	29-Mar	<i>Inland Empire Philatelic Society Apple Blossom</i>	Spokane, WA	Show
	11-Apr		<i>John D. Arn Stamp Symposium</i>	Moses Lake, WA	Education
	18-Apr	19-Apr	<i>Evergreen Stamp Club Spring Bourse</i>	Kent WA	Bourse
	18-Apr	19-Apr	<i>Bellingham Coin, Card, and Stamp Show</i>	Bellingham, WA	Bourse
<b>24-Apr</b>	<b>25-Apr</b>	<b>26-Apr</b>	<b>WESTPEX (WSP)</b>	<b>Burlingame, CA</b>	<b>Show</b>
<b>8-May</b>	<b>9-May</b>	<b>10-May</b>	<b>PIPEX (WSP)</b>	<b>Portland, OR</b>	<b>Show</b>
<b>15-May</b>	<b>16-May</b>	<b>17-May</b>	<b>ROMPEX (Rocky Mtn. Phil. Exhibition) (WSP)</b>	<b>Denver, CO</b>	<b>Show</b>
	21–26 Jun		APS Summer Seminar 2015	Bellefonte, PA	Education
	18-Jul	19-Jul	<i>Evergreen Stamp Club Summer Exhibition</i>	Kent WA	Show
	27-Jun	28-Jun	<i>Greater Seattle Postcard &amp; Paper Show</i>	Kent, WA	Bourse
<b>31-Jul</b>	<b>1-Aug</b>	<b>2-Aug</b>	<b>ATA National Topical Stamp Show (WSP)</b>	<b>Clackamas, OR</b>	<b>Show</b>
<b>21-Aug</b>	<b>22-Aug</b>	<b>23-Aug</b>	<b>APS StampShow (begins 20-Aug) (WSP)</b>	<b>Grand Rapids, MI</b>	<b>Show</b>
<b>11-Sep</b>	<b>12-Sep</b>	<b>13-Sep</b>	<b>SEAPEX Seattle Philatelic Exhibition</b>	<b>Tukwila, WA</b>	<b>Show</b>
	27-Sep	28-Sep	<i>Inland Empire Philatelic Society Apple Harvest</i>	Spokane, WA	Show
<b>2-Oct</b>	<b>3-Oct</b>	<b>4-Oct</b>	<b>SESCAL (Fed. Phil. Clubs of S. California) (WSP)</b>	<b>Los Angeles, CA</b>	<b>Show</b>
	18–28 Oct		APS StampCruise (Panama Canal & W. Caribbean)	Fort Lauderdale, FL	Cruise
<b>2016:</b>					
	28 May–4 Jun		<b>World Stamp Show NY 2016</b>	<b>New York, NY</b>	<b>Intl Show</b>
<b>5-Aug</b>	<b>6-Aug</b>	<b>7-Aug</b>	<b>APS StampShow (begins 4-Aug) (WSP)</b>	<b>Portland, OR</b>	<b>Show</b>
<b>Repetitive Events</b>			<i>Rose City Stamp Fair (2nd Saturday OSS clubhouse)</i>	Portland, OR	Bourse
			<i>Collector's Corner (4th Saturday OSS clubhouse)</i>	Portland, OR	Bourse