

# Federated Philatelist

Newsletter of the Northwest Federation of Stamp Clubs

No. 210, March 2015

## PIPEX 2015, May 8-10

— by *Lucien Klein*

PIPEX 2015, an American Philatelic Society (APS) World Series of Philately event sponsored by Portland Philatelic Exhibitions on behalf of Oregon Stamp Society and the Northwest Federation of Stamp Clubs, will take place May 8-10 at the Red Lion Hotel on the River at Jantzen Beach, located at 909 N Hayden Island Drive in Portland Oregon.

Parking is free for those who drive. For those who fly into Portland, the hotel offers a free on-call airport shuttle (you must say that you are attending PIPEX for the shuttle to be free). The hotel location, just off I-5 at exit 308 and on the bank of the Columbia River, makes it easy for you to come and go to the show and to attractions in the Portland and Vancouver, Washington area while having a pleasant stay.

The PIPEX show hotel room rate is \$99 per night. Call 503-283-4466 for reservations. On Sunday, the hotel offers an excellent Mother's Day Brunch, for which reservations are required. Last year, it sold out and was turning people away. So, if you are interested, make your brunch reservation early.

Admission to the show is free. Show hours are 10 AM to 6 PM on Friday and Saturday, and 10 AM to 4 PM on Sunday. The show will offer 40 or more dealers, 4000 pages of exhibits, a USPS sales booth, a cachetmakers bourse, StampBuddy for beginning or returning adult collectors, a youth area (that will offer free stamps by the bucket each day), and Grandma's Attic.

National and international societies holding their annual meetings at the show are: American Society of Polar Philatelists, Military Postal History Society, Universal Ship Cancellation Society, and Civil Censorship Study Group.

Other societies expected at the show include: Northwest Philatelic Library, Northwest Chapter of the American Airmail Society, Pacific Northwest Postal History Society, Oregon Stamp Society, and Salem Stamp Society.

Harmer-Schau Auctions Northwest will hold an auction at the show on Sunday, May 10. Visitors may view auction lots each day of the show.

Exhibits will be judged by a panel of five judges accredited by the APS: Timothy Bartshe of Colorado is the chair. Other judges are: Janet Klug of Ohio; Hal Vogel of New Jersey; Ed Kroft of Vancouver, B.C.; and Steve Zwilling of Maryland.



PIPEX 2015 Major Awards

The multi-frame Grand Award winner is expected to compete in the Champion of Champions competition at Stamp Show 2015 in Grand Rapids, Michigan, August 20-23, 2015. The major exhibit awards are shown above. L to R: 7.5-inch maple burl vessel, 12-inch maple vessel with carved design, and 10-inch walnut bowl with maple lid. The order of presentation is yet to be established.

The show awards dinner will take place Saturday evening at the Red Lion Hotel. Reservations are required and can be made by contacting Steve Brandt at: [zbear@att.net](mailto:zbear@att.net). Early reservations are encouraged because the event may sell out before the show opens. — *continued on page 3*

### Inside

PIPEX 2015 – Lucien Klein .....	1
From the Editor's Desk .....	2
Chairman's Notes .....	3
Arn Philatelic Symposium – David Harris .....	4
Starbuck Washington – Jack R. Congrove .....	5
Youth in Philately – Lisa D. Foster .....	6
SEAPEX Approved as WSP – Jack R. Congrove .....	7
Closed Album: Thomas E. Ward .....	7
NWFSC Award Nominations – Lawrence Clay .....	8
Club Activities .....	9
PIPEX Agreement .....	10
Stamp Show Calendar .....	12

**Editor**

JACK R. CONGROVE  
P.O. Box 33092  
Fort Lewis, WA 98433  
253-564-0969

jackcongrove@comcast.net

**Northwest Federation  
of Stamp Clubs**

<http://www.nwfedstamps.org>

**Chairman of Board of Directors**

LAWRENCE CLAY  
P.O. Box 6228  
Kennewick, WA 99336-0228  
Phone: 509-735-3731  
lclay3731@charter.net

**Board of Directors**

ERIC A. RANGER  
New Westminster, British Columbia

KEITH SPENCER  
Edmonton, Alberta

LAWRENCE CLAY  
Kennewick, Washington

ERIC HUMMEL  
Phoenix, Oregon

**Executive Secretary**

Vacant

**Treasurer**

ALEX HADDEN  
#19 – 7651 Francis Road  
Richmond, B.C. V6Y1A3  
Phone: 604-272-2614  
alex-hadden@shaw.ca

**Judging Chairman**

DICKSON PRESTON  
Seattle, Washington

**History Chairman**

LEONARD LUKENS  
Phoenix, Oregon

**Webmaster**

DAVID HARRIS  
Medical Lake, Washington  
sqpiano@gmail.com



Out first edition of 2015 includes news about many of the upcoming stamp shows here in The Great Northwest. Some shows such as APEX and the Edmonton Spring National Stamp Show are happening very shortly. We expect to have reports on their activities in the next edition.

On page 1, you will find an article about the plans for PIPEX, a World Series of Philately show sponsored by the Northwest Federation. In addition, on page 10 is a copy of the recently signed agreement between the Federation and Portland Philatelic Exhibitions (PPE), the organization that puts on the PIPEX show. The new agreement assures the production of PIPEX in Portland through the year 2019.

The other big news that is special to me for reasons that will be obvious, is that the American Philatelic Society has approved the application for SEAPEX to become a national-level World Series of Philately exhibition. See the full report on page 7.

I regret to announce the recent passing of two Northwest philatelists who should be familiar to many of the Federation members. On page 7, you will find the notice for Thomas E. Ward, who was the NWFSC contact for the Washington State Philatelic Society for many years up to the time of his passing.

Also, it has been reported that long-time Northwest stamp dealer, Jack Darkins, who operated Rogue Valley Philatelics, has passed away. Jack received the Federation Member Club Service Award in 2012. Jack was one of the first dealers I got to know when I moved to this area in 1992. He had been involved with philately for many decades even then and always had interesting stories to share.

I would like to mention some policies regarding the newsletter because I received some questions about terminology. When an article refers to an event as a “show,” that means it includes exhibits in addition to dealers and other activities. Otherwise, it will be called a “bourse,” which means it only has dealers, buying and selling.

While on the subject of policies, the Chairman and I have come to an agreement that our distribution of *The Federated Philatelist* will be by electronic means (email) only. We will continue to rely on the member organizations to make further distribution to all of their members.

Also, as you can see from the contents of this issue I have not received any new articles from our Federation members. While I enjoy writing articles for this newsletter and the other journal I edit, as I stated when I took over the editorship, this is not the *Congrove Newsletter*. It supports the Northwest Federation and it should contain input from members across the whole federation.

Please look at your collection and send me a couple paragraphs describing an item you find interesting. I will publish it in upcoming editions. **Input for the next edition is due to me not later than 15 May 2015.**

— Jack R. Congrove, Editor

### Club Exhibits

Each year PIPEX features single frame exhibits produced by local stamp clubs. This year the club exhibits will be judged by a separate jury using standards established by the show committee. The competition is sponsored by the Northwest Federation of Stamps Clubs.

The club that enters the winning club exhibit will hold until the next PIPEX, which is 2017, a large handsome silver cup that was used as a PIPEX award decades ago and has been returned to the Federation.

The entry fee for club exhibits is \$16 and the expectation is that the applications will exceed the number of available frames, so get your entry form in as soon as possible.

### Volunteers

PIPEX is seeking volunteers to help at the show in the following categories. Please contact Tony Wawrukiewicz ([tonywaw@spiritone.com](mailto:tonywaw@spiritone.com)) if you can help.

*Exhibits.* Assist exhibitors with mounting and demounting their exhibits and closing and fastening the frames.

*Hospitality.* Assist with moving food on a cart from one place to another and setting up hospitality room.

*Youth Activities.* Supervise youth table, answer questions from parents and children, accept and sort philatelic donations, prevent adults from taking stamps reserved for kids.

*Boy Scouts:* Support merit badge activities. Requires successful completion of on-line BSA security course.

*APS StampBuddy:* Provide basic introduction to stamp collecting for adults and serve as guide for tours of the show and exhibits. Offer consultation and advice.

*Grandma's Attic:* Evaluate philatelic material brought by visitors. In most cases, the material will not have much value and the volunteer will recommend donating to charity or youth. Volunteers are not allowed to make offers, or buy items from the public. For valuable items, direct the holder to appropriate dealers.

*Presentations:* Assist with setup of projectors, computers, and other equipment in support of presentations.

*Reception:* Distribution of badges to designated people, under the direction of the show manager.

More PIPEX 2015 information is available on the show website: [www.pipexstampshow.org](http://www.pipexstampshow.org). You may download the exhibitor's prospectus from the website, or request it by mail from exhibit chairman, George Struble, 210 18th St NE, Salem OR 97301.

## Chairman's Notes

How time flies! It won't be long before another PIPEX comes around. So please be sure it is on your calendars.

This newsletter contains a lot of information about PIPEX 2015. I want to particularly emphasize two points. The PIPEX 2015 show needs volunteer help, so please seriously consider setting aside a couple of hours during your show visit to help out. Let us know when you might be available.

[*Ed. note: Tony Wawrukiewicz is the PIPEX volunteer coordinator. Contact him at ([tonywaw@spiritone.com](mailto:tonywaw@spiritone.com))*]

Second, the NWFSC announces its annual awards at PIPEX. Please let me know as soon as possible your recommendations for any of the awards.

The annual general meeting of the NWFSC will again be held on Saturday morning at PIPEX 2015. Please be sure that your club is represented. Each club has one vote on any business that is conducted.

The NWFSC also sponsors another outstanding event. This is the 25th Annual Inland Empire Philatelic Symposium to be held on April 11th in Moses Lake, Washington. There will be four excellent speakers, a silent and a live auction, and lots of fellowship. I have been privileged to attend at least 20 of these symposiums and have enjoyed every one. So I urge you to attend. Go to the NWFSC website ([www.nwfedstamps.org](http://www.nwfedstamps.org)) for details.

[*Ed. note: See page 4 for an article describing the details of this symposium.*]

I look forward to seeing and visiting with many of you at PIPEX 2015.

— Lawrence Clay, Chairman



# Arn Philatelic Symposium

— by David Harris

The agenda for the 25th annual John D. Arn Philatelic Symposium at Moses Lake, Washington has been set and it is a good assortment of speakers and events. The meeting will take place on April 11th at the Best Western hotel in Moses Lake, Washington, and I am very pleased to report there is no increase in room or meal prices this year. Our speakers will be coming from California, Missouri, and Washington State.

Bill Dwyer, from Washougal, Washington, and a member of the WESTPEX organizing committee, will be giving a presentation on, “The Philately of Air Pioneers in France.” Bill was scheduled to appear last year, but had to withdraw due to health concerns.

Carol Edholm from Mountlake Terrace, Washington, and well known to past attendees of the Moses Lake Symposium, will give a presentation on “Experimental Postmarks of India.”

David McNamee from Alamo, California (east of San Francisco and South of Walnut Creek), has graciously accepted an invitation to speak at Moses Lake in addition to his very busy duties with the American Philatelic Society as Chairman of the APS Committee on Accreditation of National Exhibitions and Judges (CANEJ). His topic will be, “The conquest of the Zulu Nation 1877–1907.”

Henry Sweets from Hannibal, Missouri, has been associated with the Mark Twain Boyhood Home & Museum in Hannibal since 1978, and has been Director of the museum that entire time. He is also a recognized scholar of Mark Twain. He is honoring us with his appearance at his own expense and his topic will be, “Mark Twain First Day—Changing With the Times.”

We will have our usual enjoyment of exchanging greetings with fellow attendees whom we have not seen for a year as well as our silent and live auctions, the latter spearheaded by the very knowledgeable Howard Ness from the Inland Empire Philatelic Society in Spokane, Washington. The entire auction will be audited by a team of high-level mathematicians led by Steve Recher from the Tri-Cities Stamp Club in Kennewick, Washington.

Ruth Caswell and I have put a large amount of work into preparations for the 2015 meeting and we sincerely hope as many people attend as possible. There are many collectors who may not know about this meeting, and we hope to get more folks from Oregon, Washington, Idaho, Montana, and our neighbors in British Columbia and Alberta more involved.

Please talk it over at your stamp meetings and encourage your fellow collectors to attend. We guarantee that everyone will have a good time. Programs and registration forms were mailed the middle of January 2015 to all who are on our mailing list. For further information or to register, contact the author at: [sqpiano@gmail.com](mailto:sqipiano@gmail.com).

## UPCOMING SHOWS

### APEX

March 6-8

Senior Activities Center, Anchorage, AK

### VicTopical

March 14-15

Comfort Hotel, Victoria, BC

### Edmonton Spring National Show

March 28-29

Central Lions Recreation Centre, Edmonton, AB

### Inland Empire Apple Blossom

March 28-29

Hilton Garden Inn, Spokane, WA

### SOPEX

April 11-12

Jackson Co. Fairgrounds, Central Point, OR

### WESTPEX 2015 Exhibition

April 24-26

Airport Marriott Waterfront, San Francisco, CA

### PIPEX 2015 Exhibition

May 8-10

Red Lion on the River, Portland, OR

### Evergreen Stamp Club Summer Show

July 18-19

Kent Commons, Kent, WA

### ATA National Topical Stamp Show

July 31-August 2

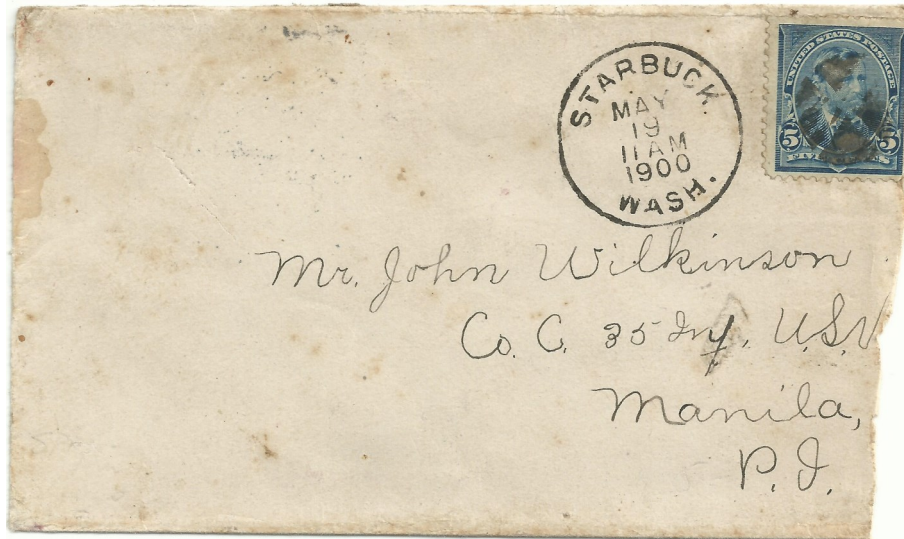
Monarch Hotel, Clackamas, OR

### APS StampShow

August 20-23

DeVos Convention Center, Grand Rapids, MI

# Starbuck, Washington



— by Jack R. Congrove

The postmark on this roughly opened scruffy cover caught my eye due to its resemblance to the name of a well-known Seattle purveyor of caffeinated products. It also has a tie-in to a US military action little remembered today.

The cover was mailed at Starbuck, Washington on 19 May 1900, franked with a five cent Ulysses Grant stamp (Sc#281) that paid the one ounce rate for an overseas letter. It received an 11:00 AM circular date cancel.

On the reverse is a Tacoma, Washington transit mark dated 20 May 1900 at 2:30 PM. It probably arrived there by train. From Tacoma, it apparently traveled for a month via ship to Manila where a receiving mark was applied by Military Postal Station No. 1 dated 23 June 1900 at 11:00 AM. This marking is partially illegible, but is interpreted from the pattern of the receiving marks then available.

## Starbuck the Town



Starbuck arose in the early 1880s. It is located on the Tucannon River about 20 miles northwest of Dayton in Columbia County two miles south of the Snake River.

Starbuck and Dayton, the county seat, are the only communities in this sparsely populated county.

Its post office was established in 1883. In its early years, Starbuck was a division point on the main line of the Oregon Railroad and Navigation Company. At one time, as

many as 24 trains per day passed through the town. A depot and telegraph office, seven-stall roundhouse, coal and oil bunkers, and maintenance shops there employed large crews and the town also had a hotel and restaurants catering to rail passengers.

The town was named after railroad official William H. Starbuck and was platted on 1 June 1894. In 1900, Starbuck had a population of 215. The Bank of Starbuck opened in 1904 and ran until 1929. Its original brick building is on the U.S. National Register of Historic Places and is currently used as the city hall.

The town was officially incorporated on 18 September 1905. In 1910, a large brick school was built with inside plumbing facilities (still something of a novelty in rural America in those days), and in 1916, it boasted 217 students drawn from the surrounding area.

In 1914, the opening of the High Line Bridge across the Snake River downstream from Lyon's Ferry eliminated some of the train traffic through Starbuck, and after that time it was no longer a railroad division point.

It was a grain-shipping point for a number of years, but the population dwindled steadily until the mid-twentieth century. In 1956, its high school shut down and students were sent to Dayton. In 1961, the railroad station closed. In the 2000 Census, Starbuck had a population of 130.

## Starbuck the Namesake

William H. Starbuck was born in 1827 and died on 29 March 1896. He started business in Boston in 1851. In 1854, he moved to New York and in 1862, he started in business for himself and became a large ship owner.

— continued on page 6

---

# Youth in Philately

— by Lisa D. Foster

Reviewing the December issue, I noted that some of the federation member clubs, including the British Columbia Philatelic Society, Greater Eugene Stamp Society, Inland Empire Philatelic Society, and the Sno-King Stamp Club offer discounted dues for families and students younger than 18 years old.

In December, I sent emails to the above clubs inquiring if the discounted dues for families and youth made a difference. How many youth members the club/society had, what activities did they offer throughout the year, and what else did the club do to promote youth membership?



Youth Activities volunteers assisting youth at SEAPEX 2014

Ruth Stevens from the Sno-King Stamp Club replied that she started collecting stamps with the help of her grandmother when she was six years old. She was sad to report the dues rate had not attracted any families with young people nor did the club have any youth members.

The Evergreen Stamp Club in Kent has two youth members who have attended meetings and assisted at the Stamp Shows with their father, also a member of the club.

In 2015, for the first time in the history of the club, youth memberships were offered and granted. Although it has (not yet) attracted new members, I believe it acknowledges the philatelic interests and participation of young persons and our appreciation for their membership.

Interestingly, I too started collecting when I was around six years old, with the help of my grandfather and my father, both of whom were collectors.

Have you considered bringing your children or grandchildren to your club meetings? Invite them to a meeting when you are scheduled to present on your collecting interests, or if someone else is presenting on a topic they may enjoy.

Students may need volunteer/community service hours for school credit that they could accomplish at a club meeting, bourse, or by assisting with a youth table.

Members of the Greater Eugene Stamp Society have a table at the Springfield library once a month and hand out packets of stamps and information to young collectors.

Separate from the general meeting, the Inland Empire Philatelic Society hosts a Youth Group meeting that takes place the second Saturday of each month at 1:00 PM at Vintage Post Cards and Stamps in Spokane Washington.

Please forward information regarding your club's youth participation and accomplishments to be included in this quarterly column to Lisa Foster ([fosteld@gmail.com](mailto:fosteld@gmail.com)).

---

## Starbuck, Washington (from page 5)

In 1879, he became associated with the Oregon Railway and Navigation Company. In 1888, he became president of the Housatonic Railroad. He was also a director in the New York and New England road.

### John Wilkinson

John Wilkinson was the son of John Wilkinson and Mahala Sayers. He was born on 25 March 1879, in Canada, probably in what is now Durham County, Ontario. The following year, he emigrated as an infant with his parents and four older siblings to Muskegon County, Michigan.

As a young man, he homesteaded in the Peace River area of British Columbia, Canada, near Fort St. John. By 1913, he was living in Monroe, Washington, with his maternal cousins. He apparently had lived in Washington State for some time, as he served from there as a Private in Company C, 35th Regiment, U.S. Volunteer Infantry during the Philippine Insurrection following the Spanish-American War in the late 1890s. This was when our cover was sent.

By 1920, he had returned to Michigan where he worked as a teamster and farmer remaining there until his death on 6 August 1955. He never married, nor had children.

I was able to find out much about this cover except for the person who mailed it. It has no return address and the contents have been removed (probably long ago). Who in Starbuck knew John Wilkinson and would spend five cents to send him a letter? Perhaps since Starbuck was a junction on a busy railroad line, this letter was posted by a relative merely passing through the small town.

The Starbuck post office is still in operation. And no, there is no Starbucks in Starbuck.

---

# SEAPEX Approved as WSP Exhibition

— by Jack R. Congrove

On Thursday, February 19th, the Board of the American Philatelic Society unanimously approved the application of the Seattle Philatelic Exhibition (SEAPEX) to be one of a select number of national-level stamp shows starting this year. This occurred following a unanimous recommendation from the Committee on Accreditation of National Exhibitions and Judges (CANEJ).



The last time that the APS accepted a new World Series of Philately (WSP) national exhibition was in 2000 when the AmeriCover show joined the WSP roster. SEAPEX thus becomes the first new national level exhibition in 15 years.

These shows are generally the largest and most prestigious in the country. In order to be selected, the exhibition must successfully complete a four-year accreditation process and follow rigorous standards set by the APS to maintain their status. The shows offer a bourse (dealers buying and selling), competitive exhibits, meetings and seminars, collector and youth activities, and usually host conventions of one or more philatelic societies.

APS President Stephen Reinhard remarked in advance of the vote that the prospect of adding SEAPEX to the WSP circuit is a positive sign for the hobby. He spoke highly of the organization and individuals producing the show.

SEAPEX joins 30 other national shows including the APS's own annual StampShow and the Northwest Federation's PIPEX show as a WSP exhibition. This status authorizes its adult multi-frame exhibits that receive at least a vermeil medal to apply to be shown at international *Fédération Internationale de Philatélie* (FIP) exhibitions.

The multi-frame grand award winning exhibit at each WSP show is invited to compete in the annual Champion of Champions competition at the summer APS StampShow for the highest national level exhibiting honor available. The single frame grand award winner gets to compete for the single frame Champion of Champions award at the winter APS AmeriStamp Expo.

SEAPEX 2015 will be held at the Tukwila Community Center, just north of SeaTac Airport on September 11–13, 2015. The show will celebrate the 75th anniversary of the Tacoma Narrows Bridge known as "Gallop-in' Gertie," which famously collapsed in a wind storm four months after its completion. The show will offer special postmark designs and envelope cachets.

SEAPEX has arranged with the Residence Inn Seattle South/Tukwila at 16201 West Valley Highway, Tukwila, Washington (<http://www.marriott.com/hotels/travel/seaso-residence-inn-seattle-south-tukwila/>) for a block of rooms at a special show rate of \$109 per night during the period of the show.

Admission and parking are free. The show will have more than 25 dealers and 160 frames of exhibits. It will also host a variety of meetings and seminars, and both USPS and UNPA sales booths. Visit the show website (<http://seapexshow.org>) for exhibit prospectus and application, event schedule, and other details. Also, check it out on Facebook at *Seapex: Seattle Philatelic Exhibition*.

---

## Closed Album: Thomas E. Ward

Thomas Eric Ward, who was the NWFSC contact for the Washington State Philatelic Society, passed away on 21 January 2015. He was born in Santa Monica, California, in 1926 to Eric and Irene, and was the first of four sons.

He graduated from Lincoln High School in Seattle, where he played on the school's first state championship basketball team. Drafted after high school into the Army horse cavalry, he was stationed at Fort Riley, Kansas, alongside his trusted horse "McGenius."

After graduating from the University of Washington with a bachelor's degree in geology, he married Thea, his adoring wife of 64 years, in Seattle in 1950.

He worked for the Army Corps of Engineers for 32 years before retiring in 1981, and was most proud of the work he did constructing Libby Dam in Montana.

He was a devoted member of Broadview Community United Church of Christ and had many hobbies, including stamp collecting and handball.

He is survived by his son Eric (Kim), daughter Tina (Kevin), and son-in-law Robert, as well as seven grandchildren and five great grandchildren. He was preceded in death by his daughter Lisa and brothers Bill and Jack.

---

## New Location

The annual stamp show of the **Tri-Cities Stamp Club** is scheduled for October 3–4, 2015, at a new location. It will be at the "old" M Hotel on George Washington Way in Richland. The show will be held in conjunction with the Tri-Cities Coin Club.

# Northwest Federation Award Nominations

— by Lawrence Clay

The Northwest Federation of Stamp Clubs (NWFSC) has three awards that it may present to qualified individuals annually. These awards are the Northwest Distinguished Philatelist Award, the Federation Meritorious Service Award, and the Member Club Service Award.

The **Northwest Distinguished Philatelist Award** is the Federation's highest award. It may be given to a philatelist from the Pacific Northwest (Alaska, Idaho, Montana, Oregon, Washington, Alberta, and British Columbia) who has distinguished himself or herself as an exhibitor, judge, writer, or leader both locally and nationally in philatelic circles. The awardee does not have to be a member of a Federation stamp club. Last year's recipients were Dale Forster and Anne Harris.

The **Federation Meritorious Service Award** may be presented to someone who has rendered outstanding service to the NWFSC over a period of time. There was no recipient last year. Past recipients included the Federation Webmaster David Harris and Treasurer Alex Hadden.

The third Federation award is the **Member Club Service Award**. The purpose of this award is to give Federation stamp clubs the opportunity to recognize someone in their club who has rendered outstanding service on the local level, but does not meet the criteria for the other two awards.

For example, this award has been given in the past to someone who served their club as treasurer for 30 years, or more. The 2014 recipients were Ula Mae Neligh and Ronald Sumner of the Oregon Stamp Society, Alan Meech and Keith Spencer of the Edmonton Stamp Club, and Richard Moyer of the Southern Oregon Philatelic Society.

Nominations for the Member Club Service Awards must be made by the member club. Nominations for the other awards may be made by a club or other interested individuals. Please keep in mind the criteria for the awards.

Nominations for the Northwest Distinguished Philatelist Award and Federation Meritorious Service Awards must be forwarded to Lawrence Clay no later than 1 April 2015. (See Masthead for his mailing address, phone number, or email address.) The deadline for the Member Club Service Award is 1 May 2015.

Please contact Lawrence Clay if you have any questions regarding these awards.

## PIPEX 2015

MAY 8, 9, 10, 2015

Red Lion Hotel on the River at Jantzen Beach  
909 N Hayden Island Drive, Portland 97217

SPECIAL SHOW ROOM RATE      FREE PARKING

FREE HOTEL AIRPORT SHUTTLE

### Convening Societies:

American Society of Polar Philatelists  
Military Postal History Society  
Universal Ship Cancellation Society  
Civil Censorship Study Group

40 Dealers    240 Frames of Exhibits  
USPS Sales Booth

Cachet Makers Bourse    Youth Activities  
Meetings & Seminars

Stamp Buddy: Beginning & Returning Adult Collectors  
Boy Scout Stamp Collecting Merit Badge Program

Harmer Schau Auctions Northwest Auction

More details on the show website:  
[www.pipexshow.org](http://www.pipexshow.org)

## SEAPEX 2015

September 11–13, 2015

\*\*\*\*\*

### Tukwila Community Center

12424 42nd Avenue South

Friday: 11:00 AM to 5:00 PM

Saturday: 10:00 AM to 5:00 PM

Sunday: 10:00 AM to 4:00 PM

<http://www.seapexshow.org>

25+ dealers, 160 frames of exhibits, cachetmakers bourse, free stamp evaluations, youth activities, Boy Scout merit badge, society chapter meetings, presentations. APS Stamp Buddy. USPS & UNPA booths. Free admission and free parking.



---

## Club Activities

The *Air Mail Northwest* newsletter of the **American Air Mail Society—Northwest Chapter** reports that the air-mail cover collection of their member Richard E. Nichol, will be part of the Harmer Schau auction at PIPEX. It also includes part three of an article on motorcycle courier service by John Johnson. Dues are \$8 per year.

*The Anchorage Philatelist* published by the **Anchorage Philatelic Society** reports on plans for its annual show (APEX) 6–8 March 2015. Dues are \$10 per year, \$15 for families, and \$2 for youth. See their website at [www.anchoragephilatelic.org](http://www.anchoragephilatelic.org).

The **Bellingham Stamp Club** publishes *The Bellingham Philatelist* newsletter (print only). Club meetings are on the third Wednesday each month at 7:00 PM at the Bellingham Public Library.

The **British Columbia Philatelic Society** publishes *BC Philatelic Newsletter*. Meetings are each Wednesday at 7:30 PM at West Burnaby United Church. The third Wednesday is auction night. Dues are \$20 per year for individuals, \$30 for families, and \$7.50 for students younger than 18. See their website: [www.bcphilatelic.org](http://www.bcphilatelic.org).

The **British North America Philatelic Society** publishes the *West Coast Express*. In our area are the Calgary, Edmonton, and Pacific Northwest chapters. Dues are \$10 per year for all. See their website: <http://bnaps.org/regional.php>.

The **Calgary Stamp Society** publishes *Calgary Philatelist*. They are planning their annual Spring Bourse for May 2–3. Dues are \$15 plus \$10 initiation fee. See details at their website: [www.calgaryphilatelicociety.com](http://www.calgaryphilatelicociety.com).

The **Edmonton Stamp Club** *Bulletin* for March contains an article on the stamps of Montenegro by Richard Barnes. Each monthly edition is full of interesting news and articles. The club will sponsor their **National Stamp Show** on March 28–29, 2015. Dues are \$25 per year for individuals, \$35 for families. See [www.edmontonstampclub.com](http://www.edmontonstampclub.com).

The **Evergreen Stamp Club** held a Christmas buffet dinner on December 17. They meet on the third Wednesday each month at 7:00 PM at Kent Commons. Dues are \$20 per year. See their website at [www.evergreenstampclub.org](http://www.evergreenstampclub.org).

The **Greater Eastside Stamp Society** publishes the *GESS Newsletter*. They held their annual GESSPEX show on January 31–February 1, 2015. They meet on the first and third Thursday each month at 7:00 PM at Unity Church of Bellvue. See more at <http://home.comcast.net/~g-e-s-s/>.

The **Greater Eugene Stamp Society** *Echoes* newsletter for January announces the new slate of club officers. They

meet on the second and fourth Wednesday each month at 7:00 PM at Saint Jude's Catholic Church. Dues are \$15 per year, \$5 for youth under 18. See their website at [www.greatereugenestampclub.org](http://www.greatereugenestampclub.org).

The **Inland Empire Philatelic Society** publishes *The Lilac Hinge*. The February edition announces plans for a tour of the USPS Distribution Center at the Spokane International Airport on March 26. See page 4 for information about the Arn Philatelic Symposium they are sponsoring on 11 April at Moses Lake. Dues are \$10 per year for individuals, \$15 for families, and \$5 for youth under 18. See their website at [www.ieps-stamps.com](http://www.ieps-stamps.com).

The **Northwest Philatelic Library** newsletter, *Book Reports*, for January-February contains an article by Greg Alexander describing how philatelic libraries are using technology to provide better access to their holdings. One area involves digitizing periodical publications to facilitate information searches. Dues are \$12 for those 18 and older, \$3 for under 18. See their website: <http://www.nwpl.org/>.

*The Album Page* January newsletter published by the **Oregon Stamp Society**, contains a report and photos from their Christmas party. The February edition contains articles on Valentines. Each edition has an article on the featured cover of the month. Meetings are on the second and fourth Tuesday each month at their club house. Dues are \$24 per year for regular members, \$16 for associate members who reside outside the local area. See their website at [www.oregonstampsociety.org](http://www.oregonstampsociety.org).

The **Pacific Northwest Postal History Society** publishes a quarterly journal titled *The Oregon Country* that covers the entire spectrum of Northwest postal history and includes special research projects. Dues are \$15 per year. See [www.pacificnorthwestpostalhistorysociety.org](http://www.pacificnorthwestpostalhistorysociety.org).

The **Peace Arch Stamp Club** does not publish a newsletter. They hold a live auction in conjunction with their meeting on the first Wednesday of the month (except July and August). Dues are \$10 per year. See <http://stampclub.ca/peacearch>.

The **Salem Stamp Society** newsletter, *Willamette Stamp & Tongs*, reports that 42 people attended their Christmas party. The club celebrated their 82nd anniversary in February. Their Spring STAMPEX is planned for March 22. They meet on the second Wednesday each month at 6:00 PM at Fire Station District #1. Dues are \$10 per year for individuals, \$15 for couples, and \$20 for families. See their website at [www.salemstampsociety.org](http://www.salemstampsociety.org).

— continued on page 10

---

# PIPEX Agreement

[*Ed note: This is a copy of the agreement between the Northwest Federation (NWFSC) and Portland Philatelic Exhibitions (PPE) that was finalized and signed on 23 December 2014, and that defines the responsibilities for producing PIPEX through the year 2019. There will be no PIPEX in 2016 because APS plans to hold its annual summer StampShow in Portland that year.*]

Agreement 2016-2019, dated 8 December 2014

1. PPE agrees to mount the PIPEX stamp show in 2017, 2018, and 2019 in Portland, Oregon on behalf of NWFSC. PIPEX is one of the American Philatelic Society (APS) annual World Series of Philately (WSP) events.
2. PPE will undertake all arrangements, publicity, promotion, and execution of the PIPEX shows. In any promotion materials, PPE will represent that it is producing the PIPEX show for and on behalf of the NWFSC.
3. There will be no financial risk or liability to NWFSC. In the unlikely event that a PIPEX show produced by PPE does not show an excess of income over expenditure, PPE will *not* seek any monetary relief from NWFSC to meet PPE obligations.
4. Each year in which PPE mounts a PIPEX show, no later than June 1, PPE will pay to NWFSC \$1000 to license the name PIPEX for exclusive use in all aspects of the philatelic show (advertising, promotion, show program, etc.). When PPE has built reserves of \$30,000, we will consider raising the license fee to \$1250.
5. PPE will continue to advertise PIPEX as a PPE show mounted for and on behalf of NWFSC.
6. PPE will make available meeting space at no charge for NWFSC to hold its AGM and NWFSC Board meetings at the PIPEX show.
7. PPE will provide NWFSC time during the PIPEX awards event for NWFSC to make presentations, including giving its customary awards.
8. In PIPEX show programs, PPE will continue to list NWFSC awardee data and provide NWFSC with free advertising space, up to one full program page, as well as a welcoming statement from the NWFSC chair.
9. NWFSC will grant to PPE the exclusive use of the PIPEX medal dies as long as PPE continues to mount the PIPEX show.
10. NWFSC will sponsor the Club Exhibit competition in the PIPEX shows, will provide the trophy for the winning  
— *continued on page 11*

---

## Club Activities (from page 9)

The **Sno-King Stamp Club** newsletter, *Sno-King Stamp Club Philatelic News*, reports that new officers were installed at their Christmas dinner on December 10. The club held a bourse on February 15 and prepared a special show cancel for the event. The club meets in Everett on the second Wednesday and in Edmonds on the third Friday each month. Dues are \$8 per year, \$5 for youth under 18. See their website at <http://sno-kingstampclub.freehostia.com>.

The **Southern Oregon Philatelic Society** newsletter, *The Philatelic Reminder*, has not been received. The club sponsors a show (SOPEX) scheduled for April 11–12, 2015.

The **Strait Stamp Society** publishes a bi-monthly newsletter, *Strait Stamp Talk*. At the next meeting on March 5, James Kloetzel, former Scott Catalogue editor, will give a talk on the “History of the Scott Catalogue.” They meet the first Thursday each month at 6:00 PM at the Sequim Library. The club has no dues, but accepts donations. See their website at [www.straitstamp.org](http://www.straitstamp.org).

The **Sidney Stamp Club** does not publish a newsletter. They meet on the second Saturday each month at 2:00 PM at the Sidney-North Saanich Library. The March meeting will include a swap day. Dues are \$5 per year.

The **Tri-Cities Stamp Club** newsletter, *The Triangle*, reports on the planned auction for February. However, this event is being postponed one month due to the auctioneer having been involved in an accident. Contact the club at P.O. Box 6228, Kennewick, WA 99336.

The **Vancouver Island Philatelic Society** publishes its newsletter, *The Guideline*, ten times per year. They held their annual general meeting on February 26. They plan a topical night at their March meeting. Dues are \$20 per year. See information at <http://www.vicstamps.com/vips.htm>.

The **Washington State Philatelic Society** does not publish a newsletter. They meet on the second and fourth Thursday of each month at 7:00 PM at the Gethsemane Lutheran Church in downtown Seattle.

[*Ed. note: If you would like to have news about your club activities and upcoming plans published in future columns, please email either me (jackcongrove@comcast.net) or Lisa Foster (fosteld@gmail.com) with the details.*]

---

**EDMONTON STAMP CLUB**  
**2015 SPRING NATIONAL STAMP SHOW**



**March 28-29, Saturday 10-5, Sunday 10-4**

**- NEW LOCATION -**

**Central Lion's Recreational Centre**

**113 St & 111 Ave, Edmonton, Alberta**

**Stamp Dealers from across Canada**

**Stamp Circuit Books, Door Prize Draw, Junior Stamp Table**

**National-level Competitive Stamp Exhibits (WSP)**

*liuszmoser@gmail.com*

**Free Admission, Free Stamp Evaluations**

**The theme of this year's show is**

**The 100th Anniversary of the 49th Battalion Loyal Edmonton Regiment**

**For information: *eddykstra@shaw.ca* [www.edmontonstampclub.com](http://www.edmontonstampclub.com)**

---

## **PIPEX Agreement** *(from page 10)*

club exhibit, and will present the award at the PIPEX award ceremony. The trophy, to be awarded on a rotating basis to each year's winner, will be the existing silver cup returned to NWFSC in 2013.

11. NWFSC will make its best efforts to recruit volunteers to assist in the PIPEX operation, in cooperation with the PIPEX Volunteer Coordinator. For youth volunteers, NWFSC will publish a notice and make its best efforts to certify that recruited volunteers have completed the on-line BSA Youth Protection Training valid for the period of the PIPEX show.

12. In the event that PPE does not hold a PIPEX show in Portland, Oregon, and a PIPEX show is held on behalf of NWFSC at some other location, whether in the US or Canada, PPE will provide to the organizing committee of that event whatever medals are needed at \$10.00 each, but without the presentation boxes that PPE uses. If the event medals are needed in Canada, PPE will not be held responsible or expected to pay any government taxes or other fees imposed on the export or import of the medals.

PPE shall not be expected to make any contribution toward the costs of a show not put on by PPE.

13. PPE shall make a good faith effort to include a Canadian judge on the jury panel. However, including a Canadian judge is not an absolute requirement.

14. PPE and NWFSC agree to review this agreement in 2018 before PIPEX 2019, in sufficient time to incorporate changes for PIPEX 2020.

15. This agreement takes effect only if an agreement for the production of PIPEX events is concluded between PPE and the Oregon Stamp Society (OSS).

[signed]

For NWFSC: Lawrence Clay, President (12/11/2014)

For PPE: Tony Wawrukiewicz, President (12/23/2014)

## UPCOMING STAMP SHOWS / BOURSES

SHOW DATES			Major shows in bold / PNW shows in italic	Revised: 12/20/2014	
FRI	SAT	SUN	SHOW NAME	LOCATION	TYPE
6-Mar	7-Mar	8-Mar	<i>APEX (Anchorage Philatelic Society)</i>	Anchorage, AK	Show
	14-Mar	15-Mar	<i>VicTopical (Vancouver Is. &amp; Greater Victoria Phil. Soc.)</i>	Victoria, BC	Show
	14-Mar	15-Mar	FRESPEX (Fresno Philatelic Society)	Clovis, CA	Show
	21-Mar		<i>Eugene Spring Stamp Fest (GESS)</i>	Eugene, OR	Bourse
		22-Mar	<i>Salem Spring Stamp Show (Salem Stamp Society)</i>	Salem, OR	Bourse
	<b>28-Mar</b>	<b>29-Mar</b>	<b>Edmonton Spring National Stamp Show</b>	<b>Edmonton, AB</b>	<b>Show</b>
	28-Mar	29-Mar	<i>Inland Empire Philatelic Society Apple Blossom</i>	Spokane, WA	Show
	11-Apr		<i>John D. Arn Stamp Symposium</i>	Moses Lake, WA	Education
	11-Apr	12-Apr	<i>SOPEX (Southern Oregon Philatelic Society)</i>	Central Point, OR	Show
		12-Apr	<i>Fenwick Stamp &amp; Coin Show</i>	Renton, WA	Bourse
	18-Apr	19-Apr	<i>Evergreen Stamp Club Spring Bourse</i>	Kent WA	Bourse
	18-Apr	19-Apr	<i>Bellingham Coin, Card, and Stamp Show</i>	Bellingham, WA	Bourse
Tues-Wed 22-23 Apr			Collecting Western US Postal History (APS course)	Burlingame, CA	Education
<b>24-Apr</b>	<b>25-Apr</b>	<b>26-Apr</b>	<b>WESTPEX (WSP)</b>	<b>Burlingame, CA</b>	<b>Show</b>
	2-May	3-May	<i>Calgary Spring Bourse</i>	Calgary, AB	Bourse
<b>8-May</b>	<b>9-May</b>	<b>10-May</b>	<b>PIPEX (WSP)</b>	<b>Portland, OR</b>	<b>Show</b>
<b>15-May</b>	<b>16-May</b>	<b>17-May</b>	<b>ROMPEX (Rocky Mtn. Phil. Exhibition) (WSP)</b>	<b>Denver, CO</b>	<b>Show</b>
<b>22-May</b>	<b>23-May</b>	<b>24-May</b>	<b>Royal-2015-Royale (Royal Phil. Society of Canada)</b>	<b>London, ON</b>	<b>Show</b>
		7-Jun	<i>Fenwick Stamp &amp; Coin Show</i>	Renton, WA	Bourse
		7-Jun	<i>Victoria Stamp and Postcard Fair</i>	Victoria, BC	Bourse
21-26 Jun			APS Summer Seminar 2015	Bellefonte, PA	Education
10-Jul	11-Jul	12-Jul	ASDA Northern California Postage Stamp Show	Millbrae, CA	Bourse
	18-Jul	19-Jul	<i>Evergreen Stamp Club Summer Exhibition</i>	Kent WA	Show
	25-Jul	26-Jul	Greater Reno Stamp & Cover Show	Reno, NV	Show
	27-Jul	28-Jul	<i>Greater Seattle Postcard &amp; Paper Show</i>	Kent, WA	Bourse
<b>31-Jul</b>	<b>1-Aug</b>	<b>2-Aug</b>	<b>ATA National Topical Stamp Show (WSP)</b>	<b>Clackamas, OR</b>	<b>Show</b>
	8-Aug		<i>Strait Stamp Show</i>	Sequim, WA	Show
		9-Aug	<i>Fenwick Stamp &amp; Coin Show</i>	Renton, WA	Bourse
<b>14-19 August</b>			<b>SINGAPORE 2015</b>	<b>Singapore</b>	<b>Intl Show</b>
		16-Aug	<i>Victoria Stamp and Postcard Fair</i>	Victoria, BC	Bourse
<b>21-Aug</b>	<b>22-Aug</b>	<b>23-Aug</b>	<b>APS StampShow (begins 20-Aug) (WSP)</b>	<b>Grand Rapids, MI</b>	<b>Show</b>
<b>11-Sep</b>	<b>12-Sep</b>	<b>13-Sep</b>	<b>SEAPEX Seattle Philatelic Exhibition (WSP)</b>	<b>Tukwila, WA</b>	<b>Show</b>
11-Sep	12-Sep	13-Sep	BNAPEX (BNAPS)	Niagara Falls, ON	Show
	26-Sep	27-Sep	<i>Inland Empire Philatelic Society Apple Harvest</i>	Spokane, WA	Show
	3-Oct	4-Oct	<i>VICPEX (Vancouver Is. &amp; Greater Victoria Phil. Soc.)</i>	Victoria, BC	Show
<b>2-Oct</b>	<b>3-Oct</b>	<b>4-Oct</b>	<b>SESCAL (Fed. Phil. Clubs of S. California) (WSP)</b>	<b>Los Angeles, CA</b>	<b>Show</b>
		11-Oct	<i>Fenwick Stamp &amp; Coin Show</i>	Renton, WA	Bourse
18-28 Oct			APS StampCruise (Panama Canal & W. Caribbean)	Fort Lauderdale, FL	Cruise
<b>13-Nov</b>	<b>14-Nov</b>	<b>15-Nov</b>	<b>Filatellic Fiesta 2015 (WSP)</b>	<b>San Jose, CA</b>	<b>Show</b>
		22-Nov	<i>Victoria Stamp and Postcard Fair</i>	Victoria, BC	Bourse
		13-Dec	<i>Fenwick Stamp &amp; Coin Show</i>	Renton, WA	Bourse
<b>2016:</b>					
28 May-4 Jun			<b>World Stamp Show NY 2016</b>	<b>New York, NY</b>	<b>Intl Show</b>
<b>5-Aug</b>	<b>6-Aug</b>	<b>7-Aug</b>	<b>APS StampShow (begins 4-Aug) (WSP)</b>	<b>Portland, OR</b>	<b>Show</b>
<b>Repetitive Events</b>			<i>Rose City Stamp Fair (2nd Saturday OSS clubhouse)</i>	Portland, OR	Bourse
			<i>Collector's Corner (4th Saturday OSS clubhouse)</i>	Portland, OR	Bourse