

# Federated Philatelist

Newsletter of the Northwest Federation of Stamp Clubs

No. 213, December 2015

## SEAPEX 2015

— by Jack R. Congrove

The Pacific Northwest now has two World Series of Philately (WSP) exhibitions. PIPEX held in Portland has been part of the WSP for many years. This year it was joined by the Seattle Philatelic Exhibition (SEAPEX).

A WSP exhibition is a U.S. national level show that has undergone an accreditation process by the American Philatelic Society and must follow strict standards to maintain its status. SEAPEX is proud to be the newest member.

These shows include a bourse (dealers with tables buying and selling), competitive exhibits, meetings and seminars, and usually host philatelic societies. They are generally the largest shows in the country.

SEAPEX held its exhibition on 11–13 September at the Tukwila Community Center just north of SeaTac Airport.

This year we had 26 dealers and set a new record with 183 frames of competitive philatelic exhibits with an additional 16 non-competitive frames.

The multi-frame Grand Award winner from each of the 31 WSP shows is invited to compete at the annual APS Stamp Show for the Champion of Champions Award, the highest national level exhibiting honor available.

The one-frame Grand Award winner also gets to compete at the APS AmeriStamp Expo for the Single Frame Champion of Champions Award.

The multi-frame Grand Award winner this year was Nicholas Lombardi for “The 1903 Two Cent Washington Shield Issue.” The one-frame Grand Award winner was Janet Klug for “Absinthe: The Devil in a Bottle.”

On Saturday, SEAPEX held a ceremony to honor the four people who had the vision and did the work to grow SEAPEX from a local/regional show into a national level exhibition.

These founding members are: James T. Hall, Charles E. (Chic) Bertolacci, and Ruth and Lyman Caswell. Each was presented with the SEAPEX Distinguished Service Award. These original awards are the first of what we plan to make an annual honor at each future show.



SEAPEX Board Secretary Lisa Foster (left) presents the SEAPEX Distinguished Service Award to Ruth Caswell, one of the four founders of the new WSP show

— continued on page 3

### Inside

SEAPEX 2015 – Jack R. Congrove .....	1
From the Editor’s Desk .....	2
Chairman’s Notes .....	3
Invalid Usage – Lisa D. Foster .....	4
News Items .....	5
Youth in Philately – Lisa D. Foster .....	6
Club Presentations and Programs – Lisa D. Foster .....	6
Dryad, Washington – Jack R. Congrove .....	8
The Crudity of Nudity – Lisa D. Foster .....	10
Club Activities .....	12
Philatelic New Year’s – Lisa D. Foster .....	14
World Stamp Show .....	14
Philatelic Puzzle .....	15
Stamp Show Calendar .....	16

## Editor

JACK R. CONGROVE  
P.O. Box 33092, Fort Lewis, WA 98433  
253-564-0969  
jackcongrove@comcast.net

## Associate Editor

LISA D. FOSTER  
P.O. Box 20760  
Seattle, WA 98102  
fosteld@gmail.com

## Northwest Federation of Stamp Clubs

<http://www.nwfedstamps.org>

## Chairman of Board of Directors

LAWRENCE CLAY  
P.O. Box 6228  
Kennewick, WA 99336-0228  
Phone: 509-735-3731  
lclay3731@charter.net

## Board of Directors

ERIC A. RANGER  
New Westminster, British Columbia

DR. KEITH R. SPENCER  
Edmonton, Alberta

ERIC HUMMEL  
Phoenix, Oregon

## Executive Secretary

Vacant

## Treasurer

ALEX HADDEN  
#19 – 7651 Francis Road  
Richmond, B.C. V6Y1A3  
Phone: 604-272-2614  
alex-hadden@shaw.ca

## Judging Chairman

DICKSON PRESTON  
Seattle, Washington

## History Chairman

LEONARD LUKENS  
Phoenix, Oregon  
lenlukens2@gmail.com

## Webmaster

DAVID HARRIS  
Medical Lake, Washington  
sqpiano@gmail.com



This is the final issue of the newsletter for 2015, a sign that the end of year holidays are near. I wish all of our readers a safe and happy holiday and a healthy and prosperous New Year.

Speaking of the new year, on page 14 Associate Editor, Lisa Foster, provides some suggestions for philatelic new year resolutions.

This is the time of year for indoor activities and what option could be better than spending time working on our stamp collections and exhibits.

In the Club Activities section, you will find a number of holiday parties listed—a good time to be a member of multiple clubs.

The coming year offers us some wonderful opportunities to experience some terrific philatelic events. Once every ten years, the United States hosts a worldwide international philatelic exhibition and next year is it.

The World Stamp Show NY 2016 will be held in New York City between 28 May and 4 June 2016. See page 14 for more information about this premier event and try to attend if you are able.

Next year The Great Northwest will be fortunate to play host to the largest national level show in the United States when the American Philatelic Society holds their annual Stamp Show in Portland, Oregon. This four-day show will take place 4–7 August 2016, at the Portland Convention Center.

Due to the WSS and the APS Stamp Show, the annual PIPEX show will not be held next year. However, there will still be one national level World Series of Philately show here in The Great Northwest when SEAPEX hosts their show in Tukwila, Washington, 9–11 September.

One thing you may note in this issue is that most of the articles have come from your editors. I enjoy writing, so I am not complaining on that account. However, as I stated when I took over as the editor, this is not the “Congrove Newsletter.”

This publication is supposed to include articles and news items from **all** of our Federation clubs and members.

I am continually looking for news and articles to publish. Please look at your collection and send me a couple paragraphs describing an item you find interesting. Club officers, send me news about your club's activities and accomplishments. I will publish this information in upcoming editions. **Input for the next edition is due to me not later than 15 March 2016.**

— Jack R. Congrove, Editor

Answers to Philatelic Puzzle: 1-G, 2-M, 3-P, 4-L, 5-J, 6-N, 7-E, 8-H, 9-A, 10-C, 11-F, 12-I, 13-D, 14-B, 15-K, 16-O

## SEAPEX 2015 (from page 1)

On Thursday before the show, we organized a tour of the Boeing Museum of Flight. Eight people participated and I want to again thank Steve and Caroline Brandt, who are museum members, for their contribution to our tour.

I also want to thank Steve Ellis, a fellow collector and docent at the museum, for the guided tour and for arranging with the archivist to view some of the unique and wonderful historic flight covers and related philatelic material in the museum's collection.



Steve Ellis of the Boeing Museum of Flight describes some of the significant philatelic material in the museum's collection

On Friday, Tim Moore from the Bridge and Structures office at the Washington State Department of Transportation gave a very interesting presentation on the history of the Tacoma Narrows Bridge whose 75th anniversary was the theme of our show.



Tim Moore describing the world's longest suspension bridges

On Saturday, the show hosted a seminar for ten Boy Scouts to fulfill the requirements for achieving a stamp collecting merit badge.

— continued on page 7

## Chairman's Notes

The holiday season is fast approaching whether we like it or not! So I want to take this opportunity to wish everyone a wonderful holiday season and a happy new year. May you have success in finding that elusive item to help you in building or expanding your philatelic collections.

I still have managed to keep busy this fall while attending SEAPEX in Seattle, the Spokane fall show, and my own Tri-Cities stamp show. I helped Steve Andreason and Cecil Stellyes with the Stamp Collecting Merit Badge for Boy Scouts at SEAPEX and held a class here in the Tri-cities.

Encouraging Scouts with the Stamp Collecting Merit badge is my way of trying to encourage youth in stamp collecting. Maybe some day some of these kids will be serious stamp collectors.

As I am sure almost all of you know, there will not be a PIPEX stamp show in Portland in 2016. The New York International Stamp Exhibition from May 28–June 4 and the American Philatelic Society (APS) Stamp Show 2016 in Portland on August 4–7 would make it every difficult to hold a successful PIPEX show next May.

Therefore, the Northwest Federation of Stamp Clubs (NWFSC) asked for and received a bye from the APS for 2016. The next PIPEX World Series of Philately show in Portland will be Mother's Day weekend in 2017.

Normally, the NWFSC Annual General Meeting is held in conjunction with PIPEX. Because there will not be a PIPEX in 2016, the NWFSC has submitted a request to the APS for a room on August 6 at Stamp Show 2016 to hold the NWFSC AGM. We hope to see many of you at that meeting. Again, best wishes to everyone.

— Lawrence Clay, Chairman

### UPCOMING SHOWS

#### GESSEX

January 30–31

Redmond VFW, Redmond, WA

#### APEX

March 4–6

Senior Activities Center, Anchorage, AK

#### Edmonton Spring Show

April 2–3

Central Lions Centre, Edmonton, AB

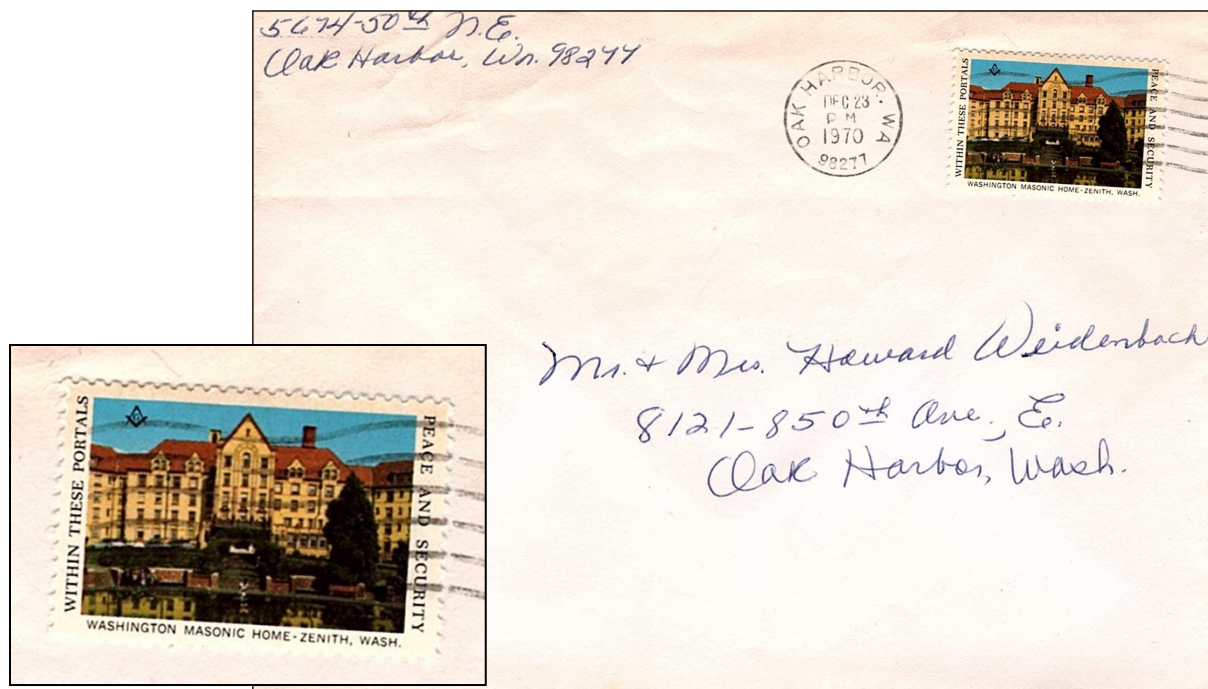
#### SOPEX

April 9–10

Jackson Co. Fairgrounds, Central Point, OR



# Invalid Usage



— by Lisa D. Foster

At first glance this cover may not seem all that interesting. But taking a closer look, one can see that it was delivered in 1970, to and from addresses in Oak Harbor, Washington without valid postage.

The Cinderella stamp used on the letter is from a sheet of 50 poster stamps of the Washington Masonic Home.

The 130,000 square foot home opened in Zenith, Washington in June 1927. Zenith is a one and a quarter square mile neighborhood in the city of Des Moines, Washington.

The Masonic Home of Washington was built originally in Puyallup in 1911. The Zenith site was chosen in 1924 because of its picturesque view and proximity to Seattle.

The majestic castle-like design made the building a landmark in Zenith, and visible even from Tacoma, 15 miles away.

The home and its 27-acre campus was a retirement community for members of Washington's Masonic Society from inception until it was put up for sale in 2013. The building was placed on the Washington Trust for Historic Preservation 2015 endangered properties list. It is currently unfit to live in and in need of renovation.



Masonic Home from the air in 1980s

Keep your eye open for more of these types of invalid usage covers. The USPS is quite careless with these items. I have seen examples that use cutout images from magazines and other non-postal material.



---

## Calgary Stamp Shows

[Ed. note: Although the Calgary Philatelic Society is not a member of the Northwest Federation, we do want to publicize information about their show activities so our other Federation members can take advantage of these events.]

The Calgary Philatelic Society will host a **bourse** on 30 April and 1 May 2016, at the Kerby Centre located at 1133 7th Avenue SW, Calgary, Alberta.

The hours are: Saturday 10AM to 6PM and Sunday 10AM to 4PM. The event will feature dealers, junior and club tables, and a large auction on Sunday at 1PM.

The Society will hold their annual show, **CALTAPEX 2016**, on 15–16 October 2016, also at the Kerby Centre.

Show hours are: Saturday 10AM to 6PM and Sunday 10AM to 4PM.

This event will feature exhibits, philatelic judging, a banquet, dealers, junior and club tables, and a large auction on Sunday at 1PM. Food concession and free parking is available at each event.

For more info, see [www.calgaryphilatelicsociety.com](http://www.calgaryphilatelicsociety.com), or call Walter Herdzyk, 403-238-7845

---

## Federation on Facebook

The Northwest Federation has a Facebook page edited by Bill Ailes (*Northwest Federation of Stamp Clubs*).

For those of you who have been on extended sabbatical in Timbuktu, Facebook is an online social networking service that enables users to exchange messages, share photos and videos, and receive notifications of interesting events and activities.

The Federation Facebook page includes posts about interesting philatelic events taking place in The Great Northwest and elsewhere.

Pay it a visit and see what is happening in the local philatelic world.

---

## Oregon Coastal Clubs

Greater Eugene Stamp Society member Harry Shepherd, the President of the Coos Bay Stamp Club has established a website for the Oregon Coastal Clubs (Coos Bay and Reedsport). He has added links to some good auction and retail sites. The Oregon Coast Stamp Clubs website can be reached at: [www.Oregoncoaststampclubs.com](http://www.Oregoncoaststampclubs.com).

---

## Club Activities (from page 13)



**USS Puget Sound Chapter 74** of the Universal Ship Cancellation Society 2016 Winter Meeting will be on Saturday, 5 March 2016, at 1300 in the Coast Guard Museum/

NW (Pier 36, 1519 Alaskan Way), Seattle. If you would like to attend this Chapter meeting, please call CAPT Gene Davis, USCG (ret.) (206-217-6993, M-W-F 0900-1500) or Robert Clark (425-396-7867 after 20 February 2016) so you can be put on the official list at the Guard Gate. Please bring picture ID as well as automobile registration and insurance for driving on the US Coast Guard (Dept. of Homeland Security) Base.



The **Vancouver Island Philatelic Society** publishes a monthly newsletter, *The Guideline*. They held their VicPex show on 3-4 October. They plan their Christmas party for 17 December. The club meets at 7:30 PM on the fourth Thursday each month at St. Aidan's Church. Dues are \$20 per year. See website at

[www.vicstamps.com/vips.htm](http://www.vicstamps.com/vips.htm).



The **Washington State Philatelic Society** does not publish a newsletter. They meet on the second and fourth Thursday of each month at 7:00 PM at the Gethsemane Lutheran Church in Seattle.



The **Northwest Federation of Stamp Clubs** will hold its annual meeting at the APS Stamp Show in Portland, Oregon on 6 August 2016.

[Ed. note: If you would like to have news about your club activities and upcoming plans published in future columns, please email either me ([jackcongrove@comcast.net](mailto:jackcongrove@comcast.net)) or Lisa Foster ([fosteld@gmail.com](mailto:fosteld@gmail.com)) with the details.]

---

# Youth in Philately

— by Lisa D. Foster, Associate Editor

Wondering what gift to get the youth in your life? How about giving a book that not only promotes reading, but also stamps? There are many available including, *Owney: The Mail-Pouch Pooch*, by Mona Kerby, illustrated by Lynne Barasch (\$14).

It is the 2009 Best Children's Book of the Year, a true story of a dog whose faithful service earned him a trip around the world. Or similarly, *A Lucky Dog: Owney, U.S. Rail Mail Mascot*, by Dirk Wales, illustrated by Diane Kenna (\$10).

Another favorite is *Millie Waits for the Mail*, by Alexander Steffensmeier, about a cow who loves scaring the mail carrier.

Other titles include, *The Post Office Book: Mail and How it Moves*, by Gail Gibbons; *Postal Workers (Kids Can Read)*, by Paulette Bourgeois; and *Mailing May*, by Michael O. Tunnell.

I have many happy memories of family Game Night where we played board games and ate pizza. Pass the gift of time together and philately with the monopoly game "POST OFFICE-OPOLY."

In the board game "Thurn and Taxis," players construct postal routes across Bavaria to deliver mail. For the younger kids "Stampin'," is a lively game of stamp acquisition sold by the U.S. Postal Service. (All are available on Amazon.com).

Another gift I love to receive includes puzzles of stamps. They can be found on line, at local stores, and from the USPS.

And of course, each youth in your life, has to receive a Stamp Collecting starter kit. There are kits already made for purchase, or you can create a starter kit of your own.

If you live far away you can add to their collection throughout the year by writing letters to them. All kids love to receive mail addressed to them. If given stamped, self-addressed envelopes, they may even write back.

---

## Club Presentations and Programs

— by Lisa D. Foster

At our local clubs we all try to find activities to keep the meetings dynamic, interesting and enjoyable to attract members and promote attendance. Finding members and guest speakers to put on interesting presentations is an on-going challenge.

One idea some clubs have used is to hold an evening of "Show and Tell" where each member brings in a philatelic item to share and provides a brief description and explanation of its importance.

With so many items in our stamp rooms, it may be easier to find something to bring if provided a topic or theme. A few ideas to consider for a successful Show and Tell include, Postal History, Fancy Cancells, Interesting Usage, Places I've Visited, Necessary/unique Stamp Supplies, or What's in your Philatelic Library.

There are many sources of material outside of the club membership. The American Philatelic Society (APS) offers more than 140 programs available for rent including general-interest or introductory programs, as well as specialized programs on U.S. and foreign subjects.

All slide programs are available with a cassette tape recording and script, with a running time varying from 20 minutes to one hour. A few programs for rent are offered only in VHS cassette or DVD formats. A list of current slide programs with instructions is available on line at <http://stamps.org/Slide-Programs>.

The Collectors Club of New York posts videos of presentations (with the accompanying PowerPoint file) that you can access and show at your club meeting.

Did you miss the presentation "1920 Siam 'Scouts Fund' Overprints" at SEAPEX 2015 by Dr. Frederick Lawrence? It was given at the CC of NY on September 16, and it (and many other presentations) are available at the website; [http://www.collectorsclub.org/meeting\\_schedules\\_and\\_events.shtml](http://www.collectorsclub.org/meeting_schedules_and_events.shtml)

The West Toronto Stamp Club has also posted presentations given at their club meetings for other clubs to use for free at [www.westtorontostampclub.org/presentations.htm](http://www.westtorontostampclub.org/presentations.htm).

Because we are a Federation of NW Stamp Clubs, I suggest we keep a listing of members willing to give a presentation to a club other than their own.

If you have prepared a presentation and would be willing to be a guest presenter, please send me your name, the topic of the presentation with a brief description, your location, and number of miles you are willing to travel. I have started the list:

"Stamp Collecting: A to Z," by Lisa Foster. (Power Point) A fun test of attendees' philatelic knowledge and an opportunity for reminiscence and conversation. Kent, Washington, 60 miles.

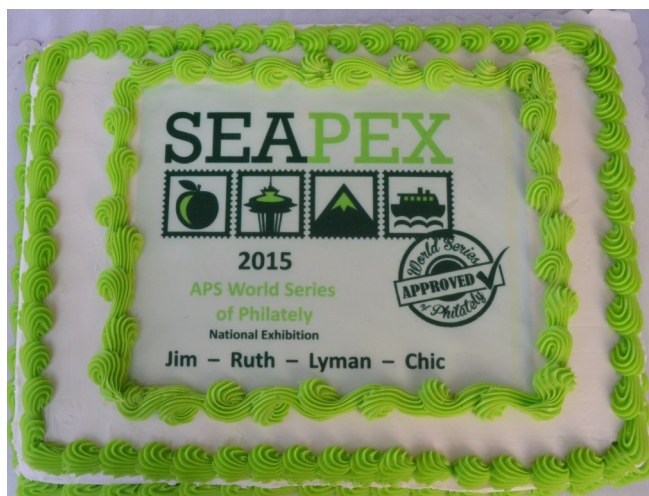
— continued on page 7



---

## SEAPEX 2015 (from page 3)

Other activities included presentations on the History of the Scott Catalogue and the 1920 Siam “Scout Fund” Overprints.



Chapter meetings were held by several societies including Women Exhibitors, German Philatelic Group, American Helvetia Philatelic Society, and the Universal Ship Cancellation Society.

On Sunday, the APS President, Stephen Reinhard, conducted an APS Town Hall meeting where he discussed the recent APS staff changes and introduced Megan Orient, the new Manager of Shows and Exhibitions.



Megan Orient, APS Manager of Shows and Exhibitions

Mr. Reinhard also spoke about the future APS plans and APS participation in the NY 2016 international show. He told the audience that final construction has begun on the Library, which should be complete by mid-2016.

Michael Bloom also spoke about the implementation of the APS Stamp Buddy program, which was offered at SEAPEX this year, and the plans for a 5,000 square feet youth booth at World Stamp Show NY 2016.



David Levy  
Winner of the  
Build-a-Bridge  
Contest for youth

Next year SEAPEX will be held at the same location on 9 –11 September. In addition to multiple dealers and top quality exhibits, we will be hosting an auction operated by Harmer-Schau Auctions.

---

## Presentations (from page 6)

“Invalid Postage,” by Lisa Foster. (PowerPoint) Reviewing covers that went through the mail system, without valid postage that were not caught by the postal authorities. Kent Washington, 60 miles.

“Exhibiting,” by Lisa Foster (PowerPoint) An introduction to exhibiting; from collector to exhibitor. Kent Washington, 60 miles.

If you have never made a presentation, consider reading the article, “Creating Successful Philatelic PowerPoint Presentations,” by Steve Swain in the September/October 2015 issue of The Federation of New York Philatelic Societies on-line newsletter, *Stamp Insider*.

The author briefly describes a four-step process for creating an effective philatelic PowerPoint for your club presentation. They also post Virtual Programs on their website: [www.stampinsider.org](http://www.stampinsider.org).

December is a good time to start planning programs for the upcoming year. If your club does not have a program manager, consider passing around a 2016 calendar and have members sign up to present either their own presentation or coordinate one of the many available from the resources discussed above.



# Dryad, Washington



Panoramic view of Dryad, Washington, ca. 1906



— by Jack R Congrove

I purchased the postcard shown above from another collector at a local show.

The divided back card numbered 176 is titled, “Old Mill at Napa, California,” and was published by The Edward H. Mitchell Company in San Francisco. It was printed using four-color lithography probably about 1907–08.

This card shows the Old Bale Grist Mill near St. Helena, California. Built in 1846, using Douglas fir and coast redwood timber, it operated until the late 1800s.

This picture shows the 36-foot wheel overgrown and in disrepair, but the mill has been restored and currently is the centerpiece of a state park. It is one of only two remaining water-driven wheels west of the Mississippi.

However interesting the picture, it is not the reason I bought the card. Somehow this card made its way to the state of Washington and on 5 January 1909, it was posted at Dryad, Washington, for delivery to Spokane.

A green Franklin one cent stamp (Sc#300) issued in 1903, paid the postcard rate.

Dryad is located two miles east of Doty on the Chehalis River in Lewis County. It was originally named Salal, but changed names when the railroad was built in 1892. Its current name comes from Greek mythology. A dryad is a nymph inhabiting a forest or tree.

The town was founded by the Northern Pacific Railway around 1890, and its main industry was lumber and timber products. A sawmill owned by the Luedinghaus brothers and several shingle factories provided jobs for “every man who wanted to work.” Until 1930, when the mill closed, its population was about 500.

The Dryad post office opened in 1892, and operated until 26 June 1957. The first postmaster was George Shearer, a local businessman. The postmaster around the time this card was mailed was Charles F. Pole.

Although its population was small, in addition to its lumber businesses, Dryad boasted a general store, two sa-



## Dryad, Washington (from page 8)



Northern Pacific Railway station at Dryad, ca. 1915  
(University of Washington Digital Collection)

loons, and a hotel. It also had an opera house with Postmaster Pole as proprietor.

In 1909, the saw mill using steam power, produced up to 75,000 board feet of lumber per day. The mill also had a complete dry kiln and a planing mill for drying and finishing higher grades of lumber.

Dryad at this time had a Baptist church and a four-room school employing four teachers.

The writer of our card implores her correspondent to write. She apparently was eager to hear from her cousin following the Christmas holiday. Perhaps she was expecting a holiday card that did not arrive.

The population of Spokane in 1909 was around 100,000 due to its importance as a commercial center and site of four transcontinental railroad lines. The address on the card, South 235th Stone Street, was about one and a half miles east of the city center.

Mrs. Mary E. (St. Clair) Lee, the addressee, was a young woman of 21 years. Her husband, Mackie O. Lee, who was seven years older, worked as a passenger brakeman for the Northern Pacific Railway.

Between October 1905 and March 1906, Mackie Lee had worked as a fireman in a lumber mill in Winlock, Washington, about 26 miles from Dryad and mentioned in the postcard. Perhaps that is where he and Mary had met.

The sender signed the card "Rollie," or perhaps "Zollie." A check of the 1910 census for Dryad does not reveal any good candidate for a person with these names.

It is interesting to speculate how a postcard showing a landmark in central California ended up in the hands of a person in Dryad more than 700 miles away from where it was published perhaps only one year previously.

Many people do not realize that picture postcard collecting was a very popular pursuit at the turn of the last century. In 1903, more than 600 million postcards were mailed in the US. Even this quantity was modest compared with Germany, which was well over one billion.

Perhaps our sender chose a card from her own collection that she had purchased on the trip to Portland mentioned in the message.

Postal cards (imprinted by postal authorities) have always been regarded as a branch of philately.

Picture post card collecting has been treated with low esteem by some traditional stamp collectors. Now postcard exhibiting is an accepted exhibiting class and many, including myself, find these exhibits appealing for the same reasons that original collectors were attracted to them.

They are terrific reminders of historical events and places. They give us a glimpse of society and living conditions in the past.

Deltiology is the term used to describe the collection, study, and preservation of picture postcards. I would be pleased to receive an article from our readers that delves into the history and evolution of the postcard.

---

"Lewis County to Willapa Bay, by Rail," *The Sou'wester*, vol. XLII, nos. 2 & 3, Pacific County Historical Society and Museum, 2006.

*The Coast*, vol. XVII, no. 5, May 1909.

Harrison, Barbara A. "The Craze for Collecting Postcards," *Women Exhibitors*, August 2007.

**Edmonton Stamp Club**  
**2016 SPRING STAMP SHOW**  
April 2-3, Sat 10-5, Sun 10-4

**NEW LOCATION**  
Central Lion's Centre  
113 Street & 111 Avenue

Stamps for sale, Junior Table, Exhibits,  
WSP: Grand Award competes in APS Champions  
Wine & Cheese Reception, BNAPS Breakfast, more

**FREE ADMISSION**  
[www.EdmontonStampClub.com](http://www.EdmontonStampClub.com)

# The Crudity of Nudity on Stamps

— by Lisa D. Foster

Many countries have commemorated fine artists and their work on postage stamps. The United States Postal Service (USPS) has produced stamps on modern art, botanical art, portraits of the artists themselves, and so forth, but very little fine art as seen on European stamps.

As I began to question dealers, collectors, and exhibitors, I was told this was because many of the paintings by famous masters are of nudes that the USPS felt to be indecent, vulgar, or too crude to be on a postage stamp.

The first time in the world a postage stamp represented a naked woman was in 1930 when the Spanish Postal Authority produced three stamps depicting “La Maja Desnuda” in commemoration of the painter Francisco Goya.



Goya Commemorative  
Spain, 1930, Sc#397

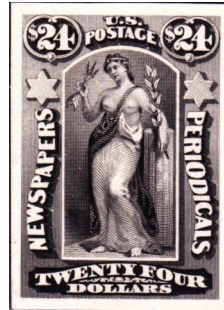
The United States government reacted by barring and returning all mail bearing the Goya “Nude Maja” stamps. Interestingly today Section 1463 of Title 18, United States Code, prohibits mailing of “indecent, lewd, lascivious, or obscene” matter on wrappers or envelopes.

Eventually the US did allow mail with the stamp to enter the country and allegedly issued and sold, for a few days, a stamp with the same image.

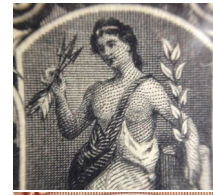
I was unable to find any reference to this alleged stamp, but did find Sc#738X a humorous revision of U.S. Sc#738 “Portrait of His Mother” by American born artist James Abbott McNeill Whistler issued in 1934 for Mother’s Day using a vignette from the Spanish stamp of similar color.



Actually, the first US stamps showing topless women were issued in 1875. These were newspaper stamps, used to pay the cost of mailing newspapers. They depicted women in classical poses. Three of them are classified as nudes and were re-issued (same or similar) in later years: Peace (Sc#PR29), Hebe (Sc#PR31), and Indian Maiden (Sc#PR32).



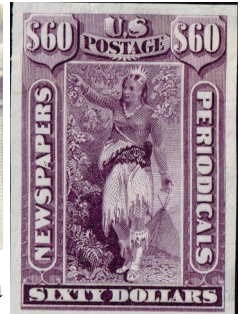
“Peace”  
US, Sc#PR29TC



“Hebe”  
US, Sc#PR31P3

Upon further research I found other US stamps showing nudes, although they are more obscure.

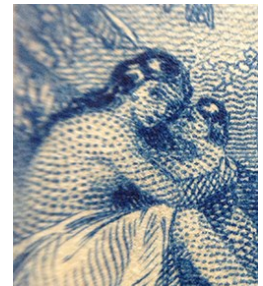
In 1893, the US issued “Columbus in Sight of Land” (Sc#230) that shows a topless woman holding on child on the left side of the stamp.



“Indian Maiden”  
US, Sc#PR32P3



Columbus in Sight of Land  
US, 1893, Sc#230



In 1926, the US issued the John Ericsson Memorial stamp (Sc#628) that pictures a statue of nude female.

In 1940, a stamp commemorating the 50th anniversary of the Pan American Union

pictures the semi-clothed Three Graces from Botticelli’s “Allegory of Spring” (Sc#895).

Not all of the stamps portray nude women. In 1949, the Universal Postal Union (UPU) Post Office Building stamp (Sc#C42) was issued with the UPU emblem that depicted five partially clothed men and women dancing around the earth.



## The Crudity of Nudity (from page 10)



A 1953 stamp commemorating the 75th anniversary of the American Bar Association (Sc#1022) depicted the detail of a frieze from the Supreme Court Room.

Stamps issued for the 1932 Olympic Games (Sc#719) and Physical Fitness (Sc#1262) in 1965 both portray statues of a nude male.



One could also consider more abstract nudes such as the Kii Statue on the City of Refuge stamp (Sc#C84) issued in



1972, or the drawing depicted on the Breast Cancer stamp (Sc#B1) released in 1998.

If you feel like conducting your own research, the website "Nudes on Paint-

ings" ([www.artonstamps.org/nudes.htm](http://www.artonstamps.org/nudes.htm)) is quite entertaining. If you hover your mouse over the stamp, a humorous caption, or alternate picture appears.

On YouTube, you can watch an entertaining cabaret of Nudes on Stamps from around the world. ([www.youtube.com/watch?v=P9J8ed6HOpM](http://www.youtube.com/watch?v=P9J8ed6HOpM)).

Seriously, if you are interested in pursuing collecting nudes on stamps, there is an online index/checklist of Nudes on Stamps with pictures (<http://www.snapdragon.com/PNIndex.html>), and the American Topical Association provides a checklist of Nudes (2970 entries). In addition there is an ATA Study Unit, Fine and Performing Arts Philatelists with a quarterly journal.

## Seattle Philatelic Exhibition SEAPEX 2016

an APS-accredited  
**NATIONAL Stamp Exhibition**

**100th Anniversary**



**Boeing Aircraft  
Seattle**

**FREE PARKING  
FREE ADMISSION**

**25+ Stamp Dealers  
160+ Frames of Exhibits  
USPS Postal Booth  
Scout Merit Badge Seminar  
Society Meetings & Seminars  
Show Cachet and Cancellation  
What's in Your Attic Evaluations  
Free Stamps for Youth/Educators**

**September 9–11, 2016**

Fri. 10AM–6PM  
Sat. 10AM–5PM  
Sun. 10AM–4PM

**Tukwila Community Center  
12424 42nd Avenue South  
Tukwila, Washington**

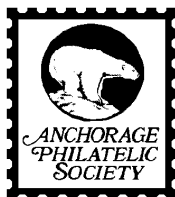
<http://www.seapexshow.org>  
Facebook: Seapex: Seattle Philatelic Exhibition



## Club Activities



The **American Air Mail Society—Northwest Chapter** has not published a recent edition of the *Air Mail Northwest* newsletter. The chapter has no website. Dues are \$8 per year.



The *Anchorage Philatelist* published by the **Anchorage Philatelic Society** reports that despite some initial confusion their sale of covers at the State Fair was a success. The club plans participation in the ASAC Christmas Bazaar and will hold their Christmas party on 9 December. They are currently making plans for APEX 2016 on 4–6 March. Dues are \$10 per year, \$15 for families, and \$2 for youth. [www.anchoragephilatelic.org](http://www.anchoragephilatelic.org).

The **Bellingham Stamp Club** has not produced a recent newsletter. They have joined with another club in Lynden and are meeting with them for an interim period.



The **British Columbia Philatelic Society** apparently has not been publishing their *BC Philatelic Newsletter*. Meetings are each Wednesday at 7:30 PM at West Burnaby United Church. The third Wednesday is auction night. Dues are \$20 per year for individuals, \$30 for families, and \$7.50 for students younger than 18. Website: [www.bcphilatelic.org](http://www.bcphilatelic.org).

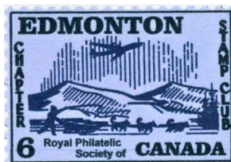


The **British North America Philatelic Society** (Pacific Northwest Regional Group) publishes the *West Coast Express*. In our area are the Calgary, Edmonton, and Pacific Northwest chapters. BNAPS plans to have a booth at NY 2016. Dues are \$10 per year for all. See their website: <http://bnaps.org/regional.php>.



The **Collectors Club of Seattle** does not publish a newsletter. They hold an auction on the first Friday of each month. They have an extensive philatelic library. The club is open on the first Friday at 6:30 PM and on Tuesdays from 11:30 AM to 1:00 PM at the Maple Leaf Evangelical Church. Dues are \$20.

The **Eagle Stamp and Postcard Club** does not publish a newsletter. They are planning their Christmas party on 11 December. They hold auctions about four times per year. They meet on the first Tuesday each month at 7:00 PM at the Eagle Methodist Church. See their website: <http://www.eaglestampandpostcardclub.com/>.



The **Edmonton Stamp Club** *Bulletin* for October described some thefts at one of their auctions and measures they are taking to prevent such occurrences in the future. Each monthly edition is full of interesting news and articles. They are already planning for their spring show on 2–3 April. They meet on second and fourth Mondays at 6:30 PM at St. Joseph High School. Dues are \$30 per year for individuals, \$40 for families. There is a one-time \$5 fee for a name tag. See [www.edmontonstampclub.com](http://www.edmontonstampclub.com).

The **Evergreen Stamp Club** annual Christmas dinner will be on 16 December. They held a club auction on 18 November. The next club show is scheduled for 16–17 April. They meet on the third Wednesday each month at 7:00 PM at Kent Commons. Dues are \$20 per year.

The **Gastineau Philatelic Society** does not publish a newsletter. They meet on the third Tuesday each month at 7:00 PM at various locations.

The **Greater Eastside Stamp Society** publishes the *GESS Newsletter*. They are planning their annual holiday party. They will host their annual GESSPEX stamp show on 30–31 January at the Redmond VFW. They meet on the first and third Thursday each month at 7:00 PM at Unity Church of Bellevue.



The **Greater Eugene Stamp Society** publishes *Echoes* bimonthly newsletter. The November issue had an article on a visit to the Gettysburg Battlefield. The club plans to hold their Christmas party on 9 December. They meet on the second and fourth Wednesday each month at 7:00 PM at Saint Jude's Catholic Church. Dues are \$15 per year, \$5 for youth under 18.

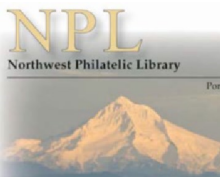


The **Inland Empire Philatelic Society** publishes *The Lilac Hinge*. They held their Apple Harvest bourse on 26–27 September. The club is planning a donation auction on 24 November for a local nursing home. Their annual Christmas dinner will be 8 December. Starting in January 2016, former *Federated Philatelist* editor, Larry Mann, will become editor of their newsletter. They meet on the second and fourth Tuesday each month at 7:00 PM at Riverview Terrace Retirement Center. Dues are \$10 per year for individuals, \$15 for families, and \$5 for youth under 18. See their website at [www.ieps-stamps.com](http://www.ieps-stamps.com).



## Club Activities (from page 12)

The **Linn County Philatelic Society** does not publish a newsletter. They held their LINNCOPEX stamp show on 31 October in Albany. They meet on the second Thursday each month at 7:00 PM at The Villas. See their website at [www.albanystampclub.com](http://www.albanystampclub.com).



The **Northwest Philatelic Library** publishes a quarterly newsletter, *Book Reports*. The Summer edition announced the former President, Charles Neyhart won a second Helbock Prize for the best postal history article in *La Posta*.

Several new publications have been added to the library collection. Dues are \$12 for those 18 and older, \$3 for under 18. See their website: <http://www.nwpl.org/>.

The **Okanagan Mainline Philatelic Association** does not publish a newsletter. They meet five times a year. In January, March, May, September, and November.

The **Olympia Philatelic Society** does not publish a newsletter. They meet at 7:30 PM on the second and fourth Monday each month at the Olympics West Retirement Inn. Dues are \$10 per year. See their website at <http://olympiaphilatelicssociety.org/>.

The **Olympic Philatelic Society** does not publish a newsletter. They meet at 7:00 PM on the second and fourth Tuesday each month at the Silverdale Community Center.



The **Oregon Stamp Society** publishes a monthly newsletter, *The Album Page*. Each edition has an article on the featured cover of the month. They report on member participation at NTSS and SEAPEX. The club is hosting a con-

signment sale at their clubhouse on 28 November. Their holiday potluck will be on 8 December. Meetings are on the second and fourth Tuesday each month at their club house. Dues are \$24 per year for regular members, \$16 for associate members who reside outside the area. Website: [www.oregonstampsociety.org](http://www.oregonstampsociety.org).

The winter issue of the **Pacific Northwest Postal History Society** quarterly journal, *The Oregon Country*, contains articles about the names of Oregon's newest post offices and postal experiences of pioneers. The society website is out of date and is being revised. Dues are \$20 per year.

The **Peace Arch Stamp Club** does not publish a newsletter. They meet at 5:30 PM on the first Wednesday of the month (except July and August). Dues are \$10 per year. See <http://stampclub.ca/peacearch>.



The **Salem Stamp Society** publishes a monthly newsletter, *Willamette Stamp & Tongs*. The club held their Stampex bourse on 20 September and a club auction and election of officers on 11 November. Their Christmas party will be on 9 December. They meet on the second Wednesday each month at 6:00 PM at Fire Station District #1. Dues are \$10 per year for individuals, \$15 for couples, and \$20 for families. See their website at [www.salemstampsociety.org](http://www.salemstampsociety.org).



**SNO-KING  
STAMP  
CLUB**

The **Sno-King Stamp Club** publishes a monthly newsletter, *Sno-King Stamp Club Philatelic News*. They held a club auction on 10 November. Their annual holiday dinner will be on 9 December. The club meets in Everett on the second Wednesday and in Edmonds on the third Friday each month. Dues are \$8 per year, \$5 for youth under 18. Website <http://sno-kingstampclub.freehostia.com>.



The **Southern Oregon Philatelic Society** publishes a monthly newsletter, *The Philatelic Reminder*. They held a club auction and election of officers in November. They are planning their annual SOPEX show on 9–10 April, and are also helping support PENPEX 5-6 December in Redwood City, California. They meet the first Thursday at 7:00 PM and third Thursday at 6:30 PM and must move their future meetings to a new location at the First Presbyterian Church in Central Point.



The **Strait Stamp Society** publishes a bi-monthly newsletter, *Strait Stamp Talk*. They held their annual stamp show on 8 August. They meet on the first Thursday each month at 6:00 PM at the Sequim Library. The club has no dues, but accepts donations. See their website at [www.straitstamp.org](http://www.straitstamp.org).

The **Tri-Cities Stamp Club** publishes a monthly newsletter, *The Triangle*. They held a joint stamp and coin show on 3–4 October in Richland, and a club auction on 28 October. They meet on the fourth Wednesday at the Charbonneau Activity Room. The December meeting will be on 16 December. Contact the club at P.O. Box 6228, Kennewick, WA 99336.

— continued on page 5

---

## Philatelic New Years

— by Lisa D. Foster, Evergreen Stamp Club

As we approach a new year, I find it is a good time to consider my New Year's resolutions for 2016. About 45 percent of Americans make resolutions each year. They are usually related to health or financial planning.

Although I may not keep all of the resolutions listed, it is said that people who explicitly make resolutions are ten times more likely to attain their goals than people who do not.

Many of the most popular resolutions are vague, and as a result, are difficult or impossible to attain. However, if we re-write them, we can achieve them through our hobby of stamp collecting.

For example, consider these common resolutions:

- Get organized
- Help others in their dreams
- Learn something new/exciting
- Spend more time with family and friends
- Enjoy life to the fullest.

As you read through my Philatelic Resolutions consider your individual or club goals for the upcoming year.

I resolve to...

- Organize my stamp room. This past year I moved my bedroom into my office and my stamp room into the master bedroom. There are still boxes of stamps and philatelic supplies stacked along the wall.
- Recruit members into the philatelic community.
- Provide one presentation at my local stamp club.
- Provide philatelic articles to club newsletters and other philatelic publications.
- Acquire material needed to create three additional frames for my current exhibit with the goal of being awarded a Vermeil ribbon.
- Fulfill the obligations of the various organizations whose positions (Secretary, Exhibit Chair, etc.) I have been entrusted with, to the best of my ability.
- Volunteer at a philatelic event.
- Attend a major stamp show.

I am sure all of our readers can accomplish one or more of these and can come up with many others that not only will provide pleasure and satisfaction, but also will help promote the hobby we all enjoy.

---

## World Stamp Show

— by Jack R. Congrove

As most of you probably know, the United States is hosting its decennial international stamp show next year in New York City. The eight-day show runs from 28 May to 4 June and will be held at the Jacob Javits Convention Center located at 655 West 34th Street in downtown.

Admission to the show is free and the organizers expect more than 200,000 people from all over the world to attend. More than 200 stamp dealers will be selling and buying stamps, covers, collections, post cards and a wide assortment of ephemera and philatelic items and supplies.

The show will have 4,000 frames of exhibits and right now they have received applications for more than 6,400 frames. I would not like to have the task of determining which exhibits will be rejected. This show will also introduce a new style of exhibit frame that is half the weight of the one currently in use.

Of course, this means that the remaining exhibits will be of the highest quality with some of the world's greatest stamp and postal rarities on display.

There will be First Day stamp release ceremonies for the US, UN, and several other nations.

Family friendly activities and events are also available including a 5,000 square foot Youth and Beginner area that includes a theater and many interactive games and projects.

There will be 60 specialty philatelic organizations covering every facet of the hobby there as well. If you are planning to attend this show (and you should as it is the premier philatelic event of the year), take time to visit some of these booths to meet other collectors that share your areas of interest.

WSS NY 2016 has partnered with Delta Airlines to provide special discounts for both domestic and international flights. They also have made arrangements with 27 New York and New Jersey hotels for discounted rates. But these properties are already nearly sold out.

See the World Stamp Show NY 2016 website at [www.ny2016.org](http://www.ny2016.org) for more details about all aspects of the show.





# Philatelic Puzzle

Associate the following statements with one of the stamps shown below to test your holiday philatelic knowledge.

- \_\_\_ 1. First worldwide stamp showing a nativity scene.
- \_\_\_ 2. First stamp issued with a Christmas inscription.
- \_\_\_ 3. This postal tax stamp was required on all Christmas mail.
- \_\_\_ 4. First stamp appearance of the Star of Bethlehem.
- \_\_\_ 5. This stamp was first to start an annual tradition of Christmas issues.
- \_\_\_ 6. First design with a traditional Christmas flower.
- \_\_\_ 7. Broke tradition of using old master paintings for religious Christmas issues.
- \_\_\_ 8. First to show a Christmas tree.
- \_\_\_ 9. First appearance of Santa Claus.

- \_\_\_ 10. First depiction of Madonna and child on a stamp.
- \_\_\_ 11. First use of children's art on Christmas stamp.
- \_\_\_ 12. First Christmas stamp showing toys.
- \_\_\_ 13. First depiction of Flight into Egypt.
- \_\_\_ 14. Second stamp to show the Magi.
- \_\_\_ 15. The colors on this stamp differ from its sheet counterpart.
- \_\_\_ 16. Users have to guess the denomination of this stamp.

The ATA has a Christmas checklist available to members. Their handbook, *Christmas Stamps of the World* (HB120), lists all Christmas stamp issues through 1991.

The Christmas Philatelic Club, formed in 1969 by Christmas stamp collectors, publishes a quarterly journal, the *Yule Log*.

(Answers on page 2.)



A

B

C

D

E

F



G

H

I

J

K



L

M

N

O

P



## UPCOMING STAMP SHOWS / BOURSES

SHOW DATES			Major shows in bold / PNW shows in italic	Revised: 24/11/2015	
FRI	SAT	SUN	SHOW NAME	LOCATION	TYPE
	5-Dec	6-Dec	<i>Salem Coin, Stamp, &amp; Postcard Show</i>	Salem, OR	Bourse
		13-Dec	<i>Fenwick Stamp &amp; Coin Show</i>	Renton, WA	Bourse
<b>2016:</b>			There is no PIPEX or NTSS scheduled for 2016		
<b>22-Jan</b>	<b>23-Jan</b>	<b>24-Jan</b>	<b>SANDICAL</b> (San Diego Co. Philatelic Council) (WSP)	<b>San Diego, CA</b>	<b>Show</b>
<b>29-Jan</b>	<b>30-Jan</b>	<b>31-Jan</b>	<b>APS AmeriStamp Expo</b> (WSP)	<b>Atlanta, GA</b>	<b>Show</b>
	30-Jan	31-Jan	<i>CESSPEX</i> (Greater Eastside Stamp Society)	Redmond, WA	Show
		14-Feb	<i>Fenwick Stamp &amp; Coin Show</i>	Renton, WA	Bourse
<b>19-Feb</b>	<b>20-Feb</b>	<b>21-Feb</b>	<b>ARIPEX</b> (Arizona Federation of Stamp Clubs) (WSP)	<b>Mesa, AZ</b>	<b>Show</b>
<b>26-Feb</b>	<b>27-Feb</b>	<b>28-Feb</b>	<b>TEXPEX</b> (TEXPEX Foundation) (WSP)	<b>Grapevine, TX</b>	<b>Show</b>
4-Mar	5-Mar	6-Mar	<i>APEX</i> (Anchorage Philatelic Society)	Anchorage, AK	Show
	5-Mar	6-Mar	<i>NOVAPEX</i> (Redding Stamp Club)	Redding, CA	Bourse
	14-Mar	15-Mar	<i>FRESPEX</i> (Fresno Philatelic Society)	Clovis, CA	Show
<b>1-Apr</b>	<b>2-Apr</b>	<b>3-Apr</b>	<b>St. Louis Stamp Expo</b> (St. Louis Clubs) (WSP)	<b>St. Louis, MO</b>	<b>Show</b>
	2-Apr	3-Apr	<i>Edmonton Spring Show</i> (Edmonton Stamp Club)	Edmonton, AB	Show
	9-Apr	10-Apr	<i>SOPEX</i> (Southern Oregon Philatelic Society)	Central Point, OR	Show
		10-Apr	<i>Fenwick Stamp &amp; Coin Show</i>	Renton, WA	Bourse
	16-Apr	17-Apr	<i>Spring Show</i> (Evergreen Stamp Club)	Kent, WA	Bourse
<b>29-Apr</b>	<b>30-Apr</b>	<b>1-May</b>	<b>WESTPEX</b> (WSP)	<b>Burlingame, CA</b>	<b>Show</b>
	30-Apr	1-May	<i>Calgary Spring Bourse</i> (Calgary Philatelic Society)	Calgary, AB	Bourse
<b>13-May</b>	<b>14-May</b>	<b>15-May</b>	<b>RMSS</b> (Rocky Mountain Philatelic Exhibition) (WSP)	<b>Denver, CO</b>	<b>Show</b>
<b>28 May–4 June</b>			<b>World Stamp Show NY 2016</b>	<b>New York, NY</b>	<b>Intl Show</b>
		12-Jun	<i>Fenwick Stamp &amp; Coin Show</i>	Renton, WA	Bourse
<b>17-Jun</b>	<b>18-Jun</b>		<b>OKPEX</b> (Oklahoma City Stamp Club) (WSP)	<b>Midwest City, OK</b>	<b>Show</b>
	16-Jul	17-Jul	<i>Summer Show</i> (Evergreen Stamp Club)	Kent, WA	Show
	30-Jul		<i>Strait Stamp Show</i> (Strait Stamp Society)	Sequim, WA	Show
<b>5-Aug</b>	<b>6-Aug</b>	<b>7-Aug</b>	<b>APS Stamp Show</b> (begins 4-Aug) (WSP)	<b>Portland, OR</b>	<b>Show</b>
		14-Aug	<i>Fenwick Stamp &amp; Coin Show</i>	Renton, WA	Bourse
<b>19-Aug</b>	<b>20-Aug</b>	<b>21-Aug</b>	<b>Royal 2016 Royale</b>	<b>Kitchener, ON</b>	<b>Show</b>
<b>9-Sep</b>	<b>10-Sep</b>	<b>11-Sep</b>	<b>SEAPEX Seattle Philatelic Exhibition</b> (WSP)	<b>Tukwila, WA</b>	<b>Show</b>
23-Sep	24-Sep		<i>VANPEX</i> (British Columbia Philatelic Society)	Vancouver, BC	Show
		9-Oct	<i>Fenwick Stamp &amp; Coin Show</i>	Renton, WA	Bourse
	15-Oct	16-Oct	<i>CALTAPEX</i> (Calgary Philatelic Society)	Calgary, AB	Show
<b>13-Nov</b>	<b>14-Nov</b>	<b>15-Nov</b>	<b>Filatelic Fiesta</b> (San Jose Stamp Club) (WSP)	<b>San Jose, CA</b>	<b>Show</b>
<b>20-Nov</b>	<b>21-Nov</b>	<b>22-Nov</b>	<b>CHICAGOPEX</b> (Chicago Philatelic Society) (WSP)	<b>Itasca, IL</b>	<b>Show</b>
		11-Dec	<i>Fenwick Stamp &amp; Coin Show</i>	Renton, WA	Bourse
<b>Repetitive Events</b>			<i>Rose City Stamp Fair</i> (2nd Saturday OSS clubhouse)	Portland, OR	Bourse
			<i>Collector's Corner</i> (4th Saturday OSS clubhouse)	Portland, OR	Bourse