

Federated Philatelist

Newsletter of the Northwest Federation of Stamp Clubs

No. 214, March 2016

Boeing Centenary

— by Jack R. Congrove

This year, 15 July marks the 100th anniversary of the incorporation of Pacific Aero Products Company. This is the organization founded by William Edward Boeing that would eventually grow to become The Boeing Company.

Last year SEAPEX chose this anniversary as its theme for 2016 and is partnering with Boeing to help celebrate this milestone.

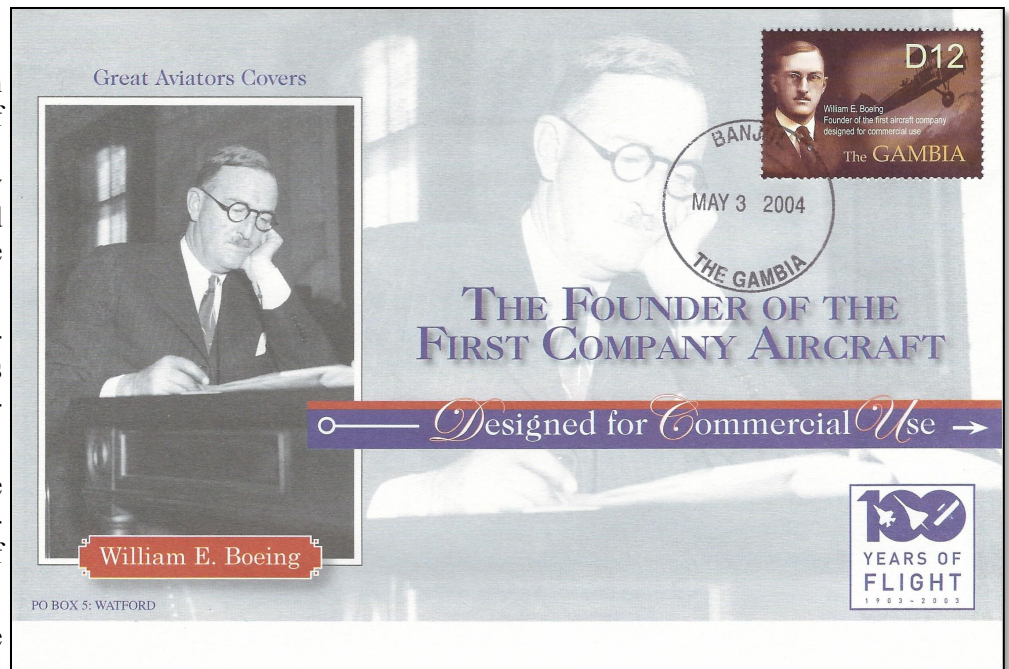
SEAPEX will be producing unique souvenir cacheted covers and pictorial cancellations for each day of the three-day show.

These souvenirs will be available for purchase at the show and will also be offered as prizes in door prize drawings each day.

Boeing has plans for several events throughout this year to recognize their anniversary. To contribute to these plans SEAPEX is preparing a philatelic exhibit to display at the Boeing Museum of Flight located at 9404 East Marginal Way South in Seattle. In the figure above is a cover from the Title page of this exhibit.

SEAPEX is fortunate to have the Evergreen Stamp Club as one of its Club Associates. This club was formerly the Boeing Employees Stamp Club and it has an archive of Boeing related material including unique maiden flight and first flight covers. The Club has graciously loaned this material to SEAPEX for inclusion in this exhibit.

Speaking of Club Associates, SEAPEX has several area clubs who assist the show with donations, volunteers, and other support. In addition to Evergreen, these include Collectors Club of Seattle, Greater Eastside Stamp Society, Puget Sound Collectors' Club, Sno-King Stamp Club, Strait Stamp Society, Tacoma Stamp Club, and Washington State Philatelic Society.



William E. Boeing First Day Cover
(from MS/6 for Centenary of First Powered Flight)

If your club is not on this list, and you want to become an Associate, please contact seapex@comcast.net.

— continued on page 3

Inside

Boeing Centenary – Jack R. Congrove.....	1
From the Editor’s Desk.....	2
Chairman’s Notes.....	3
The March of Mary Jane – Lisa D. Foster.....	4
News Items.....	5
Youth in Philately – Lisa D. Foster.....	6
Hell’s Half Acre, Wyoming – Jack R. Congrove	7
Washington First Flights – Lyman R. Caswell	8
Promoting Exhibiting – Lisa D. Foster	10
Moses Lake 2016 Symposium – David Harris.....	11
Club Activities	12
Youth Philatelic Puzzle.....	15
Stamp Show Calendar	16

Editor

JACK R. CONGROVE
P.O. Box 33092
Fort Lewis, WA 98433
253-564-0969
jackcongrove@comcast.net

Associate Editor

LISA D. FOSTER
fosteld@gmail.com

Northwest Federation of Stamp Clubs

<http://www.nwfedstamps.org>

Chairman of Board of Directors

LAWRENCE CLAY
P.O. Box 6228
Kennewick, WA 99336-0228
Phone: 509-735-3731
lclay3731@charter.net

Board of Directors

ERIC A. RANGER
New Westminster, British Columbia

DR. KEITH R. SPENCER
Edmonton, Alberta

ERIC HUMMEL
Phoenix, Oregon

Executive Secretary

Vacant

Treasurer

ALEX HADDEN
#19 – 7651 Francis Road
Richmond, B.C. V6Y1A3
Phone: 604-272-2614
alex-hadden@shaw.ca

Judging Chairman

DICKSON PRESTON
Seattle, Washington

History Chairman

LEONARD LUKENS
Phoenix, Oregon
lenlukens2@gmail.com

Webmaster

DAVID HARRIS
Medical Lake, Washington
sqpiano@gmail.com



Although 2016 is already more than six weeks old, this edition of the Federation newsletter marks the beginning of our publication new year, so I believe that I can wish everyone a safe and prosperous year of philatelic pursuits.

This year will include the decennial international stamp show held in the US. World Stamp Show-NY 2016 will take place in New York City on 28 May through 4 June.

This eight-day exhibition will feature more than 200 dealers from around the world and 4,000 frames of top quality philatelic exhibits. Those of you who can take advantage of visiting this exceptional event, will find more interesting activities than you can possibly attend.

I mention NY 2016 because it will have an impact on many other events around the country. As a result of this show, at least five of the annual World Series of Philately (WSP) national shows will not be held this year.

One of these shows is the Northwest Federation-sponsored PIPEX. Because of these cancellations, the remaining WSP shows will take on added importance. Here in the Federation area we will have three such shows this year: the Edmonton Spring Show (2–3 April), APS Stamp Show (this year in Portland 4–7 August), and SEAPEX (9–11 September).

We are fortunate to have this many opportunities in our area to attend these top level philatelic events.

One other philatelic event in the Federation area that I want to tout is the annual Arn Symposium in Moses Lake, Washington. This all day event scheduled for 9 April, includes four major philatelic presentations by noted philatelists, two auctions, and very pleasant social activities.

If you have never been to this event, you should seriously consider attending. See the article on page 11 for more details.

I am continually looking for news and articles to publish. I typically receive the regular newsletters (as either electronic or print versions) published by many of the Federation member clubs, but I have not been receiving all of them. It is very difficult to report on your club activities if I do not know about them.

Therefore, please send me an email about any activities or happenings involving your clubs or other groups so I can report the news to others.

Also, please look at your collection and send me a couple paragraphs describing an item you find interesting. Club officers, send me news about your club's activities and accomplishments. I will publish this information in upcoming editions. **Input for the next edition is due to me not later than 15 May 2016.**

— Jack R. Congrove, Editor

Answers to Philatelic Puzzle: 1-F, 2-E, 3-H, 4-G, 5-D, 6-I, 7-C, 8-A, 9-B

Boeing Centenary *(from page 1)*

SEAPEX is again arranging with the Museum of Flight to have a guided tour on Thursday, 8 September, the day before the show.

In addition to world class aircraft and spacecraft on display, the Museum has an archive of unique and wonderful historic flight covers and related philatelic material. SEAPEX will be coordinating with the archivist to view some of these items that are usually unavailable to the public.

Plans are still underway, but the show organizers hope to be able to arrange some related presentations from Boeing experts during the exhibition.

SEAPEX 2016 will be held at the Tukwila Community Center located at 12424 42nd Avenue South in Tukwila, Washington on 9–11 September. The show hours will be: Friday 10 AM–6 PM, Saturday 10 AM–5 PM, and Sunday 10 AM–4 PM.

SEAPEX expects to have more than 25 dealers and 180+ frames of philatelic exhibits.

The US Postal Service and UN Postal Administrations will each have booths at the show.

There will be a Boy Scout merit badge seminar, free stamp evaluations, presentations, and meetings. Parking and admission are free.

UPCOMING SHOWS

APEX

March 4–6

Senior Activities Center, Anchorage, AK

Edmonton Spring Show

April 2–3

Central Lions Centre, Edmonton, AB

SOPEX

April 9–10

Jackson Co. Fairgrounds, Central Point, OR

AMPEX

April 10

Mouat Secondary School, Abbotsford, BC

Evergreen Spring Show

April 16–17

Kent Commons, Kent, WA

WESTPEX

April 29–May 1

Airport Marriott Waterfront, Burlingame, CA

Chairman's Notes

Normally, this is the time of the year when preparations are in full swing for the annual PIPEX stamp show that has been held in Portland the past four years. But since there is no PIPEX this year, things are much calmer.

As a reminder, PIPEX was given a bye as a World Series of Philately show this year due to the probable effect of two major shows on a PIPEX show. First, the NY 2016 is being held in New York City from May 28–June 4. Then the American Philatelic Society is holding its annual stamp show in Portland on August 4–7.

Many of the exhibitors who normally do PIPEX will be exhibiting at the APS show and some at NY 2016. The same applies to many of the dealers. Because of this, it was felt that it would not be possible to have a successful PIPEX in 2016. The next PIPEX is scheduled for Mother's Day weekend in 2017, when things will be back to normal.

However, the Northwest Federation of Stamp Clubs (NWFSC) is still in business. First, NWFSC is sponsoring the 26th Annual Philatelic Symposium at Moses Lake, Washington on April 9. This is a great combination of philatelic presentations, silent and "noisy" auctions, and fellowship. This is truly worth your time. For more information go to the NWFSC website, or contact David Harris at sqpiano@gmail.com.

[*Ed. note: See the article about the Symposium on p.11. Also, although there will be no PIPEX this year, philatelists can still satisfy their collector desires at SEAPEX.*]

NWFSC will hold its annual general meeting at the APS Stamp Show in Portland and is tentatively scheduled for August 6. Also, plans are to present the normal NWFSC awards at the APS show. These are the Northwest Distinguished Philatelist Award, the Federation Meritorious Service Award, and the Member Club Service Award.

Please let me know if you have nominees for any of these awards. The deadline for submittal of nominations will be June 1.

I hope that you all had a nice holiday season and are still having fun and meeting the challenge of finding those "missing goodies!"

Best wishes for the rest of 2016.

— Lawrence Clay, Chairman

The March of Mary Jane

— by Lisa D. Foster, Evergreen Stamp Club

Industrial Hemp. Industrial hemp is a variety of the plant species *Cannabis sativa* that has been cultivated around the world for thousands of years. Hemp produces a larger yield per acre than do common substitutes such as cotton, and requires few pesticides. In addition, hemp has an average growing cycle of only 100 days. It is easy to grow because it requires little water or fertilizer and does not need replanting year after year.

After harvesting, various parts of the plant can be utilized in the making of products. The oil extract of the hemp seeds has been used in paints, varnishes, soaps, and for lighting. Historically, the seeds were used as bird feed and human food.

The stalks have been used to make rope, paper, and cloth. It is believed that hemp sails and rope carried Columbus to the Americas in 1492. In addition, Columbus's ships carried hemp seeds for use in case of a shipwreck to grow crops for raw materials and as a source of nutrition.



Columbus's Ships
U.S., 1992, Sc#2621



Mount Vernon
U.S., 1956, Sc#1032

George Washington cultivated hemp at Mount Vernon for industrial uses including making rope and sail canvas. The hemp fibers were spun into thread used to sew sacks and canvas and to repair the large seine fishing nets that Washington used in his fishing operation along the Potomac.

In addition, Washington used some of what he grew to make hemp clothing worn by his slaves. Colonial soldiers and sailors in the Revolutionary War were also clothed in hemp fabric. Most textiles were made from hemp until the 1820s with the introduction of the cotton gin.

Rumor has it that Benjamin Franklin owned a paper mill that made hemp paper and/or ran off hemp oil in the 1730s. Although the paper on which



Colonial Seamstress
U.S., 1977, Sc#1717



the Declaration of Independence (1776) and the Constitution (1789) were recorded was parchment, it is believed that some working drafts were composed on paper made from hemp, which was widely used at that time.

In the 1790s, hemp was grown mainly for its industrial value and for soil stabilization. Thomas Jefferson also grew hemp on his plantation for local use. In 1816, Jefferson adapted a "hemp brake" to a thrashing machine, which broke and beat about 80 pounds per day with a single horse.



Jefferson
U.S., 1966, Sc#1299

Marijuana. Industrial hemp (*Cannabis sativa sativa*), the kind that Washington and Jefferson grew, is not the same strain of the plant as *Cannabis sativa indica* that is used as a drug (marijuana). *C. sativa sativa* contains less than 0.3 percent of tetrahydrocannabinol (THC), the primary psychoactive ingredient in marijuana.

C. sativa indica grown for marijuana can contain between 6–20 percent THC. It is the psychoactive properties of its resin that led to its regulation, taxation, and prohibition.

Physicians often prescribed marijuana for its therapeutic value to treat pain, nausea, spasticity, glaucoma, movement disorders, and to stimulate appetite. The Pure Food and Drug Act of 1906 required labeling of any cannabis contained in over-the-counter remedies.



1906 Food & Drug Act
U.S., 1998, Sc#3182f

Following the Mexican Revolution of 1910, Mexican immigrants flooded into the United States and introduced the American culture to the recreational use of marijuana.

During the Great Depression, unemployment increased public resentment and fear of Mexican immigrants. By 1931, 29 states had outlawed the use of marijuana.

Harry Anslinger, the first Commissioner of the Federal Bureau of Narcotics, joined forces with newspaper publishers and started a campaign against marijuana by pointing to the



Marijuana Tax Stamp
U.S., 1937, Sc#RMJ1

— continued on page 14

Federation on Facebook

As noted in the last edition, the Northwest Federation has a Facebook page edited by Bill Ailes (*Northwest Federation of Stamp Clubs*).

The Federation Facebook page includes posts about interesting philatelic events taking place in The Great Northwest and elsewhere.

Like us on Facebook and see what is happening in the local philatelic world.

Club Activities *(from page 13)*



USS Puget Sound Chapter 74 of the Universal Ship Cancellation Society 2016 Winter Meeting will be on Saturday, 5 March 2016, at 1300 in the Coast Guard Museum/NW (Pier 36, 1519 Alaskan Way), Seattle.

If you would like to attend this Chapter meeting, please call CAPT Gene Davis, USCG (ret.) (206-217-6993, M-W-F 0900-1500) or Robert Clark (425-396-7867 after 20 February 2016) so you can be put on the official list at the Guard Gate. Please bring picture ID as well as automobile registration and insurance for driving on the US Coast Guard (Dept. of Homeland Security) Base.



The **Vancouver Island Philatelic Society** publishes a monthly newsletter, *The Guideline*. Meetings include a small auction. They plan a major auction for 26 May. The club meets at 7:30 PM on the fourth Thursday each month at St. Aidan's Church. Dues are \$20 per year. See www.vicstamps.com/vips.htm.



The **Washington State Philatelic Society** does not publish a newsletter. They meet on the second and fourth Thursday of each month at 7:00 PM at the Gethsemane Lutheran Church in Seattle.



The **Northwest Federation of Stamp Clubs** will hold its annual meeting at the APS Stamp Show in Portland, Oregon on 6 August 2016.

[Ed. note: If you would like to have news about your club activities and upcoming plans published in future columns, please email either me (jackcongrove@comcast.net) or Lisa Foster (fosteld@gmail.com) with the details.]

Letters

In response to the article "Club Presentations and Programs" in the December issue, Neil Donen of the Vancouver Island Philatelic Society wrote, "I draw to yours, and your readership's attention to the local website we have here in Victoria (<http://www.vicstamps.com>). It includes all our local listings and the presentations made by different club members over the past couple of years."

Review of the site revealed many interesting presentations including, "German POW's in Siberia, WWI;" "Early Victoria-California Mail: Types and Varieties;" and "RAF Ferry Command Mail." Thank you for sharing!

SEAPEX Loan Repayment

The Seattle Philatelic Exhibition has made another \$500 installment payment on the \$2000 loan from the Northwest Federation of Stamp Clubs. The Federation made this loan for use as operating capital when SEAPEX was beginning their effort to become a World Series of Philately exhibition. This payment leaves a balance of \$1000.

Pacific Northwest Stamp Issue

On 17 January, the US Postal Service issued a new stamp to pay the Express Mail rate. The stamp was issued on a Sunday without ceremony in Washington, DC. The issue date coincides with the rate change.



Express Mail Stamp
Record High Denomination

The stamp depicts the Columbia River Gorge and has the highest denomination ever for a regular US postage stamp.

Approximately 80 miles long and up to 4,000 feet deep, the gorge runs along the Columbia River, which forms part of the border between Oregon and Washington.

The stamp art captures the beauty of the Columbia River as it winds its way through the steep cliffs of the Cascade Mountain Range. The historic Vista House, sits atop Crown Point, overlooking the river 725 feet below, seen on the stamp in the setting sun.

Youth in Philately

— by Lisa D. Foster, Associate Editor

When I think of Spring, I recall many happy memories as a child participating in scavenger hunts and Easter egg hunts. In the Pacific Northwest, the month of March is still during the rainy season and so I suggest you stay inside, grab your magnifying glasses, and search for those hidden numbers and words on stamps.

Microprinting is very small print or image hidden in the stamp design. You cannot see these with the naked eye, but typically must use a strong magnifier. You will need a magnifying glass with at least 4× magnification to see the microprinting on your stamps.

Microprinting on US stamps started in 1992 as a way to deter counterfeiting. The first such stamps were the Christmas Toys stamps (Sc#2711–14). In these stamps, portions of the wheels are shaded with magenta dots.

In later years, the postal service used words or numbers. For example, the words “OUR TOWN” appear on the 1997 32 cent Thornton Wilder stamp (Sc#3134). A variety of words appeared on stamps issued in 1997: “PASSPORT TO FREEDOM” (Sc#3135), “GREEN BAY” (Sc#3147), “ALABAMA” (Sc#3148), “YOUTH LEAGUE” (Sc#3149) and “TM” (Sc#3152)

On some of the 1997 stamps, a word was microprinted multiple times, or more than one word was microprinted: “LOVE” two times on Sc#3123–24; “UNITED STATES AIR FORCE” four times and “THUNDERBIRDS” one time on Sc#3169; “X-1” once, “USPS” three times, and “GLAMOROUS GLENNA” one time on Sc#3173; “ARMY,” “USMC,” “NAVY,” “USAF,” and “USCG” on Sc#3174; and “HOLIDAY GREETINGS” and “USPS” on Sc#3177.

In 1998, the majority of the stamps were microprinted with “USPS” (Sc#3180–81, 3193–97, 3222–25, and 3261–62). Fun words to find would be “STAMPEDERS” on the Klondike Gold Rush stamp (Sc#3235) and “JOHN BROWN’S BODY” on Sc#3221.

The 1999 stamp issues provide a variety of entertaining words. On the 33c John and William Bartram stamp (Sc#3341), the word “BOTANISTS” is microprinted on the upper right petal of the flower in the stamp design.

Other words include “IRELAND” (Sc#3286), “ACTORS” (Sc#3287), “NOVELIST” (Sc#3308) and “GOLD RUSH” (Sc#3316). A complete list of microprinted stamps from 1999 can be found at <http://stampnews.8m.com/microprinting.html>.

From 2000 and on, the most microprints were the letters “USPS.” In 2000, these US stamps were microprinted with “USPS:” Sc#3371, 3372, 3391, 3392, 3397, 3411, 3413, 3436, 3448, 3449, and C135.

“DRAGON” appeared on #3370, “SAMOA” on #3389, “2000” on #3398 and #3445, and “AUTHOR” on #3444.

In 2001, the following US stamps were microprinted with “USPS:” Sc#3468A, 3469–70, 3482–83, 3484A, 3491–94, 3496–3500, 3501, 3503, 3507, 3509, 3521, 3523, 3533, 3546, 3549, 3551, C136, and C138. “USA” appeared on Sc#3508 and “USA2001” repeated ten times on Sc#O158.

In 2002, the following US stamps were microprinted with “USPS:” Sc#3557, 3559, 3616, 3618–19, 3623, 3635, and 3675. “USA” appeared on Sc#3620–21, 3629F, and 3630.

In 2003, the following US stamps were microprinted with “USPS:” Sc#3747, 3749, 3749A, 3766, 3773–74, 3781, 3784A, and 3803. “USA” was printed on Sc#3784.

In 2004, the following US stamps were microprinted with “USPS:” Sc#3829A, 3830, 3870–71, 3436c, and 3879–81. “XXVIII OLYMPIAD” was printed on Sc#3863.

In 2005, the following US stamps were microprinted with “USPS:” Sc#3905, 3911, 3930, 3936, 3749B, 3965–66, and 3970 The formulas “c-ml” appeared on Sc#3906, “dU=TdS-PJV” on Sc#3907, and “alpha=1/137” on Sc#3909. “USA” was printed on Sc#3633B.

In 2006, the following US stamps were microprinted with “USPS:” Sc#3752, 3978, 3981, 3995–96, 3998–4000, 4018–19, 4032, 4040, 4077, 4100, 4118–19, and C139–40. The date “2006” appeared on Sc#O161.

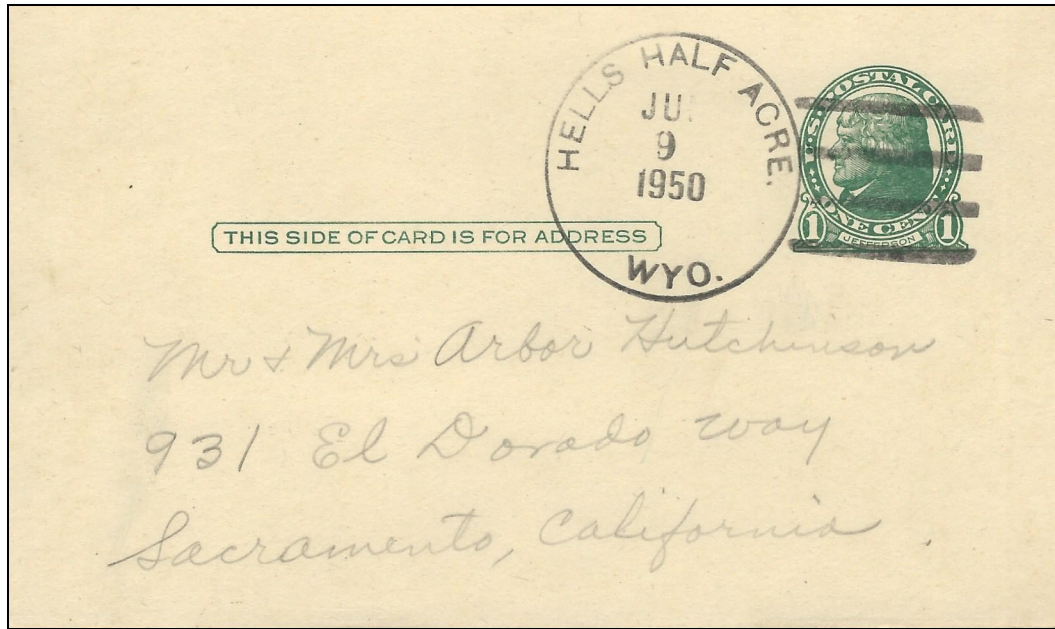
The microprinting of “USPS” on Sc#3752 is located on the end of the second squash blossom on the right side of the necklace. The photo shows the section under magnification.

— continued on page 9



Microprinting (Sc#3341)

Hell's Half Acre, Wyoming



— by Jack R. Congrove

The postmark of this otherwise non-descript postal card is what caught my eye. The name is interesting by itself, but who would want to name their hometown something like this and further who would want to live in such a place?

This one-cent postal card (Sc#UX27) has an imprint of a bust of Thomas Jefferson in green on buff colored card stock. It was first issued on 4 June 1914. This card was a real workhorse for the postal system and was reprinted many times during its 37-year run.

There exist double, triple, and quadruple impressions of this card that have catalog values in the four-figure range, but unfortunately, this particular card has got none of that going for it.

This card paid the one-cent postcard rate to anywhere in the US in effect since 1 July 1919. The rate was raised to two cents on 1 January 1952.

The card is postmarked with a Type 4B four-bar cancel dated 9 June 1950. The last letter of the month is incomplete, but the message side of the card has an 8 June date. The message is a merely short note indicating the visitors are on their way home.

Hell's Half Acre is an escarpment area that actually covers 320 acres (not just a half acre) located about 40 miles (64 km) west of Casper, Wyoming. It is composed of deep ravines, caves, and unusual rock formations.

Native Americans used the location as a buffalo jump to trap the animal herds for slaughter.



Rock Formations in Hell's Half Acre

The area was used to film scenes for the fictional planet Klendathu in the 1997 movie *Starship Troopers*.

So how did a post office wind up there? There never was an incorporated community named Hell's Half Acre.

A postal station was established in a souvenir shop co-located with a motel and restaurant serving sight-seers and travelers along US Route 20/26. This contract postal station operated between 1940 and 1959.

The owners closed and abandoned the motel and restaurant in 2005. The buildings were subsequently demolished and the area is now under the control of Natrona County.

Access to the area is restricted.

Some Washington First Flights

— by Lyman R. Caswell

Recently I had the opportunity to examine a large accumulation of covers. Among these covers were several first flight covers of airmail routes that served various locations in the Pacific Northwest. This article will deal with Washington State routes.

U.S. Contract Air Mail Route No. 5. On June 2, 1934, a stop at Pendleton, Oregon, was added to Air Mail Route No. 5 between Seattle and Spokane in order to receive air mail from Salt Lake City.

On December 4, 1937, a stop at Walla Walla was added to the Pendleton to Spokane arm of the route. A first flight cover with an attractive magenta cachet was prepared for the first flight out of Walla Walla, which went to Spokane.

This flight was piloted by Ralph J. Gibbons and carried 134 mail pieces. The cover shown in Figure 1 is postmarked at Walla Walla at noon on December 4.

Covers carried on the return flight from Walla Walla to Pendleton were postmarked at 3 PM. The return flight was also piloted by Gibbons, and carried only 19 mail pieces.

Seattle-Juneau Route F. A. M. 20. Airmail from Seattle to Ketchikan and Juneau was carried on a first flight on June 20, 1940. The contractor was Pacific Alaska Airways, Inc. The route connected with F. A. M. 15/16, which went on to Whitehorse, Yukon, and Fairbanks, Alaska.

The first flight cover (Figure 2) has a purple cachet showing a flying boat, and is postmarked at 9 AM on June 20 at Seattle Terminal Annex. The airplane was an S-42-B Alaskan Clipper (NC16735) piloted by Captain S. E. Robbins, and carried 29,565 mail pieces.

The return flight was delayed by bad weather until June 22, and was piloted by Captain W. J. Jones. It carried 21,655 mail pieces.

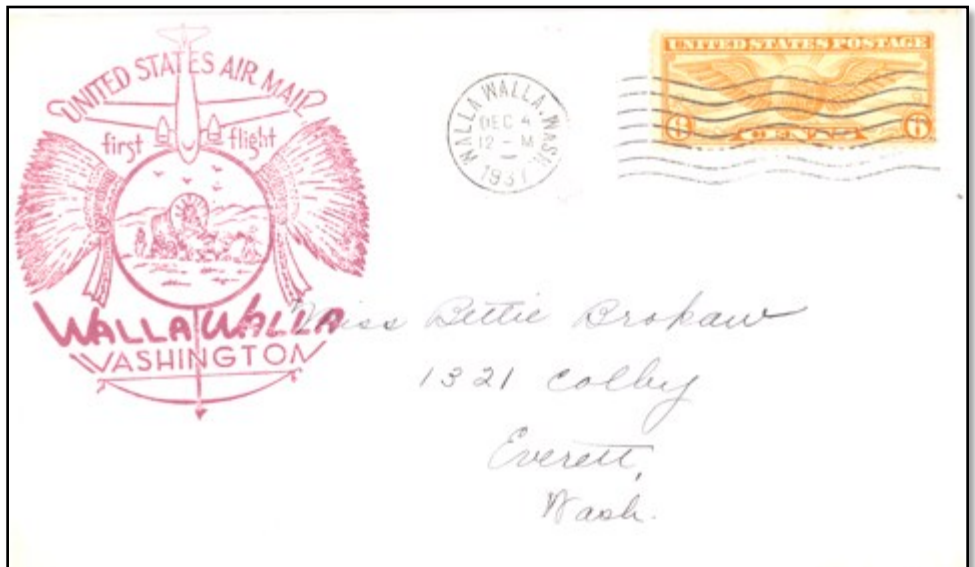


Figure 1. Contract Air Mail Route No. 5



Figure 2. Foreign Air Mail Route 20

The F. A. M 20 service was twice a week. It initiated passenger service on June 24, 1940. In March, 1941, F. A. M. 15/16 was merged into F. A. M. 20, eliminating the need to transfer mail between airplanes at Juneau.

U. S. Air Mail First Route No. 77, Segment No. 7. Inaugural service of United States Air Mail Route No. 77, on West Coast Airlines, between Seattle and Portland occurred on December 5, 1946. Over time, several extensions (“Segments”) were added to this route, extending it both north and south.

Segment No. 7, from Seattle to Walla Walla, with stops at Ellensburg, Yakima, and the Tri-Cities, was added on Sep-

Some Washington First Flights (from page 8)



Figure 3. US Air Mail First Route No. 77

September 28, 1952. Figure 3 shows a first flight cover for the Ellensburg to Walla Walla part of Segment No. 7, with a purple cachet showing a map of the entire segment.

This first flight of Segment No. 7 was piloted by Houghton H. Whithed and carried 987 mail pieces. The cover is postmarked at Ellensburg at 10 AM on September 28, and has a receiving postmark of Walla Walla, dated September 28 at 2 PM.

Acknowledgment. Thanks are due to Sarah Garmire for permission to write up descriptions of these covers.

American Air Mail Catalogue, Fifth Ed., Vol. 2, 1977, p. 541; Vol. 3, 1978, pp. 1057–59; and Sixth Ed., Vol. 3, 2005, pp. 257–58.

Youth in Philately (from page 6)

In 2007, the following US stamps were microprinted “USPS:” Sc#3749, 3753–54, 4120–21, 4124, 4129–30, 4132–33, 4136–37, 4139–40, 4144–45, 4151, 4164–65, 4186–87, 4190–91, 4196–97, 4199–4201, 4205–06, 4219–20, and C142. The word “FOREVER” was printed on Sc#4126–27.



USPS Microprinting

In the 2008, the following US stamps were microprinted with “USPS:” Sc#3427A, 3432A, 3749A, 3756A, 3758A, 3763, 4232–39, 4263–69, 4271, 4334–35, 4346–48, 4350, 4359–62, 4372–73, and 4393.

Happy Hunting!

Special thanks to Carol Edholm, creator of *Youth Stamp Collectors Educators Manual, Projects and Ideas*, which was the main resource for this article.

Edmonton: Gateway to the North



Edmonton Stamp Club 2016 SPRING STAMP SHOW

April 2–3, Sat 10–5, Sun 10–4

NEW LOCATION

Central Lion's Recreational Centre
113 Street & 111 Avenue

Stamps for sale, Junior Table, Exhibits,

WSP: Grand Award competes in APS Champions
Wine & Cheese Reception, BNAPS Breakfast, more

FREE ADMISSION

www.EdmontonStampClub.com

Promoting Exhibiting

— by *Lisa D. Foster, Northwest Federation*

Many clubs invite members to bring a cover or another philatelic item to share at meetings. After these presentations, I almost always know more about the item than I did beforehand. In addition, I learn which members share my collecting interests and who to go to with questions in the future. Because of this, I frequently have difficulty choosing just one item from my collection that I want to share.

Exhibiting is just another form of Show & Tell, but the presenter can display multiple items. In addition, exhibiting can be used to promote philately and introduce the public to the hobby.

At their monthly meetings, the Strait Stamp Society holds Show & Tell by members. The monthly themes are letters of the alphabet, starting with the letter “A,” and ending with the letter “Z.”

In January 2016, they were on the letter “K.” Participants create a one page exhibit of anything related to that month’s letter. For example, if the letter was “C,” the exhibit could be about cats, Canada, cancels, etc. The possibilities are limited only by imagination.

Jim Kloetzel came with examples of patriotic covers by P. K. Kimmel, who was renown for his covers of the Civil War era. Kimmel design patriotic covers are among the finest patriotic designs produced and are generally rare.



Jim Kloetzel with some Kimmel cover examples

Kimmel covers with Kimmel’s imprint represent a fraction of those sold and are very rare.

In 2015, the Salem Stamp Society started the “Frame of the Month” program where members informally exhibited

in a small frame one of their collecting interests. It was a success and they plan to continue into 2016. In November 2015, David Morelli presented on his collection from and about the 1972 Olympics in Munich, Germany and talked about his experiences being there.



Lisa Janz with her “Frame of the Month”

In honor of National Stamp Collecting Month in October, the Inland Empire Philatelic Society had displays at the Spokane Valley, Millwood, and Moran Prairie libraries.

In the fall 2015, the Edmonton Stamp Club had a Wild Life Topical Display by member Ken Kluchky at the Edmonton Library. Consider working with your local library to have an annual, quarterly, or monthly exhibit.

Some clubs, including the Evergreen Stamp Club, have had members create 16 one-page exhibits with or without a theme as a Club Showcase and entered them at PIPEX, SEAPEX, and other regional/local exhibitions. This is a good way to introduce others to your club members’ collecting interests and a source of advertising for your club. Consider entering your club’s showcase at SEAPEX 2016.

If you are an experienced exhibitor, offer to mentor individuals to assist them in expanding their collection into an exhibit. Or reach out to more members and provide a presentation to members on exhibiting.

You can create your own, or the American Association of Philatelic Exhibitors (AAPE) has a free online “How to Create a Philatelic Exhibit” PowerPoint. There is also a companion PDF file that can be printed out and used as a one frame exhibit. In addition, the website has handouts such as “How to Construct a Title Page.”

How does your club promote exhibiting amongst members? Please share your ideas and experiences with us all. Write Lisa Foster at fosteld@gmail.com.

Moses Lake 2016 Symposium

— by David Harris, *Inland Empire Philatelic Society*

The program is finished and we are ready to launch the John D. Arn Philatelic Symposium at Moses Lake, Washington for 2016.

The date is 9 April and the location is the Best Western Motel and Conference Center in Moses Lake.

This symposium was first begun in 1990 by John Arn of the Inland Empire Philatelic Society in Spokane Washington. The purpose was to attract philatelists from around the northwest to a central location to share thoughts and ideas on philately and establish fellowship amongst the clubs and collectors in the Pacific Northwest.

The end result was that the symposium exceeded anything John expected. As time went by, John had to give up his work because of health reasons.

Due to an ownership change, the conference center began charging for the meeting room and the Northwest Federation of Stamp Clubs took over that expense. Ruth Caswell and I took over the “management” of the symposium.

The 2016 event is pretty much intact from the way John started it. The four speakers will be David Snow, David Oldfield, Bill Ailes, and Jim Hirstein. In addition to possible five-minute clothesline presentations, the event will

include a very well attended silent and live auction, an excellent lunch and supper, and a chance to catch up on events with fellow collectors and friends from across the Pacific Northwest.

We sincerely invite you to join us at this years event. A registration form and a copy of the program are available on the Northwest Federation website (nwfedstamps.org) and I will be happy to answer any questions you may have at sqpiano@gmail.com. I am not on any of the social media sites.



Luncheon at the 2006 Moses Lake Symposium
Founder John Arn is in the plaid shirt at right

**Seattle
Philatelic Exhibition
SEAPEX 2016**

**an APS-accredited
NATIONAL Stamp Exhibition**

100th Anniversary



**Boeing Aircraft
Seattle**

**FREE PARKING
FREE ADMISSION**

**25+ Stamp Dealers
160+ Frames of Exhibits
USPS Postal Booth
Scout Merit Badge Seminar
Society Meetings & Seminars
Show Cachet and Cancellation
What's in Your Attic Evaluations
Free Stamps for Youth/Educators**

September 9–11, 2016
Fri. 10AM–6PM
Sat. 10AM–5PM
Sun. 10AM–4PM

**Tukwila Community Center
12424 42nd Avenue South
Tukwila, Washington**

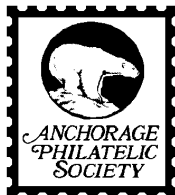
<http://www.seapexshow.org>
Facebook: Seapex: Seattle Philatelic Exhibition



Club Activities



The **American Air Mail Society—Northwest Chapter** has not published a recent edition of the *Air Mail Northwest* newsletter. The chapter has no website. Dues are \$8 per year.

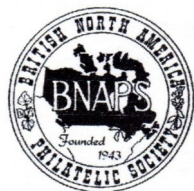


The **Anchorage Philatelic Society** publishes *The Anchorage Philatelist* newsletter. The club held its Christmas party on 14 December. They are currently preparing for APEX 2016 on 4–6 March. They expect many youth exhibits from local school children. Dues are \$10 per year, \$15 for families, and \$2 for youth. www.anchoragephilatelic.org.

The **Bellingham Stamp Club** has not produced a recent newsletter. They have joined with another club in Lynden and are meeting with them for an interim period.



The **British Columbia Philatelic Society** has not been publishing their *BC Philatelic Newsletter*. Meetings are each Wednesday at 7:30 PM at West Burnaby United Church. The third Wednesday is auction night. Dues are \$20 per year for individuals, \$30 for families, and \$7.50 for students younger than 18. See their website: www.bcphilatelic.org.



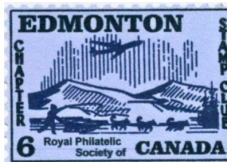
The **British North America Philatelic Society** (Pacific Northwest Regional Group) publishes the *West Coast Express*. In our area are the Calgary, Edmonton, and Pacific Northwest chapters. The PNW Chapter publishes the *British Columbia Postal History Newsletter*. BNAPS plans to have a booth at NY 2016 and will hold their annual meeting in Chilliwack, BC, 29 April–1 May. Dues are \$10 per year for all. See their website: <http://bnaps.org/regional.php>.



The **Collectors Club of Seattle** does not publish a newsletter. They hold an auction on the first Friday of each month. They have an extensive philatelic library. The club is open on the first Friday at 6:30 PM and on Tuesdays from 11:30 AM to 1:00 PM at the Maple Leaf Evangelical Church. Dues are \$20.

The **Eagle Stamp and Postcard Club** does not publish a newsletter. They held their Christmas party on 11 December. They hold auctions about four times per year. They meet on the first Tuesday each month at 7:00 PM at the

Eagle Methodist Church. See their website: <http://www.eaglestampandpostcardclub.com/>.



The **Edmonton Stamp Club Bulletin** for January had an article about Romanian propaganda stamps from the Cold War period. Each monthly edition is full of interesting news and articles. They are preparing for their Spring National Show on 2–3 April. They meet on second and fourth Mondays at 6:30 PM at St. Joseph High School. Dues are \$30 per year for individuals, \$40 for families. There is a one-time \$5 fee for a name tag. See www.edmontonstampclub.com.

The **Evergreen Stamp Club** held their Christmas dinner on 16 December. They are helping support the SEAPEX Boeing anniversary theme (see page 1). The next club show is scheduled for 16–17 April. They meet on the third Wednesday each month at 7:00 PM at Kent Commons. Dues are \$20 per year. See <http://stamps.org/Evergreen-Stamp-Club>.

The **Garden City Stamp Club** does not publish a newsletter. They meet on the first Wednesday and Third Monday each month at 7:00 PM at the Atonement Lutheran Church in Missoula. See <http://gardencystampclub.com/>.

The **Gastineau Philatelic Society** does not publish a newsletter. They meet on the third Thursday each month at 6:00 PM at various the Mendenhall Public Library.

The **Greater Eastside Stamp Society** publishes the *GESS Newsletter*. They held their annual GESSPEX stamp show on 30–31 January. They meet on the first and third Thursday each month at 7:00 PM at Unity Church of Bellevue.



The **Greater Eugene Stamp Society** publishes *Echoes* bimonthly newsletter. The January issue had the first of a series of articles on South Africa se-tenant stamps. They meet on the second and fourth Wednesday each month at 7:00 PM at Saint Jude's Catholic Church. Dues are \$15 per year, \$5 for youth under 18. They have a new website: <http://greatereugenestampclub.weebly.com/>.

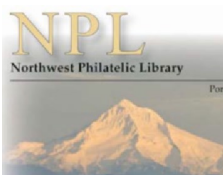


The **Inland Empire Philatelic Society** publishes *The Lilac Hinge*. They will hold their Apple Blossom bourse on 2–3 April. They have been holding monthly auctions and plan a joint meeting with the Missoula Stamp Club in May. They have a new meeting place at the Spokane

Club Activities (from page 12)

Valley Eagles hall on the second and fourth Tuesday each month at 7:00 PM. Dues are \$10 per year for individuals, \$15 for families, and \$5 for youth under 18. See their website at www.ieps-stamps.com.

The **Linn County Philatelic Society** does not publish a newsletter. They meet on the second Thursday each month at 7:00 PM at The Villas. See their website at www.albanystampclub.com.



The **Northwest Philatelic Library** publishes a quarterly electronic newsletter, *Book Reports*. The Winter edition includes a detailed article on the so-called "Persian Rug" high value US revenue stamps. Several new publications have been added to the library collection. Dues are \$12 for those 18 and older, \$3 for under 18. See their website: <http://www.nwpl.org/>.

The **Okanagan Mainline Philatelic Association** publishes the *OMPA News*. They meet five times a year. In January, March, May, September, and November. Dues are \$10 per year, \$14 for Family, and \$2 for Junior (under 16).

The **Olympia Philatelic Society** does not publish a newsletter. They meet at 7:30 PM on the second and fourth Monday each month at the Olympics West Retirement Inn. Dues are \$10 per year. See their website at <http://olympiaphilatelicsociety.org/>.

The **Olympic Philatelic Society** does not publish a newsletter. They meet at 7:00 PM on the second and fourth Tuesday each month at the Silverdale Community Center.



The **Oregon Stamp Society** publishes a monthly newsletter, *The Album Page*. Each edition has an article on the featured cover of the month. The club is celebrating its 100th anniversary this year. Congratulations! Meetings are on the second and fourth Tuesday each month at their club house. Dues are \$24 per year for regular members, \$16 for associate members who reside outside the area. Website: www.oregonstampsociety.org.

The **Pacific Northwest Postal History Society** publishes a quarterly journal, *The Oregon Country*, but no issue has been received recently. The society website is out of date and is being revised. Dues are \$20 per year.

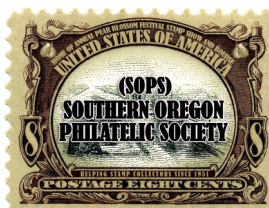
The **Peace Arch Stamp Club** does not publish a newsletter. They meet at 5:30 PM on the first Wednesday of the month (except July and August). Dues are \$10 per year. See new website <http://www.peacearchstampclub.com/>.



The **Salem Stamp Society** publishes a monthly newsletter, *Willamette Stamp & Tongs*. The club will hold their Stampex bourse on 20 March. They celebrated their 83rd anniversary at the February meeting. They meet on the second Wednesday each month at 6:00 PM at Fire Station District #1. Dues are \$10 per year for individuals, \$15 for couples, and \$20 for families. See their website at www.salemstampsociety.org.



The **Sno-King Stamp Club** publishes a monthly newsletter, *Sno-King Stamp Club Philatelic News*. They will hold their annual stamp bourse on 6 March. The club meets in Everett on the second Wednesday and in Edmonds on the third Friday each month. Dues are \$10 per year, \$5 for youth under 18. Website <http://sno-kingstampclub.freehostia.com>.



The **Southern Oregon Philatelic Society** publishes a monthly newsletter, *The Philatelic Reminder*. They held a club auction and election of officers in November. They are planning their annual SOPEX show on 9–10 April. Officers were re-elected in November. They meet the first Thursday at 7:00 PM at a new location at the First Methodist Church in Medford. They hold swaps at members' homes on the third Saturday afternoons. Dues are \$15 per year.



The **Strait Stamp Society** publishes a bi-monthly newsletter, *Strait Stamp Talk*. Their March meeting will feature Show & Tell using the letter "M." They meet on the first Thursday each month at 6:00 PM at the Sequim Library. The club has no dues, but accepts donations. See their website at www.straitstamp.org.

The **Tri-Cities Stamp Club** publishes a monthly newsletter, *The Triangle*. They conducted a Pass the Plate stamp selection event at their January meeting. They meet on the fourth Wednesday at the Charbonneau Activity Room. Dues are \$10 per year for adults, \$1 for students. Contact the club at P.O. Box 6228, Kennewick, WA 99336.

— continued on page 5

The March of Mary Jane (from page 4)

association of the drug with the primary users at that time; poor Mexican and black workers.

Although the American Medical Association opposed it, Congress passed the Marijuana Tax Act in 1937. This was an attempt to control and eliminate marijuana use through the imposition of an annual occupational tax on those who dealt in, or possessed marijuana. It also imposed a tax upon all transfers of marijuana, with stamps reflecting payment.

During World War II, imports of hemp and other materials used for producing marine cordage, parachutes, and other military necessities became scarce.

The U.S. Department of Agriculture launched a “Hemp for Victory” program, and encouraged farmers to grow hemp for the war effort by handing out seeds and granting draft deferments for participants. By 1943, American farmers registered in the program harvested 375,000 acres of hemp.

Following the war, the government resumed the initiative to reduce hemp use and passed the Narcotics Control Act in 1956, which set mandatory sentences for drug-related offences, including marijuana.

In the 1960s, the culture of rebellious freedom and increased use of marijuana among white upper class Americans contributed to more lenient attitudes among the populous. And in 1969, the Supreme Court held the Marijuana Tax Act unconstitutional on self-incriminating grounds.

In 1970, the Comprehensive Drug Prevention and Control Act (more commonly known as the Controlled Substances Act) was signed into law by President Richard Nixon as part of his “war on drugs” campaign.

Nixon temporarily classified marijuana as a Schedule One drug indicating it had a high potential for abuse, no accredited medical use, and a lack of accepted safety.

In 1976, Jimmy Carter, whose campaign platform included marijuana decriminalization, was elected President. In 1977, the Senate Judiciary Committee voted to eliminate

mandatory federal sentences for possession of small amounts of marijuana.

The election of Ronald Reagan began an expansion on the “War on Drugs” in the 1980s. The President’s wife, Nancy, led a highly publicized anti-drug campaign, “Just Say No.”

Beginning with Arizona in 1983, states revived the taxation of marijuana as part of the new campaign. In total, 25 states issued tax stamps that the drug dealer was required to put on the stash at the time of sale to prove that the tax was paid.

Compliance with the law was minimal as payment did not legalize marijuana possession, and dealers feared disclosing their profession. As a result, most of the tax stamps have been sold to collectors.

In addition, to the states that used tax stamps, at least five other states have taxed marijuana, but did not use stamps. Georgia and Indiana use receipts. Florida, Montana, and New Mexico have since repealed their drug tax laws.



Agriculture for Defense
U.S., 1940, Sc#899

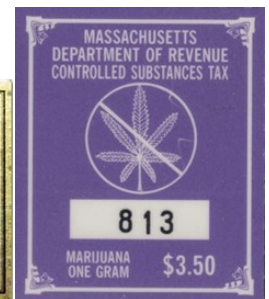


Abuse Prevention
U.S., 1971, Sc#1438



Arizona tax stamp

State tax stamps



Psychedelic entertainer
U.S., 2014, Sc#4916

In recent years, some states have adopted a legally controlled market for marijuana where consumers can buy marijuana for personal use from a safe legal source. This policy, generally known as legalization, was adopted by voter initiative in 2012 in Washington (I-502) and Colorado (A-64).

Oregon (Measure 91) and Alaska (Ballot Measure 2) followed suit and passed legalization bills in November 2014. Legalization advocates are preparing to put similar measures on ballots in 2016 in Arizona, California, Maine, Massachusetts, and Nevada.



Washington tax stamp

Youth Philatelic Puzzle

In recognition of the egg hunt tradition associated with the Easter holiday, here is a challenge for our philatelic youth. Find the Easter stamp that matches each description.

- ___ 1. Easter Egg decorated in Poland.
- ___ 2. Donald Duck painting Easter Eggs.
- ___ 3. The Easter Bunny tried to mail his egg.
- ___ 4. Easter Lily flower with Queen Elizabeth II.
- ___ 5. Easter cake (pinca), Dalmatian braided bread.

- ___ 6. Three *pysankas*, Ukrainian Easter Eggs, with loaf of Easter bread.
- ___ 7. Chip & Dale find acorns inside their Easter Egg.
- ___ 8. Goofy on and Easter Egg “trip.”
- ___ 9. Easter Bunny visits Korea?

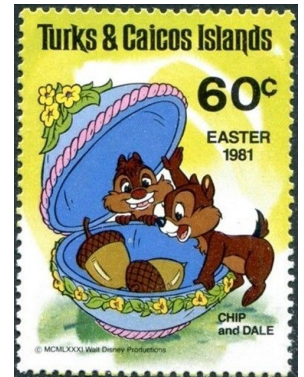
The ATA has an Easter checklist available to members.
(Answers on page 2.)



A



B



C



D



E



F



G



H



I

UPCOMING STAMP SHOWS / BOURSES

SHOW DATES			Major shows in bold / PNW shows in <i>italic</i>	Revised: 17/2/2016	
FRI	SAT	SUN	SHOW NAME	LOCATION	TYPE
2016:			There is no PIPEX or NTSS scheduled for 2016		
4-Mar	5-Mar	6-Mar	<i>APEX (Anchorage Philatelic Society)</i>	Anchorage, AK	Show
	5-Mar	6-Mar	NOVAPEX (Redding Stamp Club)	Redding, CA	Bourse
		6-Mar	<i>Sno-King Stamp Club Show</i>	Everett, WA	Bourse
	12-Mar	13-Mar	FRESPEX (Fresno Philatelic Society)	Clovis, CA	Show
		20-Mar	<i>Spring STAMPEX (Salem Stamp Society)</i>	Salem, OR	Bourse
1-Apr	2-Apr	3-Apr	St. Louis Stamp Expo (St. Louis Clubs) (WSP)	St. Louis, MO	Show
	2-Apr		<i>Coin & Stamp Fair (North Shore Numismatic Soc.)</i>	Burnaby, BC	Bourse
	2-Apr	3-Apr	Edmonton Spring Show (Edmonton Stamp Club)	Edmonton, AB	Show
	2-Apr	3-Apr	<i>Inland Empire Philatelic Society Apple Blossom</i>	Spokane, WA	Bourse
	9-Apr		<i>John D. Arn Stamp Symposium (NWFSC)</i>	Moses Lake, WA	Education
	9-Apr		<i>Roundup Stamp Show (Olympia Philatelic Society)</i>	Chehalis, WA	Show
	9-Apr	10-Apr	<i>SOPEX (Southern Oregon Philatelic Society)</i>	Central Point, OR	Show
		10-Apr	<i>Fenwick Stamp & Coin Show</i>	Renton, WA	Bourse
		10-Apr	<i>AMPEX (Fraser Valley Philatelic Club)</i>	Abbotsford, BC	Show
	16-Apr	17-Apr	<i>Spring Show (Evergreen Stamp Club)</i>	Kent, WA	Bourse
29-Apr	30-Apr	1-May	WESTPEX (WSP)	Burlingame, CA	Show
	30-Apr	1-May	<i>Calgary Spring Bourse (Calgary Philatelic Society)</i>	Calgary, AB	Bourse
13-May	14-May	15-May	RMSS (Rocky Mountain Philatelic Exhibition) (WSP)	Denver, CO	Show
28 May–4 June			World Stamp Show NY 2016	New York, NY	Intl Show
	28-May		<i>Coin & Stamp Fair (North Shore Numismatic Soc.)</i>	Burnaby, BC	Bourse
		12-Jun	<i>Fenwick Stamp & Coin Show</i>	Renton, WA	Bourse
17-Jun	18-Jun		OKPEX (Oklahoma City Stamp Club) (WSP)	Midwest City, OK	Show
	16-Jul	17-Jul	<i>Summer Show (Evergreen Stamp Club)</i>	Kent, WA	Show
	30-Jul		<i>Strait Stamp Show (Strait Stamp Society)</i>	Sequim, WA	Show
5-Aug	6-Aug	7-Aug	APS Stamp Show (begins 4-Aug) (WSP)	Portland, OR	Show
		14-Aug	<i>Fenwick Stamp & Coin Show</i>	Renton, WA	Bourse
19-Aug	20-Aug	21-Aug	Royal 2016 Royale	Kitchener, ON	Show
9-Sep	10-Sep	11-Sep	SEAPEX Seattle Philatelic Exhibition (WSP)	Tukwila, WA	Show
	17-Sep	18-Sep	<i>Coin & Stamp Fair (North Shore Numismatic Soc.)</i>	Burnaby, BC	Bourse
		18-Sep	<i>Fall STAMPEX (Salem Stamp Society)</i>	Salem, OR	Bourse
23-Sep	24-Sep		<i>VANPEX (British Columbia Philatelic Society)</i>	Vancouver, BC	Show
	24-Sep	25-Sep	<i>Inland Empire Philatelic Society Apple Harvest</i>	Spokane, WA	Show
30-Sep	1-Oct	2-Oct	BNAPEX (BNA Philatelic Society)	Frederickton, NB	Show
	1-Oct	2-Oct	<i>Tri-Cities Stamp Show (Tri-Cities Stamp Club)</i>	Richland, WA	Bourse
		9-Oct	<i>Fenwick Stamp & Coin Show</i>	Renton, WA	Bourse
	15-Oct	16-Oct	<i>CALTAPEX (Calgary Philatelic Society)</i>	Calgary, AB	Show
13-Nov	14-Nov	15-Nov	Filatelic Fiesta (San Jose Stamp Club) (WSP)	San Jose, CA	Show
20-Nov	21-Nov	22-Nov	CHICAGOPEX (Chicago Philatelic Society) (WSP)	Itasca, IL	Show
	25-Nov		<i>Coin & Stamp Fair (North Shore Numismatic Soc.)</i>	Burnaby, BC	Bourse
		11-Dec	<i>Fenwick Stamp & Coin Show</i>	Renton, WA	Bourse
Repetitive Events			<i>Rose City Stamp Fair (2nd Saturday OSS clubhouse)</i>	Portland, OR	Bourse
			<i>Collector's Corner (4th Saturday OSS clubhouse)</i>	Portland, OR	Bourse