

Federated Philatelist

Newsletter of the Northwest Federation of Stamp Clubs

No. 215, June 2016

Oregon Stamp Society Celebrates Centenary

— by Sheryll Ruecker, Oregon Stamp Society



Beginning. Back in 1916, a few Portland stamp collectors got together, calling themselves the Beaver Stamp Society. They held meetings in each others' homes. In 1927, the club became more formalized, and the name was changed to the Oregon Stamp Society (OSS). A slate of offices was appointed. The first president was Dr. Edward H. Hirstel (Fig. 1). He served as president until 1934.



Fig. 1. Dr. Edward H. Hirstel

First Stamp Shows. In 1932, OSS held its first annual stamp show. It joined the Northwest Federation of Stamp Clubs in 1937, and hosted its first Pacific International Philatelic Exhibition (PIPEX) in 1941.

This show was the 6th annual PIPEX. Labels in different colors were produced to commemorate the event (Fig. 2). By this time, OSS was already using a logo depicting Mount Hood.

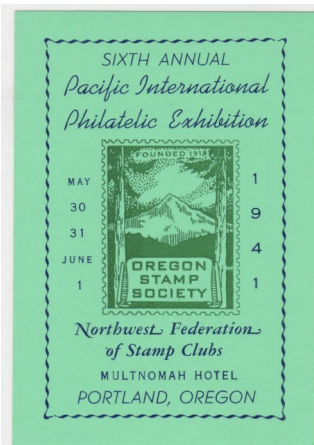


Fig. 2. 1941 PIPEX Label

After the U.S. entered World War II, stamp shows were not held again until 1947. The OSS sponsored a number of cacheted envelopes to commemorate events such as the Old Oregon Trail Centennial in 1943, the City of Portland Naming and Founding Centennial in 1945 and the Oregon Statehood centennial in 1959.

Clubhouse. By the 1960s, the OSS had made new exhibit frames and was looking for a

permanent place to store them along with the growing philatelic library. They had formed a committee to search for suitable premises to purchase. After finding out that three old fire stations were being sold, the club was successful in acquiring the one on NE 33rd Avenue (Fig. 3).



Fig. 3. Oregon Stamp Society Clubhouse ca. 1960

This was just in time for the 74th APS Philatelic Convention, held in Portland in July 1960. However, the clubhouse needed refurbishing and in the next few years members threw themselves into the task, with the initial help of the city's fire service.

— continued on page 3

Inside

OSS Centenary – Sheryll Ruecker	1
From the Editor's Desk	2
Chairman's Notes	3
SOPEX 2016 – Nancy Swan	4
News Items	5, 14
Youth in Philately – Lisa D. Foster	6
APEX 2016 – Eric Knapp	7
Colfax, Washington – Jack R. Congrove	8
New Federation Members – Jack R. Congrove	10
2016 Arn Symposium – Jack R. Congrove	11
Club Activities	12
Philatelic Puzzle	15
Stamp Show Calendar	16

Editor

JACK R. CONGROVE
P.O. Box 33092
Fort Lewis, WA 98433
253-564-0969
jackcongrove@comcast.net

Associate Editor

LISA D. FOSTER
fosteld@gmail.com

Northwest Federation of Stamp Clubs

<http://www.nwfedstamps.org>

Chairman of Board of Directors

LAWRENCE CLAY
P.O. Box 6228
Kennewick, WA 99336-0228
Phone: 509-735-3731
lclay3731@charter.net

Board of Directors

ERIC A. RANGER
New Westminster, British Columbia

DR. KEITH R. SPENCER
Edmonton, Alberta

ERIC HUMMEL
Portland, Oregon

Executive Secretary

Vacant

Treasurer

ALEX HADDEN
#19 – 7651 Francis Road
Richmond, B.C. V6Y1A3
Phone: 604-272-2614
alex-hadden@shaw.ca

Judging Chairman

DICKSON PRESTON
Seattle, Washington

History Chairman

LEONARD LUKENS
Phoenix, Oregon
lenlukens2@gmail.com

Webmaster

DAVID HARRIS
Medical Lake, Washington
sqpiano@gmail.com



One of the good things about being the editor of a journal or newsletter is that you have the space and the freedom to express your views about any topic of your choosing. In this column I want to address **why we organize stamp shows**.

As most of you know and the Chairman points out in his column, one of our major Northwest shows, PIPEX, is not being held this year. But as you will find in this edition, there have been other shows held in Alaska, Oregon, British Columbia, and Alberta thus far this year and more are in the planning stages in Washington, Oregon, and Canada.

As a member of both the Seattle Philatelic Exhibition Board and the Board of the American Topical Association, both organizations that conduct World Series of Philately exhibitions, I know that putting on such an event is neither simple nor easy.

It is a year-round effort that requires a lot of hard work, planning, coordination, and expense. So why do organizations put themselves through all this trouble?

I think I can speak for many of those involved that the reason amounts to the desire to promote stamp collecting as a terrific and enjoyable activity.

These shows encourage stamp collecting and exhibiting and provide the opportunity to put collectors in touch with dealers. They also offer a venue for meetings, presentations, and social gatherings to enable collectors to interact with others who share their interests.

It is a rare case where a collector has not benefited from his or her attendance at one of these shows. You can pay back a little of the benefits you have obtained by volunteering your help at one of these events. The show organizers are always looking for volunteers to help with organizing, setting up, and maintaining the show.

Visit the websites or the sponsoring organizations, or contact the leaders to see how you can help.

Keep the email coming about any activities or happenings involving your clubs or other groups so I can report the news to others.

Newsletter editors, please add me to your distribution for the same reason.

Also, please look at your collection and send me a couple paragraphs describing an item you find interesting. Club officers, send me news about your club's activities and accomplishments. I will publish this information in upcoming editions. **Input for the next edition is due to me not later than 15 August 2016.**

— Jack R. Congrove, Editor

Answers to Philatelic Puzzle: 1-D, 2-E, 3-H, 4-I, 5-J, 6-B or G, 7-B or G, 8-A, 9-F, 10-C

OSS Centenary (from page 1)

Membership dues were charged and an initiation fee was added to membership dues of new members to help pay off the new clubhouse. It was also rented out to similar groups. The extra income helped to pay off the loan from the city in less than ten years. A mortgage burning ceremony was held at the 1969 Christmas party.

Activities. In the 1940s, the club began a lucrative sales operation of circuit books, offering them to other clubs as well as its own members. This continued until 1992, when local dealer bid boards, the monthly Rose City Stamp Fair, and the newly implemented monthly Stamp Collectors Corner caused sales to decline.



In January 1980, the OSS began using its own perfin design (Fig. 4) on mailings of its newsletter, *The Album Page*, a practice that continues to this day. *The Album Page* has won high awards in past years in the APS StampShow literature exhibition.

Fig. 4. Perfin In 1990, the first OSS annual auction was held to raise funds for clubhouse maintenance. This activity has become increasingly popular.

The first Metro local show was held in 1987, and was effective in encouraging members to exhibit. The show was held usually annually up until 2006.

Library Expansion. The library, which is situated in the clubhouse basement, was named the Harold Petersen Philatelic Library in 1985, in recognition of the work he had done over many years to keep it in order and acquire new books and periodicals.

In 2003, it became its own entity as a non-profit organization, and was renamed the Northwest Philatelic Library, Inc. (NPL). Its online catalog is linked with those of other philatelic libraries throughout the country.



Fig. 5. PIPEX Award

PIPEX. Beginning in 2010, some OSS members undertook to ensure that PIPEX (Fig. 5) remained a viable WSP show. It now has its own organization and is held each May in Portland, except for this year due to the international show in New York and the APS StampShow 2016 being held in Portland in August.

With the creation in 2014 of the OSS foundation as a non-profit 501(c)(3) organization, stamp collecting is now even further promoted in the community. Stamp collectors will have the opportunity of attending educational seminars tailored to their interests.

— continued on page 9

Chairman's Notes

This year is unusual with no PIPEX show on the schedule. Normally, as I write this, Portland Philatelic Exhibitions (PPE) and the NWFSC are putting together the last minute details for PIPEX to be held on Mother's Day weekend.

PIPEX is a World Series of Philately (WSP) show and many top exhibitors from around the nation send in their exhibits in hopes of winning the Grand Award and qualifying for the Champion of Champions exhibition at the annual American Philatelic Society (APS) summer show.

As almost everyone knows by now, PIPEX received a bye from the APS this year due to two major shows causing a conflict. World Stamp Show-NY 2016, the international stamp show in New York City, is scheduled for 28 May–4 June 2016. Then the APS summer show is slated for Portland, Oregon on 4–7 August 2016.

It was felt that it would be difficult to maintain the type of dealer and customer support that has been given to past PIPEX shows.

So, if you cannot go to New York City, it is hoped that you will give your full support to the APS show in Portland. This promises to be a once-in-a-decade top show in our area with Grand Award winning exhibits and an outstanding group of dealers from all over the United States.

The NWFSC normally holds its **annual general meeting** at PIPEX. This year, the APS has graciously given us a room and time on the schedule for our AGM. The AGM is scheduled for 9:00 AM, Saturday, 6 August. All NWFSC representatives and members of the NWFSC clubs are invited to the meeting.

Going back to PIPEX, the NWFSC and the PPE have signed an agreement for future PIPEX shows to be held on Mother's Day weekends in 2017, 2018, and 2019. PPE has agreed to pay NWFSC a license fee of \$1,250 for each year for the rights to the name PIPEX. We look forward to continuing the tradition of holding outstanding PIPEX shows here in the Pacific Northwest.

— Lawrence Clay, Chairman

SOPEX 2016

— by Nancy Swan, *Southern Oregon Philatelic Society*

SOPEX 2016, the Southern Oregon Philatelic Society's 54th annual show and bourse is over! The participation by our members again was great—at least 30 members plus four spouses helped at the show. This included set-up and tear down, exhibiting, chairing a committee, providing security, working with youth, making coffee, helping a dealer, and providing hospitality.

That is what makes a show—members cooperating and enjoying each other. We also signed up new members.

There were Northwest Federation member exhibits from five clubs: Anchorage to Medford. The Northwest Federation Thunderbird Medal was awarded to the gold ribbon exhibit of Nick Follansbee, "India Refugee Relief, 1971–1973, the press overprinted stamps." Nick also won the Smith Memorial Trophy for best foreign exhibit by a club member.

Among the highlights of SOPEX 2016 were 52 frames of exhibits. The judges, Tim Bartshe and Tony Wawrukiewicz, worked way past their lunch time assessing exhibits.



SOPEX Cachet Designer Evelyn Bryan



SOPEX Awards Dinner

L to R: Tony Wawrukiewicz, Candace Weissinger, Tim Bartshe, and John Hart—Show Chair

This show marked the 52nd year that Evelyn Bryan has prepared and sold our cachet covers.

Students from St. Mary's School in Medford helped set up the tables and chairs, carried dealer boxes, and manned the Youth Table (and ate lots of donuts and pizza).

The Chamber of Commerce Pear Blossom Committee were excited over Len Lukens's Jackson County postal history entry.

Rich Moyer, David Brumbach, and Shane Loveland stayed overnight to provide security for the show.



Students at the Youth Table

The SOPS also created a memorial exhibit honoring Barbara Herbert who passed away in early March.

The Popular Choice Pear Trophy was won by Candace Weissinger with her exhibit, "How did early Americans Spell Relief – the Outhouse!"

There were some disappointments: No youth exhibits and surprisingly no topical/thematic or display exhibits.

The Grand Award winner was Daryl Reiber for "Ethiopia: From Postal Concession to Entry into the UPU."

Lisa Foster won the President's Award and a Gold ribbon for "Invalid Postage Use."

Larry Crain won Gold and the Carley Cup for the best US exhibit by a club member for "PNCs and 1st Class Mail."

Leonard Lukens won a Vermeil ribbon and the Patterson Trophy for the best postal history exhibit by a club member for "Crater Lake."

Eric Knapp won a Vermeil ribbon and the Americana Award for "Homefront Alaska."

Mike Randall received a Bronze ribbon and the Novice Award for "U.S. Internal Revenue."

Other Gold ribbons were awarded to Vesma Ginfelds, Ralph Nafziger, and Bill Tatham.

A Vermeil ribbon went to Joe Ross. Silver ribbons were awarded to Jack Congrove, Bradley Fritts, Bob Grosch, Anne Harris, Nancy Swan, and Mark Woodward.

Bronze ribbons were awarded to Larry Crain, Shane Loveland, and Ray Teys.

SOPEX 2017 will be held 8-9 April 2017, in conjunction with the Pear Blossom Festival at the Padgham Pavilion of EXPO in Central Point, Oregon.

Tri-Cities Stamp Club

The Tri Cities Stamp Club meets on the fourth Wednesday each month at the Charbonneau Retirement Complex in Richland, Washington. Meetings start at 7:00 PM with a short business meeting and then a program. Meetings are on the third Wednesday in November and December. Everyone is welcome. Annual dues are \$10.

Upcoming programs include a presentation on Interrupted Air Mail on 25 May, philatelic grab bag on 22 June, a joint meeting in Ritzville on 29 July, and annual picnic on 24 August.

Dan Hurting has taken over as editor of their newsletter, *The Triangle*. Corless Clay retired after 20+ years serving as the editor. The newsletter is also available by email.

The club will host their annual stamp show at the M Hotel and Conference Center in Richland on 1-2 October. Show hours are 10-5 on Saturday and 10-3 on Sunday. They expect more than ten dealers to be on hand. They will offer a show cover and pictorial postmark.

For more information about the Tri Cities Stamp Club, contact Bill Ailes at billailles3@charter.net.

Exhibits Requested

The **Evergreen Stamp Club** will hold their summer stamp exhibition on 16-17 July at the Kent Commons Recreation Center, 525 4th Avenue in Kent, Washington.

The club is currently seeking individual exhibits, club showcase exhibits and collections to be displayed at the exhibition. This is a great opportunity to make your first attempt at exhibiting. It is **free** to enter!

There will be ribbons and awards from the APS, ATA, AAPE, WE, and societies. The entry form and prospectus is available from the club website: <http://stamps.org/Evergreen-Stamp-Club>.

Contact the exhibit chair, Lisa Foster, with any questions at fosteld@gmail.com. Enter today!

SEAPEX 2016, a WSP show, is seeking exhibits for its 9-11 September exhibition. They are especially interested in encouraging novice and youth exhibitors to experience exhibiting at the national level. Entry forms and prospectus are available at their website: <http://seapexshow.org>. Entries are **due by 22 July**.

UPCOMING SHOWS

Evergreen Summer Show

July 16-17

Kent Commons, Kent, WA

Strait Stamp Show

July 30

Sequim Masonic Lodge, Sequim, WA

APS StampShow

August 4-7

Oregon Convention Center, Portland, OR

SEAPEX

September 9-11

Tukwila Community Center, Tukwila, WA

VANPEX

September 23-24

W. Burnaby United Church, Burnaby, BC

VICPEX

October 1-2

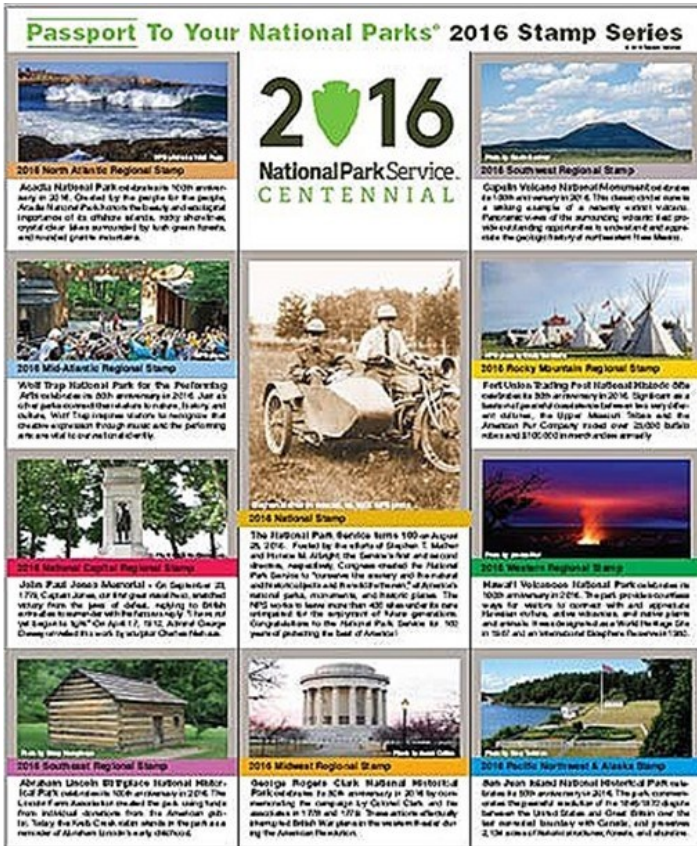
Comfort Inn, Victoria, BC

Youth in Philately

— by Lisa D. Foster, Associate Editor

As summer approaches and vacation plans are beginning, consider visiting one of the many National Parks in celebration of the 100th year of the National Park Service.

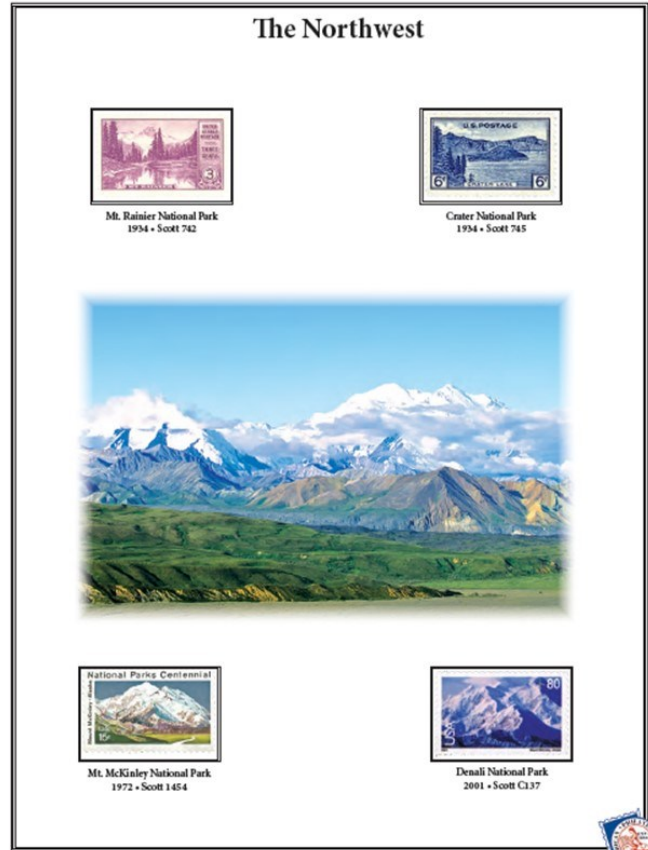
The National Park Service (NPS) offers a fun activity to add to your visitor experience. You can purchase a National Park Passport (<http://eparks.com/store/>) and then visit cancellation stations throughout the Pacific Northwest to cancel the corresponding page in the passport to record your visit. For a complete list of all stamp cancellation locations go to: <http://eparks.com/store/content/863/Passport-Cancellation-Locations/>.



The NPS issues a set of collectible park stamps each year

Start a stamp collection of US stamps that feature national parks. Print out the American Philatelic Society's 2010 National Parks Stamp Album at http://stamps.org/userfiles/file/albums/National_Parks.pdf to begin. It includes pictures of stamps previously issued and historical information about the parks themselves.

This year the U.S. Postal Service is issuing 16 new Forever stamps featuring national parks! If you and your youth are unable to attend the first-day ceremony at the World Stamp Show-NY 2016, consider attending a ceremony



Northwest Page from the APS National Parks Album

taking place at or near any of 16 featured parks on 2 June 2016. **Ten of them are in the western US.**

These parks are: Arches (Utah), Bandelier N.M. (New Mexico), Carlsbad Caverns (New Mexico), Glacier Bay (Alaska), Grand Canyon (Arizona), Haleakala (Hawaii), Mount Rainier (Washington), San Francisco Maritime (California), Theodore Roosevelt (North Dakota), and Yellowstone (Wyoming).

Or consider a mail order request no later than 30 days after the issue date. Check out the USPS Pictorial Postmarks Announcement for information and updates on release dates of park related postmarks (http://about.usps.com/postal-bulletin/2016/pb22439/html/info_009.htm).

You can purchase postcards as you visit parks, write about your activities, affix the centennial park stamps and mail them to yourself from the park for a scrapbook or to create a fun exhibit.

I would be thrilled to share pages from your summer National Park adventure or stamp collection in September at SEAPEX 2016.

APEX 2016

— by Eric Knapp, Anchorage Philatelic Society

On a not so wintery weekend in March, the same weekend the Iditarod Trail Sled Dog Race began, the Anchorage Philatelic Society held its 2016 Alaska Philatelic Exhibition. The show is now in its 64th year and predates statehood by seven years. It is the oldest continuous stamp show in the state of Alaska.

The show was held at the Anchorage Senior Activity Center 4–6 March. This was its third year in the new space and we are getting it figured out. We had some difficulties and challenges, but despite it all, the show went very well.

The theme of APEX was “The Cold War in the Frozen North.” Our cover featured an aerial photo of the Nike Missile Base Site Summit. The base sits on a mountaintop just northeast of Anchorage.



The Cold War in the Frozen North 64th APEX March 4-6, 2016

APEX 2016 Souvenir Cover

Site Summit was operational from 1959 to 1979. It was one of three Nike Missile bases in the Anchorage area and the only one that still has significant buildings intact.

The historical group, “The Friends of Nike Site Summit,” were at the show and presented information about the site and the efforts to preserve it and open it to wider visits.

Traffic at the show was great on Friday, slower on Saturday, and slower still on Sunday. This has been the norm for the last few years.

The exhibits were great, but there were not enough of them. We will work on growing more exhibitors in the club, finding exhibitors from other places, and getting the word out earlier for the next show. We use a nine-page frame, so the show is a good place for what would be a single frame at a bigger show.

Stan Grove won the Grand Award and Best Postal History Award for “Workhorse of the 1860s: The 3c Washington Stamp.” Stan also won the Reserve Grand Award for “Solo Usages of the 4th Bureau Issue.”



Judy Ireton with APEX Exhibits

Judy Ireton won the Best Topical Award for “An Inflation Era Tale: Covers from China 1948–1949.”

APEX has a very active youth exhibitor program. This year we had exhibits from ten youth exhibitors. Trace West won a Gold medal and the Best in Show award for “Wild Cats.”

The bourse was good. We used the same basic layout as last year with a few tweaks. It seems to be working. Thanks to Lou Carufel for bringing his material.

Thanks to everyone who participated in any way. We look forward to seeing you next year.



Judy Ireton with Youth Exhibitors

Colfax, Washington



Natural Rock Formations – Colfax, Washington
(divided back, tinted collotype, Sprouse & Son, Tacoma, ca. 1910)



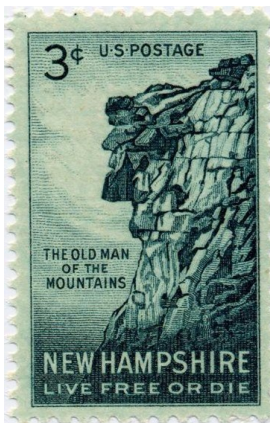
McKinley Rock
“On a Summer Tour in Eastern Washington,”
The Coast, Vol. VIII, No. 5, p.164, 1904
photo by A.E. King

— by Jack R. Congrove, *Evergreen Stamp Club*

I found the un-mailed postcard pictured above at a recent local show. The unusual natural rock formations intrigued me. So I acquired the card to find out more about them.

The human mind seems to be wired to notice patterns in natural formations. This is a psychological phenomenon called **pareidolia**. It involves a stimulus (usually an image or sound) wherein the mind perceives a familiar pattern of something where none actually exists.

A common example is a perceived image of an animal in a cloud formation. A more pertinent example in this case is the famous “Face on Mars, which of course at high resolution turned out to be nothing more than a rock formation.



Old Man Formation
USA, 1955, Sc#1068

The only information I was able to find about the McKinley Rock was in an article in a 1904 edition of *The Coast* magazine. There is no indication of its actual location, nor whether the formation still exists.

The Martha Washington Rock was located on a bluff west of Highway 195, across from Jennings Elementary School in Colfax, Washington. The rock fell around 1914 or 1915.

According to an anonymous author, “The big rock was named

Martha Washington Rock because it had the shape of Martha Washington’s profile.” I am not going to touch that.

Colfax is the county seat of Whitman County. According to the 2010 census, it had a population of 2,805, which makes it 25th in population size out of 39 county seats.

Whitman County is notable for its agricultural production. County-wise, it ranks first in the entire country in the productions of edible dry peas, barley, and lentils, and second in the country in wheat production.

The town sits at the confluence of the north and south forks of the Palouse River. By the early 1900s, it also lay at the junction of three major railway lines. It was incorporated on 29 November 1873, and named in honor of then-Vice President Schuyler Colfax.

The Colfax post office opened in February 1872, with Anderson Cox (15 March) serving as first postmaster quickly followed by Marvin A. Belcher (5 April).

The current post office building was built in 1932, and listed on the National Register of Historic Places in 1991.

The town was nearly destroyed by floods in the 1880s and early 1900s. A U.S. Army Corps of Engineers flood control project in 1963 has eliminated most of this problem.

OSS Centenary (from page 3)

Pay a Visit. Visit the OSS when you are in Portland. Club activities are many and varied, with two meetings per month, an annual auction, the Rose City and Collectors Corner monthly bourses, and the PIPEX annual WSP stamp show. The stability of having its own clubhouse and library promotes a vibrant philatelic community.

The OSS website at <http://www.oregonstampsociety.org/> has a calendar of upcoming meeting topics (on second and fourth Tuesday evenings), membership forms, the latest club activities, and much more. See you there!

Save the Dates - OSS Celebrations

Collins Gallery Stamp Exhibition, Multnomah County Library, Portland. Saturday, 9 July–Sunday, 21 August.

Special exhibition titled, *Stamps: Pathways to Our World*. Each stamp gives us an insight into a country's history, geography, and culture. At the same time, we can also gain an appreciation of it intrinsically, as a work of art.

The wide range of exhibits include Oregon lighthouses, charity seals in Oregon, the USS *Leviathan* ship-to-shore and shore-to-ship airmail pickup and delivery, German and Austrian post-WWI inflation period, perforation gauges, and a ukulele exhibit complete with a real ukulele!

Also included is a display commemorating the 100th anniversary of the OSS, a display showcasing Oregon, and a display promoting APS StampShow 2016.

The library is in downtown Portland on the MAX route at 801 SW 10th Avenue. The Collins Gallery is on the third floor (take elevator).

Oregon Stamp Society Clubhouse Open Day, 4828 NE 33rd Ave, Portland. Saturday, 16 July.

Special celebrations planned for this day include burying a time capsule, lunch, cutting the 100th anniversary cake, and a group photo of members wearing their 100th anniversary t-shirts. Exhibits by members and displays of Oregon Stamp Society history will also be present.

Oregon Stamp Society Evening Reception, Multnomah County Library, Portland. Wednesday, 3 August, 6:00 PM.

Coming to Portland for APS StampShow 2016? Consider attending the OSS evening reception at the Collins Gallery on Wednesday evening before the show. This will also be an opportunity to meet with other out-of-town visitors, as well as OSS members. Attendance is free and light refreshments will be provided.

Oregon Stamp Society Clubhouse Open Days, 4828 NE 33rd Ave, Portland. Friday–Sunday, 5–7 August.

While at the APS StampShow 2016, you are welcome to visit the OSS clubhouse. Tours of the clubhouse and library will be available, and there will be exhibits by OSS members as well as displays of OSS's first 100 years.

OSS Booth at Fremont Fest, NE Fremont Avenue, between NE 41st and 48th, Portland. Saturday, 6 August, 10 AM to 5 PM.

If you are taking a break from APS StampShow 2016 on Saturday, visit the 30th annual Fremont Fest. The day opens with the lively Kid's Bike & Pet Parade at 10 AM led by a Portland fire truck and a marching band, and followed by vintage cars. There will be live music, food, street vendors, entertainment, and attractions for children and adults, including the Oregon Stamp Society booth.

This is also a unique way to experience Portland for those whose other halves will be spending all their time at the show.

Want to know more about the OSS centennial activities? Visit their website at <http://www.oregonstampsociety.org/>

Want to pre-register (it's free) for APS StampShow 2016 or buy tickets to the Awards Banquet? These services and much more are on the APS StampShow 2016 website at <http://stamps.org/stampshow-ss>.

Boeing Exhibit

SEAPEX 2016 will celebrate the 100th anniversary of Boeing aircraft as its show theme. The show has partnered with The Boeing Company to provide a philatelic exhibit for display in the centennial room at the Boeing Museum of Flight throughout the summer.

The exhibit includes selections of worldwide stamps depicting Boeing products as well as many maiden flight and first flight covers, many autographed by the crews.

The museum is located on the east side of Boeing Field at 9404 E. Marginal Way South in Seattle and is open seven days a week, 10 AM to 5 PM. www.museumofflight.org.

Boeing has some amazing celebrations planned to commemorate their anniversary including a documentary film, traveling exhibits, and a special light show including one of almost every model of their historic aircraft.

SEAPEX will offer a special museum tour the day before the show on Thursday, 8 September.

New Federation Members

— by Jack R. Congrove, Northwest Federation

The Northwest Federation of Stamp Clubs is experiencing a wave of growth. Since the publication of the last newsletter, we have gained not one, not two, but **three** new member organizations.

I sometimes hear other collectors bemoan the declining state of the hobby, but when I look around, I see plenty of reasons to be optimistic and this is one of them.

By the time you have this edition of the newsletter, one of the largest international stamp shows in the world will be in full swing in New York City. Yours truly intends to be there each day, and looking at my schedule, I will have little time for sightseeing side trips because there is so much to see and do at the show itself.

Here in The Great Northwest we have two World Series of Philately shows to look forward to: The APS StampShow in Portland on 4–7 August, and SEAPEX in Tukwila on 9–11 September.

Our first new member is the **Central Oregon Postal Collective** based in Redmond, Oregon. It is open to all collectors from the Central Oregon region and has members from Madras, Prineville, Powell Butte, Redmond, Bend, and Sunriver. They accept donations in lieu of dues.

Meetings are held at 10:00 AM on the first Saturday of each month (except July) at the Redmond Karate Studio in Redmond and involve a mix of sharing collecting experiences and exchange and sales of materials.

The club President and founder is Robert Hood whose interests include postage from Israel. Steve Bucknum is the club secretary. Recently, he became the “auctioneer” for the silent auctions that the club has started.

Jim Busse is the club liaison to the Northwest Federation. He has an interest in German postage and is a recognized expert in Russian occupation overprints.

The second new member is the **Portland Philatelic Exhibitions**. The PPE is a 501(c)(3) non-profit organization that, under the aegis of the NWFSC, organizes and conducts the annual Pacific International Philatelic Exhibition (PIPEX)—a World Series of Philately stamp exhibition.

The PPE has produced the PIPEX show since 2012. The President is Anthony S. Wawrukiewicz and the Vice President is Lucien Klein. There are 12 other Board members.

PIPEX presently takes place each year on the weekend of Mother’s Day, at the Red Lion Hotel on the River at Jansen Beach. The hotel provides an excellent venue.

Each year there are two or three convening societies that attend PIPEX and support it. As a WSP show, there are at least 240 frames of exhibits that are shown there. Also, there are 38 to 40 dealers that support the show.

All persons are invited to attend the show and admission is free. Volunteers, especially the members of the NWFSC, are most welcome.

Because the American Philatelic Society’s annual major show, StampShow, will be held in Portland in August, PIPEX will be taking a hiatus in 2016. However, the show will return on Mother’s Day weekend in 2017, on 12–14 May. See you there!

A great deal more information about past and future PIPEX shows and volunteer opportunities is available at the PIPEX website: www.pipexstampshow.org.

Our third new member is the **Alaska Collectors’ Club**. It is an international society with members in North America, Europe, and Asia. It is dedicated to developing a wider interest in the study and preservation of Alaska’s Postal History. Founded in 1959, the same year Alaska became a state, it has continued, with two brief hiatuses, since then.

Annual dues are \$15 for US members and \$20 elsewhere. Membership information may be obtained from the Secretary Treasurer, Eric Knapp, 4201 Folker St, #C102, Anchorage, AK 99508 (eknapp@gci.net).

The club meets infrequently at major stamp shows. There is an active email correspondence among members. The club publishes a quarterly journal, *The Alaskan Philatelist*.

The President is Michael Senta from Alaska. The Vice President and Editor of the journal is Angela Watson from California.

The club will be at the APS StampShow 2016 in Portland, with a table and an informal gathering.

Northwest Federation on Facebook

Follow us on Facebook and see what is happening in the local philatelic world (*Northwest Federation of Stamp Clubs*).

Edited by Bill Ailes, the Federation Facebook page includes posts about interesting philatelic events taking place in The Great Northwest and elsewhere.

Share your own posts to spread the word about events involving your organization, or other exciting philatelic news.

2016 Arn Symposium

— by Jack R. Congrove, Northwest Federation

The 26th annual John D. Arn Philatelic Symposium, sponsored by the Northwest Federation of Stamp Clubs, was held on Saturday, 9 April at the Best Western Motel and Conference Center in Moses Lake, Washington.

This year the symposium attracted about 40 philatelists from around the northwest to share thoughts and ideas on philately and establish fellowship amongst the clubs and collectors in the Pacific Northwest.

Four primary speakers and several others who gave brief presentations on various topics entertained the visitors.

Jim Hirstein from Florence, Montana, presented the history of pre-cancelled stamps and showed examples of the various types. David Oldfield, a Canadian expatriate from Post Falls, Idaho, presented some early covers that travelled between Canada and the United States and discussed the various rates involved.

Bill Ailes from Yakima, Washington, gave an informative and educational presentation about on-line resources for philatelic research and news.

David Snow from Portland, Oregon, showed some examples of covers carried by eastern independent mail companies that operated in competition with the U.S. Post Office

Department during the 1844–45 period, and explained the history behind these mails as described in a forthcoming book of which he is a co-author.



2016 Arn Symposium Guest Speakers
L to R: Jim Hirstein, David Oldfield, Bill Ailes, David Snow

The guests enjoyed a delicious luncheon during the event and a dinner buffet following the silent and live auctions.

The auctions had a wide variety of materials and there were more lots than usual this year. Howard Ness from the Inland Empire Philatelic Society served as auctioneer. Steve Recher and Lawrence Clay from the Tri-Cities Stamp Club handled the accounting for the auction.

The 2017 Symposium will be at the same venue on Saturday, 8 April 2017. Make plans to attend.

**Seattle
Philatelic Exhibition
SEAPEX 2016**

**an APS-accredited
NATIONAL Stamp Exhibition**

100th Anniversary



**Boeing Aircraft
Seattle**

**FREE PARKING
FREE ADMISSION**

**25+ Stamp Dealers
160+ Frames of Exhibits
USPS Postal Booth
Scout Merit Badge Seminar
Society Meetings & Seminars
Show Cachet and Cancellation
What's in Your Attic Evaluations
Free Stamps for Youth/Educators**

September 9–11, 2016
Fri. 10AM–6PM
Sat. 10AM–5PM
Sun. 10AM–4PM

**Tukwila Community Center
12424 42nd Avenue South
Tukwila, Washington**

<http://www.seapexshow.org>
Facebook: Seapex: Seattle Philatelic Exhibition



Club Activities

The **Alaska Collectors' Club** is one of our newest members (see p.10). They publish a quarterly journal, *The Alaskan Philatelist*. They meet infrequently at major stamp shows. They do not have a website. Annual dues are \$15 for US and \$20 elsewhere. Contact eknapp@gci.net.



The **American Air Mail Society—Northwest Chapter** has a new newsletter editor and has published two new editions the *Air Mail Northwest* newsletter. They will hold elections at the APS StampShow in Portland. The chapter has no website. Dues are \$8 per year.



The **Anchorage Philatelic Society** publishes *The Anchorage Philatelist* newsletter. The club held its annual APEX stamp show on 4–6 March (see p.7). They had many youth exhibits from local school children. Dues are \$10 per year, \$15 for families, and \$2 for youth. www.anchoragephilatelic.org.

The **Bellingham Stamp Club** has not produced a recent newsletter. They have joined with another club in Lynden and are meeting with them for an interim period.



The **British Columbia Philatelic Society** has not published a recent edition of their *BC Philatelic Newsletter*. Meetings are each Wednesday at 7:30 PM at West Burnaby United Church. The third Wednesday is auction night. Dues are \$20 per year for individuals, \$30 for families, and \$7.50 for students younger than 18. Website: www.bcphilatelic.org.



The **British North America Philatelic Society** (Pacific Northwest Regional Group) publishes the *West Coast Express*. In our area are the Calgary, Edmonton, and Pacific Northwest chapters. The PNW Chapter publishes the *British Columbia Postal History Newsletter*. BNAPS plans to have a booth at WSS-NY 2016. They held their annual meeting in Chilliwack, BC, 29 April–1 May. Dues are \$10 per year for all. See their website: <http://bnaps.org/regional.php>.

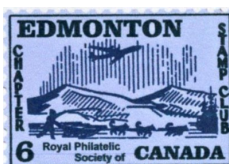
The **Central Oregon Postal Collective** is one of our newest members (see p.10). They do not publish a newsletter. They meet on the first Saturday at 10:00 AM at the Redmond Karate Studio. They accept donations in lieu of dues. Contact stbucknum@msn.com.

The **Collectors Club of Seattle** does not publish a newsletter. They hold an auction on the first Friday each month.



They have an extensive philatelic library. The club is open on the first Friday at 6:30 PM and on Tuesdays from 11:30 AM to 1:00 PM at the Maple Leaf Evangelical Church. Dues are \$20.

The **Eagle Stamp and Postcard Club** does not publish a newsletter. They held a quarter night in March exchanging items for a maximum of 25 cents. They hold auctions about four times per year. They meet on the first Tuesday each month at 7:00 PM at the Eagle Methodist Church. Website: <http://www.eaglestampandpostcardclub.com/>.



The **Edmonton Stamp Club** publishes a monthly newsletter, *Bulletin*. Each edition is full of interesting news and articles. They held their Spring National Show on 2–3 April. They meet on second and fourth Mondays at 6:30 PM at St. Joseph High School. Dues are \$30 per year for individuals, \$40 for families. There is a one-time \$5 fee for a name tag. See www.edmontonstampclub.com.

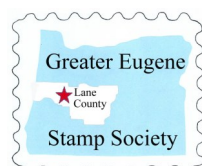


The **Evergreen Stamp Club** held their spring club show on 16–17 April with 22 dealers. Their summer show with 40+ frames of exhibits is scheduled for 16–17 July at Kent Commons. They meet on the third Wednesday each month at 7:00 PM at Kent Commons. Dues are \$20 per year. See <http://stamps.org/Evergreen-Stamp-Club>.

The **Garden City Stamp Club** does not publish a newsletter. They meet on the first Wednesday and third Monday each month at 7:00 PM at the Atonement Lutheran Church in Missoula. Annual dues are \$10. See their website at <http://gardencitystampclub.com/>.

The **Gastineau Philatelic Society** does not publish a newsletter. They meet on the third Thursday each month at 6:00 PM at various the Mendenhall Public Library.

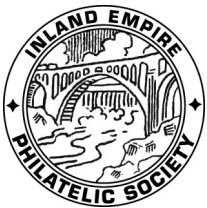
The **Greater Eastside Stamp Society** publishes the *GESS Newsletter*. They offer show and tell presentations at each meeting. They meet on the first and third Thursday each month at 7:00 PM at Unity Church of Bellevue.



The **Greater Eugene Stamp Society** publishes the *Echoes* bimonthly newsletter. It is running a series of articles on South Africa se-tenant stamps. They are planning their annual picnic. They meet on the second and fourth Wednesday each month at 7:00 PM at Saint Jude's Catholic Church. Dues

Club Activities (from page 12)

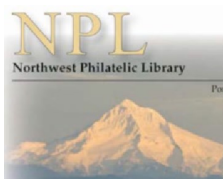
are \$15 per year, \$5 for youth under 18. They have a new website: <http://greatereugenestampclub.weebly.com/>.



The **Inland Empire Philatelic Society** publishes *The Lilac Hinge*. They held their Apple Blossom bourse on 2–3 April. They held a joint meeting with the Missoula Stamp Club on 7 May. They are planning a joint meeting with Tri-Cities in Ritzville on 30 July. They meet on the second and fourth Tuesday each month at 7:00 PM. Dues are \$10 per year for individuals, \$15 for families, and \$5 for youth under 18. Website: www.ieps-stamps.com.

The **Linn County Philatelic Society** does not publish a newsletter. They meet on the second Thursday each month at 7:00 PM at The Villas. See their website at www.albanystampclub.com.

The **North Shore Stamp Club** does not seem to have a newsletter or website. They meet every other Monday at 7:00 PM at Summerhill PARC retirement residence in North Vancouver, BC. Contact sandnworley@shaw.ca.



The **Northwest Philatelic Library** publishes a quarterly electronic newsletter, *Book Reports*. The Spring edition includes an article on the first and only US standard rate letter sheet. Several new publications have been added to the library collection. Dues are \$12 for those 18 and older, \$3 for under 18. See their website: <http://www.nwpl.org/>.

The **Okanagan Mainline Philatelic Association** publishes the *OMPA News*. They meet five times a year. In January, March, May, September, and November. Dues are \$10 per year, \$14 for Family, and \$2 for Junior (under 16).

The **Olympia Philatelic Society** does not publish a newsletter. They held their club show on 9 April in Chehalis. They meet at 7:30 PM on the second and fourth Monday each month at the Olympics West Retirement Inn. Dues are \$10 per year. See their website at <http://olympiaphilatelicociety.org/>.

The **Olympic Philatelic Society** does not publish a newsletter. They meet at 7:00 PM on the second and fourth Tuesday each month at the Silverdale Community Center.



The **Oregon Stamp Society** publishes a monthly newsletter, *The Album Page*. Each edition has an article on the featured cover of the month. The club is celebrating its 100th anniversary this year (see p.1). Meetings are on the sec-

ond and fourth Tuesday each month at their clubhouse. Dues are \$24 per year for regular members, \$16 for associate members who reside outside the area. Website: www.oregonstampsociety.org.

The **Pacific Northwest Postal History Society** publishes a quarterly journal, *The Oregon Country*, but no issue has been received recently. The society website is out of date and is being revised. Dues are \$20 per year.

The **Peace Arch Stamp Club** does not publish a newsletter. They meet at 5:30 PM on the first Wednesday of the month (except July and August). Dues are \$10 per year. See new website: www.peacearchstampclub.com/.

The **Portland Philatelic Exhibitions** group is one of our newest members (see p.10). They organize and conduct the PIPEX exhibition on behalf of the NWFSC. Membership is voluntary. Website: www.pipexstampshow.org.



The **Salem Stamp Society** publishes a monthly newsletter, *Willamette Stamp & Tongs*. The May edition has an article about perfins. They are preparing for participation in the World Beat

Festival 25–26 June. They meet on the second Wednesday each month at 6:00 PM at Fire Station District #1. Dues are \$10 per year for individuals, \$15 for couples, and \$20 for families. Website: www.salemstampsociety.org.



The **Sno-King Stamp Club** publishes a monthly newsletter, *Sno-King Stamp Club Philatelic News*.

The April edition contained an informative article on types of stamp paper. They held their annual stamp bourse on 6 March. The club meets in Everett on the second Wednesday and in Edmonds on the third Friday each month. Dues are \$10 per year, \$5 for youth under 18. <http://sno-kingstampclub.freehostia.com>.



The **Southern Oregon Philatelic Society** publishes a monthly newsletter, *The Philatelic Reminder*. They held their annual SOPEX show on 9–10 April (see p.4). The May meeting featured speaker Jim Kloetzel, Editor Emeritus of *Scott*

Catalogue. They meet the first Thursday at 7:00 PM at a new location at the First Methodist Church in Medford. They hold swaps at members' homes on the third Saturday afternoons. Dues are \$15 per year.

— continued on page 14

Club Activities *(from page 13)*



The **Strait Stamp Society** publishes a bi-monthly newsletter, *Strait Stamp Talk*. Their June meeting will feature Show & Tell using the letter “P” and a silent auction. They are planning for their club show on 30 July. They meet on the first Thursday each month at 6:00 PM at the Sequim Library. The club has no dues, but accepts donations. See their website at www.straitstamp.org.

The **Tri-Cities Stamp Club** publishes a monthly newsletter, *The Triangle*. They have a new editor (see p.5). They plan a joint meeting with the Inland Empire club in Ritzville on 29 July. They meet on the fourth Wednesday at 7:00 PM at the Charbonneau Activity Room. Dues are \$10 per year for adults, \$1 for students. Contact the club at billailles3@charter.net



USS Puget Sound Chapter 74 of the Universal Ship Cancellation Society does not have a chapter newsletter, but the Society publishes the monthly *USCS Log*. Annual dues are \$24 for US, \$45 international, and \$16 electronic delivery. See www.uscs.org.



The **Vancouver Island Philatelic Society** publishes a monthly newsletter, *The Guideline*. Meetings include a small auction. The club meets at 7:30 PM on the fourth Thursday each month at St. Aidan’s Church. Dues are \$20 per year. See www.vicstamps.com/vips.htm.



The **Washington State Philatelic Society** does not publish a newsletter. They meet on the second and fourth Thursday of each month at 7:00 PM at the Gethsemane Lutheran Church in Seattle.



The **Northwest Federation of Stamp Clubs** will hold its annual meeting at the APS StampShow in Portland, Oregon on 6 August 2016.

[*Ed. note: If you would like to have news about your club activities and upcoming plans published in future columns, please email either me (jackcongrove@comcast.net) or Lisa Foster (fosteld@gmail.com) with the details.*]

NWFSC Awards

The Northwest Federation of Stamp Clubs sponsors three different types of awards: the Northwest Distinguished Philatelist Award, the Federation Meritorious Service Award, and the Member Club Service Award.

The NWFSC plans on presenting these awards in 2016, even though there is no PIPEX show, assuming that qualified people are nominated. Tentative plans are to announce the awards at the annual general meeting on 6 August in Portland at the APS StampShow 2016.

The **Northwest Distinguished Philatelist Award** may be presented to a philatelist from the Pacific Northwest (Alaska, Alberta, British Columbia, Idaho, Montana, Oregon, and Washington) who has distinguished himself/herself as an exhibitor, judge, leader, or researcher both locally and on the national level in philatelic articles, publications, and organizations. The recipient does not have to be a member of a Federation member club.

The **Federation Member Service Award** may be given to a person who has rendered outstanding service to the Federation over a period of time.

The **Member Club Service Award** allows Federation member clubs to recognize someone in their club who has rendered outstanding service to the club on a long time basis.

Nominations for 2016 awards should be submitted to Lawrence Clay by **15 June 2016**. P.O. Box 6228, Kennewick, WA 99336, or email : lclay3731@charter.net.

APS StampShow 2016

August 4–7

Oregon Convention Center

130th Annual Convention

Thurs 11AM*–6PM

Fri-Sat 10AM–6PM

Sun 10AM–4PM

***NEW:** Only APS Members who preregister can access the show floor at 10AM, one hour before the show opens to the public.

GIFT: All who preregister will receive a free gift.

DoubleTree by Hilton Portland

1000 NE Multnomah St

\$147 (single/double) +tax (14.5% tax, fees, etc.)

Block cut-off date: 6 July 2016

150 dealers, live auctions, literature & philatelic exhibits, 100+ meetings & seminars

Philatelic Puzzle

On Thursday, 2 June at World Stamp Show-NY 2016, the US Postal Service will issue a set of 16 stamps honoring the 100th anniversary of the National Park Service. Ten of these feature places in the western United States. Try to match them.

- ___ 1. This feature is also a National Historic Landmark and on the National Register of Historic places.
- ___ 2. At dusk here you will be treated to a whirlwind of flying mammals.
- ___ 3. Contains more endangered species than any other national park in the U.S.
- ___ 4. This area was closed during WWII because of work on a secret weapon project.
- ___ 5. There are no roads at all leading to this park.
- ___ 6. This feature is on both the state license plate and a stamp commemorating the state's centennial.
- ___ 7. This feature is on both the state license plate and a stamp commemorating the state's centennial.
- ___ 8. The first national park in the world.
- ___ 9. This feature is one of the Seven Natural Wonders of the World.
- ___ 10. This park has three geographically separate areas.

(Answers on page 2.)



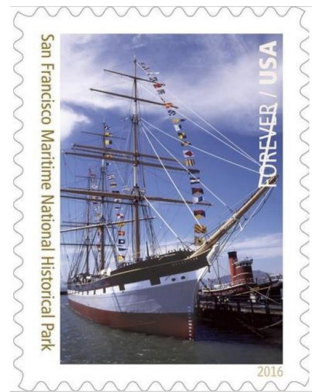
A



B



C



D



E



F



G



H



I



J

UPCOMING STAMP SHOWS / BOURSES

SHOW DATES			Major events in bold / PNW events in <i>italic</i>	Revised: 6/5/2016	
FRI	SAT	SUN	SHOW NAME	LOCATION	TYPE
2016:			There is no PIPEX or NTSS scheduled for 2016		
28 May–4 June			World Stamp Show NY 2016	New York, NY	Intl Show
	28-May		<i>Coin & Stamp Fair (North Shore Numismatic Soc.)</i>	Burnaby, BC	Bourse
		5-Jun	<i>Victoria Stamp & Postcard Fair</i>	Victoria, BC	Bourse
		12-Jun	<i>Fenwick Stamp & Coin Show</i>	Renton, WA	Bourse
17-Jun	18-Jun		OKPEX (Oklahoma City Stamp Club) (WSP)	Midwest City, OK	Show
	25-Jun	26-Jun	<i>Greater Seattle Postcard & Paper Show</i>	Kent, WA	Bourse
9-Jul thru 21-Aug			<i>OSS Centenary Exhibition - Multnomah Library</i>	Portland, OR	Other
	16-Jul	17-Jul	<i>Summer Show (Evergreen Stamp Club)</i>	Kent, WA	Show
	16-Jul		<i>OSS Clubhouse Open Day</i>	Portland, OR	Other
	30-Jul		<i>Strait Stamp Show (Strait Stamp Society)</i>	Sequim, WA	Show
3-Aug			<i>OSS Centenary Reception - Multnomah Library</i>	Portland, OR	Other
5-Aug	6-Aug	7-Aug	APS StampShow (begins 4-Aug) (WSP)	Portland, OR	Show
		14-Aug	<i>Victoria Stamp & Postcard Fair</i>	Victoria, BC	Bourse
		14-Aug	<i>Fenwick Stamp & Coin Show</i>	Renton, WA	Bourse
19-Aug	20-Aug	21-Aug	Royal 2016 Royale	Kitchener, ON	Show
8-Sep			<i>SEAPEX Museum of Flight Tour</i>	Seattle, WA	Other
9-Sep	10-Sep	11-Sep	SEAPEX Seattle Philatelic Exhibition (WSP)	Tukwila, WA	Show
	17-Sep	18-Sep	<i>Coin & Stamp Fair (North Shore Numismatic Soc.)</i>	Burnaby, BC	Bourse
		18-Sep	<i>Fall STAMPEX (Salem Stamp Society)</i>	Salem, OR	Bourse
23-Sep	24-Sep		<i>VANPEX (British Columbia Philatelic Society)</i>	Vancouver, BC	Show
	24-Sep	25-Sep	<i>Inland Empire Philatelic Society Apple Harvest</i>	Spokane, WA	Bourse
30-Sep	1-Oct	2-Oct	BNAPEX (BNA Philatelic Society)	Frederickton, NB	Show
	1-Oct	2-Oct	<i>Tri-Cities Stamp Show (Tri-Cities Stamp Club)</i>	Richland, WA	Bourse
	1-Oct	2-Oct	<i>VICPEX (Vancouver Island Philatelic Society)</i>	Victoria, BC	Show
		9-Oct	<i>Fenwick Stamp & Coin Show</i>	Renton, WA	Bourse
	15-Oct	16-Oct	<i>CALTAPEX (Calgary Philatelic Society)</i>	Calgary, AB	Show
11-Nov	12-Nov	13-Nov	Filatelic Fiesta (San Jose Stamp Club) (WSP)	San Jose, CA	Show
18-Nov	19-Nov	20-Nov	CHICAGOPEX (Chicago Philatelic Society) (WSP)	Itasca, IL	Show
		20-Nov	<i>Victoria Stamp & Postcard Fair</i>	Victoria, BC	Bourse
	26-Nov		<i>Coin & Stamp Fair (North Shore Numismatic Soc.)</i>	Burnaby, BC	Bourse
2-Dec	3-Dec		<i>Vancouver Stamp Fair</i>	Vancouver, BC	Bourse
		11-Dec	<i>Fenwick Stamp & Coin Show</i>	Renton, WA	Bourse
2017:					
17-Feb	18-Feb	19-Feb	ARIPEX (Arizona Federation of Stamp Clubs) (WSP)	Mesa, AZ	Show
3-Mar	4-Mar	5-Mar	APS AmeriStamp Expo (WSP)	Reno, NV	Show
28-Apr	29-Apr	30-Apr	WESTPEX (WSP)	Burlingame, CA	Show
5-May	6-May	7-May	PIPEX Pacific Intl. Philatelic Exhibition (WSP)	Portland, OR	Show
4-Aug	5-Aug	6-Aug	APS StampShow (begins 3-Aug) (WSP)	Richmond, VA	Show
1-Sep	2-Sep	3-Sep	BNAPEX (BNA Philatelic Society)	Calgary, AB	Show
8-Sep	9-Sep	10-Sep	SEAPEX Seattle Philatelic Exhibition (WSP)	Tukwila, WA	Show
Repetitive Events			<i>Rose City Stamp Fair (2nd Saturday OSS clubhouse)</i>	Portland, OR	Bourse
			<i>Collector's Corner (4th Saturday OSS clubhouse)</i>	Portland, OR	Bourse