

Federated Philatelist

Journal of the Northwest Federation of Stamp Clubs

No. 217, December 2016

SEAPEX 2016 Report



— by Jack R. Congrove, Northwest Federation

The Seattle Philatelic Exhibition held its 2016 SEAPEX exhibition at the Tukwila Community Center in Tukwila, Washington, on the weekend of 9–11 September. The show offered 148 frames of competitive philatelic exhibits, 24 additional frames of non-competitive exhibits, and 28 dealers in its bourse. The theme of the show this year celebrated the 100th anniversary of Boeing Aircraft.

On Thursday, prior to the exhibition, SEAPEX organized a tour of the Boeing Museum of Flight. During this tour, the visitors had a unique opportunity to visit the Boeing archives and view selected items from their collection of air mail covers and flight memorabilia.



Wallace Craig, Jack Congrove, & Eric Knapp at archives

This was the second year that SEAPEX operated as a World Series of Philately (WSP) exhibition.

The multi-frame Grand Award winner from each of the 31 WSP shows is invited to compete at the annual APS Stamp Show for the Champion of Champions Award, the highest national level exhibiting honor available.

The one-frame Grand Award winner also gets to compete at the APS AmeriStamp Expo for the Single Frame Champion of Champions Award.

The multi-frame Grand Award winner this year was **Dr. Michael D. Dixon** of Portland for “British WWII Prisoner-of-War Air Mail Stationery.”

— continued on page 3

Inside

SEAPEX 2016 – Jack R. Congrove	1
Youth in Philately – Jack R. Congrove	4
27th Arn Symposium – David Harris.....	5
New Exhibitor Incentive – George Struble.....	6
APRL Grand Opening – Jack R. Congrove.....	7
Bay Horse, Montana – Anne B. Harris	8
OSS Centennial – Sheryll Ruecker	9
SEAPEX Award – Jack R. Congrove.....	11
News Items	13
Hollygram Air Mail – Jack R. Congrove	14
Club Activities	16
Inverted Jenny to Sell – Jack R. Congrove	18
Philatelic Quiz	19
Stamp Show Calendar	20

Editor

JACK R. CONGROVE
P.O. Box 33092
Fort Lewis, WA 98433
253-564-0969
jackcongrove@comcast.net

Northwest Federation of Stamp Clubs

<http://www.nwfedstamps.org>

Chairman of Board of Directors

LAWRENCE CLAY
P.O. Box 6228
Kennewick, WA 99336-0228
Phone: 509-735-3731
lclay3731@charter.net

Board of Directors

Vacant
Canada
Vacant
Canada

ERIC HUMMEL
Portland, Oregon

ERIC KNAPP
Anchorage, Alaska

Executive Secretary

Vacant

Treasurer

ALEX HADDEN
#19 – 7651 Francis Road
Richmond, B.C. V6Y1A3
Phone: 604-272-2614
alex-hadden@shaw.ca

Judging Chairman

DICKSON PRESTON
Seattle, Washington

History Chairman

Vacant

Webmaster

DAVID HARRIS
Medical Lake, Washington
sqpiano@gmail.com



This is the final edition of the journal for 2016. It reminds me that it is time to wish all of our clubs and their members a happy holiday season and a safe and prosperous new year.

It is also time to remind our clubs that their annual membership payments are due at the first of the year.

Most of our member clubs are making plans for holiday parties. See page 16 for a report of the various club activities.

I regret to announce that our former Associate Editor, Lisa D. Foster, has decided to resign that position in order to pursue other activities. On behalf of the Federation, I want to thank her for her excellent reporting on Youth activities and Exhibiting events and her other contributions.

In this issue, we have reports on several philatelic events including SEAPEX, the Oregon Stamp Society centennial celebration, and the opening of the new American Philatelic Research Library.

Most of our member clubs are preparing for their holiday parties. See the Club Activities information starting on page 16 for more information.

For the first time, I entered our journal in a philatelic literature exhibition. I am very pleased to announce that the publication received a Vermeil award. See the article on page 6.

Jim Siscel wrote to inform me of an error in the Philatelic Quiz in the last edition. It turns out that the islands of Attu and Kiska in the Aleutian Islands were not the only U.S. territories occupied by the Japanese during WWII. That distinction also belongs the island of Guam.

Keep the email coming about any activities or happenings involving your clubs or other groups so I can report the news to others.

Newsletter editors, please make sure I am on your distribution for the same reason.

Also, please look at your collection and send me a couple paragraphs describing an item you find interesting. Club officers, send me news about your club's activities and accomplishments. I will publish this information in upcoming editions. **Input for the next edition is due to me not later than 15 February 2017.** Send to: jackcongrove@comcast.net.

— Jack R. Congrove, Editor

Answers to Philatelic Quiz: 1-L, 2-J, 3-E, 4-B, 5-D, 6-G, 7-A, 8-C, 9-I, 10-H, 11-F, 12-K

SEAPEX 2016 *(from page 1)*

The one-frame Grand Award winner was **Robert Benninghoff** for “The e Watermark Definitive Coil Stamps of Ireland 1940 to 1970.” Benninghoff also received the Reserve Grand Award for “Irish Coil Stamps 1922 to 1940.”

The People’s Choice Award went to **Carl “Van” Jennings** for “Ancient Egypt: The Time of the Pharaohs.”

On Saturday, SEAPEX held a ceremony to celebrate the show theme of the 100th anniversary of Boeing Aircraft. Guest speaker Steve Ellis, a stamp collector and docent at the Museum of Flight, gave an interesting presentation on the mission of the museum along with some personal anecdotes on Boeing history and the artifacts in the museum.

Attendees celebrated with cake and refreshments.



On Saturday, the show hosted a seminar for 30 Boy Scouts to fulfill the requirements for achieving a stamp collecting merit badge.



Chapter meetings were held by several societies including Women Exhibitors, German Philatelic Group, American Helvetia Philatelic Society, and the Universal Ship Cancellation Society.

Next year, SEAPEX 2017 will be held at the same venue on the weekend of 8–10 September. The theme for the show will celebrate the 100th anniversary of Camp Lewis, now part of Joint Base Lewis-McChord.

As usual there will be free parking and free admission, plenty of dealers, and great exhibits. Add it to your calendars now.

Chairman’s Notes

We had a great Thanksgiving at my house—turkey and stuffing, mashed potatoes, green bean casserole, squash, and cranberries topped off with pumpkin pie. Since there were just three of us, we have had two full days of leftovers!

Now we are starting to look forward to that wonderful time that is Christmas season for most of us followed by the New Year’s celebration as we enter the new year of 2017. Best wishes to all of you for a great Christmas and holiday season. And may the New Year be a happy and blessed one as you pursue your philatelic interests.

PIPEX 2017 is back on the schedule for Mother’s Day weekend in May 2017. This show should once again be one of the top philatelic events of the year. So put it on your calendar and take part whether you are a dealer, beginning or advanced collector, or exhibitor. There will be something for everyone.

And while I am promoting philatelic events, please consider putting the 27th Annual John D. Arn Philatelic Symposium (see p.5) on your calendar. It will be held on 1 April 2017, at the Best Western Conference Center in Moses Lake, Washington. It includes four knowledgeable philatelic speakers, clothesline events, silent and regular auctions, and lunch and dinner.

I am looking forward to seeing many of you in 2017.

— *Lawrence Clay, Chairman*

APS AmeriStamp Expo

3–5 March 2017

Reno-Sparks Convention Center

4590 South Virginia Street
Reno, Nevada

Fri-Sat 10:00AM–6:00PM

Sun 10:00AM–4:00PM

Atlantis Casino Resort Spa
3800 South Virginia Street

Free Admission

Youth & Beginner Activities
~50 stamp dealers

Stamp and postal history exhibits

Free collection evaluations

US Postal Service booth

<http://stamps.org/AmeriStamp-Expo-ASE>

Youth in Philately

— by Jack R. Congrove, Editor

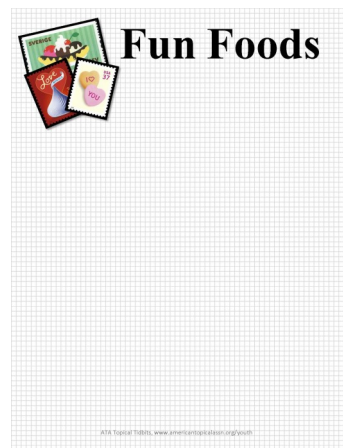
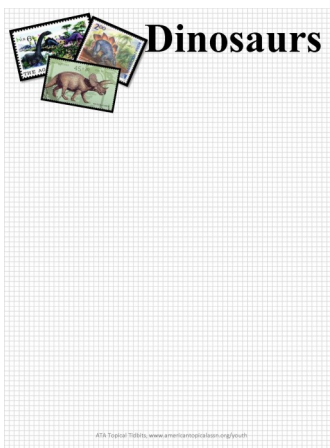
It is axiomatic in the philatelic world that we need to encourage stamp collecting among young people. Most stamp shows offer some activities to involve young visitors and several philatelic clubs and organizations provide resources to promote youth participation.

The **American Topical Association** is one such organization. In October, the ATA won second prize, which included a trophy, certificate, and €1,000 (~\$1,200), for its publications *Topical Time* and *Topical Tidbits* in the 4th CG International Philatelic Promotions Awards at the *Internationale Briefmarkenbörse* in Sindelfingen, Germany.

These awards are sponsored by the German Auktionshaus Christoph Gärtner GmbH & Co. KG to “promote youth philately and public relations.”

Topical Tidbits is periodic publication directed at a youth audience. Each edition features a specific topic of interest to philatelists with information, fun facts, games, puzzles, activities, and of course, loads of stamp images.

Current and past editions are available on the ATA website (<http://americantopicalassn.org/youth.shtml>). Also on the website you will find more than 400 templates of free topical album pages for youth collectors.



The website also includes an eight-page “**Introduction to Stamp Collecting**” booklet for youths that containing descriptions of stamp collecting tools, how to soak and hinge stamps, a glossary of terms, and a stamp identifier.

At the website, you will find links to other web pages devoted to collecting for kids.

The ATA offers its “**Taste of Topicals**” beginner’s stamp collecting packets for \$5 plus \$1 for postage. Each packet includes five topical album pages, ~30 stamps to match the page topic, stamp hinges, and various information to help one get started in topical collecting. Adult beginners often also enjoy Taste of Topicals packets themselves.



Topical Tidbits
Youth Philately Publication of the American Topical Association
October-December 2016 Volume 5 Issue 4
Editor/Creator: Aimée Devine French Translation: Alissa M Webel

France

Fun Facts:

- France is named after the Franks, one of the barbarian tribes who settled there from Germany in the 5th century A.D.
- France is the largest country in Western Europe and home to 64 million citizens.
- France shares a northern border with Luxembourg and Belgium. Germany, Switzerland and Italy are to the east. Spain is to the south across the Pyrenees Mountains.
- France is the world’s most popular tourist destination. There were 83 million foreign visitors in 2012.
- Bastille Day on July 14th celebrates the storming of the Bastille prison in 1789 during the French Revolution.
- French is the second most studied language (after English) and spoken by more than 300 million people around the world as their first or second language.
- The Tour de France is Europe’s top cycling event, covering about 2,000 miles and lasting up to three weeks. The leading cyclist wears a yellow jersey.
- The highest peak in Europe, Mont Blanc, is in the French Alps.
- The French flag is tricolor with three vertical bands colored blue, white, and red.
- During World War II, when Hitler visited Paris, the French cut the elevator cables on the Eiffel Tower so that he would have to climb the steps if he wanted to reach the top.

Faits Divers Amusants:

- La France porte ce nom à la suite de l’installation des Francs, l’une des tribus barbares venues de l’Allemagne au 5ème siècle après Jésus-Christ.
- La France est le plus grand pays d’Europe de l’Ouest, avec 64 millions d’habitants.
- La France partage une frontière avec le Luxembourg, la Belgique, l’Allemagne, la Suisse et l’Italie à l’est; avec l’Espagne au sud des Pyrénées.
- La France est la destination touristique la plus populaire du monde, avec 83 millions de visiteurs étrangers en 2012.
- Le 14 Juillet célèbre la prise de la prison de la Bastille en 1789 pendant la Révolution française.
- Le français est la deuxième langue la plus étudiée (après l’anglais) dans le monde et est parlée par plus de 300 millions de personnes comme première ou deuxième langue.
- Le Tour de France est l’événement cycliste le plus important d’Europe, parcourant environ 2.000 miles et durant jusqu’à trois semaines. Le cycliste en tête du classement porte un maillot jaune.
- Le sommet le plus haut d’Europe, le Mont Blanc, est dans les Alpes françaises.
- Le drapeau français est tricolore avec trois bandes verticales de couleur bleu, blanc et rouge.
- Lorsque Hitler a visité Paris pendant la Deuxième Guerre Mondiale, les Français ont coupé les câbles de l’ascenseur de la Tour Eiffel afin qu’il ait à gravir les marches pour atteindre le sommet.

The latest edition is devoted to **France** and includes a history quiz, artwork by French artists, a French travel bingo game, and album page templates for collecting.



Roundup Stamp & Coin Show
22 April 2017
Olympia Philatelic Society
Yardbirds Mall
2100 North National Avenue
Chehalis, Washington
Sat 9:30AM–4:00PM
Free Admission
Free stamps for kids
Northwest stamp & coin dealers
Stamp exhibits
US Postal Service booth
Refreshments
<http://olympiaphilatelicsociety.org/>

27th John D. Arn Moses Lake Symposium

— by David Harris, *Inland Empire Philatelic Society*

The first Moses Lake Philatelic Symposium took place in about 1991. John D. Arn, of the Inland Empire Philatelic Society in Spokane, set up the event at the Elks Club in Moses Lake, Washington. Eventually, the meeting moved to its present location at the **Best Western Lake Front Hotel and Conference Center** in Moses Lake.

John originally chose Moses Lake because of its central location to both eastern and western Washington and easy accessibility from the other northwestern states, Montana, Oregon, and Idaho, and the Canadian provinces of British Columbia and Alberta.

John was able to successfully set up and organize the meetings by himself until his health began to weaken late in the first decade of the 21st Century. Also at this time, the hotel was sold and the new owners were more attuned to business activities than the previous owners. Previously, there were no charges for the conference room, but the new owners had different ideas. John understandably decided it was time to give up on the symposium.

There were discussions throughout the Northwest Federation, but no conclusions were forthcoming. Until my wife, Anne, and I happened to be attending the Rocky Mountain Stamp Show in Denver and enjoying the hospitality of the Rocky Mountain Philatelic Library with wine and cheese in celebration of the Women's Exhibitors meeting there.

During a quiet moment, **Ruth Caswell** approached me and asked what we (notice the official "we") were going to do about Moses Lake. The end of the discussion led to the agreement that Ruth would take care of the speakers and I would do all the rest.

I approached the **Northwest Federation** at their annual meeting and asked that they pick up the tab for the cost of the conference room. The vote was overwhelmingly positive and without the support of the Federation, the symposium would not be possible.

About the same time, I decided to rename the symposium in honor of the gentleman that started it all and so now it is the John D. Arn Philatelic Symposium at Moses Lake, Washington.

Ruth retired at the end of the 2016 symposium and my wife Anne has picked up the responsibility of getting speakers for 2017 and future events.

At the Northwest Federation Annual General Meeting held during APS StampShow held in Portland in August 2016, the Federation members agreed again to pay for the Moses Lake conference room with help from income from the symposium itself, if possible.

We have a contract to hold the 2017 symposium at the Best Western Lake Front Hotel and Conference Center on Sat-

urday, **1 April 2017**. It will be an excellent gathering of collectors able to share friendships across many states and to enjoy presentations by local and national collectors as well as a chance to sell some of their treasures in the auctions to enhance their incomes.

Anne has lined up four exceptional speakers for our 2017 meeting: **Collyer Church** of the Puget Sound Collectors Club, **Larry Crain** from the Southern Oregon Philatelic Society, **Tony Wawrukiewicz** from the Oregon Stamp Society, and **Michael Zak** from the Garden City Stamp Club in Missoula, Montana.

In addition, the lunch and dinner menus have been corrected in the 2017 menus and I am working to break the bottleneck of the auction tallying operation by hopefully having everything on computers.

Prices for the lunch and dinner will remain the same as last year, but room prices have increased slightly. I would like to reduce the cost of the meals, but it is the only way we have to pay for the overhead (except the conference room cost).

The Moses Lake Symposium is the pride of stamp collecting in the Pacific Northwest. We have had speakers from as far east as Colorado and Missouri and as far south as California.

With both PIPEX and SEAPEX World Series of Philately shows, stamp collecting is alive and well in the Pacific Northwest and I certainly hope we continue to have an excellent turnout at the Moses Lake event.

If you want more information, or to be added to our mailing list, please contact me at sqpiano@gmail.com and keep an eye on the Northwest Federation website (www.nwfedstamps.org) for more information.

I will be sending out a letter of introduction to all on the Moses Lake mailing list about the middle of December and the program and registration forms will be in the mail around the middle of January.



2016 Arn Symposium attendees

Incentive for New Exhibitors

The Northwest Federation of Stamp Clubs has announced an incentive to encourage new exhibitors to enter their philatelic exhibits at PIPEX and SEAPEX, the two national-level World Series of Philately (WSP) shows in the Federation area.

The Federation will issue a \$20 rebate of the entry fee for adult exhibitors at these shows who have not previously exhibited in any WSP exhibition. To be eligible, the exhibitor must be a member of one of the stamp clubs or societies of the Northwest Federation. Up to ten rebates will be given in 2017.

In announcing this new initiative, Lawrence Clay, Chairman of the Northwest Federation, said, "Stamp shows normally have one or two new exhibitors a year. That is not enough. We need to develop new exhibitors, to maintain the strength of the hobby."

George Struble, Exhibits Chair of PIPEX, said, "There are several reasons for a stamp collector to exhibit. One is to show your friends what you do. Another is to help educate the public about your specialty. It provides a focus for your philatelic activity. But, the biggest benefit is that preparing an exhibit deepens your philatelic knowledge."

Jack Congrove, President of SEAPEX, said, "As the newest WSP show, we are grateful to the NW Federation for this opportunity. We have several special prizes for novice exhibitors that we are unable to award due to lack of candidates. This initiative will help new exhibitors and help our show."

In 2017, the PIPEX show will be held 12–14 May at the Red Lion on the River hotel in Portland. The SEAPEX show will be 8–10 September at the Tukwila Community Center in Tukwila, Washington.

Potential exhibitors can find exhibit prospectuses and entry forms for each show on their respective websites: www.PIPEXstampshow.org and www.SEAPEXshow.org. Deadlines for exhibit entries are 1 April for PIPEX and 1 August for SEAPEX.

No special forms are needed to qualify for the rebates. When the exhibits chairs of PIPEX and SEAPEX receive an entry form for a new exhibitor, they will check for membership in one of the clubs or societies that belongs to the NW Federation, and will initiate the rebate.

New exhibitors can find many sources of advice about exhibiting. Among them is the APS Manual of Judging and Exhibiting, Seventh Edition, accessible on the APS website, www.stamps.org.

The American Association of Philatelic Exhibitors (AAPE) has many resources to help exhibitors including instructions on constructing an exhibit and examples of different exhibit types at their website, www.aape.org.

Most stamp clubs have members who are experienced exhibitors who will be delighted to advise and assist new exhibitors. George Struble, in Salem, Oregon, has been on a campaign to encourage new exhibitors and is available to assist potential exhibitors in Oregon; contact him at 503-364-3929 or gstruble@willamette.edu.



Richard Horner, Evergreen Stamp Club, with his novice exhibit on charity stamps

Federation Journal Wins Award

As announced in the last edition, we made a small change to the title of *The Federated Philatelist* to label it as a "journal" rather than a "newsletter." This change enabled us to enter the publication in the periodical category of philatelic literature exhibitions.

Accordingly, your editor entered the 2015 set of journal editions in the literature exhibition held at **Chicagopex** on 18–20 November 2016.

We are very pleased to announce that the journal received a **Vermeil** award in this exhibition.

This is the first time in memory that the journal has competed in a philatelic literature exhibition and to achieve such a high award on the first try is very gratifying.

All of our readers can help maintain and hopefully improve this quality by submitting a short article on an item in your collection, or a report on significant events and activities involving your club. See page 2 for address.

American Philatelic Research Library

The American Philatelic Research Library located at the American Philatelic Center in Bellefonte, Pennsylvania, held its Grand Opening event on 28–29 October 2016.

The celebration included a formal dinner on Friday evening at the American Philatelic Center and a ribbon cutting ceremony on Saturday morning in the main library hall.

The event marked the completion of several years of renovation of the historic match factory purchased by the library in 2002, and the relocation of the library from its temporary space at the American Philatelic Society headquarters. The design and construction of the new building were accomplished by Pieper O'Brien Herr Architects.

The entire center contains about 100,000 square feet and includes rental space for eleven business tenants.

The new library uses 19,000 square feet for reading and research space and for shelving the world's largest collection of philatelic literature.

The facility includes a gift shop that offers new and used books, gifts, and souvenirs.

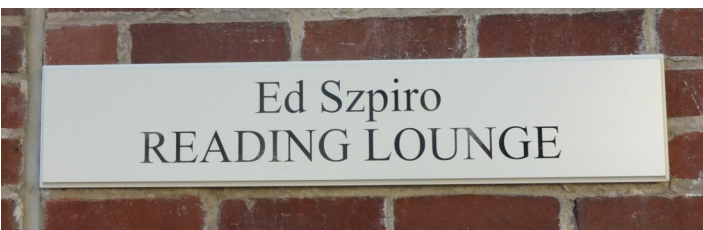
The library is open to the public, but only APS members have borrowing privileges.

The stacks on the upper level contain copies of almost every philatelic periodical publication.



APRL Stacks view from upper floor

Also on both levels are reading areas donated by various benefactors. One such area recognizes Ed Szpiro, a prominent Northwest philatelist.



UPCOMING SHOWS

SANDICAL 2017

January 27-29

Al Bahr Shriners Center, San Diego, CA

GESSPEX

January 28-29

VFW Hall, Redmond, WA

ARIPEX 2017

February 17-19

Mesa Convention Center, Mesa, AZ

TEXPEX 2017

February 24-26

Hilton DFW Conference Center, Grapevine, TX

APEX 2017

March 3-5

Senior Activities Center, Anchorage, AK

AmeriStamp Expo 2017

March 3-5

Reno-Sparks Convention Center, Reno, NV

Bay Horse, Montana



— by Anne B. Harris, *Inland Empire Philatelic Society*

The philatelic cover shown here was posted from Bay Horse, Montana, to Overland Park, Kansas, on 17 November 1936. The 50c Zeppelin Century of Progress stamp would have overpaid the 6c airmail rate, 10c special delivery fee, and 10c registration fee for a one ounce letter.

It features a hand-drawn and colored fancy cancel and a hand-colored cachet.

Bay Horse was named for Bay Horse Creek, which in turn was supposedly named for a wild bay stallion. It was situated at latitude 45.043°N, longitude 105.567°W at an elevation of 3,788 feet. This places it approximately 15 miles southwest of Biddle, Montana.

The Bay Horse Post Office was established in 1917, with Perry Murphy, who first homesteaded the area, appointed clerk. The post office was probably established to service a working ranch nearby.

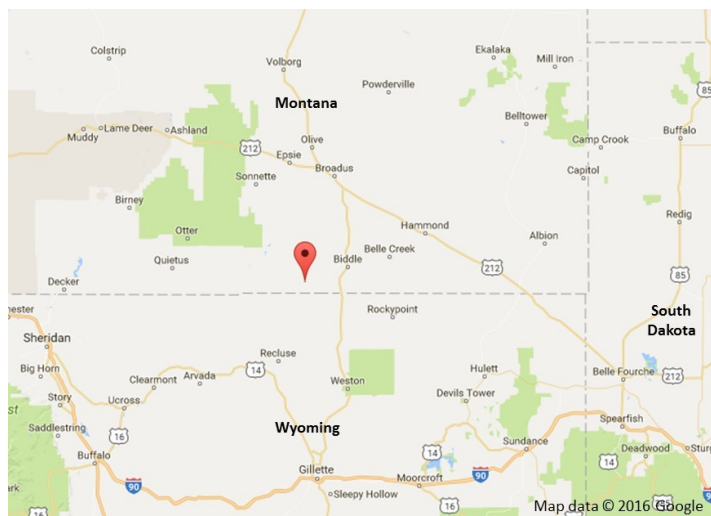
The Bay Horse Creek Ranch is still in existence. It serves as a hunting and recreational facility.

When Powder River County was established in 1920, Guy Seeley was appointed Postmaster. Following Postmaster Seeley was Postmaster Margaret Cannon in 1930, and the last Postmaster, James Hewitt in 1946.

Postmaster Hewitt stayed until the post office closed in 1955, when all mail deliveries were moved to Recluse, Wyoming, 34 miles south of Bay Horse, Montana. The area is currently serviced by the post office in Biddle, Montana.



Registry sealing marks & Receiving marks on reverse



Oregon Stamp Society Centennial Exhibition

— by Sheryll Ruecker, Oregon Stamp Society

The decision to hold a centennial exhibition for the Oregon Stamp Society at the Multnomah County Library was a simple one, as in 2012, we had put on our first exhibition there and it had gone very well. I had better clarify and say first exhibition this century, since we had used this very library as the venue for our first exhibition back in 1928.

We chose the period covering August because we had plans to ask the American Philatelic Society (APS) to hold their summer show here that same year. Plans that, as you all know, bore fruit.

Collins Gallery. Take the sweeping staircase to the third floor, or take the elevator, and you will arrive at the Collins Gallery, a spacious area lit by a large ornate domed skylight. Recitals, poetry readings, and educational and art exhibitions are held there regularly.

Three wall cases on the east wall, four end cases north and south, and five floor cases on the west side near the stairs provided the spaces for exhibits.



Exhibits. Many groups of school children had visited the last exhibition, so we were encouraged to provide educational exhibits. Some creative thinking was required if we were to take advantage of the three-dimensional and other attributes of each case.

Lighthouses of Oregon. We used the vertical space to place three-dimensional objects, and the tall divider to place stories, maps, and illustrative covers.

Charity Seals in Oregon. A full sheet of Portland Christmas seals on one side in the case attracted viewers.

The Ukulele Story. This was a favorite with viewers. Nicely laid out, and featuring a real ukulele, which was played at the reception.



Lighthouses of Oregon in three-dimensional case

Stamp Collector's Tools. This was at the entrance of the exhibition as an overview of stamp collecting.



Return to Sender. The many colorful stamps attracted viewers.



— continued on page 10

OSS Exhibition *(from page 9)*

Ubiquitous Perf Gauge. Those drawn to gadgets liked this one.



We set up several educational exhibits using different types of philatelic material (stamps, covers, airmail, first day covers) to highlight the capability of philately to teach about geography, history, and art.

One World, Many Stamps. This eye-catching exhibit exposing viewers to geography was also very popular.



Around the World with Owen Wade. Owen Wade was an avid collector and producer of covers between the 1940s and 1990s. This exhibit showed a small sampling of the world-wide covers he had arranged to be sent to him.

Air Mail to and from the SS *Leviathan* 1927–1929. This exhibit used the back of the case to place the introduction and other pages vertically. The covers attracted those who liked letters.



SS *Leviathan* Mail

Post-WWI German Inflation Period. Those who liked letters liked the stamp-covered covers in this one, too. The wheelbarrow full of old German money was an attraction.



Post-WWI Austrian Inflation Period. In this exhibit, the colorful stamps took center stage. The simple dialogue between an old man and his young charge was a continuation of that in the German inflation exhibit.

Art Cover Exchange. A colorful exhibit of hand-illustrated cacheted covers drew lots of viewers.

Group and Society Exhibits. The three wall cases were earmarked for the APS to promote APS StampShow 2016, the 100th anniversary of the Oregon Stamp Society, and a display on Oregon, based on the club showcase exhibit shown at PIPEX 2015.

— *continued on page 12*

SEAPEX Award

— by Jack R. Congrove, SEAPEX

At the awards banquet for the Seattle Philatelic Exhibition (SEAPEX) 2016 held on 10 September, SEAPEX President Jack Congrove announced the recipient of the 2016 SEAPEX Distinguished Service Award.

This is the highest award presented by the organization and recognizes exceptional performance, leadership, and service by a member of the philatelic community. Priority is typically given to those who have contributed in some manner to the SEAPEX exhibition.

The recipient this year was **David McNamee**, an APS-accredited Chief Philatelic Judge and the immediate past Chairman of the Committee on Accreditation of National Exhibitions and Judges (CANEJ).

During the early stages of SEAPEX's plans and efforts to convert from a regional show to a WSP exhibition, and especially during the four-year probationary period, David provided helpful guidance on setting up an organization and encouragement on implementing changes to enhance many aspects of the show.

He was an advocate for SEAPEX during the application process and recommended approval of its application to the American Philatelic Society.

Because he was unable to be in attendance at the banquet, he did not receive the actual award until November.



Larry Crain (left) presenting the award to David McNamee

Larry Crain made the presentation on behalf of SEAPEX at the meeting of the Council of Northern California Philatelic Societies on 13 November.

Congratulations and thanks to David for all of his efforts.

**Seattle
Philatelic Exhibition
SEAPEX 2017**

**an APS-accredited
NATIONAL Stamp Exhibition**

100th Anniversary



Camp Lewis, Washington
Joint Base Lewis-McChord

**FREE PARKING
FREE ADMISSION**

**25+ Stamp Dealers
160+ Frames of Exhibits
USPS Postal Booth
Scout Merit Badge Seminar
China Stamp Society Convention
Society for Hungarian Philately
Show Cachet and Cancellation
What's in Your Attic Evaluations
Free Stamps for Youth/Educators**

September 8–10, 2017
Fri. 10AM–6PM
Sat. 10AM–5PM
Sun. 10AM–4PM

Tukwila Community Center
12424 42nd Avenue South
Tukwila, Washington

<http://www.seapexshow.org>
Facebook: Seapex: Seattle Philatelic Exhibition

OSS Exhibition (from page 10)



Cachet Artwork



Oregon Stamp Society display case

The **Northwest Philatelic Library (NPL)** exhibit was in an unusual glass floor case with a peaked roof. It featured books on stamps and stamp collecting.



Reception. On 3 August, between 6:00 and 7:30 PM, we chose to take up the library's offer to put on a reception, and timed it to coincide with APS StampShow 2016. It was well attended and included visitors from as far away as the east coast.

After a welcoming speech by Oregon Stamp Society Foundation president Jerry Rottman, exhibitor Dennis Ladd entertained us with two songs played on his ukulele, which he had retrieved from one of the exhibit cases.

The light refreshments provided by the library were much appreciated by those who had spent the day traveling to Portland, or setting up exhibits for the APS show.

Feedback. We have received superlative responses such as: "stunning," "awesome," and "superb" from our club members, the public, and those who have seen photos in social media.

Library staff members were delighted when we accepted their request to extend the exhibition for another two weeks.

"We are very happy with the historical and artistic components of the stamp exhibits. Your collectors did a beautiful job of displaying the pieces."

One library patron passed on the following comment:

"The philatelic display in the Collins Gallery is fascinating. I appreciate the content as well as the attractive display. Thank you."

A social media response:

"It's a fantastic exhibit! Even if it got 1 kid collecting stamps, that was worth all your effort and persistence in creating such a fine, interesting exhibit."

You Can Do It Too! Certainly the Multnomah County Library is not alone in providing exhibit space that stamp clubs could take advantage of. Why not inquire at your local library? You may spark a whole new generation of stamp collectors, and have some fun while doing it.

Here are some sample library exhibition deadlines for planning purposes.

12 months before: Confirm exhibition with venue officials

6 months before: Receive list of exhibitors, exhibits, and descriptions. Establish exhibition title and description.

5 months before: Receive images for Marketing to design publicity postcard and news releases.

2 months before: Obtain list of names and addresses to mail postcards.

1 month before: Firm up reception details, send postcards .

Good luck with your exhibition.

APEX 2017

The Anchorage Philatelic Society will host its annual Alaska Philatelic Exhibition (APEX) on 3–5 March at the Anchorage Senior Activity Center.

The theme will be “Educating Alaska” and a special show cover will honor the 100th anniversary of the University of Alaska.

They are looking for exhibits. If you are interested, please contact the Chairman, Eric Knapp (eknapp@gci.net)

Alaskan Postmarks

Members of the Alaska Collectors Club are currently working on a project to update the *Postmarks of Territorial Alaska* catalog originally published by Dr. William Helbock.

Dr. Helbock had started this update before he passed away and several members have taken up the challenge to complete the project.

They are making great progress, but can always use additional help. Contact Eric Knapp (eknapp@gci.net).

Sno-King Stamp Show

The Sno-King Stamp Club would like to again have its annual club show in Everett at the Holiday Inn in early 2017. However, due to remodeling issues happening there, everyone is asked to **stay tuned** for the actual location this year, which is still to be determined.

Northwest Philatelic Library

The Northwest Philatelic Library (NPL) is searching for a permanent Editor for their newsletter, *Book Reports*. Their Interim Editor is Greg Alexander, who also serves as their Webmaster.

Book Reports is published quarterly in January, April, August, and October. They are continually looking for articles, book reviews, and suggestions for their recurring “Stumper” column.

The deadline for submissions is the 10th of the month preceding publication. If you would like to submit an article or are interested in assuming the Editor position, contact the NPL President, Orly Trier (nwpl@qwestoffice.net).

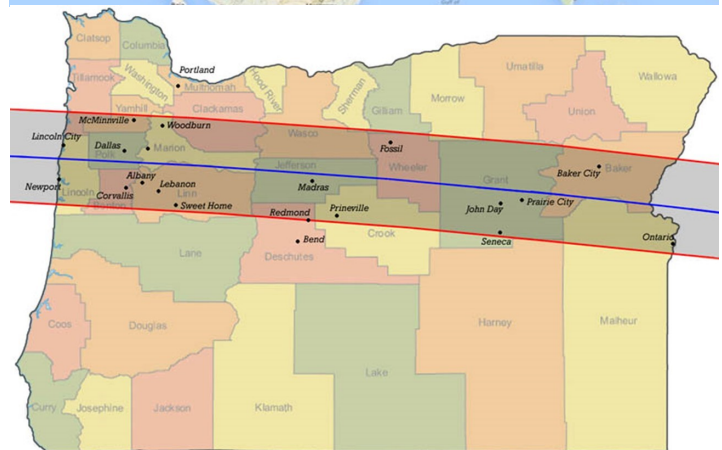
Total Solar Eclipse

— by Jack R. Congrove, Northwest Federation

The Pacific Northwest is fortunate to be squarely in the path of totality for the total eclipse of the Sun that will occur on 21 August 2017. This will be the first total solar eclipse visible in the continental U.S. in 38 years

If there are clear skies, at least a partial eclipse will be visible everywhere in the continental U.S.

A solar eclipse is a lineup of the Sun, Moon, and Earth. The Moon comes directly between the Sun and Earth and casts a shadow on the Earth’s surface. If you are in the dark portion of the shadow (umbra), you will see the Moon cover the entire area of the Sun in a total eclipse. If you are in the light part (penumbra), you will see a partial eclipse. Take precautions not to view the Sun directly.



Path of Totality

Observers in all of the Federation states and provinces, except northern Alaska, will see at least a partial eclipse. If you want to witness totality, you must arrange to be somewhere in the area of this shaded band in Oregon.

This natural phenomenon provides an opportunity to create some special commemorative covers and obtain cancellations at post offices in the path of totality. Maybe Oregon clubs could host an eclipse party.

Hollygram Air Mail



The Claude O'Callaghan Collection/The Museum of Flight

Christmas Airmail Hollygram 1928 (inside)

— by Jack R. Congrove, Northwest Federation

This year, the theme of the Seattle Philatelic Exhibition (SEAPEX) celebrated the 100th anniversary of Boeing Aircraft.

As part of this celebration on Thursday, 8 September, before the show, the show committee organized a tour of the Museum of Flight located on the west side of Boeing Field (now King County International Airport) in Seattle.

The tour was led by museum docent Steve Ellis, himself a stamp collector.

In addition to the many aircraft, spacecraft, and other aerospace artifacts, the Museum houses an extensive Library and an Archive of important documents, papers, manuals, and other historical memorabilia and ephemera relating to aerospace development and operations.

Many of these items are airmail related and our tour was offered a special opportunity to view selected items from this archive. Mr. Ellis, in coordination with Archivist Jessica Jones, had selected several significant airmail related items for our viewing.

The archives and library are normally not accessible to the general public and are generally limited by appointment to

persons doing serious historical research.

However, it is possible to arrange access to both of these facilities by prior coordination with the Archivist (JJones@museumofflight.org) or the Head Librarian (MLoweprather@museumofflight.org).

Pictured above is one of the items in the collection. It is an airmail “Hollygram” sent in 1928, to Mr. Claude O’Callaghan and is part of the Claude O’Callaghan Collection at the Museum of Flight..

In 1928, Claude Vincent O’Callaghan was the General Traffic Manager for Varney Air Lines. Varney had started service two years before on 6 April 1926, based in Boise, Idaho, and had the contract for Contract Air Mail Route Five (CAM-5).

CAM-5 provided service between Elko, Nevada, and Pasco, Washington, with an interim stop in Boise, Idaho.

O’Callaghan was born in Bonners Ferry, Idaho, on 27 July 1896. He served in the US Army during WWI and later attended the University of Washington where he was a member of the Sigma Chi fraternity.

In 1927, he was working for Varney as air mail supervisor in Spokane. Presumably he was promoted and moved to



Christmas Airmail Hollygram 1928 (front & back)

Seattle when this card was sent. Varney had added Seattle, Portland, and Salt Lake City to its routes.

In 1930, Varney Air Lines was acquired by United Aircraft and Transport (Boeing) and folded into a group of airlines that was later spun off to form United Air Lines.

O'Callaghan remained with this group and in the 1930s was Supervisor of Regulations in the United Air Lines operations department. In 1937, he became United's Assistant Chief of Flying. He died on 23 September 1992.

The Hollygram was mailed from Chicago on 20 December 1928, and sent by Harold Crary. The message reads:

"With Greetings of the Season to my friend Claude O'Callaghan, whose cooperation I have cordially appreciated."

Crary, a former newspaperman, had worked for Boeing Airplane Company in its advertising department. In 1929, he opened the small original office for United Air Lines in Chicago and in 1934, became the Director of Traffic, Advertising, and Publicity for United Air Lines. Eventually, he advanced to Vice President of United.

The hollygram apparently was created to be an airmail Christmas letter. I could find no information on its artist or publisher.

The letter is franked with one five-cent Air Mail Beacon stamp (Sc#C11) that paid the new one-ounce airmail rate that had gone into effect on 1 August the same year.

The inside design shows Santa with his bag of gifts astride a Ford Trimotor transport airplane being pulled by his team of six reindeer. One wonders what happened to the other two of Santa's team. Perhaps they were not needed with the additional power provided by the three 300-hp aircraft engines.

The tail marking shows "US Mail/CAM 01." CAM-1 was flown by Colonial Air Transport between New York and Boston.

Neither Varney nor the other airlines under Boeing flew the Ford aircraft. They typically used only Boeing planes.

The aircraft flies over a scene that could represent the Northwest with mountains in the background, a river with what looks like a port at the left, and a cityscape that could represent either Portland or Seattle.

Note also the aircraft beacon at lower left in front of what could be an aircraft hanger or other airfield building.

Crary also included a small photo of himself. It is an interesting cover of the season between two aviation pioneers.

Club Activities



The **Alaska Collectors' Club** is one of our newest members. They publish a quarterly journal, *The Alaskan Philatelist*, but lately it has been delayed due to the editor's illness. They are working on a project to revise the *Postmarks of Territorial Alaska* catalog. Annual dues are \$15 for US and \$20 elsewhere. Contact eknapp@gci.net. See website www.alaskaphilatellic.org.



The **American Air Mail Society—Northwest Chapter** will hold its holiday potluck on 10 December at the home of Larry and Linda Weirather. The chapter has no website. Dues are \$8 per year.



The **Anchorage Philatelic Society** publishes *The Anchorage Philatelist* newsletter. This newsletter has also been delayed. The club plans to hold its Christmas party on 14 December. They are also planning their Alaska Philatelic Exhibition (APEX) on 3–5 March 2017. Dues are \$10 per year, \$15 for families, and \$2 for youth. www.anchoragephilatellic.org.

The **Bellingham Stamp Club** has not produced a recent newsletter. They have joined with another club in Lynden and are meeting with them for an interim period.



The **British Columbia Philatelic Society** has not published a recent edition of their newsletter. Meeting information is distributed via their website. Meetings are each Wednesday at 7:30 PM at a new location in the church hall north of the West Burnaby United Church. There will be no meetings the last two weeks of December. Dues are \$20 per year for individuals, \$30 for families, and \$7.50 for students younger than 18. Website: www.bcphilatellic.org.



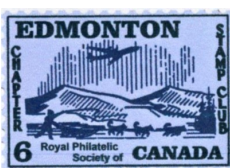
The **British North America Philatelic Society** (Pacific Northwest Regional Group) publishes the *West Coast Express*. In our area are the Calgary, Edmonton, and Pacific Northwest chapters. The PNW Chapter publishes the *British Columbia Postal History Newsletter*. They are planning for BNAPEX 2017 to be held in Calgary in September. Dues are \$10 per year for all. See their website: <http://bnaps.org/regional.php>.

The **Central Oregon Postal Collective** is one of our newest members. They do not publish a newsletter. They meet on the first Saturday at 10:00 AM at the Redmond Karate Studio. They accept donations in lieu of dues. Contact stbucknum@msn.com.



The **Collectors Club of Seattle** does not publish a newsletter. They hold an auction on the first Friday each month. They have an extensive philatelic library. The club is open on the first Friday at 6:30 PM and on Tuesdays from 11:30 AM to 1:00 PM at the Maple Leaf Evangelical Church. However, the club is going to move to a new location because they can no longer occupy the church building. Dues are \$20.

The **Eagle Stamp and Postcard Club** does not publish a newsletter. They hold auctions about four times per year. They meet on the first Tuesday each month at 7:00 PM at the Eagle Methodist Church. No dues listed. Website: <http://www.eaglestampandpostcardclub.com/>.



The **Edmonton Stamp Club** publishes a monthly newsletter, *Bulletin*. Each edition is full of interesting news and articles. They will hold their holiday party on 5 December. They are planning their National Spring Show for 25–26 March. They meet on second and fourth Mondays at 6:30 PM at St. Joseph High School. Dues are \$30 per year for individuals, \$40 for families. There is a one-time \$5 fee for a name tag. See www.edmontonstampclub.com.

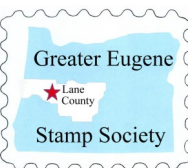


The **Evergreen Stamp Club** will hold its annual Christmas dinner at the Golden Steer in Kent on 21 December. They meet on the third Wednesday each month at 7:00 PM at Kent Commons. Dues are \$20 per year. See <http://stamps.org/Evergreen-Stamp-Club>.

The **Garden City Stamp Club** does not publish a newsletter. They meet on the first Wednesday and third Monday each month at 7:00 PM at the Atonement Lutheran Church in Missoula. They will hold their Christmas party on 19 December. Annual dues are \$10. See their website at <http://gardencystampclub.com/>.

The **Gastineau Philatelic Society** does not publish a newsletter. They meet on the third Thursday each month at 6:00 PM at the Mendenhall Public Library.

The **Greater Eastside Stamp Society** publishes the *GESS Newsletter*. They offer show and tell presentations at each meeting. They will hold their Christmas dinner on 1 December. They meet on the first and third Thursday each month at 7:00 PM at Unity Church of Bellevue.



The **Greater Eugene Stamp Society** publishes the *Echoes* bimonthly newsletter. It is running a series of articles on South African se-tenant stamps. They will hold installation of new officers and their Christmas party on 14 December. They

Club Activities (from page 16)

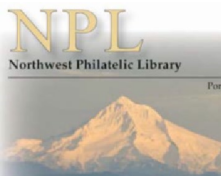
meet on the second and fourth Wednesday each month at 7:00 PM at Saint Jude's Catholic Church. Dues are \$15 per year, \$5 for youth under 18. They have a new website: <http://greatereugenestampclub.weebly.com/>.



The **Inland Empire Philatelic Society** publishes *The Lilac Hinge*. They held their Apple Harvest bourse on 24–25 September and their annual donation auction on 22 November. They will hold their holiday dinner on 13 December. They meet on the second and fourth Tuesday each month at 7:00 PM at the Eagles Hall. Dues are \$10 per year for individuals, \$15 for families, and \$5 for youth under 18. Website: www.ieps-stamps.com.

The **Linn County Philatelic Society** does not publish a newsletter. They meet on the second Thursday each month at 7:00 PM at The Villas. Their website is out of service.

The **North Shore Stamp Club** does not seem to have a newsletter or website. They meet every other Monday at 7:00 PM at Summerhill PARC retirement residence in North Vancouver, BC. Contact sandnworley@shaw.ca.



The **Northwest Philatelic Library** publishes a quarterly newsletter, *Book Reports*. They have received several recent donations and several new publications have been added to the library collection. They have surplus books for sale. Dues are \$12 for those 18 and older, \$3 for under 18. See their website: <http://www.nwpl.org/>.

The **Okanagan Mainline Philatelic Association** publishes the *OMPA News*. They meet five times a year in January, March, May, September, and November. They held their Summerland stamp show on 12 November. Dues are \$10 per year, \$14 for Family, and \$2 for Junior (under 16).

The **Olympia Philatelic Society** does not publish a newsletter. They plan to hold their Christmas party on 12 December. They meet at 7:30 PM on the second and fourth Monday each month at the Olympics West Retirement Inn. Dues are \$10 per year. See their website at <http://olympiaphilatelicssociety.org/>.

The **Olympic Philatelic Society** does not publish a newsletter. They meet at 7:00 PM on the second and fourth Tuesday each month at the Silverdale Community Center.



The **Oregon Stamp Society** publishes a monthly newsletter, *The Album Page*. Each edition has an article on the featured cover of the month. The club put on a centennial exhibition in August (see p.9). They will hold their Christmas party on 13 December. Meetings are on the second and fourth Tuesday each month at their

clubhouse. Dues are \$24 per year for regular members, \$16 for associate members who reside outside the area. Website: www.oregonstampsociety.org.

The **Pacific Northwest Postal History Society** publishes a quarterly journal, *The Oregon Country*. Each issue has articles with nice illustrations of NW postal history material. The latest issue has a complete history of Portland post office locations. Dues are \$20 per year.

The **Peace Arch Stamp Club** does not publish a newsletter. They meet at 5:30 PM on the first Wednesday of the month (except July and August) at the Surrey Come Share Society Centre. Dues are \$10 per year. See their website: www.peacearchstampclub.com/.

The **Portland Philatelic Exhibitions** group is one of our newest members. They organize and conduct the PIPEX exhibition on behalf of the NWFSC. They are planning the next PIPEX for 12–14 May 2017. Membership is voluntary. Website: www.pipexstampshow.org.



The **Salem Stamp Society** publishes a monthly newsletter, *Willamette Stamp & Tongs*. They held their election of officers in November. They will hold their Christmas dinner on 14 December.

They meet on the second Wednesday each month at 6:00 PM at Fire Station District #1. Dues are \$10 per year for individuals, \$15 for couples, and \$20 for families. Website: www.salemstampsociety.org.



**SNO-KING
STAMP
CLUB**

The **Sno-King Stamp Club** publishes a monthly newsletter, *Sno-King Stamp Club Philatelic News*. They will hold their holiday dinner

on 14 December. The club meets in Everett on the second Wednesday and in Edmonds on the third Friday each month. Dues are \$10 per year, \$5 for youth under 18. <http://sno-kingstampclub.freehostia.com>.



The **Southern Oregon Philatelic Society** publishes a monthly newsletter, *The Philatelic Reminder*. They held a very successful auction in September. They will hold their Christmas party and install new club officers on 1 December. They meet the first Thursday

at 7:00 PM at a new location at the First Methodist Church in Medford. They hold swaps at the homes of members on the third Saturday afternoons. Dues are \$15 per year.

— continued on page 18

Club Activities *(from page 17)*



The **Strait Stamp Society** publishes a bi-monthly newsletter, *Strait Stamp Talk*. They meet on the first Thursday each month at 6:00 PM at the Sequim Library. They have begun a mid-month meeting at 10:00 AM at Burger King for members who cannot drive long distances in the dark, winter weather. The next meeting is 21 December. The club has no dues, but accepts donations. Website www.straitstamp.org.

The **Tri-Cities Stamp Club** publishes a monthly newsletter, *The Triangle*. Dan Herting is the new editor taking over from Corliss Clay starting in November. They will hold their Christmas party on 21 December. They meet on the fourth Wednesday at 7:00 PM at the Charbonneau Activity Room. Dues are \$10 per year for adults, \$1 for students. Contact the club at billales3@charter.net



www.uscs.org.



The **Vancouver Island Philatelic Society** publishes a monthly newsletter, *The Guideline*. They will hold their Christmas party on 22 December. Meetings include a small auction. The club meets at 7:30 PM on the fourth Thursday each month at St. Aidan's Church. Dues are \$20 per year. See their website at www.vicstamps.com/vips.htm.



The **Washington State Philatelic Society** does not publish a newsletter. They meet on the second and fourth Thursday of each month at 7:00 PM at the Gethsemane Lutheran Church in Seattle.



The **Northwest Federation of Stamp Clubs** will hold its annual meeting at the PIPEX 2017 show in Portland, Oregon on 13 May 2017.

[*Ed. note: If you would like to have news about your club activities and upcoming plans published in future columns, please email either me (jackcongrove@comcast.net) or Lisa Foster (fosteld@gmail.com) with the details.*]

Inverted Jenny to Sell

— by Jack R. Congrove, Northwest Federation

The American Philatelic Research Library, which this summer received ownership of the third stamp recovered from the stolen McCoy block of four Inverted Jenny stamps (Sc#C3a), is taking action to put the position 76 stamp up for sale.

The APRL is already the owner of another copy of the stamp (position 65) and the trustees apparently think that one copy is enough.

C3a has a current Scott Catalogue value of \$450,000. The unusual provenance and the cachet of being part of the famous McCoy block might add appeal to potential buyers and thus increase the selling price.



APS Executive Director Scott English at return ceremony

This stamp was found by a non-collector in Northern Ireland and returned in a ceremony at the World Stamp Show in New York in June.

The original block was stolen from a stamp show in Norfolk, Virginia in September 1955. The robbery has never been solved.

So far, three of the four stamps have turned up, the first (position 75) in Chicago in 1977. That stamp was sold by the APRL to raise funds in 1981. The second copy, which the library still owns, was found in New York in 1981.

This copy somehow ended up in the effects of a person in Northern Ireland and was inherited by his grandson, Keelin O'Neill. O'Neill submitted it to Spink Auctions where it was discovered to be one of the missing stamps.

When this came to light, O'Neill waived all claims to it. He did not go away empty-handed, however. He received a reward of \$50,000 offered by Donald Sundman of Mystic Stamp Company.

Due to its condition, the stamp might be worth \$200,000.

Philatelic Quiz

Here is a quiz to celebrate the holiday season. On 19 November 1985, Guernsey issued a miniature sheet of 12 stamps showing religious and folk characters noted for their gift-giving (Sc#319). Can you identify them?

- ___ 1. King of Persia brought the gift of gold to Jesus.
- ___ 2. King of Sheba brought the gift of frankincense to Jesus.
- ___ 3. This old Italian woman delivers gifts on Epiphany Eve.
- ___ 4. This Swedish girl celebrates St. Lucia Day by bringing her family coffee and sweets.
- ___ 5. This 4th-century saint had a legendary habit of secret gift-giving.
- ___ 6. This child brings Christmas gifts to children in Germany and central Europe.

- ___ 7. This gift-bringer keeps a list of children who have been good.
- ___ 8. King of Arabia brought the gift of myrrh to Jesus.
- ___ 9. This French character makes an offering of a newborn lamb on Christmas Eve.
- ___ 10. This Czech leader braved harsh conditions to bring gifts to the poor.
- ___ 11. This Norwegian pixie delivers presents to children on Christmas Eve.
- ___ 12. This wandering woman leaves gifts for small Russian children.

(Answers on page 2.)



A



B



C



D



E



F



G



H



I



J



K



L

UPCOMING STAMP SHOWS / BOURSES

SHOW DATES			Major events in bold / PNW events in italic	Revised: 28/11/2016	
FRI	SAT	SUN	SHOW NAME	LOCATION	TYPE
2016:					
2-Dec	3-Dec		<i>Vancouver Stamp Fair</i>	Vancouver, BC	Bourse
	3-Dec	4-Dec	<i>Salem Coin, Stamp, & Postcard Show</i>	Salem, OR	Bourse
	3-Dec	4-Dec	PENPEX (Sequoia Stamp Club)	Redwood City, CA	Show
		11-Dec	<i>Fenwick Stamp & Coin Show</i>	Renton, WA	Bourse
2017:					
27-Jan	28-Jan	29-Jan	SANDICAL (San Diego Co. Philatelic Council) (WSP)	San Diego, CA	Show
	28-Jan	29-Jan	<i>CESSPEX</i> (Greater Eastside Stamp Society)	Redmond, WA	Show
	28-Jan		<i>Coin & Stamp Fair</i> (North Shore Numismatic Soc.)	Burnaby, BC	Bourse
		12-Feb	<i>Fenwick Stamp & Coin Show</i>	Renton, WA	Bourse
17-Feb	18-Feb	19-Feb	ARIPEX (Arizona Federation of Stamp Clubs) (WSP)	Mesa, AZ	Show
24-Feb	25-Feb	26-Feb	TEXPEX (Texas Philatelic Association) (WSP)	Grapevine, TX	Show
3-Mar	4-Mar	5-Mar	<i>APEX</i> (Anchorage Philatelic Society)	Anchorage, AK	Show
3-Mar	4-Mar	5-Mar	APS AmeriStamp Expo (WSP)	Reno, NV	Show
	25-Mar	26-Mar	<i>Inland Empire Philatelic Society Apple Blossom</i>	Spokane, WA	Bourse
	1-Apr	2-Apr	<i>Coin & Stamp Fair</i> (North Shore Numismatic Soc.)	Burnaby, BC	Bourse
	1-Apr		<i>John D. Arn Stamp Symposium</i> (NWFSC)	Moses Lake, WA	Education
	8-Apr	9-Apr	<i>SOPEX</i> (Southern Oregon Philatelic Society)	Central Point, OR	Show
		9-Apr	<i>Fenwick Stamp & Coin Show</i>	Renton, WA	Bourse
	15-Apr	16-Apr	<i>Spring Bourse</i> (Evergreen Stamp Club)	Kent, WA	Bourse
	22-Apr	23-Apr	<i>Spring Bourse</i> (Calgary Philatelic Society)	Calgary, AB	Bourse
	22-Apr		<i>Roundup Stamp & Coin show</i> (Olympia Philatelic Soc)	Chehalis, WA	Bourse
28-Apr	29-Apr	30-Apr	WESTPEX (WSP)	Burlingame, CA	Show
12-May	13-May	14-May	PIPEX Pacific Intl. Philatelic Exhibition (WSP)	Portland, OR	Show
19-May	20-May	21-May	RMSS (Rocky Mountain Philatelic Exhibition) (WSP)	Denver, CO	Show
	27-May		<i>Coin & Stamp Fair</i> (North Shore Numismatic Soc.)	Burnaby, BC	Bourse
		11-Jun	<i>Fenwick Stamp & Coin Show</i>	Renton, WA	Bourse
23-Jun	24-Jun	25-Jun	NTSS (American Topical Association) (WSP)	Milwaukee, WI	Show
	15-Jul	16-Jul	<i>Summer Show</i> (Evergreen Stamp Club)	Kent, WA	Show
4-Aug	5-Aug	6-Aug	APS StampShow (begins 3-Aug) (WSP)	Richmond, VA	Show
		13-Aug	<i>Fenwick Stamp & Coin Show</i>	Renton, WA	Bourse
1-Sep	2-Sep	3-Sep	BNAPEX-CALTAPEX (BNA Philatelic Society)	Calgary, AB	Show
8-Sep	9-Sep	10-Sep	SEAPEX Seattle Philatelic Exhibition (WSP)	Tukwila, WA	Show
	9-Sep	10-Sep	<i>Coin & Stamp Fair</i> (North Shore Numismatic Soc.)	Burnaby, BC	Bourse
		8-Oct	<i>Fenwick Stamp & Coin Show</i>	Renton, WA	Bourse
	25-Nov		<i>Coin & Stamp Fair</i> (North Shore Numismatic Soc.)	Burnaby, BC	Bourse
		10-Dec	<i>Fenwick Stamp & Coin Show</i>	Renton, WA	Bourse
Repetitive Events			<i>Rose City Stamp Fair</i> (2nd Saturday OSS clubhouse)	Portland, OR	Bourse
			<i>Collector's Corner</i> (4th Saturday OSS clubhouse)	Portland, OR	Bourse