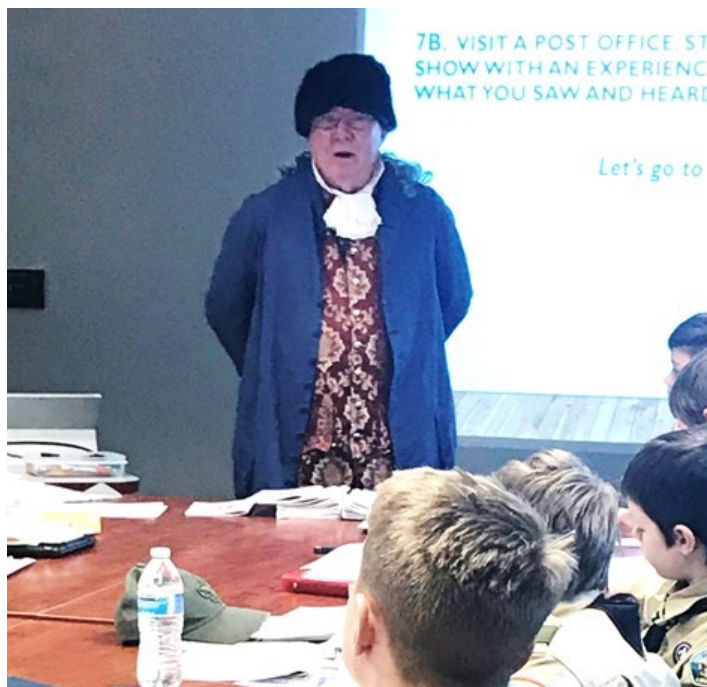


Federated Philatelist

Journal of the Northwest Federation of Stamp Clubs

No. 225 December 2018

SEAPEX 2018



Dr. Ben Franklin addresses the Scout merit badge seminar
(photo by Steve Brandt)

— by Jack R. Congrove, Northwest Federation

On 14–16 September 2018, the Seattle Philatelic Exhibition (SEAPEX) held their annual exhibition at the Tukwila Community Center, near the SeaTac Airport in suburban Seattle. SEAPEX is a World Series of Philately (WSP) national show.

As a WSP show, the Grand Award winners for the Multi-frame and Single Frame exhibits qualify to compete in the Champion of Champions (CoC) exhibitions sponsored by the American Philatelic Society (APS).

The Single Frame CoC competition will be held at the APS AmeriStamp Expo in Mesa, Arizona, 15–17 February 2019. The Multi-frame CoC competition will occur at the joint APS-American Topical Association show in Omaha, Nebraska, on 1–4 August 2019.

SEAPEX is one of three WSP national shows that take place within the Federation region. The other two are PIPEX in Portland, Oregon, and the Edmonton Spring National Show in Edmonton, Alberta.

Attendance at the show this year was the best in the last several years. Dealers I spoke with reported good sales, and I noticed that the tables were usually well occupied.

Two national societies held their conventions at the show: the American Helvetia Philatelic Society (AHPS) and the United Postal Stationery Society (UPSS). Both groups had multiple entries in the philatelic exhibition.

The exhibition featured a total of 44 competitive exhibits mounted in 176 frames. There were 202 frames of exhibits overall that included three court of honor exhibits and eight society/club showcase exhibits.

The show hosted several meetings and presentations. The AHPS and UPSS each held board meetings and general meetings. Scott English, Executive Director of the APS, conducted an APS town hall meeting that extended well beyond its scheduled time due to attendee interest.

—continued on page 4

Inside

SEAPEX 2018 – Jack R. Congrove	1
Executive Secretary's Notes	3
PIPEX Club Exhibits	3
Labels Purporting to be Stamps	5
Willamette Valley Stamp Show	5
Spreckelsville – Michael Anderson	6
Arn Philatelic Symposium	7
Save the Salish Sea Exhibit – Laurie Anderson & Lisa Foster	8
Federation Meetings	11
A Handy Checklist of Scott Catalogue Prefixes – Clarence (Chan) Wright	12
Closed Album: Larry Spray	13
VICPEX 2018 – Neil Donen & Peter Newroth	14
Annual Dues and Report Notice	15
Long Time Publisher Closing	15
PIPEX Events Planned	16
Prexie Cover – Louis Fiset	17
Club Activities	18
Quiz	21
Stamp Show Calendar	22

The Federated Philatelist

Editor

JACK R. CONGROVE
P.O. Box 33092
Fort Lewis, WA 98433
jackcongrove@comcast.net

Northwest Federation of Stamp Clubs

<http://www.nwfedstamps.org>

Executive Secretary

LAWRENCE R. CRAIN (2019)
P.O. Box 4395
Medford, OR 97501
Phone: 541-779-9462
larry.crain@gmail.com

Chairman of Board

ERIC R. KNAPP (2021)
APS, Anchorage, Alaska

Board of Directors

MICHAEL P. ANDERSON (2020)
FVPC, Abbotsford, British Columbia

JAMES J. HIRSTEIN (2019)
Garden City SC, Florence, Montana

DARIN P. CHERNIWCHAN (2019)
FVPC, Chilliwack, British Columbia

GEORGE W. STRUBLE (2020)
Salem Stamp Society, Salem, Oregon

Treasurer

J. ALEX HADDEN (2020)
19-7651 Francis Road
Richmond, B.C. V6Y 1A3
Phone: 604-272-2614
alex-hadden@shaw.ca

Judging Chairman

DICKSON H. PRESTON
Seattle, Washington

Historian

WILLIAM B. AILES
Spokane, Washington

Webmaster

DAVID E. HARRIS
Medical Lake, Washington
sqpiano@gmail.com

Facebook

<https://www.facebook.com/groups/836770459670958/>

From the Editor's Desk



As we come to the end of another calendar year, I find myself asking, Where did the time go? As I grow older, time seems to speed up.

Scientists tell us that time is relative and that there is a concept called "spacetime." This model combines the one dimension of time with the three dimensions of space and results in different measurements of distance and time for an event based on the observer's frame of reference.

Unfortunately, one thing that physicists are sure of is that time can only move in the forward direction for each frame of reference. And that means for each of us, time will always advance at the same rate in our own surroundings.

In the Executive Secretary's report on the State of the Federation, he mentions that the Federation currently has 36 active organizations. Actually, he is only counting the ones that have paid their dues. There are three additional clubs that currently are delinquent. I will not mention their names, but they know who they are. Now is the time to get caught up and pay your dues for next year. See the notice on page 14. The Treasurer will be sending out formal notice letters this month.

We now have a full slate of Board members after experiencing some vacancies over the past year. Our new Canadian Director is Dr. Darin Peter Cherniwchan who is a member of the Fraser Valley Philatelic Club.

This issue has reports on some recent shows within the Federation. For **all show organizers**, please send me a notice about your upcoming shows so I can spread the word. Also send me a brief report on how the show went, especially if there were awards or other significant activities.

There is an interesting report starting on page 8 about an exhibit used to support an art show. Perhaps others can employ this concept to promote the hobby at functions and venues that are not traditionally related to philately besides libraries and museums that we have seen before.

The Federation Board held a meeting at SEAPEX in September. See the report on page 11.

I wish everyone a terrific holiday season and a safe and healthy New Year. I look forward to seeing you at a stamp show next year.

Newsletter editors, please make sure I am on your distribution list so I can report your news to others in the Federation.

Also, please look at your collection and send me a couple paragraphs describing an item you find interesting. Club officers, send me news about your club's activities and accomplishments, especially if you present an exhibition. I will publish this information in upcoming editions. **Input for the next edition is due to me not later than 15 February 2019.** Send to: jackcongrove@comcast.net.

— Jack R. Congrove, Editor

Answers to Quiz:

1-G (Quebec), 2-J (Manitoba), 3-C (Arizona), 4-F (Vannatu), 5-I (trick ques-
tion-as a new holiday, there are no traditions, do what you like), 6-B (Montana),
7-A (Washington's Farewell Address), 8-E (Botswana), 9-D (shopping), 10-H
(California). Bonus (officially designated "Washington's Birthday")

Executive Secretary's Notes

As we wind down 2018, let me review the year from the point of view of the Northwest Federation of Stamp Clubs.

The Federation has a complete Board of Directors, which is composed of three officers, two Canadian directors, and two US directors. They are Michael Andersen (BC), Dr. Darin Peter Cherniwchan (BC), Eric Knapp (AK), me Larry Crain (OR), Alex Hadden (BC), Jim Hirstein (MT), and George Struble (OR). Currently in the Federation are 36 active member organizations.

PIPEX, the organization's national show in Portland, was a success. Wording of the agreement with Portland Philatelic Exhibitions to extend hosting the show in Portland to the year 2022 has been agreed on.

There are nine geographical areas of the Federation defined by the medals awarded at PIPEX. The medal is nine-sided and shows a map of the Federation. For the first time in maybe 20 years, there are member clubs from eight of the nine areas—in Canada: British Columbia, Alberta, and Saskatchewan, and in US: Alaska, Idaho, Montana, Oregon, and Washington. Only Yukon territory is missing, but it had a member club in 1983–86. There is not one now.

Other national shows organized by Federation member clubs were held in Edmonton and Seattle.

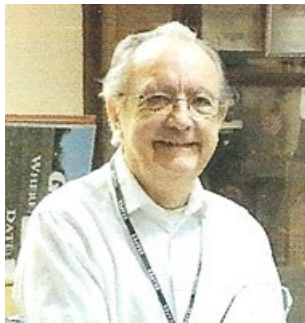
Throughout the year, there are shows with exhibits on the regional level. A new one, the Willamette Valley Show, was added in 2018. It was held in two cities and hosted by two clubs: Greater Eugene Stamp Society and Salem Stamp Society. In the US, it joins shows hosted by Anchorage Philatelic Society, Evergreen Stamp Club, Strait Stamp Society, and Southern Oregon Philatelic Society.

In Canada, there are shows hosted by Vancouver Island and Greater Victoria Philatelic Society in the spring and fall, and by Regina Philatelic Club.

All these Federation shows can award the Federation's Thunderbird ribbon, which goes to an exhibit of particular merit. This ribbon also has a map of the Federation. Contact me or Michael Andersen in Canada if your show does not have one, or if I mistakenly skipped your show. We can keep the Federation vibrant by attending, and maybe exhibiting, at each other's events.

Other clubs have local shows and bourses. (See the listing at the end of this newsletter.)

The Federated Philatelist, this journal, is a key service of the Federation. Each member club is encouraged to forward electronic copies to all its members. And a worth-



while journal it is! Kudos to Jack Congrove's editing. The journal received a Vermeil award in the literature competition at the APS-ATA show in August.

Looking at next year, the Northwest Federation Board of Directors is hoping to strengthen the organization's committee system. Committee chairs for Education and for Youth committees are needed. Helpers, one from each side of the border, are needed for these committees and for the Judging, the Nominations, and the Publications committees.

These are additional activities planned for next year:

7 April: John Arn Philatelic Symposium at Moses Lake, Washington.

12 May: Annual General Membership meeting and election at PIPEX in Portland, Oregon.

29 September: Federation Board meeting at VANPEX in Burnaby, British Columbia.

Elections will be held next year in May at PIPEX for three Board positions. Those open are Executive Secretary, one Canadian Director, and one US Director. Committee positions are filled by appointment. Everyone can volunteer, or encourage others to volunteer.

I have been receiving the newsletter, *The Philatelic Kid* of the Stamp Collecting Club for Kids. I find it very interesting and would suggest anyone working with youth in the Northwest Federation to contact the organization. Mail address is P.O. Box 1809, Kihei, HI 96753-1809, or email MauiStampCollectorDude@gmail.com.

PIPEX Club Exhibits

The organizers of the Pacific International Exhibition (PIPEX) are seeking one-frame club exhibits for their show, which is scheduled to be held at the Red Lion Hotel on the River in Portland, Oregon, on 10–12 May 2019.

The winning club will receive a handsome large silver cup to keep and show off until the next PIPEX. Please find the exhibit prospectus and entry form on the PIPEX website (www.pipexstampshow.org).

Correction

In the listing of the Northwest Distinguished Philatelists Award winners on page 11 of the September edition, the names of James W. Graue (1990) and Donald M. L. Shorting (1990) were inadvertently omitted. *The Federated Philatelist* apologizes and regrets the error.

SEAPEX 2018 *(from page 1)*



USPS Station Personnel with SEAPEX Staff
(photo by Steve Brandt)



Caroline Brandt serving cake at the WAC anniversary ceremony
(photo by Steve Brandt)

The Board of Directors of the Northwest Federation of Stamp Clubs (NWFSC) held a meeting at the show (see a report on page 11). There also was a Federation town hall meeting on Sunday led by Larry Crain, the Federation Executive Secretary.

One of the interesting presentations was “Colonial American Postal History” by Dr. Ben Franklin (aka Tim O’Connor), who showed and described covers in his collection from the 18th century colonial period.

On Saturday, 17 Scouts attended an all-day class to obtain their stamp collecting merit badge. The class was led by Steve Andreason and Rick Crooks assisted by four other instructors. Fourteen of the Scouts were able to complete their merit badge requirements at the show. SEAPEX would like to thank Michael Jaffe for providing new stock books to support the merit badge program.

The US Postal Service (USPS) staffed a postal station at the show on all three days. Their sales were brisk and they ran out of some items and had to reorder and restock. The USPS also produced pictorial postmarks for use at the show based on designs created by our graphic artist, Theresa Cummings from Tacoma.

The United Nations Postal Administration (UNPA) also staffed a booth on all three days. They also reported good sales of their products.

This year, SEAPEX celebrated the 75th anniversary of the US Women’s Army Corps as its show theme with special cachets and a ceremony at noon on Saturday. The guest speaker was Major (Ret) Lois Herrmann from Santa Fe, New Mexico. She spoke about her experiences serving in the US Air Force and with the US Army.

SEAPEX held its award banquet on Saturday evening at the Old Spaghetti Factory restaurant in Southcenter. Each year, the show presents a special Distinguished Service Award to recognize exceptional performance, leadership, and service by a member of the philatelic community over a sustained period. This year the award was presented to Ruth M. Caswell from Tacoma, Washington.

Caswell, as head of the Puget Stamp Group, was the driving force in the effort to make SEAPEX a WSP national show. She also is the visionary founder of Women Exhibitors, a national organization to promote and encourage women exhibitors.

The philatelic awards were presented by Robert Zeigler, the Chief of the philatelic jury. Zeigler also happens to be the President of the APS.

The Grand Award for the multi-frame exhibits went to Timothy P. O’Connor for “Postal History of the Thirteen Colonies, 1675–1782.” He will get to compete for the APS Champion of Champions award at the next APS Stamp-Show in Omaha, Nebraska. George W. Struble from Salem, Oregon, won the Reserve Grand Award for “SCADTA Mail to and from Switzerland,” which also received the American Air Mail Society Award and AHPS Felix Ganz Memorial Grand Award.

—continued on page 5



SEAPEX 2018 *(from page 4)*

Michael Peter won the One Frame Grand Award for “The Stones of a Swiss Classic – The Light Blue Rayon I,” which also received the AHPS Best One-Frame Award. He will be able to compete for the Single Frame CoC prize at the APS AmeriStamp Expo in Mesa, Arizona.

The SEAPEX Youth Championship Award went to Jasmine Batista from Anchorage for “Black Heritage.”

Mark Thompson won the People’s Choice Award for “Women of the Black Heritage Series: From the Fields of Slavery to the Halls of Congress.”

You can find a complete listing of medals and special awards on the SEAPEX website (www.seapexshow.org).

SEAPEX would like to thank all the many donors and volunteers who helped produce and operate the show. It is not possible to accomplish an event like this without their contributions.

Space does not permit listing all contributors, but I would like to thank the Evergreen Stamp Club for the free loan of their exhibit frames; also the donors of our special awards: Puget Sound Collectors’ Club (Grand Award), Dennis Fortney (Reserve Grand Award), Edward Szpiro (Single Frame Grand Award), Hall’s Philatelics (Youth Championship Award), and Collectors Club of Seattle (People’s Choice Award).

SEAPEX 2019 will take place at the same venue on 13-15 September 2019. The show will be celebrating the 50th anniversary of the first manned landing on the Moon.

SEAPEX recently purchased additional exhibit frames from the Inland Empire Philatelic Society, and we hope to expand the quantity of exhibits at the next show. The exhibit prospectus and fillable entry form are available on our website (www.seapexshow.org).

APEX

1–3 March 2019

Anchorage Senior Activities Center

1300 East 19th Avenue

Anchorage, Alaska

50th anniversary 1st Manned Moon Landing

Fri 10:00AM–5:00PM
Sat 10:00AM–4:00PM
Sun 10:00AM–3:00PM

Free Admission

Competitive Exhibits
Junior Exhibition

<http://www.anchoragephilatelic.org>

Labels Purporting to be Stamps

The Collectors Club of Chicago (CCC) was founded in 1928, and has as its mission “the documentation, preservation, advancement, and promotion of philately through education, study research, and services....”

The CCC organized the Arthur Salm Foundation in 1991, in order to conduct technical research on philatelic products, and to report on matters relevant to philatelic forgeries and fantasies. The foundation has issued a series of reports over the years.

The first edition of Salm Paper No. 4, “Labels Purporting to be Stamps,” was issued in May 1997. The document was initiated when CCC member and well-known philatelic writer, Lester E. Winick, received a letter from a collector of topicals, who had purchased hundreds of dollars of stamps representing the fictitious modern-day nations of “Abkhazia,” “Batum,” and “Easdale Island” at stamp shows as prestigious as CAPEX ’96. The collector was told by a stamp dealer at the bourse that “...these countries were emerging nations as a splinter off old Russia.” Another collector buying the same issues was told that “...these countries were forerunners, and would be valuable in the future.”

An extract of the original paper was published in *The Federated Philatelist* in August 1998.

In 2012, Charles E. Cwiakala completely updated and revised the original document, adding a great deal of further and new information. This listing is a valuable reference for identifying bogus issues. You can view this listing online at the CCC website (www.collectorsclubchicago.org/label-stamps.php).

Willamette Valley Stamp Show

For the second year, the Salem Stamp Society and Greater Eugene Stamp Society are planning a unique joint show to be held on consecutive days in each city on 16 and 17 March 2019. This regional show will include exhibits displayed at each site, and the organizers are encouraging new exhibitors to participate.

The exhibits will be judged, with numerous awards, plus very useful feedback from the experienced judges. Exhibits can be from one to four frames, in keeping with the desire to keep it a low-key, welcoming show for developing exhibitors. Exhibits that have earned gold awards at WSP shows like PIPEX and SEAPEX are not eligible.

The prospectus and entry form are on both the Salem Stamp Society website (www.salemstampsociety.org) and the Greater Eugene Stamp Society website (www.greatereugenestampclub.weebly.com).

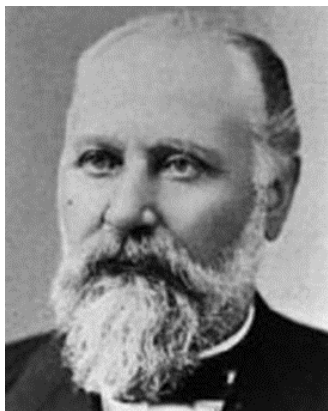
What's in a Name—Spreckelsville

— by Michael Anderson, Fraser Valley Philatelic Club

If you drive east of the Kahului airport on Maui, you can find “Spreckelsville Road” running through acres of abandoned sugar fields and brush, but with little other evidence of what was once a thriving sugar plantation employing thousands of immigrant workers, and built by one of Maui’s most influential and successful businessmen.



Cover to “Golden Rule Bazar” with scarce double outer circle cancel Spreckelsville JUL 16, 1883



Claus Spreckels

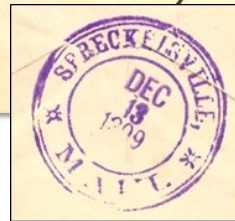
Spreckelsville was built by Claus Spreckels. He was born on 9 July 1828 in Germany; and moved to Charleston, South Carolina in 1848, where he demonstrated natural business skills.

He moved to New York City in 1855, and then to California in 1856, having major business success along the way.

In 1876, he moved to Hawaii and soon became a very influential friend to King Kalakaua.

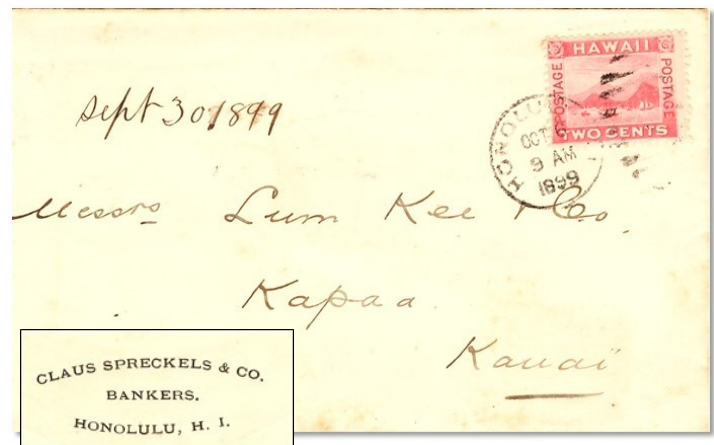
He immediately purchased half of the 1877 sugar crop and secured a lease on 17,000 acres of Crown Land. A 17-mile irrigation system completed in 1878, allowed for successful reclamation of this land and resulted in the creation of the highly successful Hawaiian Commercial & Sugar Co., and a tremendous increase in Hawaii’s sugar production.

W.J. Lowrie was the manager of the company in 1899, as well as Postmaster for Spreckelsville. Mail addressed to him is common, but very few have a “Spreckelsville” receiving back-stamp. Surprisingly, while there must have been a significant amount of outgoing mail from the company, covers with a Spreckelsville postmark are scarce.



Cover from Wailuku to W.J. Lowrie with Spreckelsville 13 Dec 1899 double outer -single inner circle receiving strike

In the 1880s, Spreckels was a major influence in Hawaii. He owned the Oceanic Steamship Company that carried sugar to San Francisco. He was owner and publisher of a newspaper; and was involved with the creation of the Matson Navigation Company. He was a banker and minted Hawaiian money in 1883, and King Kalakaua was personally in debt to him. When the King could not repay the debt in 1886, their friendship came to an abrupt end and Spreckels returned to San Francisco.



Letter from the Claus Spreckels & Co – Bankers – Honolulu

A strong supporter of Queen Liliuokalani, he began to withdraw his financial support from the island when she was dethroned in 1893.

He sold the Hawaiian Commercial & Sugar Company to Alexander and Baldwin.

His newspaper, the *Pacific Commercial Advertiser*, became known as the *Honolulu Advertiser*, Today’s Matson Inc. continues to contribute significantly to the Hawaii economy.

—continued on page 7

Spreckelsville (from page 6)



Cover with VF strike of the double outer-single inner circle
Spreckelsville AUG 25, 1898 cds

Spreckels died in San Francisco on 26 December 1908.

Arn Philatelic Symposium

The 29th John D. Arn Philatelic Symposium will take place on 6 April 2019, at the Best Western Plus Lake Front Hotel located in Moses Lake, Washington. The Northwest Federation of Stamp Clubs supports this event by paying for the rental of the conference rooms.

The purpose of the symposium is to bring together philatelists from around the Pacific Northwest for discussions, presentations, auctions, and a good time. Excellent meals are included with the registration at reasonable prices and more than \$1,400 worth of philatelic items will exchange hands at the auction.

The event will feature four outstanding speakers with a variety of philatelic experience and collecting interests. They are Ina Inklebarger from a well known stamp dealer team; Myron Molnau, former Treasurer of the American Topical Association; Lisa Foster, President of Women Exhibitors; and Richard Sola, an outstanding northwest historian and professional speaker.

On Friday evening, there will be a no-host dinner at a local restaurant. On Saturday, together with the presentations, there will be both a silent and a live auction.

More information along with a registration form will be mailed in mid-January. The program and registration form will also be available on the Northwest Federation website (www.nwfedatamps.org).

**Seattle
Philatelic Exhibition
SEAPEX 2019**

**an APS-accredited
NATIONAL Stamp Exhibition**

50th Anniversary



First Man on the Moon

**FREE PARKING
FREE ADMISSION**

**30 Stamp Dealers
200 Frames of Exhibits
Scandinavian Collectors Club
UNPA Postal Booth
Scout Merit Badge Seminar
Show Cachet and Cancellation
What's in Your Attic Evaluations
Free Stamps for Youth/Educators**

September 13–15, 2019

Fri. 10AM–6PM
Sat. 10AM–5PM
Sun. 10AM–4PM

**Tukwila Community Center
12424 42nd Avenue South
Tukwila, Washington**

<http://www.seapexshow.org>
Facebook: Seapex: Seattle Philatelic Exhibition

Save the Salish Sea

— by Laurie Anderson & Lisa Foster, Evergreen SC

This past summer New York City artist Fredericka Foster taught a course at the Seattle Artists League, “Art, Activism and the Salish Sea.” At the end of the course an exhibition was held that was open to all artists. The “Salish Sea Show” was held in September 2018 with 25 contributing artists, with a percentage of proceeds from sales donated to filmmaker Alan Honick to create an environmental documentary.

We were asked to create a philatelic exhibit for the show. We thought, “Sure how hard could that be?” Well it turned out to be difficult to find philatelic items about environmentalism, and items specific to the Salish Sea (combined waters of Georgia Strait, Puget Sound, Strait of Juan de Fuca).

We searched through boxes at stamp shows, asked dealers, looked online, and so on. Oh, did we mention we had two months’ notice, and it is not a topic either of us previously collected? After we found enough philatelic items to make a one frame exhibit, we had to categorize them in order to develop a plan. The exhibit plan was brief using an acronym, “SAVE” (Salish Sea, Alive, Vulnerable, Enduring).



Laurie & Lisa with Salish Sea exhibit

Section 1. “Salish Sea” introduced the sea life, habitat, species of fish, sea birds, and marine animals of the area.

Section 2. “Alive” gave an overview of the area’s commercial, recreational, and tourism industries. We also explored water, which is the foundation of all that is alive in the Salish Sea.

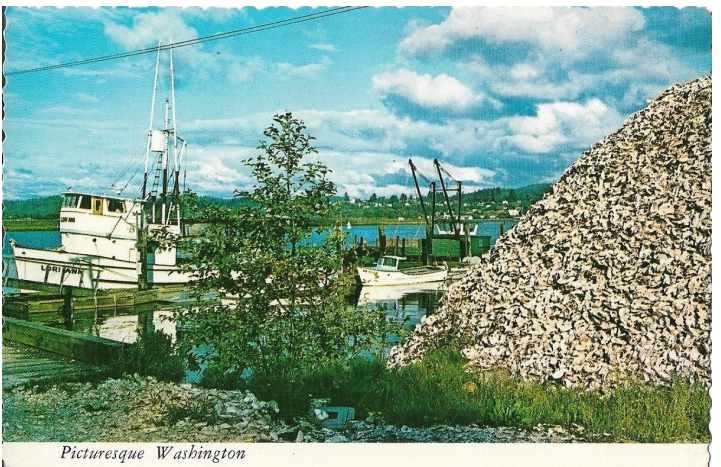
Section 3. “Vulnerable” exposed threats to the well being and continued survival of the Salish Sea, including toxic storm water runoff, agricultural pollution, oil spills, coal dust, vessel traffic, organic matter, plastics, other pollutants, dams, and highways (versus fishways).

Section 4. “Enduring” provided hope and suggestions for what we as individuals can do to reduce vulnerabilities and recover the Salish Sea.

It was a fun exhibit to create, to tell a story without having to follow philatelic rules or exhibit to the judges. Many non-philatelists enjoyed the exhibit and were amazed that these topics were on postage stamps. This shows that we should create opportunities to exhibit outside of the normal confines of stamp shows. Who knows? You may find your next stamp buddy.

The Salish Sea is an intricate system of waterways stretching from British Columbia, Canada, down to Washington State. It includes the Strait of Georgia, the Strait of Juan de Fuca, and Puget Sound. These waterways merge salt water and freshwater to create a unique coastal environment, supporting a huge marine life (211 fish species, 100 species of sea birds, and 13 marine mammals). We rely on Puget Sound for healthy food, recreational opportunities, and a large part of our local economy.

As one of the leading producers in the country, Washington State’s shellfish industry brings in more than \$100 million in sales every year.



Picturesque Washington

Since 1980, more than 30 percent of the Salish Sea’s shellfish growing area has closed due to polluted water. An analysis of mussels from Elliot Bay revealed traces of oxycodone, an opioid pain medication, along with a number of other pharmaceuticals. It is a reminder that what we consume on land ends up in the waters of Puget Sound.

The state’s annual \$147 million commercial and recreational fishing industry as well as the state’s \$9.45 billion tourism industry, both built around the Sound, are threatened by exposure to toxins and pollutants.



Save the Salish Sea (from page 8)

Overfishing plays a leading role in the decline of vulnerable fish populations such as rockfish and invertebrate species such as Northern Abalone. Derelict fishing gear also poses a threat to marine birds that can easily become entangled and drown.

Salmon are an iconic species of the Salish Sea. They play a critical role in supporting and maintaining ecological health. Salmon provide food to a variety of wildlife: bald eagles, killer whales and grizzly bears.

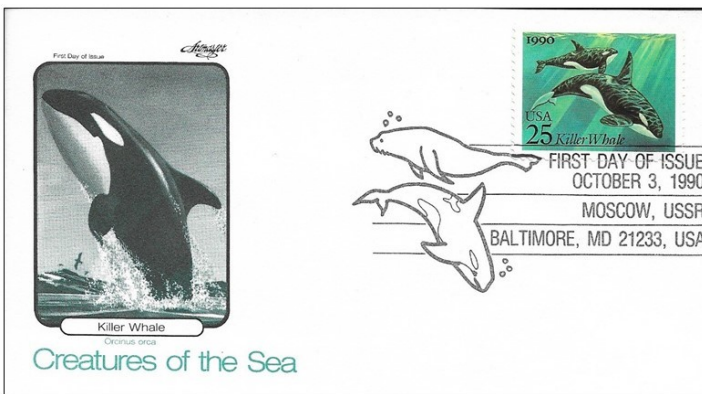


Salmon die after spawning and their carcasses provide food and nutrients to plants and animals.

Due to the increased levels of pollution, their diets have elevated levels of toxic chemicals. One third of all the copper in the Salish Sea comes from pesticides and fertilizers. Copper makes it hard for salmon to avoid predators and to find their way back to their spawning streams. Fish migration is also impeded by state highways that cross streams and rivers in thousands of places in Washington.

Marine mammals of the Salish Sea include orcas, sea lions, sea otters, gray whales, humpback whales, and harbor seals. Harbor seals are the most abundant marine mammal in Puget Sound and are seven times more contaminated by toxic chemicals than the harbor seals in Canada's Strait of Georgia, which adjoins the Sound.

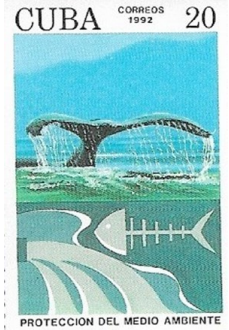
Stellar sea lions are found mostly in northern waters in our region and are listed under the Endangered Species Act. Underwater plants provide food for sea otters with twenty-six species of kelp as a main source of food. The sea otter was listed as a state endangered species in 1981. Oil spills are their single greatest anthropogenic threat.



Orcas, also known as killer whales, are highly intelligent, physically powerful and follow highly complex social structures. The largest member of the dolphin family, they are considered an alpha predator. Their population decline of 20 percent from 1995 to 2001 is a reflection of the

problems facing the greater Puget Sound marine and watershed ecosystems, which include declining salmon runs, PCB contamination, and habitat loss.

Orcas in the Puget Sound are considered to be the most PCB-contaminated mammals on earth. More than one million pounds of toxic chemicals made their way into Puget Sound from surface runoff, groundwater discharge, and city wastewater outfalls.



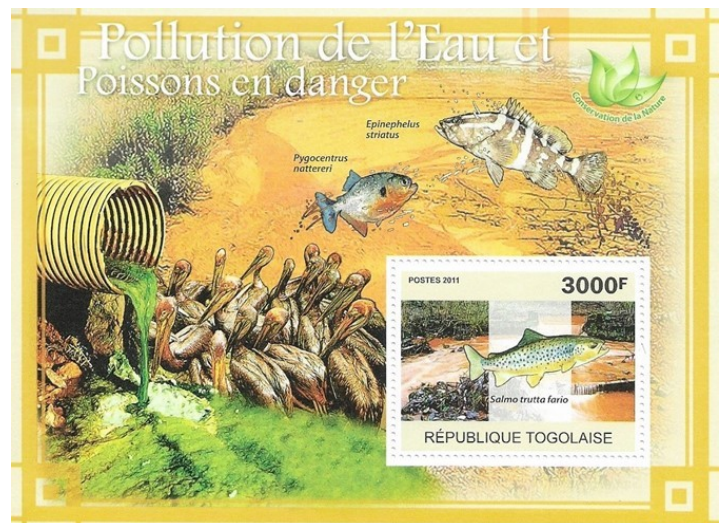
Water quality is the foundation for all plants and animals that depend on the Salish Sea—from algae to fish to marine mammals. The amount of gaseous oxygen dissolved in water is a key component in this foundation. The dissolved oxygen level in the Salish Sea is declining, which is making aquatic life more vulnerable to pollution and other impacts from people.



Organic matter from natural and human-made sources (such as discharges from waste water treatment plants, septic systems and pet waste) lowers oxygen levels in water. Puget Sound is a “no discharge zone,” which prohibits boats from discharging raw sewage.

On average, more than 52,000 pounds of pollutants are released into the Puget Sound ecosystem each day. Every year more than 9,600 pounds of plastic additives are discharged from sewage treatment plants in the region.

In the Puget Sound, there are 21 watersheds (an area of land that contains a common set of streams and rivers that all drain into a single larger body of water).



Save the Salish Sea (from page 9)

In 2008, 549 streams and rivers that were tributaries to Puget Sound carried poor water quality from storm water and toxins. Poor water quality is the biggest threat to the Salish Sea. Storm water runoff is Washington State's largest source of water pollution.

The most common pathway for toxic chemicals to reach Puget Sound is through polluted storm water runoff in developed areas.

An estimated 140,000 pounds of chemicals enter the Puget Sound on an average day. Close to one third of Washington's waters do not meet state water quality standards due to pollution from storm water runoff. A one acre area of pavement produces 27,150 gallons of runoff for every one inch of rain. In Seattle, with about 37 inches of rain per year, that equals one million gallons of runoff.

Washington State is a high-risk area for oil spills due to oil transporting and processing. Oil spills are toxic and threaten sensitive environments along the Pacific Coast and Puget Sound. More than 15 billion gallons of oil are shipped annually through the waters.

In the past 30 years, Washington has experienced major spills and related incidents; refinery explosions, liquid fuel pipeline ruptures, oil tanker groundings, fuel transfer mishaps, and spills caused when commercial vessels sink or collide. Oil can coat an animal's fur or feathers leading to hypothermia or loss of buoyancy in water.

Energy Development also poses risks to the Salish Sea. The Grand Coulee Dam has had the largest impact on the plummeting numbers of Columbia River Basin Salmon and steelhead. Removing the four lower Snake River dams and restoring a free-flowing river may help ensure a healthy, sustainable future for wild Pacific salmon and communities that depend on them.

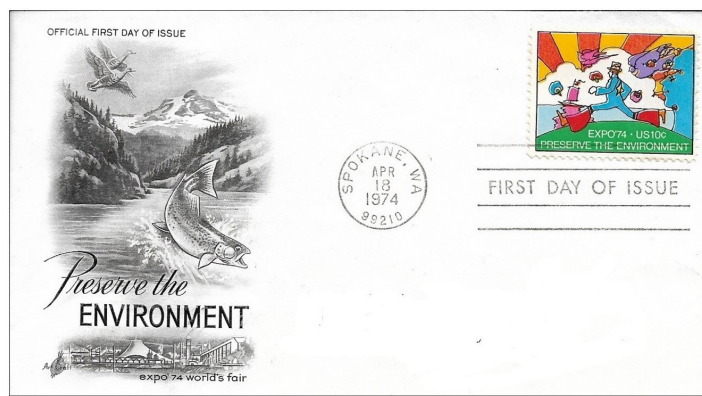
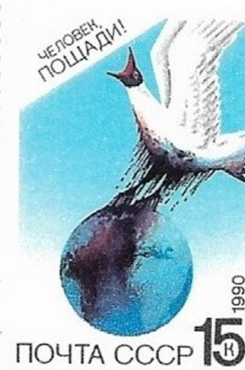
Uplands are critical for the long term protection of the water quality downstream. US forests store 14 percent of all annual carbon dioxide emissions through photosynthesis. Forests filter and regulate the flow of water, in large part due to their leafy canopy that intercepts rainfall, slowing its fall to the ground, decreasing toxic stream runoff. The

needles of evergreen trees in Washington's forests can hold as much as 40 percent of the rain from a light rainfall.

Groundwater contamination and runoff is a problem for all of us, and each one of us is the solution. Go pesticide-free in your lawn and garden. Add a rain garden to your yard to help treat storm water runoff.

Try rain barrels and take advantage of our weather. Shop wisely, being on the lookout for toxic flame retardants, phthalates, and perfluorinated chemicals. Discard your medicines safely. Washington State has collection centers, or you can mix them with coffee grounds or cat litter and put them in the garbage.

Take your old boat to the dump and report abandoned boats. Check your car for oil leaks—3.5 million quarts of oil enter Puget Sound every year. Use a commercial car wash, or self-service location. They filter and re-use the water. Skip the fancy coating with toxic chemicals.



The artists who attended the class collaborated to create a book, *Artists Celebrate the Salish Sea, a Collaboration*, which can be purchased for \$5 on Amazon.com with proceeds supporting the documentary film.

AMPEX

14 April 2019

Fraser Valley Stamp Club

W. J. Mouat School

32355 Mouat Drive

Abbotsford, British Columbia

Sun 10:00AM-3:30PM

Free Admission

Non-competitive Exhibits

Federation Meetings

The Board of Directors of the Northwest Federation of Stamp Clubs (NWFSC) held a meeting at 9:00 AM on Saturday, 15 September 2018, at SEAPEX. The purpose of the meeting was to discuss filling vacant board and committee positions and to conduct general business.

Attendees were Lawrence R. Crain, Executive Secretary; Eric R. Knapp, Chairman of the Board; J. Alex Hadden, Treasurer; George W. Struble, US Director, James J. Hirstein, US Director; Lawrence Clay, Past Executive Secretary; Jack Congrove; and James Bryan.

The first topic dealt with filling the second Canadian Director position on the Board. Dr. Darin P. Cherniwchan of Chilliwack, British Columbia, had agreed to serve in this position and was appointed to fill the slot until the next annual general meeting.

The organizers of VANPEX extended an invitation for the Federation Board to meet at their show. This show will be celebrating its 100th anniversary and will be held on 27–29 September 2019, at the Nikkei Centre in Burnaby, British Columbia. This offer fits nicely with the plan to hold meetings in the spring and fall and to alternate between the US and Canada. The Board postponed a decision.

The Board members discussed whether to provide the Federation Thunderbird ribbons for award only at shows of member clubs. A motion was made and seconded to offer one Thunderbird ribbon to non-member clubs, but to require Federation membership for any ribbons at subsequent shows. Motion carried.

The Board discussed filling the standing committee chairs: Nominations: In May, Lisa Foster said she would take the position, but she was unsure in July.

Judging: Dickson Preston said he would continue.

Youth: Vacant and seeking a volunteer.

Education, Development, & Advancement: Carol Edholm said no, feeling it was too big a job.

Publications: Jack Congrove will continue in this position.

The Board resolved to continue recruitment and encouraging people to work on these committees.

The Board discussed the training and certification of local and regional judges, but no decisions were reached.

Members discussed the content of the Federation website and determined additional information that should be posted, including: Federation By-laws, membership applications, committee listings and missions, Thunderbird ribbon criteria, and show prospectuses.

The Board resolved to place the updated By-laws on the website. The Federation website could also include either the prospectus itself, or a link to the member club's show

website where exhibitors can obtain one, depending on the wishes or capability of the member club.

The Board next discussed the contract with the Portland Philatelic Exhibition (PPE) for conducting the PIPEX show. The renegotiation of the agreement with PPE is coming up soon and the Board wants to be prepared. This was an alert measure and no decisions were reached.

The By-laws review group has started its review of the document last approved at PIPEX this year. There is agreement that some revisions are needed to shorten the document and clarify the verbiage in some sections.

The members discussed whether the Federation should purchase ads in the programs of the national shows in our region. These ads would help support the shows and at the same time publicize the events and activities within the Federation.

It was moved and seconded that the Federation buy a full page ad in the show program for every national show in the region. This ad will list clubs in the Federation, their upcoming shows, and the Federation website. Motion carried.

The Board discussed the need for a Communications committee to coordinate information. No decisions were made.

The Board discussed whether the Annual General Meeting and board meeting at PIPEX should continue to be held on Saturday, or switch to a different day. The decision was to keep the meeting on Saturday.

After discussion, the Board members agreed that the Federation town hall open forum held at PIPEX and SEAPEX is a good idea and determined to continue these meetings.

The meeting adjourned before 10:00 AM.

Larry Crain, Executive Secretary of the NWFSC, hosted a town hall meeting of the Federation at SEAPEX starting at 10:00 AM on Sunday, 16 September 2016.

Edmonton Spring Show
23–24 March 2019
Edmonton Stamp Club
Central Lion's Recreational Centre
113 Street & 111 Avenue
Edmonton, Alberta
Sat 10:00AM–5:00PM
Sun 10:00AM–4:00PM
WSP Exhibits
Free Admission
www.edmontonstampclub.com

A Handy Checklist of Scott Catalogue Prefixes

— by Clarence Chandler (Chan) Wright

[Ed. note: Chan Wright (1920–2002), of Eugene, Oregon, was also the major compiler of Linn’s Stamp Identifier, an original project of the Greater Eugene Stamp Society. The original of this article was published in *The Federated Philatelist*, Number 156, April 1998. Because most of our readers use this catalogue, I thought this listing would be a useful reference. I have revised and updated it to include additional entries Scott has produced since Wright assembled this list (including the “R” series). This list does not include all the many suffix letters that also exist.]

The *Scott Catalogues* list stamps and related items under each country by functional classes. In the Introduction to the 1998 Vol. 1, Scott lists 39 classes in addition to the “Regular” issues, and assigns a prefix for each. That is a lot of classes, right? Yes, but these are only the classes used by more than one country.

Over the past several years I have developed the following listing, which undoubtedly is incomplete. (Please note that Scott also uses letter prefixes followed by numbers to identify its stamp illustrations, and these prefixes may, or may not, agree with those used for the class of stamps.) I wonder whether Scott has a complete list. Note that the only “R” series included is the “RA” Postal Tax Series. There are about 30 other prefixes in the “R” Revenue Series.

A small, but interesting, collection could be made by trying to get at least one stamp in each of these classes.

—	Regular Issues
AR	Postal Fiscal
B	Semi-Postal
BK	Booklet Regular
BKC	Booklet Airmail
C	Air Post
CB	Air Post Semi-Postal
CBO	Air Post Semi-Postal Official
CE	Air Post Special Delivery
CF	Air Post Registration
CL	Air Post Semi-Official
CLEU	SCADTA Stamps
CM	Air Post Military
CO	Air Post Official
CQ	Air Post Parcel Post
CP, #CP	Commemorative Panel
CVP, #CVP	Computer Vended
CVPT	Machine Set-up and Test Labels
#CVT	Computer Vended, Test
CVUX	Computer Vended, Postal Card
D	Pneumatic Post
E	Special Delivery
EB	Special Delivery Semi-Postal
EO	Special Delivery Official
EP	Encased Postage
ER	Delivery Tax
EX	Personal Delivery
EY	Authorized Delivery
F	Registration
FA	Certified Mail
FX	Registry Exchange Labels

G	Insured Letter
GY	Marine Insurance
H	Acknowledgment of Receipt
I	Late Fee
IRC	International Reply Coupon
J	Postage Due
JQ	Postage Due, Parcel Post
JX	Porte De Mar
K, #K	Offices Abroad
KB	Offices Abroad Semi-Postal
L, #L	Local or Subsidiary Issues
#LB	Local or Subsidiary, Semi-Postal (US: Semi Officials)
#LC	Local or Subsidiary, Air Post
#LE	Local or Subsidiary, Special Delivery
LF	Local or Subsidiary, Registration
LH	Local or Subsidiary, Ack of Receipt
LJ	Local or Subsidiary, Postage Due
LO	Local or Subsidiary, Official (US: Carrier Stamps)
LOX	Post Office Seals, Typeset
#LP	Local or Subsidiary, Newspaper
#LU	Local or Subsidiary, Envelope
M	Military, Regular
MC	Military, Air Post
MQ	Military, Parcel Post
MR	War Tax
N, #N	Occupation, Regular
NB, #NB	Occupation, Semi-Postal
NC	Occupation, Air Post
NCE	Occupation, Air Post Special Delivery
NE	Occupation, Special Delivery
NJ	Occupation, Postage Due
NO, #NO	Occupation, Official
NP	Occupation, Newspaper
NRA	Occupation, Postal Tax
NSC	Numismatic Souvenir Cards
NU	Occupation, Envelopes
NUX	Occupation, Postal Cards
NUZ	Occupation, Postal Cards, Official
O, #O	Official
OX	Post Office Seals
OXA	Post Office Seals, Dead Letter Office
OXB	Post Office Seals, Dead Letter Office Return
OXF	Post Office Seals, Registry
OXSP	Post Office Seals, Sea Post
OY	Life Insurance
P	Newspaper
#P	Die and Plate Proofs
PC	Postage Currency
PN	Postal Note
PR	Newspaper and Periodical
PS	Postal Savings Stamps
Q	Parcel Post
QE	Special Handling
QI	Special Insurance Labels
QRA	Parcel Post, Postal Tax
QY	Parcel Post, Authorized Delivery
R	Revenue, Documentary and General
RA	Postal Tax, Regular Issues

Scott Prefixes *(from page 12)*

RAB	Postal Tax, Semi-Postal
RAC	Postal Tax, Airmail
RAJ	Postal Tax, Postage Due
RB	Revenue, Proprietary
RC	Revenue, Future Delivery
RD	Revenue, Stock Transfer
RE	Revenue, Cordials and Wines
REA	Revenue, Beer
REF	Revenue, Fermented Fruit Juice
RF	Revenue, Playing Cards
RG	Revenue, Silver
RH	Revenue, Cigarette Tubes
RI	Revenue, Potato Tax
RJ	Revenue, Tobacco Tax
RJA	Revenue, Narcotic Tax
RJM	Revenue, Marihuana Tax
RK	Revenue, Consular Service Fee
RL	Revenue, Customs Fee
RM	Revenue, Embossed Paper
RN	Revenue, Stamped Paper
RO	Revenue, Proprietary Match
RS	Revenue, Proprietary Medicine
RT	Revenue, Proprietary Perfumery
RU	Revenue, Proprietary Playing Cards
RV	Revenue, Motor Vehicle
RVB	Revenue, Boating
RVC	Revenue, Camp
RVP	Revenue, Park Pass
RVT	Revenue, Trailer
RW	Revenue, Hunting Permit
RX	Revenue, Distilled Spirits
RY	Revenue, Firearms Transfer
RZ	Revenue, Rectification
S	Franchise (US: Post Office Savings Stamps)
#S	Specimen Stamps
SC	Souvenir Cards
SP	Souvenir Pages
T	Telegraph Stamps
#TC	Trial Color Proof
TS	Treasury Savings Stamps
U	Stamped Envelopes & Letter Sheets
UC	Stamped Envelopes & Letter Sheets, Air
UCM	Stamped Envelopes, Military Air Post
UO	Stamped Envelopes, Official
UX	Postal Cards
UXC	Postal Cards, Air
UY	Postal Cards, Paid Reply
UZ	Postal Cards, Official
#V	Imperforate Coils
W	Stamped Wrappers
WO	Stamped Wrappers, Official
WS	War Savings Stamps
WV	Sanitary Fair Stamps
WX	Christmas Seals
X, #X	Provisional Stamps
#XU	Provisional Stamped Envelopes
Y	Revolutionary Issue
YF	Revolutionary Issue, Registration
YP	Revolutionary Issue, Newspaper
Z	Prefecture Stamps (Japan)

Closed Album: Larry Spray

Vale Larry Spray (1944–2018), Bourse Chair of PIPEX, passed away after a year-long battle with lung cancer on 14 October. He was a long-time member of the Oregon Stamp Society.

Survivors include his wife Julie; brother Ron Jagow; sons Chris and Tim; and grandchildren Chelsea, Cody, and Jacob Jackson.

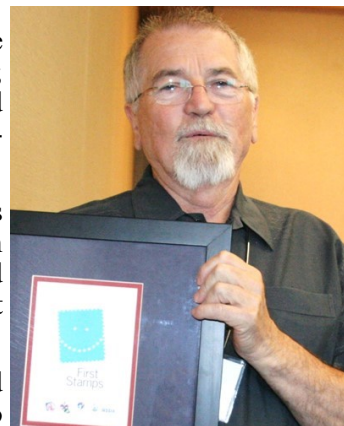
Larry spent much of his working career with Union Pacific as a yard master, and conductor for both freight and passenger trains.

He performed many behind the scenes jobs for the Metro and PIPEX shows in Portland. He was co chair of PIPEX 2009, which was held at the Double Tree by Hilton Hotel. Later, he was the floor manager, dealer liaison, and security manager for PIPEX after the show moved to the Red Lion on the River.

His main collecting interests were the Falkland Islands and King George VI. While not an exhibitor, he did make a page for the Oregon Stamp Society's club showcase exhibit for PIPEX, and SEAPEX 2017, his chosen letter "G" standing for King George VI. He also enjoyed reading, especially military history, and collecting antiques.

Over the years, Larry served on the boards of the Oregon Stamp Society, Northwest Philatelic Library, Portland Philatelic Exhibition, and First Stamps.

He received the Federation Member Club Service Award in 2015. His most recent accolade was a special award, given at PIPEX 2018 (above), in recognition for his work as floor manager, bourse chairman, and other services to philately.



Evergreen Spring Bourse

20–21 April 2019

Evergreen Stamp Club

Kent Commons Recreation Center

535 4th Avenue North

Kent, Washington

Sat 10:00AM–5:00PM

Sun 10:00AM–4:00PM

Free stamps for kids

Free Admission

www.stamps.org/Evergreen-Stamp-Club

VICPEX 2018

— by Neil Donen, Vancouver Island Philatelic Society & Peter Newroth, President, G.E. Wellburn Foundation

The Victoria fall stamp show (VICPEX) organized under the direction of Donald Shorting was, by all accounts, one of the finest shows in the past 20 years. All fourteen exhibits, including ten exhibits by eight local exhibitors, garnered Gold Awards. Comments on the quality and variety of exhibits were uniformly positive.



Donald Shorting received the Gerald E. Wellburn Trophy given to the best exhibit demonstrating originality, innovation, or pride for “Vancouver Island Split Ring Cancels.” Shorting also won the Lester Small Trophy presented to the best exhibit of foreign material for “Censor Tapes of African Countries during World War 2.”



Don Shorting receives congratulations from Cathie Osborne

Hal Kellett received the William Sach Trophy presented to the best exhibit of Canadian material for “British Commonwealth Air Training Plan.”



Hal Kellett mounting his exhibit with Allen Wiseley

Brian Plain won the Clarke Horning Trophy given to the best postal history exhibit for “Via Siberia.”

Peter Newroth received the Eric Hamber Trophy presented to the best exhibit by a Vancouver Island Philatelic Society (VIPS) member for “1860–1863 Decimal Stamps of New Brunswick.” This exhibit also won the Best British North America (BNA) Exhibit award.



Peter Newroth & Ed Kroft

Neil Hunter won the Best BNA Two-to-Four Frame Award for “Airmail to Eastern Canada’s Gold Fields (1924-1926).” Hunter also received the Best BNA One Frame Award for “Eastern Canada Airmail Routes (1927-1928).”

Robert Stock received the Centennial Trophy given to the best exhibit of Commonwealth/Empire material for “Transportation, Postal Services, and Development in Blenheim Township.” This exhibit also was awarded the Best Researched BNA Exhibit.

John Pollard won the Frank Dymont Memorial Trophy given to the best exhibit by a Greater Victoria Philatelic Society member for “Pan Am Test Flight of 1946.”

An important part of the show was the accompanying bourse. Feedback from both dealers and buyers indicated that all were very happy. The only “complaint” I heard was, “I wish I had more money to spend. It was all so good!” Congratulations to Donald Shorting and his helpers who did yeoman work in making this show the great success it was.

VICPEX 2018 *(from page 14)*

Concurrent with the show were regional meetings of three philatelic groups: the British North America Philatelic Society (BNAPS), Philatelic Specialists Society of Canada (PSSC), and The Royal Philatelic Society London (RPSL). Each group presented some wonderful talks. Many of these PowerPoint presentations are, or will shortly be, posted to the VIPS website (www.vicstamps.com/vips). Included are accompanying reports from the three organizations.



Bill Bartlett at the Wellburn Foundation table

Additionally, the Wellburn Foundation had a table outside the bourse manned by Bill Bartlett, the Foundation Secretary-Treasurer, and it garnered a lot of enquiries.

Decorated for Halloween, all who stopped by the table were rewarded with “treats.” Before the show, Bartlett made 600 packs of stamps to hand out and added another 170 while at the table. He estimated that he gave out about 600 packs, mostly in groups of ten, for sharing with (mainly young) folks when Halloween arrived.

The Wellburn Foundation is named for Gerald E. Wellburn (1900–1992) and was established in 1992 from capital funds donated by Wellburn to promote stamp collecting on southern Vancouver Island.

Wellburn was a noted philatelist and exhibitor who received many accolades, not least of which was being named as a charter recipient of the Northwest Distinguished Philatelist award in 1960. It is notable that he was also the Grand Award winner of the very first PIPEX show in 1936.

The “profits” from the BNAPS meeting have been donated to the Wellburn Foundation, a wonderful gesture indeed.

Annual Dues and Report Notice

The Treasurer will be sending out notices this month to each member organization about annual dues payment and club report submissions. Dues are fixed in US dollars, but the notice for the Canadian members will show the equivalent value in Canadian currency. The Federation can accept payments in either currency.

Here are the dues amounts in US dollars. The Canadian equivalent will be calculated based on the exchange rate and listed in the notice letter. The membership quantity is based on the average membership throughout the year.

More than 50 members	\$25.00
26–50 members	\$20.00
11–25 members	\$15.00
1–10 members	\$10.00

Payments are due to the Treasurer no later than 31 March 2019.

Member organizations are also required to submit an annual report to the Treasurer no later than 31 March 2019. The Treasurer will send a form for this with the notification, but there is also a fillable form on the Federation website (www.nwfedstamps.org).

These reports are essential for the Federation to maintain current contact information for each of its members. Please do not disregard this request.

Long Time Publisher Closing

Washington Stamp Exchange of Florham Park, New Jersey, a fixture of the stamp hobby for 85 years, is closing its business at the end of 2018.

The decision was announced in a 19 October press release. The company discontinued its ArtCraft first day cover (FDC) line at the end of 2015, citing decreasing sales and high production costs. The company reported that it intends to sell everything in its stock “at steeply discounted prices,” including FDCs (ArtCraft), albums (White Ace albums and pages) and supplies (StampMount).

The company is offering products through its website (<http://www.washpress.com>).

PIPEX Events Planned

The Northwest Federation of Stamp Clubs was established in 1935 to sponsor an annual stamp exhibition. The 2019 Pacific International Philatelic Exhibition (PIPEX) will be held on 10–12 May at the Red Lion Hotel on the River at Jantzen Beach. The hotel is located at 909 North Hayden Island Drive in Portland, Oregon.

Parking and admission are free. The hotel is offering a special room rate of \$105 per night for persons who pre-register. Show hours are 10:00 AM to 6:00 PM on Friday and Saturday, and 10:00 AM to 4:00 PM on Sunday.

This year, the show theme will commemorate the centenary of Prohibition. Hopefully, they will not put this rule into practice at the event.

Three societies will be holding their conventions this year at the show: American Revenue Association, State Revenue Society, and Pacific Northwest Postal History Society.

Harmer-Shau Auctions NW will conduct an auction at the show on Sunday. Uptown Stamp Show is the official corporate sponsor.

At least 40 dealers are expected to attend. There will be 3,800 pages of philatelic exhibits to interest visitors.

For the exhibitor prospectus and entry form, see the show website (www.pipexstampshow.org). The deadline for convening society application preference is 20 February. The deadline for all exhibit applications and updated title pages and synopses is 1 April.

PIPEX is a World Series of Philately national exhibition.

Call for Officer Nominations

The By-laws of the Northwest Federation of Stamp Clubs call for the election of two Directors and one Officer each year on a staggered basis. This election takes place at the Annual General Meeting held each year usually in conjunction with PIPEX.

The Federation has three Officers and four Directors. The Officers are Executive Secretary, Chair of the Board of Directors, and Treasurer. Each Officer serves a three year term and each Director serves a two year term. The terms are staggered among the positions in order to provide continuity of leadership.

At the next meeting, the Executive Secretary position is up for election and the Director positions currently held by James J. Hirstein and Darin P. Cherniwchan are up for election.

Nominations for these positions are due to the Nominations Committee or Executive Secretary no later than 10 February 2019.

UPCOMING SHOWS

ARIPEX-AmeriStamp Expo

February 15–17

Mesa Convention Center, Mesa, AZ

APEX 2019

March 1–3

Anchorage Senior Activities Center, Anchorage, AK

Willamette Valley Stamp Exhibition

March 16 & 17

St. Jude's Catholic Church, Eugene, OR

Scottish Rite Center, Salem, OR

Edmonton Spring National

March 23–24

Central Lions Recreation Centre, Edmonton, AB

PIPEX 2019

May 10–12

Red Lion Hotel on the River, Portland, OR

Call for Award Nominations

The Northwest Federation of Stamp Clubs offers three levels of awards for individual contributions to philately, or support for philately at various levels. Now is the time to submit nominations for these awards that will be presented next year at the annual PIPEX show in May.

According to the Federation By-laws, these nominations must be submitted to the Executive Secretary no later than 10 January 2019.

The **Northwest Distinguished Philatelist Award** is for rendering outstanding and distinguished service to philately in general in areas of research, collecting, and furthering philately on a national scale.

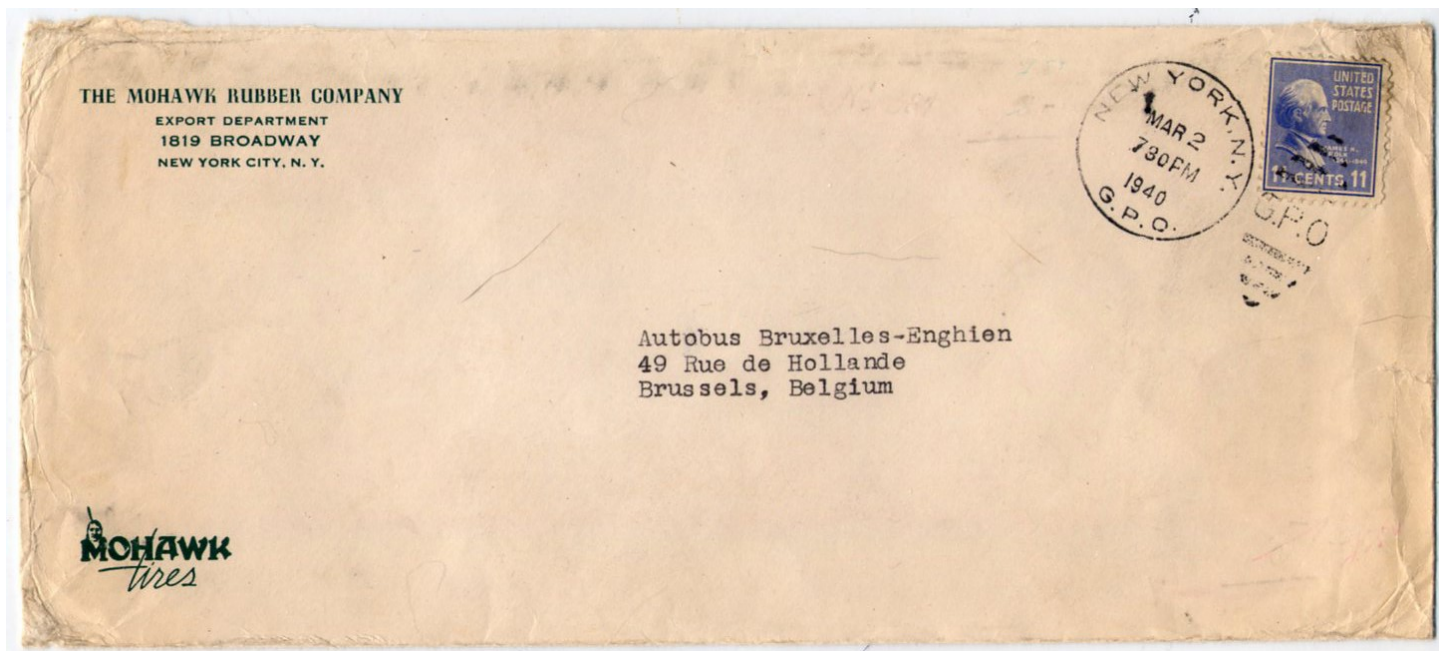
The **Federation Meritorious Achievement Award** is for rendering outstanding and distinguished service directly to the NWFSC and its member organizations.

The **Member Service Award** is for providing distinguished service, primarily to a member organization or group of member organizations.

Send the name of your nominee and a description of their contributions and reason for the nomination to the Executive Secretary at the address on page 2.

For complete criteria and further information, see Section XIII of the Federation By-laws, a copy of which you can find on the Federation website (www.nwfedstamps.org).

Prexie Cover



— by Louis Fiset, Puget Sound Collectors' Club

The cover illustrated here contained business correspondence to Brussels and bears a solo 11-cent Prexie paying the three ounce international letter rate of 11 cents (5¢+3¢+3¢). Solo usages of this denomination are scarce. Note the ragged edges validating the weight of the contents.

The item was postmarked 2 March 1940. At this time, World War II was seven months old, but German forces had not yet undertaken additional land invasions since it conquered Poland at the outbreak of the war. The period between September 1939, and May 1940, is known as “The Phony War.”

The next day, 3 March, Hitler finalized the date for the invasion of Norway and Denmark. On that same day, Soviet Union troops began attacks on Finland's second city, and eight days later concluded an armistice between the two countries.

Despite the war going on, this cover bears no evidence of censorship. At this time, the regular route of ordinary mail to Belgium went through Great Britain or France. Both countries were censoring mail at that time, although not at a 100 percent rate.

More, in mid-January 1940, British censorship established a Bermuda censor station to examine air and surface transatlantic mail. However, censorship activity was sporadic until mid-1941, and during that time, examiners focused primarily on air mail. Thus, it is not surprising this early war cover escaped examination.

German armies invaded the low countries on 10 May 1940, bringing an end to the so-called Phony War. For a

brief time mail from the U.S. to Belgium was suspended, but then resumed until Germany declared war on the U.S. on 11 December 1941.

The Belgian government returned to power on 8 September 1944, after the liberation of Brussels by Allied troops four days earlier. Resumption of mail (postal card) service to Belgium began on 23 November 1944.

APS and ATA Joint Show

Even before the success of this year's joint show put on by the American Philatelic Society and the American Topical Association, the two largest philatelic organizations in the US, they were planning another joint show in 2019.

The APS StampShow and National Topical Stamp Show will be held at the CHI Health Center convention center in Omaha, Nebraska, on 1–4 August 2019. The convention hotel is the Hilton Omaha.

The theme of the show will be “Trains” and will celebrate the 150th anniversary of the completion of the first transcontinental railroad. If it is anything like this year's show, there is sure to be lots of special railroad-related events.

Expect the USPS to release some new stamps at the show as well.

The two groups are partnering with several other organizations including Union Pacific Railroad, Offutt Air Force Base, Boys Town, and the National Postal Museum to provide special opportunities for show attendees.

Keep your calendars free for these dates.

Club Activities



The **Alaska Collectors' Club** first joined the Federation in 1978, but dropped out in 1980, and did not rejoin until 2016. They publish a quarterly journal, *The Alaskan Philatelist*. They are working on a project to revise the *Postmarks of Territorial Alaska* catalog. Annual dues are \$15 for US members and \$20 elsewhere. Contact eknapp@gci.net. See website www.alaskaphilatellic.org.



The **American Air Mail Society—Northwest Chapter** joined the Federation in 1983, and has been a continuous member since then. They publish a quarterly newsletter *Air Mail Northwest*. The chapter has no website. Dues are \$8 per year for print and \$4 for electronic.



The **Anchorage Philatelic Society** joined the Federation in 1963, and has been a continuous member since then. They publish a quarterly newsletter, *The Anchorage Philatelist*. Their State Fair covers sold out. They are now planning for their APEX show on 1–3 March. They meet on the second and fourth Wednesday at the Turnagain United Methodist Church. Dues are \$10 per year, \$15 for families, and \$2 for youth. See their website www.anchoragephilatellic.org.



The **British Columbia Philatelic Society** is a Charter member of the Federation that joined in 1936, and has been a continuous member since then. They have not published a recent edition of their newsletter. They held their annual VANPEX on 28–29 September. Meeting information is distributed via their website. Meetings are each Wednesday at 7:30 PM at the church hall north of the West Burnaby United Church. The third Wednesday is usually their monthly auction. Dues are \$20 per year for individuals, \$30 for families, and \$7.50 for students younger than 18. Website: www.bcphilatellic.org.



The **British North America Philatelic Society** (Pacific Northwest Regional Group) joined the Federation in 1998, with one short break since then. They publish the *West Coast Express*. In our area are the Calgary, Edmonton, and Pacific Northwest chapters. The PNW Chapter publishes the *British Columbia Postal History Newsletter*. Dues are \$10 per year for all. See their website: <http://bnaps.org/regional.php>.

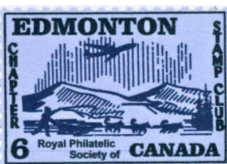
The **Central Oregon Postal Collective** joined the Federation in 2016. They do not publish a newsletter. They meet on the first Saturday at 10:00 AM at the Redmond Karate

Studio. They accept donations in lieu of dues. Contact stbucknum@msn.com.



The **Collectors Club of Seattle** joined the Federation in 1954, and has been a continuous member since then. They publish a quarterly newsletter. They do not have a website. They conducted their 750th club auction on 7 September. They meet on the first Friday each month at 8:00 PM at the Unity Church, 16330 NE 4th Street, Bellevue, Washington. They hold a well-organized auction at each meeting. Dues \$20. Contact hstamps1@frontier.com.

The **Eagle Stamp and Postcard Club** first joined the Federation in 2003. It dropped out in 2006, and rejoined in 2015. They do not publish a newsletter. They hold auctions about four times per year. They meet on the first Tuesday each month at 7:00 PM at the Eagle Methodist Church. No dues listed. See their website: <http://www.eaglestampandpostcardclub.com/>.



The **Edmonton Stamp Club** first joined the Federation in 1963. They dropped out during several spans since then and most recently rejoined in 2009. They publish a monthly newsletter, *Bulletin*. Each edition is full of interesting news and articles. They are planning their national show for 23–24 March. They meet on second and fourth Mondays at 6:30 PM at St. Joseph High School. Dues are \$30 per year for individuals, \$40 for families. There is a one-time \$5 fee for a name tag. See www.edmontonstampclub.com.



The **Evergreen Stamp Club** joined the Federation as the Boeing Employees Stamp Club in 1976, and has been a continuous member since then. They publish a monthly newsletter. They are planning their Christmas party for 19 December. They meet on the third Wednesday each month at 7:00 PM at Kent Commons. Dues are \$20 per year. See <http://stamps.org/Evergreen-Stamp-Club>.

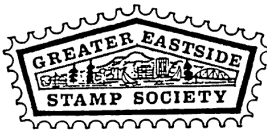
The **Fraser Valley Philatelic Club** first joined the Federation in 1968, but dropped out in 1971. They rejoined in 2017. They do not publish a newsletter. Subject to school availability, they meet on the third Tuesday of September and on the second Tuesday each other month (except July and August) at 6:00 PM at the W.J. Mouat School in Abbotsford. Annual dues are \$5. See their website at <http://stampclub.ca/fraservalley/>.

The **Garden City Stamp Club** first joined the Federation in 1972, and dropped in 1994. They rejoined in 1999, and with a couple short breaks, have been a member since then. They do not publish a newsletter. They meet on the first Wednesday and third Monday each month at 7:00 PM

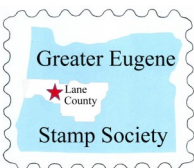
Club Activities (from page 18)

at the Atonement Lutheran Church in Missoula. Annual dues are \$10. See their website at <http://gardencitystampclub.com/>.

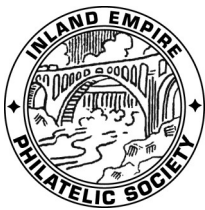
The **Gastineau Philatelic Society** first joined the Federation in 1964, dropped in 1967, and rejoined in 1974. They do not publish a newsletter. They meet on the third Thursday each month at 7:00 PM at 360 Egan Drive, Juneau.



The **Greater Eastside Stamp Society** publishes the *GESS Newsletter* via e-mail only. They meet on the first and third Thursday each month at 7:00 PM at Unity Church of Bellevue preceded by dinner at a selected local restaurant.



The **Greater Eugene Stamp Society** first joined the Federation in 1980, dropped in 1984, and rejoined in 2003. They publish the *Echoes* bimonthly newsletter, although I have not received a copy since January. They meet on the second and fourth Wednesday each month at 7:00 PM at Saint Jude's Catholic Church. Dues are \$15 and \$5 for youth. See: <http://greatereugenestampclub.weebly.com/>.



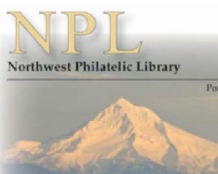
The **Inland Empire Philatelic Society** is a Founding member of the Federation that joined in 1935. They dropped out in 1941, and rejoined in 1952. They publish *The Lilac Hinge*. They held elections on 27 November. They plan to have their annual holiday dinner on 11 December.

They meet on the second and fourth Tuesday each month at 7:00 PM at the Spokane Valley Eagles Hall. Dues are \$10 per year for individuals, \$15 for families, and \$5 for youth under 18. See their website: www.ieps-stamps.com.

The **Linn County Philatelic Society** joined the Federation in 2012. They do not publish a newsletter, nor have a website. They meet on the second Thursday each month at 7:00 PM at The Villas.

The **Lynden Stamp Club** joined the Federation in 2017. They do not publish a newsletter nor have a website. They meet at 6:00 PM on the last Tuesday of each month at the Lynden City Hall. Dues are \$10 per year.

The **Lynn Valley Stamp Club** is our newest member. They do not publish a newsletter nor have a website. They meet from 1:00 PM to 3:30 PM on the second and fourth Wednesday of each month at the Molly Nye House in North Vancouver, BC. Dues are \$20 per year.



The **Northwest Philatelic Library** joined the Federation in 2005. They publish a quarterly newsletter, *Book Reports*. You do not need to be a member of the NPL or OSS to use the library. Hours

are 10 AM to 2 PM on second and fourth Saturdays, and 6:30 PM to 8 PM on second and fourth Tuesdays. Dues are \$12 for those 18 and older, \$3 for under 18. See their website: <http://www.nwpl.org/>.

The **Northwest Stamp Dealers Association** joined the Federation in 2002. It is a private organization of stamp dealers operating in the Pacific Northwest region. Contact mjaffe@brookmanstamps.com.

The **Okanagan Mainline Philatelic Association** first joined the Federation in 1960, dropped in 1987, and rejoined in 1996. They publish the *OMPA News*. Their next annual general meeting and elections will be on 26 January in Lake Country. They meet five times a year in January, March, May, September, and November. There are member clubs in Kelowna, Penticton, and Vernon. Dues are \$10 per year, \$14 for Family, and \$2 for Junior (under 16). See: <http://www.okanaganstampclubs.ca/>.

The **Olympia Philatelic Society** first joined the Federation in 1955, dropped in 1988, and rejoined in 2012. They publish an electronic newsletter. They held their Roundup Stamp Show on 13 October in Chehalis. They meet at 7:30 PM on the second and fourth Monday each month at the Olympics West Retirement Inn. Dues are \$10 per year. See website at: <http://olympiaphilatelicociety.org/>.

The **Olympic Philatelic Society** joined the Federation in 1953, and has been a continuous member since then. They do not publish a newsletter, nor have a website. They meet at 6:30 PM on the fourth Tuesday each month at the DK Enterprises store, 10 NE Silver Pine Drive, Bremerton.



The **Oregon Stamp Society** joined the Federation in 1937, and has been a continuous member since then. They publish a monthly newsletter, *The Album Page*. Each edition has an article on the featured cover of the month.

They are planning their holiday party on 11 December. Meetings are on the second and fourth Tuesday each month at their clubhouse. Dues are \$24 per year for regular members, \$16 for associate members who reside outside the area. Website: www.oregonstampsociety.org.

The **Pacific Northwest Postal History Society** joined the Federation in 2001. They publish a quarterly journal, *The Oregon Country*. Each issue has articles with nice illustrations of NW postal history material. Dues are \$20 per year. Their website currently appears to be inoperative.

The **Peace Arch Stamp Club** first joined the Federation in 1983, dropped in 1986, and rejoined in 2014. They do not publish a newsletter. They meet at 5:00 PM on the first Wednesday of the month (except July and August) at the Surrey Come Share Society Centre. Dues are \$20 per year. See their website: www.peacearchstampclub.com/.

Club Activities *(from page 19)*

The **Portland Philatelic Exhibitions** joined the Federation in 2016. They plan, organize, and conduct the annual PIPEX exhibition on behalf of the NWFSC. It is an Oregon nonprofit corporation that has no members, but is administered by a board of directors. Website: www.pipexstampshow.org.

The **Puget Sound Collectors' Club** first joined the Federation in 2004, and has had a couple breaks in membership since then. They do not publish a newsletter, nor have a website. Membership is by invitation. Members bring interesting philatelic items to discuss or resolve a mystery. Anyone interested in joining the club should contact the Secretary, Thomas Mathiesen, via email at: mecopost@earthlink.net.

The **Regina Philatelic Club** joined the Federation this year. They publish a quarterly newsletter, *Regina Philatelic Quarterly*. They meet on the first and third Wednesday of the month from September to May at 7:30 PM in the staff room at the Campus Regina Public School. Dues are \$10 per year. Website: <https://reginastampclub.ca/>.



The **Salem Stamp Society** first joined the Federation in 1941, but dropped during the war and rejoined in 1948. They publish a monthly newsletter, *Willamette Stamp & Tongs*. They held a workshop on 18 October to help new exhibitors prepare for their show next March. They held elections on 14 November. They meet on the second Wednesday each month at 6:00 PM at Fire Station District #1. Dues are \$10 per year for individuals, \$15 for couples, and \$5 for youth. Website: www.salemstampsociety.org.



The **Sno-King Stamp Club** joined the Federation in 1963. They publish a monthly newsletter, *Sno-King Stamp Club Philatelic News*. They are planning their annual holiday party, but no date is set. The club meets in Everett on the second Wednesday each month. Meetings in Edmonds are on hold until further notice. Dues are \$10 per year, \$5 for youth under 18. <http://sno-kingstampclub.freehostia.com>.



The **Southern Oregon Philatelic Society** joined the Federation as the Southern Oregon Stamp Club in 1955. They publish a monthly newsletter, *The Philatelic Reminder*. They have added a website. They are planning their annual holiday party for 6 December. They meet on the first Thursday at 7:00 PM at the First Methodist Church in Medford. Dues are \$15 per year. Website: www.stamps.org/sops.



The **Strait Stamp Society** joined the Federation in 1977. They publish a bi-monthly newsletter, *Strait Stamp Talk*. They meet on the first Thursday each month at 6:00 PM at the Sequim Library. They also hold an informal mid-month morning meeting at the local Burger King. The club has no dues, but accepts donations. Website: www.straitstamp.org.

The **Tri-Cities Stamp Club** joined the Federation in 1961, dropped in 1991, and rejoined in 1996. They publish a monthly newsletter, *The Triangle*. They meet on the fourth Wednesday at 7:00 PM in the Activities room the Royal Colombian Retirement Inn in Kennewick. Dues are \$10 per year for adults, \$1 for students. Contact: randyvessey@hotmail.com.

The **Umpqua Valley Stamp Club** first joined the Federation in 1962, dropped in 1969, rejoined between 2004–08, and finally rejoined this year. They publish a monthly newsletter, *Umpqua Stamper*. They do not have a website. They meet on the third Monday each month except June, October, and December at 7:15 PM in the St. George Episcopal Parish Hall in Roseburg. Dues are \$10 per year. Contact: adams@mcsi.net.



USS Puget Sound Chapter 74 of the Universal Ship Cancellation Society joined the Federation in 1978. They do not have a chapter newsletter, but the Society publishes the monthly *USCS Log*. Annual dues are \$24 for US, \$45 international, and \$16 electronic delivery. See their society website at: www.uscs.org.



The **Vancouver Island Philatelic Society** is a Charter member of the Federation that joined in 1936, and has been a continuous member since then. They publish a monthly newsletter, *The Guideline*. They have a philatelic library for members. Meetings include a small auction. They are planning their Christmas party for 27 December. The club meets at 7:30 PM on the fourth Thursday each month at St. Aidan's Church. Dues are \$15. Website: www.vicstamps.com/vips.htm.



The **Washington State Philatelic Society** is a Founding member of the Federation that joined in 1935. They do not publish a newsletter nor have a website. They meet on the second and fourth Thursday of each month at 7:00 PM at the Gethsemane Lutheran Church in Seattle.

Quiz

On 18 February 2019, Canadians in our Federation region will celebrate Family Day. British Columbia used to celebrate it a week earlier, but this year they lined up with the other provinces. Yukon Territory celebrates Heritage Day on 22 February. The 18th also coincides with the celebration of Presidents Day in the US. The US holiday is a federal holiday, but the Canadian one is not. This quiz deals with both holidays.

- ___ 1. This province does not celebrate Family Day.
- ___ 2. Family Day is called Louis Riel Day in this province.
- ___ 3. Family Day is celebrated on other dates in two US states. This is one of them.
- ___ 4. This is one of five other countries that celebrate a Family Day.
- ___ 5. Traditional activity on Family Day.

- ___ 6. Presidents Day is called Lincoln's and Washington's Birthday in this state.
- ___ 7. This is read in the US Senate each year on Washington's birthday.
- ___ 8. This country also celebrates a Presidents Day for its chief executives.
- ___ 9. Traditional activity on Presidents Day.
- ___ 10. In this state, the third Monday in February does not have a specified holiday name.

(Bonus) The official name of the US holiday is not "Presidents Day." What is it?

(Answers on page 2.)



A



B



C



D



E



F



G



H



I



J

UPCOMING STAMP SHOWS / BOURSES

SHOW DATES			Major events in bold / PNW events in italic	Revised: 20 November 2018	
FRI	SAT	SUN	SHOW NAME	LOCATION	TYPE
	1-Dec	2-Dec	PENPEX (Sequoia Stamp Club)	Redwood City, CA	Show
		9-Dec	<i>Fenwick Stamp & Coin Show</i>	Renton, WA	Bourse
2019:					
	26-Jan		<i>Coin & Stamp Show (North Shore Numismatic Soc.)</i>	Burnaby, BC	Bourse
	26-Jan		<i>Okanagan Mainline Philatelic Association Show</i>	Lake Country, BC	Show
		10-Feb	<i>Fenwick Stamp & Coin Show</i>	Renton, WA	Bourse
15-Feb	16-Feb	17-Feb	ARIPEX-AmeriStamp Expo (joint show) (WSP)	Mesa, AZ	Show
	16-Feb	17-Feb	<i>Regina Philatelic Club Show</i>	Regina, SK	Show
1-Mar	2-Mar	3-Mar	<i>APEX (Anchorage Philatelic Society)</i>	Anchorage, AK	Show
	2-Mar	3-Mar	NOVAPEX (Redding Stamp Club)	Redding, CA	Show
	9-Mar	10-Mar	FRESPEX (Fresno Philatelic Society)	Fresno, CA	Bourse
	16-Mar		<i>Willamette Valley Stamp Exhibition Stampfest</i>	Eugene, OR	Show
		17-Mar	<i>Willamette Valley Stamp Exhibition STAMPEX</i>	Salem, OR	Show
	23-Mar	24-Mar	Edmonton Spring Show (Edmonton SC) (WSP)	Edmonton, AB	Show
	6-Apr		<i>John D. Arn Stamp Symposium (NWFSC)</i>	Moses Lake, WA	Education
	6-Apr		<i>Roundup Stamp & Coin show (Olympia Philatelic Soc)</i>	Chehalis, WA	Bourse
		14-Apr	<i>Fenwick Stamp & Coin Show</i>	Renton, WA	Bourse
		14-Apr	<i>AMPEX (Fraser Valley Stamp Club)</i>	Abbotsford, BC	Show
	20-Apr	21-Apr	<i>Spring Bourse (Evergreen Stamp Club)</i>	Kent, WA	Bourse
26-Apr	27-Apr	28-Apr	WESTPEX (WSP)	Burlingame, CA	Show
10-May	11-May	12-May	PIPEX Pacific Intl. Philatelic Exhibition (WSP)	Portland, OR	Show
	25-May		<i>Coin & Stamp Show (North Shore Numismatic Soc.)</i>	Burnaby, BC	Bourse
	1-Jun	2-Jun	Greater Seattle Postcard & Paper Show	Kent, WA	Bourse
	8-Jun	9-Jun	<i>SOPEX (Southern Oregon Philatelic Society) (new dates)</i>	Central Point, OR	Show
		9-Jun	<i>Fenwick Stamp & Coin Show</i>	Renton, WA	Bourse
	20-Jul	21-Jul	<i>Summer Show (Evergreen Stamp Club)</i>	Kent, WA	Show
26-Jul	27-Jul	28-Jul	AMERICOVER (WSP)	St. Louis, CA	Show
	27-Jul	28-Jul	Greater Reno Stamp & Cover Show (NSSS)	Reno, NV	Show
2-Aug	3-Aug	4-Aug	NTSS-APS StampShow (begins 1-Aug) (WSP)	Omaha, NE	Show
	10-Aug		<i>Strait Stamp Show (Strait Stamp Society)</i>	Sequim, WA	Show
		11-Aug	<i>Fenwick Stamp & Coin Show</i>	Renton, WA	Bourse
13-Sep	14-Sep	15-Sep	SEAPEX Seattle Philatelic Exhibition (WSP)	Tukwila, WA	Show
	14-Sep	15-Sep	<i>Coin & Stamp Show (North Shore Numismatic Soc.)</i>	Burnaby, BC	Bourse
27-Sep	28-Sep	29-Sep	<i>VANPEX (British Columbia Philatelic Society)</i>	Burnaby, BC	Show
		13-Oct	<i>Fenwick Stamp & Coin Show</i>	Renton, WA	Bourse
	9-Nov	10-Nov	Filatelic Fiesta (San Jose Stamp Club) (WSP)	San Jose, CA	Show
	23-Nov		<i>Coin & Stamp Show (North Shore Numismatic Soc.)</i>	Burnaby, BC	Bourse
Repetitive Events			<i>Rose City Stamp Fair (2nd Saturday OSS clubhouse)</i>	Portland, OR	Bourse
			<i>Collector's Corner (4th Saturday OSS clubhouse)</i>	Portland, OR	Bourse