

Federated Philatelist

Journal of the Northwest Federation of Stamp Clubs

No. 227 June 2019

PIPEX 2019

— by Jack R. Congrove, Northwest Federation

The 76th edition of the Pacific International Philatelic Exhibition (PIPEX) was held at the Red Lion on the River Hotel in Portland, Oregon, on 10–12 May 2019.

This exhibition is one of about 30 annual World Series of Philately (WSP) national-level shows accredited by the American Philatelic Society (APS). It is sponsored by the Northwest Federation of Stamp Clubs (NWFSC) and presented by the Portland Philatelic Exhibitions (PPE) assisted by the Oregon Stamp Society (OSS).

This will be the **final year** that PIPEX will be held at the Red Lion venue. The hotel will be undergoing a remodel, and they plan to increase the charges for their exhibition space to a level unaffordable for PPE. PPE plans to hold the show beginning next year at the **Holiday Inn Portland Airport** located at 8439 Northeast Columbia Boulevard in Portland.

The show featured 31 dealers, fewer than the 40 dealers planned, and 67 exhibits in 242 frames. Ten of the one-frame exhibits were club or society showcases that were non-competitive. An additional seven exhibits were Court-of-Honor, or non-competitive entries.

The show hosted annual conventions of the American Revenue Association (ARA), State Revenue Society (SRS), and Pacific Northwest Postal History Society (PNWPHS). I attended the meeting of the PNWPHS on Saturday and it was literally standing room only. Members from all three societies provided several philatelic exhibits.

The show celebrated the Centenary of Prohibition as its theme, which was a nice tie-in with the revenue societies seeing as how there are many revenue stamps related to the collection of taxes on alcoholic beverages.

The ARA society exhibit, *What the R's Are*, showed examples of every type of U.S. Revenue stamp listed in the *Scott Catalogue*. The rarest and most unusual stamp, a copy of which I have never seen before, was a private die canned fruit stamp (RP1). This is the only stamp listed by Scott that has the RP prefix letters, and there are fewer than 30 copies known.

The show offered a Scout stamp collecting merit badge workshop on Saturday attended by six Scouts. Harmer-Schau conducted an auction on Sunday.



Private Die Canned Fruit Stamp (enlarged) (Sc# RP1)

It appeared to me that the show attendance was significantly smaller than in previous years. A spot check with some of the dealers revealed mixed results for their sales.

—continued on page 4

Inside

PIPEX 2019 – Jack R. Congrove.....	1
From the Editor’s Desk.....	2
Executive Secretary’s Notes.....	3
OSS Club Exhibits at Library.....	3
APEX 2019 – Eric R. Knapp.....	5
Regina Stamp Show – Mike Cleary.....	5
Arn Philatelic Symposium – Jack R. Congrove.....	6
Evergreen Summer Show.....	7
VICTOPICAL – Jack R. Congrove.....	8
Willamette Stamp Show – George W. Struble.....	9
Aspect Ratio – Daniel L. Herting.....	10
Canada Sweet Desserts.....	11
Federation AGM Minutes – George W. Struble.....	12
VANPEX 2019 – Derren Carman.....	13
ATA Executive Director – Jack R. Congrove.....	13
Sand Dune Stamps – William Pekonen.....	14
Lakeview, WA – Jack R. Congrove.....	16
SEAPEX Theme – Jack R. Congrove.....	18
Club Activities.....	20
Volcanism Quiz.....	23
Stamp Show Calendar.....	24

The Federated Philatelist

Editor

JACK R. CONGROVE
P.O. Box 33092
Fort Lewis, WA 98433
jackcongrove@comcast.net

Northwest Federation of Stamp Clubs

<http://www.nwfedstamps.org>

Executive Secretary

LAWRENCE R. CRAIN (2022)
P.O. Box 4395

Medford, OR 97501
Phone: 541-779-9462
larry.crain@gmail.com

Chairman of Board

ERIC R. KNAPP (2021)
APS, Anchorage, Alaska

Board of Directors

MICHAEL P. ANDERSON (2020)
FVPC, Abbotsford, British Columbia

JAMES J. HIRSTEIN (2021)
Garden City SC, Florence, Montana

DARIN P. CHERNIWCHAN (2021)
FVPC, Chilliwack, British Columbia

GEORGE W. STRUBLE (2020)
Salem Stamp Society, Salem, Oregon

Treasurer

J. ALEX HADDEN (2020)
19-7651 Francis Road
Richmond, B.C. V6Y 1A3
Phone: 604-272-2614
alex-hadden@shaw.ca

Judging Chairman

DICKSON H. PRESTON
Seattle, Washington

Historian

WILLIAM B. AILES
Spokane, Washington

Webmaster

DAVID E. HARRIS
Medical Lake, Washington
sqpiano@gmail.com

Facebook

<https://www.facebook.com/groups/836770459670958/>

From the Editor's Desk



In 2013, the American Topical Association held a joint show with the Rochester Philatelic Association in Rochester, New York. The ATA's National Topical Stamp Show and Rochester's ROPEX were, and are, World Series of Philately (WSP) national-level exhibitions, so the organizers expected that the joint show would attract a lot of attention and provide an enhanced experience for all of the attendees.

However, on Friday, the first day of the three-day show, attendance was very poor. Hardly any dealers were busy and no one was looking at the exhibits except the jury. What had happened?

For many previous years, ROPEX had been held at a local hockey arena. The venue was large and inexpensive to rent and was convenient to get to. But in 2013, the arena was undergoing renovation and was not available to host the stamp show. Accordingly, the Rochester committee arranged to hold the show in an armory located near downtown. This venue was merely adequate and not as easy to reach.

Of course, the organizers made sure to publicize the location change in their promotion materials and advertisements. But what they did not consider is that many people are subject to force of habit and few people actually read the promotion materials very closely. They look at the headlines, ignore the details, and make assumptions based on their past experience.

Consequently, many show visitors went to the hockey arena on Friday expecting the stamp show to be in its usual location. Confused and with no idea where else to go, they went home instead. On Saturday, some of these folks finally arrived at the correct site and several of them complained as though it was the organizer's fault that they themselves had failed to follow directions.

I use this example as a lesson for everyone concerning PIPEX 2020. As Rush Limbaugh would say, "For you folks in Rio Linda, that is the show next year." **PIPEX is moving.**

It will no longer be at the Red Lion Hotel. Next year it will be held at the **Holiday Inn Portland Airport** located at 8439 Northeast Columbia Boulevard in Portland. Please do not make the mistake that the people in Rochester made. Go to the correct place.

Newsletter editors, please make sure I am on your distribution list so I can report your news to others in the Federation.

Also, I am eager to receive more articles. The inbox is sparse.

Club officers, send me news about your club's activities and accomplishments, especially if you present an exhibition. I will publish this information in upcoming editions. **Input for the next edition is due to me not later than 15 August 2019.** Send to: jackcongrove@comcast.net.

— Jack R. Congrove, Editor

Answers to Quiz: (Mount Rainier), 4-F (Mount Hood), 5-D (Mount Mazama-Crater Lake), 6-J (shield volcano), 7-A (Mount St. Helens), 8-G (Mount Baker), 9-C (Mount Shasta), 10-I (Mount Adams). Bonus (Fairth, or North Sister, is the oldest and only shield volcano of the three. It overlays an older shield volcano named Little Brother)

Executive Secretary's Notes

Eleven Ways to Have Fun in Stamp Collecting

1. Collect an interest you've never had a chance to pursue—travels, animals, people, etc.
2. Have coffee and conversation at your local club.
3. Look for a stamp or cover to fill a hole or need.
4. Get the euphoric rush of actually finding a stamp or cover to fill a hole or need.
5. At a dealer's table at a stamp show, listen to the conversation about a stranger's interest.
6. Meet with acquaintances you only see at stamp shows and let these acquaintances become friends.
7. Join a specialist society and talk, even by email, with others of the same special interest, and enjoy the society's newsletter.
8. Read *The American Philatelist* and other stamp magazines.
9. Buy and sell at a club auction.
10. Look at exhibits at a stamp show, even if you only read those that interest you. If you do this at several shows, you will find that more interests you.
11. Buy something unusual—such as the stainless steel post card I bought at PIPEX last month—and show it off to friends, even non-collecting friends.



OSS Club Exhibit at Local Library

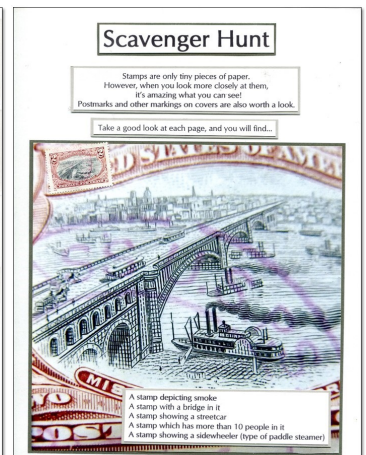
Shute Park Branch Library in Hillsboro, Oregon, will be the venue for a two-month display by the Oregon Stamp Society this summer. From 1 July to 1 September, the library's three glass cases will be filled with exciting stamp and cover items, as well as supporting material such as toys, shells, photos and ephemera. There may even be a vinyl record on display! (Remember those?)

The PIPEX 2019 club exhibit will be the main feature, backed up by the Scavenger Hunt exhibit that was invited as a non-competitive entry for PIPEX.

Prepared by members of the Philatelic Society of Examiners of Unusually Detailed Objects Noting Yesterday's Memorials, each page of the Scavenger Hunt exhibit tells a separate philatelic story.

Members of both clubs made extra pages, making a total of 38 in all. This means that pages can be changed around to "freshen up" the display every two or three weeks. Make a point of seeing it if you are in the area.

The timing is serendipitous as the club exhibit is entered in SEAPEX 2019 to be held on 13–15 September.

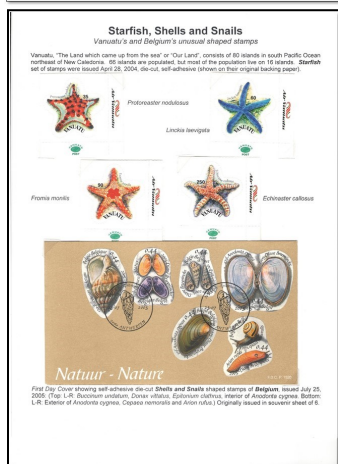


Ritzville Rendezvous

The annual Ritzville Rendezvous between The Inland Empire Philatelic Society (IEPS) and the Tri-Cities Stamp Club is planned for 17 August at Jake's Restaurant in Ritzville, Washington.

Registration begins at 12:30 PM. There will be both a live and a silent auction. The program will include live presentations. A dinner will take place at about 5:30 PM following the auctions. Cost is \$12 per person.

Contact Kenneth Rehfeld (kenrehfeld@comcast.net) from IEPS to register for the event.



Sample OSS Club Display pages

PIPEX 2019 (from page 1)

The six-member philatelic jury was led by Kathy Johnson from Galena, Illinois. Others on the jury were: Mark Banchik from Great Neck, New York; Norma Nielsen from Eugene, Oregon; Jane Sodero from Dothan, Alabama; and Alan Warren from Exton, Pennsylvania. Mark Loomis from Portland, Oregon, served as an apprentice.



Kathy Johnson, Jane Sodero, and Norma Nielsen at the banquet

Readers should note that half of the jury members were women. This is another indicator of the increasing involvement of women at higher positions in our hobby.

In that regard, Women Exhibitors (WE) held a society meeting on Saturday attended by about 20 members. They are planning their next biennial convention (WE Fest) at Chicagopex 2020. By the way, you need not be female to be a member. The organization is open to all who want to promote participation by women in the hobby.

The Grand Award winner of the multi-frame exhibits was Frank L. Sente from Prescott, Arizona, for his ten-frame Revenue exhibit, *A Fiscal History of the U.S. Documentary Taxes 1898-1902*. This exhibit also received the ARA Grand Award for the best multi-frame revenue exhibit and the U.S. Stamp Society Statue of Freedom Medal.



Frank Sente receiving the PIPEX multi-frame Grand Award from Jury Chief Kathy Johnson

Dr. Sam Chiu from Toronto, Quebec, received the multi-frame Reserve Grand Award for his five-frame exhibit, *Chefoo Local Post, China 1893-96*.

David W. Snow from Portland, Oregon, won the One Frame Grand Award for *The 1850 First Issue of Austria and Lombardy-Venetia: a Study of Uses*.



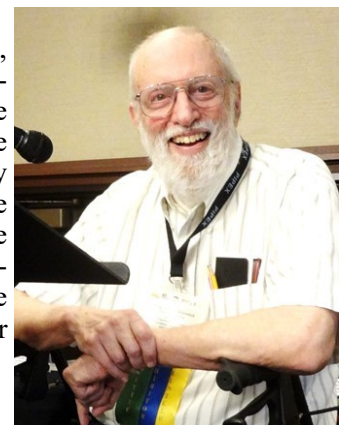
David Snow receiving the PIPEX one-frame Grand Award from Jury Chief Kathy Johnson

Both Sente and Snow will get to compete against the Grand Award winners from the other World Series of Philately shows for the Champion of Champions Award.

The multi-frame competition will be held at the joint APS-ATA StampShow/National Topical Stamp Show in Omaha, Nebraska, on 1-4 August 2019. The one-frame competition will be at the St. Louis Stamp Expo in St. Louis, Missouri, on 27-29 March 2020.

Josiah Brown received the Youth Grand Award and the Oregon Stamp Society Foundation Youth First Place for his two-frame exhibit on modern photography, *Candid Philately*.

Tony Wawrukiewicz (right), the President of Portland Philatelic Exhibitions, served as the Master of Ceremonies at the Awards Banquet on Saturday evening. One hopes that the new venue next year will be able to produce food as delicious as the buffet dinner at the Red Lion. I also will miss their great Mother's Day brunch.



—continued on page 19

APEX 2019

— by Eric R. Knapp, Anchorage Philatelic Society

The 67th Alaska Philatelic Exhibition (APEX) was held 1–3 March 2019, at the Anchorage Senior Activity Center in Anchorage, Alaska. This has been our venue for the last few years.

It was a brisk, early March weekend in Anchorage. The days are getting longer, and the weather was sunny and bright. The Iditarod Trail Sled Dog race started in Anchorage and the Anchorage Fur Rendezvous was in full swing.

The foot traffic was lower than in past years, but the people who did come were expressly looking for the show. So, we had lots of interest. It was good to see them all.



APEX 2019 Exhibit Area

We had one more exhibitor this year than last year. Stan Grove, a member who now lives in Wyoming, sent his exhibit, *Definitives on Multi-franked Covers, 1870s–1990s*, that went on to win the Grand Award at the show. We need to continue our efforts to grow more new exhibitors for the future. We will be spending some time over the coming year working on this.

This year we presented the Thunderbird Award for the second time. The recipient once again was Judy Ireton for her exhibit, *Kings of Italy Portrayed on Revenue Stamps*.

Eric Knapp received the APEX Theme Award for *Apollo 11, The Voyage in Covers*. The Most Popular Award went to David Schwantes for *DeeDee Jonrowe's Iditarod*.

The Grand Award in the Junior Club Exhibits went to Michael Wagner for *The Civil War*.



Thunderbird Award

Regina Stamp Show

— by Mike Cleary, Regina Philatelic Club

The Regina Philatelic Club (RPC) held its annual stamp show on 16 & 17 February 2019, at the Regina Senior Citizens' Centre.

The following dealers participated in our show this year: Dwayne Miner, Royal William, Les Garvey, Al Wingate, Terry Shestko, Jim Smalley, Fred Searle, George Manz, Brian Best, and Andy Zook.



Dealer tables of Dwayne Miner & Royal William

The show had several very nice displays.



This year, we had very good attendance on both days. The dealers reported that they were very pleased at the level of spending by the attendees at the show.

We greatly appreciate the efforts of the many club members who contributed to making the show a success. About a dozen worked on Friday before the show to set up the room for the dealers to move in. On Sunday, ten members stayed after closing to put away tables and chairs and help the dealers pack up.

The show next year will be at the same location on 15–16 February 2020.

Arn Philatelic Symposium



— by Jack R. Congrove, Evergreen Stamp Club

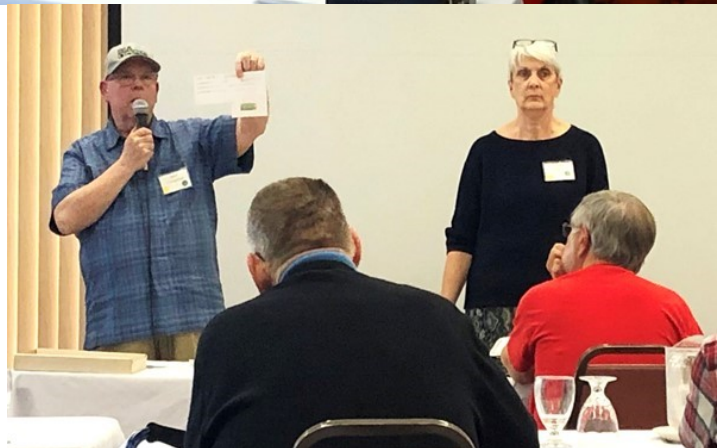
The 29th John D. Arn Philatelic Symposium was held on 6 April 2019, at the Best Western Plus Lake Front Hotel located in Moses Lake, Washington. The Northwest Federation of Stamp Clubs supported this event by paying for the rental of the conference assembly rooms.

About three dozen philatelists from the Pacific Northwest assembled to hear presentations by four speakers on a variety of subjects. This symposium also included a live auction and a silent auction with hundreds of lots of immense philatelic variety.

The diversity of formal lectures coupled with discussions among the attendees provided a unique educational experience. One long-time collector told me that every time he comes to the symposium, he learns something interesting about philately that he knew nothing about.

The symposium is not only an opportunity to hear interesting presentations, but also socialize with others interested in stamp collecting. In addition to a hospitality hour on Friday evening, there was a no-host dinner at a local buffet restaurant.

On Saturday, both a luncheon and dinner were offered as part of the social activities.



Auctioneer Jack R. Congrove and Symposium Mistress of Ceremonies Anne B. Harris conducting live auction

(IEPS) gave the first presentation on the philately of Belgium as a survey of the crossroads of Europe. He focused on the history of the country and its royal family.

Ina Inklebarger from Chehalis, Washington, spoke about the challenges involved with collecting Hawaiian Town Postmarks. This is an interesting and complex topic given the many varieties.

Richard Sola from the IEPS and a professional historian, offered some views on the relationship between history instruction and philately. He suggested that historians mis-



The silent auction resulted in sales totaling \$627.75. The live auction offered many lots of high value items and resulted in sales of \$768. All bidders gained some great material at bargain prices.

Myron Molnau from the Inland Empire Philatelic Society



Arn Speakers L to R: Myron Molnau, Ina Inklebarger, Lisa Foster, Richard Sola

Arn Symposium *(from page 6)*

understand philately and should be able to make better use of philatelic research in their own research and teaching. Likewise, philatelists can expand philately by publishing articles outside the philatelic press, including preparing history exhibits for museums and other educational settings.

Lisa Foster from the Evergreen Stamp Club (ESC) gave a talk on volcanoes illustrated with many stamp images depicting these mountains and related scientific matters. As we all reside in the region potentially affected by the many Cascade volcanoes, this instruction was interesting and educational. The ESC will be using “Volcanoes” as the theme of their club showcase exhibit this year.

David Harris, who along with his wife Anne, has been the one organizing this event since John Arn passed away, will be retiring after next year and is looking for a replacement. Contact him at (sqpiano@gmail.com) to apply.

Next year, the Arn Philatelic Symposium is planned for the first Saturday in April at the same venue. I strongly encourage everyone interested in philately to attend. You will meet many people with like interests and, as my friend observed, I am sure you will also learn something interesting about our hobby that you did not even suspect.

Evergreen Summer Show

Make plans now to attend the Evergreen Stamp Club Summer Exhibition on 20–21 July 2019. The show hours on Saturday are 10:00 AM to 5:00 PM, and on Sunday from 10:00 AM to 4:00 PM. The show will be held at the Kent Commons Recreational Center located at 535 4th Avenue North in Kent Washington.

The theme at the show this year is “Volcanoes of the World.” There are currently 25 frames of exhibits entered covering a variety of topics to be judged by Dickson Preston and Larry Crain. More exhibits are invited.

The show will feature 20 dealers who will be happy to help you fill your wish list.

A no-host Awards Banquet will be held on Saturday after the show closes at nearby Mitzel’s American Kitchen from 6:00 to 8:00 PM.

If you would like to exhibit (no entry fee) or attend the Awards Banquet, contact the Exhibits Chair, Lisa Foster at fosteld@gmail.com, or 253-886-2785.

**Seattle
Philatelic Exhibition
SEAPEX 2019**

**an APS-accredited
NATIONAL Stamp Exhibition**

50th Anniversary



First Man on the Moon

**FREE PARKING
FREE ADMISSION**

**30 Stamp Dealers
200 Frames of Exhibits
Scandinavian Collectors Club
UNPA Postal Booth
Scout Merit Badge Seminar
Show Cachet and Cancellation
What's in Your Attic Evaluations
Free Stamps for Youth/Educators**

September 13–15, 2019

Fri. 10AM–6PM
Sat. 10AM–5PM
Sun. 10AM–4PM

**Tukwila Community Center
12424 42nd Avenue South
Tukwila, Washington**

<http://www.seapexshow.org>
Facebook: Seapex: Seattle Philatelic Exhibition

VICTOPICAL 2019

— by Jack R. Congrove, Northwest Federation

I attended the 2019 Victoria Topical (VICTOPICAL) stamp and postcard show held at the Comfort Inn and Suites in Victoria, British Columbia on 9–10 March 2019. The show was sponsored by the Vancouver Island Philatelic Society.

It was a small, but well-attended show with 13 dealers from British Columbia and Alberta.

One of the dealers from Edmonton told me that he had very good business at the show.

I discussed the issue of crossing the border with two of the dealers. The Canadian dealers would very much like to be able to come to shows in the United States, but the bureaucratic problems involved with crossing the international boundary in both directions are prohibitive.

The show included 28 frames of philatelic exhibits. Three of the frames were club showcases, five frames held youth exhibits, and the remainder were adult single and multi-frame exhibits.

The show sponsors do a good job of getting youth involved with stamp exhibiting. They work with the local elementary schools. All of the youth exhibits were partial frames and they were combined into complete frames for display. All of them showed terrific imagination and some of them included very good research on their topic.

Audrey Nielsen won the Junior Award for her exhibit, *Animals, Plants, Space, and Sports*. This exhibit also received the Gerald Wellburn Foundation Award for an exhibit demonstrating originality, innovation, or pride. The Hillcrest Elementary School Stamp Club won the award for the Best Elementary School Display.

I also noted that there were some young people attending the show with their parents.

Don Shorting won the Charles Arnold Grand Award for an illustrated mail exhibit, *Who Was Karl Lewis, Part 2*. Jack Isaacson won the J. Clifford Moore Trophy for the best topical exhibit for *Canada Continued, Part 2*.

Most of the dealers' stock focused on Canada, which is natural given the venue. I did spend considerable time looking through bins of worldwide covers and picked up several interesting (and inexpensive) finds.

The next Victoria stamp and postcard bourse will be at the Comfort Inn on 9 June 2019. The VICPEX Stamp and Postcard Show is scheduled for 5–6 October 2019, at the same venue.



L to R: Don Shorting (Charles Arnold Grand Award winner) and Jack Isaacson (J. Clifford Moore Trophy winner)

Strait Stamp Show

10 August 2019

Strait Stamp Society

Sequim Masonic Lodge

South 5th Avenue & Pine Street

Sequim, Washington

Sun 9:30AM–5:00PM

free stamps for kids

Free Admission

www.straitstamp.org

SOPEX

8–9 June 2019 (new)

Southern Oregon Philatelic Society

Jackson County Expo Park

1 Penger Road

Central Point, Oregon

Sat 10:00AM–5:30PM

Sun 10:00AM–4:00PM

free stamps for kids

Free Admission & Parking

Competitive Exhibits

Willamette Stamp Show



Some of the exhibits at the 2019 Willamette Stamp Show

— by George W. Struble, Salem Stamp Society

In 2018, the Greater Eugene Stamp Society and the Salem Stamp Society partnered to produce a two-day, two-city show. It started in Eugene on Saturday and continued in Salem on Sunday. This was a new adventure; no one had done such a thing before.

This March we did it again. We used the same format. All exhibits were shown and judged in Eugene on Saturday, then demounted, and remounted in Salem on Sunday. It worked just as well as the year before.

The show had fewer exhibits this year, and George Struble, the show director, was disappointed that there were no exhibits from first-time exhibitors. But it was gratifying that the three exhibits that repeated from last year were all significantly improved.

Some credit for the improvement in those exhibits goes to Larry Crain and Lisa Foster, who gave excellent advice to the exhibitors last year. We were fortunate to bring Larry and Lisa back again, and this year we also had an apprentice judge, Mark Loomis, from Tigard, Oregon.

The Willamette Valley show does not count among Mark's required four apprenticeship shows, but Larry and Lisa are excellent mentors, and Mark will enter his first official apprenticeship show at PIPEX.

Of the six competitive exhibits this year, the Grand Award was won by Carl Newswanger of Salem for his exhibit, *Cancellation Slogans of Newfoundland*, which was the only exhibit awarded Gold.

Cliff Armstrong's exhibit, *Washington State Food Stamps*, earned a Vermeil award.

The People's Choice Awards—one from the voters in each city—went to Tim Bergquist of Eugene for *Superman: Celebrating 80 Years of an American Icon*, and to Larry Crain for his otherwise non-competitive exhibit, *Stamp Shapes with Performations*.

The People's Choice Awards were bottles of Nebbiolo wine from Cameron Vineyards, donated by Marc Dochez of the Salem Stamp Society and a co-owner of Cameron Vineyards.

Struble was very pleased with the excellent support he received from members of both Eugene

and Salem clubs, especially in setting up and taking down frames, and in mounting and demounting the exhibits.

The Willamette Valley Stamp Show seems firmly established. The Eugene and Salem clubs look forward to continuing it in 2020. Stamp collectors around our region are encouraged to prepare exhibits for the 2020 show. This year we had one exhibit mailed from Maryland! Your first-time exhibit will be especially welcomed.



George Struble (L) presents the Grand Award to exhibitor Carl Newswanger

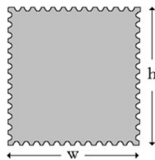
Aspect Ratio (or Who Are You Calling "Square?")

— by Daniel L. Herting, Tri-Cities Stamp Club

[Ed. note: This article first appeared in the March 2019 edition of *The Triangle*, the monthly newsletter of the Tri-Cities Stamp Club. It is republished by permission.]

Stamp collectors are familiar with a large number of special terms that describe stamps—perforation gauge, watermarks, plate number coil, and so on. **Aspect Ratio** is a term some collectors may be unfamiliar with, though its meaning is simple. It is the ratio of the width of a stamp to its height.

$$\text{Aspect Ratio} = \frac{\text{stamp width}}{\text{stamp height}} = \frac{w}{h}$$



Stamps that are wider than they are tall have aspect ratios greater than 1.0, like the stamps below. This shape is also known as “landscape orientation.” Note that stamps of different sizes may have the same aspect ratio.



Tall stamps (portrait orientation) have aspect ratios less than 1.0, in some cases, much less.

In the United States and in most other countries, the common definitive stamps have an aspect ratio of around 0.8, or similar to a standard 8½×11 inch sheet of paper.



Occasionally, definitive stamps are printed in more than one size, but with the same aspect ratio.



Examples of the same basic design, but with different aspect ratios are uncommon, but fun to look for. Here is President Roosevelt in both landscape and portrait aspect ratios.



Triangle stamps, too, come in a variety of aspect ratios. (Does anyone have an example of one that is less than 1.0?)



Stamps with an aspect ratio of 1.0 (i.e., square) are surprisingly uncommon. (I guess it is not really so surprising given the near absence of square paintings in traditional canvas art.)

The basic square stamp has been historically (up until about 1990) so unpopular that designers have often felt compelled to rotate the stamp design 45 degrees, so that it appears to be a diamond shape rather than a square.



Square covers, like square stamps, are not favored by the U.S. Postal Service. They are called “non-machinable,” and require extra postage. The first stamp designated for non-machinable covers was the dragonfly stamp issued in

Aspect Ratio *(from page 8)*

2008, followed by the dolphin stamp, followed by the current series of butterfly stamps. The dragonfly and dolphin stamps were not square, but all of the butterfly stamps have been.

Even the Cub Scouts abandoned their association with square. According to Wikipedia, in 1971 the Cub Scout Promise was changed from “to be square” to “to help other people,” because the term square went from meaning honest to rigidly conventional, or old-fashioned. But if you want to “be square” in your dealings with other stamp collectors, that would be fine with me.



Northwest Federation of Stamp Clubs Chairman, Eric Knapp, and friend, at a recent event

VANPEX

27–29 September 2019
British Columbia Philatelic Society

Nikkei Cultural Centre

6688 Southoaks Crescent
Burnaby, British Columbia

Fri 10:00AM–6:00PM

Sat 10:00AM–4:00PM

Sun 10:00AM–4:00PM

free stamps for kids

Competitive Exhibits

www.vanpex2019.com

Canada Sweet Designs

On 17 April 2019, Canada Post issued a booklet pane of ten Permanent (90c) stamps in five different designs and a \$4.50 souvenir sheet of five stamps depicting Canadian desserts. Among the culinary treats on the stamps are the Nanaimo bar and the Saskatoon berry pie representing our Northwest Federation area.



Rich and chocolatey Nanaimo bars have been associated with their namesake Vancouver Island city since the no-bake recipe first appeared there in the 1950s.



The Saskatoon berry pie, notable for the unique apple and almond taste of its fruit, is a true Canadian original. High in fiber,

protein, and antioxidants, the berries were once a staple of Indigenous people and Prairie settlers.

Also shown in the set are the butter tart, sugar pie (*tarte au sucre*), and blueberry grunt.

The irregularly shaped stamps are die cut and self-adhesive. The booklet and sheet are designed to resemble recipe cards. Roy White and Liz Wurzinger of Subplot Design, Inc. designed the stamps based on illustrations by Mary Ellen Johnson. They were printed by Canadian Bank Note using six-color lithography.

Excuse me now while I go find some whipped cream.



Federation Annual General Meeting

— by George W. Struble, Northwest Federation

[Ed. note: The following are draft minutes of the annual general meeting of the Northwest Federation of Stamp Clubs (NWFSC) and are subject to revision and approval at the next Federation AGM.]

Chairman Eric Knapp called the meeting of the Northwest Federation of Stamp Clubs to order at 9:05 AM on Sunday, 12 May 2019, in the Overton Room of the Red Lion Hotel on the River in Portland, Oregon. Attendees introduced themselves. Those who signed the attendance roster were:

Michael Anderson	Alex Hadden	Larry Maddux
Darin Cherniwchan	Anne Harris	Myron Molnau
Lawrence Clay	David Harris	Cathie Osborne
Jack Congrove	Jim Hirstein	George Struble
Carol Edholm	Lucien Klein	Randy Vessey
David Epps	Eric Knapp	Neil Worley
Brad Fritts	Clarín Lewis	Larry Crain

Chairman Knapp read the names of the Federation members who had passed away during the previous year and the group remembered the “closed albums” with a moment of silence:

Louis Carufel, Jr.	Anchorage Philatelic Society
Robert Stubbs	Evergreen Stamp Club
Irene Baranow	Anchorage Philatelic Society
Robert Barnes	Garden City Stamp Club
F.R. “Bob” McKain	Alaska Collectors Club
Robert Keith	Washington State Phil. Society
Waldo Henning	Washington State Phil. Society
Larry Spray	Oregon Stamp Society
Corliss Clay	Tri-Cities Stamp Club
Chester Masters	Strait Stamp Society
Harold Brandt	Inland Empire Philatelic Society
Robert Beshore	Inland Empire Philatelic Society
Andy Anderson	Lynn Valley Stamp Club
David Campbell	Lynn Valley Stamp Club
Beverly Ness	Inland Empire Philatelic Society

Federation Member Club Service Awards were presented to the following individuals:

Margaret Dunn	Tri-Cities Stamp Club
Michael Luttio	Greater Eugene Stamp Society

The delegates approved the minutes of the previous annual general meeting as they appeared in *The Federated Philatelist*.

Chairman Knapp gave a brief “State of the Federation” report: “We are in good shape; there are no fights!”

Executive Secretary’s Report: Larry Crain mentioned lapsed member clubs of the Federation, which triggered a discussion on how to handle this situation. Director Darin

Cherniwchan moved to form a Membership Committee and offered to chair it. The motion passed.

Committee Reports: The Publications Committee is ably staffed as Jack Congrove produces an excellent Federation journal. Congrove reported that four editions had been published on schedule during the past year. Dickson Preston continues on the Judging Committee. The Youth Committee and Education Committee both need people.

The financial report distributed by Treasurer Alex Hadden was discussed. The NWFSC has two bank accounts, one in Canada (Royal Bank of Canada, Vancouver, British Columbia) and one in the United States (Bank of America, Tampa, Florida). A resolution was made and passed, authorizing three signatories for each account. The following personnel were designated:

Alex Hadden as Treasurer and Larry Crain as Executive Secretary on both accounts.

Director Darin P. Cherniwchan on the Canadian account
Director George W. Struble on the United States account.

The resolution also specified that other signatories are to be removed.

Those present recognized with gratitude the service of Alex Hadden as Treasurer since 1986!

Old business: By-law revisions had been discussed at the previous Board meeting. Larry Crain distributed a draft, to be discussed probably at the next Board meeting.

New business:

David Harris wants to transition out from running the Arn Symposium. We need someone to shadow David during this year and then take over the responsibilities. The Federation is seeking a volunteer.

Darin Cherniwchan requested that we have no more of our meetings on Mother’s Day. It was agreed that next year’s meeting will be on Saturday.

Election: Board members up for reelection were:

Larry Crain	Executive Secretary (three year term)
James J. Hirstein	American Director (two year term)
Darin P. Cherniwchan	Canadian director (two year term)

Lucien Klein moved to close nominations and cast a unanimous ballot for all candidates. The motion was seconded and passed. Thus, all three were reelected.

The meeting was adjourned about 10:20 AM.

A brief Board meeting was held after adjournment of the General Meeting. The only item of business was that the Membership Committee was assigned the task of solicitation of dues.

VANPEX 2019

— by Derren Carman, VANPEX Coordinator

Fewer than four months remain until VANPEX 2019. The British Columbia Philatelic Society (BCPS) will be staging the show in the main hall of the Nikkei Museum and Cultural Centre at 6688 Southoaks Crescent in Burnaby, British Columbia (just off Kingsway) on 27–29 September 2019. Seminars, critiques, and philatelic organization meetings will take place in the adjacent conference room.

This will be the first locally hosted, national-level show in the Vancouver, British Columbia, area in twelve years and will commemorate the 100th anniversary of the founding of the BCPS in 1919.

We are re-introducing an idea from 30 years ago for the show, to wit: the Consignment Table. Due to the high cost of dealer tables for the show, many club members with rather modest inventories cannot justify booking a full table for themselves. We will therefore set up a special consignment table wherein BCPS members in good standing will be able to consign up to 15 items with a minimum value of CDN\$10 per item. The club will sell these on their behalf with a nominal charge of ten percent of the sale price payable to the show to defer expenses. Forms will be available at the club, or by special request.

Laura Termes has kindly volunteered to co-ordinate a special Kids' Table that will offer free stamps, games, and prizes. We will also have a special show souvenir table selling items to commemorate the BCPS centenary.

All relevant forms, such as the exhibit prospectus and application and the bourse application, along with information and updates are on the dedicated VANPEX 2019 website (www.vanpex2019.com) as well as the BCPS website (www.bcphilatelic.org).

Dealers confirmed for the show so far: Deveney Stamps, Lighthouse Canada, Rein Stamm, Lui Bassetto/ Peter Jensen, Firmin Wyndels, Tom Watkins, Gerald Wellburn Foundation, and Stanley Stamps.

The philatelic jury members are: Sam Chiu (Chief), Arlene Sullivan, Ed Kroft, and David Piercy.

Canada Post will produce a special postmark for the show and provide philatelic materials for exhibition awards and door prizes. There is also a possibility that Canada Post will have a station at the show offering full philatelic services. This is still to be confirmed.

We have been investigating possible hotels in the area to arrange a package for attending dealers, exhibitors, and general public wishing to visit from outside the Lower Mainland, but, unfortunately, have been unable to negotiate any sort of useful arrangement. In the meantime, a brief list (covering all budgets) of the closest hotels is posted on the VANPEX website (www.vanpex2019.com).

ATA Executive Director Retiring

— by Jack R. Congrove, American Topical Association

Vera Felts, long-time Executive Director and the face of the American Topical Association, has submitted her notice that she will be retiring this year. Many stamp show attendees are acquainted with Vera, and they will miss her helpful and knowledgeable efforts as an ATA ambassador.

Vera recently celebrated her tenth anniversary as the Executive Director. During her tenure, she began the ATA Ambassador Program that has recruited more than 1,000 members for the ATA. She also developed the popular “Taste of Topicals” packets to entice new and casual collectors to the organization. She has also improved the quality of the ATA publications.

In addition to responding to all member needs and inquiries, the Executive Director maintains membership records, prepares promotional materials and mailings, processes applications and renewals, and coordinates Ambassador support for shows.

On the financial side, the ED maintains financial records, collects dues and other payments, prepares and manages the budget, files taxes, and oversees fundraising. In the publications area, the ED provides input and a column for each issue of *Topical Time*, coordinates the development of ATA handbooks, prepares printed materials for various activities, oversees the work of the checklist coordinators, and provides checklists requested by members.

The ED maintains the ATA office, promotes the organization to increase and retain membership, maintains an inventory of all ATA materials, and assists the coordinators of ATA chapters, study units, committees, and other volunteers.

The ATA is now seeking applicants for Executive Director, which is a full-time position. Send inquiries to the ATA Headquarters, P.O. Box 8, Carterville, IL 62918-0008. Email: americantopical@msn.com.

Evergreen Summer Show

20–21 July 2019

Evergreen Stamp Club

Kent Commons Recreation Center

535 4th Avenue North

Kent, Washington

Sat 10:00AM–5:00PM

Sun 10:00AM–4:00PM

Free stamps for kids

Free Admission

www.stamps.org/Evergreen-Stamp-Club

Sand Dune Postage Stamps from a Different Perspective

— by William Pekonen, BNAPS-Pacific Northwest

This article views the stamps issued by the Trucial States between 1963 and 1971 from a different perspective. The Trucial States included Abu Dhabi, Ajman (and Manama), Dubai, Fujeira, Ras al Khaimah, Sharjah, and Umm al Qiwain.

This article examines the conflict between the legitimacy of collecting interests, the rules of the stamp issuing country, the rules governing the use of postage stamps for international mail purposes, the rules for exhibition judging purposes, the rules adopted by catalogue publishers, and the discretion adopted by dealers and auctions.

Perhaps it is time to recognize that Trucial State postal administrations had a different goal than that pursued by philatelists. Every postal administration in force during that same period, and even until this day, seeks to cater to stamp collectors with the purpose to sell stamps that will never be used for postal service.

To the Post Office, it is money in the bank that will probably never be withdrawn. Their rationale is that the excess funds help to keep the cost of mailing a letter as low as possible. If you believe that, I have a bridge for sale that you can invest in.

It seems that the only rule that stamp collectors choose to follow is how much money they wish to spend on their hobby.

It appears that the Sand Dune country postage stamps meet the tests for both the stamp issuing country and for international mail purposes. The requirements are governed by Universal Postal Union (UPU) regulations. While it is true that the Trucial States were not signatories to the UPU for the subject period, it is also true that the Trucial States were considered to be British Protectorates by treaty until 31 December 1971.

First, the UPU required that a postage stamp must include the words “postes” or “postage,” or the equivalent in the language of the country issuing the stamp. The use of “Air Mail” wording also appeared to be acceptable according to Article 52. The Trucial State stamps include the word “postage” to reflect the association with Britain and the equivalent word in Arabic script.

Second, the UPU required that the posted item must be forwarded as quickly as possible after it entered the international mail stream (Article 1). Each of the seven states established post offices. Initially, the airmail letters were forwarded to Bahrain to be placed into the aircraft. After an airport was expanded in Dubai, the mail entered the international mail stream from that city.

Some of the stamp designs simply state “Air Mail” instead of the word “Postage.” The other issue that was over-

looked by the *Fédération Internationale de Philatélie* (FIP) was the fact that the Trucial State covers were also treated as “On Postal Service” in conformity with UPU Article 23, and sent by air mail under Articles 54 and 55.

As far as the FIP is concerned, their jurisdiction is confined to what and how an exhibit can be judged. The FIP banned these stamps from being exhibited and encouraged collectors to stop buying the stamps by issuing a Black Blot label.

Other philatelic organizations, including the American Philatelic Society (APS), followed the FIP lead. (The Black Blot restriction was quietly reversed by FIP during the 1980s.) With due respect, the FIP does perform a valuable service to philatelists. It offers a peer opportunity to a specialist to educate other collectors about the results of a study subject.

The FIP also appears to cater to the wealthy collector who may have hired a knowledgeable person to assemble a collection containing rarities. Often the exhibitor is an investor and not a philatelist. The investor hopes to enhance the reputation of his collection by becoming a “trophy seeker.”

The FIP encourages investor collections to be entered in exhibitions as a “carrot” in the hopes of advancing the philatelic hobby. Other knowledgeable philatelists exhibit a study collection as an information source to instruct other collectors in specialized philatelic aspects.

It is concluded that the FIP overstepped their role by declaring the legitimate Trucial State postage stamps as “inappropriate and speculative.” The FIP ignored the fact that topical collectors had a different motivation in their collecting interests than the classical reasons followed by those who exhibited on the international stage.

The role of catalogs cannot be always regarded as an accurate source about stamp issues. Printing errors are not always reported, probably because there is scant information about the value to report. For example, there are actually four different types of paper for the Canada 1947 seven cent air mail stamp rather than the two reported. Many more “re-entries” also exist than the ones recorded in the catalogues.

Stamp and cover dealers, out of necessity, usually choose to specialize in different countries or subjects. The time required to acquire the knowledge to recognize the material they take into inventory is exponential. Dealers play an important role in assisting their clients to acquire whatever is needed to fill gaps in their collections.

The dealer does not want to tie up money for inventory that does not sell. There is a limit to their ability to correctly identify every kind of special material. It has been my experience that some dealers have their own interpre-

Sand Dunes *(from page 14)*

State	Area (sq mi)	Population (1968)	Est Total Issues*	Est Avg (8 yrs)
Abu Dhabi	26,000	46,500	100	13
Dubai	1,500	59,000	413	52
Sharjah	1,000	31,500	1,259	157
Ajman & Manama	100	4,200	>3,060	>382
Umm al Qiwain	300	3,700	1,500	188
Ras al Khaimah	650	24,500	>1,136	>142
Fujeira	450	9,700	>1,559	>194
Trucial Oman Scouts	n/a	1,000	0	0
Total	30,000	180,200	>9,027	1,128

* These quantities do not include imperforate or other varieties of the same stamp.

tation of what is to be considered as “philatelic.” In some cases, it is simply applied to material that is not sought by their established clientele.

A similar role is played by auction firms. The role to establish stamp values obtained at auctions is minimal for this reason. Much depends upon how the auction firm describes the philatelic material and whether or not the people who normally collect that type of material participated in the bidding.

Supply and demand remain the overriding consideration in establishing values. A collector may bid a higher price to obtain philatelic material that is more important to his or her collection than it might be worth to another collector.

The term “philatelic” appears to mean different things to different collectors. In some people’s opinion, the word is used in a derogatory manner to describe something they may not agree with. In this context, the definition shown in the Oxford English Dictionary is adhered to. The word is defined as “related to or engaged in philately.”

Many stamp collectors do not care about exhibiting their collections. They collect only to please themselves. These collectors are not concerned with exhibiting simply to win ribbons and trophies, or to show off their rare stamps. In a perfect world, an exhibition would be a place to share knowledge and tell stamp stories.

Some collectors choose to become specialists in a particular narrow collecting interest and have restricted their interests in the hope of identifying and finding rarities. That is all well and good because they are following their own rules. Usually, the results are published for the benefit of other collectors. For example, the American Topical Association (ATA) was formed in 1949, to cater to topical collectors. The ATA produced category indexes to list the applicable stamps produced by different countries.

There is no question about the fact that the so called Sand Dune countries produced a larger number of stamps than were required for local needs and to raise money for the respective Sheik’s pockets. The stamp production came to an end after the postage stamps of the United Arab Emirates became available.

How many stamps were produced during 1963–1971 to earn this disreputable Sand Dune reputation? According to reputable sources, the table above shows the numbers: Compare those quantities with the 1968 Census data reproduced in Hawley’s book about the history of the Trucial States.

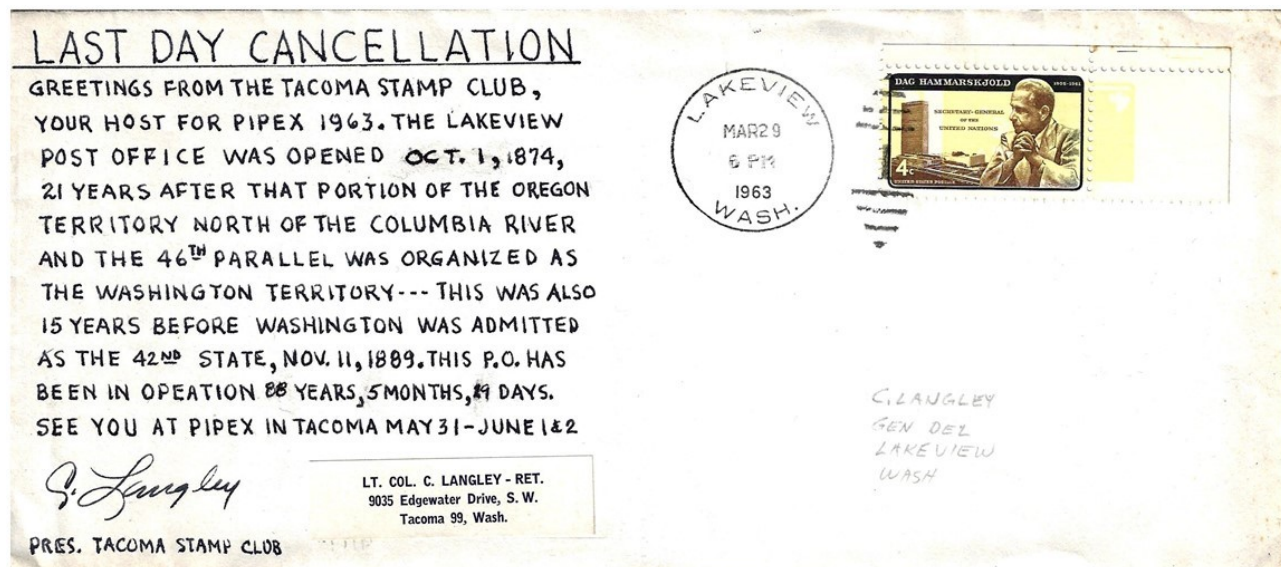
For many years since then, almost every postal administration has followed in the footsteps of the Trucial States. Topical commemorative or special interest stamps have been produced in greater numbers to increase postal administration revenues.

Critics of the Trucial State stamps claimed that few of the postage stamps were used for postal services, and therefore became a pariah in their eyes. The same words could be used today for Canadian stamps, for example. It is difficult to find covers bearing the different commemorative or even definitive stamps.

Other critics claim that there is no proof that many of the existing covers were not processed in the mail because they do not have receiving marks. Second Class mail has never received receiving marks. Second Class mail may sit in the post office for several days until all First Class mail has been sorted and delivered. Those critics simply do not understand post office procedures. Their claims can be dismissed.

—continued on page 17

Lakeview, Washington



— by Jack R. Congrove, Tacoma Stamp Club

The cachet on the cover shown above commemorates the final day of operation of the post office in Lakeview, Washington, on 29 March 1963.

It was created by C. Langley, a retired lieutenant colonel, who at the time was the President of the Tacoma Stamp Club. Langley was an exhibitor specializing in countries where he had been stationed during his military service. He also served as a philatelic judge at some PIPEX shows.

The cover is franked with a corner copy of the 4-cent Dag Hammarskjold special printing stamp (Sc#1204), which had the yellow intentionally inverted, issued on 16 November 1962. The selvage clearly shows the yellow extending into the margin of the sheet.

The original Hammarskjold stamp (Sc#1203) was issued on 23 October 1962, one year after the death of the UN Secretary General in an airplane crash. The stamp was printed on the Giori Press in three colors: black, brown, and yellow. Some sheets with the yellow color inverted escaped the Post Office Department quality control inspection and were sold to the public.

When Postmaster General J. Edward Day found out about the mistake, he ordered the intentional reprinting of the yellow invert to avoid creating a rarity, commenting, “The Post Office Department is not running a jackpot operation.” The reprint is sometimes called “Day’s Folly.”

It is unknown how many original invert stamps were produced and it is not possible to tell a reprint from an original unless it has a clear, authentic postmark prior to 16 November 1962. Such covers must also be accompanied by a certificate from a recognized expertizing committee.

Presumably, it was Langley who hand-lettered the cachet

text, which describes some of the history of the Lakeview post office and the Washington Territory.

Apparently, he either got the opening date wrong on the original cachet, or left it blank, because it was smudgingly entered later by hand. Then the calculation for the years, months, and days that the office had been open was also entered separately and not very neatly.

He also notes in the cachet that the Tacoma Stamp Club would be hosting the upcoming PIPEX 1963 exhibition. The show was held at the Hotel Winthrop in Tacoma on 31 May–2 June. This was the second of three PIPEX shows to be held at that venue. The first was in 1954, and the last in 1969.

The Hotel Winthrop is important to Northwest Federation history because it was the site where the Federation was founded on 27 April 1935, and also where the Federation delegates met on 1 September 1946, to reorganize the Federation following its hiatus during World War II.



Hotel Winthrop postcard, c. 1930
color half-tone, white border, E.C. Kropp & Co. Milwaukee

Lakeview, Washington (from page 16)

Lakeview, Washington (not to be confused with the smaller Lakeview village in Grant County, which still has a post office), was an unincorporated area in Pierce County south of Tacoma. It sat on what in 1963, was the west side of Interstate 5 across from McChord Air Force Base (now Joint Base Lewis-McChord). The district included the U.S. Navy Advance Base Depot. The area currently is part of the city of Lakewood.

Lakeview did not actually have much of a lake view. Steilacoom Lake and Gravelly Lake are close by as is the much smaller Hidden Lake, but all were surrounded by forests and hidden from view. Perhaps the combination of these lakes and forests are where Lakewood gets its name.

In the late 19th and early 20th centuries, this area was mostly forest and farm land. The first county seat was Steilacoom, about six miles away. The seat moved to Tacoma in 1880.

After the construction of Fort Lewis in 1917, Lakeview would have been the nearest off-post post office. It occupied several locations, the last being in a private house.

Today, the area is mainly industrial with businesses along the I-5 corridor and Bridgeport Way. It also includes the site of St. Clare Hospital and the Lakewood Sounder rail station. No trace of the post office remains.

UPCOMING SHOWS

SOPEX 2019

June 8–9

Jackson County Expo Park, Central Point, OR

Evergreen Summer Show

July 20–21

Kent Commons Rec Center, Kent, WA

StampShow/NTSS

August 1–4

CHI Health Center, Omaha, NE

Strait Stamp Show

August 10

Sequim Masonic Lodge, Sequim, WA

SEAPEX 2019

September 13–15

Tukwila Community Center, Tukwila, WA

VANPEX 2019

September 27–29

Nikkei Cultural Centre, Burnaby, BC

Sand Dunes (from page 15)

It is possible that the FIP Black Blot decision was a blessing in disguise. Perhaps the airmail and registered covers from that period are very scarce. But there does not seem to be any doubt that both the registered covers and the second class air mail from the seven states are a legitimate collecting interest. Even some of the stampless covers showing “On Postal Service” or “Postage Paid” are difficult to find.

The Trucial States took in countless millions of dollars by catering to the topical collector. The Arabian merchants spotted a demand for stamps depicting many different interests. The mainstream postal administrations were slow to react.

There is a saying that the road to riches is possible if one can find a need and fill it. The Arab merchants seized the opportunity to the delight of the topical collector. To the purist philatelist, here is the challenge: Try to build a complete collection of all the stamps produced by one or more of the Trucial States. You might be able to do so at a reasonable cost since many of the used stamps were soaked off the covers that included new issue announcements and the accompanying order forms. You can find a list of stamps at: www.ohmygosh.on.org.

Good luck!

References:

- This is Philately*, Vol. 3. Kenneth A. Wood. Van Dahl Publications, Albany, Oregon. p.802.
- The Dictionary of Stamps*. James McKay. Michael Joseph, Ltd. London: 1973. p.187.
- UPU Convention and Detailed Regulations*. Vienna: 1964. (see extracts).
- The Stamp Atlas*. Rossiter & Flower. Methuen Publishing, Ltd., North Yorkshire: 1986. p.226.
- Where in the World? 2nd Edition*. Kenneth A. Wood. Van Dahl Publications, Albany, Oregon. p.331.
- The Stamp Collectors Encyclopedia*. R. J. Sutton. Bonanza Books, New York: 1966. p.313.
- The World Almanac 2017*. p.846.
- Canada Postal Guide*, Sections 545, 549 (International Mail). “Official Cover in International Trade,” Robert Plichon. *The American Philatelist*, September 1992. pp.833–843.
- “A New View of ‘Sand Dunes’,” Ken Lawrence. *The American Philatelist*, October 1998. pp.936–950.
- “The Trucial States Palm Trees and the Dhow Issue of 1961,” Emory Earl Toops. *The American Philatelist*, December 2018. pp.1141–1151.
- The Trucial States*. Donald Hawley. George Allen & Unwin, Ltd., London: 1970.
- Personal collection containing more than 70 covers.
- Websites: www.ohmygosh.on.ca
www.freestampcatalogue.com
http://golowesstamps.com/reference/formatprinters/Trucial%20States/Trucial_States_Stamps.htm

Moon Landing Theme at SEAPEX

Shown below is an image of the souvenir cachet for day one of the show and the pictorial postmark that will be available at the Seattle Philatelic Exhibition this year. The cachets and postmark are designed by Theresa Cummins from Tacoma, Washington.

SEAPEX 2019, an American Philatelic Society (APS) national-level stamp exhibition, will take place on 13–15 September 2019, at the Tukwila Community Center located just north of the SeaTac Airport at 12424 42nd Avenue South, Tukwila, Washington.

This year, SEAPEX is celebrating the 50th anniversary of the Apollo 11 manned landing on the Moon. This summer, the United States Postal Service will be issuing two commemorative stamps to mark this anniversary. Many other countries also will issue, or have already issued, stamps to commemorate this historic achievement. SEAPEX will have a special exhibit honoring the anniversary.

The show will host a special ceremony on Saturday at noon to honor the astronauts from all the Apollo missions and to recognize the contributions to this program made by Seattle area companies and individuals. One of these contributions was the construction of the Lunar Rovers produced at the Boeing facility in Kent, Washington, only a short distance from the SEAPEX venue.

The show hours are 10:00 AM to 6:00 PM Friday, 10:00 AM to 5:00 PM Saturday, and 10:00 AM to 4:00 PM Sunday. Parking and admission are free.

The show will feature 25 stamp dealers and more than 3,200 pages of exhibits. As a World Series of Philately (WSP) show, the Grand Award winners for the single-frame and multi-frame exhibits will be eligible to compete at the APS Champion of Champions competitions against winners from other national WSP shows next year in St. Louis, Missouri, and Hartford, Connecticut.

This year, SEAPEX will have a larger than usual jury of seven members. This will enable the show to add more exhibits and no limit has been placed on the quantity of one-frame exhibits to be accepted. If you have been thinking about trying an exhibit, this is a terrific opportunity. You can download the exhibit prospectus and entry form at the show website (www.seapexshow.org).

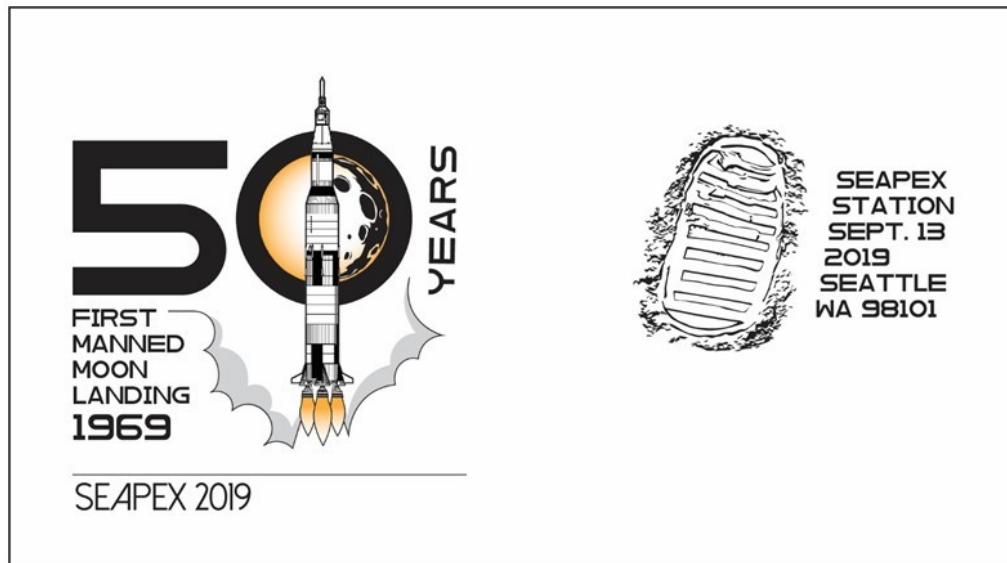
The Scandinavian Collectors Club will hold their convention at the show. Also, the American First Day Cover Society and American Topical Association will have booths. The Northwest Federation of Stamp Clubs will host a town hall meeting.

The event will also host free activities for youth and educators throughout the weekend. Starting Saturday morning, the show will hold a full-day Boy Scout stamp collecting merit badge workshop. Please contact the class coordinator, Rick Crooks (rbcrooks@comcast.net), to sign up early as registrations are limited and typically fill up.

Experts will be available to provide free stamp evaluations, or what to do with that old stamp collection. The United States Postal Service and United Nations Postal Administration will be on hand to sell current postal items.

The show hotel is the Residence Inn South Seattle/Tukwila at 16201 West Valley Highway, Seattle. The SEAPEX rate for a studio suite is \$119. Contact the hotel at (425) 226-5500, or use the link on the SEAPEX website. The group code is “SPXS.”

Visit the show website (www.seapexshow.org) for exhibit prospectus and application, event schedule, exhibit listing, links to the hotel, and other details. Also visit us on Facebook: Seapex: Seattle Philatelic Exhibition.



PIPEX 2019 *(from page 4)*



Youth Grand Award winner Josiah Brown with First Stamps Phil Kumler

The highest award given by the Northwest Federation is the Northwest Distinguished Philatelist Award. This award was started in 1960, and has been awarded to a total of 85 persons. The recipients for 2019, were Lisa D. Foster from the Evergreen Stamp Club in Kent, Washington, and Roger A. Heath from the Strait Stamp Society in Sequim, Washington.

PIPEX has a competition among the one-frame club showcase exhibits. Selected show visitors vote for their favorite exhibit. The prize is a spiffy silver cup that used to be one of the PIPEX rotating trophies prior to the WSP era when exhibiting was only open to Federation members.

The winning club this year was the Evergreen Stamp Club from Kent, Washington. They used *Volcanoes* as their theme. The club gets to keep the cup until the next PIPEX show.



NW Distinguished Philatelist Lisa D. Foster receiving her award from Chairman Eric Knapp



NW Distinguished Philatelist Roger A. Heath (left) receiving his award from Executive Secretary Larry Crain

The NWFSC held its annual general meeting at PIPEX as it has traditionally done since the first PIPEX show in 1936. See page 12 for a report and the minutes of the meeting.

Do not forget! The PIPEX show next year will be held at the **Holiday Inn Portland Airport** located at 8439 Northeast Columbia Boulevard in Portland. The show is scheduled again on Mother's Day weekend, 8–10 May 2020.

Check the PIPEX website (www.pipexstampshow.org) and the Federation website (www.nwfedstamps.org) for information and to obtain exhibit entry forms and other materials pertaining to the show as it becomes available.



Laurie Anderson, Lisa Foster, Jack Congrove, and Carol Edholm each contributed pages for the Evergreen club exhibit

Club Activities



The **Alaska Collectors' Club** has been a Federation member since 2016. They publish a quarterly journal, *The Alaskan Philatelist*. They continue to work on a project to revise the *Postmarks of Territorial Alaska* catalog. Annual dues are \$15 for US members and \$20 for members from elsewhere. Contact Eric Knapp: eknapp@gci.net. See their website www.alaskaphilatelic.org.



The **American Air Mail Society—Northwest Chapter** has been a Federation member since 1983. They publish a quarterly newsletter *Air Mail Northwest*. The chapter has no website. Dues are \$8 per year for print and \$4 for electronic distribution.



The **Anchorage Philatelic Society** has been a Federation Member since 1963. They publish a quarterly newsletter, *The Anchorage Philatelist*. They held their annual APEX show on 1–3 March (see page 5). Their show cover and cancel proved very popular. They meet on the second and fourth Wednesday at the Turnagain United Methodist Church. Dues are \$10 per year, \$15 for families, and \$2 for youth. See their website www.anchoragephilatelic.org.



The **British Columbia Philatelic Society** is a Charter member of the Federation that joined in 1936. This year is the 100th anniversary of the club. They are preparing for VANPEX (see page 13). Meetings are each Wednesday at 7:30 PM at the church hall north of the Jubilee United Church in Burnaby. The third Wednesday is usually their monthly auction. Dues are \$20 per year for individuals, \$30 for families, and \$7.50 for students younger than 18. Website: www.bcphilatelic.org.



The **British North America Philatelic Society** (Pacific Northwest Regional Group) joined the Federation in 1998. They publish the *West Coast Express*. The next regional group meeting will be in September at VANPEX. In our area are the Calgary, Edmonton, and Pacific Northwest chapters. The PNW Chapter publishes the *British Columbia Postal History Newsletter*. Dues are \$10 per year for all. See their website: <http://www.bnaps.org/regional/pnwr/RG-pnwrg.php>.

The **Central Oregon Postal Collective** has been a Federation member since 2016. They do not publish a newsletter. They are planning to hold their first annual stamp show in Redmond, Oregon, on 28 September 2019. They meet on the first Saturday at 10:00 AM at the Redmond Karate

Studio. They accept donations in lieu of dues. Contact stbucknum@msn.com.



The **Collectors Club of Seattle** has been a Federation member since 1954. They publish a quarterly newsletter. They do not have a website. They are trying to expand the content of their newsletter. They meet on the first Friday each month at 8:00 PM at the Unity Church, 16330 NE 4th Street, Bellevue, Washington. They conduct a well-organized auction open to everyone at each meeting. Dues \$20. Contact: hstamps1@frontier.com.

The **Eagle Stamp and Postcard Club** has been a Federation member since 2015. They do not publish a newsletter. They hold auctions about four times per year. They meet on the first Tuesday each month at 7:00 PM at the Eagle Methodist Church. No dues listed. See their website: <http://www.eaglestampandpostcardclub.com/>.



The **Edmonton Stamp Club** has been a Federation member since 2009. They publish a monthly newsletter, *Bulletin*. Each edition is full of interesting news and articles. They held a successful national show on 23–24 March. Four clubs from Alberta held a joint meeting in Red Deer on 25 May. They meet on second and fourth Mondays at 6:30 PM at St. Joseph High School. Dues are \$30 per year for individuals, \$40 for families. There is a one-time \$5 fee for a name tag. See www.edmontonstampclub.com.



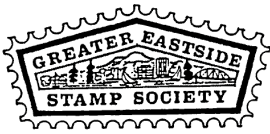
The **Evergreen Stamp Club** has been a Federation member since 1976. They publish a monthly newsletter. They held their spring bourse on 20–21 April, and are planning their summer show for 20–21 July in Kent, Washington (see page 7). They meet on the third Wednesday each month at 7:00 PM at Kent Commons Rec Center. Dues are \$20 per year. See <http://stamps.org/Evergreen-Stamp-Club>.

The **Fraser Valley Philatelic Club** has been a Federation member since 2017. They do not publish a newsletter. They held their annual AMPEX show on 28 April. Subject to school availability, they meet on the third Tuesday of September and on the second Tuesday each other month (except July and August) at 6:00 PM at the W.J. Mouat School in Abbotsford. Annual dues are \$5. See their website at <http://stampclub.ca/fraservalley/>.

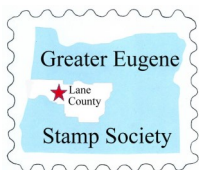
The **Garden City Stamp Club** has been a Federation member since 1999. They held a joint meeting with the IEPS on 4 May. They meet on the first Wednesday and third Monday each month at 7:00 PM at the Atonement Lutheran Church in Missoula. Annual dues are \$10. See their website at <http://gardencystampclub.com/>.

Club Activities (from page 20)

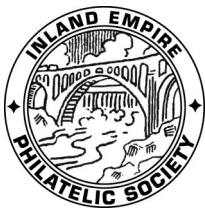
The **Gastineau Philatelic Society** has been a Federation member since 1974. They do not publish a newsletter. They meet on the third Thursday each month at 7:00 PM at 360 Egan Drive, Juneau.



The **Greater Eastside Stamp Society** has been a Federation member since 2013. They publish the *GESS Newsletter* via e-mail only. They do not have a website. They meet on the first and third Thursday each month at 7:00 PM at Unity Church of Bellevue preceded by dinner at a selected local restaurant. Contact: dananielsen@comcast.net.



The **Greater Eugene Stamp Society** has been a Federation member since 2003. They publish the *Echoes* bimonthly newsletter. They currently are seeking a new editor. They held their Stampfest on 16 March (see page 9). They are planning a club picnic for 10 July. They meet on the second and fourth Wednesday each month at 7:00 PM at Saint Jude's Catholic Church. Dues are \$15 and \$5 for youth. See: <http://greater Eugene stamp club.weebly.com/>.



The **Inland Empire Philatelic Society** is a Founding member of the Federation that joined in 1935. They publish a monthly newsletter, *The Lilac Hinge*. They held a joint meeting with the Garden City Stamp Club in Wallace, Idaho, on 4 May. They meet on the second and fourth Tuesday each month at 7:00 PM at the Spokane Valley Eagles Hall. Dues are \$10 per year for individuals, \$15 for families, and \$5 for youth under 18. See their website: www.ieps-stamps.com.

The **Linn County Philatelic Society** has been a Federation member since 2012. They do not publish a newsletter, nor have a website. They meet on the second Thursday each month at 7:00 PM at The Villas. Contact George Larson: larsonglf@mindspring.com. They are **in danger of being dropped from membership** because of non-payment of dues for the past two years.

The **Lynden Stamp Club** has been a Federation member since 2017. They do not publish a newsletter, nor have a website. They meet at 6:00 PM on the last Tuesday of each month at the Lynden City Hall. Dues are \$10 per year. Contact Dave Burger: dave@thegreenbarn.com.

The **Lynn Valley Stamp Club** joined the Federation in 2018. They do not publish a newsletter, nor have a website. They meet from 1:00 PM to 3:30 PM on the second and fourth Wednesday of each month at the Molly Nye House in North Vancouver, BC. Dues are \$20 per year. Contact Neil Worley: sandnworley@shaw.ca.

The **Okanagan Mainline Philatelic Association** has been a Federation member since 1996. They publish the *OMPA News*. They meet five times a year in January, March, May, September, and November. There are member clubs in Kelowna, Penticton, and Vernon. Dues are \$10 per year, \$14 for Family, and \$2 for Juniors (under 16). See their website: <http://www.okanaganstampclubs.ca/>.

The **Olympia Philatelic Society** has been a Federation member since 2012. They publish an electronic newsletter. They held their spring Roundup Stamp Show on 6 April in Chehalis. They are planning their fall Roundup for 12 October. They meet at 7:30 PM on the second and fourth Monday each month at the Olympics West Retirement Inn. Dues are \$10 per year. See website at: <http://olympiaphilatelicsociety.org/>.

The **Olympic Philatelic Society** has been a Federation member since 1953. They do not publish a newsletter, nor have a website. They meet at 6:30 PM on the fourth Tuesday each month at the DK Enterprises store, 10 NE Silver Pine Drive, Bremerton. Contact: stamps@dickkeiser.com. They are **in danger of being dropped from membership** because of non-payment of dues for the past two years.



The **Oregon Stamp Society** has been a Federation member since 1937. They publish a monthly newsletter, *The Album Page*. They provided support for the conduct of PIPEX (see page 1). They have created an exhibit for display at a local library (see page 3). Meetings are on the second and fourth Tuesday each month at their clubhouse. Dues are \$24 per year for regular members, \$16 for associate members who reside outside the area. Website: www.oregonstampsociety.org.

The **Pacific Northwest Postal History Society** has been a Federation member since 2001. They publish a quarterly journal, *The Oregon Country*. Each issue has articles with historical images and nice illustrations of NW postal history material. They held their annual convention at PIPEX (see page 1). Dues are \$20 per year. See their website: <http://pacificnorthwestpostalhistorysociety.org/wordpress/>



The **Peace Arch Stamp Club** has been a Federation member since 2014. They do not publish a newsletter. They meet at 5:00 PM on the first Wednesday of the month (except July and August) at the Surrey Come Share Society Centre. Dues are \$20 per year. See their website: www.peacearchstampclub.com/.

The **Puget Sound Collectors' Club** has been a Federation member since 2017. They do not publish a newsletter, nor have a website. Membership is by invitation. Members bring interesting philatelic items to discuss or resolve a

Club Activities *(from page 21)*

mystery. Anyone interested in joining the club should contact the Secretary, Thomas Matthiesen, via email at: mecopst@earthlink.net.

The **Regina Philatelic Club** is the newest Federation club member. They publish a quarterly newsletter, *Regina Philatelic Quarterly*. They held their annual show on 16–17 February (see page 5). They meet on the first and third Wednesday of the month from September to May at 7:30 PM in the staff room at the Campus Regina Public School. Dues are \$10 per year. <https://reginastampclub.ca/>.



The **Salem Stamp Society** has been a Federation member since 1948. They publish a monthly newsletter, *Willamette Stamp & Tongs*. They held their STAMPEX on 17 March (see page 9). They meet on the second Wednesday each month at 6:00 PM at Fire Station District #1. Dues are \$10 per year for individuals, \$15 for couples, and \$5 for youth. Website: www.salemstampsociety.org.



SNO-KING STAMP CLUB has been a Federation member since 1963. They publish a monthly newsletter, *Sno-King Stamp Club Philatelic News*. They held their annual show on 3 March. The show will move to a different venue next year. The club meets in Everett at the Snohomish County PUD on the second Wednesday each month. Meetings in Edmonds are on hold until further notice. Dues are \$10 per year, \$5 for youth under 18. <http://sno-kingstampclub.freehostia.com>.



The **Southern Oregon Philatelic Society** has been a Federation member since 1955. They publish a monthly newsletter, *The Philatelic Reminder*. Their annual SOPEX show has moved to 8–9 June instead of during the Pear Blossom Festival. They will hold a holiday potluck on 13 July. They meet on the first Thursday at 7:00 PM at the First Methodist Church in Medford. Dues are \$15 per year. Website: www.classic.stamps.org/sops.



The **Strait Stamp Society** has been a Federation member since 1977. They publish a bi-monthly newsletter, *Strait Stamp Talk*. They are planning their annual show for 10 August. They meet on the first Thursday each month at 6:00 PM at the Sequim Library. They also hold an informal mid-month morning meeting at the local Burger King. The club has no dues, but accepts donations. Website: www.straitstamp.org.

The **Tri-Cities Stamp Club** has been a Federation member since 1966. They publish a monthly newsletter, *The Triangle*. They are planning their annual summer potluck, day TBD. They meet on the fourth Wednesday at 7:00 PM in the Activities room at the Royal Colombian Retirement Inn in Kennewick. Dues are \$10 per year for adults, \$1 for students. Website: www.tri-citiesstampclub.org.

The **Umpqua Valley Stamp Club** has been a Federation member since 2018. They publish a monthly newsletter, *Umpqua Stamper*. They do not have a website. They meet on the third Monday each month except June, October, and December at 7:15 PM in the St. George Episcopal Parish Hall in Roseburg. Dues are \$10 per year. Contact: adams@mcsi.net.



USS Puget Sound Chapter 74 of the Universal Ship Cancellation Society has been a Federation member since 1978. They do not have a chapter newsletter, but the Society publishes the monthly *USCS Log*. Annual dues are \$24 for US, \$45 international, and \$16 electronic delivery. See their society website at: www.uscs.org.



The **Vancouver Island Philatelic Society** is a Charter member of the Federation that joined in 1936, and has been a continuous member since then. They publish a monthly newsletter, *The Guideline*. They have a philatelic library for members. Meetings include a small auction. They held their VICTOPICAL show on 9–10 March (see page 8). The club meets at 7:30 PM on the fourth Thursday each month at St. Aidan's Church. Dues are \$15. Website: www.vicstamps.com/vips.htm.



The **Washington State Philatelic Society** is a Founding member of the Federation that joined in 1935. They do not publish a newsletter, nor have a website. They meet on the second and fourth Thursday of each month at 7:00 PM at the Gethsemane Lutheran Church in Seattle.



The **Northwest Federation of Stamp Clubs** held its Annual General Meeting at PIPEX on 12 May (see page .12). There will be a Board meeting at VANPEX in September.

[*Ed. note: If you would like to have news about your club activities and upcoming plans published in future columns, please email details to me (jackcongrove@comcast.net).*]

Volcanism Quiz

Inspired by Lisa Foster's presentation at the Arn Philatelic Symposium in April, this quiz deals with the volcanoes in the geological Cascade Volcanic Arc. There are more than 20 major volcanoes and more than 4,000 separate volcanic vents in this region. The Cascade Volcanic Arc (not to be confused with the Cascade Range, which is a geographic term) contains examples of all three main volcano types: Composite (or Stratovolcano), Shield, and Dome.

- ___ 1. This stratovolcano is the tallest in the Arc.
- ___ 2. This is the only dome volcano in the Arc and the largest lava dome on Earth.
- ___ 3. The stratovolcano named for this person is closer to Vancouver than Mount Baker.
- ___ 4. Two U.S. Navy ammunition ships have been named for this stratovolcano.
- ___ 5. The caldera of this stratovolcano contains the deepest lake in the U.S.

- ___ 6. Medicine Lake Volcano, the largest by volume in the Arc, is the same type of volcano as this one.
- ___ 7. Although some mistakenly believe this volcano is in Oregon, it is actually in Washington.
- ___ 8. A world record seasonal snowfall of 1,140 inches was recorded at this volcano.
- ___ 9. This is the largest stratovolcano by volume in the Arc.
- ___ 10. The third highest volcano in the Arc is named after this person..

(Bonus) The Three Sisters (nicknamed Faith, Hope, and Charity) are closely spaced peaks in Oregon. Two are stratovolcanoes. Which one is a shield volcano.

(Answers on page 2.)



A



B



C



D



E



F



G



H



I



J

UPCOMING STAMP SHOWS / BOURSES

SHOW DATES			Major events in bold / PNW events in italic	Revised: 18 May 2019	
FRI	SAT	SUN	SHOW NAME	LOCATION	TYPE
	1-Jun	2-Jun	Greater Seattle Postcard & Paper Show	Kent, WA	Bourse
	8-Jun	9-Jun	<i>SOPEX (Southern Oregon Philatelic Society)</i>	Central Point, OR	Show
		9-Jun	<i>Fenwick Stamp & Coin Show</i>	Renton, WA	Bourse
		9-Jun	<i>Victoria Stamp & Postcard Fair</i>	Victoria, BC	Bourse
	20-Jul	21-Jul	<i>Summer Show (Evergreen Stamp Club)</i>	Kent, WA	Show
26-Jul	27-Jul	28-Jul	AMERICOVER (WSP)	St. Louis, MO	Show
	27-Jul	28-Jul	Greater Reno Stamp & Cover Show (NSSS)	Reno, NV	Show
2-Aug	3-Aug	4-Aug	NTSS-APS StampShow (begins 1-Aug) (WSP)	Omaha, NE	Show
	10-Aug		<i>Strait Stamp Show (Strait Stamp Society)</i>	Sequim, WA	Show
		11-Aug	<i>Fenwick Stamp & Coin Show</i>	Renton, WA	Bourse
		11-Aug	<i>Victoria Stamp & Postcard Fair</i>	Victoria, BC	Bourse
	17-Aug		<i>Ritzville Rendezvous (IEPS & Tri-Cities SC)</i>	Ritzville, WA	Education
13-Sep	14-Sep	15-Sep	SEAPEX Seattle Philatelic Exhibition (WSP)	Tukwila, WA	Show
	14-Sep	15-Sep	<i>Coin & Stamp Show (North Shore Numismatic Soc.)</i>	Burnaby, BC	Bourse
27-Sep	28-Sep	29-Sep	<i>VANPEX (British Columbia Philatelic Society)</i>	Burnaby, BC	Show
	28-Sep		<i>Central Oregon Postal Collective Show</i>	Redmond, OR	Bourse
4-Oct	5-Oct	6-Oct	WINEPEX (Redwood Empire Collectors Club)	San Rafael, CA	Show
	5-Oct	6-Oct	<i>VICPEX (Vancouver Is. & Greater Victoria Phil. Soc.)</i>	Victoria, BC	Show
	12-Oct		<i>Roundup Stamp & Coin Show (Olympia Philatelic Soc)</i>	Chehalis, WA	Bourse
		13-Oct	<i>Fenwick Stamp & Coin Show</i>	Renton, WA	Bourse
	26-Oct	27-Oct	East Bay Collectors Club Show	Walnut Creek, CA	Show
	2-Nov	3-Nov	SACAPEX (Sacramento Philatelic Society)	Sacramento, CA	Show
	23-Nov		<i>Coin & Stamp Show (North Shore Numismatic Soc.)</i>	Burnaby, BC	Bourse
		24-Nov	<i>Victoria Stamp & Postcard Fair</i>	Victoria, BC	Bourse
29-Nov	30-Nov		<i>Vancouver Stamp Fair</i>	Vancouver, BC	Bourse
	8-Dec	9-Dec	PENPEX (Sequoia Stamp Club)	Redwood City, CA	Show
2020:					
		26-Jan	<i>Victoria Stamp & Postcard Fair</i>	Victoria, BC	Bourse
	15-Feb	16-Feb	<i>Regina Philatelic Club Show</i>	Regina, SK	Show
	14-Mar	15-Mar	<i>VICTOPICAL (Vancouver Is. & Greater Victoria PS)</i>	Victoria, BC	Show
24-Apr	25-Apr	26-Apr	WESTPEX (WSP)	Burlingame, CA	Show
		7-Jun	<i>Victoria Stamp & Postcard Fair</i>	Victoria, BC	Bourse
		16-Aug	<i>Victoria Stamp & Postcard Fair</i>	Victoria, BC	Bourse
21-Aug	22-Aug	23-Aug	APS StampShow (begins 20-Aug) (WSP)	Hartford, CT	Show
11-Sep	12-Sep	13-Sep	SEAPEX Seattle Philatelic Exhibition (WSP)	Tukwila, WA	Show
	3-Oct	4-Oct	<i>VICPEX (Vancouver Is. & Greater Victoria Phil. Soc.)</i>	Victoria, BC	Show
		29-Nov	<i>Victoria Stamp & Postcard Fair</i>	Victoria, BC	Bourse
Repetitive Events			<i>Rose City Stamp Fair (2nd Saturday OSS clubhouse)</i>	Portland, OR	Bourse
			<i>Collector's Corner (4th Saturday OSS clubhouse)</i>	Portland, OR	Bourse