

Federated Philatelist

Newsletter of the Northwest Federation of Stamp Clubs

No. 197, December, 2011

Fort Ontario Emergency Refugee Shelter



October 30, 1945 Oswego, New York from a refugee at the Fort Ontario Emergency Refugee Shelter

— By *Louis Fiset*

The postcard shown here, from Bob Hohertz' collection, illustrates mail generated during a little known operation in the United States that occurred throughout the last year of World War II and beyond – the sheltering of displaced persons from Europe. It is postmarked Oswego, New York. Dated October 30, 1945, months after conclusion of the war, it bears no censorship markings. The 10 cents postage paid overfranks by 2 cents the airmail letter rate to Cuba at that time. The German language correspondence was addressed to what may have been a fellow refugee.

In early spring of 1944, the U.S. War Refugee Board was yet to make a concerted move in offering asylum to refugees. By then, displaced persons were streaming through the Allied lines in Italy, seriously taxing supply lines. As a result, with approval of President Franklin D. Roosevelt, 982 refugees were selected in Italy by U.S. officials and designated for shelter in the U.S. They

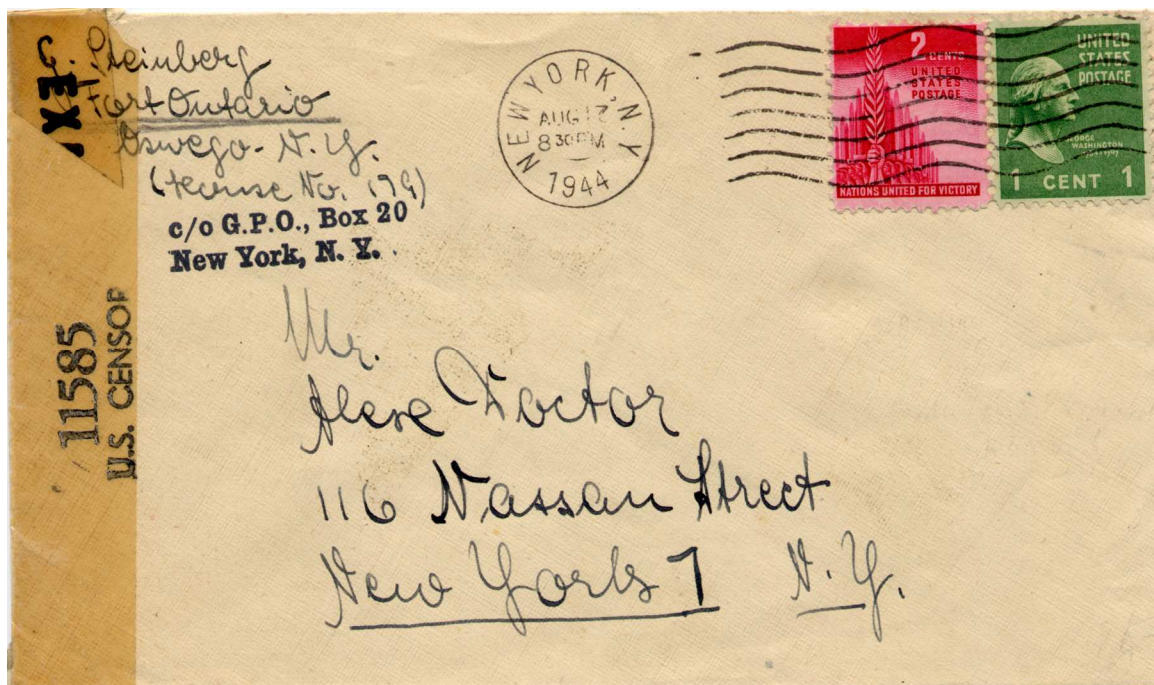
embarked on a troopship at Naples in mid-July. The group arrived in the U.S. during the first week of August. Their destination was Fort Ontario, at Oswego, New York, an army facility turned over to the War Refugee Board as an emergency shelter.

— *Continued on page 2*

In this Issue

Fort Ontario Emergency Refugee Shelter	1
From the Editor's Desk	3
"Repatriated" Mail from Alberta	4
Victoria Philatelic Society	5
Adventures in China	6
Inland Northwest Philatelic Day	7
PIPEX Exhibit Prospectus	8
PIPEX Exhibit Entry Form	11
2012 Show Schedule.....	12

Fort Ontario Emergency Refugee Shelter *(continued from page 1)*



The 982 residents at the shelter were predominantly Jewish, with small contingents of Roman Catholics, Greek Orthodox, and Protestants. The group represented 18 nationalities, with 90 percent of them Yugoslavs, Austrians, Poles, and Germans. Ages ranged from an Austrian infant born two days before the ship sailed to America, to an 80-year old Spanish citizen. Nearly 100 had endured life at Dachau and Buchenwald.

The agency assigned to administer the shelter was the War Relocation Authority, the same organization then running the 10 relocation centers for Japanese Americans in the western states. The WRA attempted to make the lives of the refugees as comfortable as possible while living behind barbed wire. They permitted residents to maintain their own households, and most able bodied residents were employed in essential project duties at the rate of \$18 per month. The refugees staffed the mess halls and hospital and took responsibility for upkeep of the grounds and similar arduous tasks. They even elected an advisory council.

Nevertheless, under President Roosevelt's orders, the refugees were to remain "under appropriate security restrictions for the duration of the war." Because they were not actually living legally in the United States, the refugees were not permitted to live normal lives in the surrounding communities. In fact, liberty would elude them until nearly a half year beyond the end of the war.

Among other restrictions imposed on the refugees was censorship of their mail, both domestic and international. The relevant domestic cover above shows a Fort Ontario,

Owego, NY return address and bears a August 17, 1944 postmark. The contents were examined by a POW Unit censor at the New York field station. The **c/o G.P.O. Box 20** rubber stamp marking indicates the mail was routed through POW channels. The censor placed the letter into the mail stream subsequent to examination, thus bearing a New York, NY postmark.

Sixty-nine from the original group voluntarily left the U.S. before the period of resettlement began in January 1946. Fourteen others died, while twenty-three were born at the shelter and automatically became U.S. citizens. This left more than 900 persons in need of resettlement.

The first 100 refugees left the shelter for resettlement on January 17, 1946. The last refugee departed three weeks later, on February 4. Those admitted as permanent immigrants were dispersed to 20 states and the District of Columbia. The remainder either repatriated or emigrated to other countries. The fort was returned to the Army on February 28, 1946.

Because of the small number of refugees at Fort Ontario and the relatively brief time they were there, the opportunity to generate correspondence was limited. Nevertheless, the current scarcity of covers may be due, in part, to unfamiliarity with the historical event. The search may prove to be worthwhile.

— *Reprinted with permission of the author from the summer 2011 issue of The Prexie Era, the newsletter of the Presidential Era Study Group of the United States Stamp Society. Fiset is the editor of the newsletter and the former president of the Puget Sound Collectors' Club.*

The Federated Philatelist

Editor

LARRY MANN
655 Washington Place SW
Mukilteo, WA 98275
425-514-8949
Larrymann02@aol.com

Northwest Federation of Stamp Clubs

<http://www.nwfdstamps.org>

Chairman of Board of Directors

LAWRENCE CLAY
PO Box 6228
Kennewick, WA 99336-0228
Phone: 509-735-3731
E-mail: lclay3731@charter.net

Board of Directors

ERIC A. RANGER
New Westminster, British Columbia

KEITH SPENCER

Edmonton, Alberta

LAWRENCE CLAY
Kennewick, Washington

LEONARD LUKENS
Portland, Oregon

Executive Secretary

WILLIAM R. GEIJSBEEK
6616 140th Place NE
Redmond, WA 98052-4649
Phone: 425-883-9390
Email: geijsbeek@verizon.net

Treasurer

ALEX HADDEN
#19 – 7651 Francis Road
Richmond, B.C. V6Y1A3
Phone: 604-272-2614
E-mail: alex-hadden@shaw.ca

Judging Chairman

DICKSON PRESTON
Seattle, Washington

History Chairman

LEN LUKENS
Portland, Oregon

Webmaster

DAVID HARRIS
Medical Lake, Washington

A Stamp Collector's Letter to Santa

Santa, dear old friend of mine,
Please this year bring very fine.
Less of those old candy canes,
Bring me lots of booklet panes!
Prexies, airmails, U.S. One,
These to me are much more fun.
TIPEX, CIPEX, FIPEX, please,
In my stock I'd like these.
No more socks or ties galore,
I need hinges, bring me more!
Sitting by my nice warm fire,
I could use a magnifier.
Santa, now just two more hints,
Bring me Kansas overprints!
Mint or used with cancellation,
They'll all help my celebration.
Flag sheets, White Plains cause me joy,
Just this once my dear old boy;
Bring me what I long to touch,
One small Invert means so much!
Merry Christmas, Santa dear,
I've been good the whole long year.
So bring me Zeps and Penny Blacks,
And everything my album lacks!

— Author unknown

Seasons Greetings, 2011!



“Repatriated” Mail from Alberta



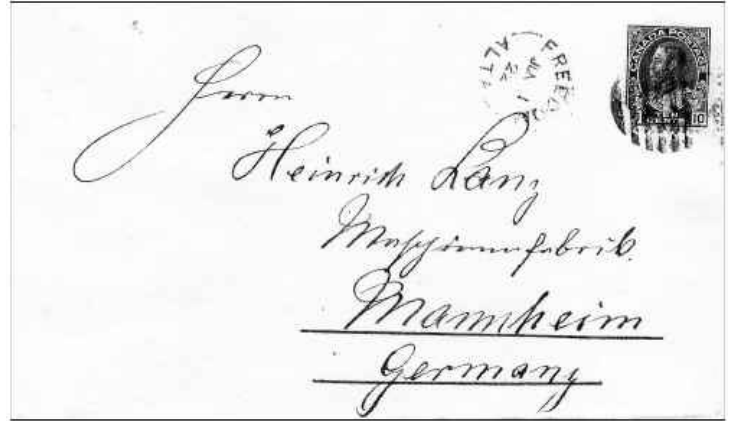
1912 Standard, Alberta to Denmark

— *By R. Parama*

This article is about what I call “repatriated mail.” Such repatriated mail was typically sent overseas and has in one way or another found its way back to Alberta, to reside in collections. Repatriated covers originally sent to English-speaking countries such as the U.S.A. and the United Kingdom are pretty common. However, covers repatriated from non English-speaking countries seem to be quite a challenge as few find their way back to Canada. But the few that are found are often most interesting because they illustrate the rich heritage of Alberta’s settlement.

The first example, above, is a cover, no doubt once containing a letter. It was posted at Standard, Alberta, late in 1912 and sent to Denmark. Many Danes settled around the area of Standard, and also to the north and east of Standard. Many had originally settled in the U.S.A. and then relocated to the community of Dana as part of a land scheme. When I was boy, my parents would sometimes drive by the community of Dalum about six miles south of Wayne. It was well known that the residents of the Dalum community were of Danish background. At the time I wondered if Dalum had a post office (it never did) and I have since learned that the locality of Dalum came about more or less as an expansion of the Danish community of Standard.

In 1912 Standard was just beginning to blossom as a community as the Canadian Pacific Railway had arrived just the year previous. The above cover showed the Danes of Standard had close ties with their homeland. Letter mail from Canada to countries such as Denmark are quite collectable, not only for their postmarks but also for the example postal rate. This cover in is typical of the 5¢ Universal Postal Union letter rate, in effect until October 1 1921. It is a nice example of repatriated mail.



June 1, 1922 Freedom, Alberta to Germany

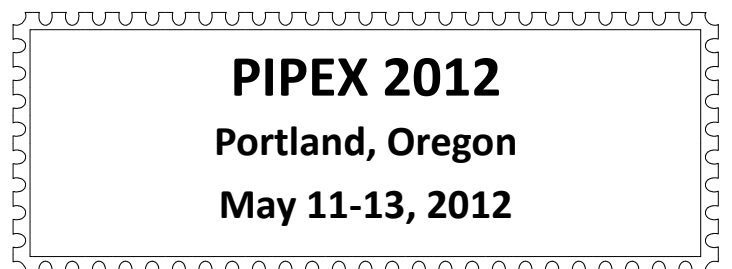
The next cover, shown above, was mailed from Freedom, Alberta on JUN1/22 (June 1, 1922). It too is repatriated. Like Standard, the name Freedom does not give any hint of the ethnic origins of the settlers in the area, but its former name does. The area around Freedom was largely settled by Germans. In fact, the Freedom post office was originally called Dusseldorf; the name changed to Freedom on January 1, 1919, just after the Great War.

Mail from Canada to Germany in this period is not too difficult to find, even though it was suspended during the Great War. However, this item is very collectable for the single use of the 10¢ plum Admiral stamp for the UPU rate, which became 10¢ on October 1, 1921.

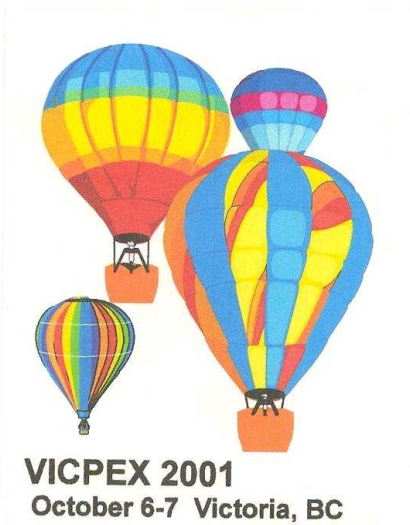
Beginning in February 1922, the colour of the 10¢ Admiral stamp was changed from plum to blue to comply with UPU colour guidelines. Obviously the Freedom post office still had some supplies of the 10¢ plum when this cover was posted in June. The postal route to Dusseldorf / Freedom was thought to have been from Westlock via Rossington from about 1914 to June 1, 1927.

The sender of the above cover was O. Preuss. Mr. Preuss ran a small cheese factory at Freedom. The Preuss family, originally, from Germany, arrived in the Dusseldorf area in 1911 or 1912, after a few years in the U.S.A. He was one of the early settlers of the area. It is another “repatriated” cover.

— *Reprinted from The Edmonton Stamp Club Bulletin, volume 100, number 8, August 2011.*



Federation clubs, Part 3: Greater Victoria Philatelic Society



2000. Dr. Don Shorting was the chairman for the 1986 and 2000 shows.

In 1982, the club hosted the 54th annual convention of the Royal Philatelic Society of Canada.

As the Greater Victoria Philatelic Society grew, they moved their meeting places from time to time. Past meeting locations have included the old Orange Hall on Courtney Street, the Inn on Cook Street, and the Carnarvon Park Pavilion.

The society currently meets at the Windsor Park Pavilion, at Windsor Road and Newport Avenue in

— By Jack Isaacson

The Greater Victoria Philatelic Society is one of three stamp clubs in British Columbia's capital of Victoria. The other two clubs are the Vancouver Island Philatelic Society and the Muffin Breakers Stamp Club. A fourth one, the Sidney Stamp Club, is in nearby Sidney.

The Greater Victoria Philatelic Society is 72 years old this year. In May of 1939, Frank Dymont and his wife Ivy hosted a meeting in their home to discuss forming the society. A small group of collectors attended that first meeting. The society's goal was to support philately by collecting and exchanging stamps and encouraging fellowship among the members.

The first officers were President Audrey Bastin, Vice President Theresa Wragg, and Secretary-Treasurer Ellen Bagshaw. The group first met on the second Friday of each month in the Women's Institute Hall at 635 Fort Street.

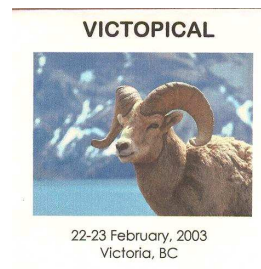
In 1958, the Greater Victoria Philatelic Society became affiliated with the Royal Philatelic Society of Canada. In recognition, they received a plaque which they now use as their "Philatelist of the Year Award."

The Greater Victoria Philatelic Society has hosted many large shows over the years. In 1958, they hosted the Royal Philatelic Society Exhibition. The highlight of this event was the "Queen's Collection," which was in the Court of Honour. VICPEX 1966 was the largest stamp exhibition the society has hosted. It was held at the Empress Hotel and featured 466 frames of exhibits. Lester Small was the show chairman and Dr. Pearce was the chief judge.

The Greater Victoria Philatelic Society has hosted several PIPEX shows, in 1975, 1986, and most recently in

Oak Bay, on the third Friday of each month. Current officers include President Lee Dowsley, Secretary Ed Lewis, Treasurer Tony Stipkala, and Vice Presidents Firmin Wynnells and Rick Deegan. Don Shorting is the auctioneer and Jack Isaacson is the newsletter editor. John Pollard and Larry Margetish are the refreshment coordinators. According to member Robin Clarke, "It's a good group. We usually get around 35 to 40 at each meeting, always a short business meeting, a programme of some sort, coffee and an auction of around 60 lots."

The Greater Victoria Philatelic Society hosts two different shows, VICPEX and VICTOPICAL. Members also like to attend shows in neighbouring communities. According to the most recent issue of their newsletter, *The Stamping Ground*, in August, 14 of their members traveled to Sequim, just across the Strait of Juan de Fuca in Washington State. There they attended the show of Strait Stamp Society.



VICTOPICAL 2003 show cover

Adventures in China



— By Duff Malkin

I came across this postal card, which was hidden in a labeled box of other colourful Chinese postcards, while unsuccessfully searching for aerogrammes.

Despite its rather worn, stained condition I decided to pay the \$20 asking price because of its overprinted postage and the written message on the reverse. Subsequently, I discovered the *Higgins and Gage Postal Stationery Catalogue* listed the card's value at \$16.

The overprints indicate that the card was posted in Xinjiang, a vast, warlord- controlled territory cut off from the rest of the world by innumerable mountains and three significant deserts (Taklimakan to the south, the Moyyunkun to the northwest and the Gobi to the south and east). The Chinese refer to it as something along the line of “Sin Jin” usually spelled “Xinjiang” or “Xinjiang”. It has also been called Turkestan, Chinese Turkestan and Kashgaria, amongst other names. Urumchi, the place where the card was mailed, was also known as Urumqui, Urumqi, Urumtsi, Wulumqui, Tiwha, Tihua and Tihwa. Nestled near the Afghanistan border, it is the farthest Asian city from any ocean shore.

Now a bustling, vibrant city of some one-and-a-half to two million people, Urumchi enjoys a very colourful history. In 1911, the Manchu dynasty was overthrown and the Chinese Republic was set up in a rather hodgepodge fashion. Although technically under Chinese control, Xinjiang enjoyed a large degree of personal autonomy. While the Chinese Republic outlawed the opium trade by 1911, it remained legal in Xinjiang up to 1935. By some written accounts, Xinjiang was literally sinking in opium. There are credible references to its high officials being addicts — including the warlord in power at the time that this particular postal card was mailed!

Beginning about 1916, all mail in Xinjiang was censored. This censorship continued right up to 1949.

Travelers also faced restrictions, as any visit to Xinjiang required the warlord's permission, and he was not too inclined to give it.

One method of skirting mail restrictions was to go to the appropriate local official to get the postal chop in the morning before the official found his opium pipe, so he would be distracted in his duties. At other times, any officious looking document with a large chop on it could do the trick, as literacy amongst the troops was not very high.

The 4¢ red postal card was issued in 1923 and was used to pay the postage for postcards going to China. In 1932, some of the other Xinjiang postal card rates were 1¢ for local area post office delivery, 2¢ for delivery in Xinkiang, 3¢ for parts of Sinkiang and Mongolia and 12¢ for overseas delivery. The overseas postcard rate was also the standard in the rest of China. This particular card has the corrected second overprint where the characters are all correctly aligned. The 5¢ re-engraved claret stamp also has the second overprint and the stamp was still current, even though it was first issued in 1924. The 3¢ stamp is the older one with the corrected overprint (issued circa 1916-19). It does not have the re-engraved design.

The postcards (and all mail destined for China) had to travel west to Chuguchak, cross over into Russia by *telega* (a three-horsed vehicle) take another vehicle down to Sempalatisk and catch the Trans-Siberian Railroad to Vladivostok from where they would be shipped to China. They traveled by horse and cart in Sinkiang and were contracted out by the post offices to people who would take the mails from place to place. It was, all things considered, a surprisingly efficient operation and mail could travel 1,000 miles from Urumchi to Kashgar in about a week.

These carts could also accept human cargo and there are a few western accounts of passengers briskly bumping along in all kinds of weather. The roads did have some shelters because one would sometimes need to seek refuge in them, or risk being blown off the road and down the mountainside in the dead of winter.

The vehicle used to take the mails and passengers to the railroad was referred to as a bus, but it was really a truck and most of the passengers got to ride with the mail in its open back in all kinds of weather and temperatures ranging from 30°F to -30°F. At various points in time they would be jostled by extra bags of mail being tossed on the bus or by extra passengers clambering aboard. It was a bumpy overnight journey, and they utilized the mail sacks to sit and rest upon. These transit modes may explain the rather roughed-up appearance of the card.

There is little available information on Xinjiang postal material simply because there hasn't been much made

available for study. When the Xinjiang mails arrived, whether in Xinjiang, Mongolia, China or in foreign lands, chances were good that the covers were ruined. The period was not exactly known for cover-collecting which was then in its infancy and more often than not the stamps were simply soaked off their backing and stuck into a collector's stamp book. Catalogue listings have helped somewhat, but they are often maddeningly short on detail.

In terms of cataloguing, the H&G reference seems a bit general. The China Stamp Society number is PCI (SK) – 2, the Han catalogue # is 105 & the Basic Card number is PCI – 2.

This article was reprinted from the fall 2008 issue of the BC Philatelic Society Newsletter. In July 2009, Xinjiang was the scene of violent ethnic riots that killed nearly 200 people. The Chinese government responded harshly to the violence, executing nine of the rioters for crimes including murder and arson, according to the state-owned China News Service.



See page 5 for a portrait of the Greater Victoria Philatelic Society, which meets at the Windsor Park Pavilion, at Windsor Road and Newport Avenue, in Oak Bay, on the third Friday of each month.

The society's recent **VICPEX 2011** show included the following award winners:

Gold

Gray Scrimgeour won a gold, the Clarke Horning trophy, and a RPSC silver medal for *Letter Rates to Vancouver Island and British Columbia: 1858-1900*. Rick Fleet won a gold, the Centennial trophy, and a RPSC gold medal for *Law Stamps of British Columbia*. David Foreman won a gold and a RPSC bronze medal for *A Selection of Straits Settlements, Malay States and British Borneo: 1867-1907*. Brian Atkins won a gold and the Eric Hamber trophy for *Air Post Exhibition (APEX) London 1934*. Vernon Richards won a gold and the Gerald E. Wellburn trophy for *Liberia: The Sports Issue*. Jack Isaacson won a gold and the Lester Small trophy for *Postal History*.

Vermeil

Robert Toombs won a vermeil for *India to Canada Air-mail via the Persian Gulf: 1938-1941*. Vermeil awards were also won by Robert McGuinness for *Canada Trust Nature Seals*, and Peter Jensen for *Allied Nations Mail—Czech Forces in England*.

Silver

Henry Niezen won a silver and the Most Popular Display award for *Stamp Cards*. Rev. Cedric Jones won a silver and the W. (Bill) Sach Memorial trophy for *Railway Cancels of Western Canada*. Robin Clarke won a silver for *The RMS Empress of Russia*. Rick Deegan won a silver and the Frank Dymont Memorial trophy for *For Valour — The Victoria Cross*.

Youth exhibits

Navinder Hundal (age 10) exhibited *Monarchy & Olympics*.

Royal *2012* Royale
Edmonton, June 1-3, 2012
West Edmonton Mall
Celebrating the life of Sir Sam Steele of the Northwest Mounted Police and 100 years of organized philately in Edmonton
For more information see www.royal2012royale.com

Inland Northwest Philatelic Day
Moses Lake, WA, April 14, 2012
Inland Northwest Philatelic Day will again be held in Moses Lake, Washington on Saturday, April 14, 2011 at the Best Western Hotel. The event is partly sponsored by the Northwest Federation of Stamp Clubs, with the involvement of philatelists from around Washington State. It includes speakers, an auction, and meals. For those arriving on Friday, April 13, a hospitality room opens at 5:30 PM. Rooms are \$70 per night.
For more information, see the Northwest Federation website: <http://www.nwfedstamps.org/>.

PIPEX 2012 Exhibit Prospectus

An APS World Series of Philately (WSP) Event

May 11, 12, 13, 2012 at the Doubletree by Hilton Hotel in Portland, Oregon

Sponsored by the Northwest Federation of Stamp Clubs

Hosted by the Oregon Stamp Society

Convening Organizations: WE (Women Exhibitors), SAS/O, Poster Stamp Collectors Club

See www.pipexshow.org/ for details on the show.

Important PIPEX 2012 Dates

Action	Latest Date
Receipt of applications from Convening Societies	1 April, 2012
Receipt of applications from other exhibitors	11 April, 2012
Receipt of final title and/or synopsis pages	15 April, 2012
Receipt of mailed-in exhibits	15 April -1 May, 2012
Hand delivery of exhibits (3 p.m. to 7 p.m.)	10 May, 2012
PIPEX open to public 10 a.m. to 6 p.m.	11 May, 2012
PIPEX open to public 10 a.m. to 6 p.m.	12 May, 2012
PIPEX open to public 10 a.m. to 4 p.m.	13 May, 2012
Take down of exhibits after 4 p.m.	13 May, 2012
Return mailing of mailed-in exhibits	14 May, 2012

A. Exhibitors:

- Any collector, regardless of residence or club affiliation, is eligible to enter a competitive exhibit by conforming to the requirements of this prospectus.
- All competitive exhibits must be the bona fide property of the exhibitor.

B. Exhibit Classes:

- a. **GENERAL OPEN CLASS** is open to any competitive exhibit except those eligible for either the youth or one-frame class. The General Open Class shall be divided into the following sections:

Section 1 POSTAL:

Traditional, Postal History, Postal Stationery, Aerophilately, Astrophilately, First day Covers in the Postal class

Section 2 REVENUE:

Traditional Revenue, Fiscal History

Section 3 THEMATIC

Section 4 ILLUSTRATED MAIL:

Advertising, Patriotic and Event Covers, Cacheted First Day Covers, Maximaphily

Section 5 CINDERELLA

Section 6 DISPLAY

Section 7 PICTURE POST CARDS

Section 8 ONE FRAME CLASS

- b. **YOUTH CLASS** is open to exhibitors who will be under the age of 19 as of May 11, 2012. Entry applications for this class shall include a statement, endorsed by an adult, that the entry is the property of, and was prepared by, the entrant.
- c. **ONE FRAME CLASS** – only 12 such exhibits will be accepted with preference given to the exhibits from members of the convening organizations. The jury may reclassify, without recourse, any exhibit they believe would benefit from reclassification.
- d. **FRAMES** — Each frame will hold sixteen (16) 8½" x 11" pages. For multi-frame exhibits there is a minimum of three and a maximum of ten frames per exhibit. Youth class exhibits may be a minimum of one frame and a maximum of five.

C. Entry:

- An individual exhibitor may submit more than one entry. In the event the number of entries exceeds the available space, at most only one multi-frame and one single-frame exhibit will be accepted from each exhibitor.
- All exhibits shall be entered by class and section on the official entry form provided by the PIPEX Exhibit Committee. The correct fees shall accompany the entry form.
- Entries will be accepted up to April 11, 2012 (April 1, 2012 for exhibits from convening societies), or until all available space has been filled if that event should occur earlier.
- Receipt of entries will be promptly acknowledged. A certain, defined number of frames are administratively reserved for the convening organizations. Therefore, some entries from exhibitors who are not members of convening organizations will be accepted provisionally. If the administratively reserved are not filled by April 1, 2012, they will be released to frame applications which have been provisionally accepted. The PIPEX Committee reserves the right to reject any entry, and to return the application together with related fees before the opening of the exhibition.
- Signing the official entry form denotes acceptance by the exhibitor of all requirements set out in this Prospectus.
- In order to assist the judges in preparing for the Exhibit, the PIPEX Exhibiting Committee **requires** that 8 copies of the title page or a one-page [maximum two sides] synopsis be included with the Entry Form. Entries submitted without 8 copies of a title page or synopsis will not be accepted. Revised title pages or synopses must be received by April 15 to the address shown in section F(c) below or by email to tonywaw@spiritone.com. Revisions must bear the annotation "Revised" and the date.

D. Frames and Pages:

- Exhibits will be displayed in frames that hold 16 album pages, maximum 8.5 inches by 11 inches in size, in 4 horizontal rows of 4 pages each. Oversize pages or poster displays (up to the frame dimensions) may only be accepted from exhibitors who have made arrangements in advance with the exhibits chairman.
- Pages shall be numbered consecutively on the back, bear the exhibitor's name on the back (not the front), and be enclosed in transparent sheet protectors.
- Each GENERAL OPEN CLASS exhibit is limited to a maximum of ten (10) frames. Each YOUTH CLASS exhibit is limited to a maximum of five (5) frames.

E. Exhibit Fees (in US funds):

- Open Class \$12 per frame.
- One Frame exhibits \$30 per entry.
- Youth Class free per frame – Free.
- **Note: If the exhibit is to be returned to the exhibitor by the PIPEX Committee after the show, the full amount of return postage plus insurance must be remitted with the entry application.**

F. Delivery:

Exhibitors can deliver their exhibits in person or via an agent. Otherwise, exhibits should be sent via USPS registered mail or express carrier such as FEDEX. Other material should not be enclosed in the same package as the exhibit.

- Mailed exhibits must be shipped prepaid to be received by the PIPEX Committee between April 15, and May 1, 2012. Exhibits delivered by an exhibitor or an agent may be handed to the PIPEX Committee between the hours of 3 and 7 PM, May 10, 2012 at The Doubletree by Hilton Hotel Portland, provided that prior notice of such delivery intention is given to the PIPEX Committee.
- If the exhibit is to be mailed via USPS, it should be sent to:
Anthony S. Wawrukiewicz
2012 PIPEX Exhibit Chairman
PO Box 19568
Portland, OR 97280
- If the exhibit is sent via private carrier (e.g., FEDEX), it should be sent to:
Anthony S. Wawrukiewicz
2012 PIPEX Exhibit Chairman
3130 SW Wilbard St.
Portland, OR 97219

G. Exhibition Hours/Exhibit Return:

- The exhibition will open at 10 AM on May 11, 12 and 13. It will close at 6 PM on May 11 and 12, and at 4 PM on May 13.
- No exhibit or part thereof may be mounted, dismounted, or removed during official show hours, or while visitors are present in the exhibit area.
- Exhibitors or their agents, on providing proof of identity, may obtain their exhibit from the PIPEX Committee shortly after the close of the exhibition.
- Uncollected exhibits will be returned at the expense of the owner in the manner indicated on the official entry form. If no contrary instructions are given by the exhibitor, uncollected exhibits will be returned as soon after the show as possible by USPS Express Mail. Please allow sufficient time for processing before making inquiries.

H. Insurance:

- Exhibit owners must provide their own insurance.
- All reasonable precautions will be taken for safeguarding the exhibits while they are in the possession of the PIPEX Committee. The exhibit area and bourse will have 24-hour security guards.
- The exhibitor agrees that no responsibility of any kind or character shall attach to the Northwest Federation of Stamp Clubs nor to any officers or members of the same, nor to the Oregon Stamp Society or to any of its officers or members, nor to the PIPEX Committee or to any of its members, nor to the Portland Philatelic Exhibitions, nor to the Doubletree by Hilton Hotel Portland or its employees, for any loss or damage to any exhibit or material submitted in competition or non-competition, from any cause whatsoever.

I. Judging:

- A panel of accredited judges has been selected who will make decisions by deliberation and consultation among themselves, and whose decisions will be final.
- Judging will be in accordance with the current *APS Manual of Philatelic Judging*.
- Judges will be provided the exhibit title and/or synopsis pages to assist in their preparation.
- It is strongly recommended that exhibitors study the latest edition of the *APS Manual of Philatelic Judging*, available on the APS web site (www.stamps.org).

J. Awards:

- For the GENERAL OPEN CLASS the PIPEX Committee will place at the disposition of the judges, PIPEX gold, vermeil, silver, silver-bronze and bronze medals plus ribbons, certificates of award, certificates of appreciation and other awards, including those for the grand award and reserve grand award.
- For the SINGLE FRAME CLASS, judging will be based on five levels of awards with a grand award for the best single frame exhibit.
- Additionally, a number of special awards will be made available by convening societies and other philatelic entities.
- All awards will be granted in accordance with the merits of the exhibit, without regard to section. No award will be made if, in the opinion of the judges, the exhibits are of insufficient merit or do not meet the criteria of the donor organization.
- Awards not bestowed formally during the exhibition will either be delivered when exhibits are collected in person or mailed to the winner.

K. Ruling Authority:

Any and all questions that may arise concerning the exhibition which are not provided for by the requirements of this prospectus shall be decided by the PIPEX Committee in its sole and absolute discretion.

L. Questions

Send all correspondence to:
Anthony S. Wawrukiewi
2012 PIPEX Exhibit Chairman
PO Box 19568
Portland, OR 97280

Important reminder: 8 copies of either the title page or the synopsis must be submitted with this entry. Entries received without these copies of a title page or synopsis will be rejected. Revisions to the title page or synopsis must be received by April 15; revisions must bear the annotation "Revised" and the date.

PIPEX 2012 Exhibit Entry Form

 (Entry forms are also available at www.pipexshow.org)

Please complete by typing or in BLOCK letters

Exhibitor Name: _____

Address: _____ City: _____ Province/State: _____ Postal Code/Zip: _____

E-Mail Address: _____ Home Phone: _____ Work Phone: _____

Note: The PIPEX 2012 show program will indicate the name and resident province/state of exhibitors unless anonymity is requested. Pseudonyms, including "Anonymous", will be accepted.

Pseudonym if desired: _____

List club and society affiliations: ___WE ___SAS/O Other: _____

Previous awards (Local/Regional/National/International) for this exhibit: _____

For this exhibit:

Class: _____ Section: _____ No. of pages: _____ No. of frames: _____

Frame fee enclosed: \$ _____

Return postage enclosed: \$ _____

Total Enclosed: \$ _____

Title of exhibit: _____

Exhibit description for show program (Maximum of 25 words): _____

Important reminder: 8 copies of either the title page or the synopsis must be submitted with this entry. Entries received without these copies of a title page or synopsis will be rejected. Revisions to the title page or synopsis must be received by April 15; revisions *must* bear the annotation "Revised" and the date.

Delivery Options

I will personally deliver my exhibit to the Doubletree by Hilton Hotel Portland between the hours of 3 and 7 PM on May 10th.

My exhibit will be delivered by my agent (_____) to the same place and time as stated above

My exhibit will be sent by post or commercially, via _____, to the Exhibits Chairman by May 1st at the address to be found below.

Return Options

I will personally pick up my exhibit following the close of the PIPEX Show on May 13th, after 4 PM, at the Doubletree by Hilton Hotel Portland.

My agent (_____) will pick up my exhibit following the close of the PIPEX Show on May 13th, after 4 PM, at the Doubletree by Hilton Hotel Portland.

Please ship my exhibit to me via _____. \$ _____ is enclosed to cover return postage, or return postage will be enclosed with the exhibit.

All payments for frame fees and shipping shall be made payable to PIPEX and they with the entry forms shall be sent to Anthony S. Wawrukiewicz, c/o PO Box 19568, Portland, OR 97280. All payments shall be made in US funds. I have read the PIPEX exhibit rules and understand that I will be responsible for insuring my own exhibit. I will not hold the Northwest Federation of Stamp Clubs, the PIPEX Host Committee, and the Oregon Stamp Society, their officers, members, or employees, or the Portland Philatelic Exhibitions, or the Doubletree by Hilton Hotel Portland or its employees, liable for any loss or damage to my exhibit.

(Signature of Exhibitor)

Youth Class Only: Exhibitor's Birth date: _____ (Month /Day/Year) Adult Endorsement: "This entry is the property of and was prepared by the youth entrant named herein."

(Signature of Adult Sponsor)

PACIFIC NORTHWEST 2012 STAMP SHOWS / BOURSES

includes other major shows and holidays in bold

2011			Revised: December 11, 2011		
SHOW DATES					
FRI	SAT	SUN	SHOW NAME	Location	Type
		Jan-01	NEW YEARS DAY 2012 (Sunday)		
Jan-20	Jan-21	Jan-22	SANDICAL 2012	San Diego, CA	WSP show
		Jan-29			
Feb-03	Feb-04	Feb-05	APS AmeriStamp Expo 2012	Sarasota, FL	WSP show
Feb-03	Feb-04	Feb-05	ORCOEXPO 2012	Garden Grove, CA	show
		Feb-12	Fenwick	Renton	bourse*
		Feb-19	Sno-King Stamp Club Show	Everett	bourse
		Feb-20	PRESIDENT'S DAY (Monday)		
Feb-24	Feb-25	Feb-26	ARIPEX 2012	Mesa, AZ	WSP show
	Feb-25	Feb-26	APEX 2012	Anchorage	show
	Mar-03	Mar-04	NWSDA Show	Seattle	bourse*
	Mar-17		STAMPEX - Spring 2012	Salem	bourse
	Mar-17	Mar-18	VICTOPICAL 2012	Victoria	show
		Mar-18	SPRINGPEX 2012	Eugene	show
	Mar-24	Mar-25			
	Mar-31	Apr-01	Vancouver Stamp Fair	Vancouver, BC	bourse
		Apr-08	EASTER		
		Apr-08	Fenwick	Renton	bourse*
	Apr-14	Apr-15	SOPEX 2012	Medford	show
	Apr-14		Inland Empire Philatelic Day	Moses Lake	seminar
	Apr-21	Apr-22	Evergreen (Boeing) Stamp Club Show	Kent	bourse
	Apr-21	Apr-22	Bellingham Stamp Club Show	Bellingham	bourse
		Apr-29	OLYMPIA ROUNDUP	Olympia	bourse
Apr-27	Apr-28	Apr-29	WESTPEX 2012	San Francisco, CA	WSP show
		May-06			
May-11	May-12	May-13	PIPEX 2012	Portland	WSP show
May-18	May-19	May-20	Rocky Mtn Stamp Show 2012	Denver	WSP show
	May-26	May-27	GESSPEX	Bellevue	bourse
		May-28	MEMORIAL DAY (Monday)		
Jun-01	Jun-02	Jun-03	ROYAL (RPSC) 2012	Edmonton	Nat'l show
		Jun-10	Fenwick	Renton	bourse*
		Jul-04	INDEPEDENCE DAY (Wednesday)		
Jul-06	Jul-07	Jul-08	ASDA Northern California Show	Burlingame	bourse
		Jul-15			
	Jul-21	Jul-22	Evergreen (Boeing) Stamp Club Show	Kent	show
Aug-10	Aug-11	Aug-12	AMERICOVER 2012	Irving, CA	WSP show
	Aug-11		Strait Stamp Show	Sequim	show
		Aug-12	Fenwick	Renton	bourse*
Aug-17	Aug-18	Aug-19	APS Stamp Show 2012 (4 days)	Sacramento, CA	WSP show
		Aug-26			
Aug-31	Sep-01	Sep-02	BNAPEX 2012	Calgary	show

PIPEX 2012 – May 11-13 in Portland
PIPEX 2013 – May 10-12 in Portland

PIPEX 2014 – May 9-11 in Portland
PIPEX 2015 – May 8-10 in Portland