

# Federated Philatelist

Newsletter of the Northwest Federation of Stamp Clubs

No. 199, April, 2012

## 1930s-60s Spokane Newspaper Advertising Covers



— By Larry Mann

The above 1938 cover is a colorful, and quite extravagant, advertisement for two Spokane newspapers. It pictures two buildings which are the “enlarged home of the Cowles publications,” the company that published the *Spokesman-Review* and *Spokane Daily Chronicle*. The tower of the Review Building, on the left, shines a bright golden beacon to “cover Spokane and Inland Empire like the sunshine.” The beacon touches the earth in the shape of a heart, and the Inland Empire region is described as the “heart of the Pacific Northwest” and “the American Wonderland.”

The term “Inland Empire” referred to an area from southern British Columbia south into the interior of Oregon, west to the Cascade mountains, and east to the Rockies in Montana; today it is more commonly referred to as the “Inland Northwest.”

The Cowles Publishing Company still prints the morning *Spokesman-Review*, although the evening *Spokane Daily Chronicle* ceased publication in 1992. The

company dates to the early years of Spokane’s history, and its founder, William H. Cowles, Sr., started the *Spokane Falls Review* in 1883. The *Spokane Falls Chronicle* was founded two years earlier, in 1881, and was later purchased by Cowles. The *Spokesman*, published from 1890-93, merged with the *Review* to form the *Spokesman-Review* in 1894. The city’s name was officially changed from Spokane Falls to Spokane in April 1891.

— Continued on page 2

### In this Issue

Spokane Newspaper Advertising Covers.....	1
From the Editor’s Desk .....	3
PIPEX 2012 information.....	4
\$5.00 Prexie Registered Letter.....	5
Unique Stamps for Kids.....	6
Sno-King stamp Club.....	7
2012 Show Schedule.....	8



## Spokane advertising covers (continued from page 1)



1943 *Spokesman-Review* and *Spokane Daily Chronicle* advertising cover. A 2¢ Prexie pays the local rate within the city of Spokane. It was probably used for a payment. **Left:** An enlargement showing the Review and Chronicle buildings.

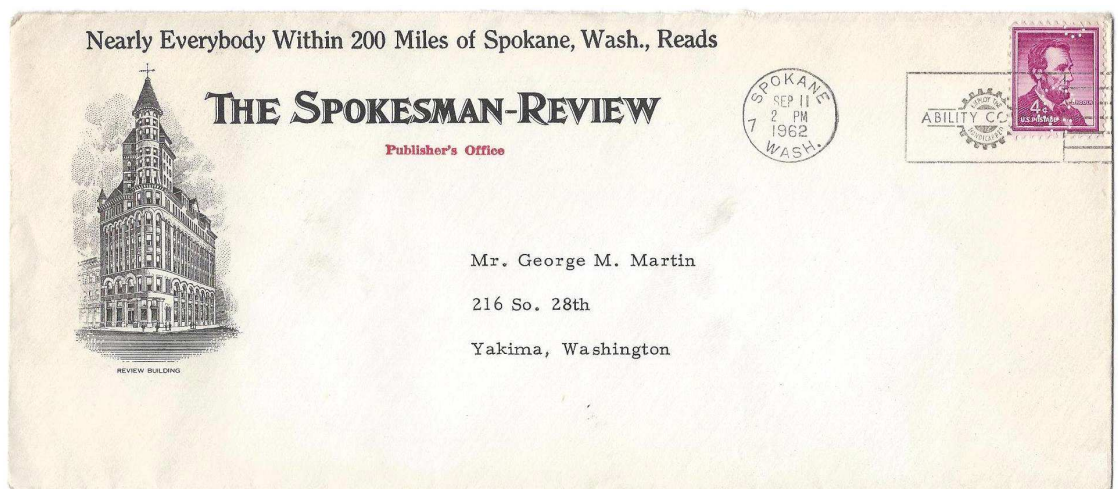
Although the above cover is from 1943, the automobiles probably date the engraving to the 1920s. The engraving on the 1938 cover on page one shows 1930s automobiles.

At the left of the engraving is the 1891 Review Building, on the southeast corner of Riverside and Monroe, which is still the home of the *Spokesman-Review*. Designed by architect Chauncey B. Seaton, the red brick building is six stories high, and topped by a five-story tower that once made it the tallest building in Spokane.

At right is the adjacent Chronicle Building, on the northeast corner of Sprague and Monroe, where the

*Spokane Daily Chronicle* was once published. The building still exists, though it is no longer used by the Cowles Publishing Company. This 1923 building has a white terra cotta facing with gargoyles on the roof. It was designed by Kirtland K. Cutter (1860-1939), probably Spokane's most famous architect. Cutter also designed the Davenport Hotel and the Spokane Club in Spokane, as well as the Rainier Club in Seattle.

The three covers are interesting advertisements for two longtime Spokane newspapers and also illustrate two prominent Spokane landmarks.



1962 *Spokesman-Review* advertising cover. The 4¢ Lincoln has a “CP” perfin for the Cowles Publishing Company

The above 1962 cover was sent from the Publisher's Office of the *Spokesman-Review* to George M. Martin of Yakima. Martin was a well-known philatelist for many years and was added to the Northwest Federation of Stamp

Clubs's “Role of Distinguished Philatelists” in 1962. The claim on the cover that “nearly everybody within 200 miles of Spokane” reads the *Spokesman-Review* is only slightly less extravagant than the cover on page 1.

## The Federated Philatelist

### Editor

LARRY MANN  
655 Washington Place SW  
Mukilteo, WA 98275  
425-514-8949  
Larrymann02@aol.com

## Northwest Federation of Stamp Clubs

<http://www.nwfdstamps.org>

### Chairman of Board of Directors

LAWRENCE CLAY  
PO Box 6228  
Kennewick, WA 99336-0228  
Phone: 509-735-3731  
E-mail: [lclay3731@charter.net](mailto:lclay3731@charter.net)

### Board of Directors

ERIC A. RANGER  
New Westminster, British Columbia

KEITH SPENCER

Edmonton, Alberta

LAWRENCE CLAY  
Kennewick, Washington

LEONARD LUKENS  
Portland, Oregon

### Executive Secretary

Vacant position

### Treasurer

ALEX HADDEN  
#19— 7651 Francis Road  
Richmond, B.C. V6Y1A3  
Phone: 604-272-2614  
E-mail: [alex-hadden@shaw.ca](mailto:alex-hadden@shaw.ca)

### Judging Chairman

DICKSON PRESTON  
Seattle, Washington

### History Chairman

LEN LUKENS  
Portland, Oregon

### Webmaster

DAVID HARRIS  
20908 W. Bannock Ave.  
Medical Lake, Washington  
509-299-7543  
Email: [sqpiano@gmail.com](mailto:sqpiano@gmail.com)

## From the Editor's Desk

Spring is the time for stamp shows around the Pacific Northwest. PIPEX returns after a year without the Federation's annual show. This year's PIPEX will be in Portland, Oregon on May 11-13. This will be the first in a run of four consecutive PIPEX shows in Portland, from 2012 through 2015.

Other shows and events around the Northwest include the BNAPS Spring Meeting in Vernon, British Columbia on May 4-6 and the big Royal \*2012\* Royale national show in Edmonton, Alberta on June 1-3.

Be sure to check the show schedule on page 8 for other Northwest shows and events. They include a Fenwick bourse in Renton, WA on April 8 and June 10, two April 21-22 shows in Kent and Bellingham, WA, SOPEX 2012 in Medford, OR on April 14-15, the Olympia Roundup on April 29 in Olympia, WA, GESSPEX in Bellevue, WA on May 26-27, and the Victoria Stamp & Coin Fair in Victoria, BC on May 27. Inland Empire Philatelic Day will also be in Moses Lake, WA on April 14.

It should be a good spring for collectors!

### BNAPS Spring Meeting Vernon, BC, May 4-6

The Village Green Hotel in Vernon will host the annual meeting of the Pacific Northwest Regional Group of BNAPS. Ken Mather, well known Vernon area historian, will entertain at the annual banquet on Saturday evening. He is the author of books on area history, particularly related to cowboys.

The meeting registration fee, including the banquet, is \$75 for BNAPS members. To register, contact Cecil Coutts at 34820 McLeod Ave., Abbotsford, BC V3G 1G9 or [cec.coutts@telus.net](mailto:cec.coutts@telus.net). His phone number is 604-852-9014.

Rooms at the hotel are \$69 per night. To make hotel reservations, phone 1-800-663-4433 or by email at [reservations@villagegreenhotel.com](mailto:reservations@villagegreenhotel.com).

### Royal \*2012\* Royale Edmonton, June 1-3, 2012 West Edmonton Mall

Celebrating the life of Sir Sam Steele of the Northwest Mounted Police and 100 years of organized philately in Edmonton

For more information see

[www.royal2012royale.com](http://www.royal2012royale.com)



# PIPEX 2012, May 11-13



PIPEX comes to Portland on May 11-13. After not having a show in 2011, this will be the first of four PIPEX shows in Portland from 2012 through 2015.

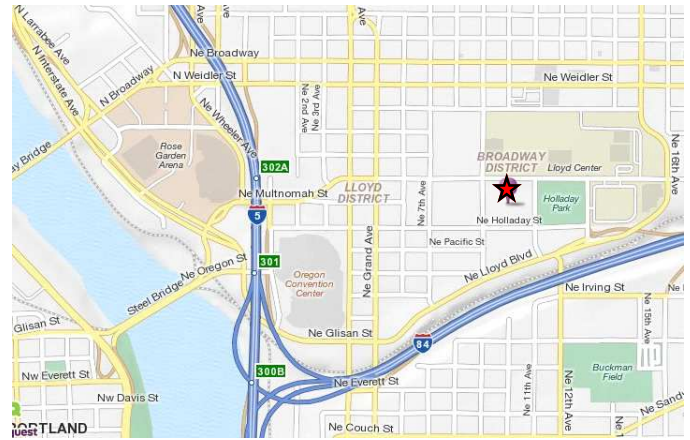
PIPEX will be held at the Doubletree by Hilton Hotel at 1000 NE Multnomah Street. The hotel is situated in the heart of downtown Portland, within walking distance of the Memorial Coliseum, the Rose Garden Arena, the Lloyd Center Shopping Mall, the Oregon Convention Center, and downtown entertainment.

Standard guest rooms are \$99.00 per night, single or double occupancy, or \$109 for premium guest rooms. Call (503) 281-6111 to make reservations.

It promises to be a great show, with 35 dealers, 4000 pages of exhibits, and meetings by the Women Exhibitors (WE), the Society of Australasian Specialists/Oceania, and the Poster Stamp Collectors Club. The following organizations will have tables at the show: the US Postal Service, Oregon Stamp Society (OSS), Salem Stamp Society, American Philatelic Society (APS), Northwest Philatelic Library, Northwest Postal History Society, American Topical Association (ATA), SEAPEX, Northwest Chapter American Air Mail Society, and the Universal Ship Cancellation Society Columbia Chapter. PIPEX will also include a youth table and an auction by Harmer-Schau Auctions. Exhibits will be judged by a panel of six judges accredited by the APS: Dr. Peter McCann of Florida, a former APS President, will be the chief judge. Other judges will include Darrell Ertzberger from Virginia, Elizabeth Hisey from Florida, Jeffrey Shapiro from Massachusetts, Arlene Sullivan from British Columbia, and Peter Thy, an apprentice judge from California.



May 11, 12, 13, 2012  
Hours: Fri.-Sat. 10AM-6PM, Sun. 10AM-4PM  
Free Admission  
The Doubletree by Hilton Hotel Portland, OR  
35 Dealers, 4000 pages of Exhibits  
Meetings, Seminars, Harmer-Schau Auctions NW  
Cachetmakers Bourse, USPS Sales Booth  
Guest Societies: SAS/O, Women Exhibitors (WE)  
See the PIPEX 2012 web site for more details [www.pipexshow.org/](http://www.pipexshow.org/)



## Driving directions:

- From City Center: Go East on SW Alder Street to the Morrison Bridge. Stay in the left lane over the bridge and merge left to I-5 North.
- Take Exit 302A to Weidler Street. Go right on Weidler to NE 9th Avenue. Right on NE 9th Avenue to Multnomah. Hotel entrance will be on the left.

## TriMet's MAX Light Rail:

- From any Downtown Portland MAX station, board the MAX Red line to Airport to the Lloyd Center/NE 11th Avenue MAX station.

For more PIPEX information, visit

<http://www.pipexshow.org/>.

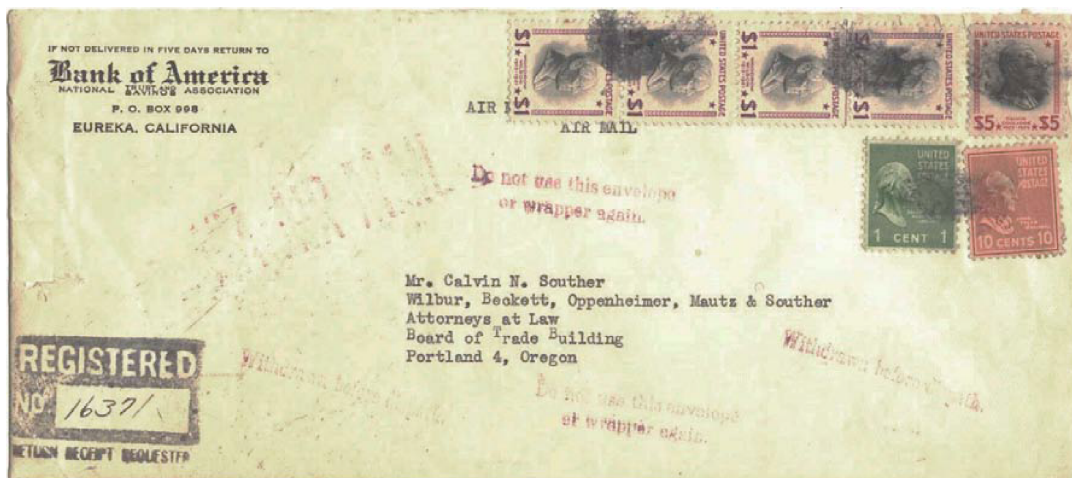
## NWFSC Annual Meeting

The annual meeting of the Northwest Federation of Stamp Clubs (NWFSC) will be held on **Saturday, May 12** from 8 AM to 10 AM in the Morrison Room of the Doubletree by Hilton Hotel, 1100 Multnomah Street, Portland, OR.

The purpose of the meeting is the election of officers and a discussion of the long-term goals and mission of the NWFSC. Each member club of the NWFSC is entitled to one vote on any official action taken at the meeting. All club delegates will be asked to sign in at the meeting. Any interested person is welcome to attend.

If you have any questions or comments prior to the meeting, please contact Lawrence E. Clay, NWFSC Chairperson, at [lclay3731@charter.net](mailto:lclay3731@charter.net) or PO Box 6228, Kennewick, WA 99336.

# \$5.00 Prexie Registered Letter Withdrawn Before Dispatch



All was not perfect at the Eureka post office that day. For one thing the purple stamp pad was badly in need of fresh ink, so all the markings, including "VIA AIR MAIL" and the registry postmark on the back, are very feebly struck. For another, the "Withdrawn" marking was misspelled, so that it actually reads **With-drawn before dispatch**.

— By Dickson Preston

On 12 January 1948, some hapless individual from the Eureka, California branch of the Bank of America presented a high-value letter at the local post office. The registered letter was intended to go by air to Portland, Oregon, and a return receipt was requested. The total postage of \$9.11 may be broken down as follows:

Airmail postage, 2 x 5 cents per ounce	.10
Registration fee, minimum with indemnity	.20
Return receipt fee, showing where and to whom delivered	.31
Supplementary fee, 1st \$1,000	.10
Supplementary fee, next \$56,000 @ 15 cents per \$1,000 for Zone 4	8.40
<hr/>	
Total	\$ 9.11

Note that the 31-cent return receipt fee has been inferred. Since all the other fees are multiples of 5 cents, the normal 4-cent return receipt fee cannot produce the total of \$9.11, but the 31-cent fee can.

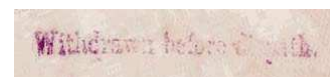
Later the same day the Bank elected to withdraw the letter from the mails before it had been dispatched from the Eureka post office. The procedure for doing so, as stated in Section 59.68 of the 1948 PL&R was followed, in part, by the postal clerk processing the request.

(1) **Before dispatch:** The sender shall write on his registry receipt "Withdrawn before dispatch," sign his name thereto, and surrender the receipt. The postal employee shall write or stamp "Withdrawn before dispatch" on the counterpart of the receipt in the registration book . . . and shall write or stamp the same words and imprint the postmark on the face of the article.

In the case at hand the clerk did stamp the words "Withdrawn before dispatch" on the face of the envelope, but he did not place a postmark there. He also added "Do not use this envelope or wrapper again," a marking normally appearing on articles returned because of an invalid address.



Date of posting



"Withdrawn before dispatch"

Did the bank get its \$9.11 postage back? According to the PL&R, "Application for postage paid on registered mail withdrawn before dispatch should be made to the Third Assistant Postmaster General, Division of Registered Mails." Section 35.9 explains the process of making such an application. Note that the passage reads "postage," that is, the 10 cents paid for airmail. The 1949 Postal Guide is less encouraging about the rest of the amount paid. Per Ch. XIII Art. 18,

After a registration receipt has been issued for a letter or parcel, the article is considered as having been registered and if withdrawn before dispatch no refund of registry fee, restricted delivery fee, or return receipt fee is ordinarily permissible.

So the bank could have recovered its 10 cents postage by applying to the Third Assistant Postmaster General's Office, but they were out of luck for the remaining \$9.01. That amount is substantial -- \$104 in 2011 dollars (see Bureau of Labor and Statistics CPI Inflation Calculator at <http://www.bls.gov/bls/inflation.htm>.) Perhaps another section of the Postal Guide describing who may request a withdrawal is relevant here: "Mail deposited by a person adjudicated of unsound mind may be withdrawn by a duly appointed guardian." I leave it to the reader to judge for himself whether this provision applies to whomever may have made the decisions which cost his employer, a bank at that, such a substantial amount of money.

— This article was reprinted with permission from the Fall 2011 issue, number 55, of *The Prexie Era*, the newsletter of the USSS 1938 Presidential Era Study Group.

---

# Unique Stamps for Kids

We are a new 501(C3) corporation, and have been operating recently under a Memorandum of Understanding (MOU) with the Northwest Philatelic Library and have supported similar arrangements with the San Diego Philatelic Library, Oregon Stamp Society, American Philatelic Society, SANDICAL, PIPEX and the Westside Stamp Clubs. In each case, one of our staff, usually our Executive Director, has been selected as their "Youth Coordinator" for that specific society, library, show, or club. Each of the non-profit corporations apparently has an IRS requirement to educate youth and serve in a charitable manner. In all cases whether they are a non-profit 501(C3) or not, we are providing that service for all these organizations. In return, we appreciate really great support and generous "in-kind" donations of stamps from their membership.

Our intent is to promote stamp collecting to kids and their philatelic mentors. We work closely with dealers, collectors, clubs, and corporate sponsors to safely and effectively provide those resources to kids and their parents for free. We have redefined "Stamp Pilgrims" and "Kidoware." "Stamp Pilgrims" are those youth that have taken our journey into a new world of stamp collecting. "Kidoware" is the bottom 15% of your closet and a grandparent's attic hoards, unsold items at club auctions and dusty boxes at stamp dealers. We remix both stamps on and off paper into a pirate's treasure hunt that's better than kiloware!

We find new homes for albums, catalogs and covers long discarded from an owner's collection. When a dealer sees a mess, we see a kid's goldmine of discovery. Although our direction is not to give kids single philatelic items with a market value over \$50, our kids have still found a C3, Kansas overprints on cover, and scarce 1924 Italian advertising issues to name a few. While only 4% of our kids collect dinosaurs on stamps, 15% of our kids do collect either stamped postcards, topical covers, perfins, pre-cancels, or seals. Each "Stamp Pilgrim" we bring into collecting is pre-registered with both a country-specific and topical collection.

This may be useful information for dealers at PIPEX. If you see a kid, he might actually know what topic and country he or she is collecting. If they don't know, welcome them to the show as someone we invited that is totally new to collecting. In our Stamp Nights or Saturday Collectors Corner meetings, our kids help each other! In 3 hours, 14-18 kids can sort through 25 pounds of Kidoware and all walk out sharing the results. Every time they find something that fits the topic or country collected by a person next to them they are encouraged to share.

In a recent visit, Ron Summer, a perennial PIPEX

Coordinator, visited one of our weekly Stamp Nights incognito and was registered as a "train" collector. Without participating in the "Kidoware" sort he was later handed a "Ron - Trains" stock sheet with 28 stamps picturing "trains" at the end of the evening, or ten "trains" per hour. When we invite families to a Stamp Night we offer alternate activities (crafts, etc. ) for the parents that brought the kids to a stamp event.

To date, UNIQUE STAMPS FOR KIDS, has offered a stamp collecting experience to 4,145 different kids, offered collections to 427 kids of which 385 currently have started stamp collecting with starter collections with a retail value of \$8,240. That means philately is successful in front of our kids 90% of the time for about \$25 per kid. In contrast, only 10% of the time will teachers and parents even allow their kids to participate in any free Stamp Event. So the biggest hurdle is getting parents and teachers to commit to stamp collecting as an educational resource if not one of the most popular hobbies in the world. The kids and XBOX are not the problem!

We have also started a UNIQUE STAMPS FOR KIDS stamp club exchange program. We work to meet with one teacher, one collector, and one dealer for each club. Their local dealer donates "Kidoware" as a charitable donation to UNIQUE STAMPS FOR KIDS from that foreign country and we then ship free US philatelic material to reciprocate. We have schools in China, Ireland, New Zealand, and the US that have already received or shipped out 65 pounds of free "Kidoware" supplies and educational materials under our new exchange program.

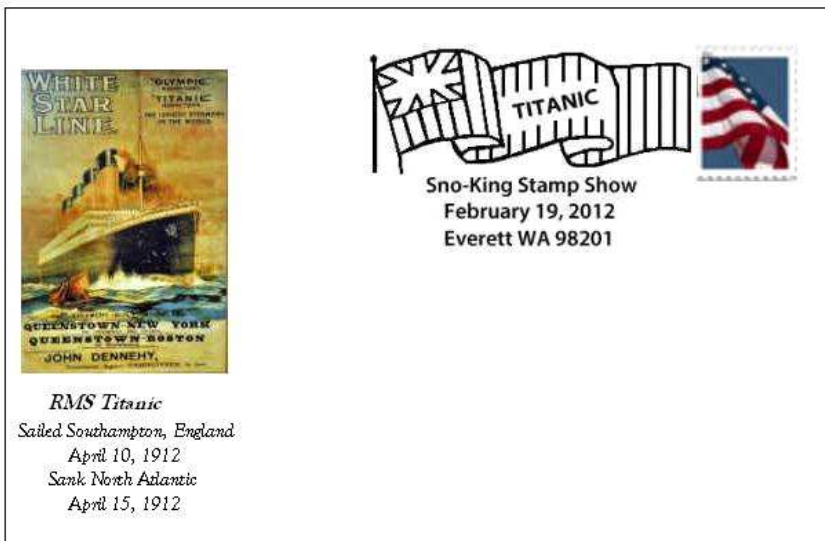
At our meetings with Stamp Pilgrims, each kid receives as many manila stock pages, older Bookman Catalogs (Thanks Mike Jaffe!), hinges, stamps, and albums as they need. At kids meetings, we never solicit or accept donations. We also meet with dealers away from shows as often as possible, so as not to interfere with their commercial enterprise. If you can't sell it or sort it without losing money or lowering your productivity, donate it to our kids!

Because we offer free educational stamp collecting events to children's hospitals, Ronald McDonald Houses, Shriner's Life Services, Boys and Girls Clubs of America, Boy Scouts of America, Girl Scouts, charter schools, public schools, private schools, and families identified by their local churches and community centers, we have also gained corporate sponsorship. That being said, we are always looking for volunteers, including dealers, that might want to help us with one event per year.

If anyone wants to invite, fund, volunteer, support, or donate a collection to UNIQUE STAMPS FOR KIDS please contact us at (503)-939-0544 or [pkumler@gmail.com](mailto:pkumler@gmail.com).



## Federation clubs, Part 5: Sno-King Stamp Club



2012 Sno-King Stamp Show cover commemorating the centennial of the sinking of the RMS *Titanic*

— By Larry Mann

The Sno-King Stamp Club serves collectors in the suburban areas of Snohomish and King counties, just north of Seattle.

The club meets twice each month, in Everett and Edmonds. The Everett meeting is on the second Wednesday of each month, from 7:30 to 9:00 PM, at the Snohomish County PUD on 2320 California Street. This meeting includes programs and occasional auctions. The Edmonds meeting is more informal, and includes mixtures with an opportunity to buy, sell, and trade stamps. This meeting is usually on the third Friday of each month, at 7:00 PM, in the library of the South County Senior Center at 220 South Railroad Avenue, just south of the Edmonds Ferry terminal. Sno-King Stamp Club has one meeting each month in July and August. The August meeting is the annual picnic, with a special holiday dinner in December.

The club has had a regular stamp show since 1989. The date has varied but has usually been in Everett on a Sunday in January or February. In recent years the show has been held at the Boys and Girls' Club in Everett.

Like many clubs, membership and attendance at meetings has decreased somewhat in recent years. The club is fortunate to have a group of officers and volunteers who keep the club going strong. These include Carol and Keith Edholm, who have held various offices over the years. For years, Carol led the Federation youth program and the organization *Youth Stamp Collectors*; both Carol and Keith made frequent appearances with a youth table at shows around the Northwest. Though Carol is no longer involved in working with young collectors, she is the club's current Program Chairman.

Current club officers include Secretary (and former President) Steve LaVergne; Treasurer (and former Secretary) Ray Anderson; Vice President Terry Ferrell, and President (and former Secretary, former newsletter editor, and current webmaster) Larry Mann. Kurt Lange is the editor of the monthly *Sno-King Stamp Club Philatelic News*.

Larry Mann is also the editor of the Northwest Federation publication, *The Federated Philatelist*.

The Sno-King Stamp Club was founded in 1960 by George Jackson. The Everett area had been without a stamp club since the Everett Stamp Club folded in the late 1940s. Jackson sent letters to local collectors on the APS membership list, inviting them to form a local club.

Four collectors attended the inaugural meeting in a private home in September 1960. The club grew rapidly. The membership doubled at the November 1960 meeting. By 1961, the club's roster hit double digits. Meeting at first in Edmonds, the club expanded to Everett in 1961. That year, it adopted the name Sno-King Stamp Club.

At first, the club met in homes and churches. Later, it moved its meetings to public libraries in Everett and Edmonds. In late 1962, it became a member of the Northwest Federation of Stamp Clubs. The Sno-King Stamp Club is also an APS chapter.

The Sno-King Stamp Club is a friendly group of collectors and visitors are always welcome. For more information about meetings and club activities, see the club website at <http://sno-kingstampclub.freehostia.com/>.



**Former and current officers from left:** former Treasurer Chuck Holtz; Program Chairman Carol Edholm; President Larry Mann; current Treasurer Ray Anderson; former Vice President Harry Reynolds; Newsletter Editor Kurt Lange. Harry Reynolds is also a former President of the Inland Empire Philatelic Society in Spokane.

## PACIFIC NORTHWEST 2012 STAMP SHOWS / BOURSES

includes other major shows and holidays in bold

2012			Revised: January 09, 2012		
SHOW DATES					
FRI	SAT	SUN	SHOW NAME	Location	Type
		<b>Apr-08</b>	<b>EASTER</b>		
		Apr-08	Fenwick	Renton	bourse*
	Apr-14	Apr-15	SOPEX 2012	Medford	show
	Apr-14		Inland Empire Philatelic Day	Moses Lake	seminar
	Apr-21	Apr-22	Evergreen (Boeing) Stamp Club Show	Kent	bourse
	Apr-21	Apr-22	Bellingham Stamp Club Show	Bellingham	bourse
		Apr-29	OLYMPIA ROUNDUP	Olympia	bourse
Apr-27	Apr-28	Apr-29	<b>WESTPEX 2012</b>	<b>San Francisco, CA</b>	<b>WSP show</b>
May-11	May-12	May-13	<b>PIPEX 2012</b>	<b>Portland</b>	<b>WSP show</b>
May-18	May-19	May-20	<b>Rocky Mtn Stamp Show 2012</b>	<b>Denver</b>	<b>WSP show</b>
	May-26	May-27	CESSPEX	Bellevue	bourse
		May-27	Victoria Stamp & Coin Fair	Victoria, BC	bourse*
		<b>May-28</b>	<b>MEMORIAL DAY (Monday)</b>		
Jun-01	Jun-02	Jun-03	<b>ROYAL (RPSC) 2012</b>	<b>Edmonton</b>	<b>Nat'l show</b>
		Jun-10	Fenwick	Renton	bourse*
		<b>Jul-04</b>	<b>INDEPEDENCE DAY (Wednesday)</b>		
Jul-06	Jul-07	Jul-08	ASDA Northern California Show	Burlingame	bourse
	Jul-21	Jul-22	Evergreen (Boeing) Stamp Club Show	Kent	show
Aug-10	Aug-11	Aug-12	<b>AMERICOVER 2012</b>	<b>Irving, CA</b>	<b>WSP show</b>
	Aug-11		Strait Stamp Show	Sequim	show
		Aug-12	Fenwick	Renton	bourse*
Aug-17	Aug-18	Aug-19	<b>APS StampShow 2012 (4 days)</b>	<b>Sacramento, CA</b>	<b>WSP show</b>
		Aug-19	Victoria Stamp & Coin Fair	Victoria, BC	bourse*
Aug-31	Sep-01	Sep-02	BNAPEX 2012	Calgary	show
		<b>Sep-03</b>	<b>LABOR DAY (Monday)</b>		
	Sep-08	Sep-09	NWSDA Show	Seattle	bourse*
	Sep-15		STAMPEX - Fall 2012	Salem	bourse
		Sep-16	FALLFEST 2012	Eugene	bourse
	Sep-22	Sep-23	APPLE HARVEST	Spokane	bourse
	Sep-22	Sep-23	VANPEX	Vancouver	bourse
	Sep-29	Sep-30	VICPEX	Victoria	show
	Oct-06	Oct-07	Tri-City Stamp Show	Richland	show
		Oct-07	Fenwick	Renton	bourse*
Oct-12	Oct-13	Oct-14	<b>SESCAL 2012</b>	Los Angeles	show
	Oct-20	Oct-21			
Oct-26	Oct-27	Oct-28	SEAPEX	Seattle	show
		Oct-28	OLYMPIA ROUNDUP	Olympia	bourse
	Nov-05	Nov-04			
Nov-09	Nov-10	Nov-11	<b>FILATELIC FIESTA (2012)</b>	<b>San Jose, CA</b>	<b>show</b>
	Nov-17	Nov-18			
		<b>Nov-22</b>	<b>THANKSGIVING (Thursday)</b>		
		Nov-25	Victoria Stamp & Coin Fair	Victoria	bourse*
	Dec-01	Dec-02	Vancouver Stamp Fair	Vancouver	bourse*
		Dec-09	Fenwick	Renton	bourse*
	Dec-14	Dec-16			
	Dec-22	Dec-23			
		<b>Dec-25</b>	<b>CHRISTMAS (Tuesday)</b>		