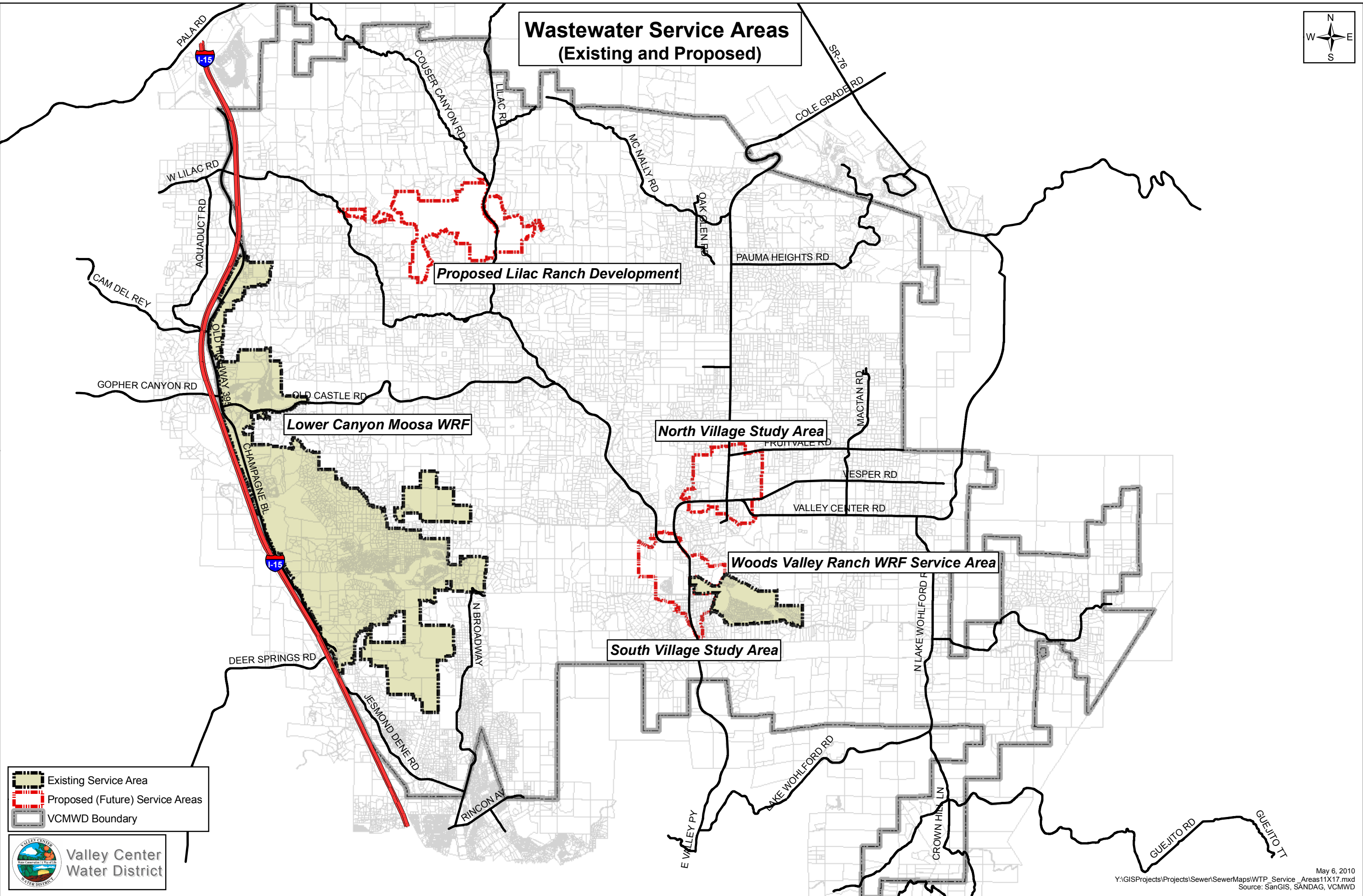
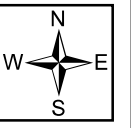


Wastewater Service Areas (Existing and Proposed)



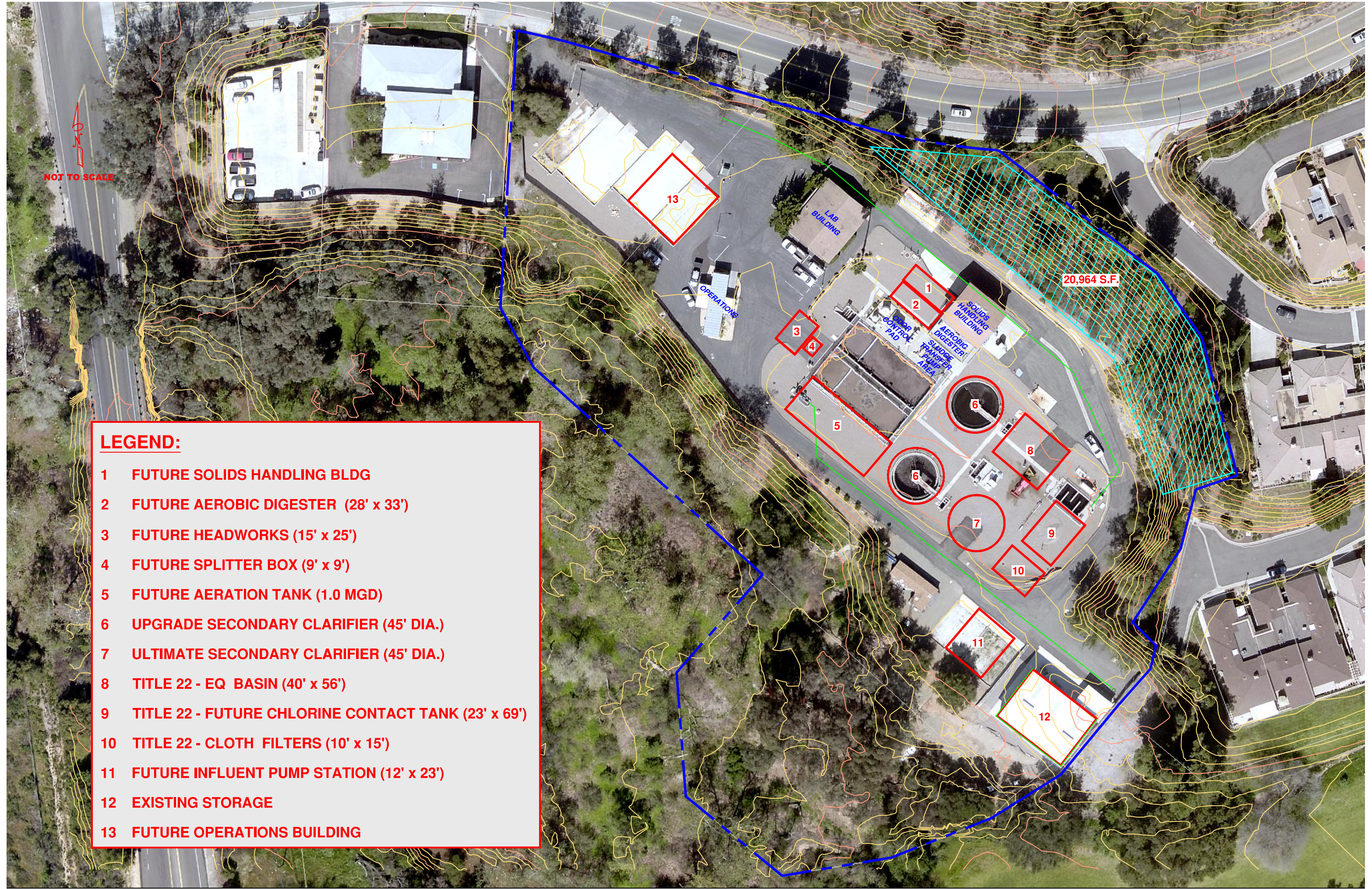
- Existing Service Area
- Proposed (Future) Service Areas
- VCMWD Boundary

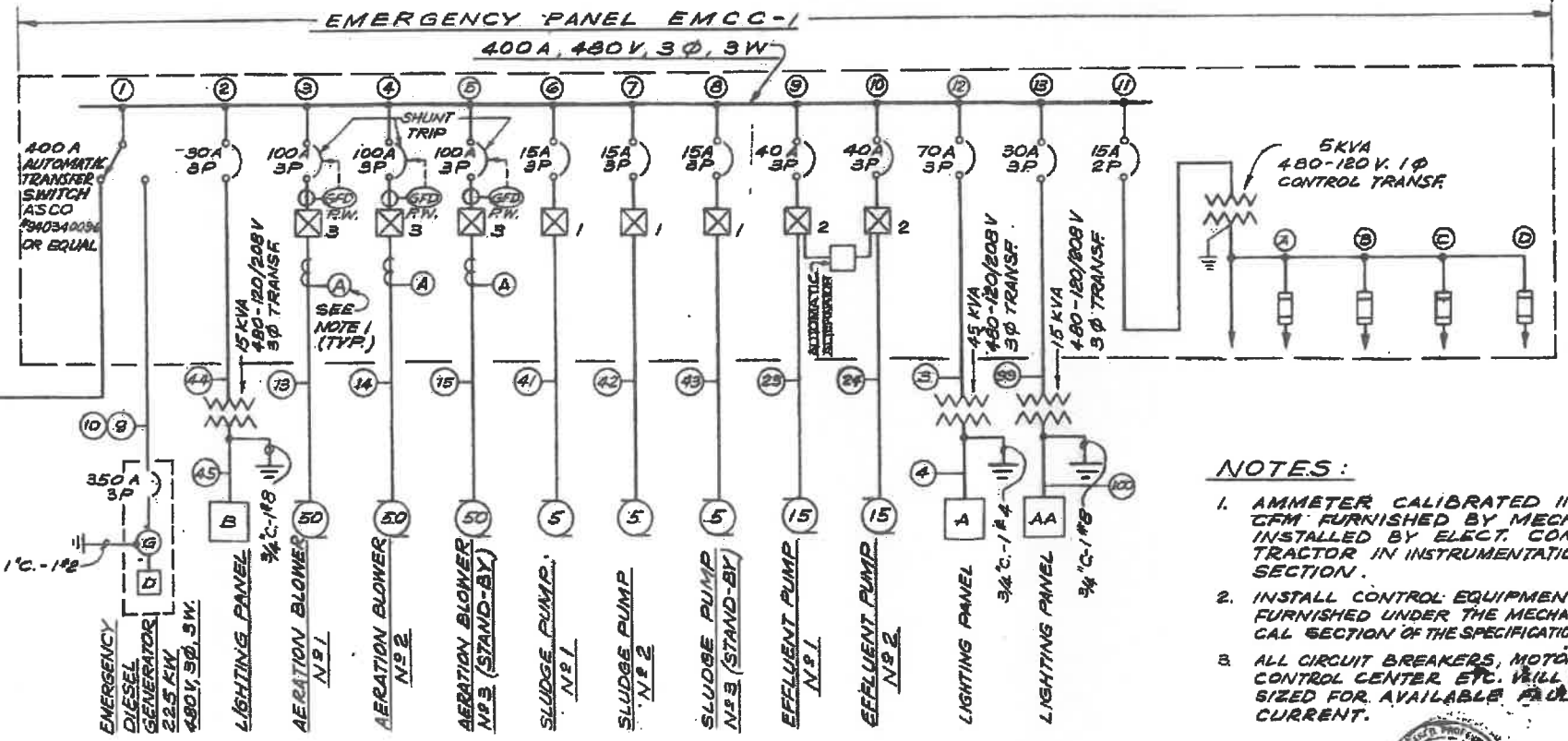
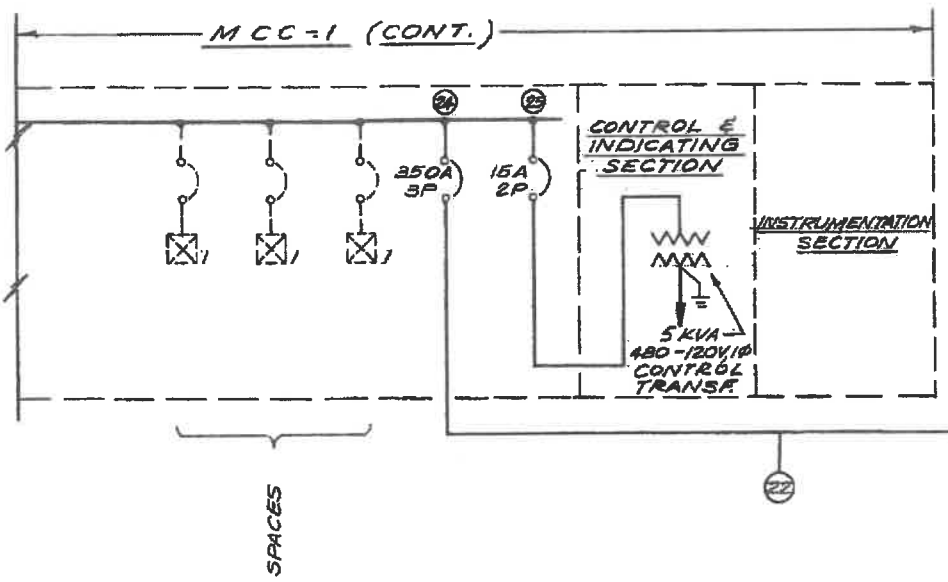
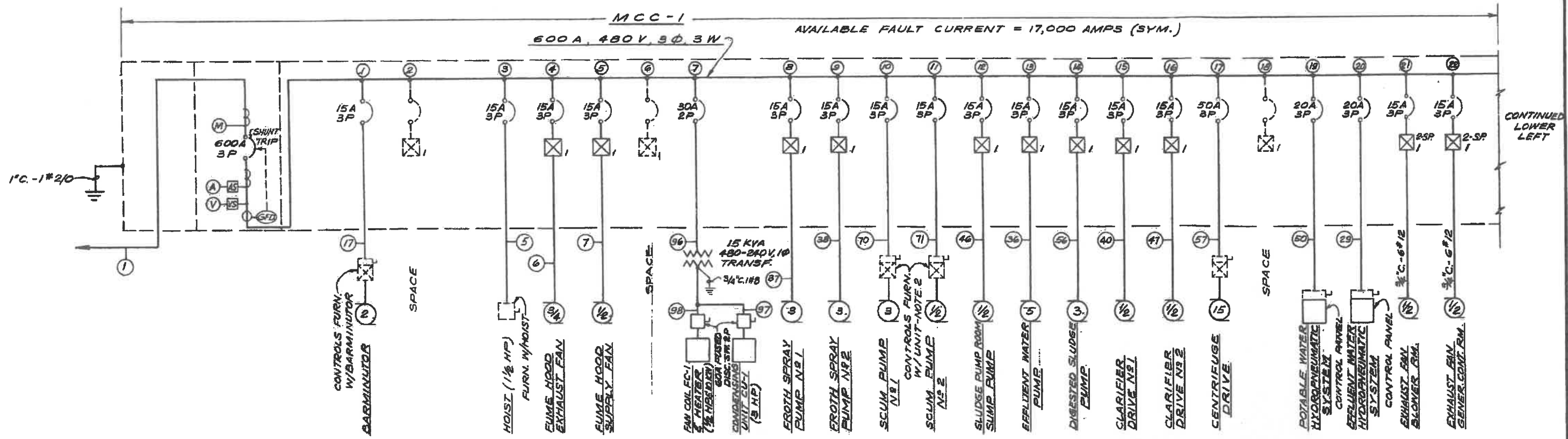


NOT TO SCALE


LEGEND:

- 1 FUTURE SOLIDS HANDLING BLDG
- 2 FUTURE AEROBIC DIGESTER (28' x 33')
- 3 FUTURE HEADWORKS (15' x 25')
- 4 FUTURE SPLITTER BOX (9' x 9')
- 5 FUTURE AERATION TANK (1.0 MGD)
- 6 UPGRADE SECONDARY CLARIFIER (45' DIA.)
- 7 ULTIMATE SECONDARY CLARIFIER (45' DIA.)
- 8 TITLE 22 - EQ BASIN (40' x 56')
- 9 TITLE 22 - FUTURE CHLORINE CONTACT TANK (23' x 69')
- 10 TITLE 22 - CLOTH FILTERS (10' x 15')
- 11 FUTURE INFLUENT PUMP STATION (12' x 23')
- 12 EXISTING STORAGE
- 13 FUTURE OPERATIONS BUILDING





- NOTES:**
1. AMMETER CALIBRATED IN CFM FURNISHED BY MECH. INSTALLED BY ELECT. CONTRACTOR IN INSTRUMENTATION SECTION.
 2. INSTALL CONTROL EQUIPMENT FURNISHED UNDER THE MECHANICAL SECTION OF THE SPECIFICATIONS.
 3. ALL CIRCUIT BREAKERS, MOTOR CONTROL CENTER ETC. WILL BE SIZED FOR AVAILABLE FAULT CURRENT.

(AS BUILT) 

ALT. B ONLY