



ACCOUNT NUMBER 1706 932 195 8
 SERVICE FOR
 VLY CENTER MUN WTR DIST
 29801 ANTHONY RD
 VALLEY CENTER, CA 92082

DATE MAILED Jun 29, 2018 Page 1 of 4
www.sdge.com
1-800-336-SDGE (7343) English
1-800-311-SDGE (7343) Español
1-877-889-SDGE (7343) TTY
 M-F, 7am-8pm, Sat, 7am-6pm
 24 Hour Emergency Service

Account Summary

Previous Balance		\$7,570.54
Payment Received	06/13/18	+ 63.43
Past Due Balance		\$7,633.97
Current Charges		+ 9,379.70
Total Amount Due		\$17,013.67

Please disregard past due balance if already paid. Please pay current charges by Jul 14, 2018.

.7% Delayed Payment Charge Due If Paid After Jul 27, 2018.

Summary of Current Charges

(See page 2 for details)

	Billing Period	Usage	Amount(\$)
Electric	May 17, 2018 - Jun 18, 2018	34,231 kWh	9,379.70
Total Charges this Month			\$9,379.70

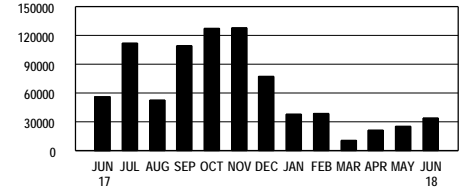
Seasonal Rate Change This Billing Period:
 Seasonal rates changed from Winter to Summer.

Regulatory Notices

All customers are required to pay a Competition Transition Charge as part of the charges above, including those who choose an electric service provider other than SDG&E.

DATE DUE	ON RECEIPT
AMOUNT DUE	\$17,013.67

Electric Usage History (Total kWh used)



	Jun 17	May 18	Jun 18
Total kWh used	56,512	25,564	34,231
Daily average kWh	1,766.0	881.5	1,069.7
Days in billing cycle	32	29	32
Change in daily average from last month			+ 21.3%
Change in daily average from last year			- 39.4%
Max monthly demand	703.2	237.6	234.0

See Time of Use - Electricity information on page 3.

PLEASE KEEP THIS PORTION FOR YOUR RECORDS. (FAVOR DE GUARDAR ESTA PARTE PARA SUS REGISTROS.)
 PLEASE RETURN THIS PORTION WITH YOUR PAYMENT. (FAVOR DE DEVOLVER ESTA PARTE CON SU PAGO.)



Save Paper & Postage
 PAY ONLINE
 www.sdge.com

ACCOUNT NUMBER
 1706 932 195 8

DATE DUE	ON RECEIPT
AMOUNT DUE	\$17,013.67

SERVICE ADDRESS: 29801 ANTHONY RD VC 92082

Please enter amount enclosed.

\$

Write account number on check and make payable to **San Diego Gas & Electric**.

VLY CENTER MUN WTR DIST
 MILLER PUMP STATION
 PO BOX 67
 VALLEY CENTER CA 92082-0067

SAN DIEGO GAS & ELECTRIC
 PO BOX 25111
 SANTA ANA CA 92799-5111



ACCOUNT NUMBER 1706 932 195 8
 SERVICE FOR
 VLY CENTER MUN WTR DIST
 29801 ANTHONY RD
 VALLEY CENTER, CA 92082

DATE MAILED Jul 31, 2018
 sdge.com

Account Summary

Previous Balance	\$17,013.67
Payment Received	- .00
Past Due Balance	\$17,013.67
Current Charges	+ 14,849.92
Total Amount Due	\$31,863.59

Please disregard past due balance if already paid. Please pay current charges by Aug 15, 2018.

.7% Delayed Payment Charge Due If Paid After Aug 26, 2018.

Summary of Current Charges

(See page 2 for details)

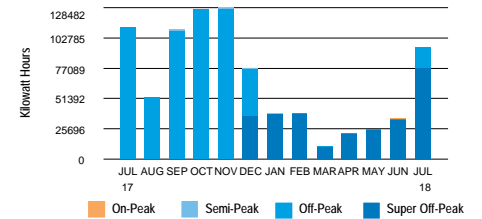
	Billing Period	Usage	Amount(\$)
Electric	Jun 18, 2018 - Jul 18, 2018	94,928 kWh	14,849.92
Total Charges this Month			\$14,849.92

Regulatory Notices

- All customers are required to pay a Competition Transition Charge as part of the charges above, including those who choose an electric service provider other than SDG&E.

DATE DUE	ON RECEIPT
AMOUNT DUE	\$31,863.59

Electric Usage History (Total kWh used)



94,928 kWh used

- 3,164.3 Daily avg kWh
- 1,069.7 Daily avg kWh last month
- 15.3% Change in daily avg kWh from last year
- 195.8% Change in daily avg kWh from last month
- 483.6 Max monthly demand
- 30 Days in billing cycle

PLEASE KEEP THIS PORTION FOR YOUR RECORDS. (FAVOR DE GUARDAR ESTA PARTE PARA SUS REGISTROS.)
 PLEASE RETURN THIS PORTION WITH YOUR PAYMENT. (FAVOR DE DEVOLVER ESTA PARTE CON SU PAGO.)



Save Paper & Postage
 PAY ONLINE
 sdge.com

ACCOUNT NUMBER
1706 932 195 8

DATE DUE	ON RECEIPT
AMOUNT DUE	\$31,863.59

SERVICE ADDRESS: 29801 ANTHONY RD VC 92082

Please enter amount enclosed.

\$

Write account number on check and make payable to **San Diego Gas & Electric**.

VLY CENTER MUN WTR DIST
 MILLER PUMP STATION
 PO BOX 67
 VALLEY CENTER CA 92082-0067

SAN DIEGO GAS & ELECTRIC
 PO BOX 25111
 SANTA ANA CA 92799-5111



Detail of Current Charges

Electric Service

Rate: Time of Use - PAT-1-Commercial Climate Zone: Inland
 Billing Period: 6/18/18 - 7/18/18 Total Days: 30
 Meter Number: 06700423 (Next scheduled read date Aug 17, 2018) Cycle: 13
 Meter Constant: 300.000 Billing Voltage Level: Secondary
 Circuit: 1022 Block: 153A
 Total Usage: 94,928 (Usage based on interval data)

ELECTRIC CHARGES

Customer Charge Amount(\$)
87.02

Electricity Delivery (Details below)	27,015 kWh			
<i>SUMMER USAGE</i>	On-Peak	Off-Peak	Super Off-Peak	
kWh used	131	4,578	22,306	
Rate/kWh	\$.00183	\$.00183	\$.00183	
12 Day Charge	\$.24	+ \$8.38	+ \$40.82	= 49.44

Electricity Delivery (Details below)	67,913 kWh			
<i>SUMMER USAGE</i>	On-Peak	Off-Peak	Super Off-Peak	
kWh used	201	13,666	54,046	
Rate/kWh	\$.00174	\$.00174	\$.00174	
18 Day Charge	\$.35	+ \$23.78	+ \$94.04	= 118.17

Rate Change This Billing Period:
 There was a rate change on day 13 of your Billing Period. Therefore, your charges for the first 12 days were at Rate 1, and the remaining 18 days were at Rate 2.

Summer On-Peak Demand	3.6 kW x \$.00	.00
Summer Time Of Use Demand	241.2 kW x \$13.45 x 12/30	1,297.66
Summer Time Of Use Demand	241.2 kW x \$13.40 x 18/30	1,939.25
Summer Non-Coincident Demand	483.6 kW x \$6.90	3,336.84
DWR Bond Charge	94,928 kWh x \$.00549	521.15

(Continued on next page)

Important Phone Numbers



1-800-336-SDGE (7343) English
1-800-311-SDGE (7343) Español
1-877-889-SDGE (7343) TTY

M-F, 7am-8pm, Sat, 7am-6pm

For emergencies and to report outages, please call 24 hours a day, 7 days a week. **1-800-611-7343**

To locate underground cables & gas pipes, please call DigAlert, Monday-Friday, 6am-7pm. **8-1-1**

To make a payment using your credit or debit card via a third party vendor, call **1-800-386-0067**

Payment Options \$ Please visit sdge.com/residential/pay-your-bill for more ways to pay your bill.



Online Bill Pay:
 Register to make a secure payment now or schedule your payment at myaccount.sdge.com, or visit your bank's website for home banking options.



Credit/Debit:
 Pay by credit/debit card via third party vendor (fee applies) by visiting sdge.com/residential/pay-your-bill. Click on the Bill Matrix link or call 1-800-386-0067 to make a payment.



Mobile:
 SDG&E's free app for your mobile device gives you more ways to connect with us. Visit sdge.com/mobileapps to download.



In Person:
 To find the nearest location and hours of operation, visit sdge.com/locations.



Need help paying your bill?
 For payment options or to make payment arrangements, visit us at sdge.com/assistance or call 1-800-411-7343



By Mail:
 Mail your check or money order, along with the payment stub at the bottom of your bill, in the enclosed envelope to SDG&E, PO Box 25111, Santa Ana, CA 92799-5111.

**Detail of Current Charges - Continued****Electricity Generation (Details below) 27,015 kWh**

SUMMER USAGE	On-Peak	Off-Peak	Super Off-Peak		
kWh used	131	4,578	22,306		
Rate/kWh	\$.11171	\$.09302	\$.07428		
12 Day Charge	\$14.63	+ \$425.85	+ \$1,656.89	=	2,097.37

Electricity Generation (Details below) 67,913 kWh

SUMMER USAGE	On-Peak	Off-Peak	Super Off-Peak		
kWh used	201	13,666	54,046		
Rate/kWh	\$.11158	\$.09291	\$.07428		
18 Day Charge	\$22.43	+ \$1,269.71	+ \$4,014.54	=	5,306.68

Rate Change This Billing Period:

There was a rate change on day 13 of your Billing Period. Therefore, your charges for the first 12 days were at Rate 1, and the remaining 18 days were at Rate 2.

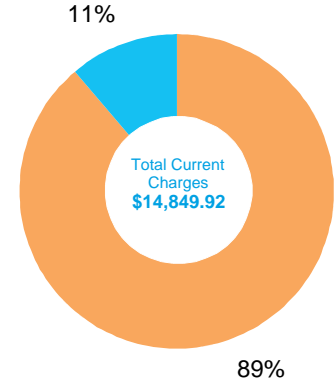
Summer Generation Demand	3.6 kW x \$5.40 x 12/30	7.78
Summer Generation Demand	3.6 kW x \$5.39 x 18/30	11.64

Total Electric Charges \$14,773.00**TAXES & FEES ON ELECTRIC CHARGES**

	Amount (\$)
Franchise Fees on Electric Energy Supplied by Others	521.15 x 1.10% 5.73
State Surcharge Tax	94,928 kWh x \$.000290 27.52
State Regulatory Fee	94,928 kWh x \$.000460 43.67

Total Taxes & Fees on Electric Charges \$76.92**Total Electric Service \$14,849.92****Total Current Charges \$14,849.92****Breakdown of Current Charges**

The total current charges include the following components. Definitions for these terms are shown on page 5 of your bill.

**Period: 06/18 - 07/18****Electric Charges**

Electricity Generation	\$7,423.47
Transmission	\$1,738.26
Distribution	\$3,470.07
Nuclear Decommissioning	-\$4.75
Competition Transition Charge	\$98.74
Local Generation Charge	\$457.55
Reliability Services	\$1.89

Other Charges & Credits (Electric)

Public Purpose Programs	\$1,066.62
DWR Bond Charge	\$521.15
Other	\$76.92

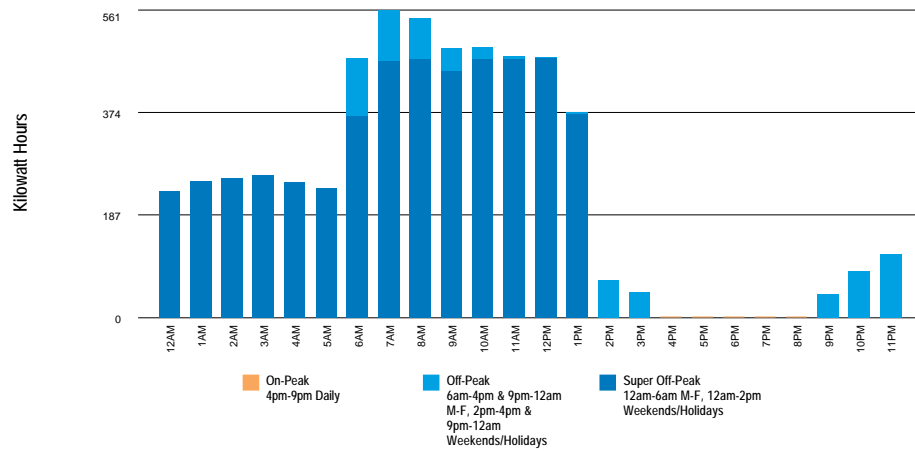
Total Current Charges \$14,849.92



Your Electricity Dashboard

Period: 06/18 - 07/18

Average Hourly Electric Usage



⚡ Average Hourly Usage (kWh)

Highest Usage Hour

Highest Usage Hour (Demand) this month:

⚡ **483.6 kW on July 15, 2018 from 12:00am to 1:00am**

Demand is the highest amount of electricity used at a given point in time.

Time of Use - Electricity

Summer	kWh	Jun 1 - Oct 31
On-Peak	332	4pm-9pm Daily
Off-Peak	18,244	6am-4pm & 9pm-12am M-F, 2pm-4pm & 9pm-12am Weekends/Holidays
Super Off	76,352	12am-6am M-F, 12am-2pm Weekends/Holidays
Total	94,928	



Definitions

California Climate Credit - Part of California's efforts to fight climate change, the credit results from fees charged by the state to reduce carbon pollution and increase use of cleaner forms of energy. These fees are returned to customers as savings on their electric bill. Households will receive the credit twice a year, and small businesses will receive it monthly. Learn how you can use these savings to further reduce your energy costs and help fight climate change at EnergyUpgradeCA.org/credit.

City of San Diego Franchise Fee Differential - A fee charged to SDG&E by the City of San Diego for the rights to operate within city streets.

Climate Zone - The CPUC established four Climatic Zones in California, based on annual average temperatures.

Competition Transition Charge (CTC) - Through this charge, SDG&E recovers costs for power plants and longterm power contracts approved by state regulators that have been made uneconomic by the shift to competition.

Delivery - Charges for the costs of owning, operating, and maintaining the transmission and distribution facilities to deliver power to customers.

Distribution - This line reflects charges to distribute power to customers. It includes power lines, poles, transformers, repair crews and emergency services.

DWR Charges - The Department of Water Resources (DWR) Bond Charge pays for bonds issued by DWR to cover the costs of purchasing power during the electricity crisis. All DWR charges, including the Cost Responsibility Surcharge component of DWR charges, are owned by DWR and not SDG&E. SDG&E collects charges for DWR as an agent of DWR.

Electricity Generation Charge - This charge is for the electricity you use and includes charges for the energy provided by both SDG&E and DWR. Electricity from DWR is owned by DWR, not SDG&E. If you purchase electricity from another supplier or buy electricity through SDG&E using hourly pricing, this charge appears only for informational purposes and will be offset by a credit.

Franchise Fees for Electric Energy Supplied by Others - This charge pays cities for the right to have transmission and distribution equipment (such as poles and wires) on city streets. This charge collects the franchise fee on the electricity purchased for you by DWR. The franchise fee on the electricity provided to you by SDG&E is included in the SDG&E Electricity Generation Charge.

kWh (kilowatt hour) - A common unit to measure electric energy consumption. A kWh equals 1,000 watts of electric power consumed for one hour of time.

Local Generation Charge - Recovers the costs associated with generation power suppliers that the CPUC has determined should be recovered from all benefiting customers.

Maximum Monthly Demand - The maximum demand during the current billing period.

Nuclear Decommissioning - This charge pays for the retirement of nuclear power plants.

Public Purpose Programs - This charge reflects the costs of certain state-mandated programs (such as low-income and energy efficiency programs).

Reliability Services (RS) - The Independent System Operator is required to ensure adequate generation to maintain electric system reliability. This means having enough generating facilities available to meet the demand for electricity at all times. The costs associated with this are passed on to SDG&E customers.

State Regulatory Fee - Charged to all utility users to pay for the California Public Utilities Commission (CPUC) operations.

State Surcharge Tax - Collected by the State of California for the conservation and development of energy resources in the state.

Total Rate Adjustment Component (TRAC) - This rate component reflects the handling of rate subsidies required by legislation and applied to residential usage up to 130% of baseline allowances. The associated rate cap subsidy amounts that apply to usage up to 130% of baseline allowances are tracked through add-on charges to residential rates for usage in excess of 130% of baseline allowances, as reflected in the TRAC component.

Transmission - This charge pays for the delivery of high-voltage electricity from power plants to distribution points near your home or business. It includes the cost of high-voltage power lines and towers, as well as monitoring and control equipment.

SDG&E Policies and Notices

Electronic Check Processing - When you pay your bill by check, you authorize us to electronically process your payment. If your check is processed electronically, your checking account may be debited on the same day we receive the check. Your check will not be returned by your bank, however, the transaction will appear on your bank statement. *If you do not wish to participate in this program, please have your account number ready and call 1-866-534-5152.*

Rates & Rules - SDG&E's rate schedules and rules, on file and approved by the CPUC, are available on the Internet at www.sdge.com. Copies of applicable tariffs may also be obtained by calling 1-800-411-SDGE (7343) or visiting any company bill payment office.

Pay Before Date / Disconnection Policy - Your SDG&E bill is due and payable upon presentation and is past due if not paid within 15 days of the date mailed. If your payment has not been received by the "Due Date" shown on your bill, your SDG&E service is subject to disconnection, after proper notice has been provided. If your service is disconnected for non-payment, there may be additional service charges and you will be required to pay all past due SDG&E amounts before service is restored. Your SDG&E service could also be disconnected if the information provided on your application for service is false, incomplete or inaccurate. SDG&E will disconnect your services only for non-payment of those charges owed SDG&E.

If you are unable to pay your SDG&E bill in full due to a temporary financial hardship or due to a serious illness in the household, you need to call SDG&E before the expiration of

this notice. Employees, including multilingual staff, are available to assist with payment arrangements.

If SDG&E fails to offer you payment arrangements, you may write to the Consumer Affairs Branch of the California Public Utilities Commission (CPUC), State Office Building, 505 Van Ness Avenue, Room 2003, San Francisco, CA 94102, phone: 800-649-7570, email: consumer-affairs@cpuc.ca.gov, prior to disconnection of your SDG&E service. The Consumer Affairs Branch will review the complaint and issue its proposed resolution to you and SDG&E. If you are not satisfied, you may appeal the proposed resolution by filing a formal complaint. A more detailed explanation of disconnection policies, including your rights as an SDG&E customer, may be obtained by calling 1-800-411-SDGE (7343), or e-mail: info@sdge.com.

Disputed Bills - If you dispute the SDG&E charges on your bill, which may include electric energy charges that reflect electricity provided by the State of California Department of Water Resources (DWR), please request an explanation from SDG&E within five days. If you still believe you have been billed incorrectly, the full amount of the SDG&E charges and DWR charges on the bill should be deposited with the California Public Utilities Commission, State Office Building, 505 Van Ness Avenue, Room 2003, San Francisco, CA 94102, phone: 800-649-7570, email: consumer-affairs@cpuc.ca.gov, within 15 days of the mailing date of a past due notice for residential customers or seven days for non-residential customers, to avoid disconnection of your SDG&E service. Make the remittance payable to the CPUC, not SDG&E.

You may, in lieu of depositing the full amount of disputed bills with the CPUC, agree to an installment plan with SDG&E. A complaint may still be filed with the CPUC by stating your claim in writing and by providing supporting documentation.

The CPUC will not accept deposits when the dispute appears to be over matters that do not directly relate to the accuracy of the bill. Such matters include the quality of the utility's service, general level of rates, pending rate applications, and sources of fuel that are used to generate power.

Failure to make the deposit to the CPUC or payment arrangements with SDG&E by the expiration date of a past due notice, may result in the disconnection of your SDG&E service.

Re-Establishment of Credit / Deposit - If your SDG&E bill becomes past due and a written notice for disconnection is mailed, you may be required to re-establish your credit by paying a deposit.

Large Font Bill - You can sign-up to receive a large font bill by calling SDG&E at 1-800-411-SDGE (7343).



ACCOUNT NUMBER 1706 932 195 8
 DATE DUE
 ON RECEIPT

DATE MAILED Jun 29, 2018 Page 2 of 4

1-800-336-SDGE (7343) English
 1-800-311-SDGE (7343) Español
 1-877-889-SDGE (7343) TTY

www.sdge.com

Detail of Current Charges

Electric Service

Rate: Time of Use - PAT-1-Commercial Climate Zone: Inland
 Billing Period: 5/17/18 - 6/18/18 Total Days: 32
 Meter Number: 06700423 (Next scheduled read date Jul 19, 2018) Cycle: 13
 Meter Constant: 300.000 Billing Voltage Level: Secondary
 Circuit: 1022 Block: 153A
 Total Usage: 34,231 (Usage based on interval data)

ELECTRIC CHARGES	Amount(\$)
-------------------------	-------------------

Customer Charge	79.11
-----------------	-------

Electricity Delivery (Details below)	7,040 kWh
--------------------------------------	-----------

WINTER USAGE	On-Peak	Off-Peak	Super Off-Peak	
kWh used	151	311	6,578	
Rate/kWh	\$.00183	\$.00183	\$.00183	
14 Day Charge	\$.28	+ \$.57	+ \$12.04	= 12.89

Electricity Delivery (Details below)	27,191 kWh
--------------------------------------	------------

SUMMER USAGE	On-Peak	Off-Peak	Super Off-Peak	
kWh used	195	404	26,592	
Rate/kWh	\$.00183	\$.00183	\$.00183	
18 Day Charge	\$.36	+ \$.74	+ \$48.66	= 49.76

Rate Change This Billing Period:
 There was a rate change on day 15 of your Billing Period. Therefore, your charges for the first 14 days were at Rate 1, and the remaining 18 days were at Rate 2.

(Continued on next page)

Other Important Phone Numbers (

For emergencies and to report outages, please call 24 hours a day, 7 days a week **1-800-611-7343**

To locate underground cables & gas pipes, please call DigAlert, Monday-Friday, 6am-7pm **8-1-1**

Payment Options \$

Online: It's fast, easy and free. Just register or sign into My Account at <https://myaccount.sdge.com>

Home banking: If you pay bills online through your bank, check with them to see if you can receive your bill online.

Automatic Pay: Have your payment automatically deducted from your account. For more information, call 1-800-411-SDGE (7343) or visit www.sdge.com

Pay by Phone: Visit www.sdge.com to enroll. Once enrolled for pay by phone option, you may authorize a payment from your checking account any day up to and including the bill due date.

By Mail: Mail your check or money order, along with the payment stub at the bottom of your bill, in the enclosed envelope to SDG&E, PO Box 25111, Santa Ana, CA 92799-5111

ATM/Debit/Credit Card or Electronic Check: You can use most major ATM/Debit cards, MasterCard and Visa credit cards, or the Electronic Check thru BillMatrix. A convenience fee is charged. Contact BillMatrix at 1-800-386-0067 or visit www.sdge.com/epay.

In Person: To find the nearest location and hours of operation, call 1-800-411-SDGE (7343) or visit www.sdge.com.

Need help paying your bill? Call us for programs and services at 1-800-411-SDGE (7343) or visit www.sdge.com.



ACCOUNT NUMBER 1706 932 195 8
 DATE DUE
 ON RECEIPT

DATE MAILED Jun 29, 2018 Page 3 of 4

1-800-336-SDGE (7343) English
 1-800-311-SDGE (7343) Español
 1-877-889-SDGE (7343) TTY

www.sdge.com

Detail of Current Charges - Continued

Winter On-Peak Demand	2.4 kW x \$.00 x 14/32	.00
Summer On-Peak Demand	3.6 kW x \$.00 x 18/32	.00
Winter Time Of Use Demand	232.8 kW x \$13.45 x 14/32	1,369.88
Summer Time Of Use Demand	232.8 kW x \$13.45 x 18/32	1,761.28
Winter Non-Coincident Demand	479.4 kW x \$6.90 x 14/32	1,447.19
Summer Non-Coincident Demand	479.4 kW x \$6.90 x 18/32	1,860.67
DWR Bond Charge	34,231 kWh x \$.00549	187.93

Electricity Generation (Details below) 7,040 kWh

WINTER USAGE	On-Peak	Off-Peak	Super Off-Peak	
kWh used	151	311	6,578	
Rate/kWh	\$.09877	\$.08765	\$.07533	
14 Day Charge	\$14.91	+ \$27.26	+ \$495.52	= 537.69

Electricity Generation (Details below) 27,191 kWh

SUMMER USAGE	On-Peak	Off-Peak	Super Off-Peak	
kWh used	195	404	26,592	
Rate/kWh	\$.11171	\$.09302	\$.07428	
18 Day Charge	\$21.78	+ \$37.58	+ \$1,975.25	= 2,034.61

Rate Change This Billing Period:

There was a rate change on day 15 of your Billing Period. Therefore, your charges for the first 14 days were at Rate 1, and the remaining 18 days were at Rate 2.

Winter Generation Demand	2.4 kW x \$.00 x 14/32	.00
Summer Generation Demand	3.6 kW x \$5.40 x 18/32	10.94

Total Electric Charges \$9,351.95

TAXES & FEES ON ELECTRIC CHARGES

	Amount (\$)
Franchise Fees on Electric Energy Supplied by Others	187.93 x 1.10% 2.07
State Surcharge Tax	34,231 kWh x \$.000290 9.93
State Regulatory Fee	34,231 kWh x \$.000460 15.75
Total Taxes & Fees on Electric Charges	\$27.75

Total Electric Service \$9,379.70

Total Current Charges \$9,379.70

Breakdown of Electric Charges

Period: 05/17 - 06/18

The total electric charges shown in the "Electric Service" section include the following components. Definitions for these terms are shown on page 4 of your bill.

Electricity Generation	2,583.24
DWR Bond Charge	187.93
Transmission	2,731.42
Distribution	3,305.09
Public Purpose Programs	344.70
Nuclear Decommissioning	-1.71
Competition Transition Charge	35.61
Local Generation Charge	164.99
Reliability Services	.68
Total Electric Costs	\$9,351.95

Time of Use - Electricity

Total	34,231
Winter	kWh May 1 - May 31
On-Peak	151 4pm-9pm Daily
Off-Peak	311 6am-4pm & 9pm-12am M-F, 2pm-4pm & 9pm-12am Weekends/Holidays
Super Off	6,578 12am-6am M-F, 12am-2pm Weekends/Holidays
Total	7,040
Summer	kWh Jun 1 - Oct 31
On-Peak	195 4pm-9pm Daily
Off-Peak	404 6am-4pm & 9pm-12am M-F, 2pm-4pm & 9pm-12am Weekends/Holidays
Super Off	26,592 12am-6am M-F, 12am-2pm Weekends/Holidays
Total	27,191



Definitions

California Climate Credit - Part of California's efforts to fight climate change, the credit results from fees charged by the state to reduce carbon pollution and increase use of cleaner forms of energy. These fees are returned to customers as savings on their electric bill. Households will receive the credit twice a year, and small businesses will receive it monthly. Learn how you can use these savings to further reduce your energy costs and help fight climate change at EnergyUpgradeCA.org/credit.

City of San Diego Franchise Fee Differential - A fee charged to SDG&E by the City of San Diego for the rights to operate within city streets.

Climate Zone - The CPUC established four Climatic Zones in California, based on annual average temperatures.

Competition Transition Charge (CTC) - Through this charge, SDG&E recovers costs for power plants and longterm power contracts approved by state regulators that have been made uneconomic by the shift to competition.

Delivery - Charges for the costs of owning, operating, and maintaining the transmission and distribution facilities to deliver power to customers.

Distribution - This line reflects charges to distribute power to customers. It includes power lines, poles, transformers, repair crews and emergency services.

DWR Charges - The Department of Water Resources (DWR) Bond Charge pays for bonds issued by DWR to cover the costs of purchasing power during the electricity crisis. All DWR charges, including the Cost Responsibility Surcharge component of DWR charges, are owned by DWR and not SDG&E. SDG&E collects charges for DWR as an agent of DWR.

Electricity Generation Charge - This charge is for the electricity you use and includes charges for the energy provided by both SDG&E and DWR. Electricity from DWR is owned by DWR, not SDG&E. If you purchase electricity from another supplier or buy electricity through SDG&E using hourly pricing, this charge appears only for informational purposes and will be offset by a credit.

Franchise Fees for Electric Energy Supplied by Others - This charge pays cities for the right to have transmission and distribution equipment (such as poles and wires) on city streets. This charge collects the franchise fee on the electricity purchased for you by DWR. The franchise fee on the electricity provided to you by SDG&E is included in the SDG&E Electricity Generation Charge.

kWh (kilowatt hour) - A common unit to measure electric energy consumption. A kWh equals 1,000 watts of electric power consumed for one hour of time.

Local Generation Charge - Recovers the costs associated with generation power suppliers that the CPUC has determined should be recovered from all benefiting customers.

Maximum Monthly Demand - The maximum demand during the current billing period.

Nuclear Decommissioning - This charge pays for the retirement of nuclear power plants.

Public Purpose Programs - This charge reflects the costs of certain state-mandated programs (such as low-income and energy efficiency programs).

Reliability Services (RS) - The Independent System Operator is required to ensure adequate generation to maintain electric system reliability. This means having enough generating facilities available to meet the demand for electricity at all times. The costs associated with this are passed on to SDG&E customers.

State Regulatory Fee - Charged to all utility users to pay for the California Public Utilities Commission (CPUC) operations.

State Surcharge Tax - Collected by the State of California for the conservation and development of energy resources in the state.

Total Rate Adjustment Component (TRAC) - This rate component reflects the handling of rate subsidies required by legislation and applied to residential usage up to 130% of baseline allowances. The associated rate cap subsidy amounts that apply to usage up to 130% of baseline allowances are tracked through add-on charges to residential rates for usage in excess of 130% of baseline allowances, as reflected in the TRAC component.

Transmission - This charge pays for the delivery of high-voltage electricity from power plants to distribution points near your home or business. It includes the cost of high-voltage power lines and towers, as well as monitoring and control equipment.

SDG&E Policies and Notices

Electronic Check Processing - When you pay your bill by check, you authorize us to electronically process your payment. If your check is processed electronically, your checking account may be debited on the same day we receive the check. Your check will not be returned by your bank, however, the transaction will appear on your bank statement. *If you do not wish to participate in this program, please have your account number ready and call 1-866-534-5152.*

Rates & Rules - SDG&E's rate schedules and rules, on file and approved by the CPUC, are available on the Internet at www.sdge.com. Copies of applicable tariffs may also be obtained by calling 1-800-411-SDGE (7343) or visiting any company bill payment office.

Pay Before Date / Disconnection Policy - Your SDG&E bill is due and payable upon presentation and is past due if not paid within 15 days of the date mailed. If your payment has not been received by the "Due Date" shown on your bill, your SDG&E service is subject to disconnection, after proper notice has been provided. If your service is disconnected for non-payment, there may be additional service charges and you will be required to pay all past due SDG&E amounts before service is restored. Your SDG&E service could also be disconnected if the information provided on your application for service is false, incomplete or inaccurate. SDG&E will disconnect your services only for non-payment of those charges owed SDG&E.

If you are unable to pay your SDG&E bill in full due to a temporary financial hardship or due to a serious illness in the household, you need to call SDG&E before the expiration of

this notice. Employees, including multilingual staff, are available to assist with payment arrangements.

If SDG&E fails to offer you payment arrangements, you may write to the Consumer Affairs Branch of the California Public Utilities Commission (CPUC), State Office Building, 505 Van Ness Avenue, room 2003, San Francisco, CA 94102, phone: 800-649-7570, email: consumer-affairs@cpuc.ca.gov, prior to disconnection of your SDG&E service. The Consumer Affairs Branch will review the complaint and issue its proposed resolution to you and SDG&E. If you are not satisfied, you may appeal the proposed resolution by filing a formal complaint. A more detailed explanation of disconnection policies, including your rights as an SDG&E customer, may be obtained by calling 1-800-411-SDGE (7343), or e-mail: info@sdge.com.

Disputed Bills - If you dispute the SDG&E charges on your bill, which may include electric energy charges that reflect electricity provided by the State of California Department of Water Resources (DWR), please request an explanation from SDG&E within five days. If you still believe you have been billed incorrectly, the full amount of the SDG&E charges and DWR charges on the bill should be deposited with the California Public Utilities Commission, State Office Building, 505 Van Ness Avenue, Room 2003, San Francisco, CA 94102, phone: 800-649-7570, email: consumer-affairs@cpuc.ca.gov, within 15 days of the mailing date of a past due notice for residential customers or seven days for non-residential customers, to avoid disconnection of your SDG&E service. Make the remittance payable to the CPUC, not SDG&E.

You may, in lieu of depositing the full amount of disputed bills with the CPUC, agree to an installment plan with SDG&E. A complaint may still be filed with the CPUC by stating your claim in writing and by providing supporting documentation.

The CPUC will not accept deposits when the dispute appears to be over matters that do not directly relate to the accuracy of the bill. Such matters include the quality of the utility's service, general level of rates, pending rate applications, and sources of fuel that are used to generate power.

Failure to make the deposit to the CPUC or payment arrangements with SDG&E by the expiration date of a past due notice, may result in the disconnection of your SDG&E service.

Re-Establishment of Credit / Deposit - If your SDG&E bill becomes past due and a written notice for disconnection is mailed, you may be required to re-establish your credit by paying a deposit.



ACCOUNT NUMBER 1706 932 195 8
 SERVICE FOR
 VLY CENTER MUN WTR DIST
 29801 ANTHONY RD
 VALLEY CENTER, CA 92082

Sign up to go Paperless

Sign up to go Paperless today.
 Visit sdge.com/go-paperless-today.

You may have rate options. Please call us at 1-800-336-7343(SDGE) or visit our website at sdge.com.

Account Summary

Previous Balance			\$31,863.59
Payment Received	08/09/18	THANK YOU	- 17,013.67
Payment Received	08/22/18	THANK YOU	- 20,492.72
Credit Balance			- \$5,642.80
Current Charges			+ 16,253.51
Total Amount Due			\$10,610.71

.7% Delayed Payment Charge Due If Paid After Sep 24, 2018.

Summary of Current Charges

(See page 2 for details)

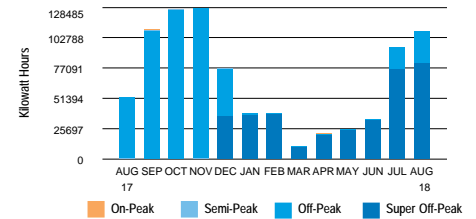
	Billing Period	Usage	Amount(\$)
Electric	Jul 18, 2018 - Aug 16, 2018	108,829 kWh	16,253.51
Total Charges this Month			\$16,253.51

Regulatory Notices

- All customers are required to pay a Competition Transition Charge as part of the charges above, including those who choose an electric service provider other than SDG&E.

DATE DUE	Sep 14, 2018
AMOUNT DUE	\$10,610.71

Electric Usage History (Total kWh used)



108,829 kWh used

- 3,752.7 Daily avg kWh
- 3,164.3 Daily avg kWh last month
- 106.6% Change in daily avg kWh from last year
- 18.6% Change in daily avg kWh from last month
- 483.6 Max monthly demand
- 29 Days in billing cycle

PLEASE KEEP THIS PORTION FOR YOUR RECORDS. (FAVOR DE GUARDAR ESTA PARTE PARA SUS REGISTROS.)
 PLEASE RETURN THIS PORTION WITH YOUR PAYMENT. (FAVOR DE DEVOLVER ESTA PARTE CON SU PAGO.)



SERVICE ADDRESS: 29801 ANTHONY RD VC 92082

Save Paper & Postage
 PAY ONLINE
sdge.com

ACCOUNT NUMBER
1706 932 195 8

DATE DUE	Sep 14, 2018
AMOUNT DUE	\$10,610.71

Please enter amount enclosed.

\$

Write account number on check and make payable to **San Diego Gas & Electric**.

VLY CENTER MUN WTR DIST
 MILLER PUMP STATION
 PO BOX 67
 VALLEY CENTER CA 92082-0067

SAN DIEGO GAS & ELECTRIC
 PO BOX 25111
 SANTA ANA CA 92799-5111



Detail of Current Charges

Electric Service

Rate: Time of Use - PAT-1-Commercial Climate Zone: Inland
 Billing Period: 7/18/18 - 8/16/18 Total Days: 29
 Meter Number: 06700423 (Next scheduled read date Sep 18, 2018) Cycle: 13
 Meter Constant: 300.000 Billing Voltage Level: Secondary
 Circuit: 1022 Block: 153A
 Total Usage: 108,829 (Usage based on interval data)

ELECTRIC CHARGES

Customer Charge	Amount(\$) 92.30
-----------------	---------------------

Electricity Delivery (Details below)	108,829 kWh		
<i>SUMMER USAGE</i>	<u>On-Peak</u>	<u>Off-Peak</u>	<u>Super Off-Peak</u>
kWh used	323	26,788	81,718
Rate/kWh	\$.00174	\$.00174	\$.00174
Charge	\$.56	+ \$46.61	+ \$142.19
			= 189.36

Summer On-Peak Demand	4.8 kW x \$.00	.00
Summer Time Of Use Demand	248.4 kW x \$13.40	3,328.56
Summer Non-Coincident Demand	483.6 kW x \$6.90	3,336.84

DWR Bond Charge 108,829 kWh x \$.00549 597.47

Electricity Generation (Details below)	108,829 kWh		
<i>SUMMER USAGE</i>	<u>On-Peak</u>	<u>Off-Peak</u>	<u>Super Off-Peak</u>
kWh used	323	26,788	81,718
Rate/kWh	\$.11158	\$.09291	\$.07428
Charge	\$36.04	+ \$2,488.87	+ \$6,070.01
			= 8,594.92

Summer Generation Demand 4.8 kW x \$5.39 25.87

Total Electric Charges \$16,165.32

(Continued on next page)

Important Phone Numbers

1-800-336-SDGE (7343) English
1-800-311-SDGE (7343) Español
1-877-889-SDGE (7343) TTY

M-F, 7am-8pm, Sat, 7am-6pm

For emergencies and to report outages, please call 24 hours a day, 7 days a week. **1-800-611-7343**

To locate underground cables & gas pipes, please call DigAlert, Monday-Friday, 6am-7pm. **8-1-1**

To make a payment using your credit or debit card via a third party vendor, call. **1-800-386-0067**

Payment Options \$ Please visit sdge.com/residential/pay-your-bill for more ways to pay your bill.



Online Bill Pay:

Register to make a secure payment now or schedule your payment at myaccount.sdge.com, or visit your bank's website for home banking options.



Credit/Debit:

Pay by credit/debit card via third party vendor (fee applies) by visiting sdge.com/residential/pay-your-bill. Click on the Bill Matrix link or call 1-800-386-0067 to make a payment.



Mobile:

SDG&E's free app for your mobile device gives you more ways to connect with us. Visit sdge.com/mobileapps to download.



In Person:

To find the nearest location and hours of operation, visit sdge.com/locations.



Need help paying your bill?

For payment options or to make payment arrangements, visit us at sdge.com/assistance or call 1-800-411-7343



By Mail:

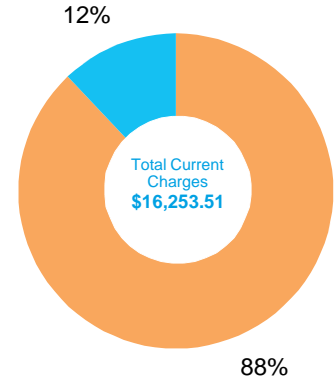
Mail your check or money order, along with the payment stub at the bottom of your bill, in the enclosed envelope to SDG&E, PO Box 25111, Santa Ana, CA 92799-5111.

Detail of Current Charges - Continued



TAXES & FEES ON ELECTRIC CHARGES

	Amount (\$)
Franchise Fees on Electric Energy Supplied by Others 597.47 x 1.10%	6.57
State Surcharge Tax 108,829 kWh x \$.000290	31.56
State Regulatory Fee 108,829 kWh x \$.000460	50.06
Total Taxes & Fees on Electric Charges	\$88.19
Total Electric Service	\$16,253.51
Total Current Charges	\$16,253.51

Breakdown of Current Charges



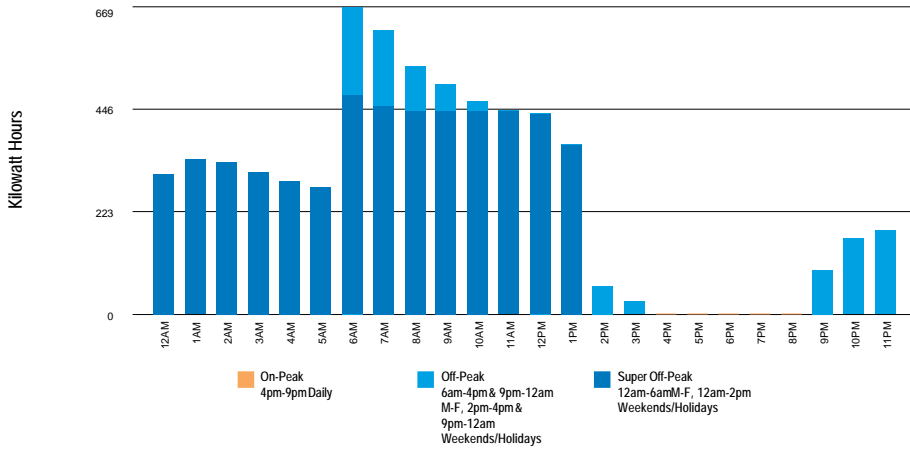
The total current charges include the following components. Definitions for these terms are shown on page 5 of your bill.

 Electric Charges	
Electricity Generation	\$8,620.79
Transmission	\$1,504.16
Distribution	\$3,535.13
Nuclear Decommissioning	-\$5.44
Competition Transition Charge	\$113.17
Local Generation Charge	\$524.56
Reliability Services	\$2.18
 Other Charges & Credits (Electric)	
Public Purpose Programs	\$1,273.30
DWR Bond Charge	\$597.47
Other	\$88.19
Total Current Charges	\$16,253.51

Your Electricity Dashboard

*Charts may not display if usage data is unavailable

Average Hourly Electric Usage



⚡ For each day in the billing cycle, an hourly usage is calculated by peak. At the end of the bill cycle, hourly usage is averaged and displayed on the chart by peak.

Highest Usage Hour

Highest Usage Hour (Demand) this month:

⚡ **483.6 kW on July 28, 2018 from 5:00am to 6:00am**

Demand is the highest amount of electricity used at a given point in time.

Time of Use - Electricity

Summer	kWh	Jun 1 - Oct 31
On-Peak	323	4pm-9pm Daily
Off-Peak	26,788	6am-4pm & 9pm-12am M-F, 2pm-4pm & 9pm-12am Weekends/Holidays
Super Off	81,718	12am-6am M-F, 12am-2pm Weekends/Holidays
Total	108,829	



Definitions

California Climate Credit - Part of California's efforts to fight climate change, the credit results from fees charged by the state to reduce carbon pollution and increase use of cleaner forms of energy. These fees are returned to customers as savings on their electric bill. Households will receive the credit twice a year, and small businesses will receive it monthly. Learn how you can use these savings to further reduce your energy costs and help fight climate change at EnergyUpgradeCA.org/credit.

City of San Diego Franchise Fee Differential - A fee charged to SDG&E by the City of San Diego for the rights to operate within city streets.

Climate Zone - The CPUC established four Climatic Zones in California, based on annual average temperatures.

Competition Transition Charge (CTC) - Through this charge, SDG&E recovers costs for power plants and long-term power contracts approved by state regulators that have been made uneconomical by the shift to competition.

Delivery - Charges for the costs of owning, operating, and maintaining the transmission and distribution facilities to deliver power to customers.

Distribution - This line reflects charges to distribute power to customers. It includes power lines, poles, transformers, repair crews and emergency services.

DWR Charges - The Department of Water Resources (DWR) Bond Charge pays for bonds issued by DWR to cover the costs of purchasing power during the electricity crisis. All DWR charges, including the Cost Responsibility Surcharge component of DWR charges, are owned by DWR and not SDG&E. SDG&E collects charges for DWR as an agent of DWR.

Electricity Generation Charge - This charge is for the electricity you use and includes charges for the energy provided by both SDG&E and DWR. Electricity from DWR is owned by DWR, not SDG&E. If you purchase electricity from another supplier or buy electricity through SDG&E using hourly pricing, this charge appears only for informational purposes and will be offset by a credit.

Franchise Fees for Electric Energy Supplied by Others - This charge pays cities for the right to have transmission and distribution equipment (such as poles and wires) on city streets. This charge collects the franchise fee on the electricity purchased for you by DWR. The franchise fee on the electricity provided to you by SDG&E is included in the SDG&E Electricity Generation Charge.

kWh (kilowatt hour) - A common unit to measure electric energy consumption. A kWh equals 1,000 watts of electric power consumed for one hour of time.

Local Generation Charge - Recovers the costs associated with generation power suppliers that the CPUC has determined should be recovered from all benefiting customers.

Maximum Monthly Demand - The maximum demand during the current billing period.

Nuclear Decommissioning - This charge pays for the retirement of nuclear power plants.

Public Purpose Programs - This charge reflects the costs of certain state-mandated programs (such as low-income and energy efficiency programs).

Reliability Services (RS) - The Independent System Operator is required to ensure adequate generation to maintain electric system reliability. This means having enough generating facilities available to meet the demand for electricity at all times. The costs associated with this are passed on to SDG&E customers.

State Regulatory Fee - Charged to all utility users to pay for the California Public Utilities Commission (CPUC) operations.

State Surcharge Tax - Collected by the State of California for the conservation and development of energy resources in the state.

Total Rate Adjustment Component (TRAC) - This legislated charge is a conservation incentive. Customers with usage of less than 130% of baseline receive a subsidy credit. Customers with usage over 130% of baseline make up the difference and cover the cost of the subsidy.

Transmission - This charge pays for the delivery of high-voltage electricity from power plants to distribution points near your home or business. It includes the cost of high-voltage power lines and towers, as well as monitoring and control equipment.

SDG&E Policies and Notices

Electronic Check Processing - When you pay your bill by check, you authorize us to electronically process your payment. If your check is processed electronically, your checking account may be debited on the same day we receive the check. Your check will not be returned by your bank, however, the transaction will appear on your bank statement. *If you do not wish to participate in this program, please have your account number ready and call 1-866-534-5152.*

Rates & Rules - SDG&E's rate schedules and rules, on file and approved by the CPUC, are available on the Internet at www.sdge.com. Copies of applicable tariffs may also be obtained by calling 1-800-411-SDGE (7343) or visiting any company bill payment office.

Pay Before Date / Disconnection Policy - Your SDG&E bill is due and payable upon presentation and is past due if not paid within 15 days of the date mailed. If your payment has not been received by the "Due Date" shown on your bill, your SDG&E service is subject to disconnection, after proper notice has been provided. If your service is disconnected for non-payment, there may be additional service charges and you will be required to pay all past due SDG&E amounts before service is restored. Your SDG&E service could also be disconnected if the information provided on your application for service is false, incomplete or inaccurate. SDG&E will disconnect your services only for non-payment of those charges owed SDG&E.

If you are unable to pay your SDG&E bill in full due to a temporary financial hardship or due to a serious illness in the household, you need to call SDG&E before the expiration of

this notice. Employees, including multilingual staff, are available to assist with payment arrangements.

If SDG&E fails to offer you payment arrangements, you may write to the Consumer Affairs Branch of the California Public Utilities Commission (CPUC), State Office Building, 505 Van Ness Avenue, Room 2003, San Francisco, CA 94102, phone: 800-649-7570, email: consumer-affairs@cpuc.ca.gov, prior to disconnection of your SDG&E service. The Consumer Affairs Branch will review the complaint and issue its proposed resolution to you and SDG&E. If you are not satisfied, you may appeal the proposed resolution by filing a formal complaint. A more detailed explanation of disconnection policies, including your rights as an SDG&E customer, may be obtained by calling 1-800-411-SDGE (7343), or e-mail: info@sdge.com.

Disputed Bills - If you dispute the SDG&E charges on your bill, which may include electric energy charges that reflect electricity provided by the State of California Department of Water Resources (DWR), please request an explanation from SDG&E within five days. If you still believe you have been billed incorrectly, the full amount of the SDG&E charges and DWR charges on the bill should be deposited with the California Public Utilities Commission, State Office Building, 505 Van Ness Avenue, Room 2003, San Francisco, CA 94102, phone: 800-649-7570, email: consumer-affairs@cpuc.ca.gov, within 15 days of the mailing date of a past due notice for residential customers or seven days for non-residential customers, to avoid disconnection of your SDG&E service. Make the remittance payable to the CPUC, not SDG&E.

You may, in lieu of depositing the full amount of disputed bills with the CPUC, agree to an installment plan with SDG&E. A complaint may still be filed with the CPUC by stating your claim in writing and by providing supporting documentation.

The CPUC will not accept deposits when the dispute appears to be over matters that do not directly relate to the accuracy of the bill. Such matters include the quality of the utility's service, general level of rates, pending rate applications, and sources of fuel that are used to generate power.

Failure to make the deposit to the CPUC or payment arrangements with SDG&E by the expiration date of a past due notice, may result in the disconnection of your SDG&E service.

Re-Establishment of Credit / Deposit - If your SDG&E bill becomes past due and a written notice for disconnection is mailed, you may be required to re-establish your credit by paying a deposit.

Large Font Bill - You can sign-up to receive a large font bill by calling SDG&E at 1-800-411-SDGE (7343).



ACCOUNT NUMBER 1706 932 195 8
 SERVICE FOR
 VLY CENTER MUN WTR DIST
 29801 ANTHONY RD
 VALLEY CENTER, CA 92082

Sign up to go Paperless

Sign up to go Paperless today.
 Visit sdge.com/go-paperless-today.

Account Summary

Previous Balance			\$10,610.71
Payment Received	09/18/18	THANK YOU	- 10,610.71
Current Charges			+ 15,521.93
Total Amount Due			\$15,521.93

.7% Delayed Payment Charge Due If Paid After Oct 26, 2018.

Summary of Current Charges

(See page 2 for details)

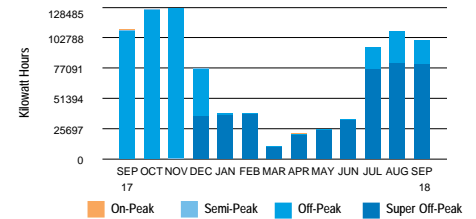
	Billing Period	Usage	Amount(\$)
Electric	Aug 16, 2018 - Sep 17, 2018	100,880 kWh	15,521.93
Total Charges this Month			\$15,521.93

Regulatory Notices

- All customers are required to pay a Competition Transition Charge as part of the charges above, including those who choose an electric service provider other than SDG&E.

DATE DUE	Oct 16, 2018
AMOUNT DUE	\$15,521.93

Electric Usage History (Total kWh used)



100,880 kWh used

- 3,152.5 Daily avg kWh
- 3,752.7 Daily avg kWh last month
- 8.0% Change in daily avg kWh from last year
- 16.0% Change in daily avg kWh from last month
- 483.6 Max monthly demand
- 32 Days in billing cycle

PLEASE KEEP THIS PORTION FOR YOUR RECORDS. (FAVOR DE GUARDAR ESTA PARTE PARA SUS REGISTROS.)
 PLEASE RETURN THIS PORTION WITH YOUR PAYMENT. (FAVOR DE DEVOLVER ESTA PARTE CON SU PAGO.)



SERVICE ADDRESS: 29801 ANTHONY RD VC 92082

Save Paper & Postage
 PAY ONLINE
 sdge.com

ACCOUNT NUMBER
1706 932 195 8

DATE DUE	Oct 16, 2018
AMOUNT DUE	\$15,521.93

Please enter amount enclosed.

\$

Write account number on check and make payable to **San Diego Gas & Electric**.

VLY CENTER MUN WTR DIST
 MILLER PUMP STATION
 PO BOX 67
 VALLEY CENTER CA 92082-0067

SAN DIEGO GAS & ELECTRIC
 PO BOX 25111
 SANTA ANA CA 92799-5111



Detail of Current Charges

Electric Service

Rate: Time of Use - PAT-1-Commercial Climate Zone: Inland
 Billing Period: 8/16/18 - 9/17/18 Total Days: 32
 Meter Number: 06700423 (Next scheduled read date Oct 18, 2018) Cycle: 13
 Meter Constant: 300.000 Billing Voltage Level: Secondary
 Circuit: 1022 Block: 153A
 Total Usage: 100,880 (Usage based on interval data)

ELECTRIC CHARGES

Customer Charge	Amount(\$) 92.30
-----------------	---------------------

Electricity Delivery (Details below)	100,880 kWh		
<i>SUMMER USAGE</i>	On-Peak	Off-Peak	Super Off-Peak
kWh used	352	20,342	80,186
Rate/kWh	\$.00174	\$.00174	\$.00174
Charge	\$.61	+ \$35.40	+ \$139.52
			= 175.53

Summer On-Peak Demand	3.6 kW x \$.00	.00
Summer Time Of Use Demand	252.0 kW x \$13.40	3,376.80
Summer Non-Coincident Demand	483.6 kW x \$6.90	3,336.84

DWR Bond Charge	100,880 kWh x \$.00549	553.83
-----------------	------------------------	--------

Electricity Generation (Details below)	100,880 kWh		
<i>SUMMER USAGE</i>	On-Peak	Off-Peak	Super Off-Peak
kWh used	352	20,342	80,186
Rate/kWh	\$.11158	\$.09291	\$.07428
Charge	\$39.28	+ \$1,889.98	+ \$5,956.22
			= 7,885.48

Summer Generation Demand	3.6 kW x \$5.39	19.40
--------------------------	-----------------	-------

Total Electric Charges \$15,440.18

(Continued on next page)

Important Phone Numbers

1-800-336-SDGE (7343) English
1-800-311-SDGE (7343) Español
1-877-889-SDGE (7343) TTY

M-F, 7am-8pm, Sat, 7am-6pm

For emergencies and to report outages, please call 24 hours a day, 7 days a week. **1-800-611-7343**

To locate underground cables & gas pipes, please call DigAlert, Monday-Friday, 6am-7pm. **8-1-1**

To make a payment using your credit or debit card via a third party vendor, call. **1-800-386-0067**

Payment Options \$ Please visit sdge.com/residential/pay-your-bill for more ways to pay your bill.



Online Bill Pay:

Register to make a secure payment now or schedule your payment at myaccount.sdge.com, or visit your bank's website for home banking options.



Credit/Debit:

Pay by credit/debit card via third party vendor (fee applies) by visiting sdge.com/residential/pay-your-bill. Click on the Bill Matrix link or call 1-800-386-0067 to make a payment.



Mobile:

SDG&E's free app for your mobile device gives you more ways to connect with us. Visit sdge.com/mobileapps to download.



In Person:

To find the nearest location and hours of operation, visit sdge.com/locations.



Need help paying your bill?

For payment options or to make payment arrangements, visit us at sdge.com/assistance or call 1-800-411-7343



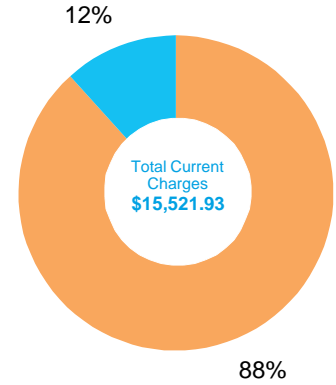
By Mail:

Mail your check or money order, along with the payment stub at the bottom of your bill, in the enclosed envelope to SDG&E, PO Box 25111, Santa Ana, CA 92799-5111.

Detail of Current Charges - Continued

TAXES & FEES ON ELECTRIC CHARGES		Amount (\$)
Franchise Fees on Electric Energy Supplied by Others	553.83 x 1.10%	6.09
State Surcharge Tax	100,880 kWh x \$.000290	29.26
State Regulatory Fee	100,880 kWh x \$.000460	46.40
Total Taxes & Fees on Electric Charges		\$81.75
Total Electric Service		\$15,521.93
Total Current Charges		\$15,521.93

Breakdown of Current Charges



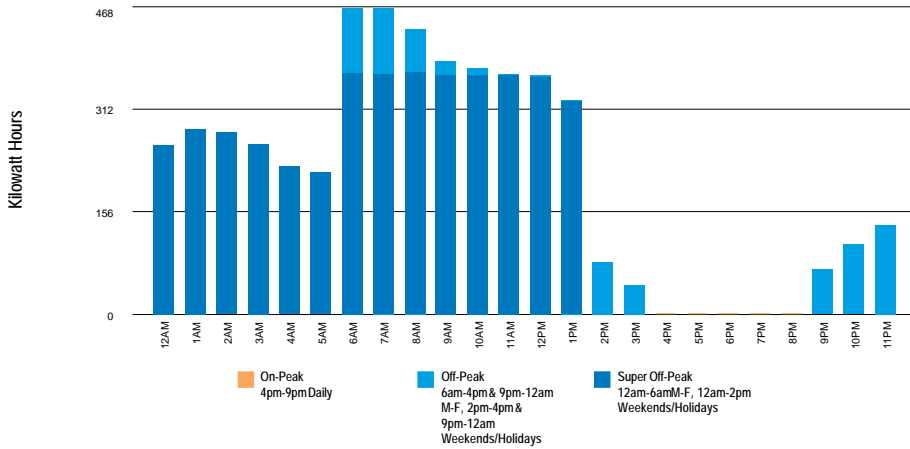
The total current charges include the following components. Definitions for these terms are shown on page 5 of your bill.

Electric Charges	
Electricity Generation	\$7,904.88
Transmission	\$1,638.02
Distribution	\$3,575.03
Nuclear Decommissioning	-\$5.04
Competition Transition Charge	\$104.90
Local Generation Charge	\$486.24
Reliability Services	\$2.02
Other Charges & Credits (Electric)	
Public Purpose Programs	\$1,180.30
DWR Bond Charge	\$553.83
Other	\$81.75
Total Current Charges	\$15,521.93

Your Electricity Dashboard

*Charts may not display if usage data is unavailable

Average Hourly Electric Usage



⚡ For each day in the billing cycle, an hourly usage is calculated by peak. At the end of the bill cycle, hourly usage is averaged and displayed on the chart by peak.

Highest Usage Hour

Highest Usage Hour (Demand) this month:

⚡ **483.6 kW on August 25, 2018 from 12:00am to 1:00am**

Demand is the highest amount of electricity used at a given point in time.

Time of Use - Electricity

Summer	kWh	Jun 1 - Oct 31
On-Peak	352	4pm-9pm Daily
Off-Peak	20,342	6am-4pm & 9pm-12am M-F, 2pm-4pm & 9pm-12am Weekends/Holidays
Super Off	80,186	12am-6am M-F, 12am-2pm Weekends/Holidays
Total	100,880	



Definitions

California Climate Credit - Part of California's efforts to fight climate change, the credit results from fees charged by the state to reduce carbon pollution and increase use of cleaner forms of energy. These fees are returned to customers as savings on their electric bill. Households will receive the credit twice a year, and small businesses will receive it monthly. Learn how you can use these savings to further reduce your energy costs and help fight climate change at EnergyUpgradeCA.org/credit.

City of San Diego Franchise Fee Differential - A fee charged to SDG&E by the City of San Diego for the rights to operate within city streets.

Climate Zone - The CPUC established four Climatic Zones in California, based on annual average temperatures.

Competition Transition Charge (CTC) - Through this charge, SDG&E recovers costs for power plants and long-term power contracts approved by state regulators that have been made uneconomical by the shift to competition.

Delivery - Charges for the costs of owning, operating, and maintaining the transmission and distribution facilities to deliver power to customers.

Distribution - This line reflects charges to distribute power to customers. It includes power lines, poles, transformers, repair crews and emergency services.

DWR Charges - The Department of Water Resources (DWR) Bond Charge pays for bonds issued by DWR to cover the costs of purchasing power during the electricity crisis. All DWR charges, including the Cost Responsibility Surcharge component of DWR charges, are owned by DWR and not SDG&E. SDG&E collects charges for DWR as an agent of DWR.

Electricity Generation Charge - This charge is for the electricity you use and includes charges for the energy provided by both SDG&E and DWR. Electricity from DWR is owned by DWR, not SDG&E. If you purchase electricity from another supplier or buy electricity through SDG&E using hourly pricing, this charge appears only for informational purposes and will be offset by a credit.

Franchise Fees for Electric Energy Supplied by Others - This charge pays cities for the right to have transmission and distribution equipment (such as poles and wires) on city streets. This charge collects the franchise fee on the electricity purchased for you by DWR. The franchise fee on the electricity provided to you by SDG&E is included in the SDG&E Electricity Generation Charge.

kWh (kilowatt hour) - A common unit to measure electric energy consumption. A kWh equals 1,000 watts of electric power consumed for one hour of time.

Local Generation Charge - Recovers the costs associated with generation power suppliers that the CPUC has determined should be recovered from all benefiting customers.

Maximum Monthly Demand - The maximum demand during the current billing period.

Nuclear Decommissioning - This charge pays for the retirement of nuclear power plants.

Public Purpose Programs - This charge reflects the costs of certain state-mandated programs (such as low-income and energy efficiency programs).

Reliability Services (RS) - The Independent System Operator is required to ensure adequate generation to maintain electric system reliability. This means having enough generating facilities available to meet the demand for electricity at all times. The costs associated with this are passed on to SDG&E customers.

State Regulatory Fee - Charged to all utility users to pay for the California Public Utilities Commission (CPUC) operations.

State Surcharge Tax - Collected by the State of California for the conservation and development of energy resources in the state.

Total Rate Adjustment Component (TRAC) - This legislated charge is a conservation incentive. Customers with usage of less than 130% of baseline receive a subsidy credit. Customers with usage over 130% of baseline make up the difference and cover the cost of the subsidy.

Transmission - This charge pays for the delivery of high-voltage electricity from power plants to distribution points near your home or business. It includes the cost of high-voltage power lines and towers, as well as monitoring and control equipment.

SDG&E Policies and Notices

Electronic Check Processing - When you pay your bill by check, you authorize us to electronically process your payment. If your check is processed electronically, your checking account may be debited on the same day we receive the check. Your check will not be returned by your bank, however, the transaction will appear on your bank statement. *If you do not wish to participate in this program, please have your account number ready and call 1-866-534-5152.*

Rates & Rules - SDG&E's rate schedules and rules, on file and approved by the CPUC, are available on the Internet at www.sdge.com. Copies of applicable tariffs may also be obtained by calling 1-800-411-SDGE (7343) or visiting any company bill payment office.

Pay Before Date / Disconnection Policy - Your SDG&E bill is due and payable upon presentation and is past due if not paid within 15 days of the date mailed. If your payment has not been received by the "Due Date" shown on your bill, your SDG&E service is subject to disconnection, after proper notice has been provided. If your service is disconnected for non-payment, there may be additional service charges and you will be required to pay all past due SDG&E amounts before service is restored. Your SDG&E service could also be disconnected if the information provided on your application for service is false, incomplete or inaccurate. SDG&E will disconnect your services only for non-payment of those charges owed SDG&E.

If you are unable to pay your SDG&E bill in full due to a temporary financial hardship or due to a serious illness in the household, you need to call SDG&E before the expiration of

this notice. Employees, including multilingual staff, are available to assist with payment arrangements.

If SDG&E fails to offer you payment arrangements, you may write to the Consumer Affairs Branch of the California Public Utilities Commission (CPUC), State Office Building, 505 Van Ness Avenue, Room 2003, San Francisco, CA 94102, phone: 800-649-7570, email: consumer-affairs@cpuc.ca.gov, prior to disconnection of your SDG&E service. The Consumer Affairs Branch will review the complaint and issue its proposed resolution to you and SDG&E. If you are not satisfied, you may appeal the proposed resolution by filing a formal complaint. A more detailed explanation of disconnection policies, including your rights as an SDG&E customer, may be obtained by calling 1-800-411-SDGE (7343), or e-mail: info@sdge.com.

Disputed Bills - If you dispute the SDG&E charges on your bill, which may include electric energy charges that reflect electricity provided by the State of California Department of Water Resources (DWR), please request an explanation from SDG&E within five days. If you still believe you have been billed incorrectly, the full amount of the SDG&E charges and DWR charges on the bill should be deposited with the California Public Utilities Commission, State Office Building, 505 Van Ness Avenue, Room 2003, San Francisco, CA 94102, phone: 800-649-7570, email: consumer-affairs@cpuc.ca.gov, within 15 days of the mailing date of a past due notice for residential customers or seven days for non-residential customers, to avoid disconnection of your SDG&E service. Make the remittance payable to the CPUC, not SDG&E.

You may, in lieu of depositing the full amount of disputed bills with the CPUC, agree to an installment plan with SDG&E. A complaint may still be filed with the CPUC by stating your claim in writing and by providing supporting documentation.

The CPUC will not accept deposits when the dispute appears to be over matters that do not directly relate to the accuracy of the bill. Such matters include the quality of the utility's service, general level of rates, pending rate applications, and sources of fuel that are used to generate power.

Failure to make the deposit to the CPUC or payment arrangements with SDG&E by the expiration date of a past due notice, may result in the disconnection of your SDG&E service.

Re-Establishment of Credit / Deposit - If your SDG&E bill becomes past due and a written notice for disconnection is mailed, you may be required to re-establish your credit by paying a deposit.

Large Font Bill - You can sign-up to receive a large font bill by calling SDG&E at 1-800-411-SDGE (7343).



ACCOUNT NUMBER 1706 932 195 8
 SERVICE FOR
 VLY CENTER MUN WTR DIST
 29801 ANTHONY RD
 VALLEY CENTER, CA 92082

Sign up to go Paperless

Sign up to go Paperless today.
 Visit sdge.com/go-paperless-today.

You may have rate options. Please call us at 1-800-336-7343(SDGE) or visit our website at sdge.com.

Account Summary

Previous Balance			\$12,151.63
Payment Received	11/14/18	THANK YOU	- 12,151.63
Current Charges			+ 10,239.38
Total Amount Due			\$10,239.38

.7% Delayed Payment Charge Due If Paid After Dec 25, 2018.

Summary of Current Charges

(See page 2 for details)

	Billing Period	Usage	Amount(\$)
Electric	Oct 17, 2018 - Nov 15, 2018	49,043 kWh	10,239.38
Total Charges this Month			\$10,239.38

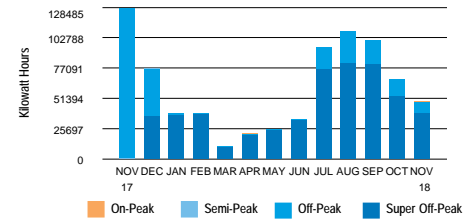
Seasonal Rate Change This Billing Period:
 Seasonal rates changed from Summer to Winter.

Regulatory Notices

- All customers are required to pay a Competition Transition Charge as part of the charges above, including those who choose an electric service provider other than SDG&E.

DATE DUE	Dec 15, 2018
AMOUNT DUE	\$10,239.38

Electric Usage History (Total kWh used)



49,043 kWh used

- 1,691.1 Daily avg kWh
- 2,251.6 Daily avg kWh last month
- 61.8% Change in daily avg kWh from last year
- 24.9% Change in daily avg kWh from last month
- 480.0 Max monthly demand
- 29 Days in billing cycle

PLEASE KEEP THIS PORTION FOR YOUR RECORDS. (FAVOR DE GUARDAR ESTA PARTE PARA SUS REGISTROS.)
 PLEASE RETURN THIS PORTION WITH YOUR PAYMENT. (FAVOR DE DEVOLVER ESTA PARTE CON SU PAGO.)



SERVICE ADDRESS: 29801 ANTHONY RD VC 92082

Save Paper & Postage
 PAY ONLINE sdge.com
 ACCOUNT NUMBER 1706 932 195 8

DATE DUE	Dec 15, 2018
AMOUNT DUE	\$10,239.38

Please enter amount enclosed.

\$
 Write account number on check and make payable to **San Diego Gas & Electric**.

VLY CENTER MUN WTR DIST
 MILLER PUMP STATION
 PO BOX 67
 VALLEY CENTER CA 92082-0067

SAN DIEGO GAS & ELECTRIC
 PO BOX 25111
 SANTA ANA CA 92799-5111



Detail of Current Charges

Electric Service

Rate: Time of Use - PAT-1-Commercial Climate Zone: Inland
 Billing Period: 10/17/18 - 11/15/18 Total Days: 29
 Meter Number: 06700423 (Next scheduled read date Dec 18, 2018) Cycle: 13
 Meter Constant: 300.000 Billing Voltage Level: Secondary
 Circuit: 1022 Block: 153A
 Total Usage: 49,043 (Usage based on interval data)

ELECTRIC CHARGES

Customer Charge	Amount(\$) 92.30
-----------------	---------------------

Electricity Delivery (Details below)	25,770 kWh		
<i>SUMMER USAGE</i>			
On-Peak	Off-Peak	Super Off-Peak	
kWh used	4,645	20,972	
Rate/kWh	\$.00174	\$.00174	\$.00174
14 Day Charge	\$.27	+ \$8.08	+ \$36.49 = 44.84

Electricity Delivery (Details below)	23,273 kWh		
<i>WINTER USAGE</i>			
On-Peak	Off-Peak	Super Off-Peak	
kWh used	748	4,892	17,633
Rate/kWh	\$.00174	\$.00174	\$.00174
15 Day Charge	\$1.30	+ \$8.51	+ \$30.68 = 40.49

Rate Change This Billing Period:
 There was a rate change on day 15 of your Billing Period. Therefore, your charges for the first 14 days were at Rate 1, and the remaining 15 days were at Rate 2.

Summer On-Peak Demand	3.6 kW x \$.00 x 14/29	.00
Winter On-Peak Demand	231.6 kW x \$.00 x 15/29	.00
Summer Time Of Use Demand	234.0 kW x \$13.40 x 14/29	1,513.74
Winter Time Of Use Demand	234.0 kW x \$13.40 x 15/29	1,621.86
Summer Non-Coincident Demand	480.0 kW x \$6.90 x 14/29	1,598.90
Winter Non-Coincident Demand	480.0 kW x \$6.90 x 15/29	1,713.10
DWR Bond Charge	49,043 kWh x \$.00549	269.25

(Continued on next page)

Important Phone Numbers

1-800-336-SDGE (7343) English
1-800-311-SDGE (7343) Español
1-877-889-SDGE (7343) TTY

M-F, 7am-8pm, Sat, 7am-6pm

For emergencies and to report outages, please call 24 hours a day, 7 days a week. **1-800-611-7343**

To locate underground cables & gas pipes, please call DigAlert, Monday-Friday, 6am-7pm. **8-1-1**

To make a payment using your credit or debit card via a third party vendor, call. **1-800-386-0067**

Payment Options \$ Please visit sdge.com/residential/pay-your-bill for more ways to pay your bill.



Online Bill Pay:
 Register to make a secure payment now or schedule your payment at myaccount.sdge.com, or visit your bank's website for home banking options.



Credit/Debit:
 Pay by credit/debit card via third party vendor (fee applies) by visiting sdge.com/residential/pay-your-bill. Click on the Bill Matrix link or call 1-800-386-0067 to make a payment.



Mobile:
 SDG&E's free app for your mobile device gives you more ways to connect with us. Visit sdge.com/mobileapps to download.



In Person:
 To find the nearest location and hours of operation, visit sdge.com/locations.



Need help paying your bill?
 For payment options or to make payment arrangements, visit us at sdge.com/assistance or call 1-800-411-7343



By Mail:
 Mail your check or money order, along with the payment stub at the bottom of your bill, in the enclosed envelope to SDG&E, PO Box 25111, Santa Ana, CA 92799-5111.

**Detail of Current Charges - Continued**

Electricity Generation (Details below) 25,770 kWh

SUMMER USAGE	On-Peak	Off-Peak	Super Off-Peak		
kWh used	153	4,645	20,972		
Rate/kWh	\$.08440	\$.07034	\$.05582		
14 Day Charge	\$12.91	+ \$326.73	+ \$1,170.66	=	1,510.30

Electricity Generation (Details below) 23,273 kWh

WINTER USAGE	On-Peak	Off-Peak	Super Off-Peak		
kWh used	748	4,892	17,633		
Rate/kWh	\$.09644	\$.08559	\$.07355		
15 Day Charge	\$72.14	+ \$418.71	+ \$1,296.91	=	1,787.76

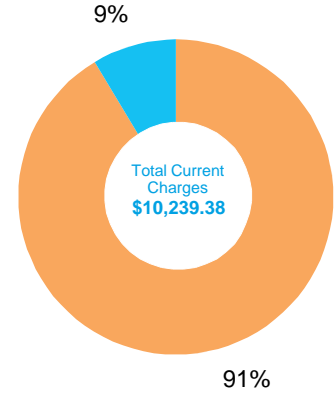
Rate Change This Billing Period:

There was a rate change on day 15 of your Billing Period. Therefore, your charges for the first 14 days were at Rate 1, and the remaining 15 days were at Rate 2.

Summer Generation Demand	3.6 kW x \$4.08 x 14/29	7.09
Winter Generation Demand	231.6 kW x \$.00 x 15/29	.00

Total Electric Charges \$10,199.63**TAXES & FEES ON ELECTRIC CHARGES**

	Amount (\$)
Franchise Fees on Electric Energy Supplied by Others	269.25 x 1.10% 2.97
State Surcharge Tax	49,043 kWh x \$.000290 14.22
State Regulatory Fee	49,043 kWh x \$.000460 22.56

Total Taxes & Fees on Electric Charges \$39.75**Total Electric Service \$10,239.38****Total Current Charges \$10,239.38****Breakdown of Current Charges**

The total current charges include the following components. Definitions for these terms are shown on page 5 of your bill.

Period: 10/17 - 11/15

Electric Charges

Electricity Generation	\$3,305.15
Transmission	\$2,486.11
Distribution	\$3,279.40
Nuclear Decommissioning	-\$2.45
Competition Transition Charge	\$51.00
Local Generation Charge	\$236.39
Reliability Services	\$.97

Other Charges & Credits (Electric)

Public Purpose Programs	\$573.81
DWR Bond Charge	\$269.25
Other	\$39.75

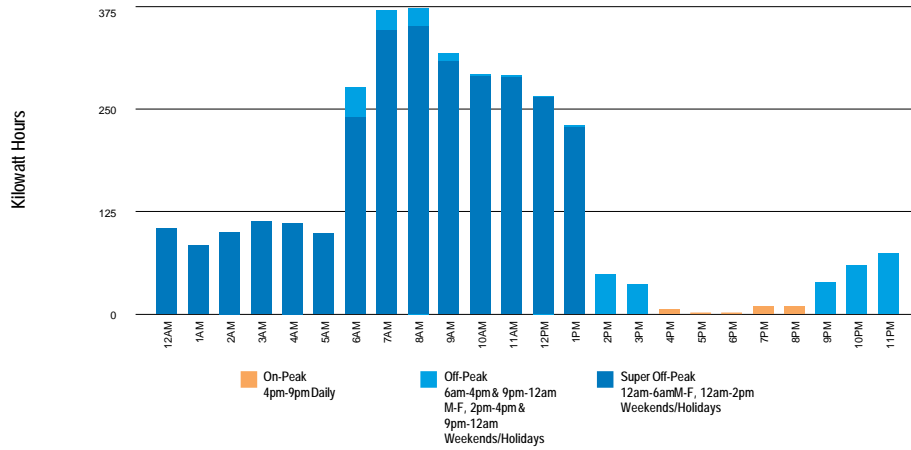
Total Current Charges \$10,239.38

Your Electricity Dashboard

*Charts may not display if usage data is unavailable

Period: 10/17 - 11/15

Average Hourly Electric Usage



⚡ For each day in the billing cycle, an hourly usage is calculated by peak. At the end of the bill cycle, hourly usage is averaged and displayed on the chart by peak.

Highest Usage Hour

Highest Usage Hour (Demand) this month:

⚡ **480.0 kW on November 11, 2018 from 7:00am to 8:00am**

Demand is the highest amount of electricity used at a given point in time.

Time of Use - Electricity

Season	kWh	Period
Summer		Jun 1 - Oct 31
On-Peak	153	4pm-9pm Daily
Off-Peak	4,645	6am-4pm & 9pm-12am M-F, 2pm-4pm & 9pm-12am Weekends/Holidays
Super Off	20,972	12am-6am M-F, 12am-2pm Weekends/Holidays
Total	25,770	
Winter		Nov 1 - Feb 28
On-Peak	748	4pm-9pm Daily
Off-Peak	4,892	6am-4pm & 9pm-12am M-F, 2pm-4pm & 9pm-12am Weekends/Holidays
Super Off	17,633	12am-6am M-F, 12am-2pm Weekends/Holidays
Total	23,273	



Definitions

California Climate Credit - Part of California's efforts to fight climate change, the credit results from fees charged by the state to reduce carbon pollution and increase use of cleaner forms of energy. These fees are returned to customers as savings on their electric bill. Households will receive the credit twice a year, and small businesses will receive it monthly. Learn how you can use these savings to further reduce your energy costs and help fight climate change at EnergyUpgradeCA.org/credit.

City of San Diego Franchise Fee Differential - A fee charged to SDG&E by the City of San Diego for the rights to operate within city streets.

Climate Zone - The CPUC established four Climatic Zones in California, based on annual average temperatures.

Competition Transition Charge (CTC) - Through this charge, SDG&E recovers costs for power plants and long-term power contracts approved by state regulators that have been made uneconomical by the shift to competition.

Delivery - Charges for the costs of owning, operating, and maintaining the transmission and distribution facilities to deliver power to customers.

Distribution - This line reflects charges to distribute power to customers. It includes power lines, poles, transformers, repair crews and emergency services.

DWR Charges - The Department of Water Resources (DWR) Bond Charge pays for bonds issued by DWR to cover the costs of purchasing power during the electricity crisis. All DWR charges, including the Cost Responsibility Surcharge component of DWR charges, are owned by DWR and not SDG&E. SDG&E collects charges for DWR as an agent of DWR.

Electricity Generation Charge - This charge is for the electricity you use and includes charges for the energy provided by both SDG&E and DWR. Electricity from DWR is owned by DWR, not SDG&E. If you purchase electricity from another supplier or buy electricity through SDG&E using hourly pricing, this charge appears only for informational purposes and will be offset by a credit.

Franchise Fees for Electric Energy Supplied by Others - This charge pays cities for the right to have transmission and distribution equipment (such as poles and wires) on city streets. This charge collects the franchise fee on the electricity purchased for you by DWR. The franchise fee on the electricity provided to you by SDG&E is included in the SDG&E Electricity Generation Charge.

kWh (kilowatt hour) - A common unit to measure electric energy consumption. A kWh equals 1,000 watts of electric power consumed for one hour of time.

Local Generation Charge - Recovers the costs associated with generation power suppliers that the CPUC has determined should be recovered from all benefiting customers.

Maximum Monthly Demand - The maximum demand during the current billing period.

Nuclear Decommissioning - This charge pays for the retirement of nuclear power plants.

Public Purpose Programs - This charge reflects the costs of certain state-mandated programs (such as low-income and energy efficiency programs).

Reliability Services (RS) - The Independent System Operator is required to ensure adequate generation to maintain electric system reliability. This means having enough generating facilities available to meet the demand for electricity at all times. The costs associated with this are passed on to SDG&E customers.

State Regulatory Fee - Charged to all utility users to pay for the California Public Utilities Commission (CPUC) operations.

State Surcharge Tax - Collected by the State of California for the conservation and development of energy resources in the state.

Total Rate Adjustment Component (TRAC) - This legislated charge is a conservation incentive. Customers with usage of less than 130% of baseline receive a subsidy credit. Customers with usage over 130% of baseline make up the difference and cover the cost of the subsidy.

Transmission - This charge pays for the delivery of high-voltage electricity from power plants to distribution points near your home or business. It includes the cost of high-voltage power lines and towers, as well as monitoring and control equipment.

SDG&E Policies and Notices

Electronic Check Processing - When you pay your bill by check, you authorize us to electronically process your payment. If your check is processed electronically, your checking account may be debited on the same day we receive the check. Your check will not be returned by your bank, however, the transaction will appear on your bank statement. *If you do not wish to participate in this program, please have your account number ready and call 1-866-534-5152.*

Rates & Rules - SDG&E's rate schedules and rules, on file and approved by the CPUC, are available on the Internet at www.sdge.com. Copies of applicable tariffs may also be obtained by calling 1-800-411-SDGE (7343) or visiting any company bill payment office.

Pay Before Date / Disconnection Policy - Your SDG&E bill is due and payable upon presentation and is past due if not paid within 15 days of the date mailed. If your payment has not been received by the "Due Date" shown on your bill, your SDG&E service is subject to disconnection, after proper notice has been provided. If your service is disconnected for non-payment, there may be additional service charges and you will be required to pay all past due SDG&E amounts before service is restored. Your SDG&E service could also be disconnected if the information provided on your application for service is false, incomplete or inaccurate. SDG&E will disconnect your services only for non-payment of those charges owed SDG&E.

If you are unable to pay your SDG&E bill in full due to a temporary financial hardship or due to a serious illness in the household, you need to call SDG&E before the expiration of

this notice. Employees, including multilingual staff, are available to assist with payment arrangements.

If SDG&E fails to offer you payment arrangements, you may write to the Consumer Affairs Branch of the California Public Utilities Commission (CPUC), State Office Building, 505 Van Ness Avenue, Room 2003, San Francisco, CA 94102, phone: 800-649-7570, email: consumer-affairs@cpuc.ca.gov, prior to disconnection of your SDG&E service. The Consumer Affairs Branch will review the complaint and issue its proposed resolution to you and SDG&E. If you are not satisfied, you may appeal the proposed resolution by filing a formal complaint. A more detailed explanation of disconnection policies, including your rights as an SDG&E customer, may be obtained by calling 1-800-411-SDGE (7343), or e-mail: info@sdge.com.

Disputed Bills - If you dispute the SDG&E charges on your bill, which may include electric energy charges that reflect electricity provided by the State of California Department of Water Resources (DWR), please request an explanation from SDG&E within five days. If you still believe you have been billed incorrectly, the full amount of the SDG&E charges and DWR charges on the bill should be deposited with the California Public Utilities Commission, State Office Building, 505 Van Ness Avenue, Room 2003, San Francisco, CA 94102, phone: 800-649-7570, email: consumer-affairs@cpuc.ca.gov, within 15 days of the mailing date of a past due notice for residential customers or seven days for non-residential customers, to avoid disconnection of your SDG&E service. Make the remittance payable to the CPUC, not SDG&E.

You may, in lieu of depositing the full amount of disputed bills with the CPUC, agree to an installment plan with SDG&E. A complaint may still be filed with the CPUC by stating your claim in writing and by providing supporting documentation.

The CPUC will not accept deposits when the dispute appears to be over matters that do not directly relate to the accuracy of the bill. Such matters include the quality of the utility's service, general level of rates, pending rate applications, and sources of fuel that are used to generate power.

Failure to make the deposit to the CPUC or payment arrangements with SDG&E by the expiration date of a past due notice, may result in the disconnection of your SDG&E service.

Re-Establishment of Credit / Deposit - If your SDG&E bill becomes past due and a written notice for disconnection is mailed, you may be required to re-establish your credit by paying a deposit.

Large Font Bill - You can sign-up to receive a large font bill by calling SDG&E at 1-800-411-SDGE (7343).



ACCOUNT NUMBER 1706 932 195 8
 SERVICE FOR
 VLY CENTER MUN WTR DIST
 29801 ANTHONY RD
 VALLEY CENTER, CA 92082

Sign up to go Paperless

Sign up to go Paperless today.
 Visit sdge.com/go-paperless-today.

Account Summary

Previous Balance			\$10,239.38
Payment Received	12/11/18	THANK YOU	- 10,239.38
Current Charges			+ 9,964.96
Total Amount Due			\$9,964.96

.7% Delayed Payment Charge Due If Paid After Jan 27, 2019.

Summary of Current Charges

(See page 2 for details)

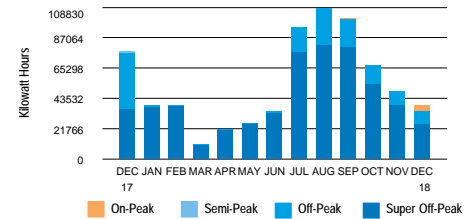
	Billing Period	Usage	Amount(\$)
Electric	Nov 15, 2018 - Dec 17, 2018	38,746 kWh	9,964.96
Total Charges this Month			\$9,964.96

Regulatory Notices

- All customers are required to pay a Competition Transition Charge as part of the charges above, including those who choose an electric service provider other than SDG&E.

DATE DUE	Jan 17, 2019
AMOUNT DUE	\$9,964.96

Electric Usage History (Total kWh used)



38,746 kWh used

- 1,210.8 Daily avg kWh
- 1,691.1 Daily avg kWh last month
- 49.9% Change in daily avg kWh from last year
- 28.4% Change in daily avg kWh from last month
- 482.4 Max monthly demand
- 32 Days in billing cycle

PLEASE KEEP THIS PORTION FOR YOUR RECORDS. (FAVOR DE GUARDAR ESTA PARTE PARA SUS REGISTROS.)
 PLEASE RETURN THIS PORTION WITH YOUR PAYMENT. (FAVOR DE DEVOLVER ESTA PARTE CON SU PAGO.)



SERVICE ADDRESS: 29801 ANTHONY RD VC 92082

Save Paper & Postage
 PAY ONLINE
 sdge.com

ACCOUNT NUMBER
1706 932 195 8

DATE DUE	Jan 17, 2019
AMOUNT DUE	\$9,964.96

Please enter amount enclosed.

\$

Write account number on check and make payable to **San Diego Gas & Electric**.

VLY CENTER MUN WTR DIST
 MILLER PUMP STATION
 PO BOX 67
 VALLEY CENTER CA 92082-0067

SAN DIEGO GAS & ELECTRIC
 PO BOX 25111
 SANTA ANA CA 92799-5111



Detail of Current Charges

Electric Service

Rate: Time of Use - PAT-1-Commercial Climate Zone: Inland
 Billing Period: 11/15/18 - 12/17/18 Total Days: 32
 Meter Number: 06700423 (Next scheduled read date Jan 18, 2019) Cycle: 13
 Meter Constant: 300.000 Billing Voltage Level: Secondary
 Circuit: 1022 Block: 153A
 Total Usage: 38,746 (Usage based on interval data)

ELECTRIC CHARGES

	Amount(\$)
Customer Charge	92.30

Electricity Delivery (Details below)	38,746 kWh	
<i>WINTER USAGE</i>	On-Peak	Off-Peak
kWh used	4,164	9,943
Rate/kWh	\$.00174	\$.00174
Charge	\$7.25	+ \$17.30
		+ \$42.87
		= 67.42

Winter On-Peak Demand	234.0 kW x \$.00	.00
Winter Time Of Use Demand	236.4 kW x \$13.40	3,167.76
Winter Non-Coincident Demand	482.4 kW x \$6.90	3,328.56

DWR Bond Charge 38,746 kWh x \$.00549 212.72

Electricity Generation (Details below)	38,746 kWh	
<i>WINTER USAGE</i>	On-Peak	Off-Peak
kWh used	4,164	9,943
Rate/kWh	\$.09644	\$.08559
Charge	\$401.58	+ \$851.02
		+ \$1,812.20
		= 3,064.80

Winter Generation Demand 234.0 kW x \$.00 .00

Total Electric Charges \$9,933.56

(Continued on next page)

Important Phone Numbers

1-800-336-SDGE (7343) English
1-800-311-SDGE (7343) Español
1-877-889-SDGE (7343) TTY

M-F, 7am-8pm, Sat, 7am-6pm

For emergencies and to report outages, please call 24 hours a day, 7 days a week. **1-800-611-7343**

To locate underground cables & gas pipes, please call DigAlert, Monday-Friday, 6am-7pm. **8-1-1**

To make a payment using your credit or debit card via a third party vendor, call. **1-800-386-0067**

Payment Options \$ Please visit sdge.com/residential/pay-your-bill for more ways to pay your bill.



Online Bill Pay:

Register to make a secure payment now or schedule your payment at myaccount.sdge.com, or visit your bank's website for home banking options.



Credit/Debit:

Pay by credit/debit card via third party vendor (fee applies) by visiting sdge.com/residential/pay-your-bill. Click on the Bill Matrix link or call 1-800-386-0067 to make a payment.



Mobile:

SDG&E's free app for your mobile device gives you more ways to connect with us. Visit sdge.com/mobileapps to download.



In Person:

To find the nearest location and hours of operation, visit sdge.com/locations.



Need help paying your bill?

For payment options or to make payment arrangements, visit us at sdge.com/assistance or call 1-800-411-7343



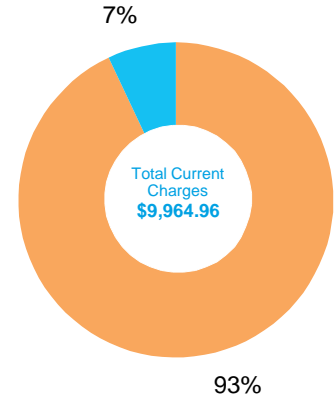
By Mail:

Mail your check or money order, along with the payment stub at the bottom of your bill, in the enclosed envelope to SDG&E, PO Box 25111, Santa Ana, CA 92799-5111.

Detail of Current Charges - Continued

TAXES & FEES ON ELECTRIC CHARGES		Amount (\$)
Franchise Fees on Electric Energy Supplied by Others	212.72 x 1.10%	2.34
State Surcharge Tax	38,746 kWh x \$.000290	11.24
State Regulatory Fee	38,746 kWh x \$.000460	17.82
Total Taxes & Fees on Electric Charges		\$31.40
Total Electric Service		\$9,964.96
Total Current Charges		\$9,964.96

Breakdown of Current Charges



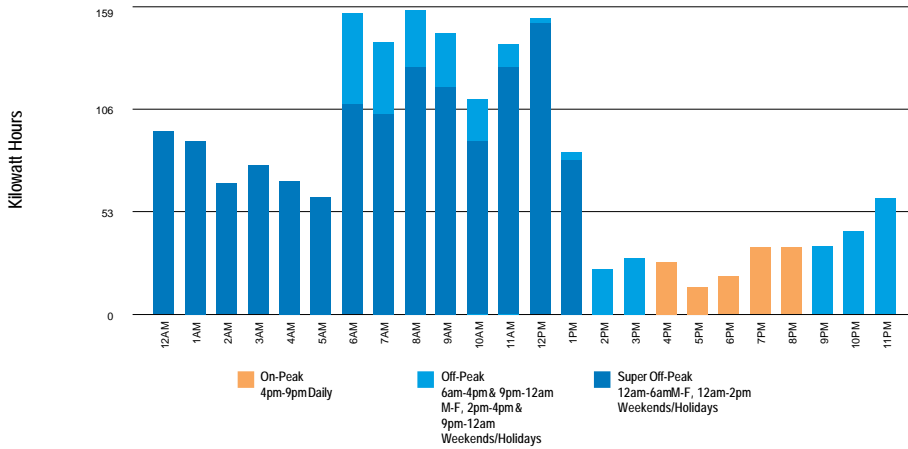
The total current charges include the following components. Definitions for these terms are shown on page 5 of your bill.

Electric Charges	
Electricity Generation	\$3,064.80
Transmission	\$2,676.08
Distribution	\$3,300.74
Nuclear Decommissioning	-\$1.94
Competition Transition Charge	\$40.30
Local Generation Charge	\$186.76
Reliability Services	\$.77
Other Charges & Credits (Electric)	
Public Purpose Programs	\$453.33
DWR Bond Charge	\$212.72
Other	\$31.40
Total Current Charges	\$9,964.96

Your Electricity Dashboard

*Charts may not display if usage data is unavailable

Average Hourly Electric Usage



⚡ For each day in the billing cycle, an hourly usage is calculated by peak. At the end of the bill cycle, hourly usage is averaged and displayed on the chart by peak.

Highest Usage Hour

Highest Usage Hour (Demand) this month:

⚡ **482.4 kW on November 17, 2018 from 12:00am to 1:00am**

Demand is the highest amount of electricity used at a given point in time.

Time of Use - Electricity

Winter	kWh	Nov 1 - Feb 28
On-Peak	4,164	4pm-9pm Daily
Off-Peak	9,943	6am-4pm & 9pm-12am M-F, 2pm-4pm & 9pm-12am Weekends/Holidays
Super Off	24,639	12am-6am M-F, 12am-2pm Weekends/Holidays
Total	38,746	



Definitions

California Climate Credit - Part of California's efforts to fight climate change, the credit results from fees charged by the state to reduce carbon pollution and increase use of cleaner forms of energy. These fees are returned to customers as savings on their electric bill. Households will receive the credit twice a year, and small businesses will receive it monthly. Learn how you can use these savings to further reduce your energy costs and help fight climate change at EnergyUpgradeCA.org/credit.

City of San Diego Franchise Fee Differential - A fee charged to SDG&E by the City of San Diego for the rights to operate within city streets.

Climate Zone - The CPUC established four Climatic Zones in California, based on annual average temperatures.

Competition Transition Charge (CTC) - Through this charge, SDG&E recovers costs for power plants and long-term power contracts approved by state regulators that have been made uneconomical by the shift to competition.

Delivery - Charges for the costs of owning, operating, and maintaining the transmission and distribution facilities to deliver power to customers.

Distribution - This line reflects charges to distribute power to customers. It includes power lines, poles, transformers, repair crews and emergency services.

DWR Charges - The Department of Water Resources (DWR) Bond Charge pays for bonds issued by DWR to cover the costs of purchasing power during the electricity crisis. All DWR charges, including the Cost Responsibility Surcharge component of DWR charges, are owned by DWR and not SDG&E. SDG&E collects charges for DWR as an agent of DWR.

Electricity Generation Charge - This charge is for the electricity you use and includes charges for the energy provided by both SDG&E and DWR. Electricity from DWR is owned by DWR, not SDG&E. If you purchase electricity from another supplier or buy electricity through SDG&E using hourly pricing, this charge appears only for informational purposes and will be offset by a credit.

Franchise Fees for Electric Energy Supplied by Others - This charge pays cities for the right to have transmission and distribution equipment (such as poles and wires) on city streets. This charge collects the franchise fee on the electricity purchased for you by DWR. The franchise fee on the electricity provided to you by SDG&E is included in the SDG&E Electricity Generation Charge.

kWh (kilowatt hour) - A common unit to measure electric energy consumption. A kWh equals 1,000 watts of electric power consumed for one hour of time.

Local Generation Charge - Recovers the costs associated with generation power suppliers that the CPUC has determined should be recovered from all benefiting customers.

Maximum Monthly Demand - The maximum demand during the current billing period.

Nuclear Decommissioning - This charge pays for the retirement of nuclear power plants.

Public Purpose Programs - This charge reflects the costs of certain state-mandated programs (such as low-income and energy efficiency programs).

Reliability Services (RS) - The Independent System Operator is required to ensure adequate generation to maintain electric system reliability. This means having enough generating facilities available to meet the demand for electricity at all times. The costs associated with this are passed on to SDG&E customers.

State Regulatory Fee - Charged to all utility users to pay for the California Public Utilities Commission (CPUC) operations.

State Surcharge Tax - Collected by the State of California for the conservation and development of energy resources in the state.

Total Rate Adjustment Component (TRAC) - This legislated charge is a conservation incentive. Customers with usage of less than 130% of baseline receive a subsidy credit. Customers with usage over 130% of baseline make up the difference and cover the cost of the subsidy.

Transmission - This charge pays for the delivery of high-voltage electricity from power plants to distribution points near your home or business. It includes the cost of high-voltage power lines and towers, as well as monitoring and control equipment.

SDG&E Policies and Notices

Electronic Check Processing - When you pay your bill by check, you authorize us to electronically process your payment. If your check is processed electronically, your checking account may be debited on the same day we receive the check. Your check will not be returned by your bank, however, the transaction will appear on your bank statement. *If you do not wish to participate in this program, please have your account number ready and call 1-866-534-5152.*

Rates & Rules - SDG&E's rate schedules and rules, on file and approved by the CPUC, are available on the Internet at www.sdge.com. Copies of applicable tariffs may also be obtained by calling 1-800-411-SDGE (7343) or visiting any company bill payment office.

Pay Before Date / Disconnection Policy - Your SDG&E bill is due and payable upon presentation and is past due if not paid within 15 days of the date mailed. If your payment has not been received by the "Due Date" shown on your bill, your SDG&E service is subject to disconnection, after proper notice has been provided. If your service is disconnected for non-payment, there may be additional service charges and you will be required to pay all past due SDG&E amounts before service is restored. Your SDG&E service could also be disconnected if the information provided on your application for service is false, incomplete or inaccurate. SDG&E will disconnect your services only for non-payment of those charges owed SDG&E.

If you are unable to pay your SDG&E bill in full due to a temporary financial hardship or due to a serious illness in the household, you need to call SDG&E before the expiration of

this notice. Employees, including multilingual staff, are available to assist with payment arrangements.

If SDG&E fails to offer you payment arrangements, you may write to the Consumer Affairs Branch of the California Public Utilities Commission (CPUC), State Office Building, 505 Van Ness Avenue, Room 2003, San Francisco, CA 94102, phone: 800-649-7570, email: consumer-affairs@cpuc.ca.gov, prior to disconnection of your SDG&E service. The Consumer Affairs Branch will review the complaint and issue its proposed resolution to you and SDG&E. If you are not satisfied, you may appeal the proposed resolution by filing a formal complaint. A more detailed explanation of disconnection policies, including your rights as an SDG&E customer, may be obtained by calling 1-800-411-SDGE (7343), or e-mail: info@sdge.com.

Disputed Bills - If you dispute the SDG&E charges on your bill, which may include electric energy charges that reflect electricity provided by the State of California Department of Water Resources (DWR), please request an explanation from SDG&E within five days. If you still believe you have been billed incorrectly, the full amount of the SDG&E charges and DWR charges on the bill should be deposited with the California Public Utilities Commission, State Office Building, 505 Van Ness Avenue, Room 2003, San Francisco, CA 94102, phone: 800-649-7570, email: consumer-affairs@cpuc.ca.gov, within 15 days of the mailing date of a past due notice for residential customers or seven days for non-residential customers, to avoid disconnection of your SDG&E service. Make the remittance payable to the CPUC, not SDG&E.

You may, in lieu of depositing the full amount of disputed bills with the CPUC, agree to an installment plan with SDG&E. A complaint may still be filed with the CPUC by stating your claim in writing and by providing supporting documentation.

The CPUC will not accept deposits when the dispute appears to be over matters that do not directly relate to the accuracy of the bill. Such matters include the quality of the utility's service, general level of rates, pending rate applications, and sources of fuel that are used to generate power.

Failure to make the deposit to the CPUC or payment arrangements with SDG&E by the expiration date of a past due notice, may result in the disconnection of your SDG&E service.

Re-Establishment of Credit / Deposit - If your SDG&E bill becomes past due and a written notice for disconnection is mailed, you may be required to re-establish your credit by paying a deposit.

Large Font Bill - You can sign-up to receive a large font bill by calling SDG&E at 1-800-411-SDGE (7343).



ACCOUNT NUMBER 1706 932 195 8
 SERVICE FOR
 VLY CENTER MUN WTR DIST
 29801 ANTHONY RD
 VALLEY CENTER, CA 92082

Sign up to go Paperless

Sign up to go Paperless today.
 Visit sdge.com/go-paperless-today.

Account Summary

Previous Balance			\$9,964.96
Payment Received	01/15/19	THANK YOU	- 9,964.96
Current Charges			+ 8,451.66
Total Amount Due			\$8,451.66

.7% Delayed Payment Charge Due If Paid After Feb 25, 2019.

Summary of Current Charges

(See page 2 for details)

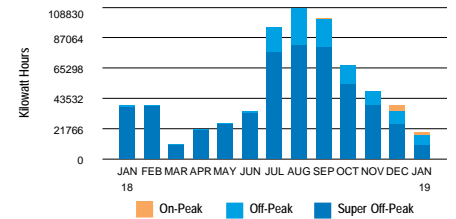
	Billing Period	Usage	Amount(\$)
Electric	Dec 17, 2018 - Jan 17, 2019	19,296 kWh	8,451.66
Total Charges this Month			\$8,451.66

Regulatory Notices

- All customers are required to pay a Competition Transition Charge as part of the charges above, including those who choose an electric service provider other than SDG&E.

DATE DUE	Feb 15, 2019
AMOUNT DUE	\$8,451.66

Electric Usage History (Total kWh used)



19,296 kWh used

- 622.5 Daily avg kWh
- 1,210.8 Daily avg kWh last month
- 50.0% Change in daily avg kWh from last year
- 48.6% Change in daily avg kWh from last month
- 262.8 Max monthly demand
- 31 Days in billing cycle

PLEASE KEEP THIS PORTION FOR YOUR RECORDS. (FAVOR DE GUARDAR ESTA PARTE PARA SUS REGISTROS.)
 PLEASE RETURN THIS PORTION WITH YOUR PAYMENT. (FAVOR DE DEVOLVER ESTA PARTE CON SU PAGO.)



SERVICE ADDRESS: 29801 ANTHONY RD VC 92082

Save Paper & Postage
 PAY ONLINE
 sdge.com

ACCOUNT NUMBER
 1706 932 195 8

DATE DUE	Feb 15, 2019
AMOUNT DUE	\$8,451.66

Please enter amount enclosed.

\$

Write account number on check and make payable to **San Diego Gas & Electric**.

VLY CENTER MUN WTR DIST
 MILLER PUMP STATION
 PO BOX 67
 VALLEY CENTER CA 92082-0067

SAN DIEGO GAS & ELECTRIC
 PO BOX 25111
 SANTA ANA CA 92799-5111



Detail of Current Charges

Electric Service

Rate: Time of Use - PAT-1-Commercial Climate Zone: Inland
 Billing Period: 12/17/18 - 1/17/19 Total Days: 31
 Meter Number: 06700423 (Next scheduled read date Feb 19, 2019) Cycle: 13
 Meter Constant: 300.000 Billing Voltage Level: Secondary
 Circuit: 1022 Block: 153A
 Total Usage: 19,296 (Usage based on interval data)

ELECTRIC CHARGES

Customer Charge Amount(\$) 99.53

Electricity Delivery (Details below) 9,112 kWh

WINTER USAGE	On-Peak	Off-Peak	Super Off-Peak	
kWh used	1,164	3,086	4,862	
Rate/kWh	\$.00174	\$.00174	\$.00174	
14 Day Charge	\$2.03	+ \$5.37	+ \$8.46	= 15.86

Electricity Delivery (Details below) 10,184 kWh

WINTER USAGE	On-Peak	Off-Peak	Super Off-Peak	
kWh used	838	4,511	4,835	
Rate/kWh	\$.00578	\$.00578	\$.00578	
17 Day Charge	\$4.84	+ \$26.07	+ \$27.95	= 58.86

Rate Change This Billing Period:
 There was a rate change on day 15 of your Billing Period. Therefore, your charges for the first 14 days were at Rate 1, and the remaining 17 days were at Rate 2.

Winter On-Peak Demand	234.0 kW x \$.00	.00
Winter Time of Use Demand	262.8 kW x \$13.40 x 14/31	1,590.36
Winter Time Of Use Demand	262.8 kW x \$12.73 x 17/31	1,834.60
Winter Non-Coincident Demand	479.4 kW x \$6.90	3,307.86
DWR Bond Charge	9,112 kWh x \$.00549	50.02
DWR Bond Charge	10,184 kWh x \$.00503	51.23

(Continued on next page)

Important Phone Numbers

1-800-336-SDGE (7343) English
1-800-311-SDGE (7343) Español
1-877-889-SDGE (7343) TTY

M-F, 7am-8pm, Sat, 7am-6pm

For emergencies and to report outages, please call 24 hours a day, 7 days a week. **1-800-611-7343**

To locate underground cables & gas pipes, please call DigAlert, Monday-Friday, 6am-7pm. **8-1-1**

To make a payment using your credit or debit card via a third party vendor, call. **1-800-386-0067**

Payment Options \$ Please visit sdge.com/residential/pay-your-bill for more ways to pay your bill.



Online Bill Pay:

Register to make a secure payment now or schedule your payment at myaccount.sdge.com, or visit your bank's website for home banking options.



Credit/Debit:

Pay by credit/debit card via third party vendor (fee applies) by visiting sdge.com/residential/pay-your-bill. Click on the Bill Matrix link or call 1-800-386-0067 to make a payment.



Mobile:

SDG&E's free app for your mobile device gives you more ways to connect with us. Visit sdge.com/mobileapps to download.



In Person:

To find the nearest location and hours of operation, visit sdge.com/locations.



Need help paying your bill?

For payment options or to make payment arrangements, visit us at sdge.com/assistance or call 1-800-411-7343



By Mail:

Mail your check or money order, along with the payment stub at the bottom of your bill, in the enclosed envelope to SDG&E, PO Box 25111, Santa Ana, CA 92799-5111.

**Detail of Current Charges - Continued**

Electricity Generation (Details below) 9,112 kWh

WINTER USAGE	On-Peak	Off-Peak	Super Off-Peak	
kWh used	1,164	3,086	4,862	
Rate/kWh	\$.09644	\$.08559	\$.07355	
14 Day Charge	\$112.26	+ \$264.13	+ \$357.60	= 733.99

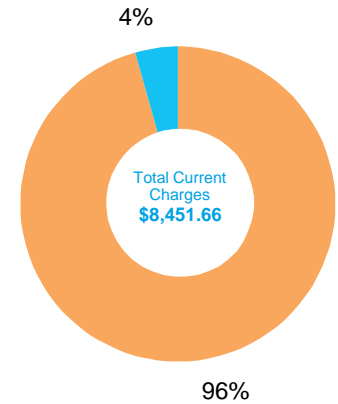
Electricity Generation (Details below) 10,184 kWh

WINTER USAGE	On-Peak	Off-Peak	Super Off-Peak	
kWh used	838	4,511	4,835	
Rate/kWh	\$.08136	\$.07221	\$.06206	
17 Day Charge	\$68.18	+ \$325.74	+ \$300.06	= 693.98

DWR Revenue Adjustment				- .31
Winter Generation Demand	234.0 kW x \$.00			.00

Total Electric Charges \$8,435.98**TAXES & FEES ON ELECTRIC CHARGES**

	Amount (\$)
Franchise Fees on Electric Energy Supplied by Others 100.94 x 1.10%	1.11
State Surcharge Tax 9,112 kWh x \$.000290	2.64
State Surcharge Tax 10,184 kWh x \$.000300	3.06
State Regulatory Fee 19,296 kWh x \$.000460	8.87

Total Taxes & Fees on Electric Charges \$15.68**Total Electric Service \$8,451.66****Total Current Charges \$8,451.66****Breakdown of Current Charges**

The total current charges include the following components. Definitions for these terms are shown on page 5 of your bill.

Period: 12/17 - 01/17

Electric Charges

Electricity Generation	\$1,427.97
Transmission	\$3,005.11
Distribution	\$3,539.97
Nuclear Decommissioning	-.77
Competition Transition Charge	\$13.54
Local Generation Charge	\$95.15
Reliability Services	\$.29

Other Charges & Credits (Electric)

Public Purpose Programs	\$253.78
DWR Bond Charge	\$101.25
DWR Revenue Adjustment	-.31
Other	\$15.68

Total Current Charges \$8,451.66

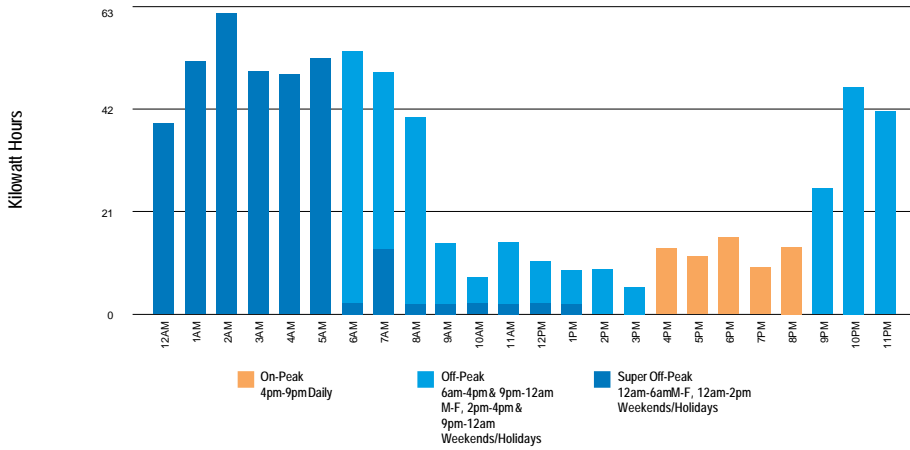


Your Electricity Dashboard

*Charts may not display if usage data is unavailable

Period: 12/17 - 01/17

Average Hourly Electric Usage



⚡ For each day in the billing cycle, an hourly usage is calculated by peak. At the end of the bill cycle, hourly usage is averaged and displayed on the chart by peak.

Highest Usage Hour

Highest Usage Hour (Demand) this month:

⚡ **262.8 kW on January 02, 2019 from 2:00pm to 3:00pm**

Demand is the highest amount of electricity used at a given point in time.

Time of Use - Electricity

Winter	kWh	Nov 1 - Feb 28
On-Peak	2,002	4pm-9pm Daily
Off-Peak	7,597	6am-4pm & 9pm-12am M-F, 2pm-4pm & 9pm-12am Weekends/Holidays
Super Off	9,697	12am-6am M-F, 12am-2pm Weekends/Holidays
Total	19,296	



Definitions

California Climate Credit - Part of California's efforts to fight climate change, the credit results from fees charged by the state to reduce carbon pollution and increase use of cleaner forms of energy. These fees are returned to customers as savings on their electric bill. Households will receive the credit twice a year, and small businesses will receive it monthly. Learn how you can use these savings to further reduce your energy costs and help fight climate change at EnergyUpgradeCA.org/credit.

City of San Diego Franchise Fee Differential - A fee charged to SDG&E by the City of San Diego for the rights to operate within city streets.

Climate Zone - The CPUC established four Climatic Zones in California, based on annual average temperatures.

Competition Transition Charge (CTC) - Through this charge, SDG&E recovers costs for power plants and long-term power contracts approved by state regulators that have been made uneconomical by the shift to competition.

Delivery - Charges for the costs of owning, operating, and maintaining the transmission and distribution facilities to deliver power to customers.

Distribution - This line reflects charges to distribute power to customers. It includes power lines, poles, transformers, repair crews and emergency services.

DWR Charges - The Department of Water Resources (DWR) Bond Charge pays for bonds issued by DWR to cover the costs of purchasing power during the electricity crisis. All DWR charges, including the Cost Responsibility Surcharge component of DWR charges, are owned by DWR and not SDG&E. SDG&E collects charges for DWR as an agent of DWR.

Electricity Generation Charge - This charge is for the electricity you use and includes charges for the energy provided by both SDG&E and DWR. Electricity from DWR is owned by DWR, not SDG&E. If you purchase electricity from another supplier or buy electricity through SDG&E using hourly pricing, this charge appears only for informational purposes and will be offset by a credit.

Franchise Fees for Electric Energy Supplied by Others - This charge pays cities for the right to have transmission and distribution equipment (such as poles and wires) on city streets. This charge collects the franchise fee on the electricity purchased for you by DWR. The franchise fee on the electricity provided to you by SDG&E is included in the SDG&E Electricity Generation Charge.

kWh (kilowatt hour) - A common unit to measure electric energy consumption. A kWh equals 1,000 watts of electric power consumed for one hour of time.

Local Generation Charge - Recovers the costs associated with generation power suppliers that the CPUC has determined should be recovered from all benefiting customers.

Maximum Monthly Demand - The maximum demand during the current billing period.

Nuclear Decommissioning - This charge pays for the retirement of nuclear power plants.

Public Purpose Programs - This charge reflects the costs of certain state-mandated programs (such as low-income and energy efficiency programs).

Reliability Services (RS) - The Independent System Operator is required to ensure adequate generation to maintain electric system reliability. This means having enough generating facilities available to meet the demand for electricity at all times. The costs associated with this are passed on to SDG&E customers.

State Regulatory Fee - Charged to all utility users to pay for the California Public Utilities Commission (CPUC) operations.

State Surcharge Tax - Collected by the State of California for the conservation and development of energy resources in the state.

Total Rate Adjustment Component (TRAC) - This legislated charge is a conservation incentive. Customers with usage of less than 130% of baseline receive a subsidy credit. Customers with usage over 130% of baseline make up the difference and cover the cost of the subsidy.

Transmission - This charge pays for the delivery of high-voltage electricity from power plants to distribution points near your home or business. It includes the cost of high-voltage power lines and towers, as well as monitoring and control equipment.

SDG&E Policies and Notices

Electronic Check Processing - When you pay your bill by check, you authorize us to electronically process your payment. If your check is processed electronically, your checking account may be debited on the same day we receive the check. Your check will not be returned by your bank, however, the transaction will appear on your bank statement. *If you do not wish to participate in this program, please have your account number ready and call 1-866-534-5152.*

Rates & Rules - SDG&E's rate schedules and rules, on file and approved by the CPUC, are available on the Internet at www.sdge.com. Copies of applicable tariffs may also be obtained by calling 1-800-411-SDGE (7343) or visiting any company bill payment office.

Pay Before Date / Disconnection Policy - Your SDG&E bill is due and payable upon presentation and is past due if not paid within 15 days of the date mailed. If your payment has not been received by the "Due Date" shown on your bill, your SDG&E service is subject to disconnection, after proper notice has been provided. If your service is disconnected for non-payment, there may be additional service charges and you will be required to pay all past due SDG&E amounts before service is restored. Your SDG&E service could also be disconnected if the information provided on your application for service is false, incomplete or inaccurate. SDG&E will disconnect your services only for non-payment of those charges owed SDG&E.

If you are unable to pay your SDG&E bill in full due to a temporary financial hardship or due to a serious illness in the household, you need to call SDG&E before the expiration of

this notice. Employees, including multilingual staff, are available to assist with payment arrangements.

If SDG&E fails to offer you payment arrangements, you may write to the Consumer Affairs Branch of the California Public Utilities Commission (CPUC), State Office Building, 505 Van Ness Avenue, Room 2003, San Francisco, CA 94102, phone: 800-649-7570, email: consumer-affairs@cpuc.ca.gov, prior to disconnection of your SDG&E service. The Consumer Affairs Branch will review the complaint and issue its proposed resolution to you and SDG&E. If you are not satisfied, you may appeal the proposed resolution by filing a formal complaint. A more detailed explanation of disconnection policies, including your rights as an SDG&E customer, may be obtained by calling 1-800-411-SDGE (7343), or e-mail: info@sdge.com.

Disputed Bills - If you dispute the SDG&E charges on your bill, which may include electric energy charges that reflect electricity provided by the State of California Department of Water Resources (DWR), please request an explanation from SDG&E within five days. If you still believe you have been billed incorrectly, the full amount of the SDG&E charges and DWR charges on the bill should be deposited with the California Public Utilities Commission, State Office Building, 505 Van Ness Avenue, Room 2003, San Francisco, CA 94102, phone: 800-649-7570, email: consumer-affairs@cpuc.ca.gov, within 15 days of the mailing date of a past due notice for residential customers or seven days for non-residential customers, to avoid disconnection of your SDG&E service. Make the remittance payable to the CPUC, not SDG&E.

You may, in lieu of depositing the full amount of disputed bills with the CPUC, agree to an installment plan with SDG&E. A complaint may still be filed with the CPUC by stating your claim in writing and by providing supporting documentation.

The CPUC will not accept deposits when the dispute appears to be over matters that do not directly relate to the accuracy of the bill. Such matters include the quality of the utility's service, general level of rates, pending rate applications, and sources of fuel that are used to generate power.

Failure to make the deposit to the CPUC or payment arrangements with SDG&E by the expiration date of a past due notice, may result in the disconnection of your SDG&E service.

Re-Establishment of Credit / Deposit - If your SDG&E bill becomes past due and a written notice for disconnection is mailed, you may be required to re-establish your credit by paying a deposit.

Large Font Bill - You can sign-up to receive a large font bill by calling SDG&E at 1-800-411-SDGE (7343).



ACCOUNT NUMBER 1706 932 195 8
 SERVICE FOR
 VLY CENTER MUN WTR DIST
 29801 ANTHONY RD
 VALLEY CENTER, CA 92082

Sign up to go Paperless



Sign up to go Paperless today.
 Visit sdge.com/go-paperless-today.

You may have rate options. Please call us at 1-800-336-7343(SDGE) or visit our website at sdge.com.

Account Summary

Previous Balance			\$8,451.66
Payment Received	02/12/19	THANK YOU	- 8,451.66
Current Charges			+ 6,411.52
Total Amount Due			\$6,411.52

.7% Delayed Payment Charge Due If Paid After Mar 29, 2019.

Summary of Current Charges

(See page 2 for details)

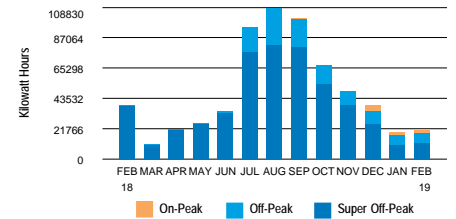
	Billing Period	Usage	Amount(\$)
Electric	Jan 17, 2019 - Feb 18, 2019	20,341 kWh	6,411.52
Total Charges this Month			\$6,411.52

Regulatory Notices

- All customers are required to pay a Competition Transition Charge as part of the charges above, including those who choose an electric service provider other than SDG&E.

DATE DUE	Mar 19, 2019
AMOUNT DUE	\$6,411.52

Electric Usage History (Total kWh used)



20,341 kWh used

- 635.7 Daily avg kWh
- 622.5 Daily avg kWh last month
- 52.4% ↓ Change in daily avg kWh from last year
- 2.1% ↑ Change in daily avg kWh from last month
- 235.2 Max monthly demand
- 32 ↻ Days in billing cycle

PLEASE KEEP THIS PORTION FOR YOUR RECORDS. (FAVOR DE GUARDAR ESTA PARTE PARA SUS REGISTROS.)
 PLEASE RETURN THIS PORTION WITH YOUR PAYMENT. (FAVOR DE DEVOLVER ESTA PARTE CON SU PAGO.)



SERVICE ADDRESS: 29801 ANTHONY RD VC 92082

Save Paper & Postage
 PAY ONLINE
sdge.com

ACCOUNT NUMBER
1706 932 195 8

DATE DUE	Mar 19, 2019
AMOUNT DUE	\$6,411.52

Please enter amount enclosed.

\$

Write account number on check and make payable to **San Diego Gas & Electric**.

VLY CENTER MUN WTR DIST
 MILLER PUMP STATION
 PO BOX 67
 VALLEY CENTER CA 92082-0067

SAN DIEGO GAS & ELECTRIC
 PO BOX 25111
 SANTA ANA CA 92799-5111



Detail of Current Charges

Electric Service

Rate: Time of Use - PAT-1-Commercial Climate Zone: Inland
 Billing Period: 1/17/19 - 2/18/19 Total Days: 32
 Meter Number: 06700423 (Next scheduled read date Mar 20, 2019) Cycle: 13
 Meter Constant: 300.000 Billing Voltage Level: Secondary
 Circuit: 1022 Block: 153A
 Total Usage: 20,341 (Usage based on interval data)

ELECTRIC CHARGES

Customer Charge				Amount(\$)	105.49
Electricity Delivery (Details below)	20,341 kWh				
<i>WINTER USAGE</i>	On-Peak	Off-Peak	Super Off-Peak		
kWh used	1,506	6,963	11,872		
Rate/kWh	\$.00578	\$.00578	\$.00578		
Charge	\$8.70	+ \$40.25	+ \$68.62	=	117.57
Winter On-Peak Demand	232.8 kW x \$.00				.00
Winter Time Of Use Demand	235.2 kW x \$12.73				2,994.10
Winter Non-Coincident Demand	248.4 kW x \$6.90				1,713.96
DWR Bond Charge	20,341 kWh x \$.00503				102.32
Electricity Generation (Details below)	20,341 kWh				
<i>WINTER USAGE</i>	On-Peak	Off-Peak	Super Off-Peak		
kWh used	1,506	6,963	11,872		
Rate/kWh	\$.08136	\$.07221	\$.06206		
Charge	\$122.53	+ \$502.80	+ \$736.78	=	1,362.11
DWR Revenue Adjustment					-.61
Winter Generation Demand	232.8 kW x \$.00				.00

Total Electric Charges \$6,394.94

(Continued on next page)

Important Phone Numbers

1-800-336-SDGE (7343) English
1-800-311-SDGE (7343) Español
1-877-889-SDGE (7343) TTY

M-F, 7am-8pm, Sat, 7am-6pm

For emergencies and to report outages, please call 24 hours a day, 7 days a week. **1-800-611-7343**

To locate underground cables & gas pipes, please call DigAlert, Monday-Friday, 6am-7pm. **8-1-1**

To make a payment using your credit or debit card via a third party vendor, call. **1-800-386-0067**

Payment Options \$ Please visit sdge.com/residential/pay-your-bill for more ways to pay your bill.



Online Bill Pay:

Register to make a secure payment now or schedule your payment at myaccount.sdge.com, or visit your bank's website for home banking options.



Credit/Debit:

Pay by credit/debit card via third party vendor (fee applies) by visiting sdge.com/residential/pay-your-bill. Click on the Bill Matrix link or call 1-800-386-0067 to make a payment.



Mobile:

SDG&E's free app for your mobile device gives you more ways to connect with us. Visit sdge.com/mobileapps to download.



In Person:

To find the nearest location and hours of operation, visit sdge.com/locations.



Need help paying your bill?

For payment options or to make payment arrangements, visit us at sdge.com/assistance or call 1-800-411-7343



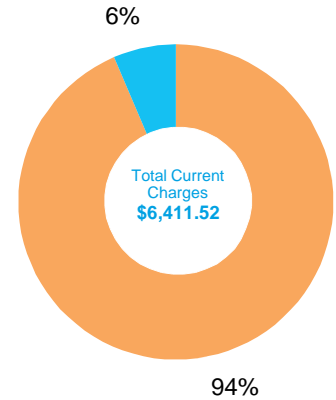
By Mail:

Mail your check or money order, along with the payment stub at the bottom of your bill, in the enclosed envelope to SDG&E, PO Box 25111, Santa Ana, CA 92799-5111.

Detail of Current Charges - Continued

TAXES & FEES ON ELECTRIC CHARGES		Amount (\$)
Franchise Fees on Electric Energy Supplied by Others	101.71 x 1.10%	1.12
State Surcharge Tax	20,341 kWh x \$.000300	6.10
State Regulatory Fee	20,341 kWh x \$.000460	9.36
Total Taxes & Fees on Electric Charges		\$16.58
Total Electric Service		\$6,411.52
Total Current Charges		\$6,411.52

Breakdown of Current Charges



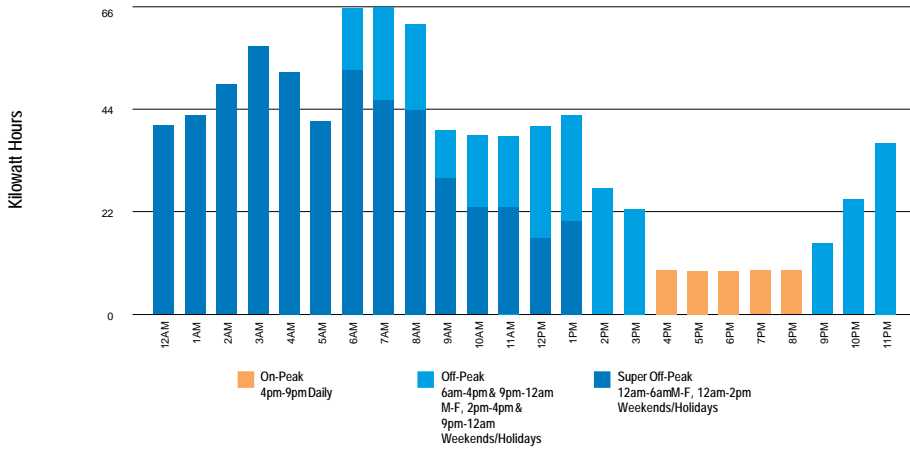
The total current charges include the following components. Definitions for these terms are shown on page 5 of your bill.

Electric Charges	
Electricity Generation	\$1,362.11
Transmission	\$1,415.76
Distribution	\$3,111.39
Nuclear Decommissioning	-.61
Competition Transition Charge	\$8.12
Local Generation Charge	\$102.32
Reliability Services	\$.21
Other Charges & Credits (Electric)	
Public Purpose Programs	\$293.93
DWR Bond Charge	\$102.32
DWR Revenue Adjustment	-.61
Other	\$16.58
Total Current Charges	\$6,411.52

Your Electricity Dashboard

*Charts may not display if usage data is unavailable

Average Hourly Electric Usage



⚡ For each day in the billing cycle, an hourly usage is calculated by peak. At the end of the bill cycle, hourly usage is averaged and displayed on the chart by peak.

Highest Usage Hour

Highest Usage Hour (Demand) this month:

⚡ **235.2 kW on January 26, 2019 from 6:00am to 7:00am**

Demand is the highest amount of electricity used at a given point in time.

Time of Use - Electricity

Winter	kWh	Nov 1 - Feb 28
On-Peak	1,506	4pm-9pm Daily
Off-Peak	6,963	6am-4pm & 9pm-12am M-F, 2pm-4pm & 9pm-12am Weekends/Holidays
Super Off	11,872	12am-6am M-F, 12am-2pm Weekends/Holidays
Total	20,341	

Definitions

California Climate Credit - Part of California's efforts to fight climate change, the credit results from fees charged by the state to reduce carbon pollution and increase use of cleaner forms of energy. These fees are returned to customers as savings on their electric bill. Households will receive the credit twice a year, and small businesses will receive it monthly. Learn how you can use these savings to further reduce your energy costs and help fight climate change at EnergyUpgradeCA.org/credit.

City of San Diego Franchise Fee Differential - A fee charged to SDG&E by the City of San Diego for the rights to operate within city streets.

Climate Zone - The CPUC established four Climatic Zones in California, based on annual average temperatures.

Competition Transition Charge (CTC) - Through this charge, SDG&E recovers costs for power plants and long-term power contracts approved by state regulators that have been made uneconomical by the shift to competition.

Delivery - Charges for the costs of owning, operating, and maintaining the transmission and distribution facilities to deliver power to customers.

Distribution - This line reflects charges to distribute power to customers. It includes power lines, poles, transformers, repair crews and emergency services.

DWR Charges - The Department of Water Resources (DWR) Bond Charge pays for bonds issued by DWR to cover the costs of purchasing power during the electricity crisis. All DWR charges, including the Cost Responsibility Surcharge component of DWR charges, are owned by DWR and not SDG&E. SDG&E collects charges for DWR as an agent of DWR.

Electricity Generation Charge - This charge is for the electricity you use and includes charges for the energy provided by both SDG&E and DWR. Electricity from DWR is owned by DWR, not SDG&E. If you purchase electricity from another supplier or buy electricity through SDG&E using hourly pricing, this charge appears only for informational purposes and will be offset by a credit.

Franchise Fees for Electric Energy Supplied by Others - This charge pays cities for the right to have transmission and distribution equipment (such as poles and wires) on city streets. This charge collects the franchise fee on the electricity purchased for you by DWR. The franchise fee on the electricity provided to you by SDG&E is included in the SDG&E Electricity Generation Charge.

kWh (kilowatt hour) - A common unit to measure electric energy consumption. A kWh equals 1,000 watts of electric power consumed for one hour of time.

Local Generation Charge - Recovers the costs associated with generation power suppliers that the CPUC has determined should be recovered from all benefiting customers.

Maximum Monthly Demand - The maximum demand during the current billing period.

Nuclear Decommissioning - This charge pays for the retirement of nuclear power plants.

Public Purpose Programs - This charge reflects the costs of certain state-mandated programs (such as low-income and energy efficiency programs).

Reliability Services (RS) - The Independent System Operator is required to ensure adequate generation to maintain electric system reliability. This means having enough generating facilities available to meet the demand for electricity at all times. The costs associated with this are passed on to SDG&E customers.

State Regulatory Fee - Charged to all utility users to pay for the California Public Utilities Commission (CPUC) operations.

State Surcharge Tax - Collected by the State of California for the conservation and development of energy resources in the state.

Total Rate Adjustment Component (TRAC) - This legislated charge is a conservation incentive. Customers with usage of less than 130% of baseline receive a subsidy credit. Customers with usage over 130% of baseline make up the difference and cover the cost of the subsidy.

Transmission - This charge pays for the delivery of high-voltage electricity from power plants to distribution points near your home or business. It includes the cost of high-voltage power lines and towers, as well as monitoring and control equipment.

SDG&E Policies and Notices

Electronic Check Processing - When you pay your bill by check, you authorize us to electronically process your payment. If your check is processed electronically, your checking account may be debited on the same day we receive the check. Your check will not be returned by your bank, however, the transaction will appear on your bank statement. *If you do not wish to participate in this program, please have your account number ready and call 1-866-534-5152.*

Rates & Rules - SDG&E's rate schedules and rules, on file and approved by the CPUC, are available on the Internet at www.sdge.com. Copies of applicable tariffs may also be obtained by calling 1-800-411-SDGE (7343) or visiting any company bill payment office.

Pay Before Date / Disconnection Policy - Your SDG&E bill is due and payable upon presentation and is past due if not paid within 15 days of the date mailed. If your payment has not been received by the "Due Date" shown on your bill, your SDG&E service is subject to disconnection, after proper notice has been provided. If your service is disconnected for non-payment, there may be additional service charges and you will be required to pay all past due SDG&E amounts before service is restored. Your SDG&E service could also be disconnected if the information provided on your application for service is false, incomplete or inaccurate. SDG&E will disconnect your services only for non-payment of those charges owed SDG&E.

If you are unable to pay your SDG&E bill in full due to a temporary financial hardship or due to a serious illness in the household, you need to call SDG&E before the expiration of

this notice. Employees, including multilingual staff, are available to assist with payment arrangements.

If SDG&E fails to offer you payment arrangements, you may write to the Consumer Affairs Branch of the California Public Utilities Commission (CPUC), State Office Building, 505 Van Ness Avenue, Room 2003, San Francisco, CA 94102, phone: 800-649-7570, email: consumer-affairs@cpuc.ca.gov, prior to disconnection of your SDG&E service. The Consumer Affairs Branch will review the complaint and issue its proposed resolution to you and SDG&E. If you are not satisfied, you may appeal the proposed resolution by filing a formal complaint. A more detailed explanation of disconnection policies, including your rights as an SDG&E customer, may be obtained by calling 1-800-411-SDGE (7343), or e-mail: info@sdge.com.

Disputed Bills / Service Complaints - If you believe there is an error on your bill or have a question about your service, please call SDG&E customer support at 1-800-411-SDGE (7343). If you are not satisfied with SDG&E's response, submit a complaint to the California Public Utilities Commission (CPUC) at www.cpuc.ca.gov/complaints/. Billing and service complaints are handled by the CPUC's Consumer Affairs Branch (CAB), 505 Van Ness Ave, Room 2003, San Francisco, CA 94102, phone: 1-800-649-7570.

If you have limitations hearing or speaking, dial 711 to reach the California Relay Service, which is for those needing assistance relaying telephone conversations. Dial one of the numbers below to be routed to a California Relay Service provider in your preferred mode of communication.

California Relay Service Phone Numbers:

Type of Call	Toll-Free Number
TTY/VCO/HCO to Voice	1-800-735-2929 English 1-800-855-3000 Spanish
Voice to TTY/VCO/HCO	1-800-735-2922 English 1-800-855-3000 Spanish
Speech to Speech	1-800-854-7784

To avoid having service turned off while waiting for the outcome of a complaint to the CPUC specifically regarding the accuracy of your bill, please contact CAB for assistance. If your case meets the eligibility criteria, CAB will provide you instructions on how to mail a check or money order to be impounded pending resolution of your case. You must continue to pay your current charges while your complaint is under review to keep your service turned on.

Re-Establishment of Credit / Deposit - If your SDG&E bill becomes past due and a written notice for disconnection is mailed, you may be required to re-establish your credit by paying a deposit.

Large Font Bill - You can sign-up to receive a large font bill by calling SDG&E at 1-800-411-SDGE (7343).



ACCOUNT NUMBER 1706 932 195 8
 SERVICE FOR
 VLY CENTER MUN WTR DIST
 29801 ANTHONY RD
 VALLEY CENTER, CA 92082

Sign up to go Paperless

Sign up to go Paperless today.
 Visit sdge.com/go-paperless-today.

Account Summary

Previous Balance			\$6,411.52
Payment Received	03/20/19	THANK YOU	- 6,411.52
Current Charges			+ 5,560.84
Total Amount Due			\$5,560.84

.7% Delayed Payment Charge Due If Paid After Apr 27, 2019.

Summary of Current Charges

(See page 2 for details)

	Billing Period	Usage	Amount(\$)
Electric	Feb 18, 2019 - Mar 19, 2019	10,195 kWh	5,560.84
Total Charges this Month			\$5,560.84

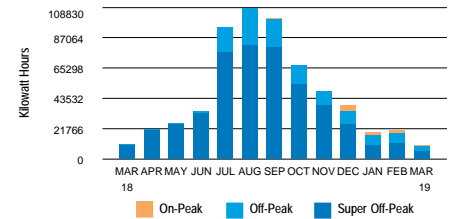
Time of Use Change This Bill Period:
 Time-of-use periods changed for March and April of 2019. See Time-of-use chart for details.

Regulatory Notices

- All customers are required to pay a Competition Transition Charge as part of the charges above, including those who choose an electric service provider other than SDG&E.

DATE DUE	Apr 17, 2019
AMOUNT DUE	\$5,560.84

Electric Usage History (Total kWh used)



10,195 kWh used

- 351.6 Daily avg kWh
- 635.7 Daily avg kWh last month
- 5.3% ↑ Change in daily avg kWh from last year
- 44.7% ↓ Change in daily avg kWh from last month
- 235.2 Max monthly demand
- 29 ↻ Days in billing cycle

PLEASE KEEP THIS PORTION FOR YOUR RECORDS. (FAVOR DE GUARDAR ESTA PARTE PARA SUS REGISTROS.)
 PLEASE RETURN THIS PORTION WITH YOUR PAYMENT. (FAVOR DE DEVOLVER ESTA PARTE CON SU PAGO.)



SERVICE ADDRESS: 29801 ANTHONY RD VC 92082

Save Paper & Postage
 PAY ONLINE
 sdge.com

ACCOUNT NUMBER
1706 932 195 8

DATE DUE	Apr 17, 2019
AMOUNT DUE	\$5,560.84

Please enter amount enclosed.

\$

Write account number on check and make payable to **San Diego Gas & Electric**.

VLY CENTER MUN WTR DIST
 MILLER PUMP STATION
 PO BOX 67
 VALLEY CENTER CA 92082-0067

SAN DIEGO GAS & ELECTRIC
 PO BOX 25111
 SANTA ANA CA 92799-5111



A Semptra Energy utility®

ACCOUNT NUMBER 1706 932 195 8

DATE DUE

Apr 17, 2019

DATE MAILED Apr 1, 2019

Page 2 of 5

sdge.com

Detail of Current Charges

Electric Service

Rate: Time of Use - PAT-1-Commercial Climate Zone: Inland
 Billing Period: 2/18/19 - 3/19/19 Total Days: 29
 Meter Number: 06700423 (Next scheduled read date Apr 19, 2019) Cycle: 13
 Meter Constant: 300.000 Billing Voltage Level: Secondary
 Circuit: 1022 Block: 153A
 Total Usage: 10,195 (Usage based on interval data)

ELECTRIC CHARGES

	Amount(\$)
Customer Charge	105.49
Electricity Delivery (Details below) 10,195 kWh	
<i>WINTER USAGE</i>	
<u>kWh used</u>	
On-Peak 1,201	3,352
Off-Peak 3,352	5,642
Super Off-Peak 5,642	
<u>Rate/kWh</u>	
On-Peak \$.00578	\$.00578
Off-Peak \$.00578	\$.00578
Super Off-Peak \$.00578	
<u>Charge</u>	
On-Peak \$6.94	+ \$19.38
Off-Peak + \$19.38	+ \$32.61
Super Off-Peak + \$32.61	= 58.93

Time of Use Change This Bill Period:
 There was a time of use change on day 11 of your Billing Period. Therefore, your consumption for the first 10 days were aggregated on TOU 1, and the remaining 19 days were aggregated on TOU 2. See time-of-use chart for detail.

Rate Change This Billing Period:
 There was a rate change on day 20 of your Billing Period. Therefore, your charges for the first 19 days were at Rate 1, and the remaining 10 days were at Rate 2.

Winter On-Peak Demand	231.6 kW x \$.00	.00
Winter Time Of Use Demand	234.0 kW x \$12.73	2,978.82
Winter Non-Coincident Demand	241.8 kW x \$6.90	1,668.42
DWR Bond Charge	10,195 kWh x \$.00503	51.28

(Continued on next page)

Important Phone Numbers

1-800-336-SDGE (7343) English
1-800-311-SDGE (7343) Español
1-877-889-SDGE (7343) TTY

M-F, 7am-8pm, Sat, 7am-6pm

For emergencies and to report outages, please call 24 hours a day, 7 days a week. **1-800-611-7343**

To locate underground cables & gas pipes, please call DigAlert, Monday-Friday, 6am-7pm. **8-1-1**

To make a payment using your credit or debit card via a third party vendor, call. **1-800-386-0067**

Payment Options \$ Please visit sdge.com/residential/pay-your-bill for more ways to pay your bill.



Online Bill Pay:

Register to make a secure payment now or schedule your payment at myaccount.sdge.com, or visit your bank's website for home banking options.



Credit/Debit:

Pay by credit/debit card via third party vendor (fee applies) by visiting sdge.com/residential/pay-your-bill. Click on the Bill Matrix link or call 1-800-386-0067 to make a payment.



Mobile:

SDG&E's free app for your mobile device gives you more ways to connect with us. Visit sdge.com/mobileapps to download.



In Person:

To find the nearest location and hours of operation, visit sdge.com/locations.



Need help paying your bill?

For payment options or to make payment arrangements, visit us at sdge.com/assistance or call 1-800-411-7343



By Mail:

Mail your check or money order, along with the payment stub at the bottom of your bill, in the enclosed envelope to SDG&E, PO Box 25111, Santa Ana, CA 92799-5111.

Detail of Current Charges - Continued

Electricity Generation (<i>Details below</i>)	10,195 kWh			
<i>WINTER USAGE</i>	On-Peak	Off-Peak	Super Off-Peak	
kWh used	1,201	3,352	5,642	
Rate/kWh	\$.08136	\$.07221	\$.06206	
Charge	\$97.71	+ \$242.05	+ \$350.14	= 689.90

DWR Revenue Adjustment		- .31
Winter Generation Demand	231.6 kW x \$.00	.00

Total Electric Charges \$5,552.53

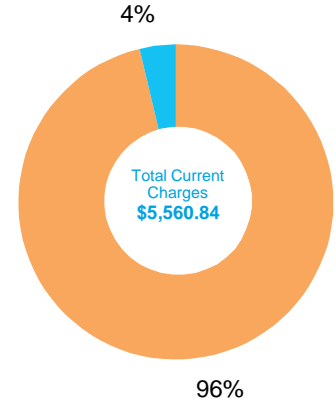
TAXES & FEES ON ELECTRIC CHARGES	Amount (\$)
Franchise Fees on Electric Energy Supplied by Others	50.97 x 1.10% .56
State Surcharge Tax	10,195 kWh x \$.000300 3.06
State Regulatory Fee	10,195 kWh x \$.000460 4.69

Total Taxes & Fees on Electric Charges \$8.31

Total Electric Service \$5,560.84

Total Current Charges \$5,560.84

Breakdown of Current Charges



The total current charges include the following components. Definitions for these terms are shown on page 5 of your bill.

Period: 02/18 - 03/19

🔌 Electric Charges

Electricity Generation	\$689.90
Transmission	\$1,518.96
Distribution	\$3,090.22
Nuclear Decommissioning	-.31
Competition Transition Charge	\$4.09
Local Generation Charge	\$51.28
Reliability Services	\$.10

⚡ Other Charges & Credits (Electric)

Public Purpose Programs	\$147.32
DWR Bond Charge	\$51.28
DWR Revenue Adjustment	-.31
Other	\$8.31

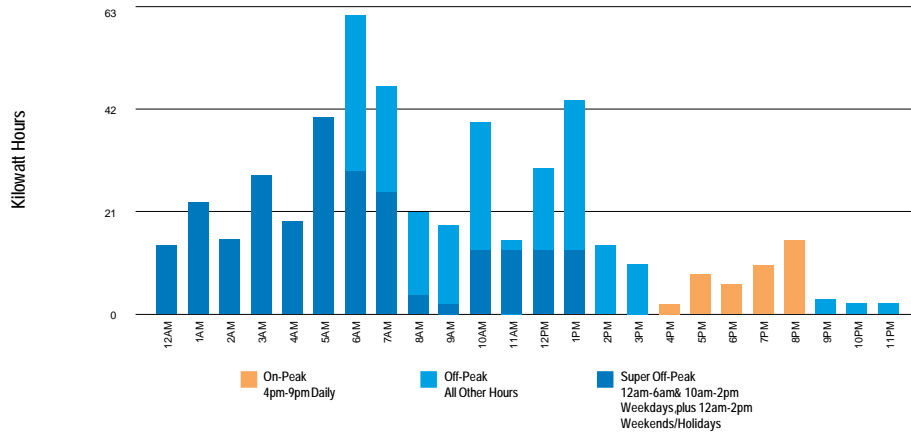
Total Current Charges \$5,560.84

Your Electricity Dashboard

*Charts may not display if usage data is unavailable

Period: 02/18 - 03/19

Average Hourly Electric Usage



⚡ For each day in the billing cycle, an hourly usage is calculated by peak. At the end of the bill cycle, hourly usage is averaged and displayed on the chart by peak.

Highest Usage Hour

Highest Usage Hour (Demand) this month:

⚡ **235.2 kW on March 16, 2019 from 1:00am to 2:00am**

Demand is the highest amount of electricity used at a given point in time.

Time of Use - Electricity

Winter	kWh	Nov 1 - Feb 28
On-Peak	995	4pm-9pm Daily
Off-Peak	2,058	6am-4pm & 9pm-12am M-F, 2pm-4pm & 9pm-12am Weekends/Holidays
Super Off	2,623	12am-6am M-F, 12am-2pm Weekends/Holidays
Total	5,676	

Winter	kWh	Mar 1 - Apr 30
On-Peak	206	4pm-9pm Daily
Off-Peak	1,294	All Other Hours
Super Off	3,019	12am-6am & 10am-2pm Weekdays plus 12am-2pm Weekends/Holidays
Total	4,519	



Definitions

California Climate Credit - Part of California's efforts to fight climate change, the credit results from fees charged by the state to reduce carbon pollution and increase use of cleaner forms of energy. These fees are returned to customers as savings on their electric bill. Households will receive the credit twice a year, and small businesses will receive it monthly. Learn how you can use these savings to further reduce your energy costs and help fight climate change at EnergyUpgradeCA.org/credit.

City of San Diego Franchise Fee Differential - A fee charged to SDG&E by the City of San Diego for the rights to operate within city streets.

Climate Zone - The CPUC established four Climatic Zones in California, based on annual average temperatures.

Competition Transition Charge (CTC) - Through this charge, SDG&E recovers costs for power plants and longterm power contracts approved by state regulators that have been made uneconomic by the shift to competition.

Delivery - Charges for the costs of owning, operating, and maintaining the transmission and distribution facilities to deliver power to customers.

Distribution - This line reflects charges to distribute power to customers. It includes power lines, poles, transformers, repair crews and emergency services.

DWR Charges - The Department of Water Resources (DWR) Bond Charge pays for bonds issued by DWR to cover the costs of purchasing power during the electricity crisis. All DWR charges, including the Cost Responsibility Surcharge component of DWR charges, are owned by DWR and not SDG&E. SDG&E collects charges for DWR as an agent of DWR.

Electricity Generation Charge - This charge is for the electricity you use and includes charges for the energy provided by both SDG&E and DWR. Electricity from DWR is owned by DWR, not SDG&E. If you purchase electricity from another supplier or buy electricity through SDG&E using hourly pricing, this charge appears only for informational purposes and will be offset by a credit.

Franchise Fees for Electric Energy Supplied by Others - This charge pays cities for the right to have transmission and distribution equipment (such as poles and wires) on city streets. This charge collects the franchise fee on the electricity purchased for you by DWR. The franchise fee on the electricity provided to you by SDG&E is included in the SDG&E Electricity Generation Charge.

kWh (kilowatt hour) - A common unit to measure electric energy consumption. A kWh equals 1,000 watts of electric power consumed for one hour of time.

Local Generation Charge - Recovers the costs associated with generation power suppliers that the CPUC has determined should be recovered from all benefiting customers.

Maximum Monthly Demand - The maximum demand during the current billing period.

Nuclear Decommissioning - This charge pays for the retirement of nuclear power plants.

Public Purpose Programs - This charge reflects the costs of certain state-mandated programs (such as low-income and energy efficiency programs).

Reliability Services (RS) - The Independent System Operator is required to ensure adequate generation to maintain electric system reliability. This means having enough generating facilities available to meet the demand for electricity at all times. The costs associated with this are passed on to SDG&E customers.

State Regulatory Fee - Charged to all utility users to pay for the California Public Utilities Commission (CPUC) operations.

State Surcharge Tax - Collected by the State of California for the conservation and development of energy resources in the state.

Total Rate Adjustment Component (TRAC) - This legislated charge is a conservation incentive. Customers with usage of less than 130% of baseline receive a subsidy credit. Customers with usage over 130% of baseline make up the difference and cover the cost of the subsidy.

Transmission - This charge pays for the delivery of high-voltage electricity from power plants to distribution points near your home or business. It includes the cost of high-voltage power lines and towers, as well as monitoring and control equipment.

SDG&E Policies and Notices

Electronic Check Processing - When you pay your bill by check, you authorize us to electronically process your payment. If your check is processed electronically, your checking account may be debited on the same day we receive the check. Your check will not be returned by your bank, however, the transaction will appear on your bank statement. If you do not wish to participate in this program, please have your account number ready and call 1-866-534-5152.

Rates & Rules - SDG&E's rate schedules and rules, on file and approved by the CPUC, are available on the Internet at www.sdge.com. Copies of applicable tariffs may also be obtained by calling 1-800-411-SDGE (7343) or visiting any company bill payment office.

Pay Before Date / Disconnection Policy - Your SDG&E bill is due and payable upon presentation and is past due if not paid within 15 days of the date mailed. If your payment has not been received by the "Due Date" shown on your bill, your SDG&E service is subject to disconnection, after proper notice has been provided. If your service is disconnected for non-payment, there may be additional service charges and you will be required to pay all past due SDG&E amounts before service is restored. Your SDG&E service could also be disconnected if the information provided on your application for service is false, incomplete or inaccurate. SDG&E will disconnect your services only for non-payment of those charges owed SDG&E.

If you are unable to pay your SDG&E bill in full due to a temporary financial hardship or due to a serious illness in the household, you need to call SDG&E before the expiration of

this notice. Employees, including multilingual staff, are available to assist with payment arrangements.

If SDG&E fails to offer you payment arrangements, you may write to the Consumer Affairs Branch of the California Public Utilities Commission (CPUC), State Office Building, 505 Van Ness Avenue, Room 2003, San Francisco, CA 94102, phone: 800-649-7570, email: consumer-affairs@cpuc.ca.gov, prior to disconnection of your SDG&E service. The Consumer Affairs Branch will review the complaint and issue its proposed resolution to you and SDG&E. If you are not satisfied, you may appeal the proposed resolution by filing a formal complaint. A more detailed explanation of disconnection policies, including your rights as an SDG&E customer, may be obtained by calling 1-800-411-SDGE (7343), or e-mail: info@sdge.com.

Disputed Bills / Service Complaints - If you believe there is an error on your bill or have a question about your service, please call SDG&E customer support at 1-800-411-SDGE (7343). If you are not satisfied with SDG&E's response, submit a complaint to the California Public Utilities Commission (CPUC) at www.cpuc.ca.gov/complaints/. Billing and service complaints are handled by the CPUC's Consumer Affairs Branch (CAB), 505 Van Ness Ave, Room 2003, San Francisco, CA 94102, phone: 1-800-649-7570.

If you have limitations hearing or speaking, dial 711 to reach the California Relay Service, which is for those needing assistance relaying telephone conversations. Dial one of the numbers below to be routed to a California Relay Service provider in your preferred mode of communication.

California Relay Service Phone Numbers:

Table with 2 columns: Type of Call, Toll-Free Number. Rows include TTY/VCO/HCO to Voice, Voice to TTY/VCO/HCO, and Speech to Speech.

To avoid having service turned off while waiting for the outcome of a complaint to the CPUC specifically regarding the accuracy of your bill, please contact CAB for assistance. If your case meets the eligibility criteria, CAB will provide you instructions on how to mail a check or money order to be impounded pending resolution of your case. You must continue to pay your current charges while your complaint is under review to keep your service turned on.

Re-Establishment of Credit / Deposit - If your SDG&E bill becomes past due and a written notice for disconnection is mailed, you may be required to re-establish your credit by paying a deposit.

Large Font Bill - You can sign-up to receive a large font bill by calling SDG&E at 1-800-411-SDGE (7343).



ACCOUNT NUMBER 1706 932 195 8
 SERVICE FOR
 VLY CENTER MUN WTR DIST
 29801 ANTHONY RD
 VALLEY CENTER, CA 92082

DATE MAILED May 1, 2019 Page 1 of 5
 sdge.com

Sign up to go Paperless

Sign up to go Paperless today.
 Visit sdge.com/go-paperless-today.

Account Summary

Previous Balance			\$5,560.84
Payment Received	04/16/19	THANK YOU	- 5,560.84
Current Charges			+ 9,661.01
Total Amount Due			\$9,661.01

.7% Delayed Payment Charge Due If Paid After May 27, 2019.

Summary of Current Charges

(See page 2 for details)

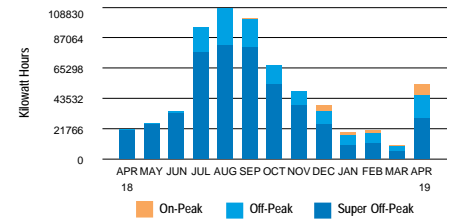
	Billing Period	Usage	Amount(\$)
Electric	Mar 19, 2019 - Apr 18, 2019	53,935 kWh	9,661.01
Total Charges this Month			\$9,661.01

Regulatory Notices

All customers are required to pay a Competition Transition Charge as part of the charges above, including those who choose an electric service provider other than SDG&E.

DATE DUE	May 17, 2019
AMOUNT DUE	\$9,661.01

Electric Usage History (Total kWh used)



53,935 kWh used

- 1,797.8 Daily avg kWh
- 351.6 Daily avg kWh last month
- 150.6% ↑ Change in daily avg kWh from last year
- 411.3% ↑ Change in daily avg kWh from last month
- 478.8 Max monthly demand
- 483.6 Max annual demand
- 30 ↻ Days in billing cycle

PLEASE KEEP THIS PORTION FOR YOUR RECORDS. (FAVOR DE GUARDAR ESTA PARTE PARA SUS REGISTROS.)
 PLEASE RETURN THIS PORTION WITH YOUR PAYMENT. (FAVOR DE DEVOLVER ESTA PARTE CON SU PAGO.)



SERVICE ADDRESS: 29801 ANTHONY RD VC 92082

Save Paper & Postage
 PAY ONLINE
 sdge.com

ACCOUNT NUMBER
 1706 932 195 8

DATE DUE	May 17, 2019
AMOUNT DUE	\$9,661.01

Please enter amount enclosed.

\$

Write account number on check and make payable to **San Diego Gas & Electric**.

VLY CENTER MUN WTR DIST
 MILLER PUMP STATION
 PO BOX 67
 VALLEY CENTER CA 92082-0067

SAN DIEGO GAS & ELECTRIC
 PO BOX 25111
 SANTA ANA CA 92799-5111

8 2 8000170693219500009661010000966101



Detail of Current Charges

Electric Service

Rate: Time of Use - TOU-PA2-Commercial Climate Zone: Inland
 Billing Period: 3/19/19 - 4/18/19 Total Days: 30
 Meter Number: 06700423 (Next scheduled read date May 20, 2019) Cycle: 13
 Meter Constant: 300.000 Billing Voltage Level: Secondary
 Circuit: 1022 Block: 153A
 Total Usage: 53,935 (Usage based on interval data)

ELECTRIC CHARGES

Customer Charge				Amount(\$)	
				287.15	
Electricity Delivery (Details below)	53,935 kWh				
<i>WINTER USAGE</i>	On-Peak	Off-Peak	Super Off-Peak		
kWh used	8,553	15,911	29,471		
Rate/kWh	\$.03471	\$.03471	\$.03471		
Charge	\$296.87	+ \$552.27	+ \$1,022.94	=	1,872.08
Winter Time Of Use Demand	477.6 kW x \$8.15				3,892.44
DWR Bond Charge	53,935 kWh x \$.00503				271.29
Electricity Generation (Details below)	53,935 kWh				
<i>WINTER USAGE</i>	On-Peak	Off-Peak	Super Off-Peak		
kWh used	8,553	15,911	29,471		
Rate/kWh	\$.07290	\$.06470	\$.05561		
Charge	\$623.51	+ \$1,029.44	+ \$1,638.88	=	3,291.83
DWR Revenue Adjustment					-1.62
Winter Generation Demand	477.6 kW x \$.00				.00

Total Electric Charges \$9,613.17

(Continued on next page)

Important Phone Numbers

1-800-336-SDGE (7343) English
1-800-311-SDGE (7343) Español
1-877-889-SDGE (7343) TTY

M-F, 7am-8pm, Sat, 7am-6pm

For emergencies and to report outages, please call 24 hours a day, 7 days a week. **1-800-611-7343**

To locate underground cables & gas pipes, please call DigAlert, Monday-Friday, 6am-7pm. **8-1-1**

To make a payment using your credit or debit card via a third party vendor, call. **1-800-386-0067**

Payment Options \$ Please visit sdge.com/residential/pay-your-bill for more ways to pay your bill.



Online Bill Pay:

Register to make a secure payment now or schedule your payment at myaccount.sdge.com, or visit your bank's website for home banking options.



Credit/Debit:

Pay by credit/debit card via third party vendor (fee applies) by visiting sdge.com/residential/pay-your-bill. Click on the Bill Matrix link or call 1-800-386-0067 to make a payment.



Mobile:

SDG&E's free app for your mobile device gives you more ways to connect with us. Visit sdge.com/mobileapps to download.



In Person:

To find the nearest location and hours of operation, visit sdge.com/locations.



Need help paying your bill?

For payment options or to make payment arrangements, visit us at sdge.com/assistance or call 1-800-411-7343



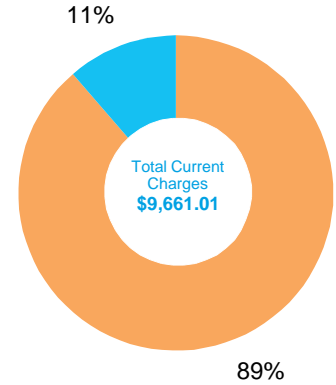
By Mail:

Mail your check or money order, along with the payment stub at the bottom of your bill, in the enclosed envelope to SDG&E, PO Box 25111, Santa Ana, CA 92799-5111.

Detail of Current Charges - Continued

TAXES & FEES ON ELECTRIC CHARGES		Amount (\$)
Franchise Fees on Electric Energy Supplied by Others	269.67 x 1.10%	2.97
State Surcharge Tax	53,935 kWh x \$.000300	16.18
State Regulatory Fee		28.69
Total Taxes & Fees on Electric Charges		\$47.84
Total Electric Service		\$9,661.01
Total Current Charges		\$9,661.01

Breakdown of Current Charges



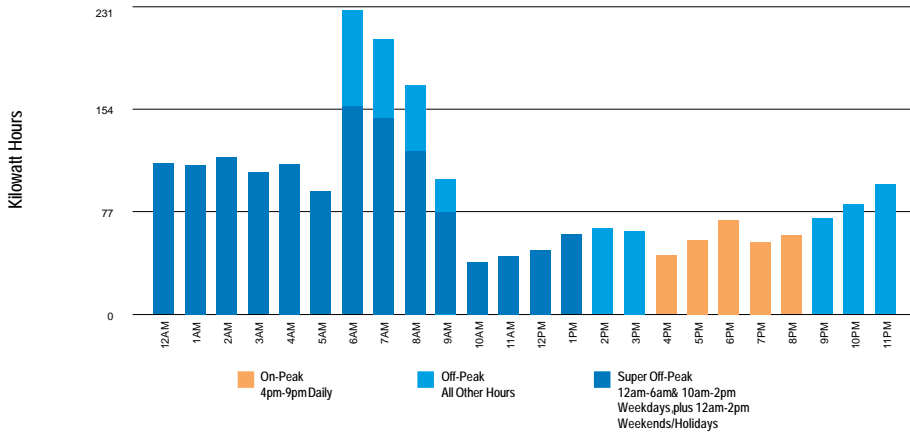
The total current charges include the following components. Definitions for these terms are shown on page 5 of your bill.

Electric Charges	
Electricity Generation	\$3,291.83
Transmission	\$751.86
Distribution	\$4,228.67
Nuclear Decommissioning	-\$1.62
Competition Transition Charge	\$21.57
Local Generation Charge	\$271.29
Reliability Services	\$.54
Other Charges & Credits (Electric)	
Public Purpose Programs	\$779.36
DWR Bond Charge	\$271.29
DWR Revenue Adjustment	-\$1.62
Other	\$47.84
Total Current Charges	\$9,661.01

Your Electricity Dashboard

*Charts may not display if usage data is unavailable

Average Hourly Electric Usage



⚡ For each day in the billing cycle, an hourly usage is calculated by peak. At the end of the bill cycle, hourly usage is averaged and displayed on the chart by peak.

Highest Usage Hour

⚡ Highest Usage Hour (Demand) this month:
478.8 kW on April 14, 2019 from 7:00am to 8:00am
 Demand is the highest amount of electricity used at a given point in time.

Time of Use - Electricity

Winter	kWh	Mar 1 - Apr 30
On-Peak	8,553	4pm-9pm Daily
Off-Peak	15,911	All Other Hours
Super Off	29,471	12am-6am & 10am-2pm Weekdays plus 12am-2pm Weekends/Holidays
Total	53,935	



Definitions

California Climate Credit - The state charges fees to reduce carbon pollution and increase the use of cleaner energy. These fees are returned to you as a credit. Households receive the electric credit twice a year and gas credit once a year. Small businesses receive the electric credit monthly. Visit EnergyUpgradeCA.org/credit to learn more.

City of San Diego Franchise Fee Differential - A fee charged to SDG&E by the City of San Diego for the rights to operate within city streets.

Climate Zone - The CPUC established four Climatic Zones in California, based on annual average temperatures.

Competition Transition Charge (CTC) - Through this charge, SDG&E recovers costs for power plants and longterm power contracts approved by state regulators that have been made uneconomic by the shift to competition.

Delivery - Charges for the costs of owning, operating, and maintaining the transmission and distribution facilities to deliver power to customers.

Distribution - This line reflects charges to distribute power to customers. It includes power lines, poles, transformers, repair crews and emergency services.

DWR Charges - The Department of Water Resources (DWR) Bond Charge pays for bonds issued by DWR to cover the costs of purchasing power during the electricity crisis. All DWR charges, including the Cost Responsibility Surcharge component of DWR charges, are owned by DWR and not SDG&E. SDG&E collects charges for DWR as an agent of DWR.

Electricity Generation Charge - This charge is for the electricity you use and includes charges for the energy provided by both SDG&E and DWR. Electricity from DWR is owned by DWR, not SDG&E. If you purchase electricity from another supplier or buy electricity through SDG&E using hourly pricing, this charge appears only for informational purposes and will be offset by a credit.

Franchise Fees for Electric Energy Supplied by Others - This charge pays cities for the right to have transmission and distribution equipment (such as poles and wires) on city streets. This charge collects the franchise fee on the electricity purchased for you by DWR. The franchise fee on the electricity provided to you by SDG&E is included in the SDG&E Electricity Generation Charge.

kWh (kilowatt hour) - A common unit to measure electric energy consumption. A kWh equals 1,000 watts of electric power consumed for one hour of time.

Local Generation Charge - Recovers the costs associated with generation power suppliers that the CPUC has determined should be recovered from all benefiting customers.

Maximum Annual Demand - The highest Maximum Monthly Demand for the current and prior eleven billing periods.

Maximum Monthly Demand - The maximum demand during the current billing period.

Nuclear Decommissioning - This charge pays for the retirement of nuclear power plants.

Public Purpose Programs - This charge reflects the costs of certain state-mandated programs (such as low-income and energy efficiency programs).

Reliability Services (RS) - The Independent System Operator is required to ensure adequate generation to maintain electric system reliability. This means having enough generating facilities available to meet the demand for electricity at all times. The costs associated with this are passed on to SDG&E customers.

State Regulatory Fee - Charged to all utility users to pay for the California Public Utilities Commission (CPUC) operations.

State Surcharge Tax - Collected by the State of California for the conservation and development of energy resources in the state.

Total Rate Adjustment Component (TRAC) - This legislated charge is a conservation incentive. Customers with usage of less than 130% of baseline receive a subsidy credit. Customers with usage over 130% of baseline make up the difference and cover the cost of the subsidy.

Transmission - This charge pays for the delivery of high-voltage electricity from power plants to distribution points near your home or business. It includes the cost of high-voltage power lines and towers, as well as monitoring and control equipment.

SDG&E Policies and Notices

Electronic Check Processing - When you pay your bill by check, you authorize us to electronically process your payment. If your check is processed electronically, your checking account may be debited on the same day we receive the check. Your check will not be returned by your bank, however, the transaction will appear on your bank statement. If you do not wish to participate in this program, please have your account number ready and call 1-866-534-5152.

Rates & Rules - SDG&E's rate schedules and rules, on file and approved by the CPUC, are available on the Internet at www.sdge.com. Copies of applicable tariffs may also be obtained by calling 1-800-411-SDGE (7343) or visiting any company bill payment office.

Pay Before Date / Disconnection Policy - Your SDG&E bill is due and payable upon presentation and is past due if not paid within 15 days of the date mailed. If your payment has not been received by the "Due Date" shown on your bill, your SDG&E service is subject to disconnection, after proper notice has been provided. If your service is disconnected for non-payment, there may be additional service charges and you will be required to pay all past due SDG&E amounts before service is restored. Your SDG&E service could also be disconnected if the information provided on your application for service is false, incomplete or inaccurate. SDG&E will disconnect your services only for non-payment of those charges owed SDG&E.

If you are unable to pay your SDG&E bill in full due to a temporary financial hardship or due to a serious illness in the household, you need to call SDG&E before the expiration of

this notice. Employees, including multilingual staff, are available to assist with payment arrangements.

If SDG&E fails to offer you payment arrangements, you may write to the Consumer Affairs Branch of the California Public Utilities Commission (CPUC), State Office Building, 505 Van Ness Avenue, Room 2003, San Francisco, CA 94102, phone: 800-649-7570, email: consumer-affairs@cpuc.ca.gov, prior to disconnection of your SDG&E service. The Consumer Affairs Branch will review the complaint and issue its proposed resolution to you and SDG&E. If you are not satisfied, you may appeal the proposed resolution by filing a formal complaint. A more detailed explanation of disconnection policies, including your rights as an SDG&E customer, may be obtained by calling 1-800-411-SDGE (7343), or e-mail: info@sdge.com.

Disputed Bills / Service Complaints - If you believe there is an error on your bill or have a question about your service, please call SDG&E customer support at 1-800-411-SDGE (7343). If you are not satisfied with SDG&E's response, submit a complaint to the California Public Utilities Commission (CPUC) at www.cpuc.ca.gov/complaints/. Billing and service complaints are handled by the CPUC's Consumer Affairs Branch (CAB), 505 Van Ness Ave, Room 2003, San Francisco, CA 94102, phone: 1-800-649-7570.

If you have limitations hearing or speaking, dial 711 to reach the California Relay Service, which is for those needing assistance relaying telephone conversations. Dial one of the numbers below to be routed to a California Relay Service provider in your preferred mode of communication.

California Relay Service Phone Numbers:

Table with 2 columns: Type of Call, Toll-Free Number. Rows include TTY/VCO/HCO to Voice, Voice to TTY/VCO/HCO, and Speech to Speech.

To avoid having service turned off while waiting for the outcome of a complaint to the CPUC specifically regarding the accuracy of your bill, please contact CAB for assistance. If your case meets the eligibility criteria, CAB will provide you instructions on how to mail a check or money order to be impounded pending resolution of your case. You must continue to pay your current charges while your complaint is under review to keep your service turned on.

Re-Establishment of Credit / Deposit - If your SDG&E bill becomes past due and a written notice for disconnection is mailed, you may be required to re-establish your credit by paying a deposit.

Large Font Bill - You can sign-up to receive a large font bill by calling SDG&E at 1-800-411-SDGE (7343).



ACCOUNT NUMBER 1706 932 195 8
 SERVICE FOR
 VLY CENTER MUN WTR DIST
 29801 ANTHONY RD
 VALLEY CENTER, CA 92082

Sign up to go Paperless



Sign up to go Paperless today.
 Visit sdge.com/go-paperless-today.

You may have rate options. Please call us at 1-800-336-7343(SDGE) or visit our website at sdge.com.

Account Summary

Previous Balance			\$9,661.01
Payment Received	05/14/19	THANK YOU	- 9,661.01
Current Charges			+ 16,222.83
Total Amount Due			\$16,222.83

.7% Delayed Payment Charge Due If Paid After Jun 28, 2019.

Summary of Current Charges

(See page 2 for details)

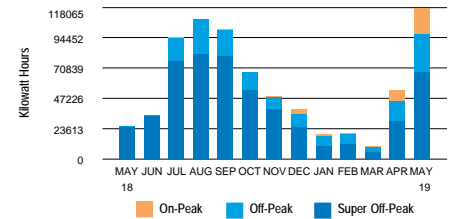
	Billing Period	Usage	Amount(\$)
Electric	Apr 18, 2019 - May 19, 2019	118,061 kWh	16,222.83
Total Charges this Month			\$16,222.83

Regulatory Notices

- All customers are required to pay a Competition Transition Charge as part of the charges above, including those who choose an electric service provider other than SDG&E.

DATE DUE	Jun 18, 2019
AMOUNT DUE	\$16,222.83

Electric Usage History (Total kWh used)



118,061 kWh used

- 3,808.4 Daily avg kWh
- 1,797.8 Daily avg kWh last month
- 332.0% ↑ Change in daily avg kWh from last year
- 111.8% ↑ Change in daily avg kWh from last month
- 483.6 Max monthly demand
- 483.6 Max annual demand
- 31 ↻ Days in billing cycle

PLEASE KEEP THIS PORTION FOR YOUR RECORDS. (FAVOR DE GUARDAR ESTA PARTE PARA SUS REGISTROS.)
 PLEASE RETURN THIS PORTION WITH YOUR PAYMENT. (FAVOR DE DEVOLVER ESTA PARTE CON SU PAGO.)



SERVICE ADDRESS: 29801 ANTHONY RD VC 92082

Save Paper & Postage
 PAY ONLINE
sdge.com

ACCOUNT NUMBER
1706 932 195 8

DATE DUE	Jun 18, 2019
AMOUNT DUE	\$16,222.83

Please enter amount enclosed.

\$

Write account number on check and make payable to **San Diego Gas & Electric**.

VLY CENTER MUN WTR DIST
 MILLER PUMP STATION
 PO BOX 67
 VALLEY CENTER CA 92082-0067

SAN DIEGO GAS & ELECTRIC
 PO BOX 25111
 SANTA ANA CA 92799-5111



Detail of Current Charges

Electric Service

Rate: Time of Use - TOU-PA2-Commercial Climate Zone: Inland
 Billing Period: 4/18/19 - 5/19/19 Total Days: 31
 Meter Number: 06700423 (Next scheduled read date Jun 19, 2019) Cycle: 13
 Meter Constant: 300.000 Billing Voltage Level: Secondary
 Circuit: 1022 Block: 153A
 Total Usage: 118,061 (Usage based on interval data)

ELECTRIC CHARGES

Customer Charge	Amount(\$) 287.15
------------------------	-----------------------------

Electricity Delivery (Details below)		118,061 kWh
WINTER USAGE	On-Peak	Off-Peak
kWh used	21,189	29,043
Rate/kWh	\$.03471	\$.03471
Charge	\$735.47	+ \$1,008.08
		+ \$2,354.35
		= 4,097.90

Rate Change This Billing Period:
 There was a rate change on day 20 of your Billing Period. Therefore, your charges for the first 19 days were at Rate 1, and the remaining 12 days were at Rate 2.

Winter Time Of Use Demand	483.6 kW x \$8.15	3,941.34
DWR Bond Charge	118,061 kWh x \$.00503	593.84

Electricity Generation (Details below)		118,061 kWh
WINTER USAGE	On-Peak	Off-Peak
kWh used	21,189	29,043
Rate/kWh	\$.07290	\$.05561
Charge	\$1,544.68	+ \$1,879.08
		+ \$3,771.98
		= 7,195.74

DWR Revenue Adjustment	-3.54
Winter Generation Demand	478.8 kW x \$.00
	.00

Total Electric Charges \$16,112.43

(Continued on next page)

Important Phone Numbers

1-800-336-SDGE (7343) English
1-800-311-SDGE (7343) Español
1-877-889-SDGE (7343) TTY

M-F, 7am-8pm, Sat, 7am-6pm

For emergencies and to report outages, please call 24 hours a day, 7 days a week. **1-800-611-7343**

To locate underground cables & gas pipes, please call DigAlert, Monday-Friday, 6am-7pm. **8-1-1**

To make a payment using your credit or debit card via a third party vendor, call. **1-800-386-0067**

Payment Options \$ Please visit sdge.com/residential/pay-your-bill for more ways to pay your bill.



Online Bill Pay:
 Register to make a secure payment now or schedule your payment at myaccount.sdge.com, or visit your bank's website for home banking options.



Credit/Debit:
 Pay by credit/debit card via third party vendor (fee applies) by visiting sdge.com/residential/pay-your-bill. Click on the Bill Matrix link or call 1-800-386-0067 to make a payment.



Mobile:
 SDG&E's free app for your mobile device gives you more ways to connect with us. Visit sdge.com/mobileapps to download.



In Person:
 To find the nearest location and hours of operation, visit sdge.com/locations.



Need help paying your bill?
 For payment options or to make payment arrangements, visit us at sdge.com/assistance or call 1-800-411-7343

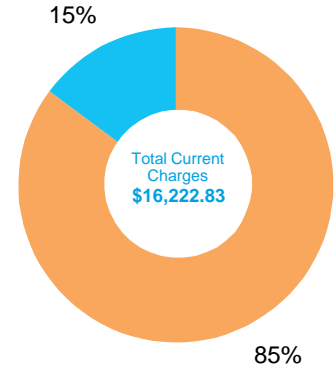


By Mail:
 Mail your check or money order, along with the payment stub at the bottom of your bill, in the enclosed envelope to SDG&E, PO Box 25111, Santa Ana, CA 92799-5111.

Detail of Current Charges - Continued

TAXES & FEES ON ELECTRIC CHARGES		Amount (\$)
Franchise Fees on Electric Energy Supplied by Others	590.30 x 1.10%	6.50
State Surcharge Tax	118,061 kWh x \$.000300	35.42
State Regulatory Fee	118,061 kWh x \$.000580	68.48
Total Taxes & Fees on Electric Charges		\$110.40
Total Electric Service		\$16,222.83
Total Current Charges		\$16,222.83

Breakdown of Current Charges



The total current charges include the following components. Definitions for these terms are shown on page 5 of your bill.

Period: 04/18 - 05/19

 **Electric Charges**

Electricity Generation	\$7,195.74
Transmission	\$1,645.78
Distribution	\$4,335.91
Nuclear Decommissioning	-\$3.54
Competition Transition Charge	\$47.24
Local Generation Charge	\$593.84
Reliability Services	\$1.18

 **Other Charges & Credits (Electric)**

Public Purpose Programs	\$1,705.98
DWR Bond Charge	\$593.84
DWR Revenue Adjustment	-\$3.54
Other	\$110.40

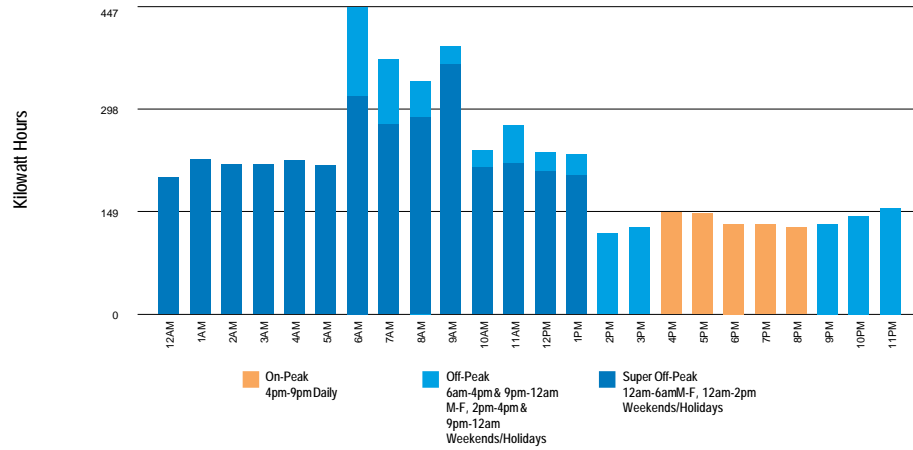
Total Current Charges \$16,222.83

Your Electricity Dashboard

*Charts may not display if usage data is unavailable

Period: 04/18 - 05/19

Average Hourly Electric Usage



⚡ For each day in the billing cycle, an hourly usage is calculated by peak. At the end of the bill cycle, hourly usage is averaged and displayed on the chart by peak.

Highest Usage Hour

Highest Usage Hour (Demand) this month:

⚡ **483.6 kW on May 03, 2019 from 10:00pm to 11:00pm**

Demand is the highest amount of electricity used at a given point in time.

Time of Use - Electricity

Winter	kWh	May 1 - May 31
On-Peak	21,189	4pm-9pm Daily
Off-Peak	29,043	6am-4pm & 9pm-12am M-F, 2pm-4pm & 9pm-12am Weekends/Holidays
Super Off	67,829	12am-6am M-F, 12am-2pm Weekends/Holidays
Total	118,061	



Definitions

California Climate Credit - The state charges fees to reduce carbon pollution and increase the use of cleaner energy. These fees are returned to you as a credit. Households receive the electric credit twice a year and gas credit once a year. Small businesses receive the electric credit monthly. Visit EnergyUpgradeCA.org/credit to learn more.

City of San Diego Franchise Fee Differential - A fee charged to SDG&E by the City of San Diego for the rights to operate within city streets.

Climate Zone - The CPUC established four Climatic Zones in California, based on annual average temperatures.

Competition Transition Charge (CTC) - Through this charge, SDG&E recovers costs for power plants and longterm power contracts approved by state regulators that have been made uneconomic by the shift to competition.

Delivery - Charges for the costs of owning, operating, and maintaining the transmission and distribution facilities to deliver power to customers.

Distribution - This line reflects charges to distribute power to customers. It includes power lines, poles, transformers, repair crews and emergency services.

DWR Charges - The Department of Water Resources (DWR) Bond Charge pays for bonds issued by DWR to cover the costs of purchasing power during the electricity crisis. All DWR charges, including the Cost Responsibility Surcharge component of DWR charges, are owned by DWR and not SDG&E. SDG&E collects charges for DWR as an agent of DWR.

Electricity Generation Charge - This charge is for the electricity you use and includes charges for the energy provided by both SDG&E and DWR. Electricity from DWR is owned by DWR, not SDG&E. If you purchase electricity from another supplier or buy electricity through SDG&E using hourly pricing, this charge appears only for informational purposes and will be offset by a credit.

Franchise Fees for Electric Energy Supplied by Others - This charge pays cities for the right to have transmission and distribution equipment (such as poles and wires) on city streets. This charge collects the franchise fee on the electricity purchased for you by DWR. The franchise fee on the electricity provided to you by SDG&E is included in the SDG&E Electricity Generation Charge.

kWh (kilowatt hour) - A common unit to measure electric energy consumption. A kWh equals 1,000 watts of electric power consumed for one hour of time.

Local Generation Charge - Recovers the costs associated with generation power suppliers that the CPUC has determined should be recovered from all benefiting customers.

Maximum Annual Demand - The highest Maximum Monthly Demand for the current and prior eleven billing periods.

Maximum Monthly Demand - The maximum demand during the current billing period.

Nuclear Decommissioning - This charge pays for the retirement of nuclear power plants.

Public Purpose Programs - This charge reflects the costs of certain state-mandated programs (such as low-income and energy efficiency programs).

Reliability Services (RS) - The Independent System Operator is required to ensure adequate generation to maintain electric system reliability. This means having enough generating facilities available to meet the demand for electricity at all times. The costs associated with this are passed on to SDG&E customers.

State Regulatory Fee - Charged to all utility users to pay for the California Public Utilities Commission (CPUC) operations.

State Surcharge Tax - Collected by the State of California for the conservation and development of energy resources in the state.

Total Rate Adjustment Component (TRAC) - This legislated charge is a conservation incentive. Customers with usage of less than 130% of baseline receive a subsidy credit. Customers with usage over 130% of baseline make up the difference and cover the cost of the subsidy.

Transmission - This charge pays for the delivery of high-voltage electricity from power plants to distribution points near your home or business. It includes the cost of high-voltage power lines and towers, as well as monitoring and control equipment.

SDG&E Policies and Notices

Electronic Check Processing - When you pay your bill by check, you authorize us to electronically process your payment. If your check is processed electronically, your checking account may be debited on the same day we receive the check. Your check will not be returned by your bank, however, the transaction will appear on your bank statement. If you do not wish to participate in this program, please have your account number ready and call 1-866-534-5152.

Rates & Rules - SDG&E's rate schedules and rules, on file and approved by the CPUC, are available on the Internet at www.sdge.com. Copies of applicable tariffs may also be obtained by calling 1-800-411-SDGE (7343) or visiting any company bill payment office.

Pay Before Date / Disconnection Policy - Your SDG&E bill is due and payable upon presentation and is past due if not paid within 15 days of the date mailed. If your payment has not been received by the "Due Date" shown on your bill, your SDG&E service is subject to disconnection, after proper notice has been provided. If your service is disconnected for non-payment, there may be additional service charges and you will be required to pay all past due SDG&E amounts before service is restored. Your SDG&E service could also be disconnected if the information provided on your application for service is false, incomplete or inaccurate. SDG&E will disconnect your services only for non-payment of those charges owed SDG&E.

If you are unable to pay your SDG&E bill in full due to a temporary financial hardship or due to a serious illness in the household, you need to call SDG&E before the expiration of

this notice. Employees, including multilingual staff, are available to assist with payment arrangements.

If SDG&E fails to offer you payment arrangements, you may write to the Consumer Affairs Branch of the California Public Utilities Commission (CPUC), State Office Building, 505 Van Ness Avenue, Room 2003, San Francisco, CA 94102, phone: 800-649-7570, email: consumer-affairs@cpuc.ca.gov, prior to disconnection of your SDG&E service. The Consumer Affairs Branch will review the complaint and issue its proposed resolution to you and SDG&E. If you are not satisfied, you may appeal the proposed resolution by filing a formal complaint. A more detailed explanation of disconnection policies, including your rights as an SDG&E customer, may be obtained by calling 1-800-411-SDGE (7343), or e-mail: info@sdge.com.

Disputed Bills / Service Complaints - If you believe there is an error on your bill or have a question about your service, please call SDG&E customer support at 1-800-411-SDGE (7343). If you are not satisfied with SDG&E's response, submit a complaint to the California Public Utilities Commission (CPUC) at www.cpuc.ca.gov/complaints/. Billing and service complaints are handled by the CPUC's Consumer Affairs Branch (CAB), 505 Van Ness Ave, Room 2003, San Francisco, CA 94102, phone: 1-800-649-7570.

If you have limitations hearing or speaking, dial 711 to reach the California Relay Service, which is for those needing assistance relaying telephone conversations. Dial one of the numbers below to be routed to a California Relay Service provider in your preferred mode of communication.

California Relay Service Phone Numbers:

Table with 2 columns: Type of Call, Toll-Free Number. Rows include TTY/VCO/HCO to Voice, Voice to TTY/VCO/HCO, and Speech to Speech.

To avoid having service turned off while waiting for the outcome of a complaint to the CPUC specifically regarding the accuracy of your bill, please contact CAB for assistance. If your case meets the eligibility criteria, CAB will provide you instructions on how to mail a check or money order to be impounded pending resolution of your case. You must continue to pay your current charges while your complaint is under review to keep your service turned on.

Re-Establishment of Credit / Deposit - If your SDG&E bill becomes past due and a written notice for disconnection is mailed, you may be required to re-establish your credit by paying a deposit.

Large Font Bill - You can sign-up to receive a large font bill by calling SDG&E at 1-800-411-SDGE (7343).

