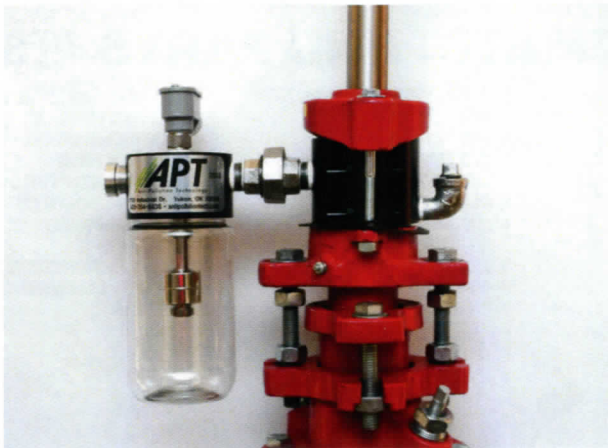


SERIES #5000



The Series #5000 are Leak Detecting units designed to capture fluids leaking past the packing members of the stuffing box. The leak detector has a float switch that will shut down pumping unit when reservoir is full.

**Stuffing Box
Containment**



**Visual
Inspection**



**Safety
Shut -off Switch**



Features

- Split Housing Adapter for Easy Installation. No Rig Required.
- Adapter Provides an Increase in the Amount of Lubricating Oil for Seals.
- Fits Polish Rod/Liner Sizes 1"-1 3/4"
- Low Profile requiring 4 1/2" clearance
- Corrosion Resistance Parts
 - 316 Stainless Steel Electrical Switch
 - Anodized 6061 Aluminum Housings

Reservoir Options



Glass



Plastic



Steel

Tech Specs

Switch:

Opened or Closed Circuit

Gas or Electric Applications

Built- in Resister for High Ignition Systems

Switch Rating:

3 amp @ 28 VDC and 100 watts @ 110 VAC

SERIES #5000

STUFFING BOX LEAK DETECTOR SCHEMATIC AND PARTS LIST

Wiring Schematic

SPDT

Red (NC) →

Black (C) →

White (NO) →

Blue (Resistored NO)

Switch Features

- Hermetically sealed contacts
- Switch materials are lead free and RoHS compliant
- Solid Tungsten bar and plate
- UL recognized component

Ambient Conditions

Ambient temperature (storage) -40 to +125 Celsius

Ambient temperature (operation) -40 to +200 Celsius

Electrical Data

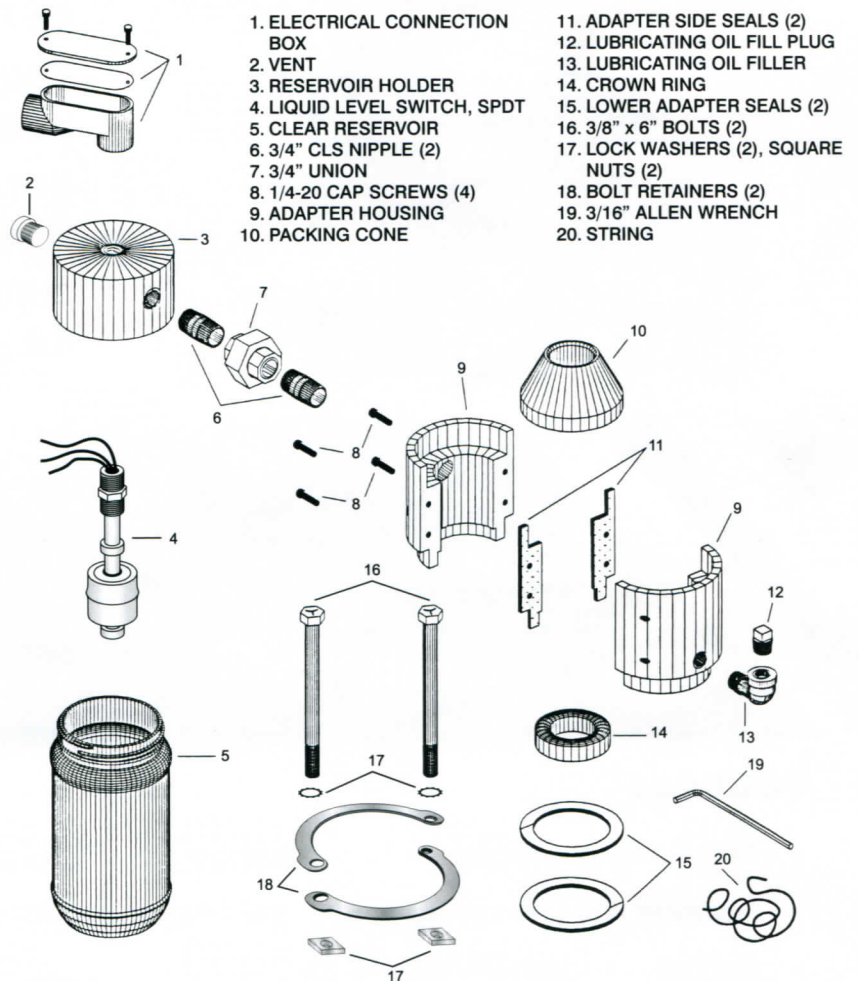
Watts Max. 100

Voltage Switching VDC max. 120

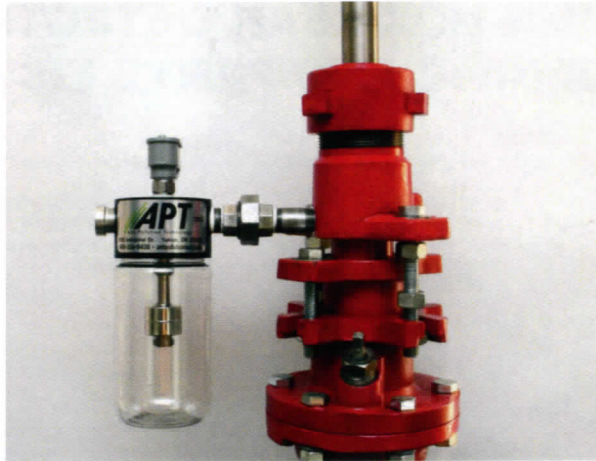
Voltage Breakdown VDC min. 150

Current Switching Amp max. 3

Current Carry Amp max. 3.6



SERIES #6000



The Series #6000 are Leak Detecting units designed to capture fluids leaking past the packing members of the stuffing box. The leak detector has a float switch that will shut down pumping unit when reservoir is full.

**Stuffing Box
Containment**



**Visual
Inspection**



**Safety
Shut-off Switch**



Features

- Rigid Setup that **replaces** Upper Gland and Top Cap of Stuffing Box
- Grease Zerk for lubricating "V" style packing.
- Fits Polish Rod/Liner Sizes 1"-1 3/4"
- Fits any "Classic" style stuffing box
- Single ACME Threaded Cap
 - Evenly Compressing Packing
 - Stack out without damaging packing

Reservoir Options



Glass



Plastic



Steel

Tech Specs

Pressure Rating: 1500 PSI

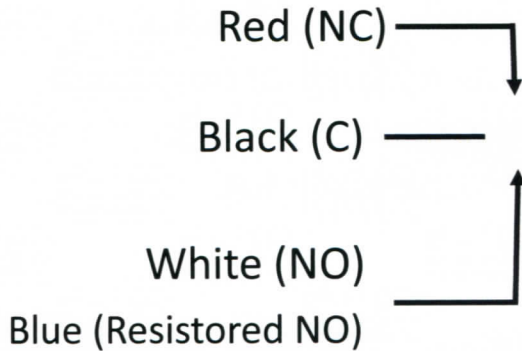
Switch: Opened or Closed Circuit
Gas or Electric Applications
Built-in Resister for High Ignition Systems

Switch Rating: 3 amp @ 28 VDC and 100 watts @ 110 VAC

SERIES #6000

Wiring Schematic

SPDT



Switch Features

- Hermetically sealed contacts
- Switch materials are lead free and RoHS compliant
- Solid Tungsten bar and plate
- UL recognized component

Ambient Conditions

Ambient temperature (storage) -40 to +125 Celsius

Ambient temperature (operation) -40 to +200 Celsius

Electrical Data

Watts Max. 100

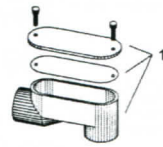
Voltage Switching VDC max. 120

Voltage Breakdown VDC min. 150

Current Switching Amp max. 3

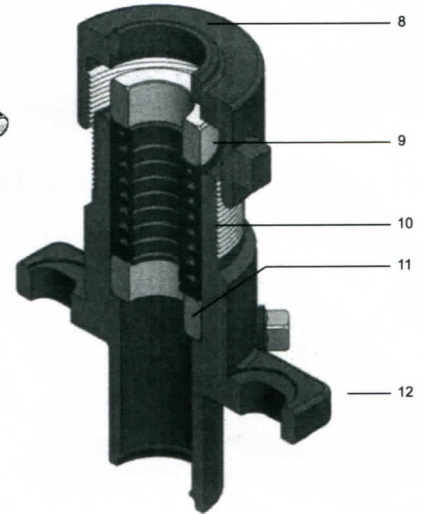
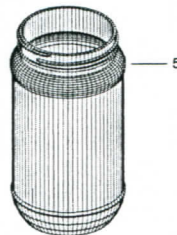
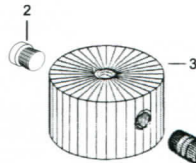
Current Carry Amp max. 3.6

STUFFING BOX LEAK DETECTOR SCHEMATIC AND PARTS LIST



1. ELECTRICAL CONNECTION BOX
2. VENT
3. RESERVOIR HOLDER
4. LIQUID LEVEL SWITCH, SPDT
5. CLEAR RESERVOIR
6. 3/4" CLS NIPPLE (2)

7. 3/4" UNION
8. HDPlug CAP
9. HDPlug UPPER FOLLOWER
10. CHEVRON STYLE PACKING
11. HDPlug LOWER FOLLOWER
12. HDPlug BODY



SERIES #9100



The Series #9100 are Leak Detecting units designed to capture fluids leaking past the packing members of the stuffing box. The leak detector has an adjustable weight activated switch that will shut down pumping unit when reservoir is at desired level.

Stuffing Box Containment



Safety Shut -off Switch



Split Housing

- Easy installation. No rig required
- Adapter provides an increase in the amount of lubricating oil for seals.
- Fits polish rod/liner sizes 1"-1 3/4"
- Fits any "Classic" style stuffing box
- Strong enough to hold the weight of rod string

Specs

- 1 Gallon stainless steel reservoir
- Weight adjustable
- Stainless steel components
- Powder coated housings
- Made in the USA

HD PLUG

- 1500 PSI
- Rigid setup that **replaces** upper gland and top cap of stuffing box
- Grease zerk for lubricating "V" style packing.
- Fits polish rod/liner sizes 1"-1 3/4"
- Single ACME threaded cap
Evenly compressing packing

- Two electrical switches available
 - Standard
 - Explosion proof

(See reversed side for details)

SERIES #9100

Standard Switch: Honeywell BZV6-RNX1

- Micro Switch w/ Reset on Bottom
- NEMA 1, 3, 4 /IP66
- UL Recognized, file #E12252
- CSA Certified, file #LR41372
- Ampere Rating: 15 A Ind./0.5 A Res./0.25 A Res.
- Voltage: 125 Vac, 250 Vac, 480 Vac/125 Vdc/250 Vdc

Explosion Proof: TOPWORX Go Switch 11-12221-A25708

- Potted-in 18 AWF cooper wire 36" long
- UL, CSA/FM Certified CL I, DIV. 1, GRPS A,B,C,D; CL II, DIV . 1, GRPS E,F,G; CL III
- Electrical Rating: 10A @240VAC, 3A @24VDC
- Case Material 304 SST
- Temperature Range: -40F to 221F

SERIES #1000 & #3010



The Series #1001 & #3010 APT Tanks are ASME Coded tanks that are designed to prevent ground pollution from production equipment, giving the operator a place to go with waste fluids.

Applications:

- Compressor Skids
- Dehydrators
- Centrifugal/Plunger Pumps
- Flare Lines
- Drains from production equipment
- Leaks from Stuffing Boxes

Design

The #1001 and #3010 are gravity fed tanks that will capture fluids through the top inlet check valve. At approximately 90% capacity the pneumatic controller will activate the stainless steel 3-way valve that will pressurize the tank. Fluids will dump through the lower discharge check valve to operator's stock tank. Once the tank is empty, the remaining pressure will vent off and the tank will resume another cycle.

Available Tanks Options:

Series #1001 Hard mounted in fiberglass box (pictured on back)

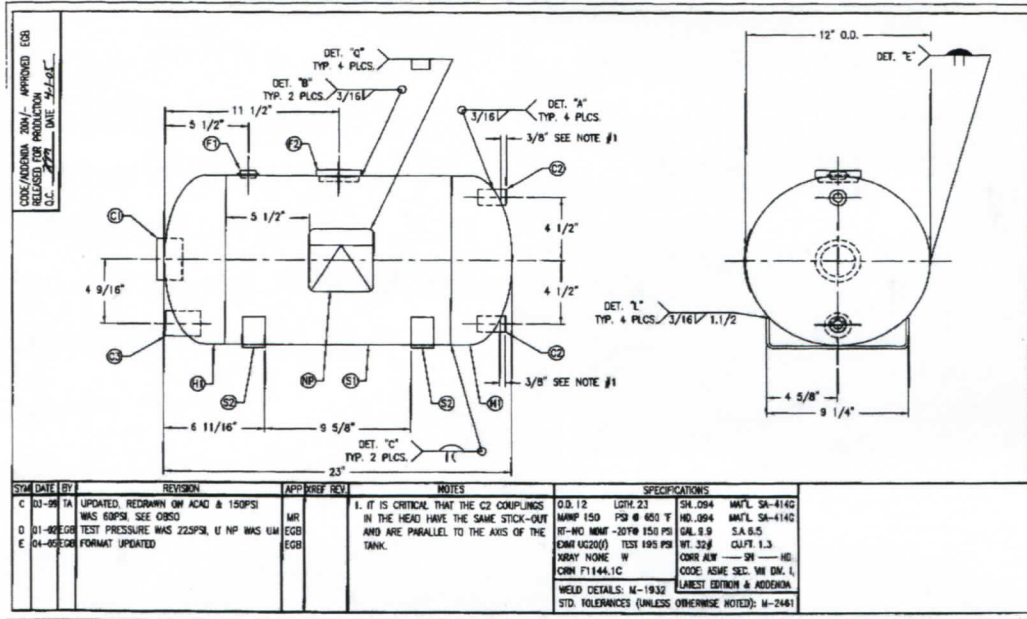
Steel and Stainless Steel Fittings

Relief valves set 150 PSI

Inlet & discharge checks on bottom of tank.

- **APT will custom build to meet customers preferences.**

SERIES #1000 & #3010



SERIES

#1001

#3010

CAPACITY

10 GALLONS

30 GALLONS

CODED/RELIEF VALVE

150 PSI / 100 PSI

150 PSI / 100 PSI

INLET CHECK VALVE

1" (STANDARD) 2" (AVAILABLE)

2" (STANDARD) 1" (AVAILABLE)

DISCHARGE CHECK VALVE

1"

1" (STANDARD) 2" (AVAILABLE)

SUPPLY GAS INLET

1/4"

1/2"

LENGTH X WIDTH X HEIGHT (in)

34" X 12" X 17"

48" X 16" X 22"

FLOW RATE

330 GPH

1465 GPH

TEMPERATURE RATING

650 F

400 F

STAINLESS STEEL FLOAT

2 X 6

2 X 12



**10 GALLON TANK
FIBERGLASS ENCLOSURE
WITH LID**