



**Malton Construction
Capability Statement
2026**

TABLE OF **CONTENT**

- Company Overview
- Delivery Capability
- Key Personnel
- Relevant Experience
- Plant & Equipment
- Safety and Compliance
- Contact



COMPANY

OVERVIEW

Malton Construction is a Perth based civil and water infrastructure contractor delivering practical, hands on works across metropolitan Western Australia. The business is director owned and operated, combining strong on-site delivery capability with disciplined planning, compliance, and coordination.

Malton Construction focuses on civil works that require accuracy, care around existing assets, and a high standard of reinstatement. The team is experienced in working within live environments, managing interfaces with authorities and other contractors, and delivering works that meet specification without rework.

DELIVERY

CAPABILITY

Malton Construction undertakes civil and water-related works involving excavation, formation, reinstatement, and asset interaction. Typical scopes include:

- Excavation, profiling, and compaction to specified levels
- Preparation of formations for future surfacing works
- Removal, installation, and reinstatement of access structures within live environments
- Civil finishing works, including trimming, battering, and surface reinstatement
- Earthworks associated with surface water management and erosion control
- Coordination of works around existing services, pavements, and public interfaces
- All works are delivered with appropriate planning, asset protection, and safety controls in place.



KEY PERSONNEL

Matt Ferguson

Director - Project Management & Commercial

Matt brings over 20 years' experience in water and HDPE infrastructure, with the last 5 years in senior project and delivery management roles. His background spans planning, coordination, cost control, and stakeholder management across complex infrastructure environments.

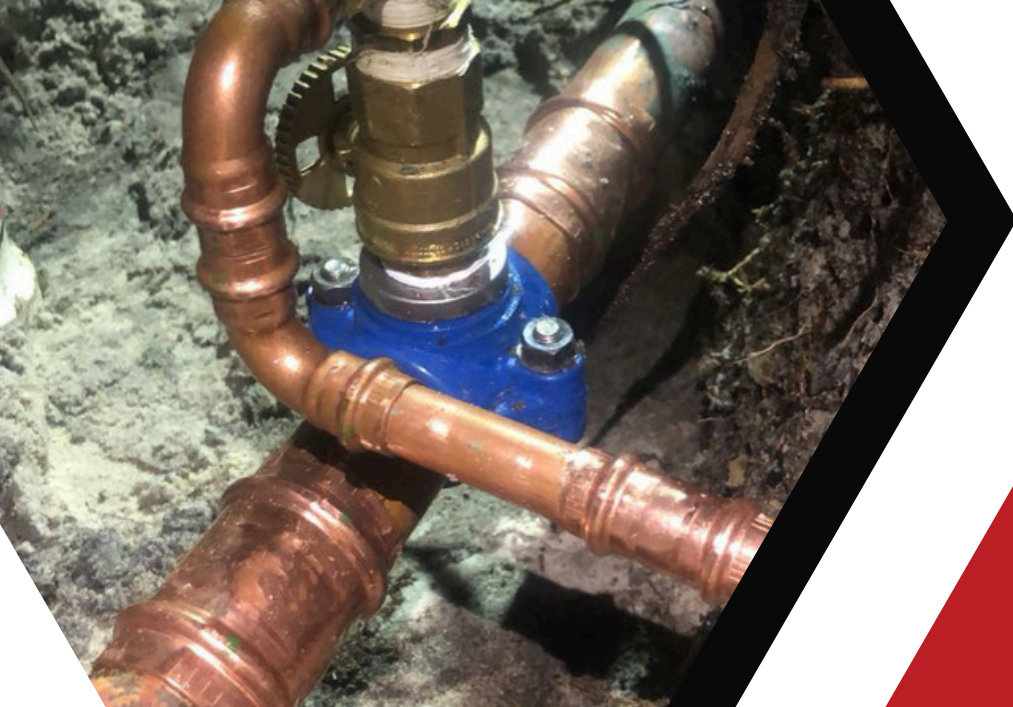
Matt has led multidisciplinary crews and subcontractors, managed live-asset works, and overseen delivery where accuracy, sequencing, and reinstatement quality were critical. His approach is practical and outcome-focused, ensuring works are executed efficiently while meeting compliance and quality expectations.

Dalton Duplock

Director - Operations & Delivery

Dalton is a highly experienced civil operator and leading hand with more than 15 years' hands-on delivery experience across water, drainage, and civil works. His background includes extensive machine operation, poly welding, civil finishing, and leading crews through technically sensitive scopes.

Dalton has a strong history of working around live services, undertaking reinstatement works, and delivering finishing works to a high standard. He brings a strong safety mindset, practical problem-solving ability, and a deep understanding of how civil works perform long-term.



RELEVANT **EXPERIENCE**

Across their careers, the Malton Construction directors have delivered works involving:

- Excavation and formation works requiring tight level control
- Interaction with existing water and civil assets in live environments
- Removal and reinstatement of access structures and surrounding pavements
- Coordination of works where final surfacing or finishes are completed by others
- Earthworks to manage surface water flows and mitigate erosion risks
- Civil finishing works requiring accuracy, presentation, and durability

This experience underpins Malton Construction's ability to deliver metropolitan civil works efficiently and to specification.

PLANT & EQUIPMENT

MaltonConstruction maintains plant and equipment suited to small and medium civil works, including:

- Isuzu N-Series tipper truck & Plant Trailer
- 2.6-tonne mini excavator
- Quick cut road saw , chainsaws , lifting equipment , all small hand tools

All plant is operated and maintained by Malton Construction personnel.

SAFETY & COMPLIANCE

Malton Construction operates with a strong focus on safety, asset protection, and compliance. Works are planned and executed using appropriate SWMS, JHAs, and task-specific controls. The team is experienced in:

- Working around live services
- Asset identification and protection
- Controlled excavation and reinstatement
- Coordinating with authorities and third parties

Safety and quality are treated as fundamental delivery requirements, not add-ons.





GET IN TOUCH

CONTACT

Malton Construction Pty Ltd

Perth, Western Australia



info@maltonconstruction.com.au



Matt - 0434 872 752

Dalton - 0411 640 776