

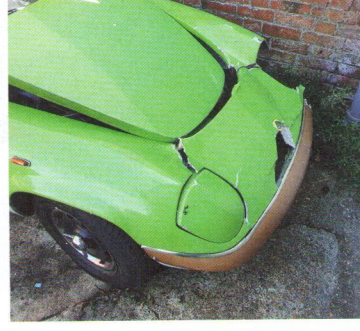
THE REBUILD



Severe damage where the car...



...was struck while stationary.



Car was pushed into the barrier...



...damaging the front end.



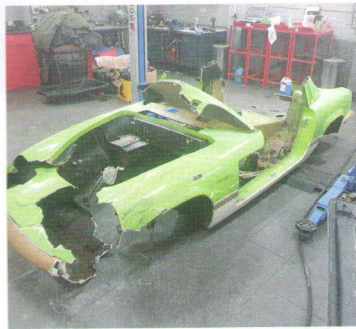
Interior part-way through strip-down.



Up on the ramp where the full extent of the damage could be assessed.



Stripped back to the bare chassis.



Not much left of the old body.



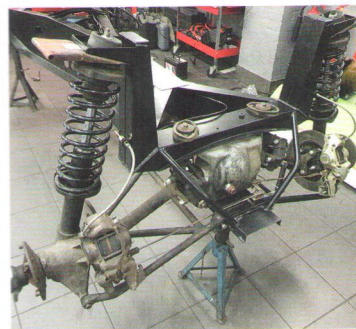
Original doors lined up in new 'shell.



Cutting myriad holes in body a big job.



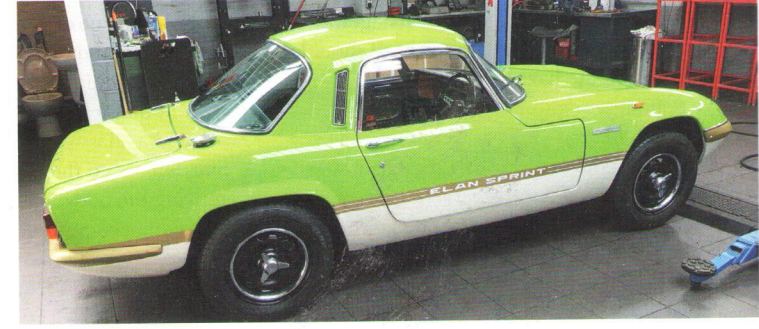
New body in original Pistachio Green.



Chassis accepting suspension.



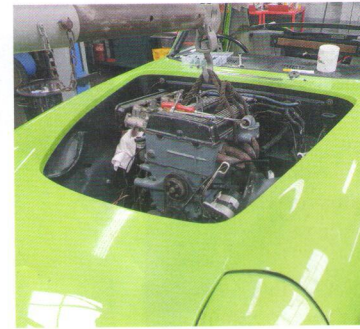
Dash being fitted in new bodyshell.



Looking as good as new again! High front ride height betrays missing engine.



Engine bay being plumbed...



...ahead of engine installation.



Elan Sprint graphics being fitted.



Almost ready for the road again.

Rebuild pics: Max Hurst