

# QUADRA PUMPS

powered by innovation



## QUADRA DIESEL PUMP SERIES

INDUSTRY EXCELLENCE, WHERE PERFORMANCE AND DURABILITY MEET

# PUMP TO PERFECTION



[ QPD-108HH17 ]

[ QPD-64HH22 ]

[ QPD-86HH22 ]

[ QPD-66MH12 ]

**Jeff Belanger**  
+1(604) 782-4774  
Jeff@quadrapumps.com

57-3347 262 Street,  
**Aldergrove, BC**  
V4W 3V9, Canada

12255 104 Avenue,  
**Grande Prairie, AB**  
T8V 8A7, Canada

# QUADRA PUMPS

powered by innovation



[ QPD-66MH12-SA ]

## DESCRIPTION

THE LINE OF CENTRIFUGAL PUMPS WE CARRY ARE DEVELOPED TO EFFECTIVELY MEET THE PERFORMANCE REQUIREMENTS AND DURABILITY TO POWER THE NEEDS OF A WIDE RANGE OF INDUSTRY APPLICATIONS WORLDWIDE. THIS IS AN ENCLOSED PACKAGE WITH SOUND ATTENUATED, ALSO KNOWN AS A “QUIET PACK”.

QUADRA QPD-66MH12-SA DIESEL POWERED PUMP SERIES HAS A STEEL EXTERIOR CONSTRUCTION, HEAVY DUTY HIGH TENSILE BEARING HOUSING WITH FULL STAINLESS STEEL INTERNAL WORKING COMPONENTS. THIS HIGH QUALITY DESIGN PROVIDES PREMIUM EFFICIENCY FOR HIGH HEAD/FLOW APPLICATIONS, FEATURING A STATE OF THE ART AUTOMATIC VAC ASSIST CHAMBER AND AN ENDURA SILICONE CARBIDE RUN DRY SEAL SYSTEM.

## APPLICATIONS



Industrial



Oil & Gas



Waste Water



Environmental



Construction



Mining

## FEATURES

Complete Containment | Fuel Heating | PAS Systems | Telemetry | Engineered Lifting Points | Welded D Links

LED Lighting | Brake Equalizing | Levelling System | Safety Zone Controls | Glycol Heater | Viscous Fan Coupling

Components equipped for durable conditions | Optimizes efficiency and maximum life span of pump

## PUMP PACKAGE DATA

### 74 HP Industrial Power Unit

4 Cylinder Turbo Charged | Liquid Cooled | 12 Volt | LCD Control Panel | 1 Year Warranty

### Highway Rated Trailer

6k Single Axle | 17.5" Trailer Tires | 400 L Fuel Cell | Lifting Bale | Choice of Fittings | 8K Stabilizers | Brakes + Lights

# QUADRA PUMPS

powered by innovation

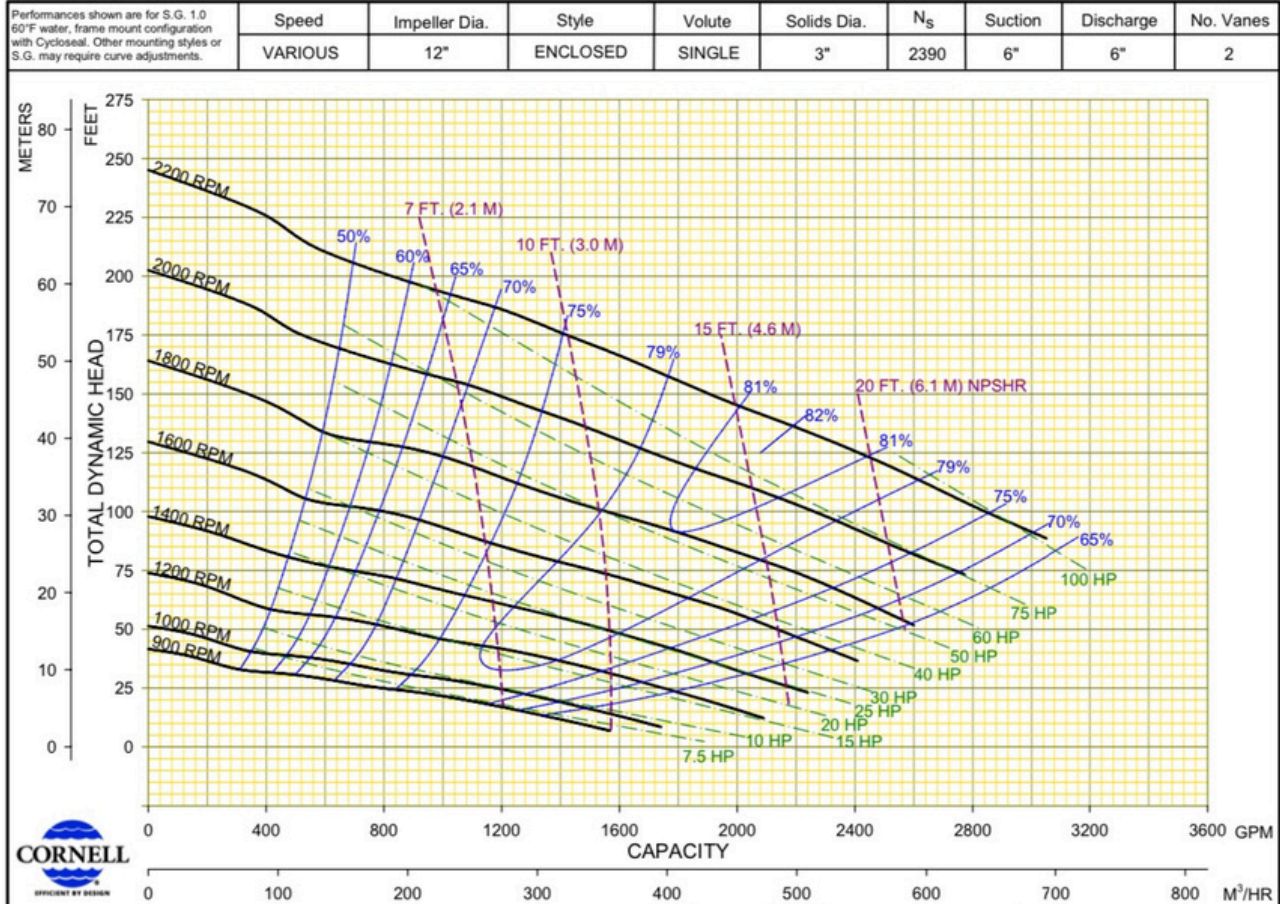


CORNELL PUMP END

## SPECIFICATIONS

6612T

Max. Flow	2680 GPM
Discharge Size	6"
Suction Size	6"
Solids Handling	3"
Max. Speed	2200 RPM
Shut Off Head	245'



# QUADRA PUMPS

powered by innovation

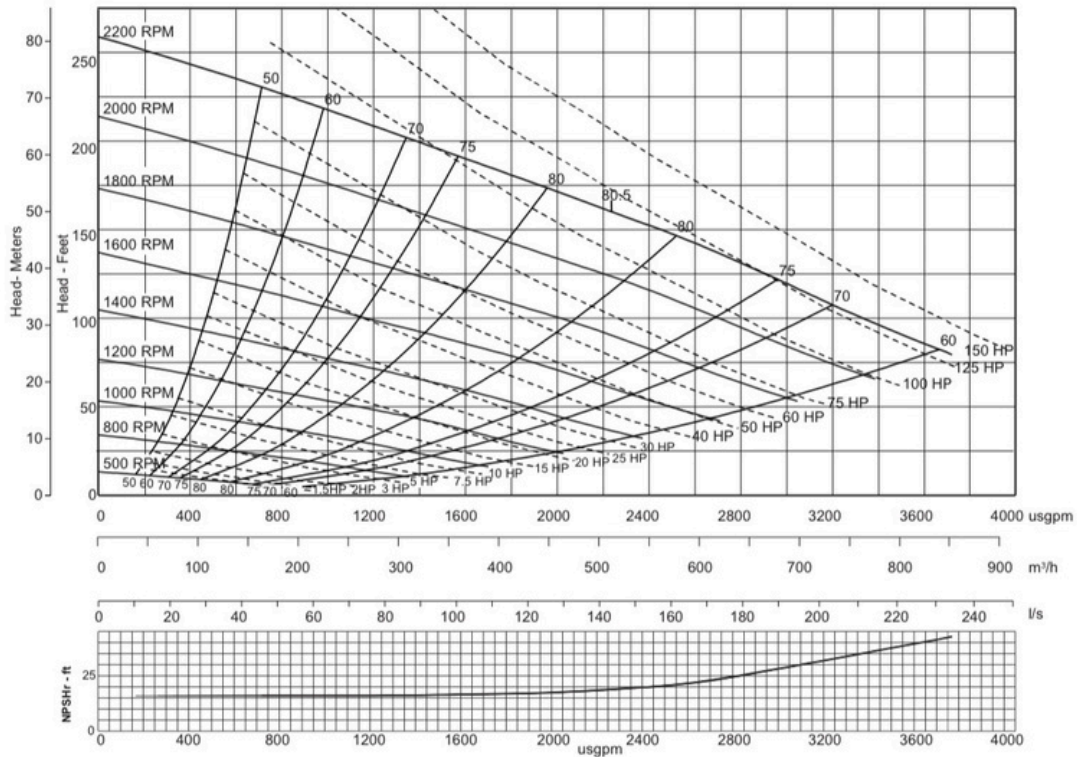


## PIONEER PUMP END

### SPECIFICATIONS

#### PP66S12

Max. Flow	3400 GPM
Discharge Size	6"
Suction Size	6"
Solids Handling	3"
Max. Speed	2200 RPM
Shut Off Head	200'



Model	PP66S12	
Size	6" x 6"	150 mm x 150 mm
Impeller Diameter	12.0"	305 mm
Solids Handling Size	3.0"	76 mm

DWG No. A5856HQ  
 Revision 003  
 Drawn By  
 Date 31 Mar 2014