

QUADRA PUMPS

powered by innovation



QUADRA DIESEL PUMP SERIES

INDUSTRY EXCELLENCE, WHERE PERFORMANCE AND DURABILITY MEET

PUMP TO PERFECTION



[QPD-108HH17]

[QPD-64HH22]

[QPD-86HH22]

[QPD-66MH12]

Jeff Belanger
+1(604) 782-4774
Jeff@quadrapumps.com

57-3347 262 Street,
Aldergrove, BC
V4W 3V9, Canada

12255 104 Avenue,
Grande Prairie, AB
T8V 8A7, Canada

QUADRA PUMPS

powered by innovation



DESCRIPTION

THE LINE OF CENTRIFUGAL PUMPS WE CARRY ARE DEVELOPED TO EFFECTIVELY MEET THE PERFORMANCE REQUIREMENTS AND DURABILITY TO POWER THE NEEDS OF A WIDE RANGE OF INDUSTRY APPLICATIONS WORLDWIDE.

QUADRA QPD-66MH12 DIESEL POWERED PUMP SERIES HAS A STEEL EXTERIOR CONSTRUCTION, HEAVY DUTY HIGH TENSILE BEARING HOUSING WITH FULL STAINLESS STEEL INTERNAL WORKING COMPONENTS. THIS HIGH QUALITY DESIGN PROVIDES PREMIUM EFFICIENCY FOR HIGH HEAD/FLOW APPLICATIONS, FEATURING A STATE OF THE ART AUTOMATIC VAC ASSIST CHAMBER AND AN ENDURA SILICONE CARBIDE RUN DRY SEAL SYSTEM.



[QPD-66MH12]

APPLICATIONS



Industrial



Oil & Gas



Waste Water



Environmental



Construction



Mining

FEATURES

Complete Containment | Fuel Heating | PAS Systems | Telemetry | Engineered Lifting Points | Welded D Links

LED Lighting | Brake Equalizing | Levelling System | Safety Zone Controls | Glycol Heater | Viscous Fan Coupling

Components equipped for durable conditions | Optimizes efficiency and maximum life span of pump

PUMP PACKAGE DATA

74 HP Industrial Power Unit

4 Cylinder Turbo Charged | Liquid Cooled | 12 Volt | LCD Control Panel | 1 Year Warranty

Highway Rated Trailer

6k Single Axle | 17.5" Trailer Tires | 400 L Fuel Cell | Lifting Bale | Choice of Fittings | 8K Stabilizers | Brakes + Lights

QUADRA PUMPS

powered by innovation

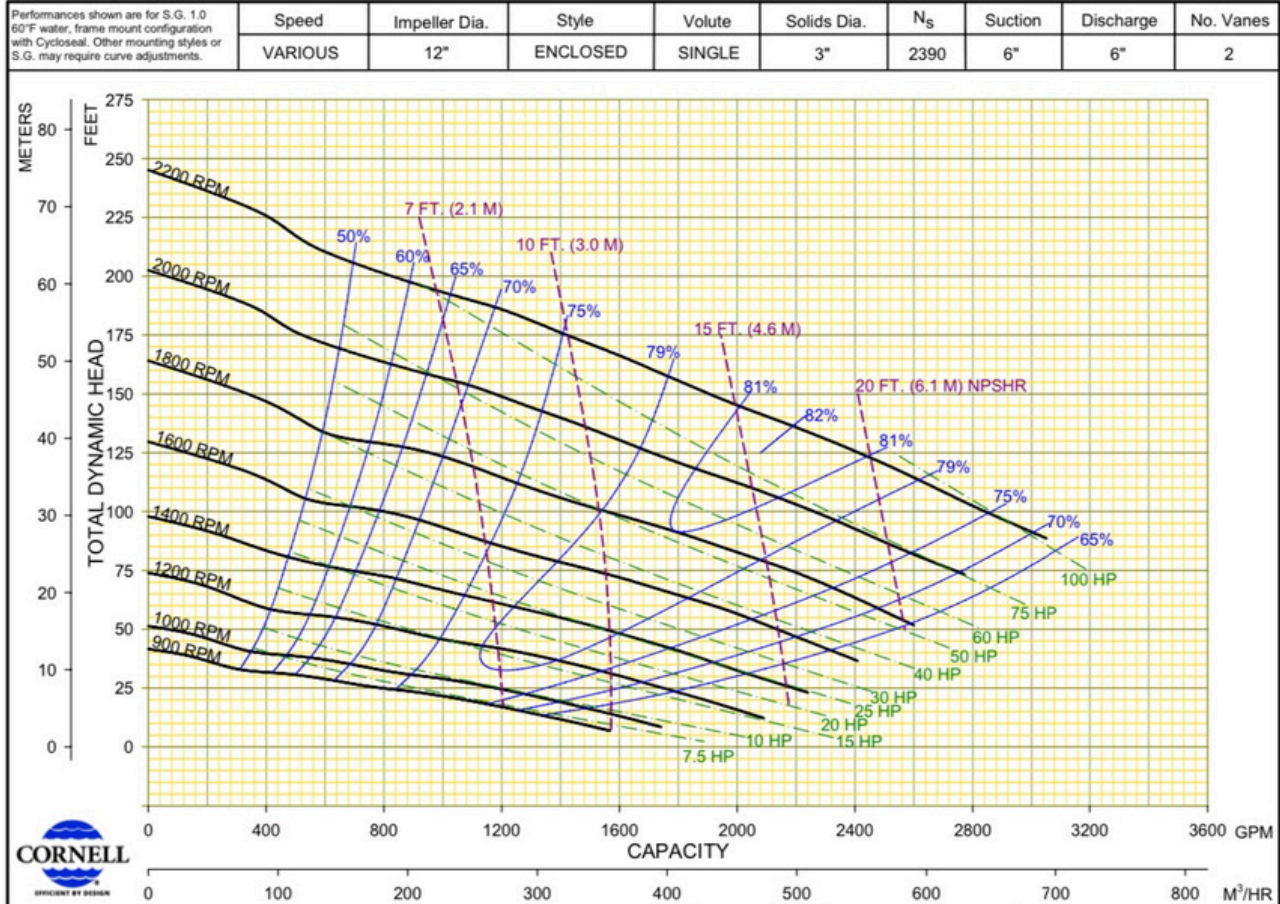


CORNELL PUMP END

SPECIFICATIONS

6612T

Max. Flow	2680 GPM
Discharge Size	6"
Suction Size	6"
Solids Handling	3"
Max. Speed	2200 RPM
Shut Off Head	245'



QUADRA PUMPS

powered by innovation

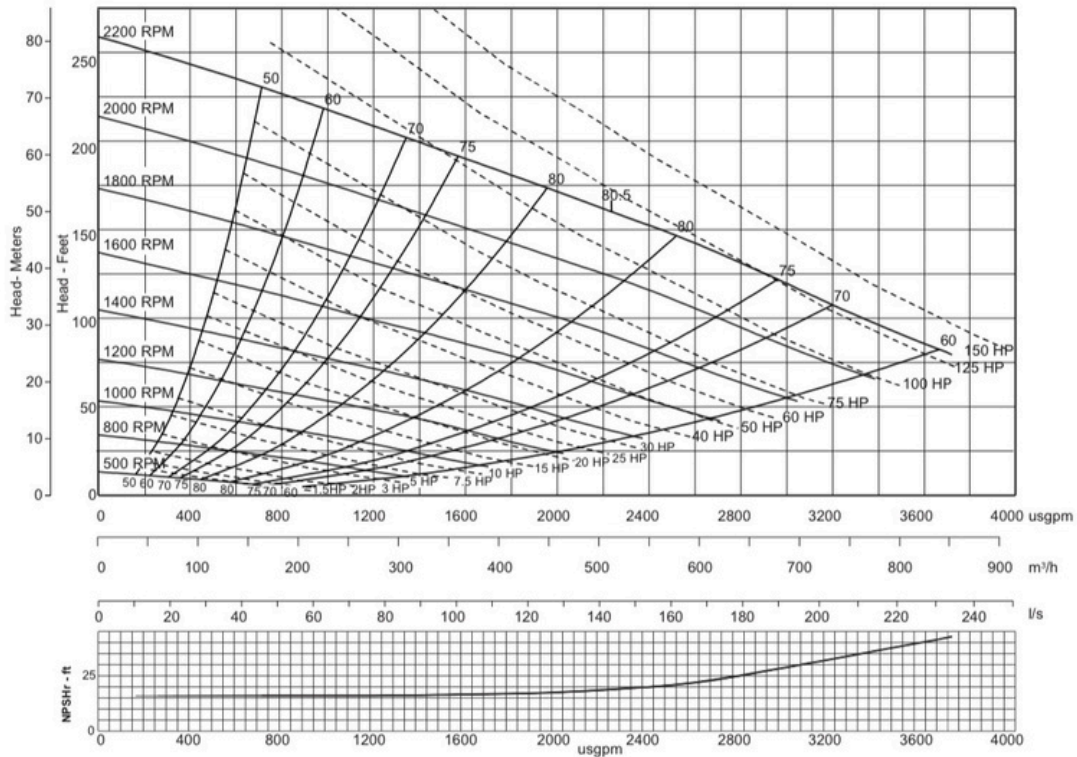


PIONEER PUMP END

SPECIFICATIONS

PP66S12

Max. Flow	3400 GPM
Discharge Size	6"
Suction Size	6"
Solids Handling	3"
Max. Speed	2200 RPM
Shut Off Head	200'



Note: Curves from pumping system not shown.



Model	PP66S12	
Size	6" x 6"	150 mm x 150 mm
Impeller Diameter	12.0"	305 mm
Solids Handling Size	3.0"	76 mm

DWG No. A5856HQ
 Revision 003
 Drawn By
 Date 31 Mar 2014